

LEGEND

Table with 3 columns: SYMBOL, ABBREVIATION, DESCRIPTION. Includes symbols for TP, AD, OBD, F, LRSB, IN, BS, FURNACE GUIDE, FG, WB, FUTURE WALL BLOWER, MBL, WP, TEMPERATURE PROBE, and LIFT LANDING.

- REFERENCE DRAWING NOS.: 1. G.A OF BOILER SECTIONAL PLAN - 0-00-022-74225, 2. LOCATION OF FURNACE OPENINGS & BUCKSTAYS - 0-00-020-74227, 3. T.P DETAILS OF FW, MS, HRH & CRH PIPING - 0-00-020-74228, 6. LAYOUT OF COLD AIR DUCTING (PLAN & ELEVATION) - 0-00-020-74229, 7. LAYOUT OF HOT AIR DUCTING - (PLAN & ELEVATION) - 0-00-020-74230, 9. LAYOUT OF FLUE GAS DUCTING - 0-00-020-74231, 4. LAYOUT OF ID SYSTEM -ELEVATION. - 0-00-020-74232, 5. LAYOUT OF ID SYSTEM - PLAN - 0-00-020-74233, 8. FLOOR PLAN AT EL.4300 & 7000 (MBL-1) - 0-00-021-74244, 10. FLOOR PLANS AT EL. 12000,12900 TO FLOOR PLAN AT EL. 59000 - 1-00-021-70969 TO 1-00-021-70984, 11. BOILER EQUIPMENT DESIGNATION. - 3-00-020-70106

BOILER PARAMETERS

- 01. STEAM FLOW AT SUPER HEATER OUTLET : 865T/HR, 02. STEAM PRESSURE AT SUPERHEATER OUTLET : 155 KG/CM² (G), 03. STEAM TEMPERATURE AT SUPERHEATER OUTLET : 540° C, 04. STEAM TEMPERATURE AT REHEATER OUTLET : 540° C

DESCRIPTION OF THE UNIT

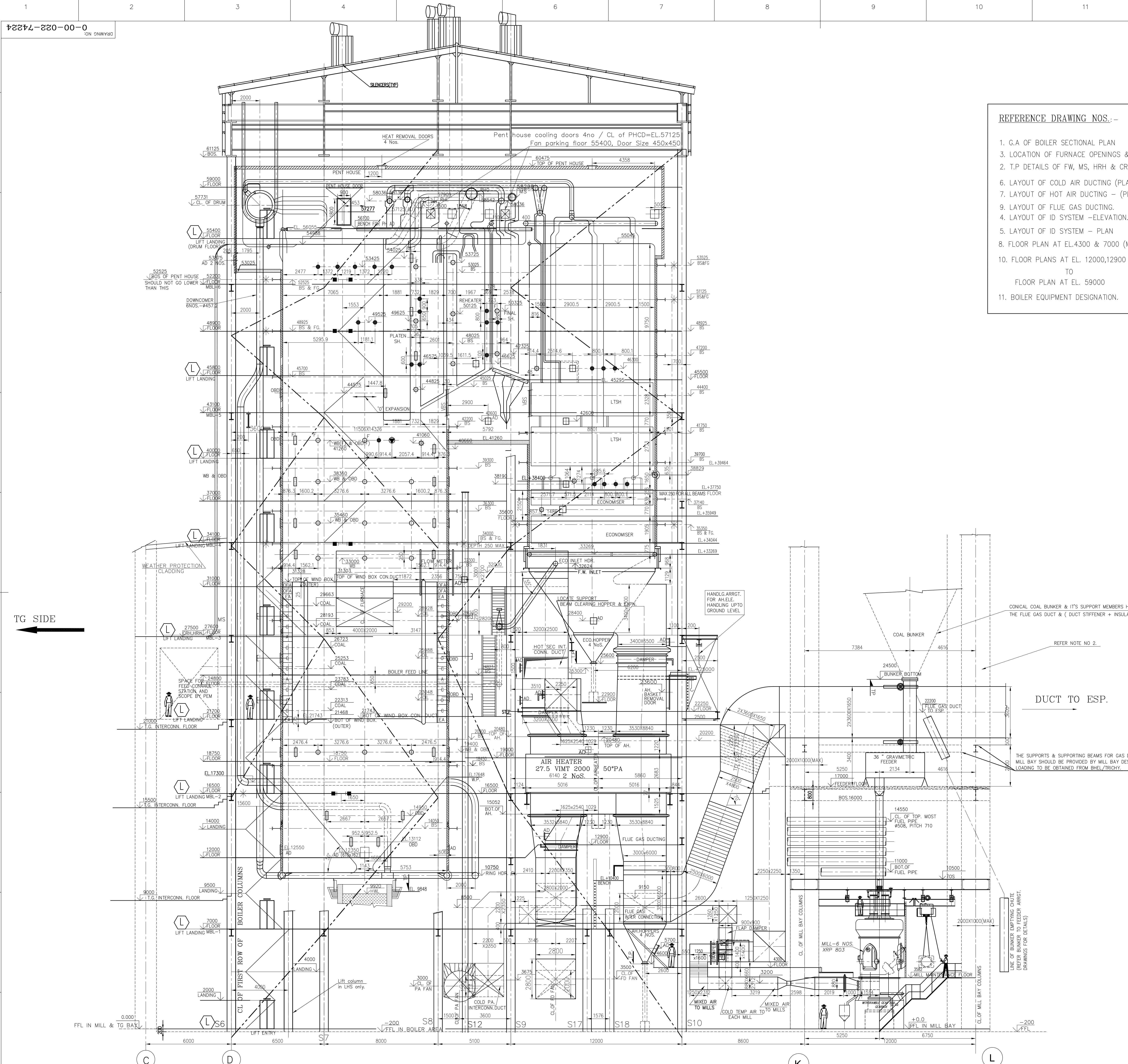
TWO NUMBER OF 250 MW BOILERS, NATURAL CIRCULATION, TWO PASS, SINGLE DRUM, DIRECT, PULVERISED COAL FIRED, BALANCED DRAFT FURNACE, SINGLE REHEAT, RADIANT DRY BOTTOM, SUITABLE FOR OUTDOOR INSTALLATION & SIX NUMBERS OF BOWL MILLS ARRANGED AT THE REAR OF THE BOILER.

NOTES:-

- 1. ALL DUCT SIZES ARE INSIDE DIMENSIONS ONLY UNLESS OTHERWISE SPECIFIED. 2. THE STIFFENER SIZE FOR THE FLUE GAS DUCTING IN MILL BAY AREA IS RESTRICTED TO 150 MAX.

SPECIAL NOTES

ALL ELEVATIONS ARE REFERRED TO POWER HOUSE GROUND FLOOR ELEVATION (+) 0.0 m WHICH CORRESPONDS TO RL(+)-10.5m BOILER FFL (-) 0.200 m WHICH CORRESPONDS TO RL(+)-10.3 m



TG SIDE

GENERAL ARRANGEMENT OF BOILER SECTIONAL SIDE ELEVATION

Revision table with columns: REV., DATE, ALTD., P.V.SRIHARI BABU. Includes revision 1: DRAWING UPDATED TO SHOW COLUMNS DESIGNATIONS AS PER PEM REQUIREMENT.

Project information block including customer details (GUJARAT STATE ELECTRICITY CORPORATION LIMITED), project name (2 X 250 MW SIKKA THERMAL POWER PROJECT EXTENSION UNITS 3&4), consultant (TCE CONSULTING ENGINEERS LIMITED), and drawing title (GENERAL ARRANGEMENT OF BOILER SECTIONAL ELEVATION).