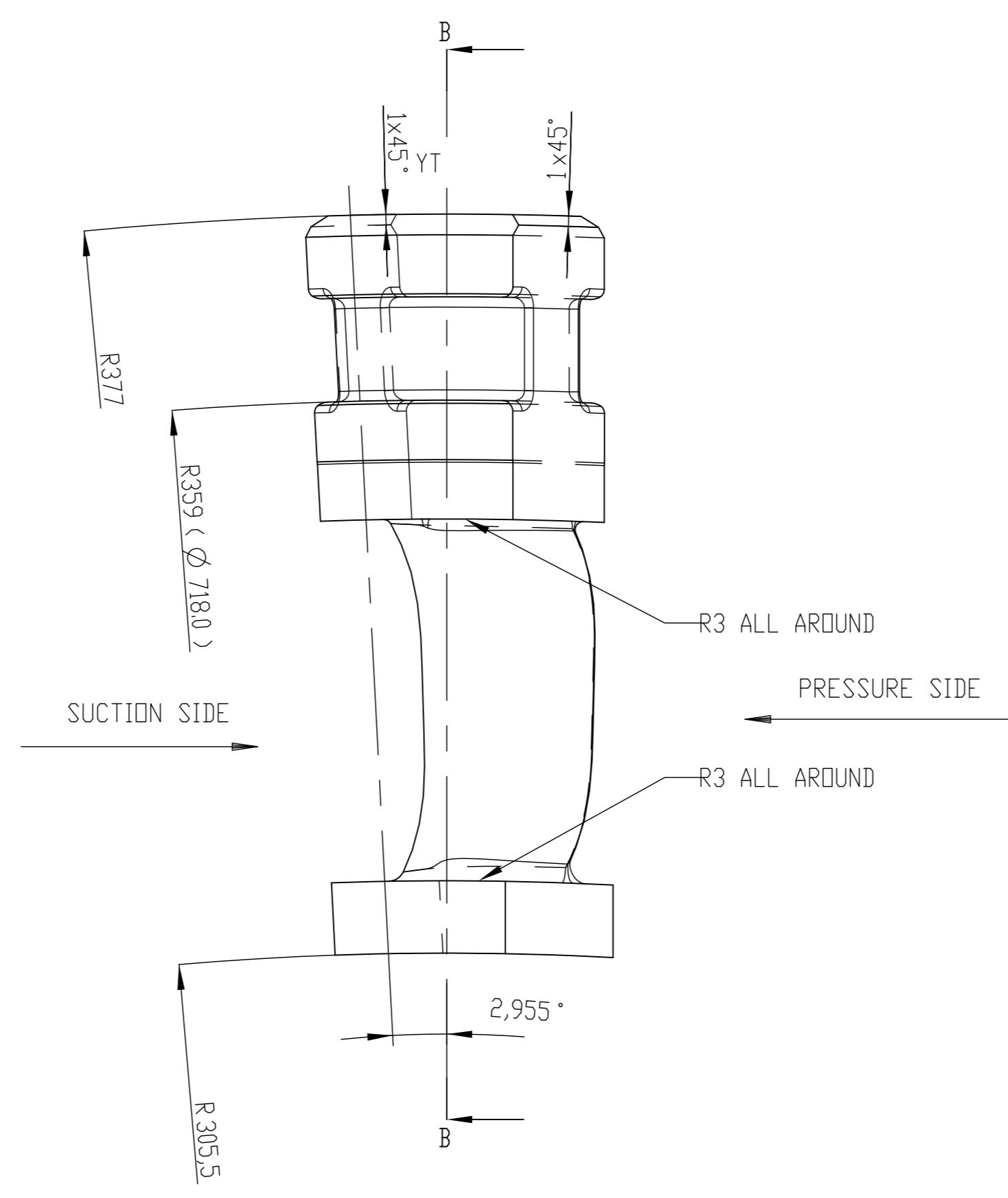
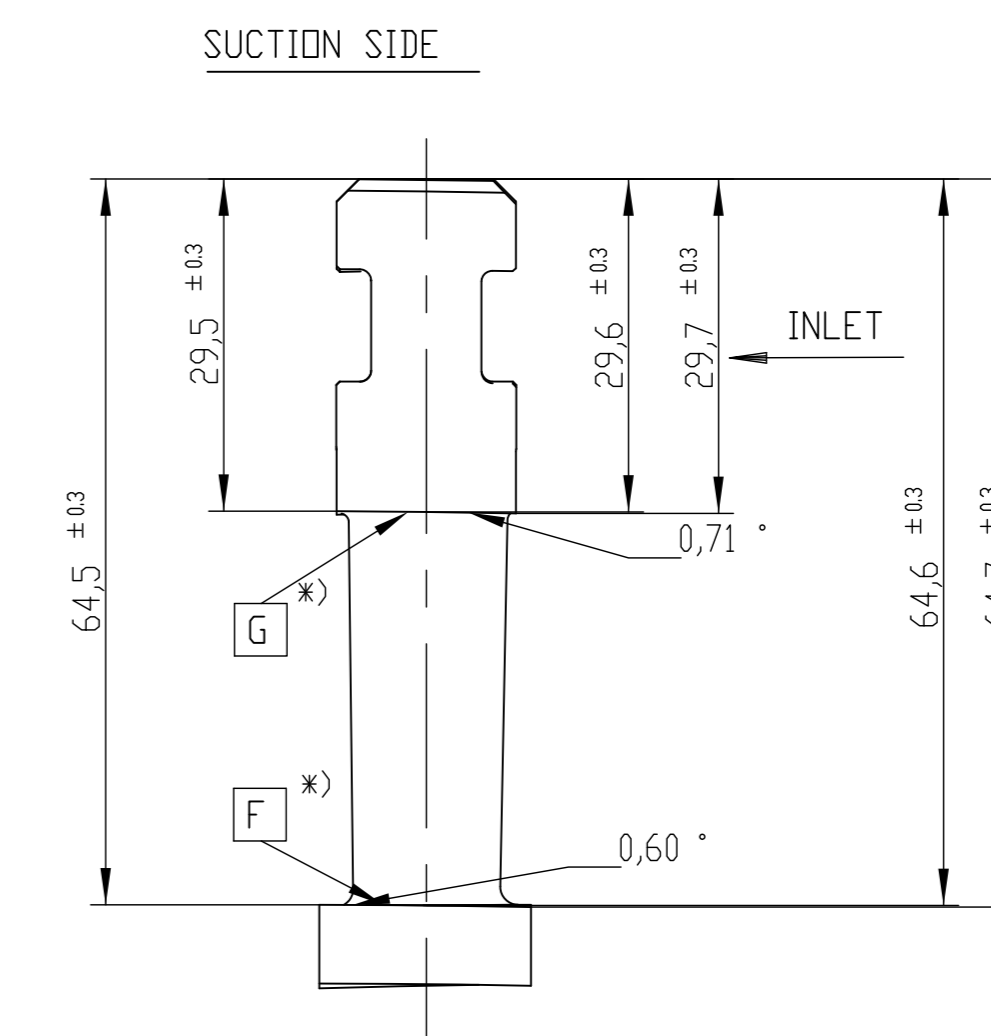
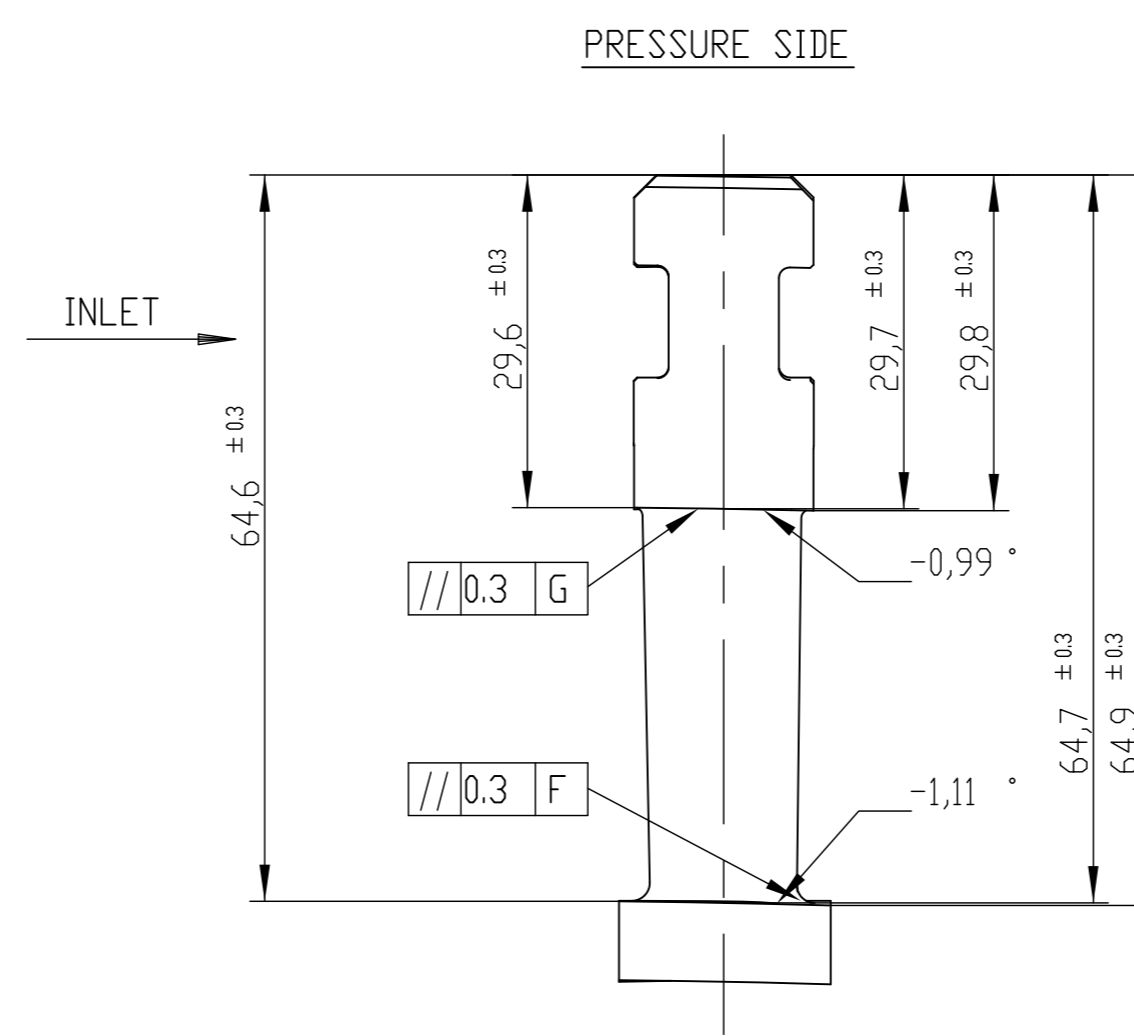


POS. NO: 1

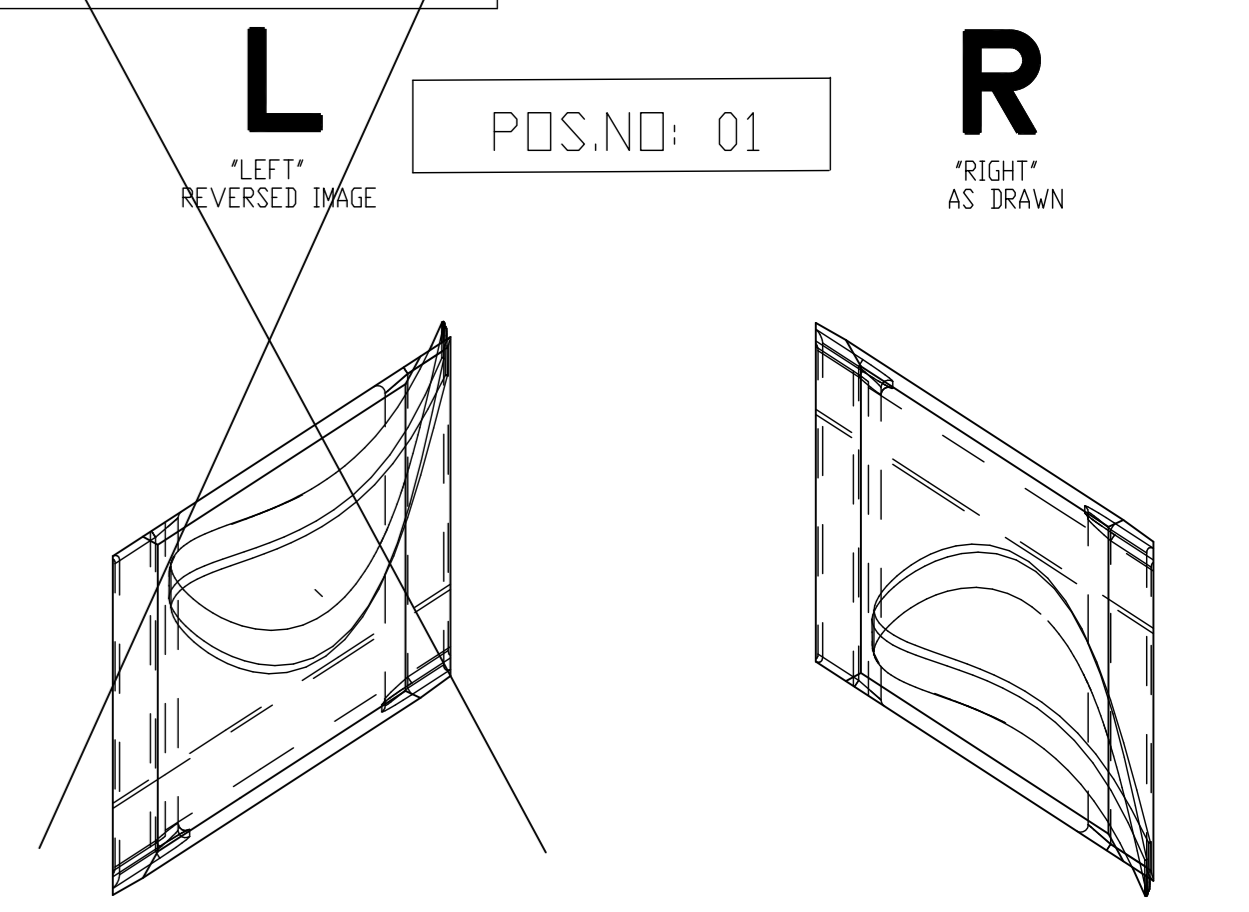
DESIGN: "RIGHT"



SCHEME FOR D AND S DIMENSIONS  
\*) REFERRED TO ADJACENT BLADE

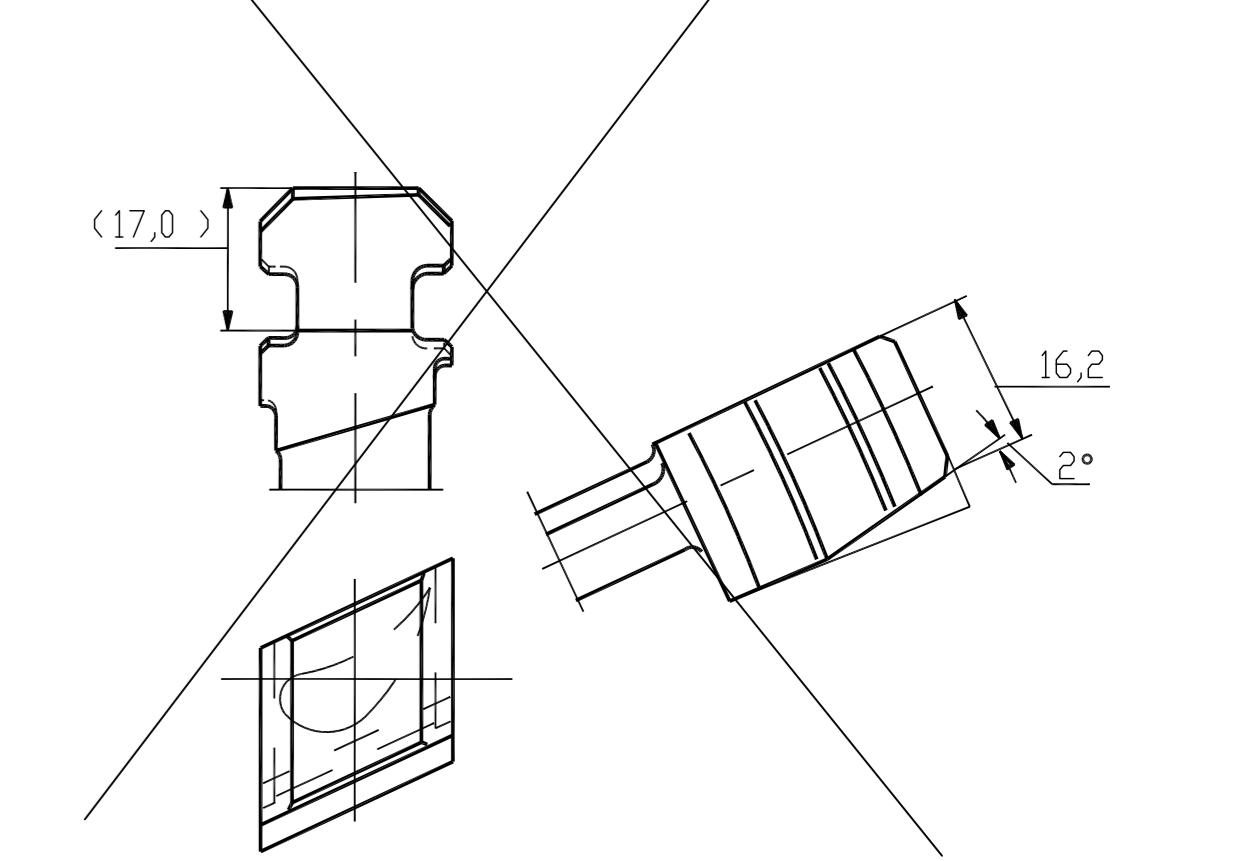


DESIGN: "LEFT"      DESIGN: "RIGHT"



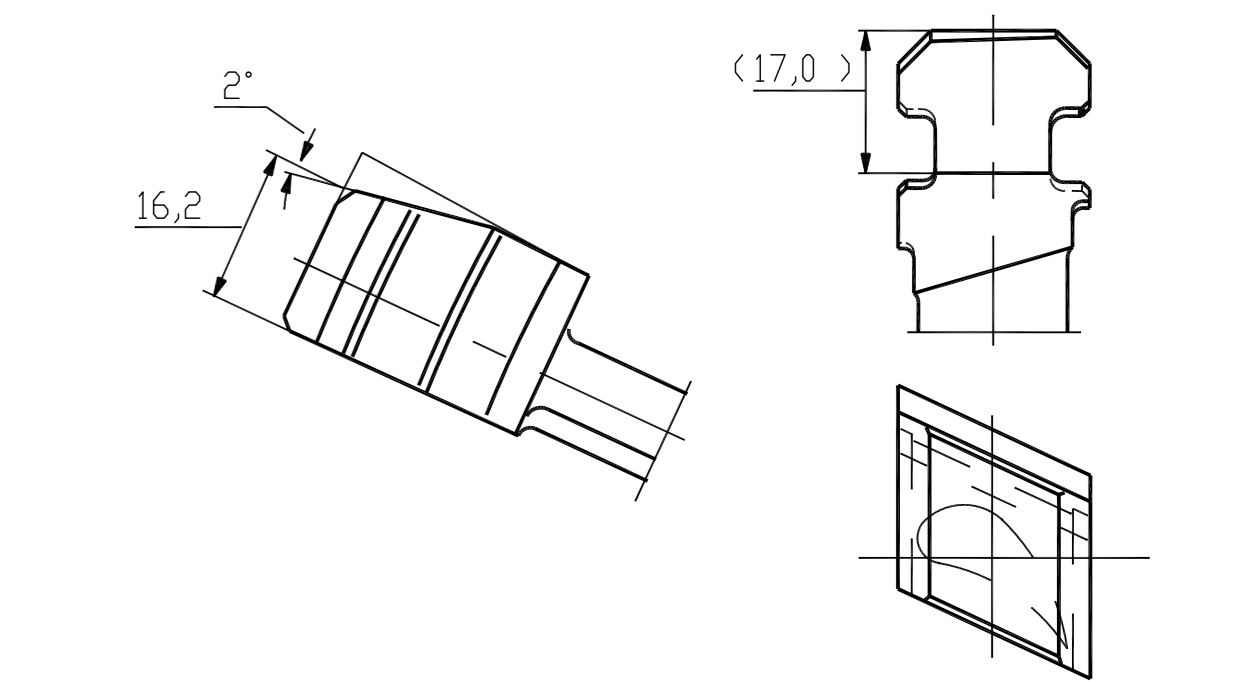
BLADE SHOWN IN DIRECTION OF STEAM FLOW

GUIDE BLADE AT JOINT PLANE (2 NO.)  
MADE BY REWORKING ON GUIDE BLADE (LEFT)



POS. NO : 02

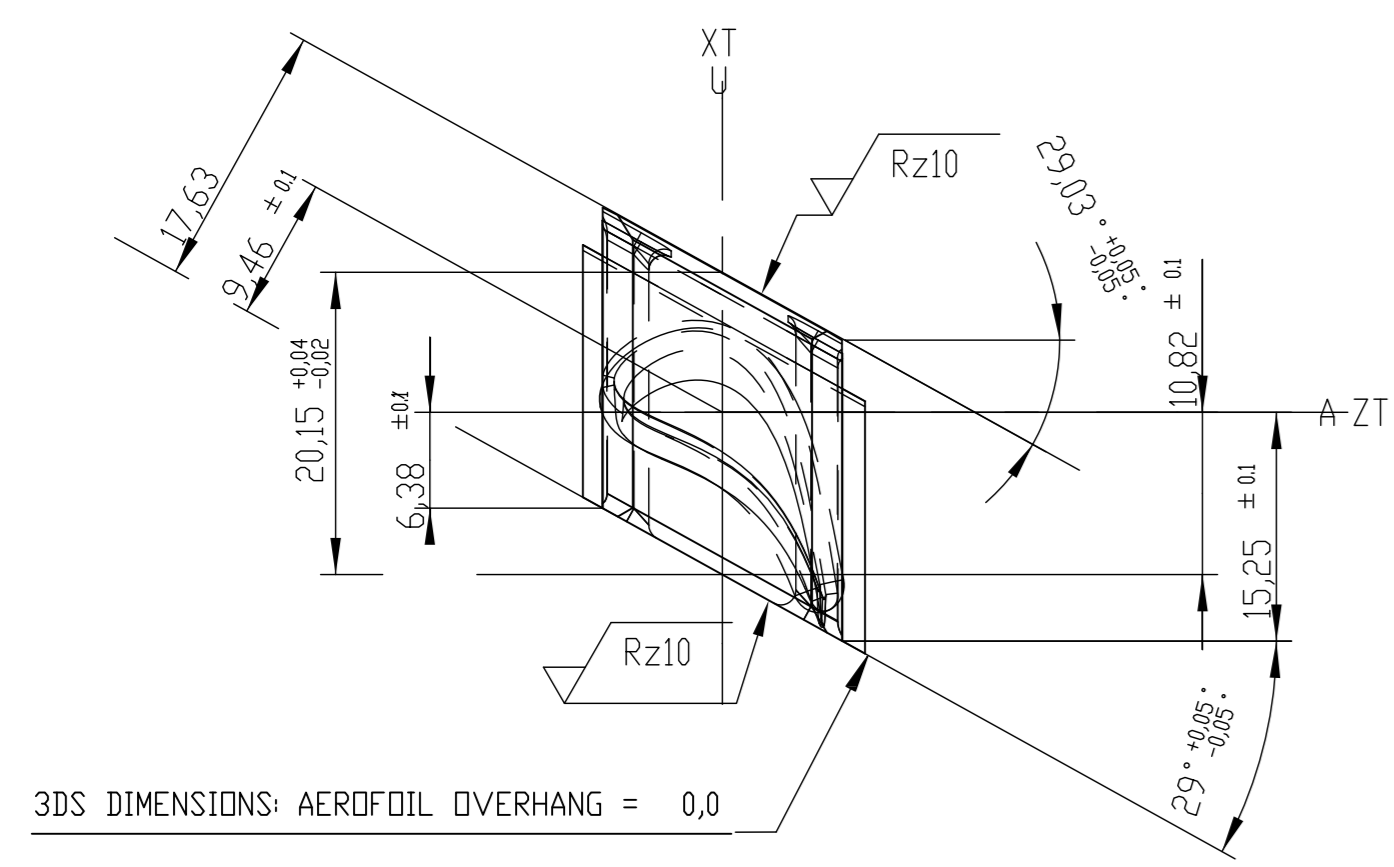
JOINT BLADE AT PARTING PLANE (2 NO.)  
MADE BY REWORKING ON GUIDE BLADE (RIGHT)



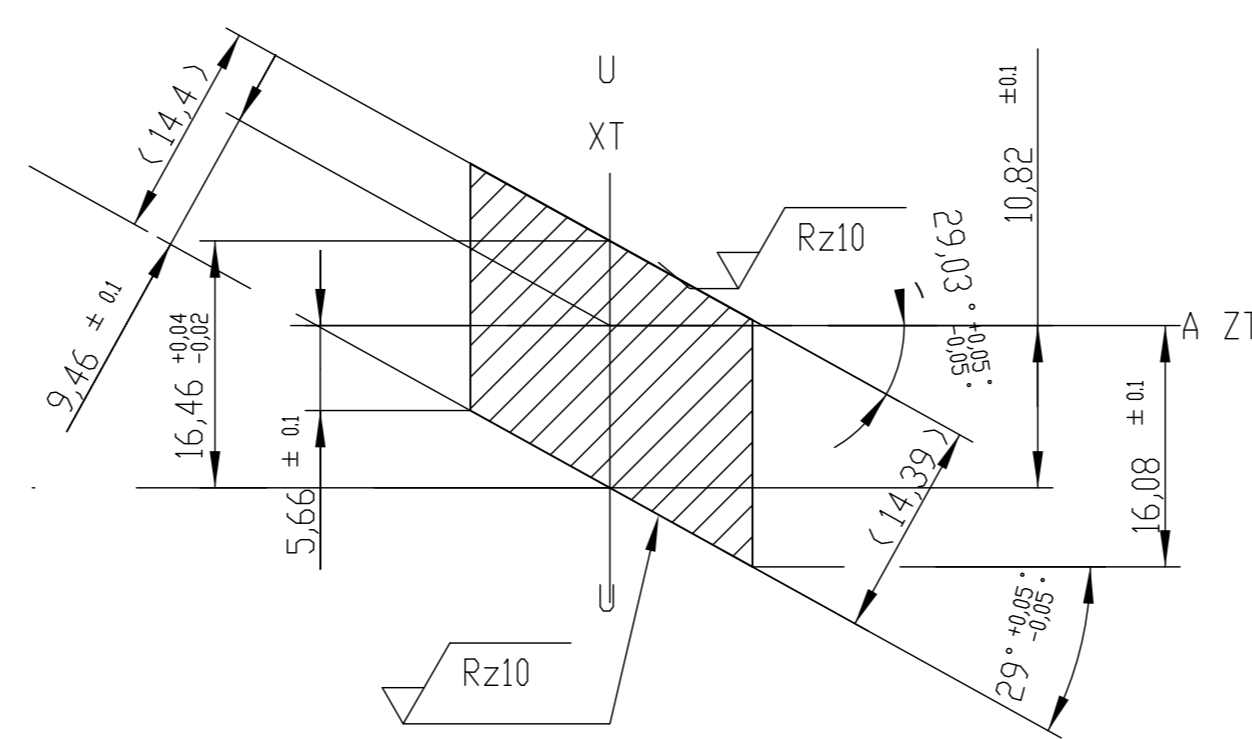
SECTION AX	Hx	Lges	AMI	UMA	Rhk	BBI	D
A1 - A1	-10.0	17.87	6.34	10.13	0.10	47.07	5.76
A2 - A2	0.0	18.45	6.54	4.65	0.10	46.67	5.95
A12-A12	10.0	19.03	6.74	2.17	0.10	46.29	6.13
A20-A20	18.0	19.50	6.90	2.32	0.10	45.98	6.28
A27-A27	25.0	19.91	7.04	2.62	0.11	45.72	6.42

LOCAL SMALLEST RADIUS OF CURVATURE ON PRESSURE SIDE: 11.7 MM

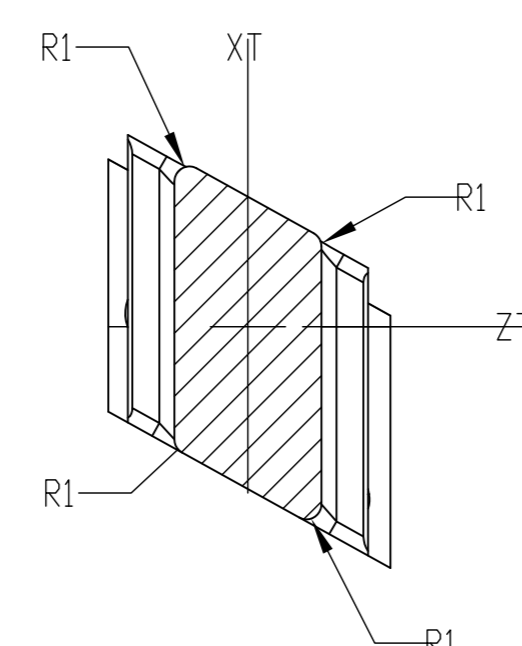
VIEW X



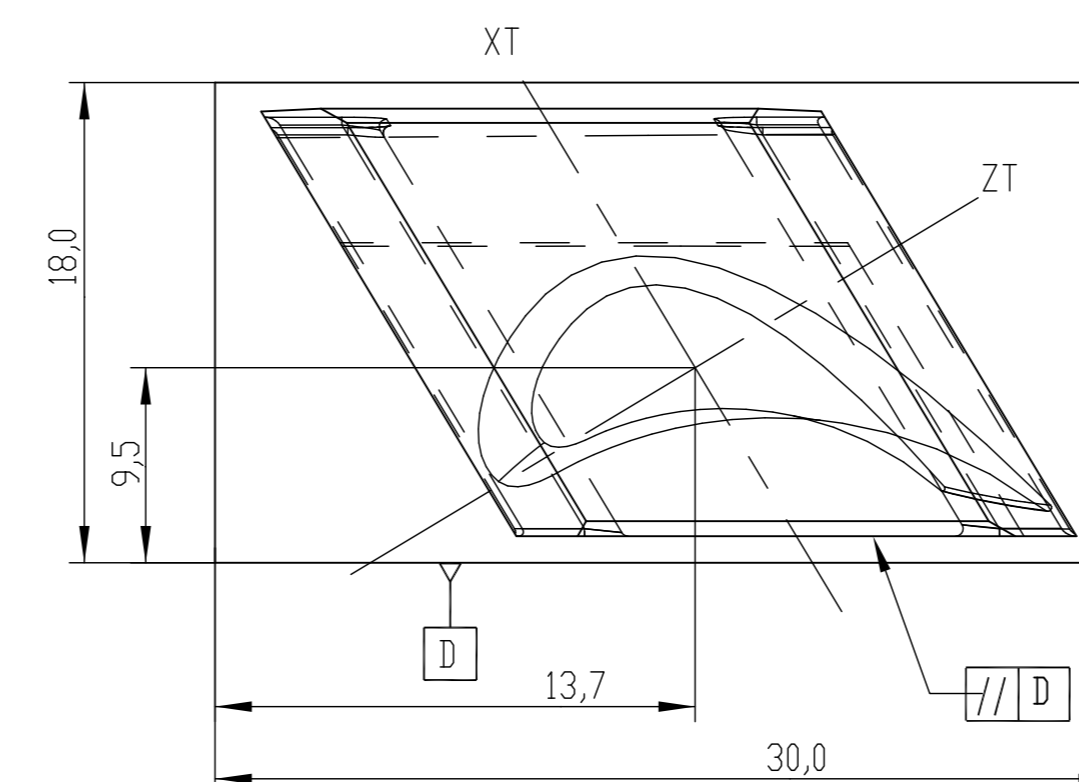
SECTION DD



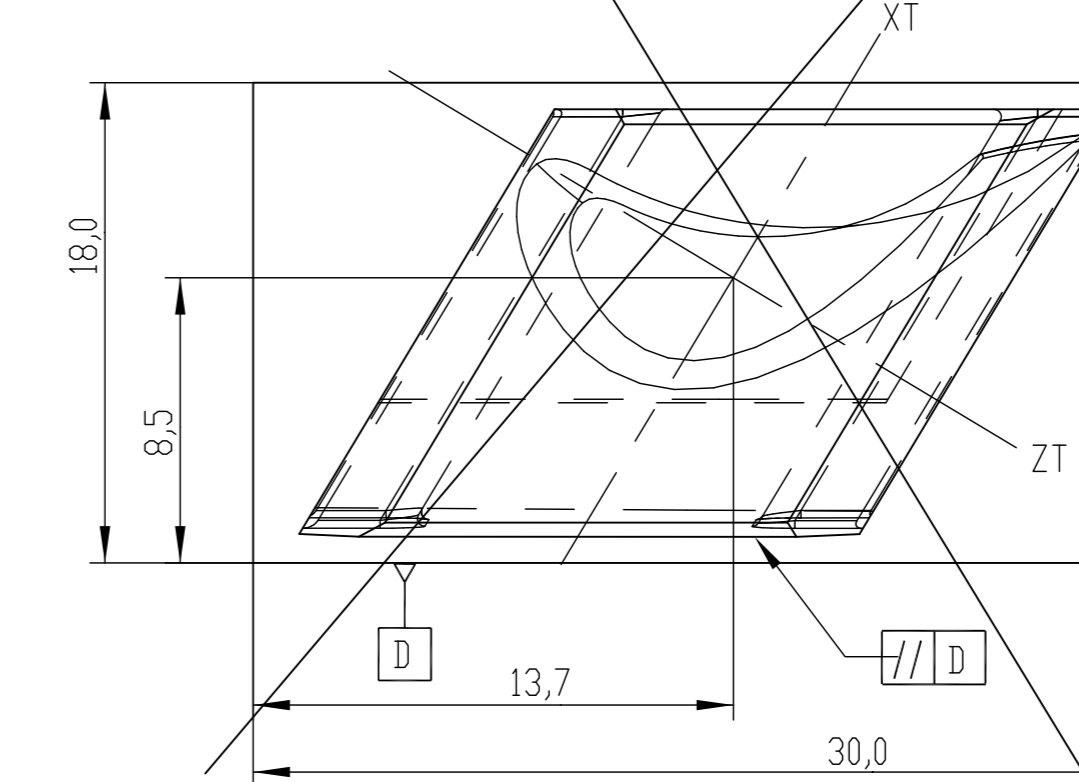
SECTION CC



DESIGN: "RIGHT"



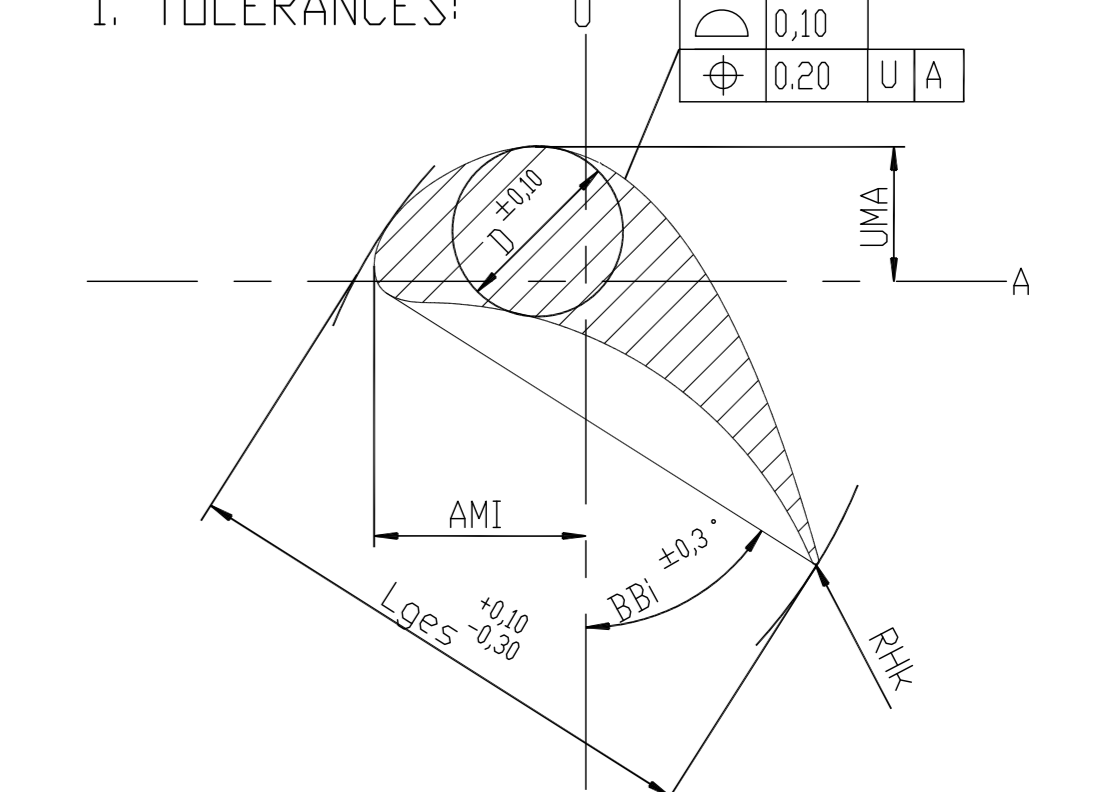
DESIGN: "LEFT"



CENTRE DISTANCES IN SEMI-FINISHED CONDITION

TECHNICAL REQUIREMENTS

1. TOLERANCES:



2. STRAK NUMBER: 90602  
3. NUMBER OF BLADES/ROW: 118  
(INCLUDING JOINT BLADES)

01 (RIGHT)	-01
ROW NO.	VAR

TYPE OF PRODUCT OR NAME OF CUSTOMER/PROJECT		NAME		DATE		NO OF VAR.	
BHARAT HEAVY ELECTRICALS LTD HYDERABAD		HEMASUNDAR		08/02/2014		-NA-	
DEPT: L13		CHD: K		APPD: T.S.PRADEEP		REV: 00	
UNITS: G		SCALE: 1:1		WEIGHT: 0.10		REF. TO ASSY. DRG. -NA-	
DIMS: C/M/F		SCALE: NTS		WEIGHT: 0.10		REF. TO ASSY. DRG. -NA-	
CODE: 45		SCALE: NTS		WEIGHT: 0.10		REF. TO ASSY. DRG. -NA-	
DRAWING NO. 0-105-18-62007		REV. 00		SHEET NO. 01		NO. OF SHEETS 23	

THE INFORMATION ON THIS DOCUMENT IS THE PROPERTY OF BHARAT HEAVY ELECTRICALS LIMITED. IT MUST NOT BE USED DIRECTLY OR INDIRECTLY IN ANY WAY DETRIMENTAL TO THE INTEREST OF THE COMPANY

GENERAL DIMENSIONAL LIMITS, FITS & TOLERANCES AS PER HY02302661