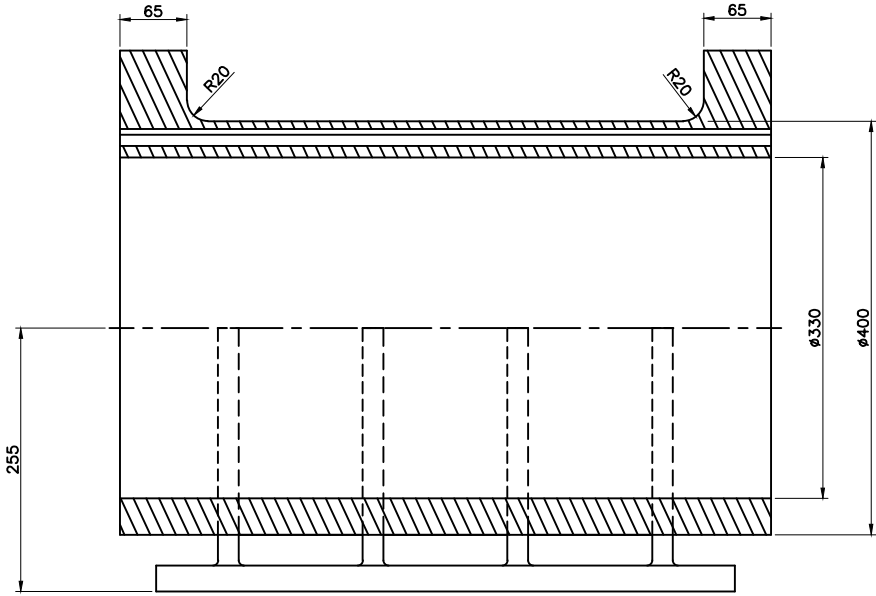
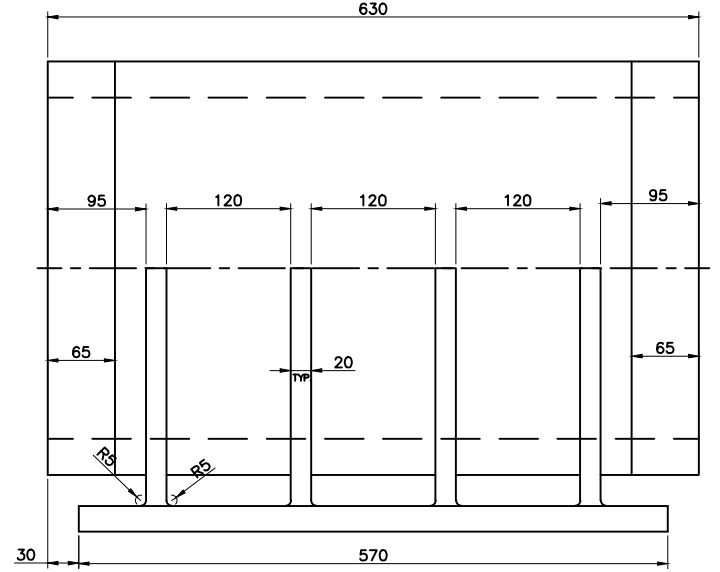
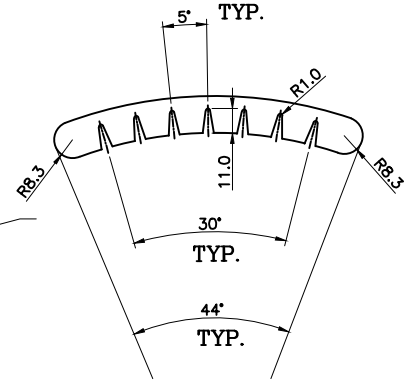
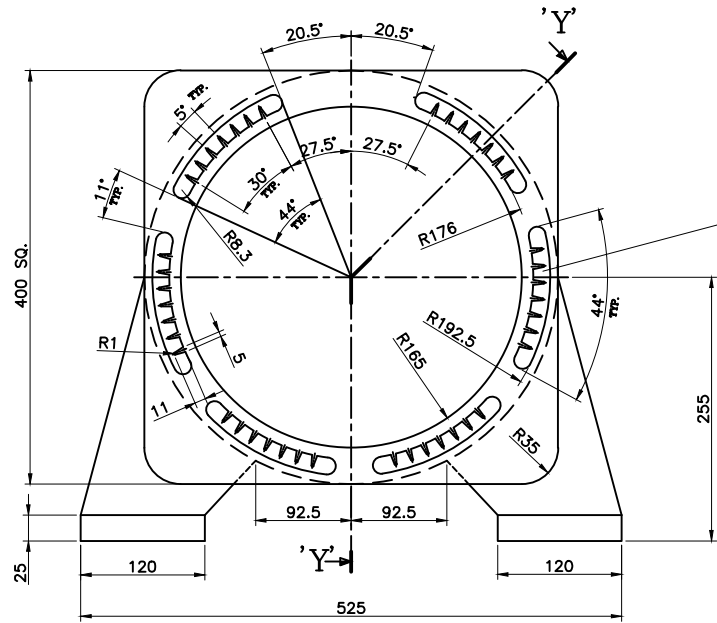



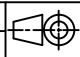
INVENTORY NO. REF.DRG.NO. COMP. FILE NAME THE INFORMATION ON THIS DOCUMENT IS THE PROPERTY OF BHARAT HEAVY ELECTRICALS LIMITED. IT MUST NOT BE USED DIRECTLY OR INDIRECTLY IN ANY WAY DETRIMENTAL TO THE INTEREST OF THE COMPANY.



SECTION- 'YY'

**Technical Requirements:**

1. Aluminium Alloy AlSi10Mg-T6 as per DIN (LM-9) grade material to be used for making the Casting.
2. The Six (6) segments cross section in the frame are to be matched and inline with those opening on the End Covers. Refer the drawing attached.
3. The Casting has to be supplied in Rough machined as required to maintain dimensions.
4. Casting to be sand blasted for removing any projections and unwanted deposits.
5. Dye Penetrant test should be conducted on rough machined surfaces and critical surfaces such as Foot structure joining the frame, end faces and frame ID.
6. Suitable primer to be applied on the casting.
7. Approximate weight of the casting will be 80 kgs (for indicative only).

TYPE OF PRODUCT OR NAME OF CUSTOMER/PROJECT		<b>PMSM -150</b>			
 BHARAT HEAVY ELECTRICALS LIMITED Corp. R&D Division, Vikasnagar HYDERABAD - 500 093	NAME	SIGN.	DATE	NO.OF VAR.	
	DRN. GVN				
	CHD. GVN				
APPD. SKR					
DEPT.	 SCALE	WEIGHT(Kg)	REF. TO ASSY DRG.	ITEM NO.	NO.OF ITEMS
CODE					
TITLE			DRAWING NO.		REV.
Stator Frame Casting (Unmachined)			2DC157050006		00
			SHEET NO.	NO OF SHEETS	

REV.	DATE	ALTERED CHECKED	APPD.	REV.	DATE	ALTERED CHECKED	APPD.	REV.	DATE	ALTERED CHECKED	APPD.	REV.	DATE	ALTERED CHECKED	APPD.	ZONE