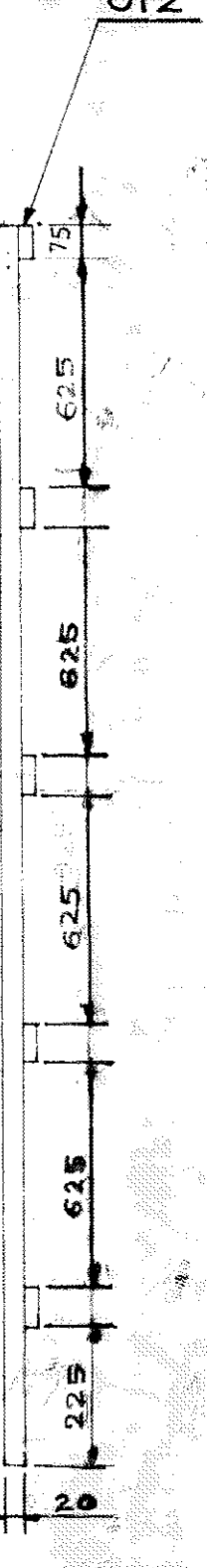
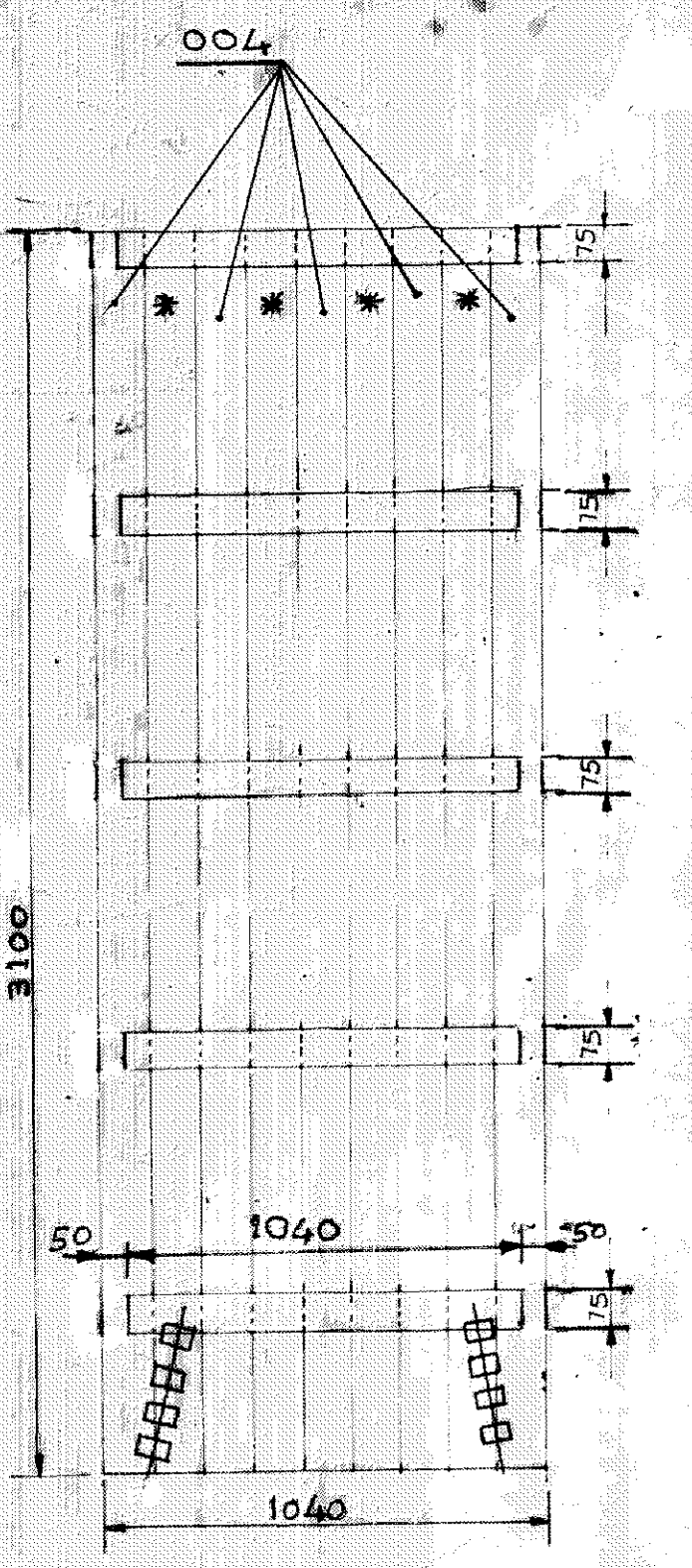
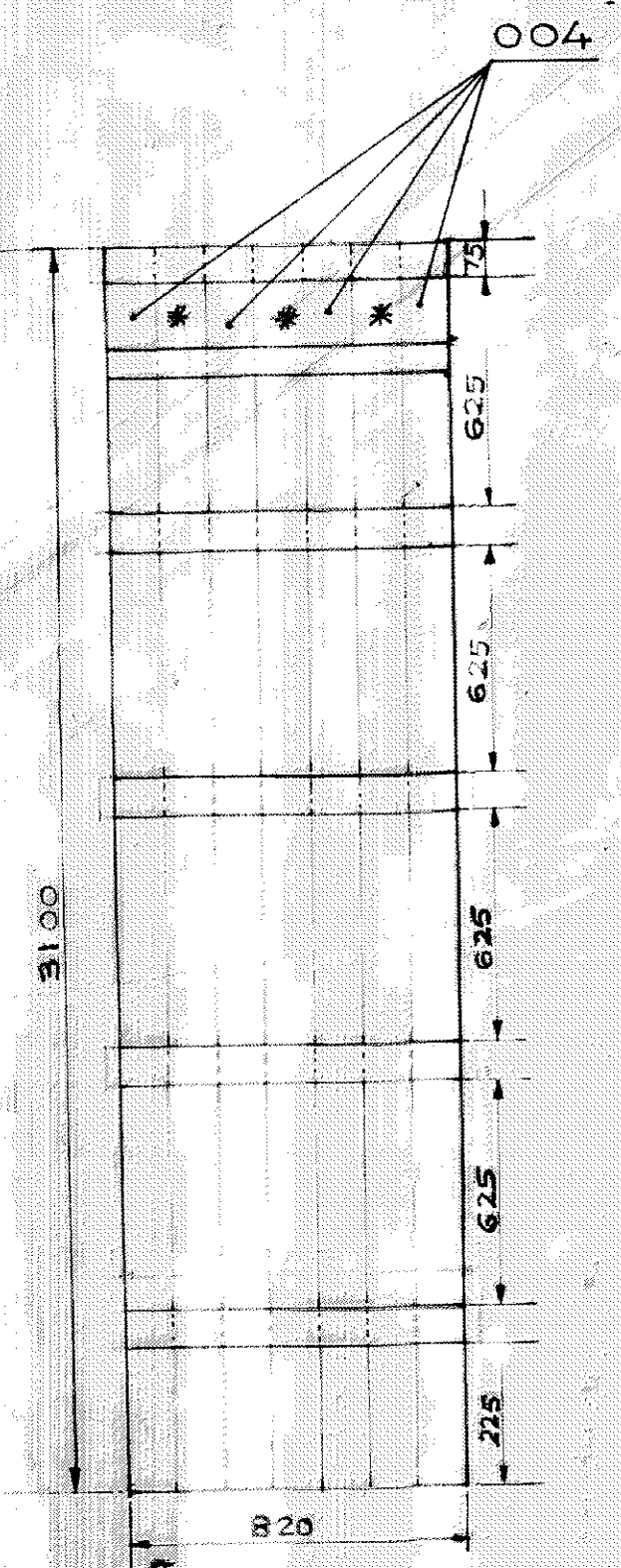
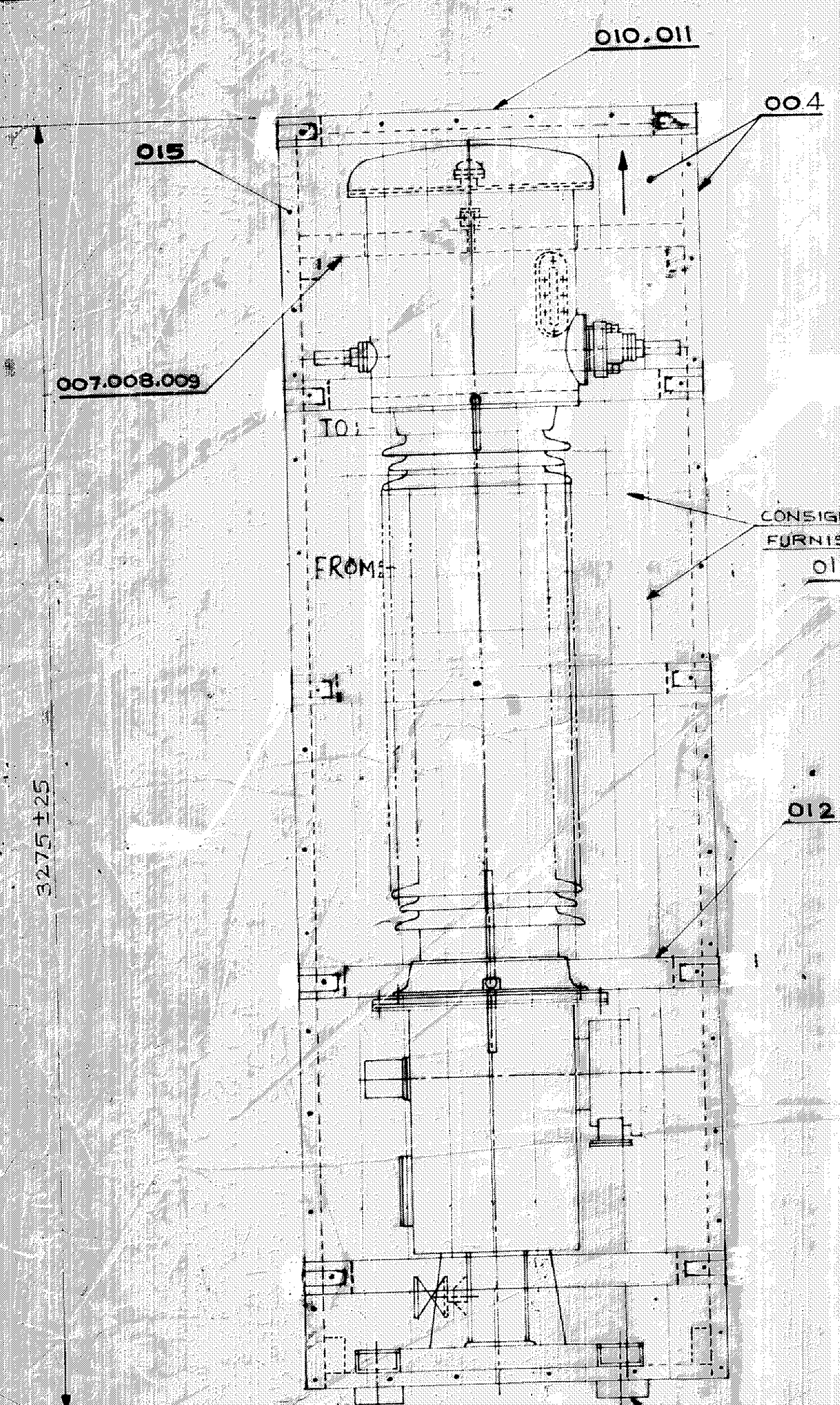


DRG. NO. 1476 8050006

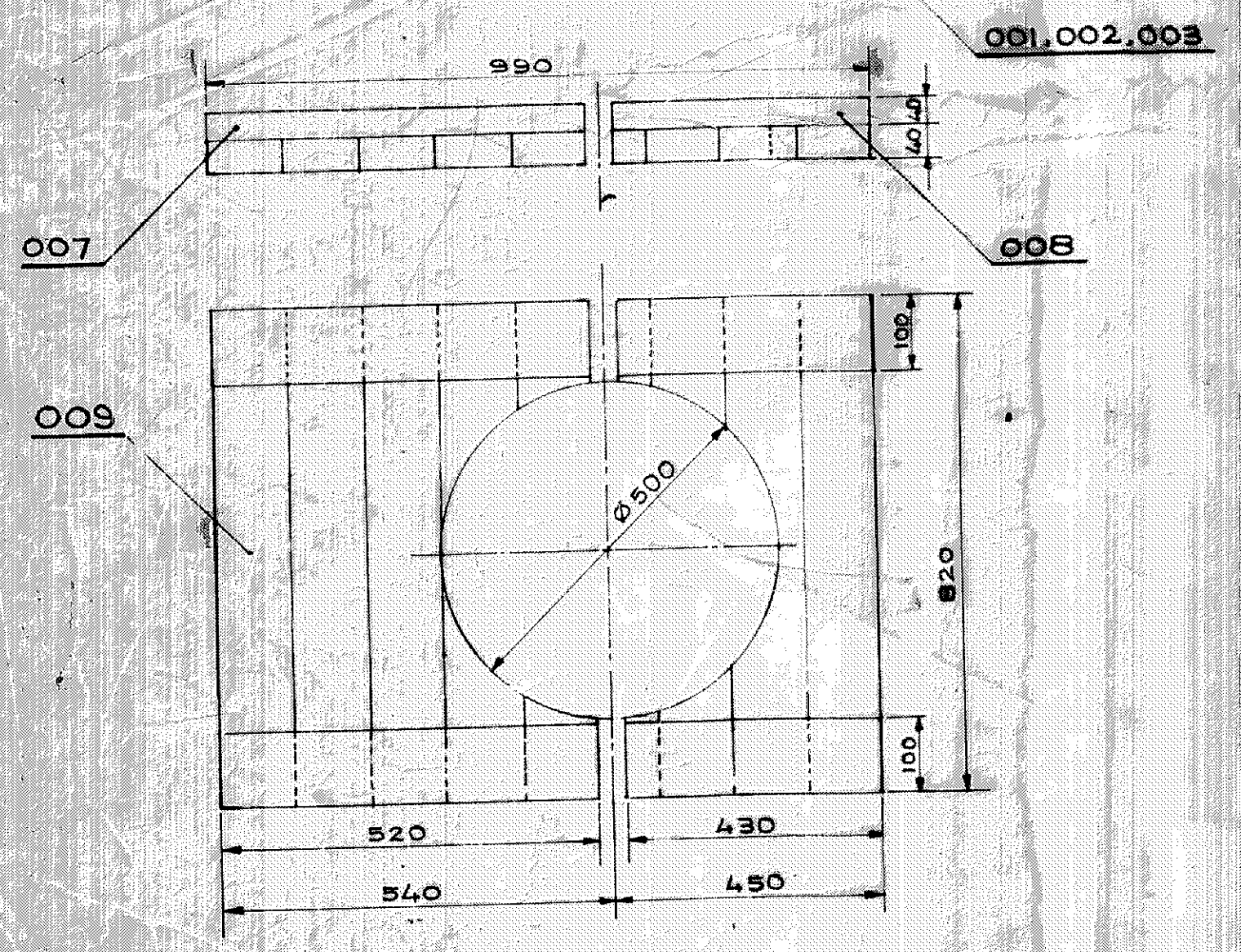


SIDE - 2 OFF

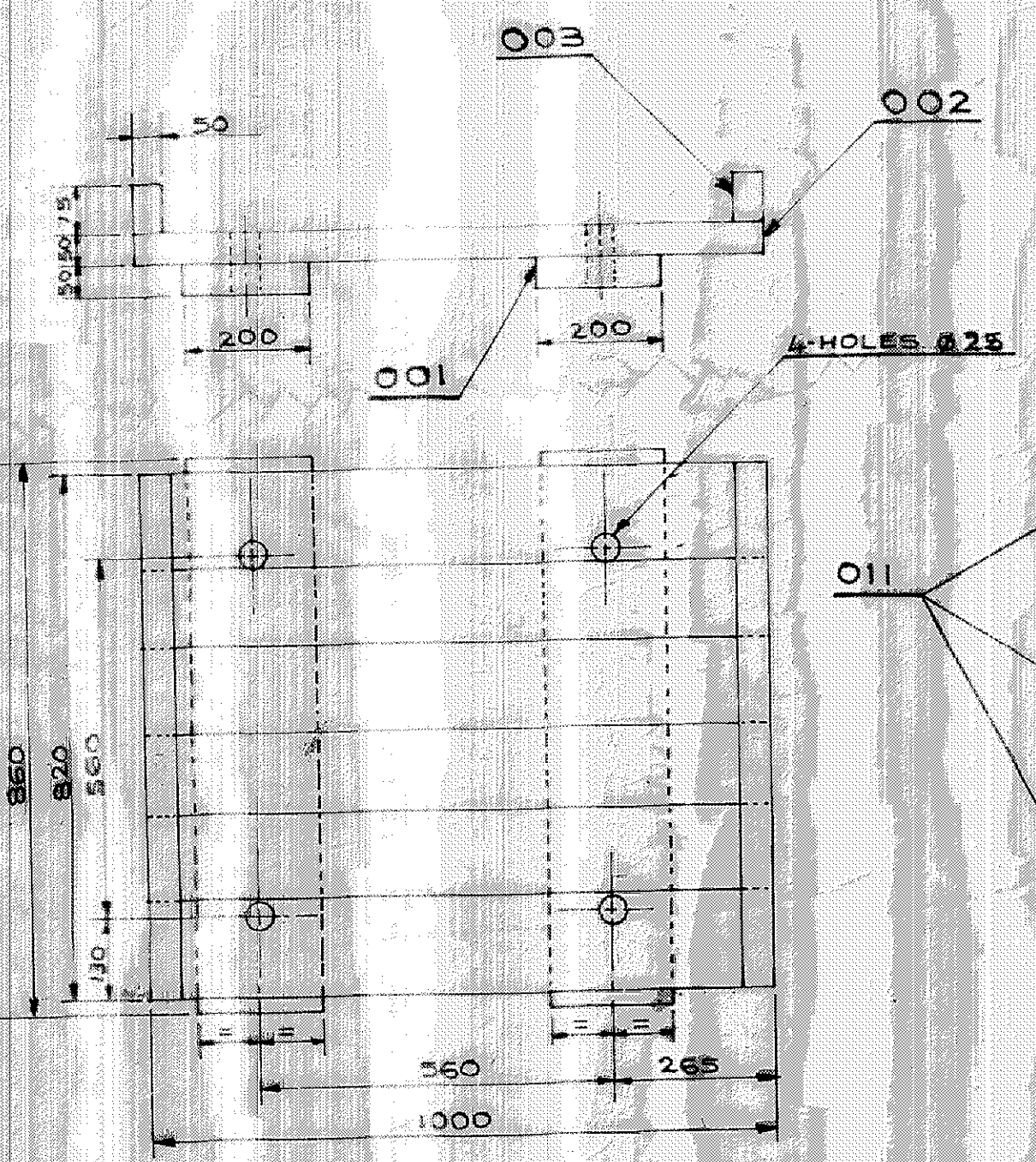
FRONT - 2 OFF

NETT VOLUME OF TIMBER = 0.332 CU. M.

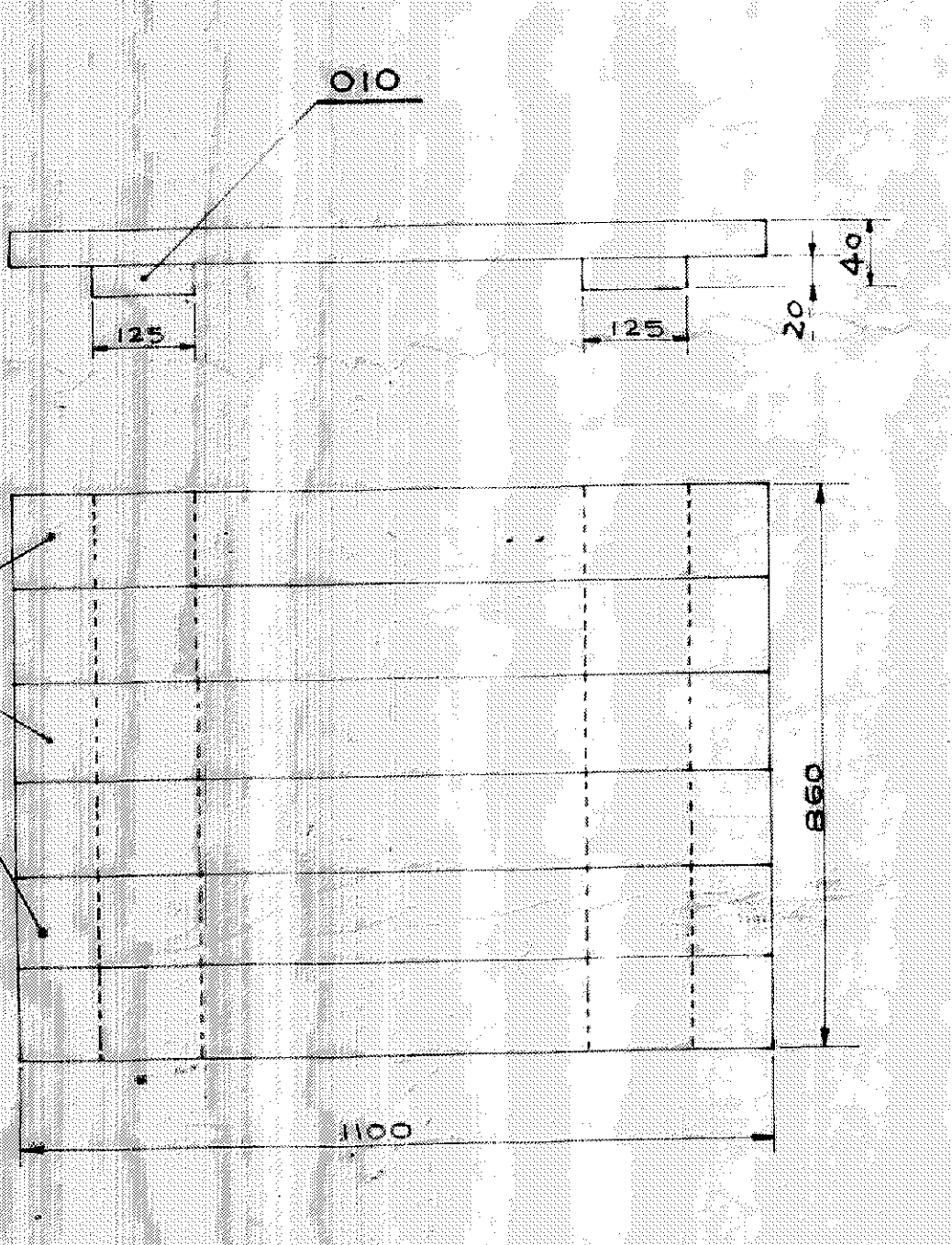
- NOTE - 1. TO STORE THE CTs PLEASE KEEP IT VERTICALLY.
 2. * GAPS SHOULD BE EQUALLY SPACED BETWEEN 2 PLANKS.
 3. MARK SLINGING POSITION ON THE BOTTOM OF FRONT SIDE.



TOPCHAMBER SUPPORT



BASE



TOP

ASREQD	ITEM NO.	DESCRIPTION	DRAWING NO.	MATL. CODE	UNIT WT.	QTY
	015	NAILS				
	014	STEEL STRIP 0.5TK x 25				
10	013	WOODEN BATTON 50TK x 75 x 820 LG.		PS 51414		0.031
10	012	WOODEN BATTON 50TK x 75 x 1040 LG.		"		0.039
06	011	WOODEN PLANK 20TK x 140 x 1100 LG.		"		0.018
02	010	WOODEN PLANK 20TK x 125 x 860 LG.		"		0.004
11	009	WOODEN BATTON 40TK x 90 x 820		"		0.032
02	008	WOODEN BATTON 40TK x 100 x 430 LG.		"		0.003
02	007	WOODEN BATTON 40TK x 100 x 520 LG.		PS 51414		0.004
	006					
02	005	WOODEN BATTON 50TK x 40 x 820 LG.				0.003
18	004	WOODEN PLANK 20TK x 120 x 3100 LG.		PS 51414		0.134
02	003	WOODEN BATTON 50TK x 75 x 820 LG.		"		0.006
06	002	WOODEN BATTON 50TK x 135 x 1000 LG.		"		0.041
02	001	WOODEN BATTON 50TK x 200 x 860 LG.		PS 51414		0.017

ADDITIONAL INFORMATION

STATUS OF DRAWING: []

DISTRIBUTION OF PRINTS: []

TYPE OF PRODUCT: FOR 132 KVCT MODIFIED TANK - COL. B.

NAME OF CUSTOMER/PROJECT: BHARAT HEAVY ELECTRICAL LTD, JHANSI

DATE: 15/11/94

SCALE: N.T.S.

WEIGHT: 0.332 CU. M.

TITLE: PACKING CRATE FOR 132 KVCT (TANK - COL. B.)

DRAWING NO.: 1476 8050006

SHEET NO.: 02

THE INFORMATION ON THIS DOCUMENT IS THE PROPERTY OF BHARAT HEAVY ELECTRICALS LIMITED. IT MUST NOT BE USED DIRECTLY OR INDIRECTLY IN ANY WAY DETRIMENTAL TO THE INTEREST OF THE COMPANY.