



TRICHY, BHEL, TRICHY, POSTAL CODE :620014, TIRUCHIRAPALLI, TAMIL NADU, INDIA

## RFQ/NIT HEADER DETAIL

ORGANIZATION NAME TRICHY, BHEL RFQ FLOATED UNDER THE PURCHASE POLICY  
 POLICY  
 RFQ/NIT REFERENCE 1901600142 (OPEN TENDER) RFQ OWNER/NIT MR VEERA KUMAR J (AE1/PUR)  
 CODE/ENQUIRY NO OFFICER/ENQUIRY OWNER  
 NUMBER OF ITEMS ALREADY 15  
 ATTACHED  
 CURRENCY ANY  
 DESCRIPTION TUBE END COVER  
 DETAILED DESCRIPTION TUBE END COVER  
 NUMBER OF BID PART(S) 2 PUBLISHED DATE 09/06/2016 02:06:43 PM

## ATTRIBUTE(S)

ATTRIBUTE NAME	ATTRIBUTE VALUE
Delivery at	BHEL TRICHY STORES
Inspection By	BHEL AT TRICHY STORES
Validity of the Offer	PRICE SHOULD BE FIXED AND VALID FOR 90 DAYS FROM THE DATE OF OFFER
Inspection	VENDORWORKS
Pre-Bid meeting date	2016-06-20 00:00:00.0

## DATE-TIME DETAIL(S)

BID START DATE Jun 9, 2016 BID DUE DATE Jun 25, 2016 02:00:00:PM  
 BID OPEN DATE Jun 25, 2016 02:30:00:PM  
 (SCHEDULED)

## PRE-BID DISCUSSION DETAILS

PRE-BID DISCUSSION TYPE NOT REQUIRED

## ALTERNATE BID DECRYPTOR(S)

USER DETAILS
MR B. SANJEEVI (DGM/PUR)
MR ABRAHAM VICTOR P G (SM/PUR)
MR KILLIVALAVAN R (ENGR/PUR)
MR NARAYANAN R (DGM/PUR)
MR RAJA PRAKASH K (ENGR/PUR)
MR VEERA KUMAR J (AE1/PUR)

## SELLER DETAIL(S)

CODE	ORGANIZATION NAME
023505	TEST (Mr test ot test)

## TERM AND CONDITION DETAIL(S) - SPECIAL TERM(S)

SL. NO.	CATEGORY	DESCRIPTION
1	SPECIAL TERM(S)	<p>SPECIAL TERM(S)</p> <p>TERMS AND CONDITIONS ENCLOSED</p> <p>The bidder along with its associate/ collaborators/ sub-contractors/ sub-vendors/ consultants/ serviceproviders shall strictly adhere to BHEL fraud prevention policy displayed on BHEL website <a href="http://www.bhel.com">http://www.bhel.com</a> and shall immediately bring to the notice of BHEL management about any fraud or suspected fraud as soon as it comes to their notice.</p>

## RFQ/NIT ITEM DETAILS

SL. NO.	CODE	DESCRIPTION	QUANTITY	RFQ/NIT U.O.M	OFFER U.O.M
10	000000220744580 000	TUBE END COVER INT DIA 12 BPS:6119-012 -022 REV 03 SUPPLY SHALL BE AS AND WHEN REQUIRED BY BHEL. INSPECTION BY BHEL TIRUCHY.	2,000.00	NUMBER	NUMBER





TRICHY, BHEL, TRICHY, POSTAL CODE :620014, TIRUCHIRAPALLI, TAMIL NADU, INDIA

ATTRIBUTE DETAILS		ATTRIBUTE NAME	ATTRIBUTE VALUE		
		MATERIAL CODE:	000000220744580000		
		MATERIAL GROUP:	ZINACTIVE		
		KILOGRAM PER UNIT:	0.0010		
		Cenvatable (Yes / No)	Yes		
		Delivery Location	TAMIL NADU		
		Vatable (Yes / No)	Yes		
		Delivery Date (i) :	31-DEC-2016		
		Delivery Qty (i) :	2000		
20	000000220744600000	TUBE END COVER INT DIA 18 BPS:6119-012 -024 REV 03SUPPLY SHALL BE AS AND WHEN REQUIRED BY BHEL.INSPECTION BY BHEL TIRUCHY.	30,000.00	NUMBER	NUMBER
ATTRIBUTE DETAILS		ATTRIBUTE NAME	ATTRIBUTE VALUE		
		MATERIAL CODE:	000000220744600000		
		MATERIAL GROUP:	ZINACTIVE		
		KILOGRAM PER UNIT:	0.0020		
		Cenvatable (Yes / No)	Yes		
		Delivery Location	TAMIL NADU		
		Vatable (Yes / No)	Yes		
		Delivery Date (i) :	31-DEC-2016		
		Delivery Qty (i) :	30000		
30	000000220744610000	TUBE END COVER INT DIA 21 BPS:6119-012 -025 REV 03SUPPLY SHALL BE AS AND WHEN REQUIRED BY BHEL.INSPECTION BY BHEL TIRUCHY.	25,000.00	NUMBER	NUMBER
ATTRIBUTE DETAILS		ATTRIBUTE NAME	ATTRIBUTE VALUE		
		MATERIAL CODE:	000000220744610000		
		MATERIAL GROUP:	ZINACTIVE		
		KILOGRAM PER UNIT:	0.0030		
		Cenvatable (Yes / No)	Yes		
		Delivery Location	TAMIL NADU		
		Vatable (Yes / No)	Yes		
		Delivery Date (i) :	31-DEC-2016		
		Delivery Qty (i) :	25000		
40	000000220744620000	TUBE END COVER INT DIA 24 BPS:6119-012 -026 REV 03SUPPLY SHALL BE AS AND WHEN REQUIRED BY BHEL.INSPECTION BY BHEL TIRUCHY.	130,000.00	NUMBER	NUMBER
ATTRIBUTE DETAILS		ATTRIBUTE NAME	ATTRIBUTE VALUE		
		MATERIAL CODE:	000000220744620000		
		MATERIAL GROUP:	ZINACTIVE		
		KILOGRAM PER UNIT:	0.0040		
		Cenvatable (Yes / No)	Yes		
		Delivery Location	TAMIL NADU		
		Vatable (Yes / No)	Yes		
		Delivery Date (i) :	31-DEC-2016		
		Delivery Qty (i) :	130000		
50	000000220744630000	TUBE END COVER INT DIA 27- BPS 6119-012 -027 REV 03SUPPLY SHALL BE AS AND WHEN REQUIRED BY BHEL.INSPECTION BY BHEL TIRUCHY.	80,000.00	NUMBER	NUMBER
ATTRIBUTE DETAILS		ATTRIBUTE NAME	ATTRIBUTE VALUE		
		MATERIAL CODE:	000000220744630000		
		MATERIAL GROUP:	ZINACTIVE		
		KILOGRAM PER UNIT:	0.0040		
		Cenvatable (Yes / No)	Yes		
		Delivery Location	TAMIL NADU		
		Vatable (Yes / No)	Yes		
		Delivery Date (i) :	31-DEC-2016		
		Delivery Qty (i) :	80000		
60	000000220744640000	TUBE END COVER INT DIA 30 BPS:6119-012- 028 REV 03SUPPLY SHALL BE AS AND WHEN REQUIRED BY BHEL.INSPECTION BY BHEL TIRUCHY.	5,000.00	NUMBER	NUMBER





TRICHY, BHEL, TRICHY, POSTAL CODE :620014, TIRUCHIRAPALLI, TAMIL NADU, INDIA

ATTRIBUTE DETAILS		ATTRIBUTE NAME	ATTRIBUTE VALUE		
		MATERIAL CODE:	000000220744660000		
		MATERIAL GROUP:	ZINACTIVE		
		KILOGRAM PER UNIT:	0.0040		
		Cenvatable (Yes / No)	Yes		
		Delivery Location	TAMIL NADU		
		Vatable (Yes / No)	Yes		
		Delivery Date (i) :	31-DEC-2016		
		Delivery Qty (i) :	5000		
70	000000220744660000	TUBE END COVER INT DIA 36 BPS:6119-012-030 REV 03SUPPLY SHALL BE AS AND WHEN REQUIRED BY BHEL.INSPECTION BY BHEL TIRUCHY.	15,000.00	NUMBER	NUMBER
ATTRIBUTE DETAILS		ATTRIBUTE NAME	ATTRIBUTE VALUE		
		MATERIAL CODE:	000000220744660000		
		MATERIAL GROUP:	ZINACTIVE		
		KILOGRAM PER UNIT:	0.0060		
		Cenvatable (Yes / No)	Yes		
		Delivery Location	TAMIL NADU		
		Vatable (Yes / No)	Yes		
		Delivery Date (i) :	31-DEC-2016		
		Delivery Qty (i) :	15000		
80	000000220744660000	TUBEEND COVER INT DIA 42 BPS:6119-012-032 REV 03SUPPLY SHALL BE AS AND WHEN REQUIRED BY BHEL.INSPECTION BY BHEL TIRUCHY.	16,000.00	NUMBER	NUMBER
ATTRIBUTE DETAILS		ATTRIBUTE NAME	ATTRIBUTE VALUE		
		MATERIAL CODE:	000000220744660000		
		MATERIAL GROUP:	ZINACTIVE		
		KILOGRAM PER UNIT:	0.0070		
		Cenvatable (Yes / No)	Yes		
		Delivery Location	TAMIL NADU		
		Vatable (Yes / No)	Yes		
		Delivery Date (i) :	31-DEC-2016		
		Delivery Qty (i) :	16000		
90	000000220744660000	TUBE END COVER INT DIA 45 BPS:6119-012-033 REV 03SUPPLY SHALL BE AS AND WHEN REQUIRED BY BHEL.INSPECTION BY BHEL TIRUCHY.	2,000.00	NUMBER	NUMBER
ATTRIBUTE DETAILS		ATTRIBUTE NAME	ATTRIBUTE VALUE		
		MATERIAL CODE:	000000220744660000		
		MATERIAL GROUP:	ZINACTIVE		
		KILOGRAM PER UNIT:	0.0080		
		Cenvatable (Yes / No)	Yes		
		Delivery Location	TAMIL NADU		
		Vatable (Yes / No)	Yes		
		Delivery Date (i) :	31-DEC-2016		
		Delivery Qty (i) :	2000		
100	000000220744740000	TUBE END COVER INT DIA 60 BPS:6119-012-038 REV 03SUPPLY SHALL BE AS AND WHEN REQUIRED BY BHEL.INSPECTION BY BHEL TIRUCHY.	2,000.00	NUMBER	NUMBER
ATTRIBUTE DETAILS		ATTRIBUTE NAME	ATTRIBUTE VALUE		
		MATERIAL CODE:	000000220744740000		
		MATERIAL GROUP:	ZINACTIVE		
		KILOGRAM PER UNIT:	0.013		
		Cenvatable (Yes / No)	Yes		
		Delivery Location	TAMIL NADU		
		Vatable (Yes / No)	Yes		
		Delivery Date (i) :	31-DEC-2016		
		Delivery Qty (i) :	2000		
110	000000220745720000	TUBE END COVER EXT FOR OD 31.8 BPS:6119-012-223 REV 06SUPPLY SHALL BE AS AND WHEN REQUIRED BY BHEL.INSPECTION BY BHEL TIRUCHY.	3,000.00	NUMBER	NUMBER





TRICHY, BHEL, TRICHY, POSTAL CODE :620014, TIRUCHIRAPALLI, TAMIL NADU, INDIA

ATTRIBUTE DETAILS		ATTRIBUTE NAME	ATTRIBUTE VALUE		
		MATERIAL CODE:	000000220745720000		
		MATERIAL GROUP:	ZINACTIVE		
		KILOGRAM PER UNIT:	0.0050		
		Cenvatable (Yes / No)	Yes		
		Delivery Location	TAMIL NADU		
		Vatable (Yes / No)	Yes		
		Delivery Date (i) :	31-DEC-2016		
		Delivery Qty (i) :	3000		
120	000000220745770000	TUBE END COVER EXT FOR OD 54 BPS:6119-012-228 REV 06SUPPLY SHALL BE AS AND WHEN REQUIRED BY BHEL.INSPECTION BY BHEL TIRUCHY.	20,000.00	NUMBER	NUMBER
		MATERIAL CODE:	000000220745770000		
		MATERIAL GROUP:	ZINACTIVE		
		KILOGRAM PER UNIT:	0.017		
		Cenvatable (Yes / No)	Yes		
		Delivery Location	TAMIL NADU		
		Vatable (Yes / No)	Yes		
		Delivery Date (i) :	31-DEC-2016		
		Delivery Qty (i) :	20000		
130	000000220745780000	TUBE END COVER EXT FOR OD 57 BPS:6119-012-229 REV 06SUPPLY SHALL BE AS AND WHEN REQUIRED BY BHEL.INSPECTION BY BHEL TIRUCHY.	15,000.00	NUMBER	NUMBER
		MATERIAL CODE:	000000220745780000		
		MATERIAL GROUP:	ZINACTIVE		
		KILOGRAM PER UNIT:	0.019		
		Cenvatable (Yes / No)	Yes		
		Delivery Location	TAMIL NADU		
		Vatable (Yes / No)	Yes		
		Delivery Date (i) :	31-DEC-2016		
		Delivery Qty (i) :	15000		
140	000000220745800000	TUBE END COVER EXT FOR OD 63.5 BPS:6119-012-230 REV 06SUPPLY SHALL BE AS AND WHEN REQUIRED BY BHEL.INSPECTION BY BHEL TIRUCHY.	3,000.00	NUMBER	NUMBER
		MATERIAL CODE:	000000220745800000		
		MATERIAL GROUP:	ZINACTIVE		
		KILOGRAM PER UNIT:	0.021		
		Cenvatable (Yes / No)	Yes		
		Delivery Location	TAMIL NADU		
		Vatable (Yes / No)	Yes		
		Delivery Date (i) :	31-DEC-2016		
		Delivery Qty (i) :	3000		
150	000000220745830000	TUBE END COVER EXT FOR OD 88.9 BPS:6119-012-233 REV 06SUPPLY SHALL BE AS AND WHEN REQUIRED BY BHEL.INSPECTION BY BHEL TIRUCHY.	2,000.00	NUMBER	NUMBER
		MATERIAL CODE:	000000220745830000		
		MATERIAL GROUP:	ZINACTIVE		
		KILOGRAM PER UNIT:	0.012		
		Cenvatable (Yes / No)	Yes		
		Delivery Location	TAMIL NADU		
		Vatable (Yes / No)	Yes		
		Delivery Date (i) :	31-DEC-2016		
		Delivery Qty (i) :	2000		





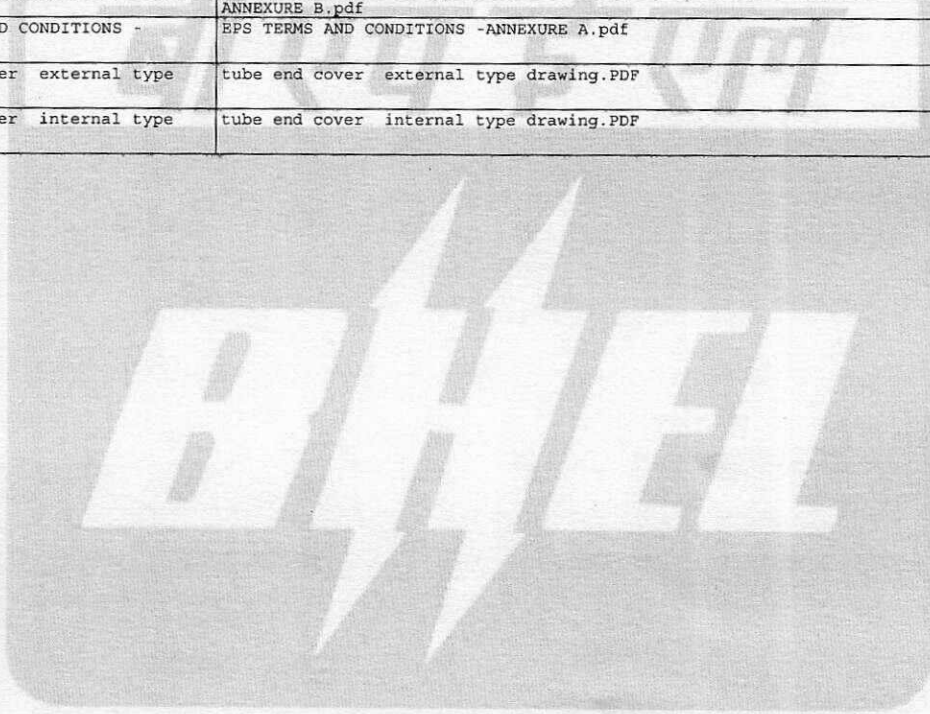
TRICHY, BHEL, TRICHY, POSTAL CODE :620014, TIRUCHIRAPALLI, TAMIL NADU, INDIA

**IMPORTANT NOTICE**

PLEASE READ THE FOLLOWING ATTACHMENT(S) [SEPARATELY DOWNLOADABLE] ALONG WITH THIS RFQ/NIT/ENQUIRY .

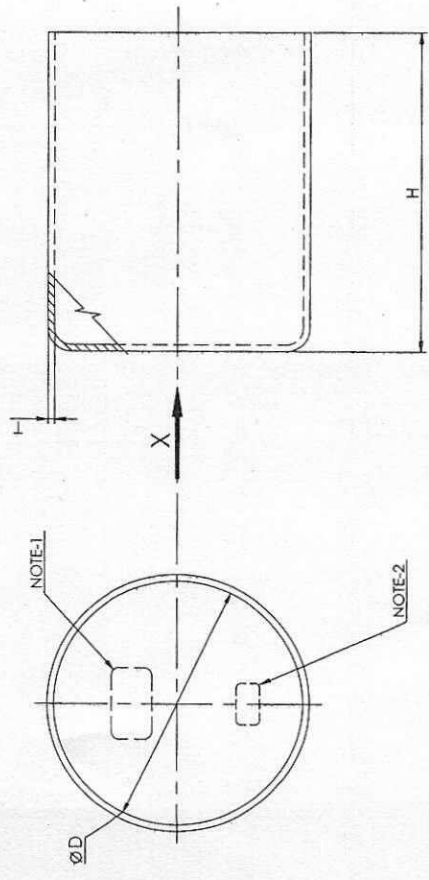
**RFQ/NIT/ENQUIRY - ATTACHMENTS**

LABEL	FILE NAME
ANNEXURE C	ANNEXURE C.pdf
CA CERTIFICATE FORMAT	CA CERTIFICATE FORMAT.pdf
ANNEXURE B	ANNEXURE B.pdf
EPS TERMS AND CONDITIONS - ANNEXURE A	EPS TERMS AND CONDITIONS -ANNEXURE A.pdf
tube end cover external type drawing	tube end cover external type drawing.PDF
tube end cover internal type drawing	tube end cover internal type drawing.PDF



2210-6119

ION SHIMWARD



NOTES:-

1. STAMP THE EMBLEM ACCORDING TO AA 0401121 IN THE DIRECTION 'X'.
2. STAMP THE APPROPRIATE NOM. SIZE IN THE DIRECTION 'X'.
3. MATERIAL: UREA FORMALDEHYDE CONFIRMING TO IS:3389 (OR) POLY VINYL CHLORIDE (PVC) (OR) HIGH DENSITY POLY ETHELYNE (HDPE).
4. THE END COVERS SHALL BE FLEXIBLE TO FIT TIGHTLY OVER THE TUBE AND WITHSTAND SHOCK DURING HANDLING AND TRANSIT OF THE TUBES.
5. COLOUR: THE END COVERS SHALL BE OF WHITE IN COLOUR OF VIRGIN QUALITY MATERIAL.
6. SPECIFICATION SHALL BE EMBOSSED ON OUTER SURFACE OF THE END CAP AND NEAR TO SIZE OF THE CAPS AS FOLLOWS:
  - i) UREA FORMALDEHYDE CONFIRMING TO IS:3389 ----- EMBOSSED AS "UF".
  - ii) POLY VINYL CHLORIDE ----- EMBOSSED AS "PVC".
  - iii) HIGH DENSITY POLY ETHELYNE ----- EMBOSSED AS "HDP".



FOR TOLERANCES OF UNTOLERANCED DIMENSIONS DURING MANUFACTURE REFER PLANT STD. NO. TP. 023 0299

REV	DATE	ALTERED	BY	DATE	ALTERED	BY	DATE	ALTERED	BY	DESCRIPTION	ITEM NUMBER	VARIANT NUMBER	EMBLEM SIZE	T	H	PIPE OD	EMBLEM SIZE	DESCRIPTION	DRAWING NUMBER	ITEM NO	MATERIAL CODE	UNIT WEIGHT	QUANTITY
05	18.03.16	CHD & APPD	N.K	03	01.07.93	CHD & APPD	T.K	02	02.05.91	CHD & APPD	G.R							TUBE END COVER EXT FOR OD 42.4	6119 0122 34	22 073 758	0.009	0.009	
04	11.03.98	CHD & APPD	K.R.S	03	01.07.93	CHD & APPD	T.K	02	02.05.91	CHD & APPD	G.R							TUBE END COVER EXT FOR OD 88.9	6119 0122 33	22 074 583	0.054	0.054	
03	01.07.93	CHD & APPD	T.K	02	02.05.91	CHD & APPD	T.K	02	02.05.91	CHD & APPD	G.R							TUBE END COVER EXT FOR OD 76.1	6119 0122 32	22 074 582	0.033	0.033	
02	02.05.91	CHD & APPD	T.K	01	23.03.87	CHD & APPD	T.K	01	23.03.87	CHD & APPD	T.K							TUBE END COVER EXT FOR OD 70	6119 0122 31	22 074 581	0.031	0.031	
01	23.03.87	CHD & APPD	T.K	01	23.03.87	CHD & APPD	T.K	01	23.03.87	CHD & APPD	T.K							TUBE END COVER EXT FOR OD 63.5	6119 0122 30	22 074 580	0.021	0.021	
																		TUBE END COVER EXT FOR OD 57	6119 0122 29	22 074 578	0.019	0.019	
																		TUBE END COVER EXT FOR OD 54	6119 0122 28	22 074 577	0.017	0.017	
																		TUBE END COVER EXT FOR OD 51	6119 0122 27	22 074 576	0.015	0.015	
																		TUBE END COVER EXT FOR OD 47.63	6119 0122 26	22 074 575	0.012	0.012	
																		TUBE END COVER EXT FOR OD 44.5	6119 0122 25	22 074 574	0.010	0.010	
																		TUBE END COVER EXT FOR OD 38	6119 0122 24	22 074 573	0.008	0.008	
																		TUBE END COVER EXT FOR OD 31.8	6119 0122 23	22 074 572	0.005	0.005	
																		TUBE END COVER EXT FOR OD 21.3	6119 0122 22	22 074 571	0.004	0.004	
																		TUBE END COVER EXT FOR OD 14	6119 0122 21	22 074 570	0.002	0.002	

TYPE OF PRODUCT OR NAME OF CUSTOMER/PROJECT

Bharat Heavy Electricals Ltd  
UNIT: HIGH PRESSURE BOILER PLANT  
THIRUCHIRAPPALLI - 620014

PRODUCTION SCALE  
N/S

WEIGHT (KG)  
REFER UNIT WT.

REF TO ASST / G.D DWG  
BPS 317503

DATE  
01.09.1982

DATE  
01.09.1982

DATE  
01.09.1982

REV 05 18.03.16 CHD & APPD : N.K

REV 04 11.03.98 CHD & APPD : K.R.S

REV 03 01.07.93 CHD & APPD : T.K

REV 02 02.05.91 CHD & APPD : G.R

REV 01 23.03.87 CHD & APPD : T.K

NOTE NO. 3 & 5 ALTERED COVERED TO AUTOCAD DWG.

EMBLEM LOCATION ALTERED IN THE DWG.

NOTE NO. 14 ADDED VARIANT NO. 14 ADDED LETTERS REFERENCE NO. MM/MPL BPS:07/64 DATED 18.06.93

NOTE NO. 6 ADDED.

DATE ALTERED : GULSHAN 05/22.04.16 CHD & APPD : N.K

DATE ALTERED : G.D.N 01/23.03.87 CHD & APPD : T.K

DESCRIPTION CHANGED

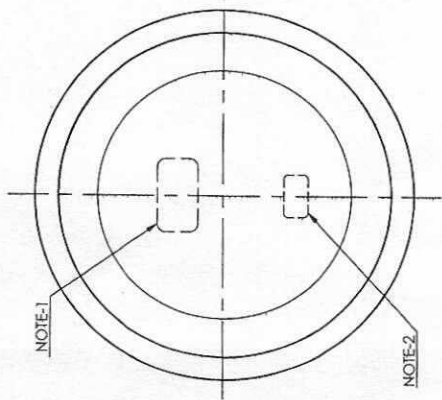
TITLE  
TUBE END COVER (EXTERNAL TYPE)

DRAWING NO : 6119-0122

REV 06

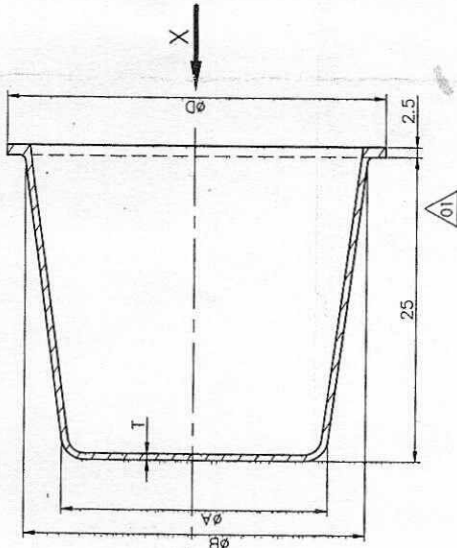
0210-6119

ON DWG/PC



NOTE-1

NOTE-2



NOTES:-

1. STAMP THE EMBLEM ACCORDING TO AA 040 11 21 IN THE DIRECTION 'X'.
2. STAMP THE APPROPRIATE NOM. SIZE IN THE DIRECTION 'X'.
3. MATERIAL: UREA FORMALDEHYDE CONFIRMING TO IS:3389 (OR) POLY VINYL CHLORIDE (PVC) (OR) HIGH DENSITY POLY ETHYLENE (HDPE).
4. THE TUBE END COVERS SHALL BE FLEXIBLE TO FIT SNUGLY IN TO THE TUBE AND WITHSTAND SHOCK DURING TRANSIT OF THE TUBES.
5. COLOUR: THE TUBE END COVERS SHALL BE OF WHITE IN COLOUR OF VIRGIN QUALITY MATERIAL.
6. THE CORNERS SHALL BE SUITABLY RADIUSED.
7. SPECIFICATION SHALL BE EMBOSSED ON INNER SURFACE OF THE END CAP AND NEAR TO SIZE OF THE CAPS AS FOLLOWS:  
FOR SPECIFICATION:  
i) UREA FORMALDEHYDE CONFIRMING TO IS:3389 ----- EMBOSSED AS "UF".  
ii) POLY VINYL CHLORIDE ----- EMBOSSED AS "PVC".  
iii) HIGH DENSITY POLY ETHYLENE ----- EMBOSSED AS "HDP".

FOR TOLERANCES OF UNTOLERANCED DIMENSIONS DURING MANUFACTURE REFER PLANT STD. NO TP 023 0299



EMBLEM SIZE	A	B	D	T	VARIANT NUMBER	ITEM NUMBER	DESCRIPTION	DRAWING NUMBER	ITEM NO	VAR NO	MATERIAL CODE	MATERIAL SPECN	UNIT WEIGHT	QUANTITY	REV
25	66	72	78	1.5	21		TUBE END COVER INT DIA 69	6119 0120 41			22 073 646		0.015		
25	63	69	75	1.5	20		TUBE END COVER INT DIA 66	6119 0120 40			22 074 476		0.014		
15	60	66	72	1.5	19		TUBE END COVER INT DIA 63	6119 0120 39			22 074 475		0.014		
15	57	63	69	1.5	18		TUBE END COVER INT DIA 60	6119 0120 38			22 074 474		0.013		
15	54	60	66	1.5	17		TUBE END COVER INT DIA 57	6119 0120 37			22 074 473		0.012		
15	51	57	63	1.5	16		TUBE END COVER INT DIA 54	6119 0120 36			22 074 472		0.012		
15	48	54	60	1.5	15		TUBE END COVER INT DIA 51	6119 0120 35			22 074 471		0.009		
15	45	51	57	1.5	14		TUBE END COVER INT DIA 48	6119 0120 34			22 074 470		0.008		
15	42	48	54	1.5	13		TUBE END COVER INT DIA 45	6119 0120 33			22 074 469		0.008		
-	39	45	51	1.5	12		TUBE END COVER INT DIA 42	6119 0120 32			22 074 468		0.007		
-	36	42	48	1.5	11		TUBE END COVER INT DIA 39	6119 0120 31			22 074 467		0.006		
-	33	39	45	1.5	10		TUBE END COVER INT DIA 36	6119 0120 30			22 074 466		0.006		
-	30	36	42	1.5	09		TUBE END COVER INT DIA 33	6119 0120 29			22 074 465		0.005		
-	27	33	39	1	08		TUBE END COVER INT DIA 30	6119 0120 28			22 074 464		0.004		
-	24	30	36	1	07		TUBE END COVER INT DIA 27	6119 0120 27			22 074 463		0.004		
-	21	27	33	1	06		TUBE END COVER INT DIA 24	6119 0120 26			22 074 462		0.004		
-	18	24	30	1	05		TUBE END COVER INT DIA 21	6119 0120 25			22 074 461		0.003		
-	15	21	27	1	04		TUBE END COVER INT DIA 18	6119 0120 24			22 074 460		0.002		
-	12	18	24	1	03		TUBE END COVER INT DIA 15	6119 0120 23			22 074 459		0.001		
-	9	15	21	1	02		TUBE END COVER INT DIA 12	6119 0120 22			22 074 458		0.001		
-	6	12	18	1	01		TUBE END COVER INT DIA 9	6119 0120 21			22 074 457		0.001		

TYPE OF PRODUCT OR NAME OF CUSTOMER/PROJECT

Bharat Heavy Electricals Ltd  
UNIT: HIGH PRESSURE BOILER PLANT  
TIRUCHIRAPALLI - 620014

PRODUCTION SCALE  
SCALE: 1:1

WEIGHT (Kg) REFER UNIT WT.  
BPS 517601

DATE: 01.09.1982  
SIGNATURE: -SC-  
G.D.N: TK  
CHK: S.K.  
APPD: S.K.  
REF TO ASBY / OLD DWG: -SC-  
01.09.1982

REVISIONS

REV	DATE	ALTERED	G.D.N
03	26.04.16	CHD & APPD	T.K
02	01.07.93	CHD & APPD	T.K

EMBLEM SIZE 15 WAS 25  
WIDTH SIZES REINTRODUCED.

NOTE NO. 3 & 5 ALTERED  
NOTE NO. 7 ADDED.  
CONVERTED TO AUTOCAD DWG.

CAUTION: The information on this document is the property of BHARAT HEAVY ELECTRICALS LTD. It must not be used directly or indirectly in any form for the supply of any goods or services for the company.

TITLE: TUBE END COVER (INTERNAL TYPE)

DRAWING NO: 6119-0120

REV: 03



## Annexure A

### QUOTATIONS:

1.
    - a. Interested bidders / Suppliers shall submit their offer through e-Procurement mode at <https://bheleps.buyjunction.in>. Offers in any other mode will not be accepted.
- For Enterprise Procurement System (EPS) Bidders/Suppliers are requested to follow these steps.

### REQUIREMENTS

1. A PC with Internet connectivity.
2. DSC (Digital Signature Certificate) (Class 3- SHA2- 2048 BIT- SIGNING & ENCRYPTION)
3. The site is best viewed in Internet Explorer 9.0. If you are using Internet Explorer 10 or above then enable compatibility view available under Tools menu
4. Install Java 1.8 Update 67/72/79/77 ( 32 OR 64 Bit )

### MANDATORY REQUIREMENT:

Suppliers interested for registration for BHEL Open Tenders should have a valid DSC (Digital Signature Certificate) before Proceeding forward for Registration. Herein a Valid DSC refers to an Active and unexpired Signing and Encryption Certificate, with specification Class III SHA 2 2048 bit.

### UNREGISTERED SUPPLIER IN EPS:

Procedure for Online Registration in EPS for Open Tender Suppliers for BHEL

#### **Please follow the below steps for registration**

1. Click Register Button (Top of the Screen)
2. Please input your organization PAN No (in case of Indian supplier) or click "Foreign" in case you are an overseas Supplier.
3. Click on INTERESTED Button against the respective BHEL Unit
4. Key in your desired login id (Login Code should be 8 - 24 characters in length and can only use numeric values) If you have registered by keying in PAN No. then your desired login id will be prefixed by "OTI", In case of overseas suppliers it will be prefixed with "OTF"
5. Fill in the other details.
6. Fill in the Captcha code and click next
7. Register your Signing certificate and click next
8. Select atleast one procurement category you may be dealing in.

Once the above steps are completed, your profile will be activated by mjunction within 2 business hours. After registering follow the steps provided in "For Registered Supplier" to view RFQ.

In case of any assistance, please call the following nos for support:

**033-6601 1717 (From 9:30am to 5:30pm)**

NB:-

1 -- BHEL Administrator or user will have no role for approving Registration and Open Tenders and DSC for Any supplier who has registered himself from the front END which is in case of OT.

### **FOR REGISTERED SUPPLIER IN EPS:**

- a. Supplier visits EPS home page
- b. Supplier signs in with their user id and password
- c. Selects the RFQ Code and views it.
- d. Attaches themselves to the RFQ by clicking the interested button
- e. Supplier fills the bid template and makes necessary attachments
- f. Supplier submits their bid by clicking CONFIRM.

In case of any assistance, please call the following Nos for support:

**033-6601 1717 (From 9:30am to 5:30pm)**

b. Bidders are requested to quote their offer price on F.O.R Destination (BHEL/Stores) basis only (The basic price of the material quoted in the bid should be inclusive of Packing, Forwarding, freight and transit insurance, etc.). Ex-works offers will be summarily rejected without further clarification.

c. No charges shall be indicated as "Lumpsum" or "Approximate" in absolute value. All charges like taxes and duties should be clearly specified as "percentage" of the quoted rates.

d. If any sales tax is payable as extra to the quoted price should be specifically stated in quotations along with CST & TIN no failing which the purchaser will not be liable for payment of sales tax. Our TIN No. 33243560005 Dated. 01.01.2007, CST No.239383 Dtd.11.06.1991.

e. Manufacturer's name, trademark or patent no. if any should be specified. Illustrative leaflets giving technical particulars are required along with quotation wherever necessary.

f. Products with I.S.I. certification marks will be preferred.

g. The Purchaser shall be under no obligation to accept the lowest or any other tender and shall be entitled to accept in Part or full without assigning any reason whatsoever.

h. The bidder has to keep track of any changes by viewing the addendum / Corrigendum's issued by the Purchaser on time-to- time basis in the E-Procurement platform. The Company calling for tenders shall not be responsible for any claims/problems arising out of this.

i. The user should complete all the processes and steps required for bid submission. The successful bid submission can be ascertained once acknowledgement is given by the system through bid submission number after completing all the processes and steps. BHEL and mjunction Services Ltd. will not be responsible for incomplete bid submission by users. Users may also note that the incomplete bids will not be saved by the system and are not available for the Purchaser for processing.

j. Before uploading scanned documents if any, the bidders shall sign on all the statements, documents, certificates uploaded by him, owning responsibility for their correctness / authenticity.

2. Offers should have a validity of minimum 90 days from the date of technical bid opening. The quoted/Finalized rates shall be Firm till completion of the supplies including amendment / deviation / extension if any in quantity / date.

3. On the due date of tender opening, only technical bids will be opened. The opened technical bids will be evaluated by us and clarifications required, if any, will be called for from the bidders on technical and commercial points. If no reply is received from the vendor for the clarification raised by BHEL with in the final cut-off date those vendors offer will be processed with the documents available / submitted against this tender. Offers not meeting the required specification and technical condition will be summarily rejected. The price bids of technically suitable bidders will be opened on a later date with prior intimation to techno-commercially suitable bidders.

4. Ranking L-1, L-2 etc. shall be done for individual items for the techno-commercially acceptable offers on landed cost to BHEL, Trichy basis and BHEL reserves the right to place order for individual items with different vendors. In the event of more than one vendor becoming L1 for the item, the enquiry quantity will be shared equally among all the L1 vendors.

5. BHEL reserves the right to negotiate with L1 vendor or re-float the tender for items where, L1 price is not the lowest acceptable price; BHEL reserves the right to increase or decrease the tender quantity.

6. **TERMS OF PAYMENT:** Payment will be made after 45 days from the date of receipt and acceptance of materials at BHEL Trichy. Offers quoting for Advance payment / LC / thro bank payment will be rejected. Any deviation in the payment terms below 45 days shall attract loading as below.

Base rate of SBI (as applicable on the date of bid opening; Techno-commercial bid opening in case of two part bids) +6% will be considered for the loading for the period of relaxation sought by the bidder.

7. LD clause & Risk purchase clause are applicable.

(Any deviations in the LD shall attract loading to the extent of relaxation sought to which it is not agreed by the bidder at offered value).

**Single delivery schedule:**

If the Supplier fails to deliver the P.O quantity within the period specified in the contract, then the Purchaser shall deduct liquidated damages, 0.5% of the total order value per week of delay or part thereof subject to a maximum of 10% of the total order value.

**Staggered delivery schedule**

In case of staggered delivery schedule, if the Supplier fails to deliver the quantity of any line item of the P.O within the period specified in that line item, Purchaser shall deduct Liquidated Damages, 0.5% of the undelivered portion per week delay or part thereof subject to maximum of 10% of the total order value

**Liquidated Damages (LD): (Any deviations shall attract loading to the extent of relaxation sought to which it is not agreed by the bidder at offered value).**

**RISK PURCHASE:** Alternatively the purchaser at his option will be entitled to terminate the contract and to purchase elsewhere at the risk and cost of the seller either the whole of the goods or any part which the supplier has failed to deliver or dispatch within the time stipulated as aforesaid or if the same were not available, the best and the nearest available substitutes therefor. The supplier shall be liable for any loss, which the purchaser may sustain by reason of such risk purchases in addition to penalty at the rate mentioned in LD clause above.

**8. CENVAT CREDIT:** If any Excise Duty is payable, the Chapter Head / Sub -head reference and the rate of the duty should be quoted. If the tenderer is availing CENVAT credit for this input material, the effect of Proforma credit should be passed on to the purchaser. Tenderer under "CENVAT" shall be preferred. In case of ordering vendor should issue CENVAT invoice along with the material.

**9. PACKING AND MARKING:** The supplier shall arrange for securely protecting and packing the stores to avoid loss or damages during transit.

**10. SPECIAL PROVISIONS FOR MICRO AND SMALL ENTERPRISES (MSE) BIDDERS:**

i. 20% of the tendered quantity is earmarked for MSE suppliers in this tender.

ii. Out of the 20% tendered quantity reserved for MSE suppliers, 4% shall be earmarked for procurement from MSE owned by SC / ST entrepreneurs. In event of failure of such Micro and Small enterprises to participate in the tender process or meet the tender requirements and the L1 price, the 4% sub-target for procurement ear-marked MSE owned by SC / ST entrepreneurs shall be met with other MSE enterprise/s.

iii. In case MSE vendor participating in the tender quotes within the price band of L1 + 15%, they will be allowed to supply the portion of the requirement subject to acceptance of L1 price by MSE vendor. In case of more than one such MSE, the supply shall be shared equally.

iv. MSE suppliers can avail the intended benefits only if they submit along with the offer, attested copies of either EM II certificate having deemed validity (five years from the date of issue in acknowledgement in EM II) or valid NSIC certificate or

EM II certificate along with attested copy of a CA certificate (Format enclosed as per Annexure I where deemed validity of EM II certificate of five years have expired) applicable for the relevant financial year (latest audited). Date to be reckoned for determining the deemed validity will be the date of bid opening (Part 1 in case of two part bid). Non submission of such documents will lead to consideration of their bids at par with other bidders. No benefits shall be applicable for the enquiry if any deficiency in the above required documents is not submitted before the price bid opening. If the tender is to be submitted through e-procurement portal, then the above required documents are to be uploaded on the portal. Documents should be notarized or attested by a Gazetted officer. This provision for MSE will apply subject to the condition that the participating MSE meets the tender requirements.

v. In case of any change in the MSE status of the bidder, it shall be the responsibility of the bidder to notify the change as a part of the bid document. If at a later date it comes to the knowledge of BHEL, that the change in the status has not been intimated by the bidder and the order is obtained under the premise of an MSE then BHEL would cancel the pending order against this tender and take necessary steps for suspension of the business dealing with the bidder as per the procurement policy of BHEL.

vi. In case after the bid opening it is seen that no MSE has become L1, then depending on the nature of the item, if it is not possible to split the tendered items / quantities on account of reasons like customer contract requirements of supplying one make for a given project or technical reasons like tendered items being a system, tendered quantity being low etc., then BHEL would not counter offer the L1 prices even though there may be MSE bidders within the +15% band of L1.

#### 10.1

a. 20% of the tendered quantity is earmarked for MSE suppliers in this tender. The earmarked 20% quantity will be counter offered to the MSE vendors whose rate is within L1+15% band & up to H1 of MSE. In case of non-acceptance of the counter offering of 20% reservation to MSE vendors, the total tender quantity will be ordered as mentioned in 10.1 (c). For the balance 80% of the tendered quantity, BHEL reserves the right to order the tender quantity 100% on L1 vendor. Counter offering of L1 rate will not be made with any H1 vendor of Non-MSE

b. If L1 is from a Micro / Small enterprise, the 20% earmarking provision is not applicable.

c. If there is no response from MSE vendors the above split up of 10.1 (a) & 10.1 (b) will not be applicable and the total tender quantity will be share among L1 vendors.

d. In case of counter offering rate does not accepted by the L2 as well as L3 vendor, such counter offer quantity also will be ordered on L1 vendor.

11. Conditional offers are likely to be rejected.

12. The correspondences between the bidder and BHEL through email are considered as valid document legally though not signed. It is treated as valid confirmations made on behalf of the respective company and comes under the legal ambit of the business transaction and hence binding on both the parties.

13. Disclaimer Clause: Neither the Organization (Bharat Heavy Electricals Ltd.) nor the service provider (mjunction Services Ltd.) is responsible for any failure of submission of bids due to failure of internet or other connectivity problems or reasons thereof.

14. Bidders participating in the tender should declare in their technical bid whether they have been black-listed / kept on hold / given Business holiday for a specified period by any Public Sector Undertaking or Government Departments. The reasons for such action with details and

the current status of such hold shall be clearly furnished to BHEL. If no such details are mentioned in the offer, it will be construed that the bidder is not under any such hold. However, at a later date if it comes to the notice of BHEL about any such hold under enforcement, BHEL reserves the right to reject the offer at any point of time and also under any stage of the finalization of the tender. Such bidders will not be permitted to participate in the further tender proceedings and will be communicated suitably.

**15.** BHEL reserves the right to negotiate or re-float the enquiry opened if L1 price is not the lowest acceptable price to them inter-alia other reasons.

**16.** The correspondence between the bidder and BHEL through email is considered as valid document legally though it is not signed. It is treated as valid confirmations made on behalf of the respective company and comes under the legal ambit of the business transaction and hence binding on both the parties.

**17.** In case of any quality rejection of materials, the supplier has to collect the materials at his own cost within the 10 days of rejection of advice. Otherwise the materials will be scrapped

**18.** Unloading at BHEL has to be done by the suppliers and BHEL will not be in a position to provide any handling / unloading facilities.

**20.** Bidders not confirming to the enquiry specifications will be disqualified

ANNEXURE -B			
KINDLY SPECIFY ALL ENQ SL NOS AS PER BHEL ENQUIRY. (SUBMITTED IN COVER NO: 1)			
ENQ SL NO	BHEL SPECIFICATIONS	YOUR SPECIFICATION	WHETHER QUOTED/ NOT QUOTED
10			
COMMERCIAL TERMS CONFIRMATION REQUIRED FROM THE SUPPLIERS (SUBMITTED IN COVER NO: 1)			
SL NO	DESCRIPTION	BHEL REQUIREMENTS	SUPPLIER CONFIRMATION
1	VALIDITY	90 Days from Date of Technical bid opening	Should be accepted by Vendor
2	DELIVERY REQUIREMENTS	FOR-DESTINATION BHEL STORES TRICHY -620014	Should be accepted by Vendor
3	PACKING & FORWARDING (Whether inclusive or extra) Clearly mention the percentage or amount.	SUPPLIER OPTION	INCLUDED / EXTRA INCASE OF EXTRA MENTION THE PERCENTAGE _____ OR AMONT _____
4	EXCISE DUTY WITH CESS	SUPPLIER OPTION	INCLUDED / EXTRA INCASE OF EXTRA MENTION THE PERCENTAGE _____
5	VAT / CST clearly mention the percentage.	SUPPLIER OPTION	INCLUDED / EXTRA INCASE OF EXTRA MENTION THE PERCENTAGE _____
6	FREIGHT (Whether inclusive or extra) Clearly mention the percentage or amount.	SUPPLIER OPTION	INCLUDED / EXTRA INCASE OF EXTRA MENTION THE PERCENTAGE _____ OR AMONT _____
7	SERVICE TAX IF ANY FOR FREIGHT ELEMENT ONLY	SUPPLIER TO QUOTE	NOT APPLICABLE/INCLUDED / EXTRA INCASE OF EXTRA MENTION THE PERCENTAGE _____
8	Service Tax if any for Erection and commissioning	SUPPLIER TO QUOTE	NOT APPLICABLE/INCLUDED / EXTRA INCASE OF EXTRA MENTION THE PERCENTAGE _____
9	DEIVERY SCHEDULE	AS PER TENDER SCHEDULE	
10	PAYMENT TERMS	As per Clause 06 of Terms and Conditions of the Enquiry (Two Part Bid)	
11	LD CLAUSE	As per Clause 07 of Terms and Conditions of the Enquiry (Two Part Bid)	
12	CONTACT PERSON DETAILS	NAME:	
		MOBILE NO:	
		EMAIL :	
13	MSE STATUS	Should attach the documents called for in enquiry Terms & Conditions	
14	GUARANTEE / WARRANTY	REQUIRED/ NOT REQUIRED	
15	TEST CERTIFICATE	REQUIRED/ NOT REQUIRED	
16	SAMPLE	REQUIRED/ NOT REQUIRED	

Vendors Seal &  
Signature



**Certificate by Chartered Accountant on letter head**

This is to Certify that M/S .....  
(hereinafter referred to as 'company') having its registered office at .....  
is registered under MSMED Act 2006, (Entrepreneur  
Memorandum No (Part-II) ..... dtd:.....  
Category: ..... (Micro/Small)). (Copy enclosed).

Further verified from the Books of Accounts that the investment of the company as per the latest audited financial year ..... as per MSMED Act 2006 is as follows:

1. **For Manufacturing Enterprises:** Investment in plant and machinery (i.e. original cost excluding land and building and the items specified by the Ministry of Small Scale Industries vide its notification No.S.O.1722(E) dated October 5, 2006 :  
Rs.....Lacs
2. **For Service Enterprises:** Investment in equipment (original cost excluding land and building and furniture, fittings and other items not directly related to the service rendered or as may be notified under the MSMED Act, 2006:  
Rs.....Lacs

**(Strike off whichever is not applicable)**

The above investment of Rs.....Lacs is within permissible limit of Rs.....Lacs for .....Micro / Small (Strike off which is not applicable) Category under MSMED Act 2006.

Or

The company has been graduated from its original category (Micro/ Small) (Strike off which is not applicable) and the date of graduation of such enterprise from its original category is ..... (dd/mm/yyyy) which is within the period of 3 years from the date of graduation of such enterprise from its original category as notified vide S.O. No. 3322(E) dated 01.11.2013 published in the gazette notification dated 04.11.2013 by Ministry of MSME.

Date:



(Signature)

Name -

Membership number -

Seal of Chartered Accountant