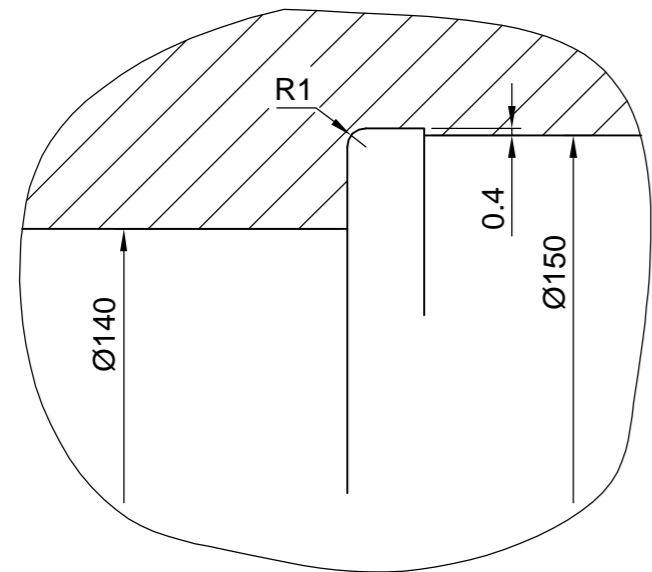
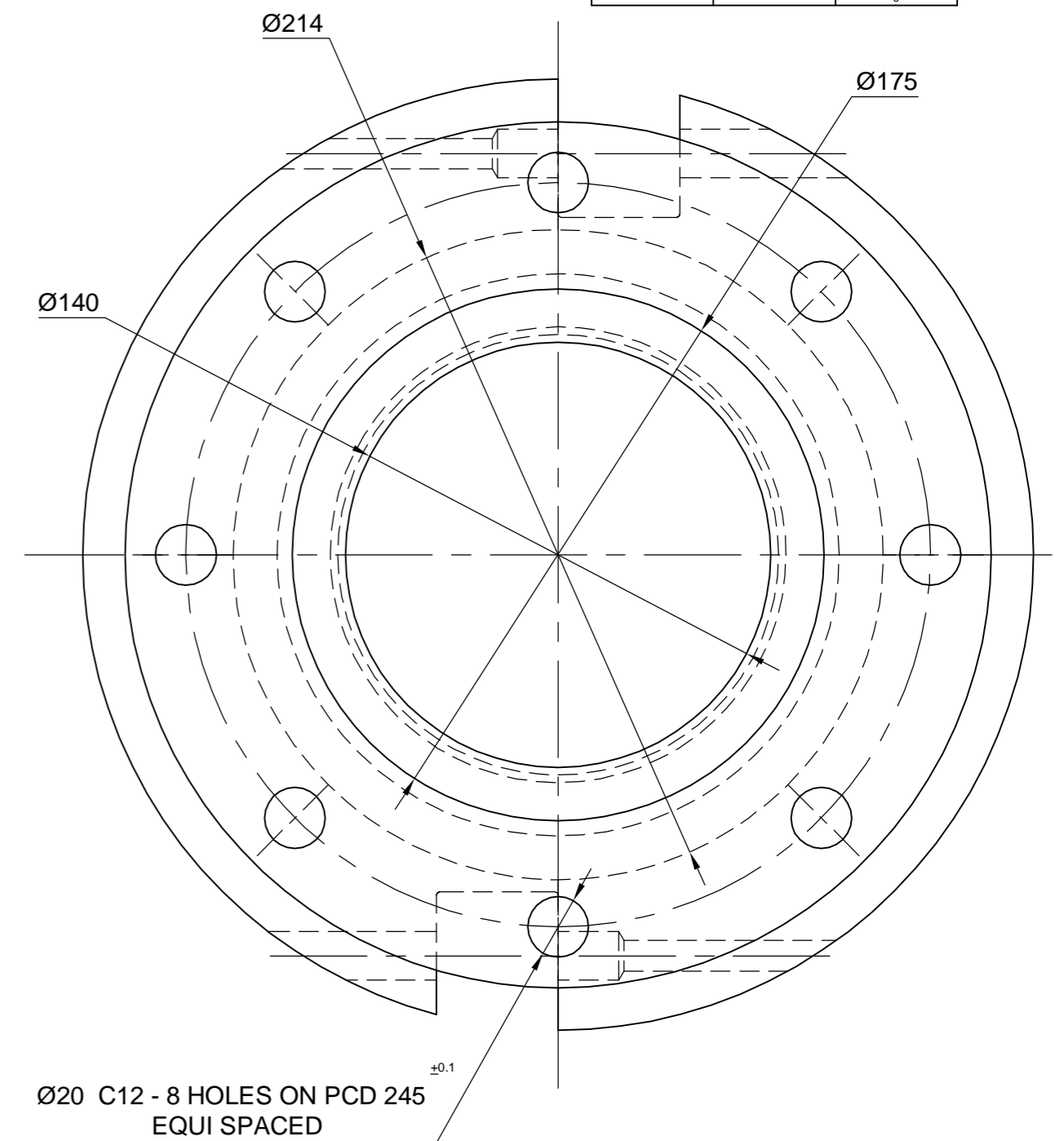
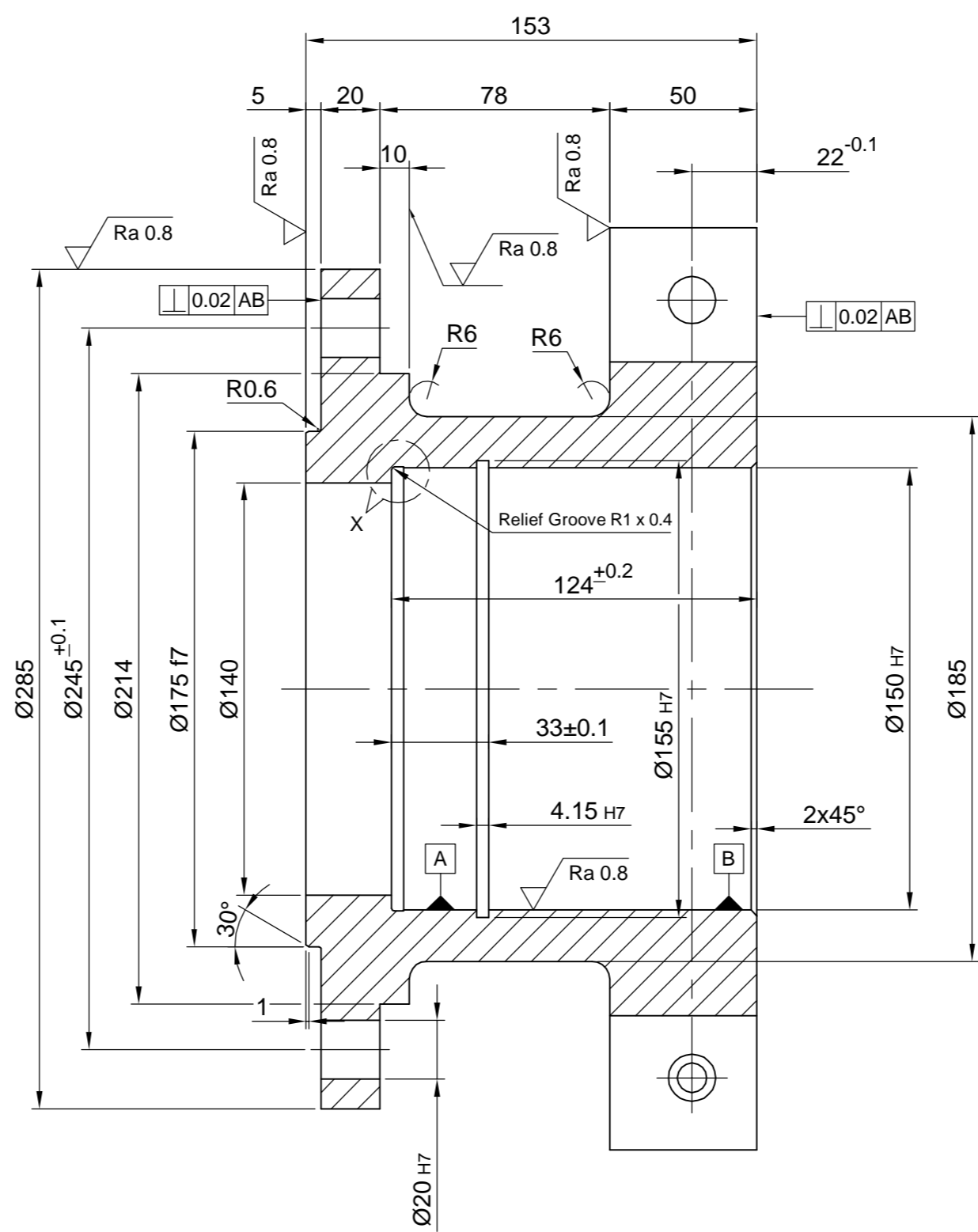
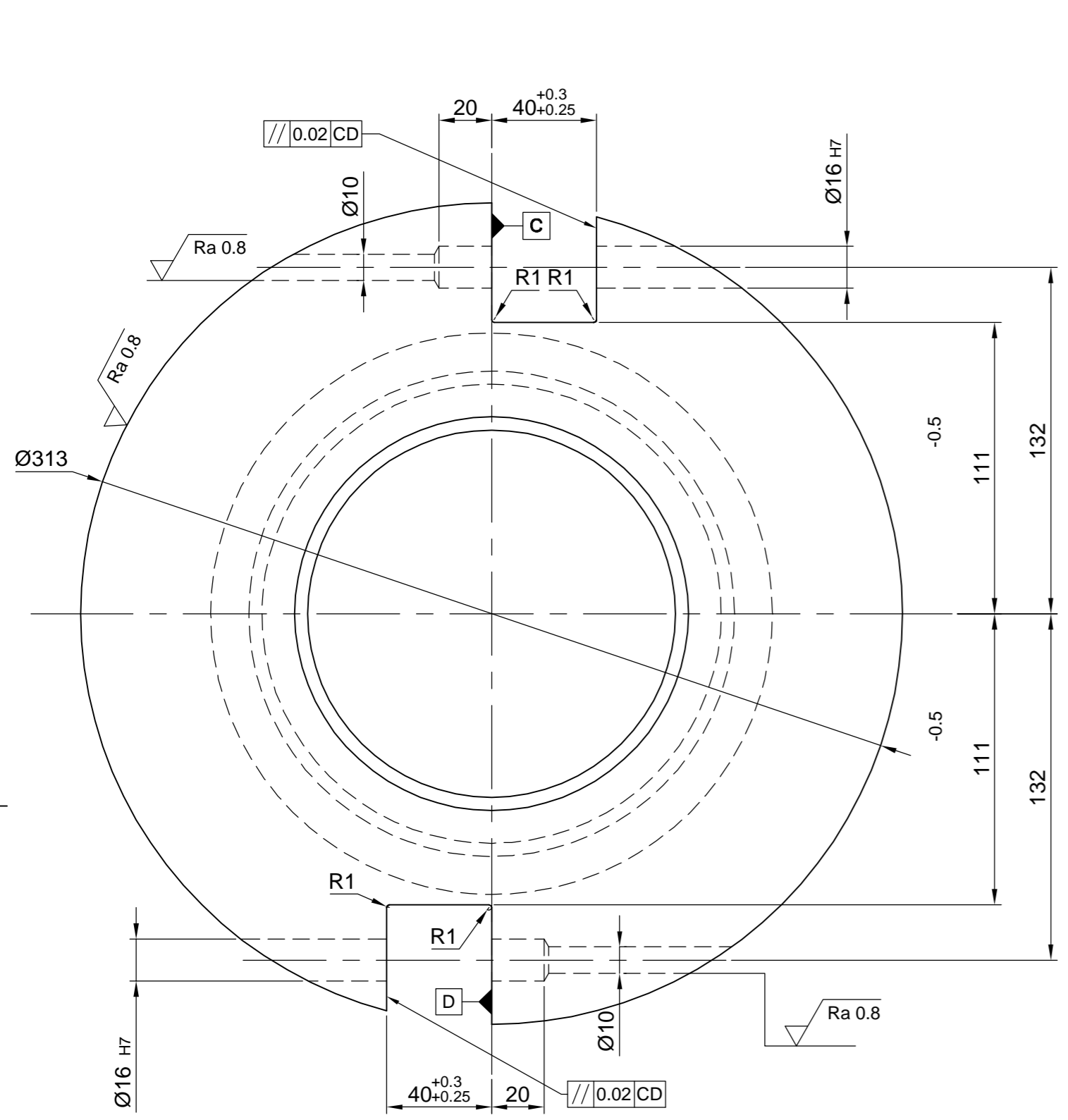


✓ (✓ Ra 0.8)

Nominal Size	Tolerance Filed	Deviation
Ø175	F7	-0.043
		-0.083
Ø155	H13	+0.63
		0
Ø150	H7	+0.04
		0
Ø20	C12	+0.32
		+0.11
Ø16	H7	+0.018
		0
4.5	H13	+0.18
		0



NOTE: 1. All SHARP CORNERS CHAMFERED TO 0.6x45°
 * Manufacturing Instructions
 SN 200
 * Bath nitrided

REV	DATE	ALTERED	CHECKED	APPROVED	REV	DATE	ALTERED	CHECKED	APPROVED
02	14.09.13	S. Raghav	R. Raghav	S. Loganathan	01	10.03.12	S. KIRUBAHARAN	SSN.KUMAR	G.LOGANATHAN

CAUTION: THE INFORMATION ON THIS DOCUMENT IS THE PROPERTY OF BHARAT HEAVY ELECTRICALS LIMITED. IT MUST NOT BE USED DIRECTLY OR INDIRECTLY IN ANY WAY DETRIMENTAL TO THE INTEREST OF THE COMPANY.	ITEM NO	DESCRIPTION	DRAWING NO	42Cr4Mo2 IS: 5517	MATL CODE	UNIT WT	
					MATL SPEC	QTY	
	EQPT: STRETCH REDUCING MILL						
DEPT SSTP CODE 456	GRADE OF UNTOL. DIM Ø/M/F IS: 2102	SCALE 1:2	WEIGHT (Kg) 35.0	Bharat Heavy Electricals Ltd SEAMLESS STEEL TUBE PLANT TIRUCHIRAPALLI - 620014			
				DRN	NAME	SIGNATURE	DATE
				CHD	SSN.KUMAR	S.N. Kumar	05.02.11
TITLE SRM - COUPLING HALF-2 FOR IN PUT DRIVE ASSY - EVEN No STAND-SRM300				APPD	G.LOGANATHAN	S. Loganathan	05.02.11
REF TO ASSY DWG NO 1-7-1155-07-10086				ITEM 39			
REF TO OLD DWG NO 0107120-33.011				DRAWING NO : 2-7-1155-07-10017			
				REV 02			