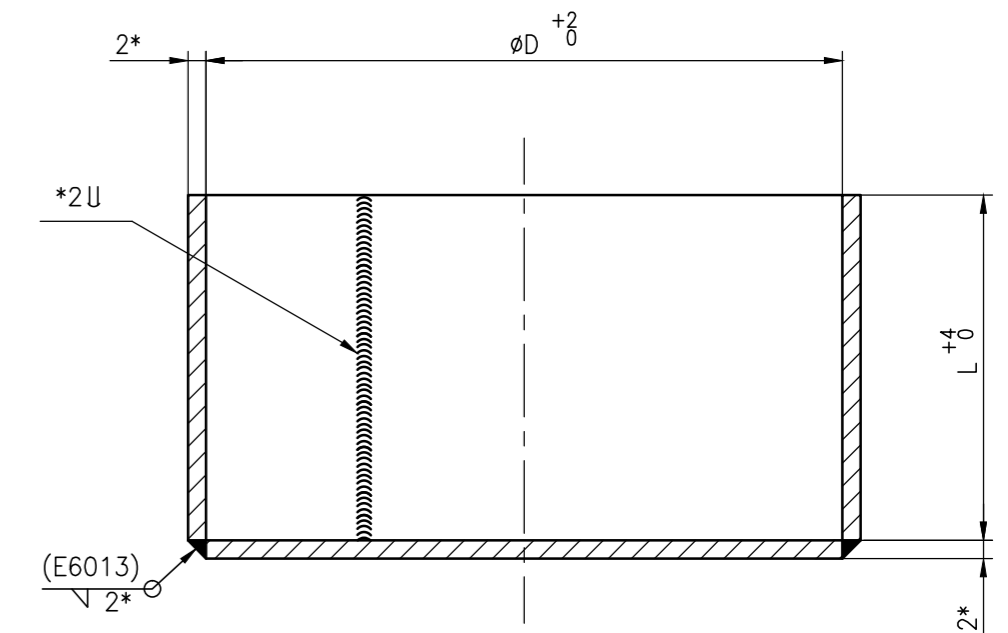


2-V-0000-15483/18
DRAWING ON

ALL DIMENSIONS ARE IN MILLIMETRES. FOR TOLERANCES OF UNTOLERANCED DIMENSIONS DURING MANUFACTURE REFER RELEVANT QCP / QP

SL.No.	DRAWING No.	MATL. CODE	ØD ⁺² ₀	L ⁺⁴ ₀	NET WT (Kg)	APPLICABLE VALVE SIZES
01	2-V-G041-15483/2	964530010000	92.5	30	0.24	65/1500 GL,RE
02	2-V-W049-15483/2	964530020000	98.5	30	0.27	65/1500 WG
03	2-V-W001-15483/2	964530030000	102.5	30	0.28	65/2500 WG,GL,RE,65/1500 NR
04	2-V-G004-15483/2	964530040000	106.5	40	0.35	65/3500 GL,80/1500 GL,RE
05	2-V-L161-15483/2	964530050000	112.5	40	0.38	80/1500 NR,65/2500 NR
06	2-V-G145-15483/2	964530060000	117.5	40	0.40	80/2500/ GL,80/1500 WG
07	2-V-W345-15483/2	964530070000	122.5	50	0.49	65/3500 RE,80/2500 WG
08	2-V-L025-15483/2	964530080000	127.5	40	0.45	80/3500 RE,80/2500 NR
09	2-V-G001-15483/2	964530090000	137.5	50	0.57	100/1500 RE,GL,WG,100/2500 RE,GL
10	2-V-L053-15483/2	964530100000	142.5	40	0.53	100/1500 NR
11	2-V-W369-15483/2	964530110000	147.5	40	0.56	80/3500 WG
12	2-V-W002-15483/2	964530120000	152.5	50	0.66	100/2500 WG,NR
13	2-V-W353-15483/2	964530130000	158	75	0.69	125/2500 WG
14	2-V-W441-15483/2	964530140000	163	50	0.73	125/1500 WG,RE
15	2-V-W065-15483/2	964530150000	188	75	1.13	150/2500 WG,NR
16	2-V-W057-15483/2	964530160000	193	75	1.17	150/1500 WG,NR
17	2-V-G002-15483/2	964530170000	205	75	1.28	150/2500 RE,GL
18	2-V-W113-15483/2	964530180000	238	75	1.58	200/1500 WG,NR
19	2-V-L002-15483/2	964530190000	243	100	1.93	200/2500 NR
20	2-V-W003-15483/2	964530200000	248	100	1.98	200/2500 WG
21	2-V-L177-15483/2	964530210000	287.5	100	2.43	250/2500 NR,WG,250/1500 WG
22	2-V-L129-15483/2	964530220000	293	100	2.50	250/1500 NR
23	2-V-W061-15483/2	964530230000	340	100	3.10	300/1500 WG,NR
24	2-V-W005-15483/2	964530240000	354.5	100	3.29	300/2500 WG,NR
25	2-V-W117-15483/2	964530250000	383	100	3.69	350/1500 WG
26	2-V-L121-15483/2	964530260000	393	100	3.84	350/1500 NR
27	2-V-W465-15483/2	964530270000	403	100	3.99	350/2000 WG
28	2-V-L029-15483/2	964530280000	418.5	100	4.22	300/2000 ELB,350/2500 NR
29	2-V-W006-15483/2	964530290000	423	150	5.33	350/2500 WG
30	2-V-L081-15483/2	964530300000	443	150	5.70	350/2500 SCH
31	2-V-L113-15483/2	964530310000	448	100	4.68	300/2000 ELB,350/2750 WG
32	2-V-W069-15483/2	964530320000	473	150	6.25	400/2500 WG
33	2-V-G137-15483/2	964530330000	482	150	6.43	400/2500 RE,18"/150C GV
34	2-V-W457-15483/2	964530340000	503	100	5.60	450/1500 WG
35	2-V-W073-15483/2	964530350000	533	175	8.10	450/2500 WG

SL.No.	DRAWING No.	MATL. CODE	ØD ⁺² ₀	L ⁺⁴ ₀	NET WT (Kg)	APPLICABLE VALVE SIZES
36	2-V-W515-15483/2	964530360000	558	175	8.65	450/2000 WG
37	2-V-W417-15483/2	964530370000	613	150	9.17	600/1500 WG
38	2-V-W077-15483/1	964531150000	563	175	8.77	500/2750 WG
39	2-V-W505-15483	964531160000	197	75	1.21	150/2750 WG
40	2-V-L033-15483/2	964531740000	519	200	8.33	450/2500 SCH
41	2-V-L169-15483/1	964531750000	463	150	6.09	400/2500 SCH
42	2-V-W393-15483/1	964531760000	458	100	4.86	400/1500 WG
43	2-V-L089-15483/1	964531770000	168	80	1.02	125/1500 & 125/2500 SCH
44	2-V-W752-15483/1	964533550000	593	175	9.20	500/2850 SPL WG
45	2-V-W021-15483/1	964533590000	325	100	2.94	300/2500 WG (FOR P91)
46	2-V-K616-15483/3	964650090000	638	100	9.2	24"/150C GV
47	2-V-N589-15483/3	964650110000	372	100	3.4	14"/150C GV
48	2-V-N370-15483/3	964650100000	532	100	6.4	20"/150C GV
49	2-V-N594-15483/3	964650120000	440	100	4.4	16"/300C GV
50	2-V-3204-15483/1	964651370000	790	70	10.5	700MM/1500 RHID
51	2-V-P366-15483/1	964652090000	311	40	1.8	10"/C300-RV
52	2-V-WA81-15483/2	964660030000	685	200	12.6	550/3000 SPL GV
53	2-V-NG24-15483/1	964653650000	486	100	5.3	18/300-GV
54	2-V-3319-15483/1	964654100000	869	70	12.3	800/1500-RHID
55	2-V-P560-15483/1	964654140000	356	40	2.3	300/300-RV
56	2-V-3314-15483/1	964661000000	970	125	17.6	800/600-RHID
57	2-V-U482-15483/1	964661010000	882	110	14.6	700/1500-RHID



NOTE:

1. MATERIAL SPECIFICATION: IS 1079 Gr."O" CERTIFY.
2. *SHEET THICKNESS 1.6 ALSO ACCEPTABLE.

REV	DATE	ALTERED	P.NALLATHAMBI	REV	DATE	ALTERED	VB
18	16.03.13	CHD & APPD	S.S.K. & M.R.K	17	04.04.12	CHD & APPD	SSK & KRS

NOTE No.2 ADDED.
DCP: 801481

SL. Nos.56 & 57 INCLUDED

No OFF	DESCRIPTION	MATL CODE	MATL SPECN	HEAT TREATMENT	SCRAP SORT	NET WT (kg)	GROSS WT (kg)	DRAWING No	ITEM No
-	-	-	-	-	-	-	-	-	-

CAUTION: The information on this document is the property of BHARAT HEAVY ELECTRICALS LTD. It must not be used directly or indirectly in any way detrimental to the interest of the company.

TYPE OF PRODUCT OR NAME OF CUSTOMER/PROJECT		Bharat Heavy Electricals Ltd., UNIT: HIGH PRESSURE BOILER PLANT. TIRUCHIRAPALLI - 620014.		DRN	R.RAJKUMAR	SIGN	DATE	NO.OF VAR.
DEPT VL		SCALE	WEIGHT (KG).	CHD	R.L.NARAYANAN		08.06.99	
CODE 320		NTS	REF. TABLE	APPD	M.RAJAKUMAR		08.06.99	
TITLE		METALLIC END COVERS (FABRICATED)		REFERENCE INFORMATION		CAD REF: C214583		NO. OF ITEMS
CARD CODE		DRAWING NO.		REV		U 01		18