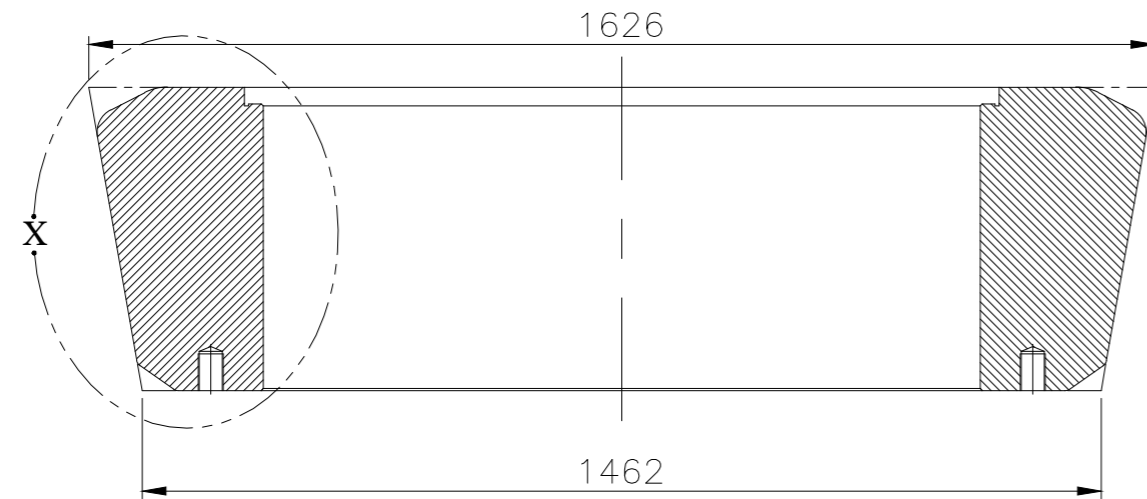
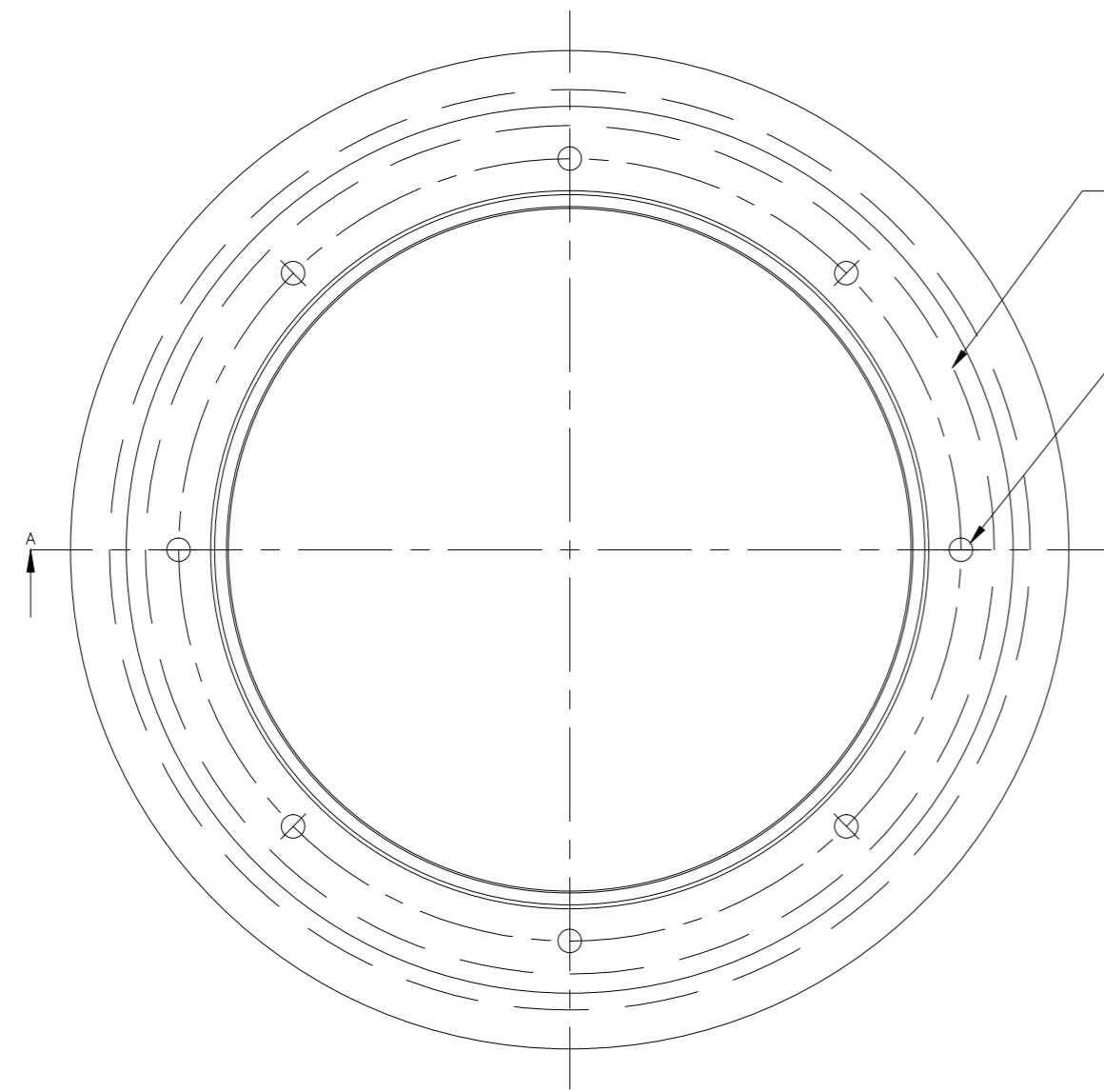


DRG. NO. 2-61-010-03169

THE INFORMATION ON THIS DOCUMENT IS THE PROPERTY OF BHARAT HEAVY ELECTRICALS LIMITED. IT MUST NOT BE USED DIRECTLY OR INDIRECTLY IN ANY WAY DETRIMENTAL TO THE INTEREST OF THE COMPANY
 COMPUTER FILE NAME
 SIGN. AND DATE
 REF. DRG. NO.
 INVENTORY NO.



SECTION: A-A

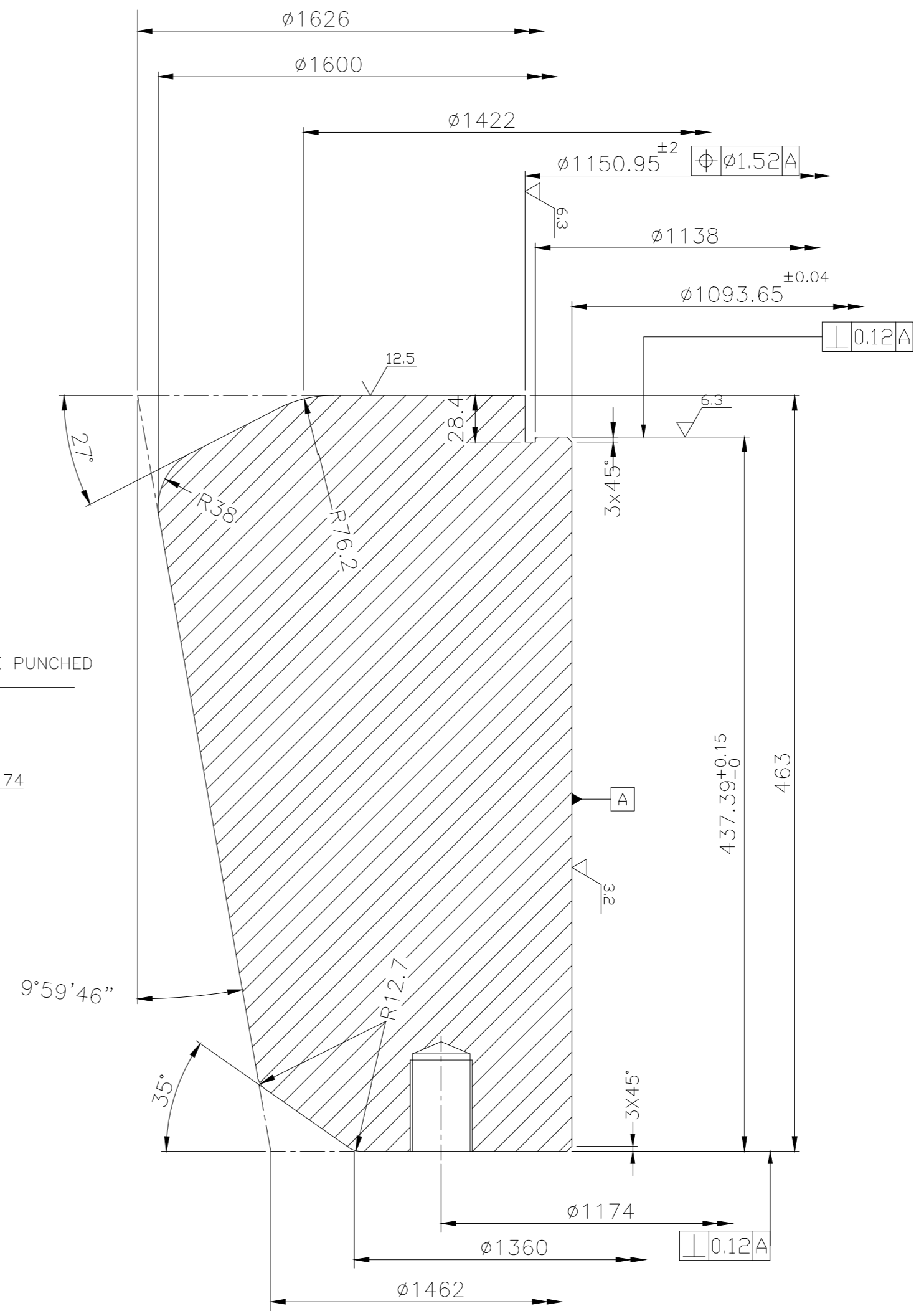


SCALE 1:4

AIAE ROLLER IDENTIFICATION NUMBER TO BE PUNCHED AT FINAL STAGE ON TOP & BOTTOM FACES

8 TAPPED HOLES EQUISPACED
 1.5"-6UNC X 63.5mm DEEP ON PCD 1174

$\varnothing 1.27$ S P139.7 BA M
 L 0.25 B



ENLARGED DETAIL: X

RAW MATERIAL WT/PC: 3374.0

THE FOLLOWING CONDITIONS APPLY EXCEPT OTHERWISE STATED.

- REF. TO HY0230261 FOR UNSPECIFIED TOLERANCES.
- CHAMFER M/CD. SHARP EDGES 1.2 TO 1.0 AT 45°.
- INTERNAL M/CD. CORNER RADII 1 TO 0.7
- THE SURFACE ROUGHNESS WHERE-EVER NOT SHOWN SHALL BE TAKEN FROM THE SURFACE ROUGHNESS SHOWN OUT SIDE THE BACK SLASH GIVEN OR THE TOP MOST RIGHT CORNER OF THE DRG.

TYPE OF PRODUCT HP 1023-1103- COAL MILL
 NAME OF CUSTOMER/PROJECT

BHARAT HEAVY ELECTRICALS LIMITED HYDERABAD	DRN.	NAME	SIGN.	DATE	NO.OF VAR.
	CHD.	BGK		10.03.12	
	APPD.	AMAN			

DEPT. PULV. ENGG. CODE 446	UNTOL. DIMS. GR. \varnothing /M/F	SCALE 1:5	WEIGHT (KG) 3155.0	REF. TO ASSY DRG.	ITEM NO.	NO.OF ITEMS
----------------------------	-------------------------------------	-----------	--------------------	-------------------	----------	-------------

TITLE GRINDING ROLL 63"			DRAWING NO. 2-61-010-03169		REV. 00
SHEET NO. 01		NO OF SHEETS 01			

REV.	DATE	ALTERED CHD.	APPD.	REV.	DATE	ALTERED CHD.	APPD.	REV.	DATE	ALTERED CHD.	APPD.