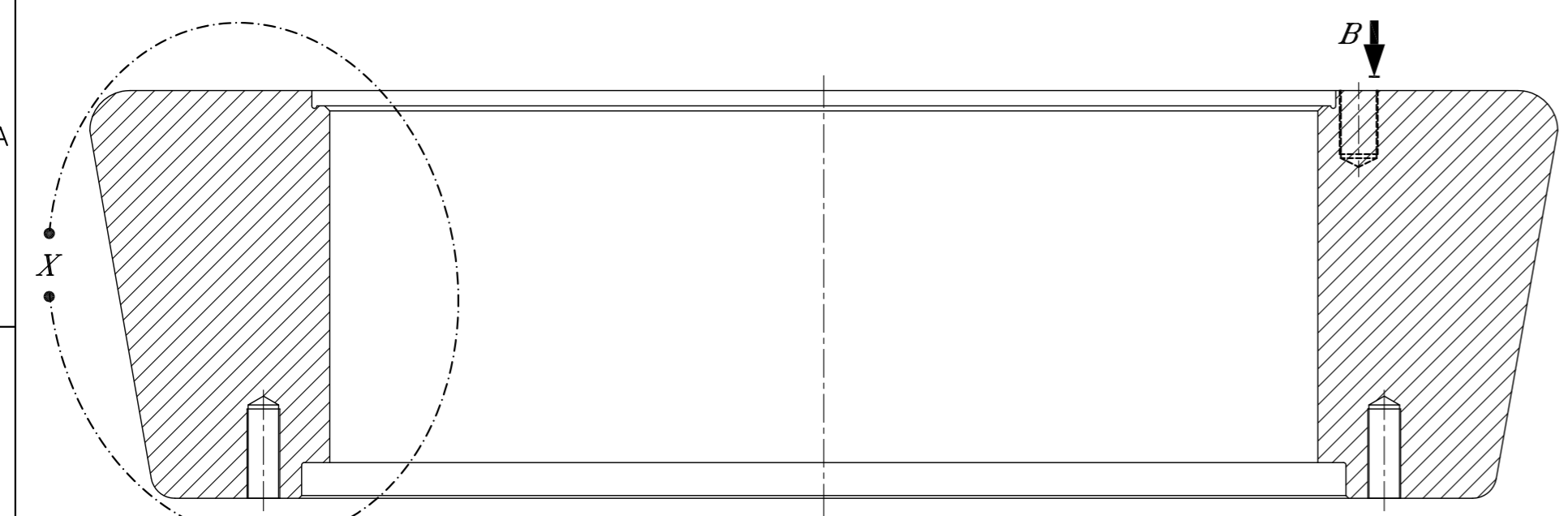
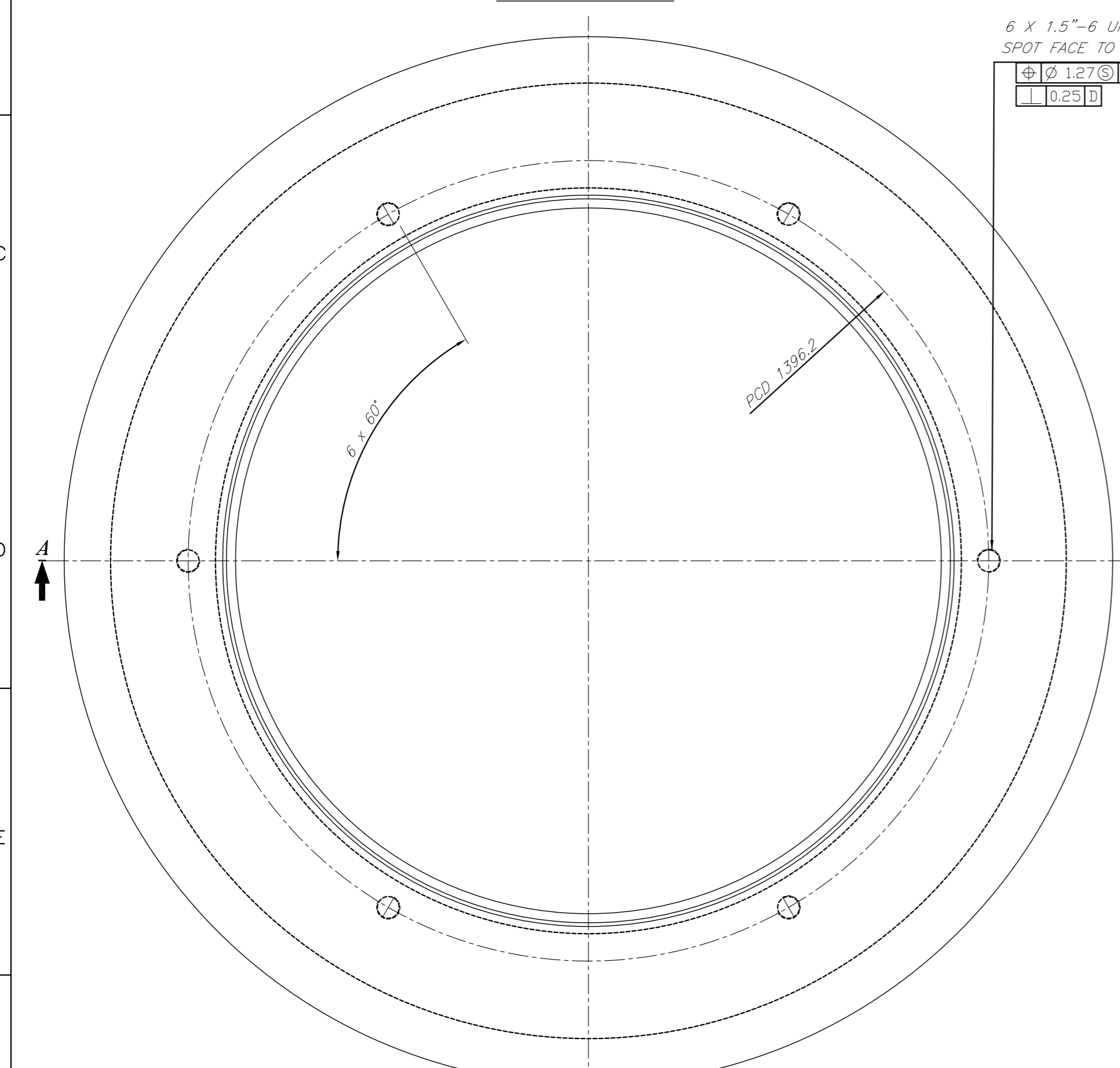


DRG. NO. 2-61-120-02903

THE INFORMATION ON THIS DOCUMENT IS THE PROPERTY OF BHARAT HEAVY ELECTRICALS LIMITED. IT MUST NOT BE USED DIRECTLY OR INDIRECTLY IN ANY WAY DETRIMENTAL TO THE INTEREST OF THE COMPANY.



SECTION: - A A



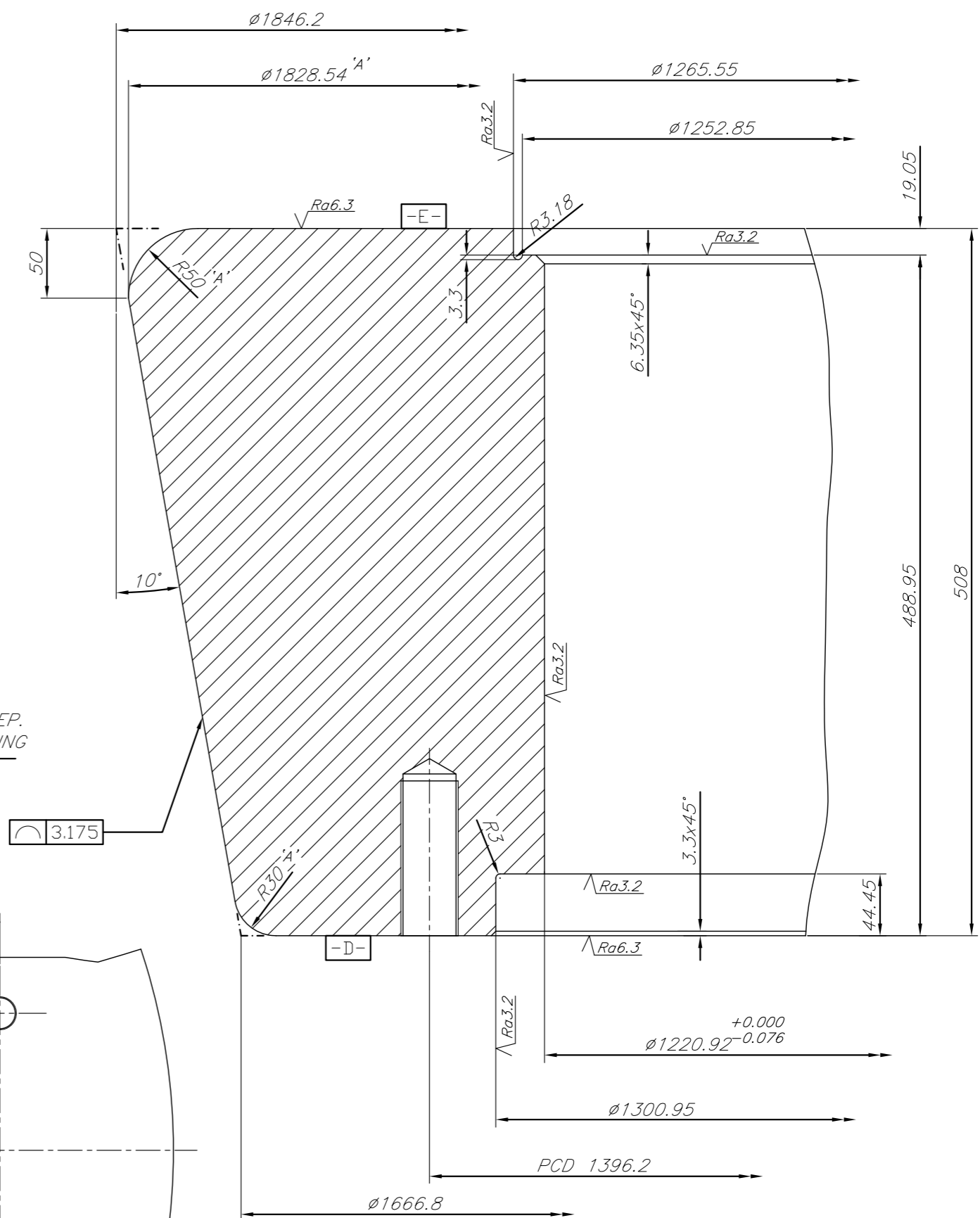
VIEW FROM: - B

6 X 1.5"-6 UNC-2B X 111.25mm. DEEP.  
SPOT FACE TO SUIT IF REQ'D FOR DRILLING

$\phi$ 1.27	S	D	B	$\phi$
0.25	D			

2 X 1.750"-5 UNC-2B X 79.25mm. DEEP.  
SPOT FACE TO SUIT IF REQ'D FOR DRILLING

$\phi$ 1.27	S	E	B	$\phi$
0.25	E			



ENLARGED DETAIL: - X

ITEM NO.	DESCRIPTION	DRAWING NO.	VAR. NO.	RAW MATERIAL SIZE OR CASTING DRG. NO. OR FORGING DRG. NO.	MATERIAL CODE	NET WT.	GROSS WT.
					MATERIAL SPECN.	QUANTITY	

THE FOLLOWING CONDITIONS APPLY EXCEPT OTHERWISE STATED. 1. REF. TO HY0230261 FOR UNSPECIFIED TOLERANCES. 2. CHAMFER M/CD. SHARP EDGES 1.2 TO 1.0 AT 45°. 3. INTERNAL M/CD. CORNER RADI 1 TO 0.7. 4. THE SURFACE ROUGHNESS WHERE-EVER NOT SHOWN SHALL BE TAKEN FROM THE SURFACE ROUGHNESS SHOWN OUT SIDE THE BACK SLASH GIVEN OR THE TOP MOST RIGHT CORNER OF THE DRG.				TYPE OF PRODUCT NAME OF CUSTOMER/PROJECT BHARAT HEAVY ELECTRICALS LIMITED HYDERABAD			
DEPT. PULV. ENGG. CODE 446	UNTO. DIMS. GR. $\phi$ /M/F	SCALE 1:7.5	WEIGHT (KG) 4763.0	DRN. UDAY REDDY	NO. OF VAR. 07.08.13		
TITLE GRINDING ROLL- 72" (HP 1203 BOWL MILL)				CHD. A.SURIN	NO. OF VAR. 07.08.13		
REF. TO ASSY DRG. 2-61-120-02903				APPD. S.GHATGE	NO. OF VAR. 07.08.13		
DRAWING NO. 2-61-120-02903				REV. 00			
SHEET NO. 01				NO OF SHEETS 01			

REV.	DATE	ALTERED CHD.	APPD.	REV.	DATE	ALTERED CHD.	APPD.	REV.	DATE	ALTERED CHD.	APPD.