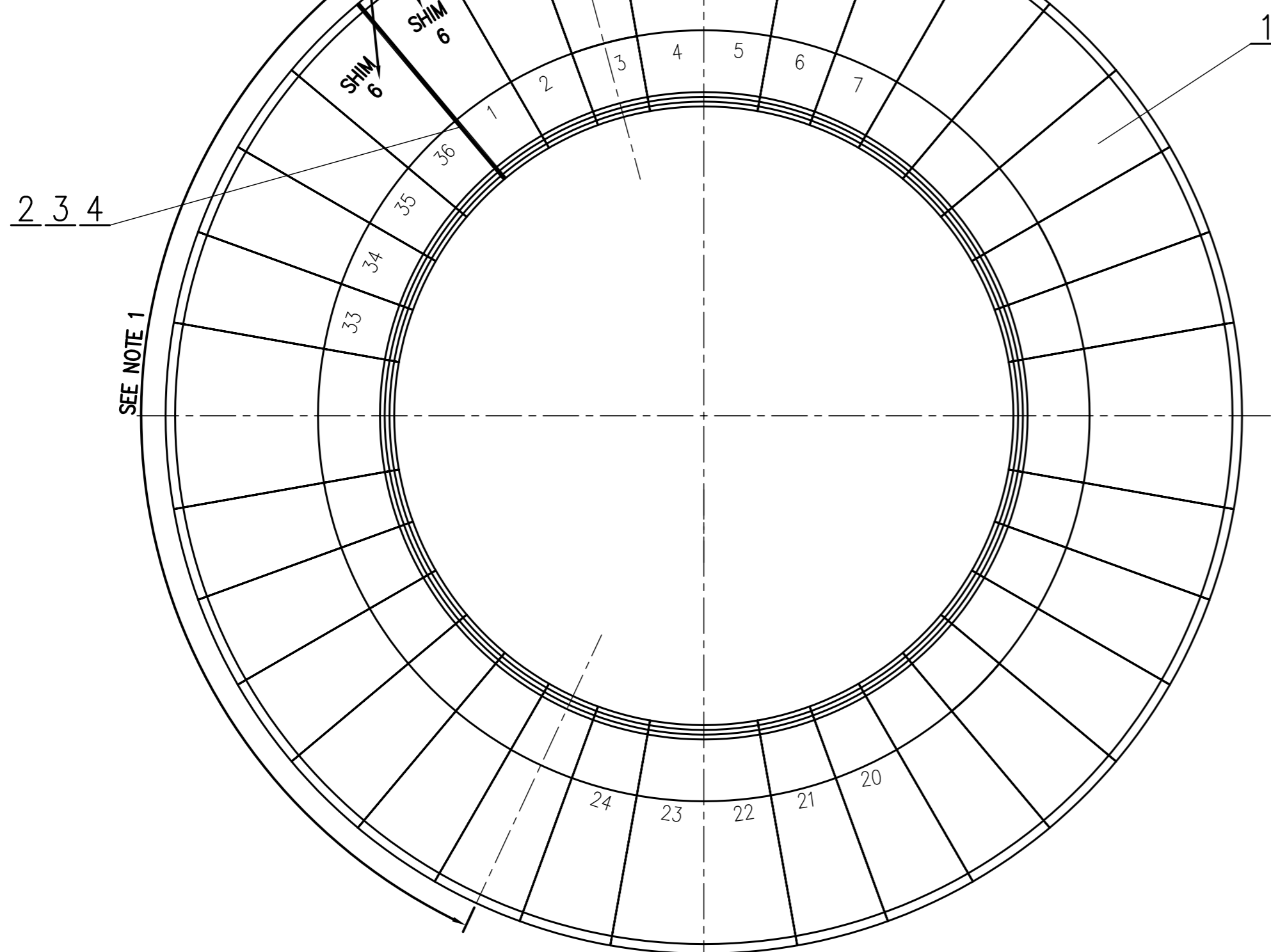


DRG. NO. 2-61-166-01356

THE INFORMATION ON THIS DOCUMENT IS THE PROPERTY OF BHARAT HEAVY ELECTRICALS LIMITED. IT MUST NOT BE USED DIRECTLY OR INDIRECTLY IN ANY WAY DETRIMENTAL TO THE INTEREST OF THE COMPANY.

TYPICAL INDICATION OF POSITION AND SIZE OF SHIM TO BE PAINTED ON BOTH SEGMENTS

1.5 MM MAX. MISMATCH IS ALLOWABLE BETWEEN SURFACES OF ANY TWO ADJACENT SEGMENTS 3 MM MAX. ON FULL RING

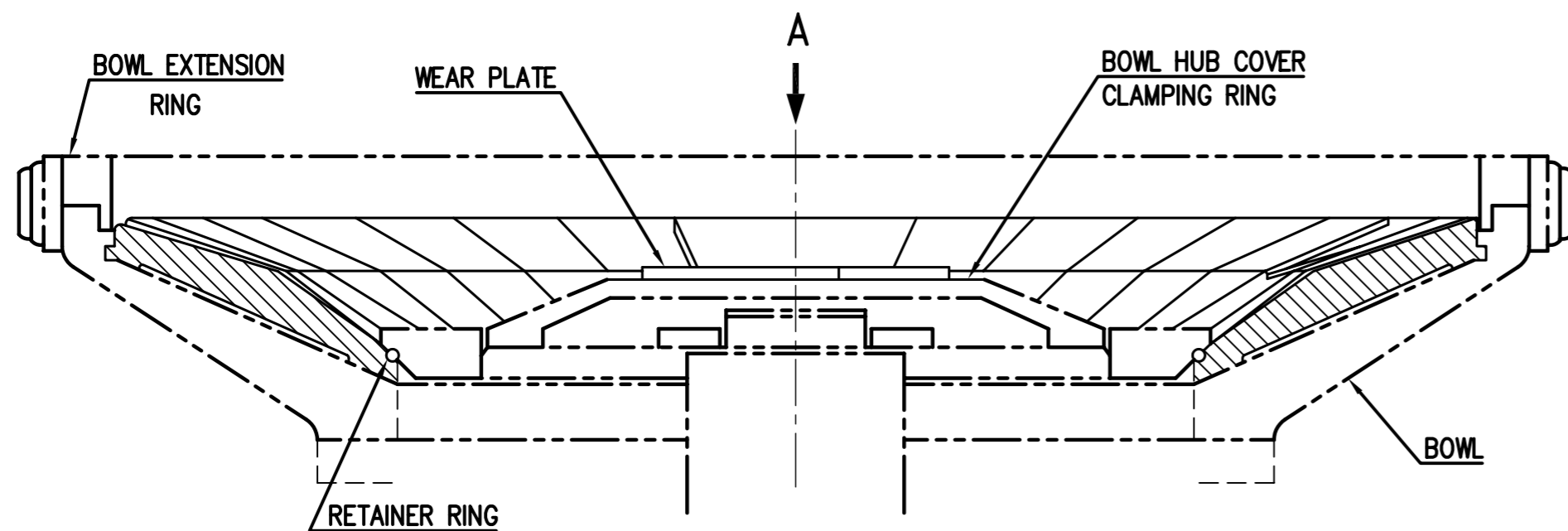


SEE NOTE 1

**NOTES:-**

- SHIM AT POINTS EQUALLY SPACED AROUND PERIPHERY. TOTAL SHIM THICKNESS NOT TO EXCEED 25 MM. NO MORE THAN ONE SHIM TO BE INSTALLED BETWEEN SEGMENTS.

VIEW-A

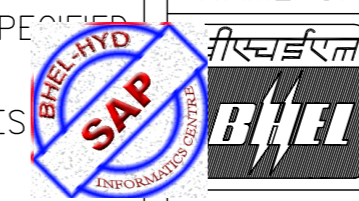


ITEM NO	DESCRIPTION	DRAWING NO.	VAR. NO.	RAW MATERIAL SIZE OR CASTING DRG.NO. OR FORGING DRG.NO.	MATERIAL CODE	NET WT.	GROSS WT.
4	SHIM ; 12 MM	3-61-166-01038	3			1.800	
3	SHIM ; 6 MM	3-61-166-01038	2			0.900	
2	SHIM ; 3.15 MM	3-61-166-01038	1			0.500	
1	BULL RING SEGMENT, PLAIN	2-61-166-01355				18.000	
					CROWN 700	36	
					MATERIAL SPECN.	QUANTITY	

THE FOLLOWING CONDITIONS APPLY EXCEPT OTHERWISE STATED...

- REF. TO HY0230261 FOR UNSPECIFIED TOLERANCES.
- CHAMFER M/CD SHARP EDGES 1.2 TO 1.0 AT 45°.
- INTERNAL M/CD CORNER RADII 1 TO 0.7.
- THE SURFACE ROUGHNESS WHEREVER NOT SHOWN SHALL BE TAKEN FROM THE SURFACE ROUGHNESS SHOWN OUT SIDE BACK SLASHES GIVEN AT THE TOP MOST RIGHT CORNER OF THE DRG.

TYPE OF PRODUCT OR NAME OF CUSTOMER/PROJECT



BHARAT HEAVY ELECTRICALS LTD. HYDERABAD

DEPT. PULV. Engg.	SCALE N.T.S	WEIGHT(Kg) 643.500	REF. TO ASSY DRG. D-66-577	ITEM NO. -	NO. OF ITEMS -
CODE 240	TITLE <b>BULL RING ASSEMBLY</b>		DRAWING NO. <b>2-61-166-01356</b>	REV. <b>00</b>	
SHEET NO. 1		NO OF SHEETS 1			

REV.	DATE	ALTERED	REV.	DATE	ALTERED	REV.	DATE	ALTERED	REV.	DATE	ALTERED
		CHECKED			CHECKED			CHECKED			CHECKED
		APPD.			APPD.			APPD.			APPD.
ZONE			ZONE			ZONE			ZONE		
1			2			3			4		