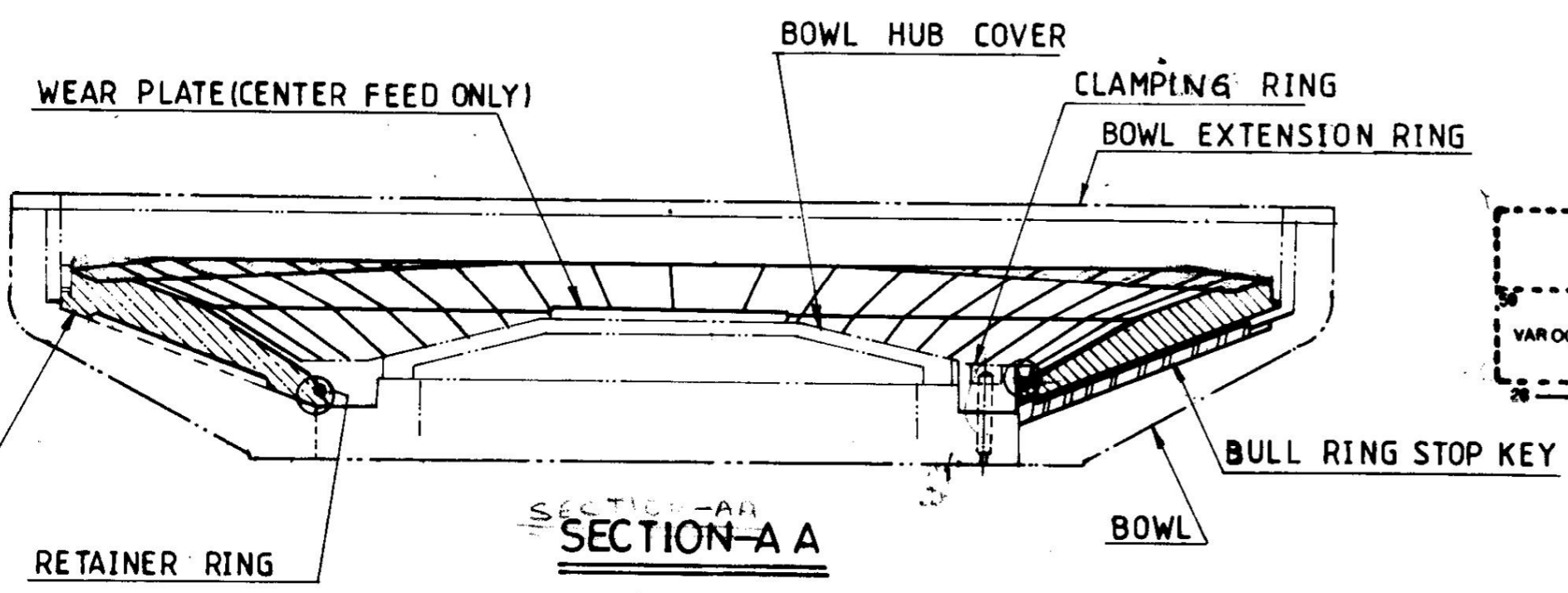


NOTE

- 1) SHIM SET (ITEM NO-04,05 &06.) TO BE INCLUDED, IRRESPECTIVE OF CHECK BOWL REQUIREMENT, IN EACH BULL RING ASSEMBLY.
- 2) SHIM SET TO BE SECURELY WRAPPED OR WIRED AND MARKED WITH PART NUMBER. INSTALL SHIM APPROX 180° FROM KEYWAY SEGMENT.
- 3) ITEM NO. 07 AND 08 MAY BE USED DEPEND UPON THE REQUIREMENT.



ITEM NO.	DESCRIPTION	DRAWING NO.	MATL CODE	UNIT WT.
08	BULL RING SEGMENT - HALF	2-61-188-02335	BA9117053307 HY19770	16.0 1
07	BULL RING SEGMENT QUARTER	2-61-188-02334	BA9117053293 HY19772	8.0 1
06	SHIM - 12 MM	3-61-188-02315	BA9717283281 AA10119	2.50 1
05	SHIM - 6MM	3-61-188-02315	BA9717283273 AA10108	1.10 1
04	SHIM - 3.15MM	3-61-188-02315	BA9717283265 AA10113	1.60 1
03	BULL RING KEYED	2-61-188-02333	BA9117053285 HY19770	30.00 1
02	RESERVED			
01	BULL RING SEGMENT PLAIN	2-61-188-02332	BA9117053271 HY19770	32.00 44

VAR. NO.	REMARKS	VAR. NO.	ITEM NO.	DESCRIPTION	DRAWING NO.	MATL. CODE	MATL. SPECN.	UNIT WT.
01								

THE INFORMATION ON THIS DOCUMENT IS THE PROPERTY OF BHARAT HEAVY ELECTRICALS LIMITED. IT MUST NOT BE USED DIRECTLY OR INDIRECTLY IN ANY WAY DETRIMENTAL TO THE INTEREST OF THE COMPANY.

INVENTORY NO. SIGN AND DATE. REF. DRG. NO.

ADDITIONAL INFORMATION		TYPE OF PRODUCT OR NAME OF CUSTOMER/PROJECT	
STATUS OF DRAWING		883 X R P B M	
DISTRIBUTION OF PRINTS		BHARAT HEAVY ELECTRICALS LTD. HYDERABAD	
APPD: <i>Y.S.B.L.R.</i>		DEPT. D C	DATE 19-2-73
ALTERED: D.C.		CHK. G K	19-2-73
CHECKED: G.K.		APPD. Y.S.B.L.R.	19-2-73
REV. 01	DATE 19-2-73	DEPT. CODE 446	GRADE OF INTOL. DIM. 21 M/F
ZONE	DRAWING RETRACED WT WAS 1467.2	SCALE NTS	WEIGHT (KG) 1438
TITLE BULL RING ASSY.		REF. TO ASSY. DRG. 0-61-188-00501	NO. OF SHEETS 70
DRAWING NO. 2-61-188-02336		SHEET NO. 01	