



Bharat Heavy Electricals Limited

(High Pressure Boiler Plant)

Tiruchirappalli – 620014, TAMIL NADU, INDIA

CAPITAL EQUIPMENT/ MATERIALS MANAGEMENT

An ISO 9001
Company

ENQUIRY	Phone: +91 431 257 7653 Fax : +91 431 252 0031 Email : skaruna@bheltry.co.in Web : www.bhel.com
NOTICE INVITING TENDER	

TWO PART BID	Enquiry Number:	Enquiry Date:	Due date for submission of quotation:
Tender to be submitted in two parts.	2631600051	13.08.2016	10.09.2016

You are requested to quote the Enquiry number, date and due date in all your correspondences. This is only a request for quotation and not an order.
Please note that under any circumstances both delayed offer and late offers will not be considered. Hence vendors are requested to ensure that the offer is reaching physically our office before 14.00 hrs on the Date of tender opening.

Item	Description	Quantity
10	Optimiser 3 Bay as per the technical specification, BHEL commercial terms & conditions applicable (to be downloaded from web site www.bhel.com or http://tenders.gov.in)	01 No.
20	Optimiser Single Bay as per the technical specification, BHEL commercial terms & conditions applicable (to be downloaded from web site www.bhel.com or http://tenders.gov.in)	01 No.

Important points to be taken care during submission of offer

1. Compliance Form to be duly filled and enclosed along with your offer, failing which the offer will not be considered for evaluation.
2. All updates, amendments, corrigenda, etc., (if any), for each tender will be posted only on the above websites from time to time, as and when required, until each tender is opened. There will be no publication of such updates, amendments, corrigenda, etc., through newspapers or any other media.

BHEL's General guidelines / instructions including bank guarantee formats and list of consortium banks, commercial compliance form can be downloaded from BHEL web site <http://www.bhel.com> or from the Government tender website <http://tenders.gov.in> (public sector units) Bharat Heavy Electricals Limited page) under Enquiry reference "2631600051".

<p>Tenders should reach us before 14:00 hours on the due date Tenders will be opened at 14:30 hours on the due date Tenders would be opened in presence of the tenderers who have submitted their offers and who may like to be present</p>	<p>Yours faithfully, For BHARAT HEAVY ELECTRICALS LIMITED</p> <p><i>Saranya</i> C. SARANYA Senior Engineer MM / Capital Equipment BHEL / Tiruchirappalli - 620 014.</p>
---	---

Specification for Drive Type Optimizer Storage System (3 Bay) – 1 No.

Optimizer Storage System – An Efficient space saving storage arrangement catering to a variety of office requirements for storage of office files, stationary items, manuals, documents, etc.

Three Bay with Three Twin Mobile Drive Type Optimizer -

Each of above configurations can have the following type of blocks:

- Single Face Fixed Unit (SFFU)
- Single Face Movable Unit (SFMU)
- Double Faced Movable Unit (DFMU)

The Optimizer shall be of Box Cladded structure with 0.8mm (minimum) thickness CRCA Steel conforming to IS:513 Gr.D for back, side and top sheets. Each body block (SFFU/DFMU/SFMU) building consists of one main unit & then Add-on units to make **three bay**. Twin mobile blocks are to be placed in between single static and single last units. The number of twin mobile blocks required for BHEL = 3.

A. SINGLE FACE FIXED BLOCK & SINGLE FACE (LAST) MOVABLE BLOCK:

Dimensions of single face static block and single face last drive block are given below:

1. Width : Around 900 mm
2. Depth : Around 450 mm
3. Height : Around 1950 mm
4. No. of Loading Levels : 5 level formed by 4 Nos. of adjustable shelves

B. DOUBLE FACED MOVABLE BLOCK:

Dimensions of double faced movable blocks (twin mobile with centre partition) are given below:

1. Two units of same size of individual block as mentioned in 'A' shall be integrated.
2. No. of Loading Levels : 5 level formed by 4 Nos. of adjustable shelves on each side.

The above body units are to be bolted to the undercarriage. The approximate height of undercarriage shall be 65mm (approx) and height of rails shall be 35mm (approx).

Painting: The steel bodies including shelves are to be treated for antirust surface and powder coated with approved colour. The final finish shall be of epoxy polyester powder coating with a dry film thickness of minimum 40 microns. Before powder coating, metal surfaces are to be treated for anti rust and cleaned properly.

Note: Vendors shall be asked to submit particulars of their previous supplies, details of P.O, Customer list with contact details.

Partitions / Accessories for Optimisers:

1. Total height from ground level shall be approx. 100 mm more than the height of superstructure (1950 mm body + 65mm undercarriage + 35mm channel)
2. General arrangement as per enclosed sketches.
3. Under carriage shall be of fabricated type using structural steel sections.
4. Bolted construction for superstructure with steel slotted / rolled / formed angles(as required), corner plates, electroplated / galvanized nuts & bolts are to be used.
5. All load-bearing shelves shall be of 1.0 mm (minimum) thickness CRCA steel sheet with allowable load carrying capacity of 70 kg. per shelf.
6. One number of acrylic or metallic card holder has to be provided in static and last dive block. In twin mobile, two numbers of acrylic or metallic card holders shall be provided.
7. Suitable square steel bright bar / channels of suitable size are to be used for rails for smooth operation.
8. Drive Wheel : For the movement of units a drive wheel and sprocket-chain mechanism with provision for manual locking of individual units when in use has to be provided.
9. Centralised locking arrangement has to be provided through locking stiffener mounted onto the back of single last unit so that it gets locked on channels when all the units are brought together.
10. Each drive type unit has to be provided with locking knob near the Drive wheel for manual locking of individual units when a person is using those units.

General:

1. The proposed system is *Drive Type* optimizer with drive wheels fitted. The system shall be such that the manual effort required for opening / closing of the rack is minimum.
2. Required length of rails / channels are to be provided for each system.
3. Suitable elegant wheels shall be provided on the mobile blocks for opening / closing .
4. The aisle width shall be sufficient enough for a person to enter inside and access either side of the storage racks. The Equipment is to be guaranteed for its satisfactory performance for 12 months from the date of installation.
5. Offers received from Indian OEMs only will be considered by BHEL.
6. OEM should have their own press brake, powder coating plant with baking oven, powder coating applications, etc.
7. Offers received from other than OEMs without required facilities as mentioned in point No. 6 will not be considered by BHEL.

Specification for Drive Type Optimizer Storage System (Single Bay) – 1 No.

Optimizer Storage System – An Efficient space saving storage arrangement catering to a variety of office requirements for storage of office files, stationary items, manuals, documents, etc.

Single Bay with Two Twin Mobile Drive Type Optimizer -

Each of above configurations can have the following type of blocks:

- Single Face Fixed Unit (SFFU)
- Single Face Movable Unit (SFMU)
- Double Faced Movable Unit (DFMU)

The Optimizer shall be of Box Cladded structure with 0.8mm (minimum) thickness CRCA Steel confirming to IS:513 Gr.D for back, side and top sheets Each body block (SFFU/DFMU/SFMU) building consists of one main unit as **single bay**. Twin mobile blocks are to be placed in between single static and single last units. The number of twin mobile blocks specified by BHEL = 2.

C. SINGLE FACE FIXED BLOCK & SINGLE FACE (LAST) MOVABLE BLOCK:

Dimensions of single face static block and single face last drive block are given below:

1. Width : Around 900 mm
2. Depth : Around 450 mm
3. Height : Around 1950 mm (With out undercarriage and rails)
4. No. of Loading Levels : 5 level formed by 4 Nos. of adjustable shelves

D. DOUBLE FACED MOVABLE BLOCK:

Dimensions of double faced movable blocks (twin mobile with centre partition) are given below:

- 1 Two units of same size of individual block as mentioned in 'A' shall be integrated.
2. No. of Loading Levels : 5 level formed by 4 Nos. of adjustable shelves on each side.

The above body units are to be bolted to the undercarriage. The approximate height of undercarriage shall be 65mm (approx) and height of rails shall be 35mm (approx).

Painting: The steel bodies including shelves are to be treated for antirust surface and powder coated with approved colour. The final finish shall be of epoxy polyester powder coating with a dry film thickness of minimum 40 microns. Before powder coating, metal surfaces are to be treated for anti rust and cleaned properly.

Note: Vendors shall be asked to submit particulars of their previous supplies, details of P.O, Customer list with contact details.


SREE HARIHARA VIGNESH
Sr. Executive (HR - BPN & ENGG)
Bharat Heavy Electricals Limited
Tiruchirappalli - 620 014.

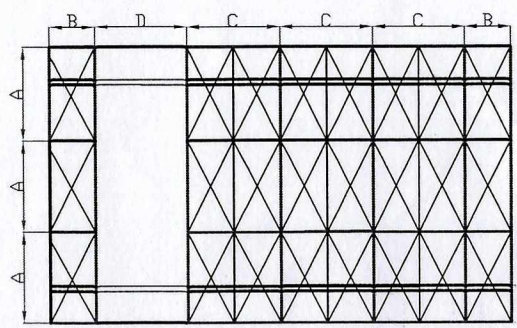
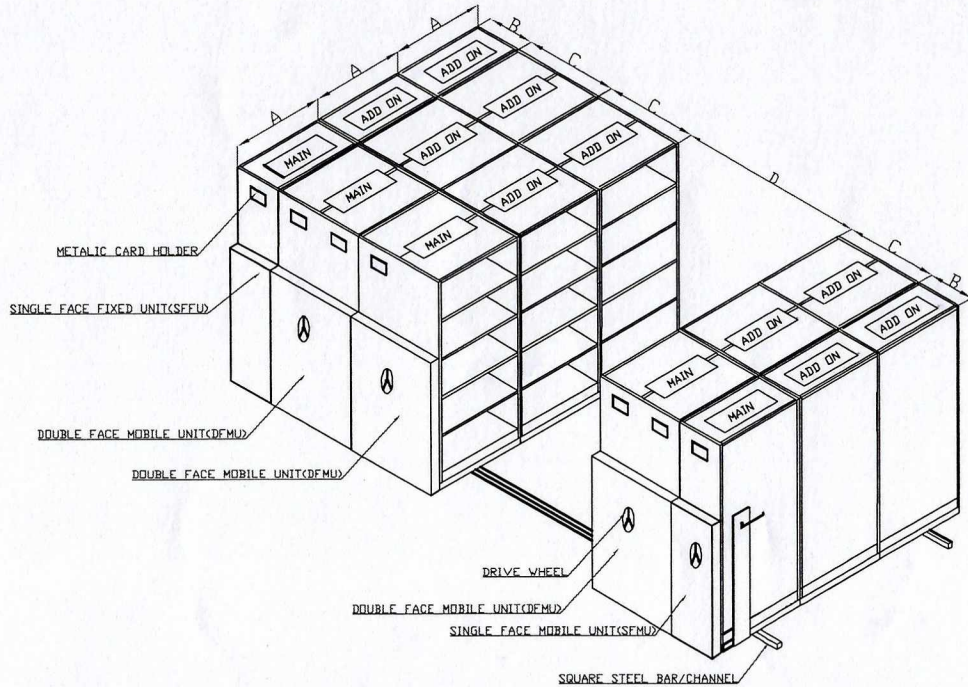
Partitions / Accessories for Optimiser:

1. Total height from ground level shall be approx. 100 mm more than the height of superstructure (1950 mm body + 65mm undercarriage + 35mm channel)
2. General arrangement as per enclosed sketche.
3. Under carriage shall be of fabricated type using structural steel sections.
4. Bolted construction for superstructure with steel slotted / rolled / formed angles(as required), corner plates, electroplated / galvanized nuts & bolts are to be used.
5. All load-bearing shelves shall be of 1.0 mm (minimum) thickness CRCA steel sheet with allowable load carrying capacity of 70 kg. per shelve.
7. One number of acrylic or metallic card holder has to be provided in static and last dive block. In twin mobile, two numbers of acrylic or metallic card holders shall be provided.
8. Suitable square steel bright bar / channels of suitable size are to be used for rails for smooth operation.
9. Drive Wheel : For the movement of units a drive wheel and sprocket-chain mechanism with provision for manual locking of individual units when in use has to be provided.
10. Centralised locking arrangement has to be provided through locking stiffener mounted onto the back of single last unit so that it gets locked on channels when all the units are brought together.
11. Each drive type unit has to be provided with locking knob near the Drive wheel for manual locking of individual units when a person is using those units.

General:

1. The proposed system is *Drive Type* optimizer with drive wheels fitted. The system shall be such that the manual effort required for opening / closing of the rack is minimum.
2. Required length of rails / channels are to be provided for each system.
3. Suitable elegant wheels shall be provided on the mobile blocks for opening / closing .
4. The aisle width shall be sufficient enough for a person to enter inside and access either side of the storage racks. The Equipment is to be guaranteed for its satisfactory performance for 12 months from the date of installation.
5. Offers received from Indian OEMs only will be considered by BHEL.
6. OEM should have their own press brake, powder coating plant with baking oven, powder coating applications, etc.
7. Offers received from other than OEMs without required facilities as mentioned in point No. 6 will not be considered by BHEL.

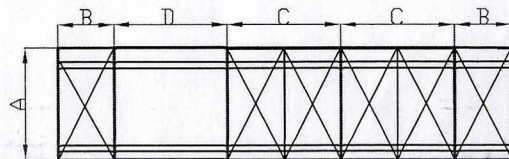
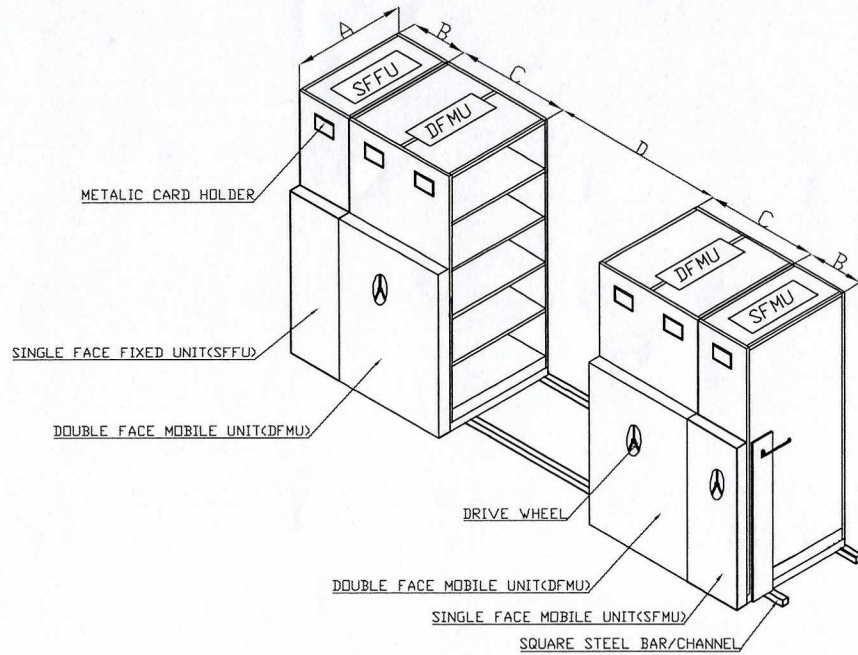
GENERAL ARRANGEMENT OF 03 BAY WITH 03 TWIN MOBILE OPTIMIZER



DIMENSIONS IN MM (APPROX.)

A	B	C	D
900-3 Nos	450-02 Nos	900-03 Nos	900

GENERAL ARRANGEMENT OF SINGLE BAY WITH TWO TWIN MOBILE OPTIMIZER



DIMENSIONS IN MM (APPROX.)

A	B	C	D
900	450-02Nos	900-02 Nos	900