



MATERIALS MANAGEMENT / RM
CAPITAL PURCHASE/CP & SP
BHEL TRICHY -620014

Enquiry Corrigendum-1

NIT No – 26867

Enquiry No. 2661600118 dated 15.03.2016

Extended due date for submission of quotation: 30.03.2016

Item Description: BALL SCREW & NUT ASSEMBLY

Details of Corrigendum:

*Drawing details are attached

- The offer should reach us 30 minutes before the time of opening of tenders. In case the offer has been sent already, the same need not be sent again.

P.S. In the event of non-participation in this tender, please send your response without fail by email/fax.

All other terms & conditions as published in the above NIT No. remain unaltered.

NOTE:

Confirmation of acceptance for BHEL Commercial terms & conditions & Price Bids formats have been posted in BHEL corporate website www.bhel.com or from the government tender website <http://tenders.gov.in> (public sector→Bharat Heavy Electricals Limited page) under Enquiry reference “ 2661500078”

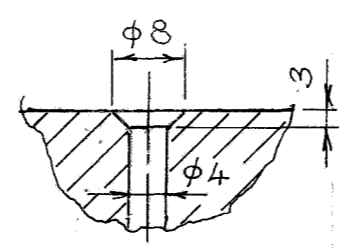
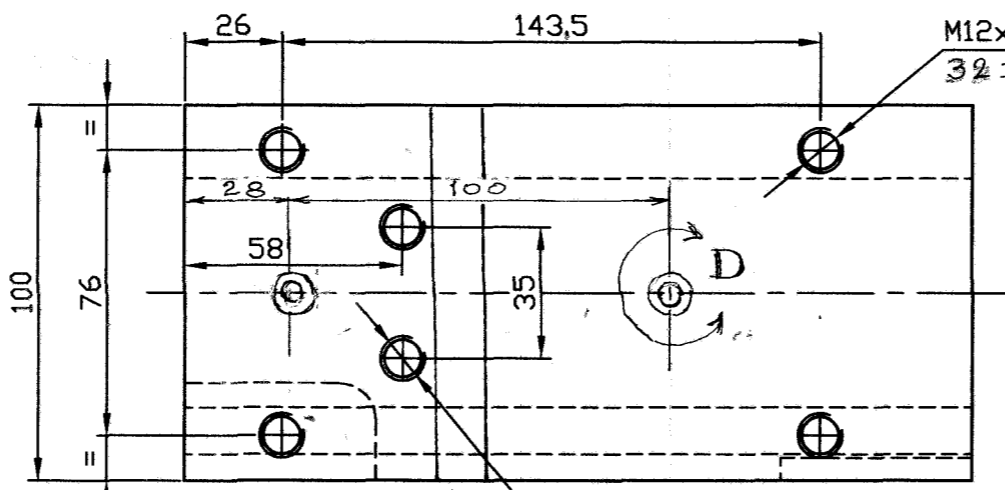
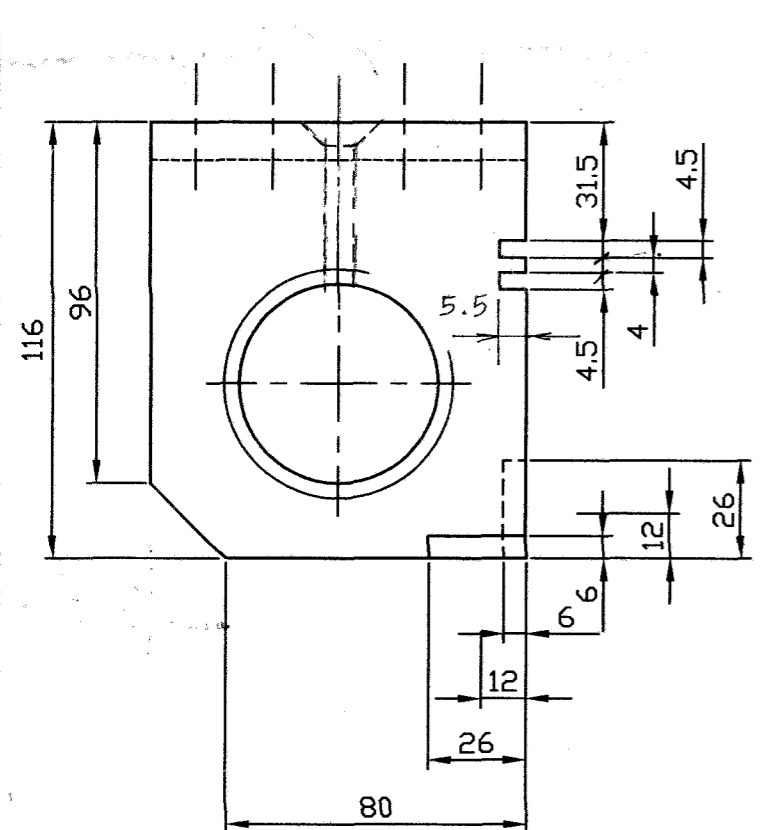
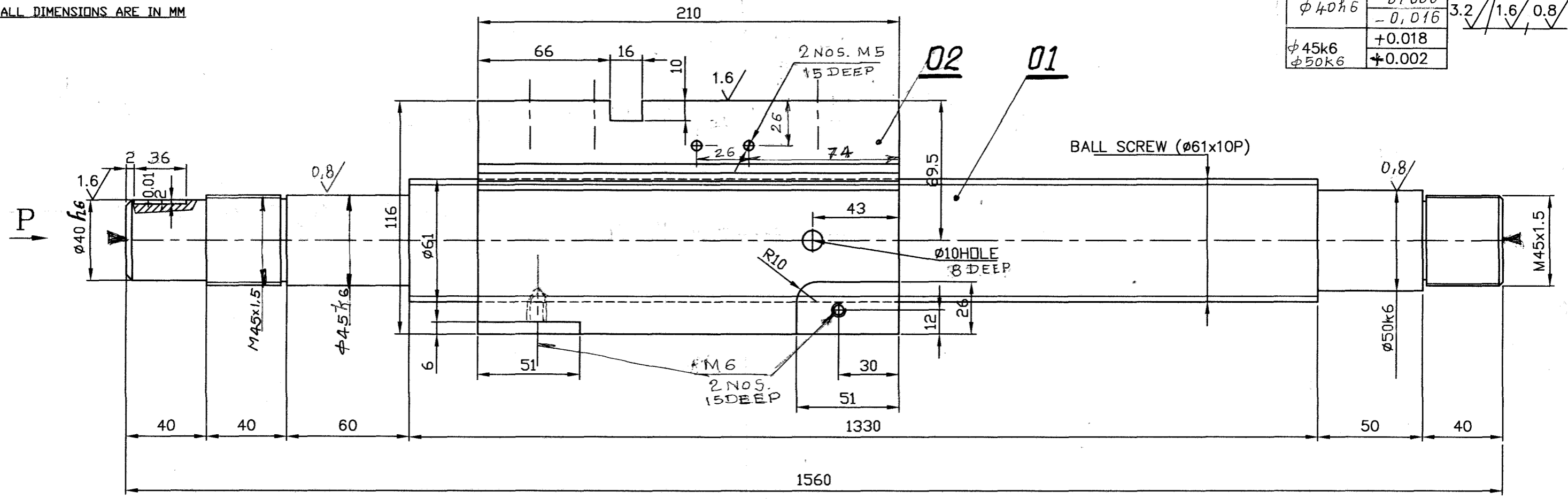
FOR BHEL TRICHY:

AAST.ENGINEER/CP & SP

CAUTION: THIS DRAWING IS OUR SOLE PROPERTY AND SHOULD NOT BE USED IN ANY FORM FOR ANY PURPOSE WITHOUT THE WRITTEN PERMISSION OF BHARAT HEAVY ELECTRICALS LIMITED TRICHIRAPPALLI - 620 014.

ALL DIMENSIONS ARE IN MM

$\phi 40 \pm 0.016$	-0.000 -0.016	3.2//1.6/0.8/
$\phi 45 \pm 0.018$ $\phi 50 \pm 0.002$	+0.018 +0.002	



DETAIL-D

M12x4 Nos. BALL SCREW DESIGNATION
3/2 DEEP
BALL SCREW ISO-3408-XXX-XXX-01330-P01R
NOMINAL DIA & LEAD - AS PER DRAWING STD.
ACCURACY GRADE : 01

FOR TENDERING PURPOSE ONLY

SCANNED

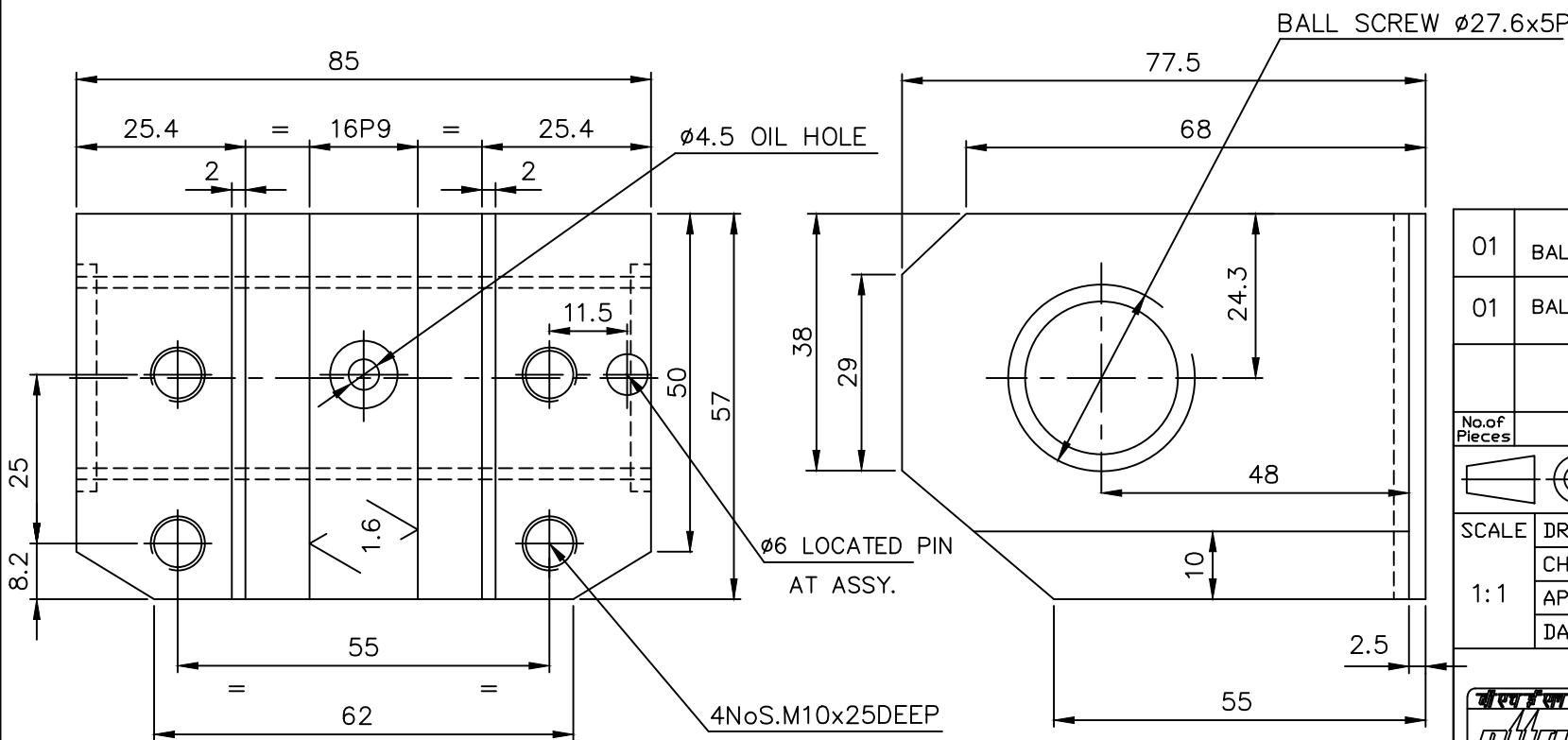
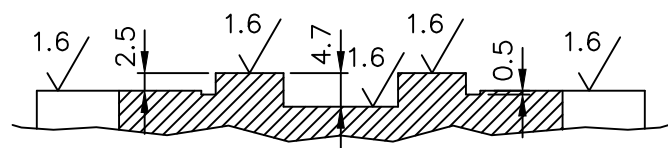
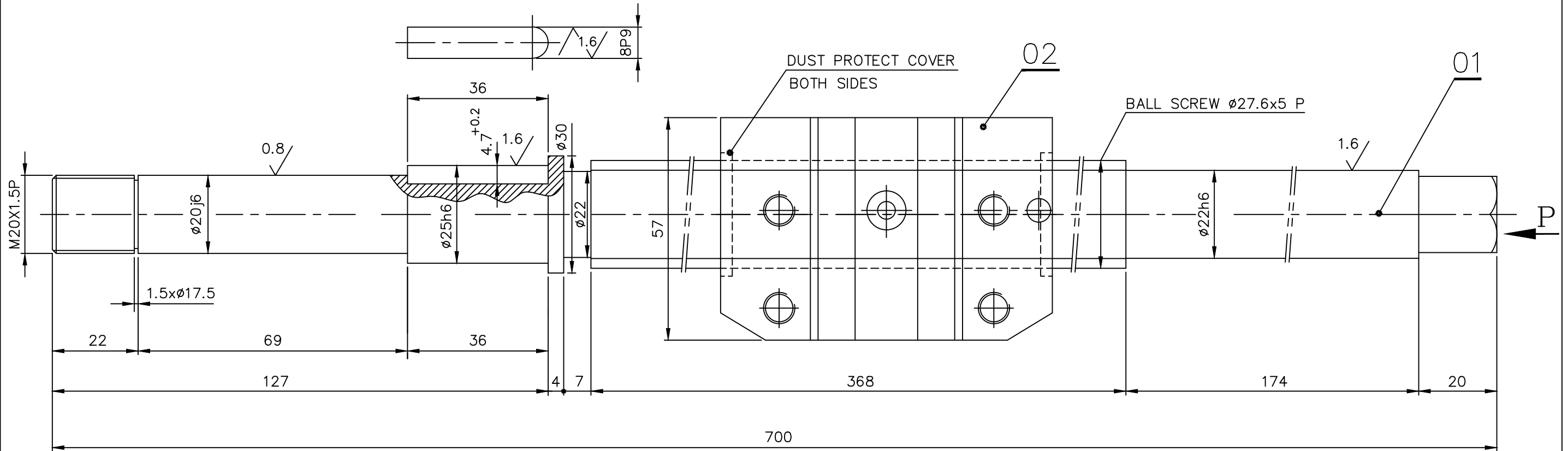
01	BALL SCREW NUT ($\phi 61 \times 10P - 210$)		IS: 14872				02
01	BALL SCREW ROD ($\phi 61 \times 10P - 1560$)		IS: 14872				01
No. of Pieces	DESCRIPTION	MATERIAL	STANDARD	NET.WT. IN KGS.	DRAWING No.	ITEM No.	
	REFERENCE:	ALTERATIONS:		DCN REF	DATE	SIGN.	INDEX
SCALE	DRAWN	M.K.V					
	CHECKED	R. Ramanathan					
1:2	APPROVED	[Signature]					
	DATE	26-07-04					
MACHINE: NC LATHE		TYPE: VDF					
TITLE: BALL SCREW [X-AXIS] ($\phi 61 \times 10P - 1560$)		DRAWING No:		C.C. REV.			
		3M08F0812481					
Sheet No:		No. of Sheets:					

VIEW-P

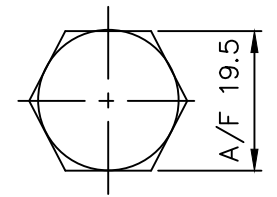
CAUTION: THIS DRAWING IS OUR SOLE PROPERTY AND SHOULD NOT BE USED IN ANY FORM FOR ANY PURPOSE WITHOUT THE WRITTEN PERMISSION OF BHARAT HEAVY ELECTRICALS LIMITED TRICHIRAPPALLI - 620 014.

ALL DIMENSIONS ARE IN MM

8P9	-0.015	ø22h6	-0.000	3.2 / 1.6 / 0.8
	-0.051	ø25h6	-0.013	
16P9	-0.018	ø20j6	+0.009	
	-0.061		-0.004	



BALL SCREW DESIGNATION: -
 BALL SCREW ISO-3408-XXX-XXX-01330-POIR
 NOMINAL DIA LEAD - AS PER DRAWING STD
 ACCURACY GRADE: 01
 ALL CORNERS TO BE CHAMFERED 1/45°



FOR TENDERING PURPOSE ONLY

VIEW-P

01	BALL SCREW NUT ø27.6x5Px85 L		IS:14872			02
01	BALL SCREW ROD ø27.6x5Px700 L		IS:14872			01
No. of Pieces	DESCRIPTION	MATERIAL	STANDARD	NET.WT.IN KGS.	DRAWING No.	ITEM No.
	REFERENCE: LOC. NO. 48072934		ALTERATIONS:	DCN REF	DATE	SIGN. INDEX
SCALE	DRAWN/TCD	S.Selvamanickam				
1:1	CHECKED	R.RAMAMOORTHY				
	APPROVED	C.S.JAYASHEELAN				
	DATE	14.09.04/22.08.11'				
	MACHINE:	HORIZONTAL BORING		TYPE: SACEM-MSMG-125		
	TITLE:	BALL SCREW ASSY. ø27.6x5Px700 L (FACE PLATE ASSY.)		DRAWING No:		REV.
				3M01B2012459		
				Sheet No:		No. of Sheets: