

PSGSG/2013-14/015	Product specifications for Expansion Joints with Bellows For 145 kV GIS	Drawing No.: 35200501302A Date: 05.08.2013
-------------------	--	--

S. No.	Feature	Description	Vendor Compliance(Y/N)
1.	Purpose	Expansion joint with bellows for SF6 Gas Insulated Switchgear.	
2.	Quantity	15 Nos.	
3.	Spares and Services	All the Requisite Spares and necessary service will be provided.	
4.	Mounting Arrangements	Detailed Mounting possible arrangements and angle of mounting shall be provided.	
5.	Factory Tests	Detailed type test reports shall be furnished with technical offer. All routine tests have to be carried out on the equipment being offered and test reports to be submitted along with the supply.	
6.	Operating Conditions	A) Temperature Min.: 0 °C Max: 50 °C B) Operating Pressure: 6.5 bar	
7.	Testing Conditions	A) Test Pressure: 13 Bar(for 15 Min.) B) Test Medium: Air	
8.	Travel & Cycles	A) Axial Traverse: Expansion: 20 mm(min.) Compression: 35 mm(min.) B) Angular Rotation: 10 deg.(min.) C) Lateral Offset: 10 mm(min.)	
9.	Bellows Height	Bellows height shall be less than to Flange Diameter preferably .	
10.	Lifting Lugs	Lifting Lugs should be provided at suitable place.	
11.	Material:	Flange: SS-304L Bellows: SS-304L Tie Rods: SS-304L Lugs:- SS-304L Gas Stud: SS-304L Pipe: SS-304L	
12.	Thickness of pipe:	4.75 mm	
13.	Thickness of Bellows:	Should be such that fulfill above requirements.	
14.	Dimensions:	As per Attached Drawing.	
15.	Qualifying Requirements:	The supplier shall be of national / International repute with proven record and should have supplied Expansion joint with bellows for high pressure applications. The supplier must submit along with the quotation a few references to whom the supplier has supplied a similar material.	

PSGSG 2013-14/0015	Signature	
--------------------	-----------	--

00121 57 520 75 12100

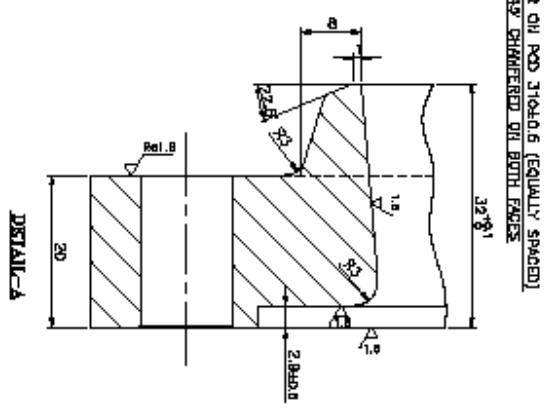
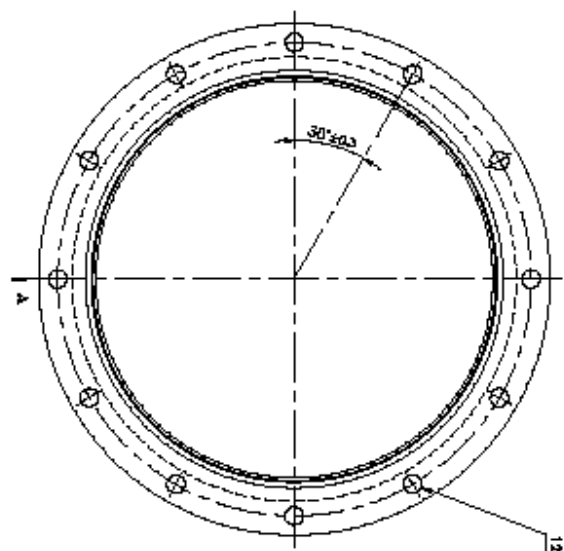
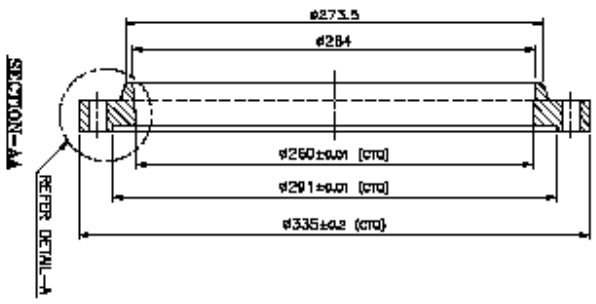
FIRST WHOLE PROJECTION

(ALL DIMENSIONS ARE IN MM)

THE INFORMATION ON THIS DOCUMENT IS THE PROPERTY OF EBHART HEAVY ELECTRICALS LIMITED.
IT MUST NOT BE USED DIRECTLY OR INDIRECTLY IN ANY WAY RETRIBUTIVE TO THE INTEREST OF THE COMPANY.

INVENTORY NO. DESG. AND DATE. REF. DESG. NO.

FINISH-- INSIDE GROOVE Ra1.8
CTR-- CRITICAL TO QUALITY



NO	QTY	DESCRIPTION	UNIT	DATE	BY	CHKD

TYPE OF FINISH: **GSM-145**

NAME OF CUSTOMER: **EBHART HEAVY ELECTRICALS LTD.**

HYDROHEAD

DATE: **3 520 75 12100**

DESIGNER TEL: **1**

INSTR. NO. **1**

NO. OF SHEETS **1**

DATE: **3 520 75 12100**

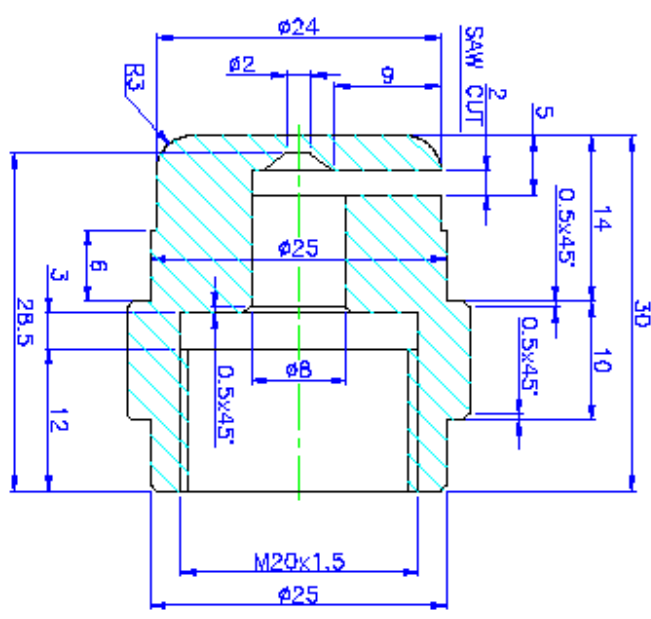
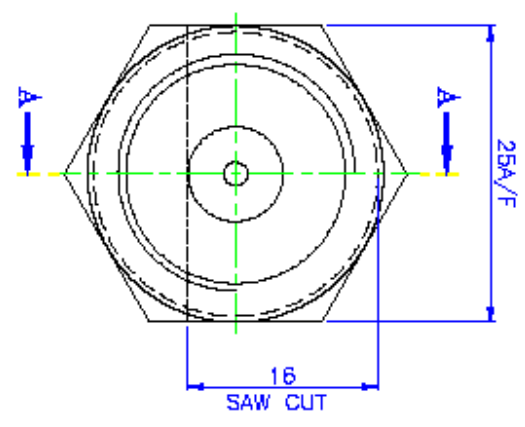
DESIGNER TEL: **1**

INSTR. NO. **1**

NO. OF SHEETS **1**

FLANGE

THE INFORMATION ON THIS DOCUMENT IS THE PROPERTY OF BHARAT HEAVY ELECTRICALS LIMITED.
IT MUST NOT BE USED, REPRODUCED OR IN ANY MANNER DETRIMENTAL TO THE INTEREST OF THE COMPANY.



SECTION-AA

- NOTE:**
1. TO BE WELDED TO ENCLOSURE PIPE
DRILL AND DEBURR $\phi 24.0$ HOLE IN BASE
AND WELD FULL ON EXTERNAL SURFACE.

FACTORY NO.	REV. AND DATE	REV. DATE IS
NAME OF PRODUCT		
GSM-145		
NAME OF COMPANY		
BHARAT HEAVY ELECTRICALS LTD.		
HYDERABAD		
DESIGNER	ENGINEER	DRW. NO.
CHKD. BY	APPV. BY	DATE
TITLE		
GAS STUD		
QUANTITY	ISSUE NO.	ISSUE DATE
3	75	12/02
DRAWING NO.		
3 520 75 12/02		
REV. NO.		
1		