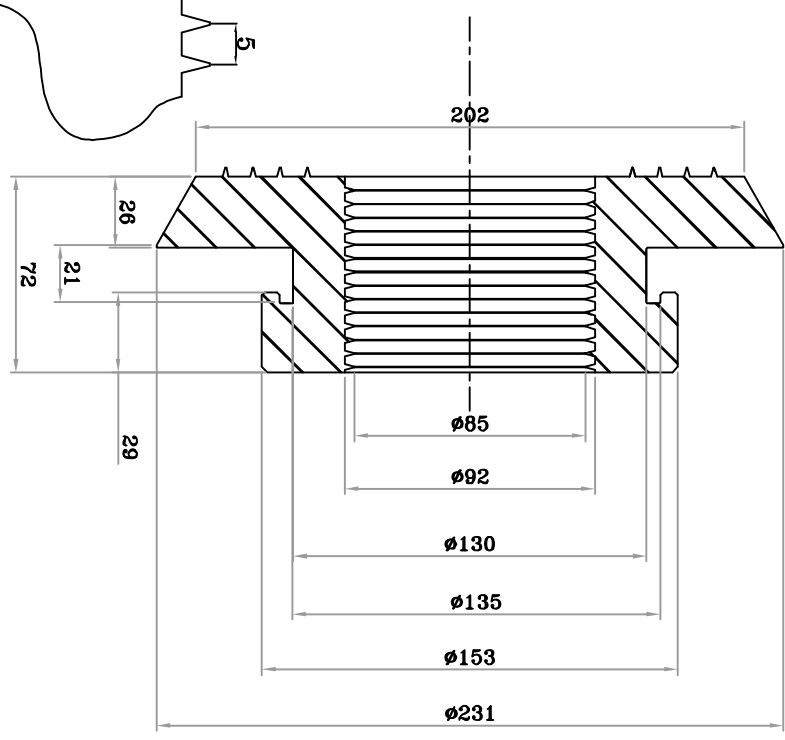
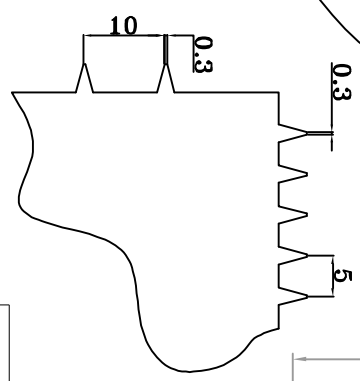
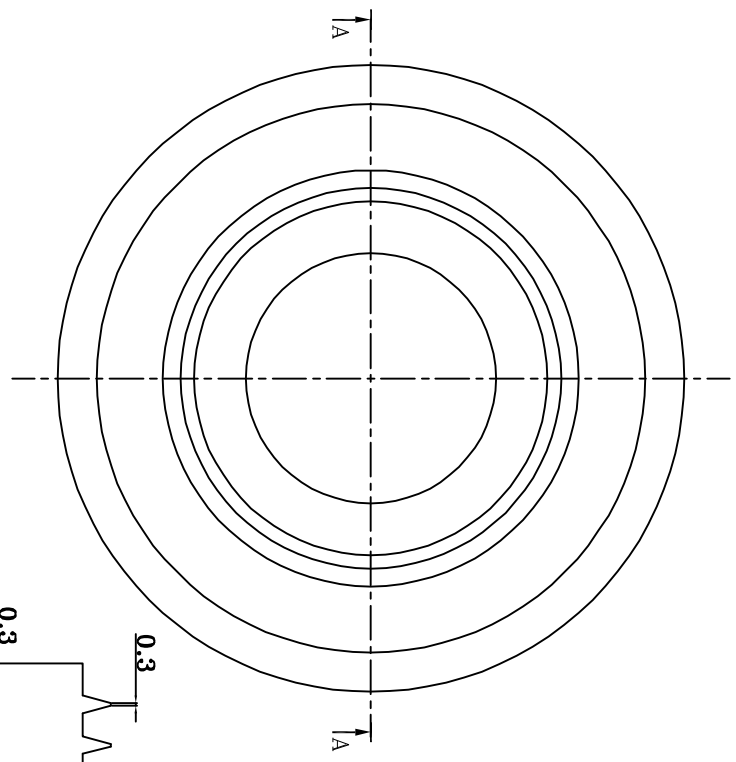


FIRST ANGLE PROJECTION

(ALL DIMENSIONS ARE IN mm)

GENERAL DIMENSIONAL LIMITS, FITS & TOLERANCES AS PER HY0230261



SPLIT IN TO TWO PARTS

THIS IS TENTATIVE DRAWING.

- GENERAL NOTE:
- 1) IN CASE OF DOUBT, DON'T ASSUME, PLEASE ASK.
 - 2) GENERAL DIMENSIONAL TOLERANCE IS ±0.1 MM
 - 3) HORIZONTAL SPLIT
 - 4) MATERIAL: AVIONAL 14

TYPE OF PRODUCT OR NAME OF CUSTOMER/PROJECT		PERFORMANCE TESTING OF 500 MM DIA. 2D F5 IMPELLER		(QYH-13-599-RD-50)	
DEPT. TML		BHARAT HEAVY ELECTRICALS LIMITED		CORP. R&D Division, Vikasnagar HYDERABAD - 500 093	
UNTO. DIMS. GR. C/M/F		SCALE		WEIGHT (KG)	
050		N.T.S		REF. TO ASSY. DRG. RD DG 3 TM 15 F-1	
TITLE		CARD CODE		DRAWING NO.	
BEARING SEAL		N.A.		RD DG 3 TM 15 F-8	
SHT. No. 1		NO. OF SHT. 1		REV. 0	
NAME		SIGN.		DATE	
VINAY				03.02.15	
CHD. AMBRISH				N.A.	
APPD. N.K.SINGH					
NO. OF VARS.					
ITEM NO.					
NO. OF ITEMS					
N.A.					