



Bharat Heavy Electricals Limited

(Seamless steel Tube Plant)

Tiruchirappalli – 620014, TAMIL NADU, INDIA

| | |
|---|--|
| TITLE: SUPPLY OF INTERNAL TUBE END CAPS, DIA: 43 MM & 15 MM. | Phone: +91 431 257 8480 +91 431 257 8419 Email : neerajxalxo@bheltry.co.in Web : www.bhel.com |
|---|--|

| | | |
|----------------------------|------------------|--|
| Reference Number: 9831266E | Date: 23.01.2014 | Due date for submission of application: 13.02.2014 |
|----------------------------|------------------|--|

A. BHEL/SSTP, Trichy is looking for vendors to supply Internal Tube End Caps, Dia: 43 & 15 mm as per Tender documents attached.

B. Important Note to New Vendors

The new vendors will be required to furnish the following documentary proof/ information along with their offers:

1. Certificate of registration (copy of certificate to be submitted).
2. Banker's information (copy of bank pass book first page to be submitted).
3. MSME vendor certificate (if applicable).
4. Address of your organization (complete postal address with PINCODE).
5. Contact person's Phone No. /Mobile No. / FAX No. /E-mail ID.
6. Statutory documents – VAT / TIN / EXCISE REGISTRATION / CST REGN / SERVICE TAX REGISTRATION etc. (copy to be furnished)
7. NSIC/SSI Certificate (if applicable)
8. ISO Certificate (if applicable)
9. Experience certificate as proof of supply of similar items to any Govt. agencies / PSU / Organisations (copy of PO's to be furnished).
10. Audit Report/ IT Return (if applicable)
11. Agency agreement with manufacturer (if applicable)
12. Partnership Deed (if applicable).

If the new vendors fail to submit the above documentary proof/information, their offers will not be considered for this enquiry.

Purchase Officer/SSTP
Phone: 0431-257 8502.
Mail: neerajxalxo@bheltry.co.in



BHARAT HEAVY ELECTRICALS LTD.
 (A GOVERNMENT OF INDIA UNDERTAKING)
 SEAMLESS STEEL TUBE PLANT
 TIRUCHIRAPPALLI - 620 014.
 TAMIL NADU.

PHONE : 0431-2578480,
 2578547,2578428,
 2578406
 FAX : 0431-2520464/383

TIN : 33243560005
 CST No. 239383
 Dated 11.06.1991

PURCHASE ENQUIRY

| | | | | |
|----------------------|----------------------------|----------------------------|--------------------------------|------------------|
| VENDOR CODE 20186 | ENQUIRY NUMBER 9831266E | ENQUIRY DATE 23/01/2014 | ENQUIRY DUE DATE 13/02/2014 | No.OF ITEM 02 |
|----------------------|----------------------------|----------------------------|--------------------------------|------------------|

Office Copy

- IMPORTANT POINTS :**
1. Tender Closing Time - 14.00 Hrs.
 2. Tender Opening Time - 15.00 Hrs.
 3. Tender should be submitted in a sealed cover, duly indicating enquiry No., Enquiry date & Enquiry Due Date on the cover.
 4. Offer(s) received through Courier Services after 14.00 Hrs. on Enquiry Due Date not be considered.
 5. Late Tender (s) is/are liable for rejection.
 6. Offer(s) shall be valid for 60 days from Enquiry Due Date.
 7. Offer(s) in Vendor's Letter-Head shall contain.
 - a. Offer No. and Date
 - b. Delivery Period
 - c. Delivery Terms
 - d. Payment Terms
 - e. Excise Duty with Tariff Heading Sales Tax (against form-XVII/Form-C), etc.
 - f. Excise Regn. No. and SSI Regn. No.

Kindly arrange to submit your **COMPETITIVE OFFER** for the following item(s).
 If you are not in a position to submit your Offer, kindly arrange to send your **REGRET LETTER**.

THIS IS ONLY A REQUEST FOR OFFER AND NOT AN ORDER

| Sl.No. | BHEL Material Code and Description | Unit | Requirement | |
|---|---|---------|-------------|------------|
| | | | Quantity | Delivery |
| 01 | BHEL Material Code : SP5943598430 ----- INTERNAL TUBE END CAP DIA 43 MM MADE OF VIRGIN QUALITY LDPE TO IS 3389 AS PER DRG NO:30-ST-999-00-389. | Nos. 01 | 600.000 | 05/04/2014 |
| 02 | BHEL Material Code : SP5943898158 ----- INTERNAL TUBE END COVER DIA 15 mm MATERIAL:VIRGIN QUALITY WHITE LDPE TO IS.3389. DRAWING No. 30-ST-999.00-389 REV 00 | Nos. 01 | 1200.000 | 05/04/2014 |
| <p>Foot Note ::</p> <p>1. Tender is floated on TWO PART BID. Tenderers are requested to submit the offer in TWO PART only: A. Part-I .. Technical & Un-Priced Commercial Bid B. Part-II .. Price Bid. Kindly refer to the attached Annexure-A for submission of offer.</p> <p>2. Tender will be evaluated for placement of PO on Overall L-1 basis. Offer will be taken up for evaluation only if all the materials are quoted.</p> <p>3. Materials are to be supplied as per enclosed Drawing only.</p> <p>4. Delivery Terms & Period - Door Delivery and within one month from the date of PO.</p> <p>5. Payment Terms - 100% direct payment after 45 days from the date of receipt and acceptance of materials by BHEL/SSSTP. Any deviation in the above payment term will attract loading @ Prime lending rate of SBI (as applicable on the date of tender opening) + 6% for the period of relaxation sought by suppliers.</p> | | | | |
| Indent Details | | | | |

IMPORTANT NOTE:

1. Delivery Terms : "Free Delivery at BHEL-SSSTP STORES" is preferable.
2. Payment Terms : 100% payment within 45days after receipt and acceptance of materials by BHEL"
3. Terms and Conditions of Tender : Please see reverse.
4. The Technical Requirements / Specification Details / Quality Requirements/Commercial Terms & Conditions are clearly furnished in the Tender. If Deviation(s) is/are not explicitly brought out in the Offer, it will be construed that the Tenderer is complying with the requirement of BHEL in full without any deviation(s).

For and on behalf of
BHARAT HEAVY ELECTRICALS LTD.

[Signature]
 23/01/14

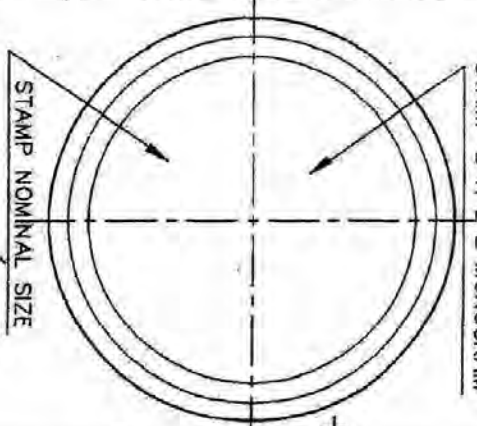
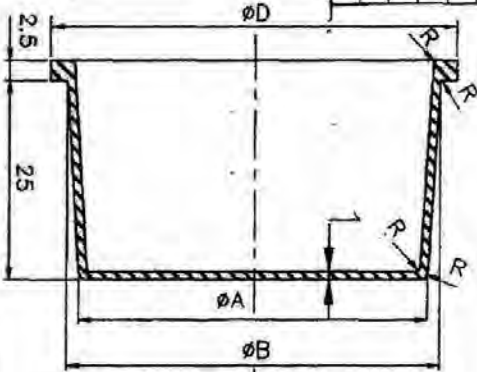
PURCHASE EXECUTIVE

ALL DIMENSIONS ARE IN MILLIMETERS

| SL No | NOM. SIZE | A | B | D |
|-------|-----------|------|------|------|
| 01 | 10 | 8.5 | 11.5 | 15.5 |
| 02 | 11 | 9.5 | 12.5 | 16.5 |
| 03 | 12 | 10.5 | 13.5 | 17.5 |
| 04 | 13 | 11.5 | 14.5 | 18.5 |
| 05 | 14 | 12.5 | 15.5 | 19.5 |
| 06 | 15 | 13.5 | 16.5 | 20.5 |
| 07 | 16 | 14.5 | 17.5 | 21.5 |
| 08 | 17 | 15.5 | 18.5 | 22.5 |
| 09 | 18 | 16.5 | 19.5 | 23.5 |
| 10 | 19 | 17.5 | 20.5 | 24.5 |
| 11 | 20 | 18.5 | 21.5 | 25.5 |
| 12 | 21 | 19.5 | 22.5 | 26.5 |
| 13 | 22 | 20.5 | 23.5 | 27.5 |
| 14 | 23 | 21.5 | 24.5 | 28.5 |
| 15 | 24 | 22.5 | 25.5 | 29.5 |
| 16 | 25 | 23.5 | 26.5 | 30.5 |
| 17 | 26 | 24.5 | 27.5 | 31.5 |
| 18 | 27 | 25.5 | 28.5 | 32.5 |
| 19 | 28 | 26.5 | 29.5 | 33.5 |
| 20 | 29 | 27.5 | 30.5 | 34.5 |
| 21 | 30 | 28.5 | 31.5 | 35.5 |
| 22 | 31 | 29.5 | 32.5 | 36.5 |
| 23 | 32 | 30.5 | 33.5 | 37.5 |
| 24 | 33 | 31.5 | 34.5 | 38.5 |
| 25 | 34 | 32.5 | 35.5 | 39.5 |
| 26 | 35 | 33.5 | 36.5 | 40.5 |
| 27 | 36 | 34.5 | 37.5 | 41.5 |
| 28 | 37 | 35.5 | 38.5 | 42.5 |
| 29 | 38 | 36.5 | 39.5 | 43.5 |
| 30 | 39 | 37.5 | 40.5 | 44.5 |
| 31 | 40 | 38.5 | 41.5 | 45.5 |
| 32 | 41 | 39.5 | 42.5 | 46.5 |
| 33 | 42 | 40.5 | 43.5 | 47.5 |
| 34 | 43 | 41.5 | 44.5 | 48.5 |
| 35 | 44 | 42.5 | 45.5 | 49.5 |
| 36 | 45 | 43.5 | 46.5 | 50.5 |
| 37 | 46 | 44.5 | 47.5 | 51.5 |
| 38 | 47 | 45.5 | 48.5 | 52.5 |
| 39 | 48 | 46.5 | 49.5 | 53.5 |
| 40 | 49 | 47.5 | 50.5 | 54.5 |
| 41 | 50 | 48.5 | 51.5 | 55.5 |
| 42 | 51 | 49.5 | 52.5 | 56.5 |
| 43 | 52 | 50.5 | 53.5 | 57.5 |
| 44 | 53 | 51.5 | 54.5 | 58.5 |
| 45 | 54 | 52.5 | 55.5 | 59.5 |

| SL No | NOM. SIZE | A | B | D |
|-------|-----------|------|-------|-------|
| 46 | 55 | 53.5 | 56.5 | 60.5 |
| 47 | 56 | 54.5 | 57.5 | 61.5 |
| 48 | 57 | 55.5 | 58.5 | 62.5 |
| 49 | 58 | 56.5 | 59.5 | 63.5 |
| 50 | 59 | 57.5 | 60.5 | 64.5 |
| 51 | 60 | 58.5 | 61.5 | 65.5 |
| 52 | 61 | 59.5 | 62.5 | 66.5 |
| 53 | 62 | 60.5 | 63.5 | 67.5 |
| 54 | 63 | 61.5 | 64.5 | 68.5 |
| 55 | 64 | 62.5 | 65.5 | 69.5 |
| 56 | 65 | 63.5 | 66.5 | 70.5 |
| 57 | 66 | 64.5 | 67.5 | 71.5 |
| 58 | 67 | 65.5 | 68.5 | 72.5 |
| 59 | 68 | 66.5 | 69.5 | 73.5 |
| 60 | 69 | 67.5 | 70.5 | 74.5 |
| 61 | 70 | 68.5 | 71.5 | 75.5 |
| 62 | 71 | 69.5 | 72.5 | 76.5 |
| 63 | 72 | 70.5 | 73.5 | 77.5 |
| 64 | 73 | 71.5 | 74.5 | 78.5 |
| 65 | 74 | 72.5 | 75.5 | 79.5 |
| 66 | 75 | 73.5 | 76.5 | 80.5 |
| 67 | 76 | 74.5 | 77.5 | 81.5 |
| 68 | 77 | 75.5 | 78.5 | 82.5 |
| 69 | 78 | 76.5 | 79.5 | 83.5 |
| 70 | 79 | 77.5 | 80.5 | 84.5 |
| 71 | 80 | 78.5 | 81.5 | 85.5 |
| 72 | 81 | 79.5 | 82.5 | 86.5 |
| 73 | 82 | 80.5 | 83.5 | 87.5 |
| 74 | 83 | 81.5 | 84.5 | 88.5 |
| 75 | 84 | 82.5 | 85.5 | 89.5 |
| 76 | 85 | 83.5 | 86.5 | 90.5 |
| 77 | 86 | 84.5 | 87.5 | 91.5 |
| 78 | 87 | 85.5 | 88.5 | 92.5 |
| 79 | 88 | 86.5 | 89.5 | 93.5 |
| 80 | 89 | 87.5 | 90.5 | 94.5 |
| 81 | 90 | 88.5 | 91.5 | 95.5 |
| 82 | 91 | 89.5 | 92.5 | 96.5 |
| 83 | 92 | 90.5 | 93.5 | 97.5 |
| 84 | 93 | 91.5 | 94.5 | 98.5 |
| 85 | 94 | 92.5 | 95.5 | 99.5 |
| 86 | 95 | 93.5 | 96.5 | 100.5 |
| 87 | 96 | 94.5 | 97.5 | 101.5 |
| 88 | 97 | 95.5 | 98.5 | 102.5 |
| 89 | 98 | 96.5 | 99.5 | 103.5 |
| 90 | 99 | 97.5 | 100.5 | 104.5 |

| SL No | NOM. SIZE | A | B | C |
|-------|-----------|-------|-------|-------|
| 91 | 100 | 98.5 | 101.5 | 105.5 |
| 92 | 101 | 99.5 | 102.5 | 106.5 |
| 93 | 102 | 100.5 | 103.5 | 107.5 |
| 94 | 103 | 101.5 | 104.5 | 108.5 |
| 95 | 104 | 102.5 | 105.5 | 109.5 |
| 96 | 105 | 103.5 | 106.5 | 110.5 |
| 97 | 106 | 104.5 | 107.5 | 111.5 |
| 98 | 107 | 105.5 | 108.5 | 112.5 |
| 99 | 108 | 106.5 | 109.5 | 113.5 |
| 100 | 109 | 107.5 | 110.5 | 114.5 |
| 101 | 110 | 108.5 | 111.5 | 115.5 |
| 102 | 111 | 109.5 | 112.5 | 116.5 |
| 103 | 112 | 110.5 | 113.5 | 117.5 |
| 104 | 113 | 111.5 | 114.5 | 118.5 |
| 105 | 114 | 112.5 | 115.5 | 119.5 |
| 106 | 115 | 113.5 | 116.5 | 120.5 |
| 107 | 116 | 114.5 | 117.5 | 121.5 |
| 108 | 117 | 115.5 | 118.5 | 122.5 |
| 109 | 118 | 116.5 | 119.5 | 123.5 |
| 110 | 119 | 117.5 | 120.5 | 124.5 |
| 111 | 120 | 118.5 | 121.5 | 125.5 |
| 112 | 9 | 7.5 | 10.5 | 13.5 |



MATERIAL: VIRGIN QUALITY WHITE LDPE TO IS: 3389
HARDNESS : 80 TO 90° SHORE A

| | | | | | |
|--|----------------------------|---|---|-------------------------|-----------------|
| | | Bharat Heavy Electricals Ltd SEAMLESS STEEL TUBE PLANT TIRUCHIRAPPALLI - 620014 | | DEN NAME R. KUMAR | DATE 13.7.95 |
| DEPT T E | GRADE OF UNITS C/M/F | SCALE N T S | WEIGHT(S) APPRO P. GANESAN | SIGNATURE | REV 001 |
| TITLE INTERNAL END PLUG (FOR FINISHED TUBE) | | | DRAWING NO : 30-ST-999.00-389 | REV 001 | |

Annexure-A

Important Note to Tenderers

This Tender is floated on TWO-BID System. Tenders are requested to submit their offers in TWO-BIDS (Part I: Un priced bid and Part II: Price Bid) separately in a sealed cover as follows.

1. **Part I: UN PRICED BID:** (Complete with technical & Commercial conditions as per enquiry including un priced copy of price schedule i.e. identical to part II with prices blanked and replaced by "Quoted")
The Tenderer should confirm their acceptance / comments to each and every clause of Annexure-A to Enquiry along with other commercial Terms & Conditions of Tender. In case any deviation is taken by the Tenderer from the Tender requirements, it is to be clearly indicated in the offer with reference to the particular clause. If such deviations are not explicitly indicated in the offer, it will be construed by BHEL that the Tenderer is complying with Annexure Clause(s), Commercial terms & conditions and other conditions in full. Any such non-compliance on these points, if raised / highlighted by the Tenderer, after opening the Price Bid, it will not be accepted by BHEL and the tender evaluation will be done based on the original offer submitted by them.
2. **Part II: PRICE BID:** Price (with break-up details wherever required) alone to be indicated. Price bid shall **not** contain any technical and commercial details.
3. **Both Un priced Bid and Price Bid is** to be submitted in a single envelop before 14.00 hours (Indian Time) on tender Due Date.
4. The **Unpriced Bid** shall be put in a separate sealed cover superscribed with Tender number, Tender Date & Tender Due Date and also the cover should be clearly marked with "**UNPRICED BID**".
5. The **Price Bid** shall be put in a separate sealed cover superscribed with Tender number, Tender Date & Tender Due Date & the cover should be clearly marked with "**PRICE BID**".
6. Both the individually enveloped **UNPRICED BID** and **PRICE BID** covers as mentioned above, have to be put in another single bigger cover clearly indicating Tender number, Tender Date & Tender Due Date at the top of the cover. This cover is to be addressed to Purchase Executive, Purchase Department, Seamless Steel Tube Plant (SSTP), BHEL, Tiruchirapalli-620014, India.
7. Unpriced Bid shall only be opened on the Tender Due Date mentioned in the Tender, in the presence of Tenderers / their Authorized Representative, who may like to be present for such opening. **The price bid will NOT be opened on the date of tender opening.**
8. After opening the Unpriced Bid, they shall be evaluated by BHEL for their suitability. BHEL shall hold discussions with the responded Tenderers on the Technical and Commercial terms and freeze the technical specifications. These frozen technical specifications will be communicated to responded tenderers.
9. BHEL shall offer opportunity to the responded and technically / commercially suitable Tenderers, to submit their latest Price Bid in line with the frozen technical delivery conditions.
10. This latest Price Bid for the frozen technical specifications submitted by the Tenderers will be opened in the presence of those Tenderers who have submitted the latest Price Bid. Based on the latest Price Bid only, the ranking of the Tenderers shall be made and accordingly the Tender shall be finalized.