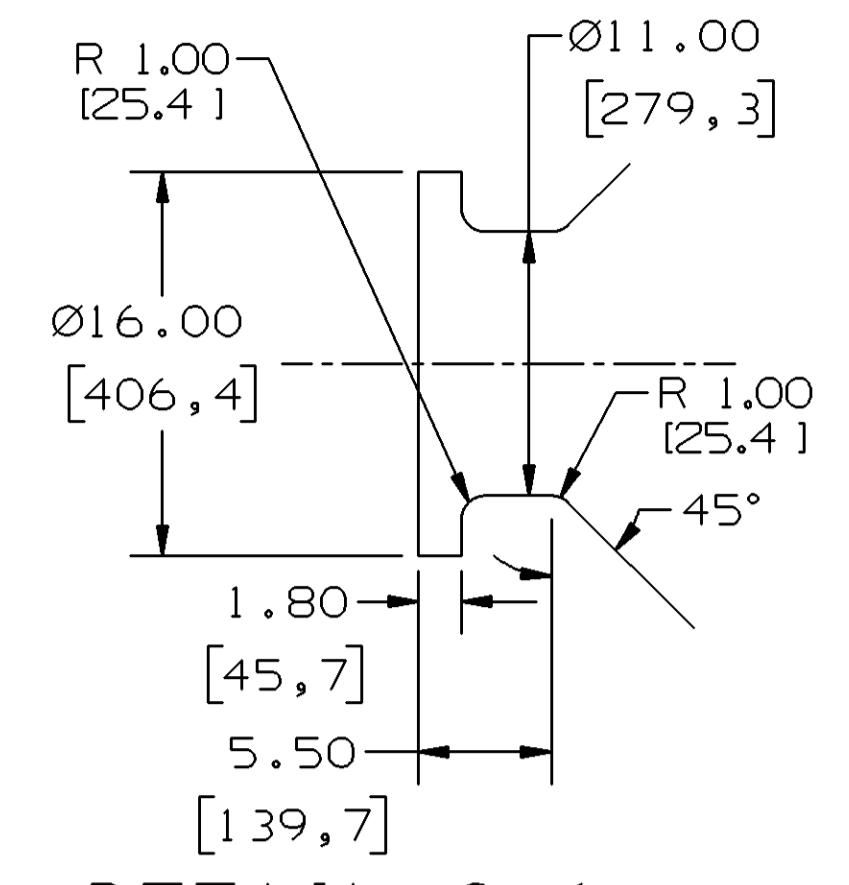


REV	DESCRIPTION	DATE	APPROVED

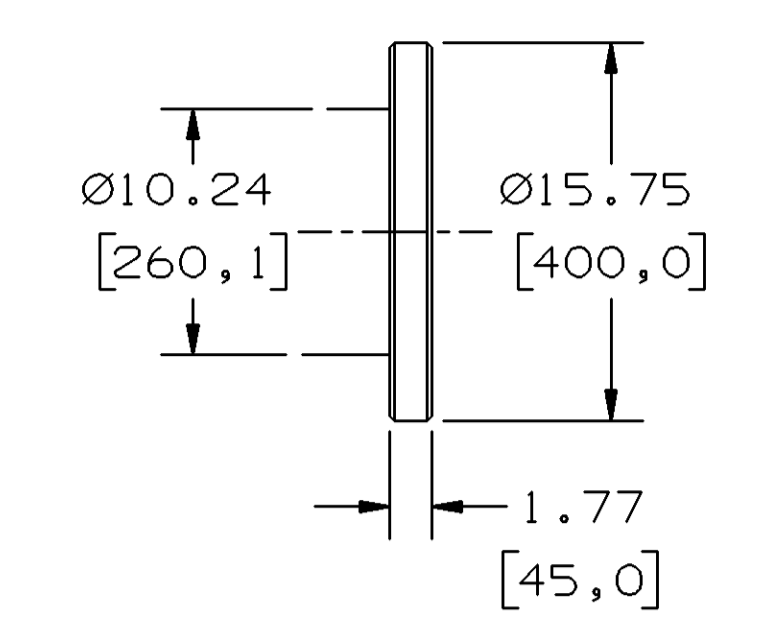
REVISE ON CAD ONLY
 UG PART: GR1105-0408-P0002
 (SPEC: 141E1217)

NOTES:

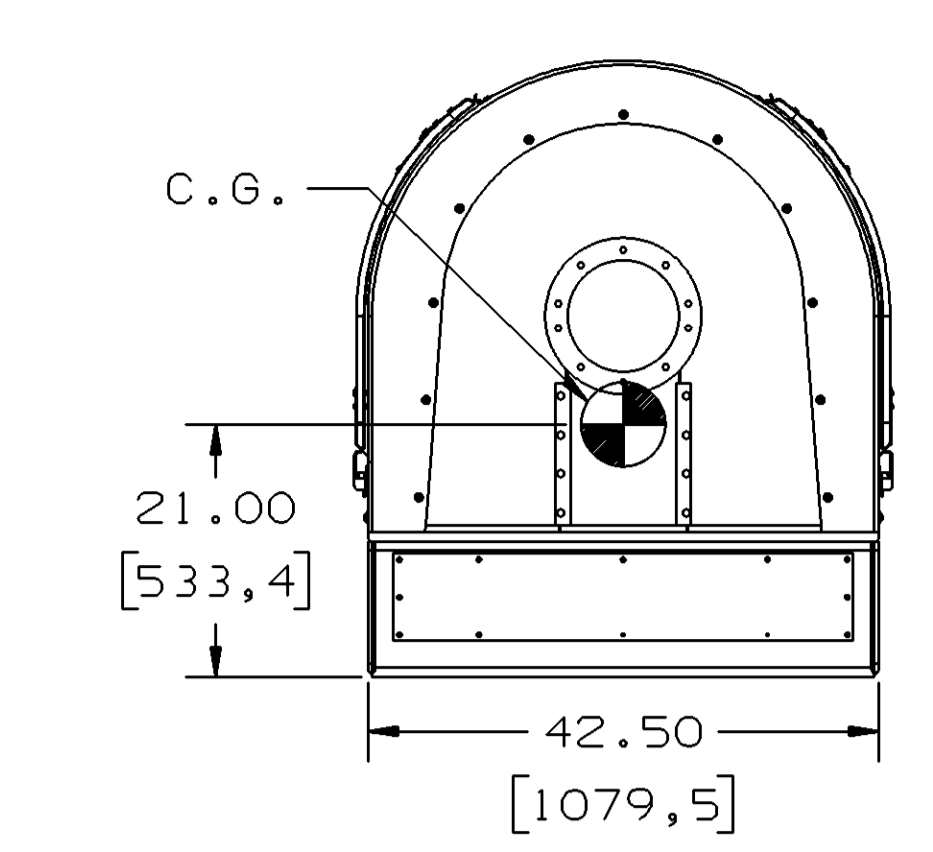
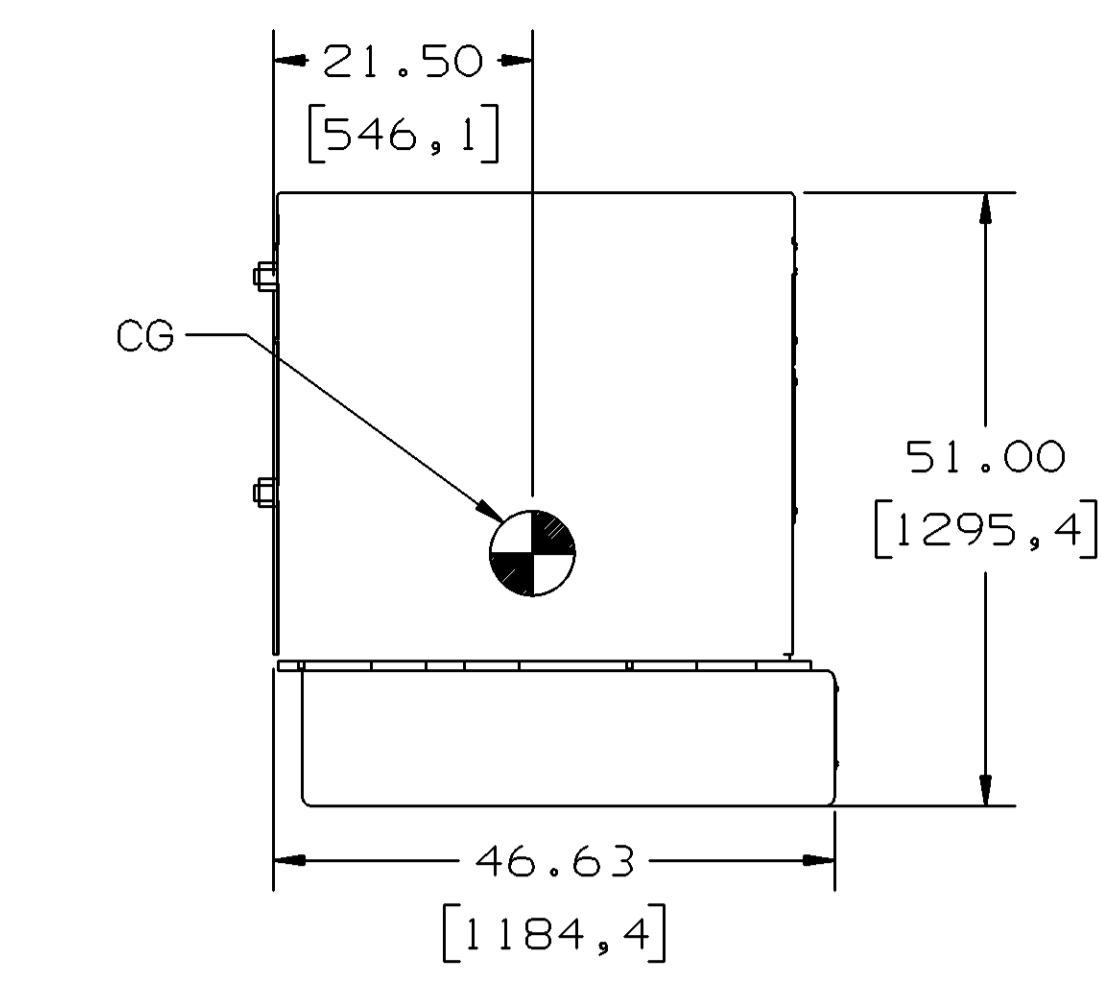
- ALL WEIGHTS AND CG'S ARE APPROXIMATE. THE CENTER OF GRAVITY IS TO BE STENCILED ON THE TURBINE UNIT BASE BEAM. *FOR REFERENCE ONLY*. LOCATION MAY DEVIATE BY ±5.00 [127,0]
- TRUNNIONS MARKED "A" TO BE USED FOR LIFTING COMPLETE GAS TURBINE
- SEE WT & CG GAS TURBINE (MLI 0407) FOR FWD EXHAUST DIFFUSER (0706) WEIGHT & CG.
- SEE OUTLINE, MECH GTRB & LOAD (MLI 0306) FOR ORIENTATION OF COMPONENTS.
- SEE WT & CG GAS TURBINE (MLI 0407) FOR COMPONENT BREAKDOWN OF THE TURBINE ENGINE.
- ALL DIMENSIONS ARE IN INCHES, UNLESS OTHERWISE SPECIFIED. DIMENSIONS IN [] ARE IN MILLIMETERS.
- USE A SPREADER BAR LIFTING DEVICE WHEN APPLICABLE TO AVOID DAMAGE TO GE CO. COMPONENTS WHEN LIFTING.
- CABLES, SLINGS, TURNBUCKLES, SPREADER BARS AND ANCHOR SHACKLES ARE NOT SUPPLIED BY GE CO.
- GAS TURBINE SHIPPING ENVELOPE INCLUDES REQUIRED ENVELOPE FOR PIPING/COMBUSTION COMPONENTS NOT SHOWN.
- SEE ML ITEM EG26 FOR VENT FAN DETAILS.
- COMBUSTION NOZZLE MODULES FOR 9FA'S AND 9FB'S ARE NOT INSTALLED PRIOR TO SHIPMENT. THE COMBUSTION MODULES ARE SHIPPED SEPARATELY, DUE TO SPACE RESTRICTIONS IN TRANSIT, AND ARE INSTALLED AFTER ARRIVING IN THE FIELD. REFER TO MLI 0407 FOR LIFTING AND HANDLING INFORMATION.



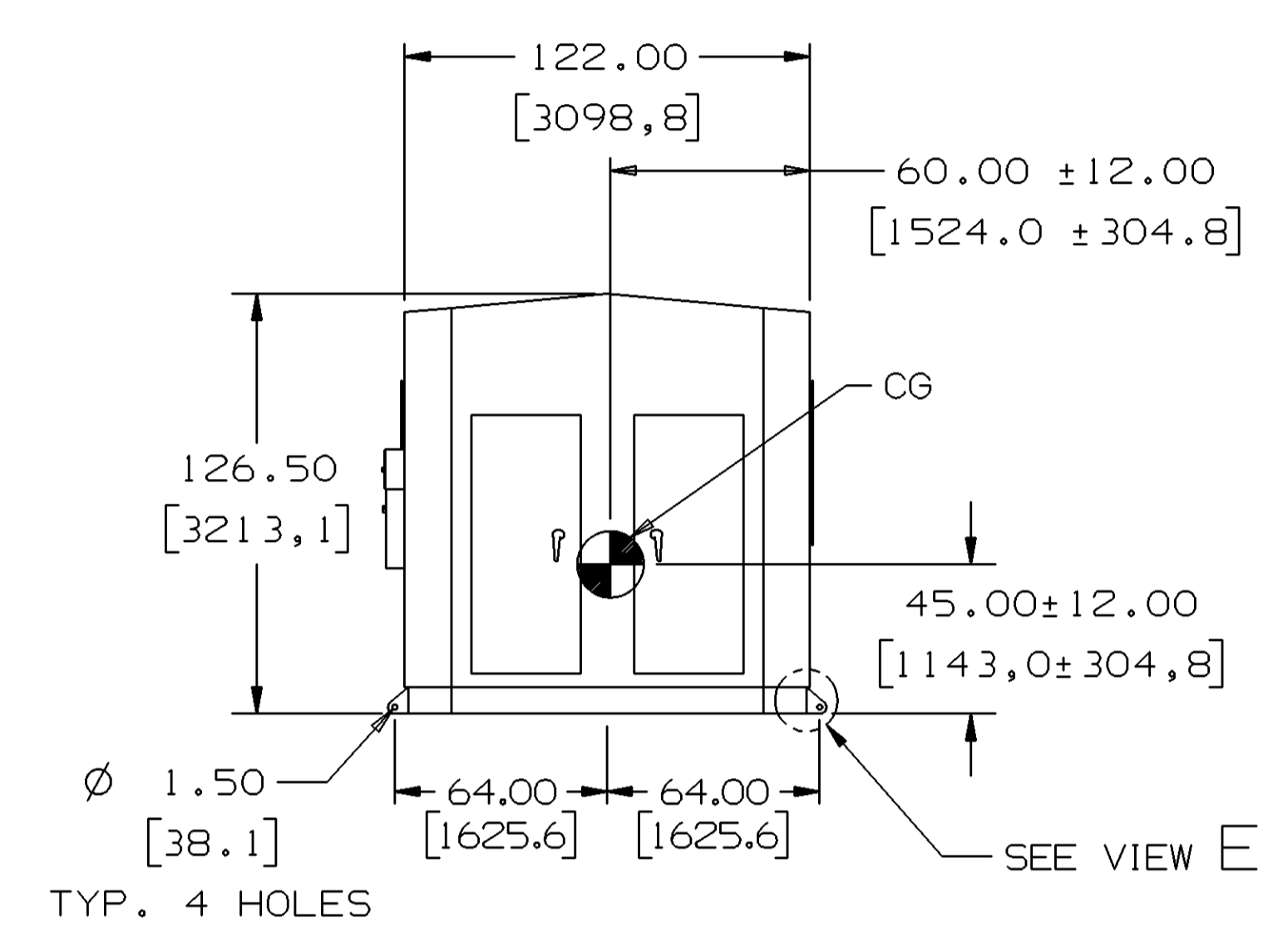
DETAIL G-6 (B-8)
TRUNNION DETAIL
COMPRESSOR END



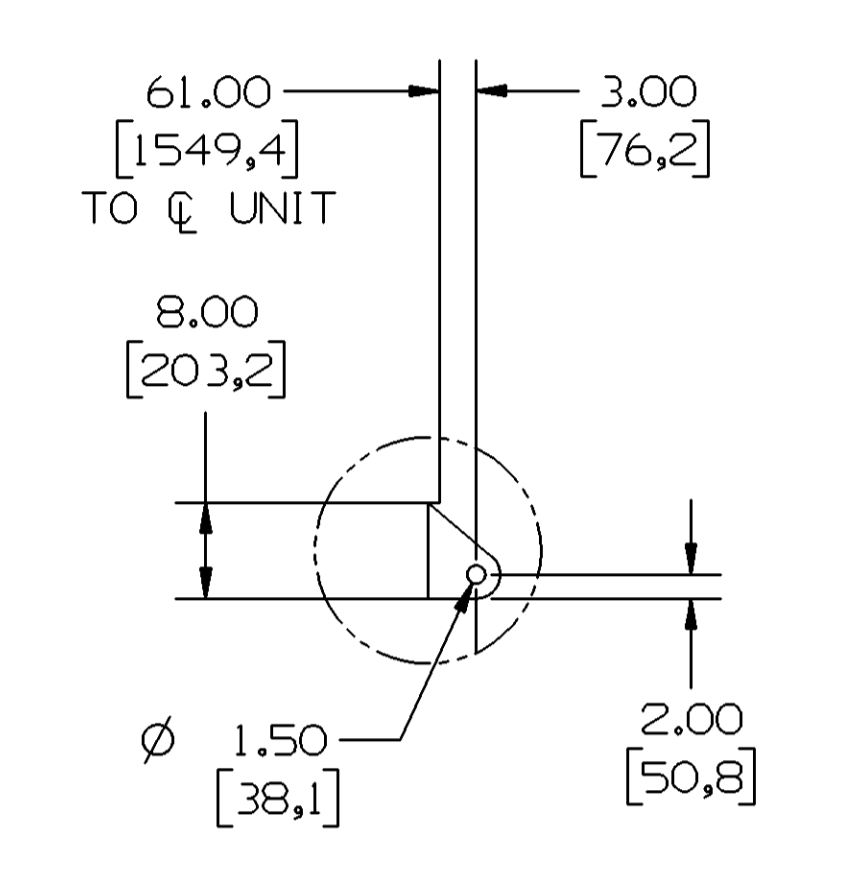
DETAIL G-5 (B-7)
TRUNNION DETAIL
EXHAUST END



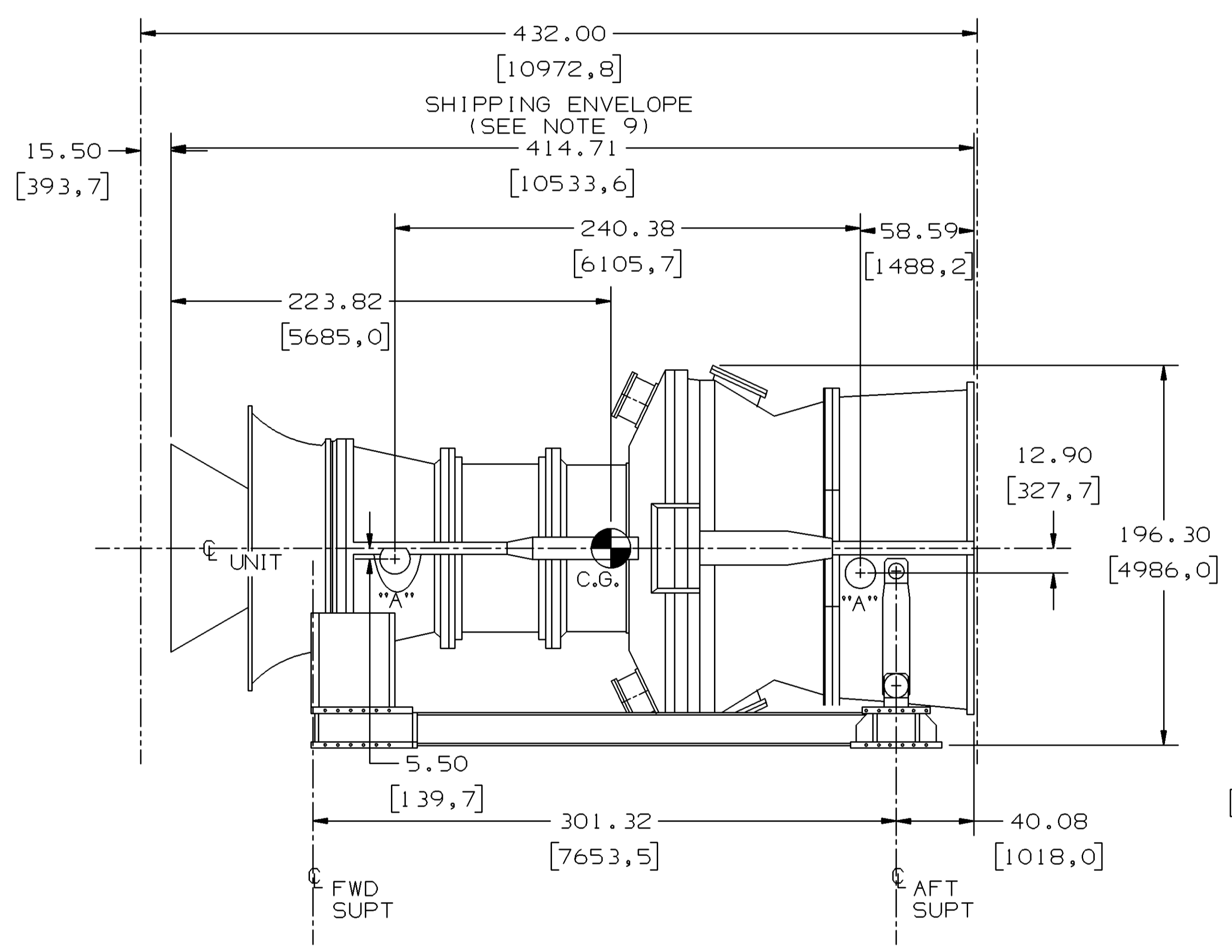
COLLECTOR HSG & BASE
APPROXIMATE WEIGHT
2,400 LBS [1089,0 KG]



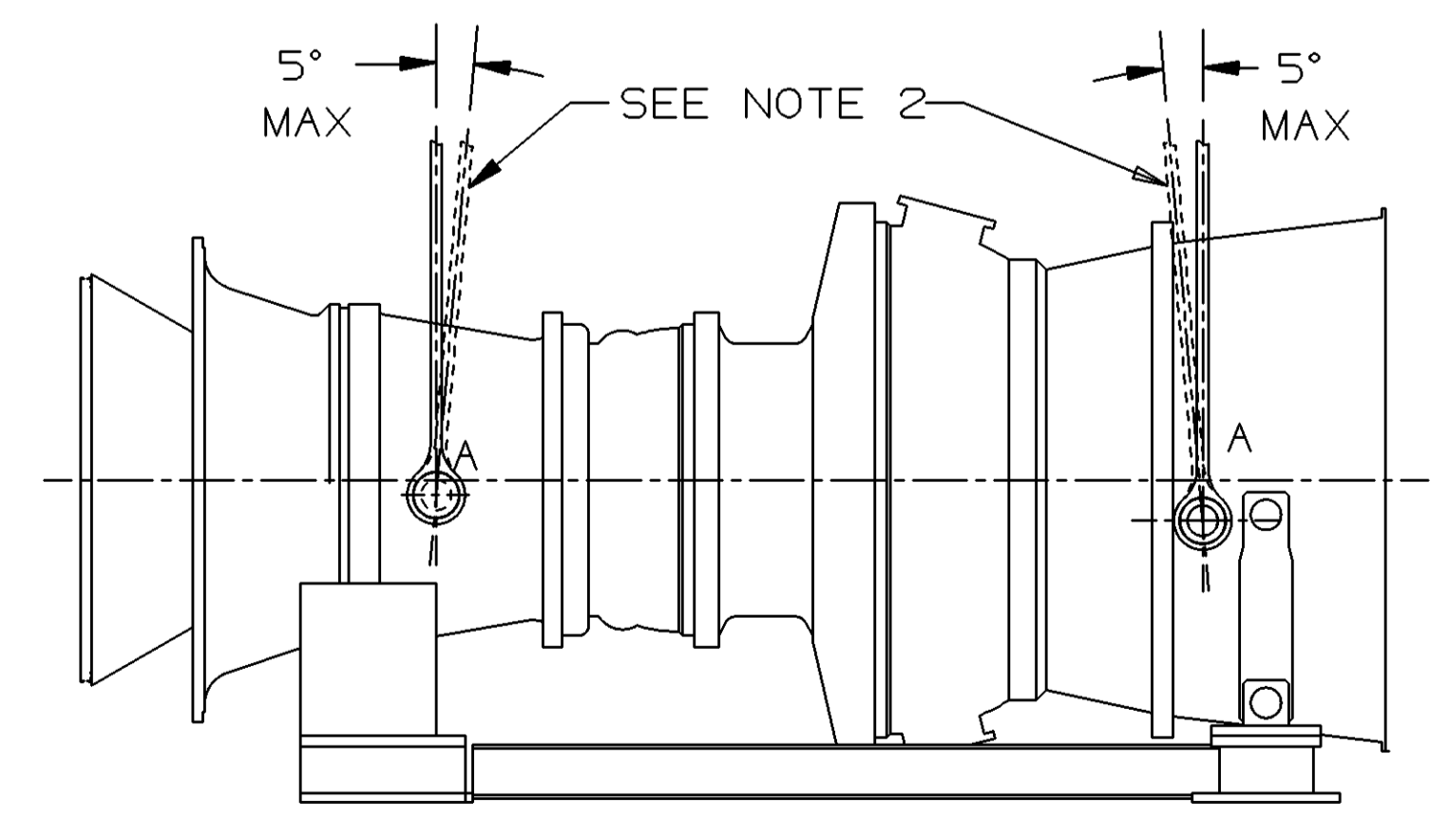
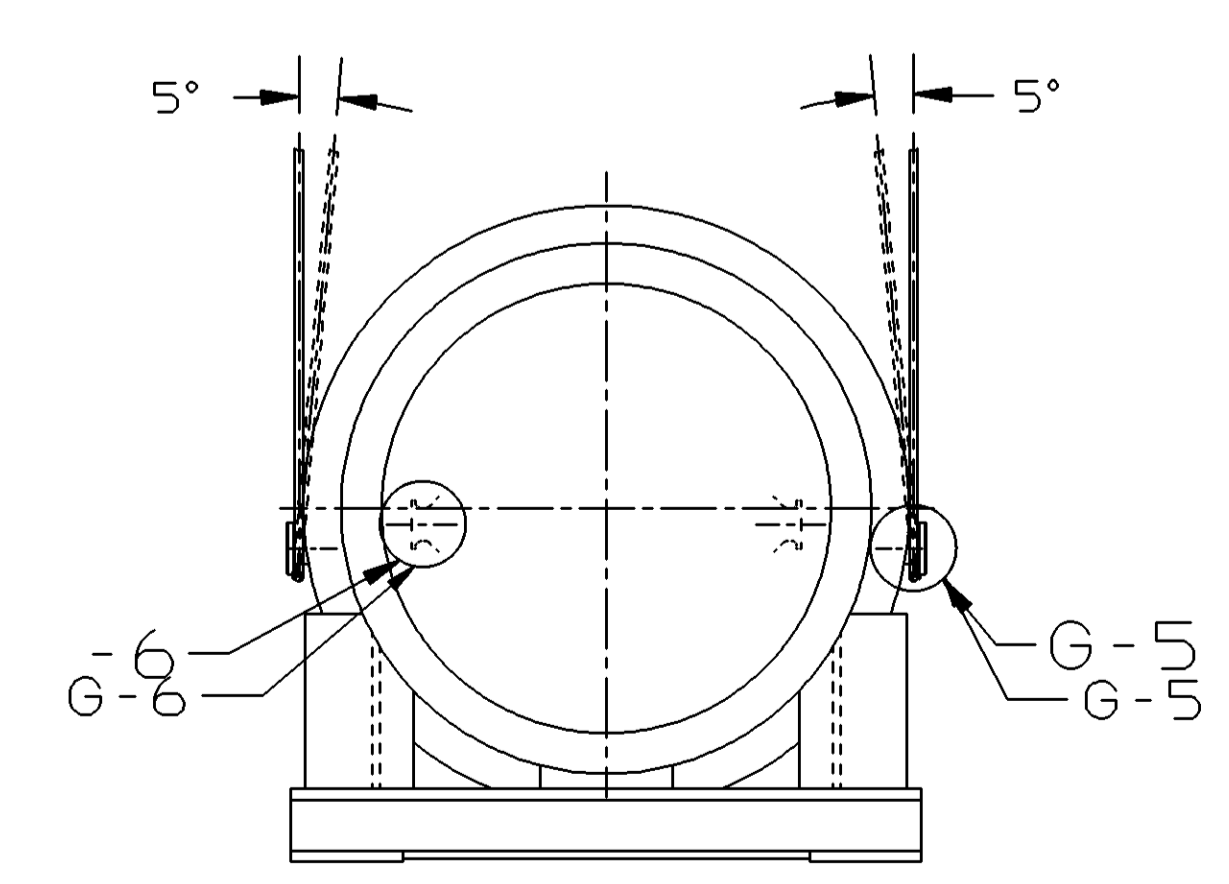
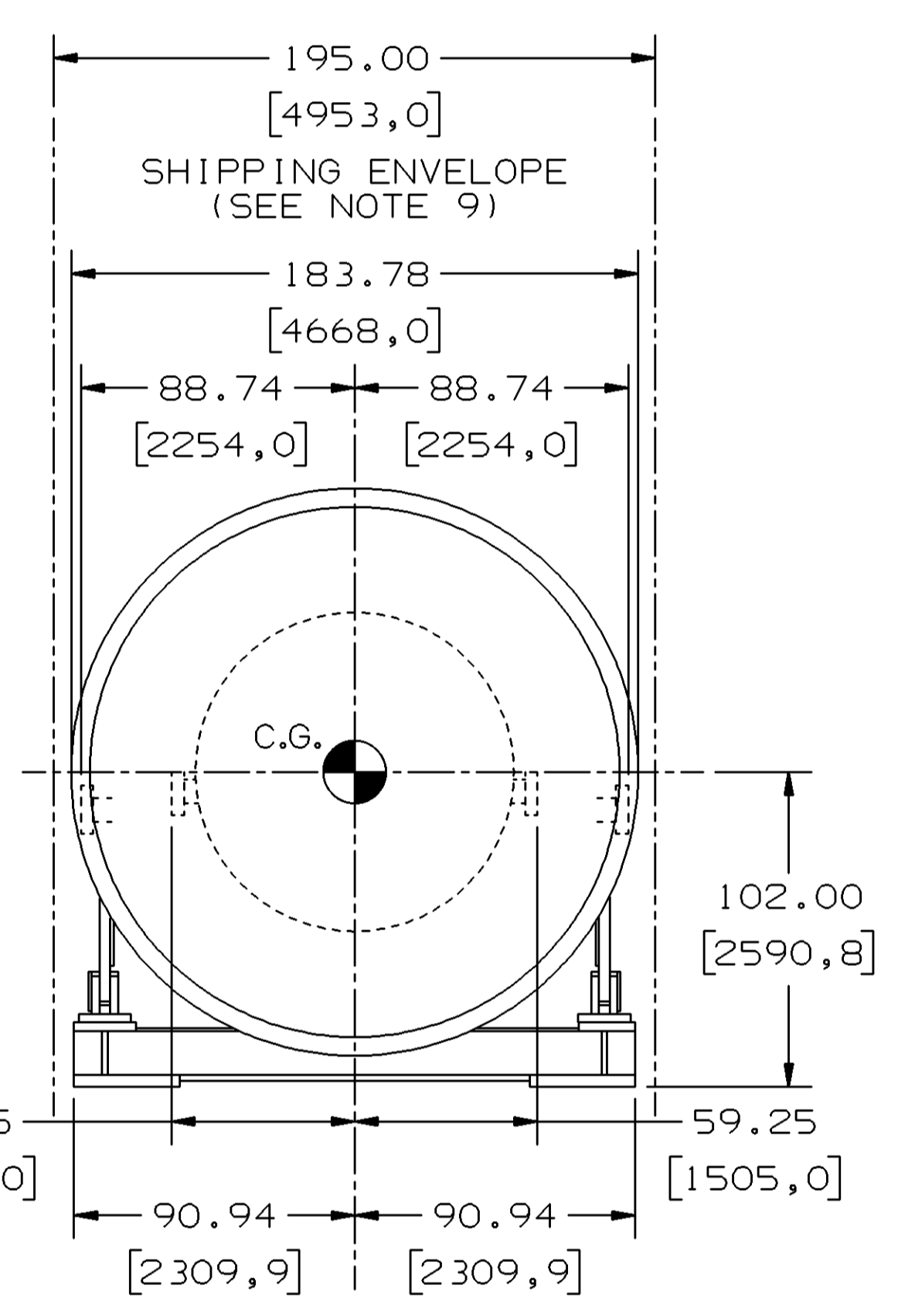
GENERATOR TERMINAL ENCLOSURE
APPROXIMATE WEIGHT (DRY)
21,000 LBS [9525 KG]



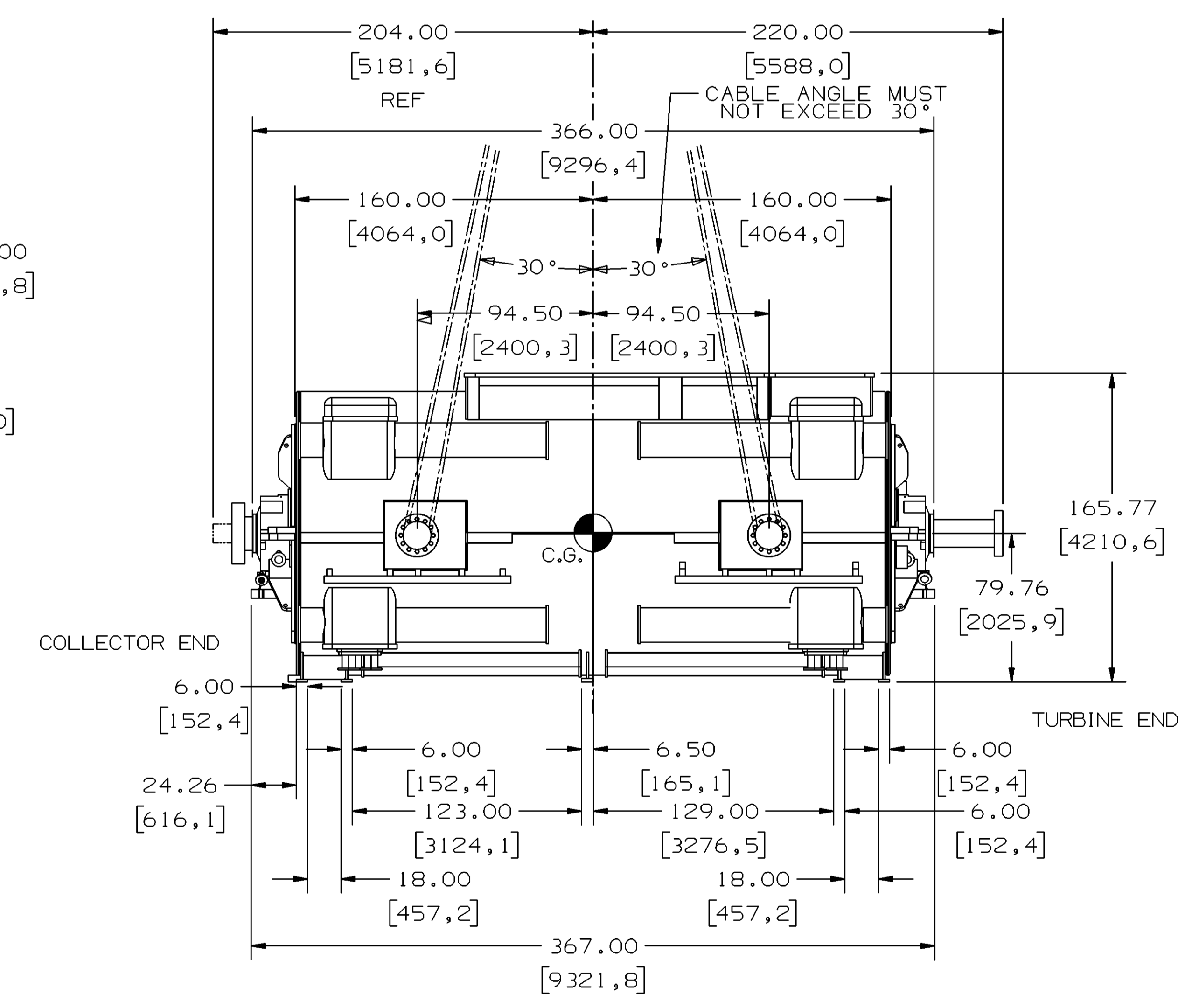
VIEW E-1 (E-3)
LIFTING TRUNNION
4 PLACES



GAS TURBINE
APPROXIMATE WEIGHT 635,080 LBS [288,000 KG]
(PIPING/COMBUSTION NOT SHOWN)



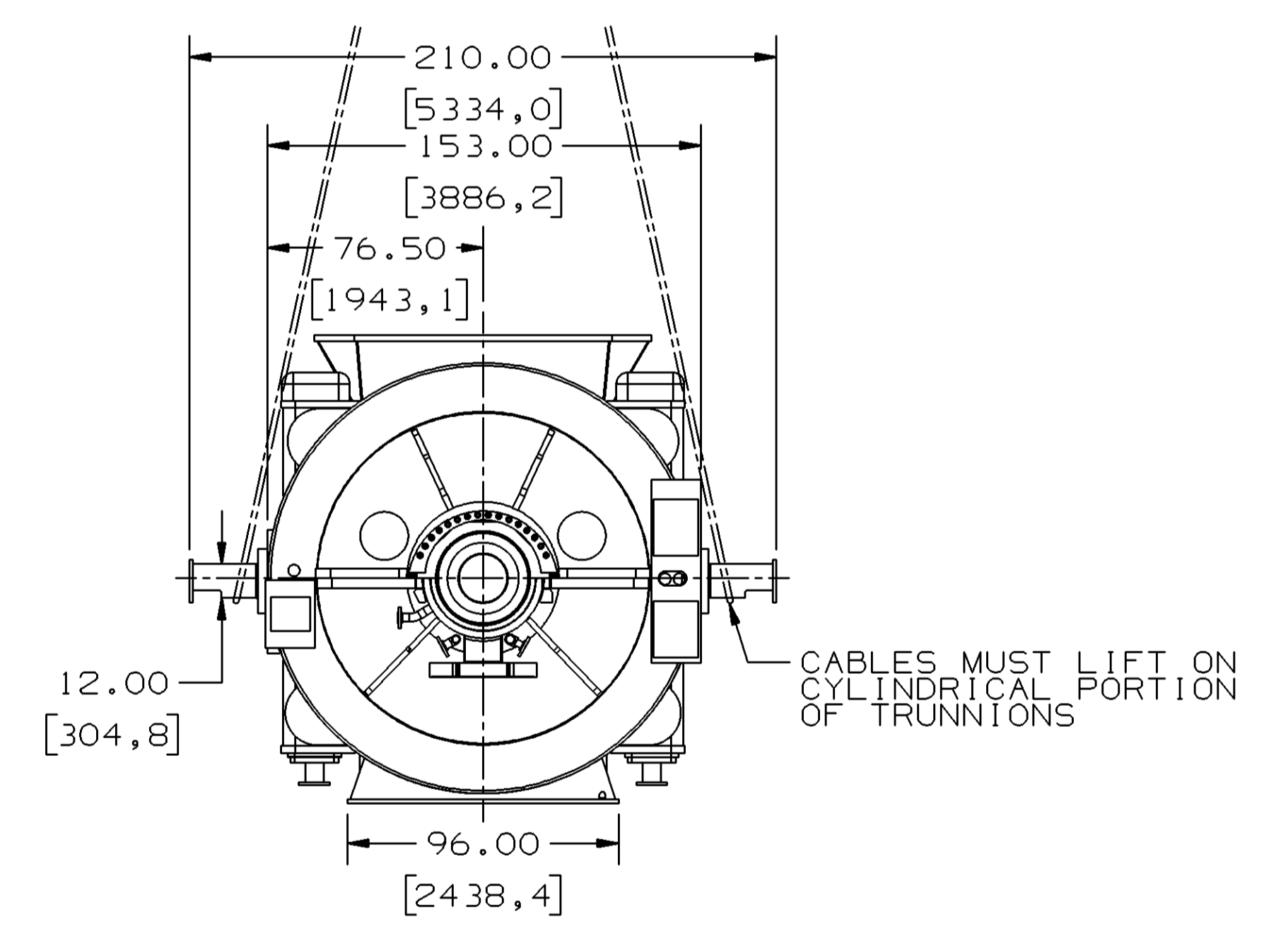
(PIPING/COMBUSTION SYSTEM NOT SHOWN)



GENERATOR

APPROXIMATE WEIGHTS

COLLECTOR HOUSE & BRUSH RIGGING.....	3,200 LB	1,452 KG
COOLERS (4) EMPTY.....	10,000 LB	4,535 KG
ROTOR.....	101,000 LB	45,813 KG
END SHIELDS (2).....	35,000 LB	15,876 KG
STATOR ASSEMBLY (INCLUDES PUNCHINGS.....)	465,500 LB	211,147 KG
FLANGES, FEET, INSIDE GAS SHIELDS & WINDINGS		
TOTAL GENERATOR ASSEMBLY.....	613,700 LB	278,374 KG



UNLESS OTHERWISE SPECIFIED	SIGNATURES	DATE	GE Power Generation
DIMENSIONS ARE IN INCHES TOLERANCES UNLESS OTHERWISE SPECIFIED: 2 PL. DECIMALS ± -- 3 PL. DECIMALS ± -- ANGLES ± -- FRACTIONS ± --	DRAWN SETHIL P. CHECKED PADMA ENGR EDGAR SANTILLAN ISSUED N.T. PANDIAN	07-07-31 07-07-31 07-08-01 07-08-02	GENERAL ELECTRIC COMPANY GAS TURBINE GREENVILLE, SC
APPLIED PRACTICES 34BA9200			
SIM TO: 139E6223			

OUTLINE, WEIGHT & CG
GAS TURBINE & GEN PKG

FIRST MADE FOR ML-9G1WFA105-1T2 0408
 SIZE/SCALE CODE: E
 DWG NO: 141E1217
 SCALE: NONE
 SHEET: 1

© COPYRIGHT 2007 GENERAL ELECTRIC COMPANY
 PROPRIETARY INFORMATION-THIS DOCUMENT CONTAINS PROPRIETARY INFORMATION OF GENERAL ELECTRIC COMPANY AND MAY NOT BE USED OR DISCLOSED TO OTHERS, EXCEPT WITH THE WRITTEN PERMISSION OF GENERAL ELECTRIC COMPANY.

