



Boiler Auxiliary Plant , Bharat Heavy Electricals
Limited , Ranipet Tamilnadu- 632406

Purchase Department

Enquiry No : BAP/PUR/PB/9530119E dt.17.05.2013

Item : Plain Bearing

Synopsis :

(i) Annexure-I

- (a) Part-A : Item description and quantity details
- (b) Part-B : General terms and conditions of enquiry
- (c) Part-C : Reverse Auction terms and conditions
- (d) Part-D : Quantity Split terms and conditions
- (e) Part-E : Cover Details
- (f) Part-F : Plain Bearing Drawing

(ii) Annexure-II : Supplier Registration Form (SRF)

(iii) Annexure-III : Commercial terms and conditions and MSME condition , CA certificate format.

Contact Details

Shri . Samiulla Sheriff J
Manger/Purchase
Email : jssheriff@bhelrpt .co.in
Phone : 04172- 284621
Fax : 04172-241131

Shri . Biswajit Rath
Engineer / Purchase
Email : biswajit@bhelrpt.co.in
Phone : 04172-284007
Fax : 04172-241131

Annexure-I

Enquiry No : BAP/PUR/PB/ 9530119E dt.17.05.2013

Part -A

Item description and quantity details

SI No	Material Code , Description and specification	Unit	Quantity
01	Plain Bearing As Per Drg : 6172-0066 / 01 , Test Certificate Verification For Hardness and Dimensional Inspection , For Machined Surface Temporary Rust Preventive Oil Min DFT = 20 Micron , Other Surfaces Red Oxide Zinc Chrome Primer To IS 2074 Min DFT=25 Micron , Synthetic Enamel Finish Paint To IS 2932 MIN DFT=20 Micron (Shade : Smoke Grey)	No	35000

Annexure-I

Enquiry No : BAP/PUR/PB/ 9530119E dt.17.05.2013

Part- B

General Terms and Conditions

1. Tender shall be submitted in **two parts**. Part-1 shall consist of Technical and all commercial terms without price . Part-2 shall consist only price bid. Both bids shall be submitted in separate covers sealed and superscribing **Enquiry no , Due date and Technical Bid / Price Bid as shown in Part-E** (Page#09 & 10). Please submit SRF (Annexure-II) along with techno-commercial offer in a separate sealed cover (cover format should be as per **Part-E** (Page#11)) and SRF should be kept inside techno-commercial offer. Please submit techno-commercial offer (including SRF) and price bid under one main cover as per format shown **part -E** (Page#08).
2. Techno- commercial bid will be opened first , evaluated and only then the price bids of qualified suppliers will be opened. This enquiry shall be subject to jurisdiction of the courts at Ranipet , Vellore District , Tamilnadu.
3. Any revised offer (s) sent by vendors on their own , after the tender opening will be treated as "Unsolicited Offer". Such offers will not be considered and necessary action as deemed fit will be taken by BHEL on those vendors. Hence , competitive offer to be given in the original offer itself.
4. Tender should be sent in duplicate in a **sealed cover**. Inner cover sealed with tenderer's distinctive seal and superscribed with correct **tender no , item of supply , due date of opening** and validity of offer addressed by designation to Manager/Purchase , Bharat Heavy Electricals Limited , Boiler Auxiliaries Plant , Indira Gandhi Complex , Ranipet , Vellore District-632406 , India.
5. Point wise confirmation required for material description , specification and quantity as indicated in part-A of Annexure-I.
6. Commercial terms and conditions Annexure-III is to be submitted along with technical offer. It should be filled in all respect.
7. Unpriced Bid (Price bid without price) is to be submitted along with techno-commercial offer.
8. Please submit your quotation so as to reach us on or before the due date by **2:00 PM**. Offers received after 2:00 PM at purchase department on the due date will be considered as late offer and may be liable for rejection. Quotations will be opened at **2:30 PM** at purchase department on the due date in presence of the tenderers who may like to be present.
9. **Authorization Letter** : Such of those tenderers who wish to participate in "tender opening" should attach an authorization letter which shall be duly signed and stamped in original , identifying the representative to be deputed for tender opening.

10. All tenderers are requested to submit SRF "Supplier Registration Form (SRF)" as per Annexure-II along with "techno-commercial offer" for our records and further separate action.

11. All tenderers are requested to submit the CA certificate indicating the present MSME status of their enterprise in the format attached (Annexure-III , Page: 04) along with techno-commercial offer. It is also requested to attach the SSI certificate along with CA certificate and submit along with techno-commercial offer.

Annexure-I

Enquiry No : BAP/PUR/PB/ 9530119E dt.17.05.2013

Part-C

The tender will be processed through processed through “**Reverse Auction**” . Please refer below for terms and conditions of reverse auction .

1. For the proposed reverse auction, technically and commercially acceptable bidders only shall be eligible to participate.
2. BHEL will engage the services of a service provider who will provide all necessary training and assistance before commencement of on line bidding on Internet.
3. BHEL will inform the vendor in writing, in case of reverse auction, the details of service provider to enable them to contact and get trained.
4. Business rules like event date, time, start price, bid decrement, extensions, etc. also will be communicated through service provider for compliance.
5. Vendors have to fax the compliance form in the prescribed format (provided by service provider) before start of Reverse auction. Without this the vendor will not be eligible to participate in the event.
6. BHEL will provide the rate schedule (e.g. EXCEL sheet) for the vendor to enable them to fill-in the price and keep it ready for keying in during the auction. In the event of discrepancy in rate and amount against any item of work, the least of the two will be taken for bid price. In case of discrepancy between the total price indicated in price bid and the arithmetic sum arrived based on rate quoted, then also the least of the two will be taken for the bid price. The bids are compared on the total price quoted and NOT on individual ITEM of works.
7. Reverse auction will be conducted on scheduled date & time.
8. At the end of reverse auction event, the lowest bidder value will be known on the network.
9. The lowest bidder has to fax the duly signed filled-in prescribed format as provided on case-to-case basis to BHEL through Service provider within 24 hours of auction without fail.
10. Opening bid in reverse Auction: The opening bid (in the reverse Auction) of the bidders shall be same as that quoted in their final sealed price submitted to BHEL(along with Technical offer). The bidder shall confirm in writing to BHEL that their opening bid (in reverse auction) shall be same as that quoted in their final sealed price bids submitted to BHEL against this NIT along with Technical Bid (Part-1).**If any bidder offered a unsolicited discount or rebate, in separate cover etc. in any place other than the sealed price bid, then the opening price bid in reverse auction, by such a bidder in Reverse Auction, shall be the price offered in final sealed price bid submitted (against this NIT) minus discount offered in any place other than the sealed price bid.**

11. BHEL reserves the right to cancel Reverse Auction (RA) without assigning any reasons and resort to considering the sealed bids submitted by vendor for processing and finalizing the tender.
12. In case the process of reverse auction is found unsuccessful by BHEL, then BHEL at its discretion may decide to call the L1 bidder of reverse auction for further negotiation.
13. Any variation between the on-line bid value and signed document will be considered as sabotaging the tender process and will invite disqualification of vendor to conduct business with BHEL as per prevailing procedure.
14. In case BHEL decides not to go for Reverse auction procedure for this tender enquiry, the Price Bids and price impacts, if any already submitted and available with BHEL shall be opened as per BHEL's standard practice.
15. Only those vendors, who participate in the Online Initial Opening Bid, will be eligible to participate in the subsequent Online English Reverse Auction.
16. Price bids offered by the bidders during reverse auction process is considered as an offer to execute the work. Bids once made by a bidder cannot be cancelled/withdrawn and bidders shall be bound to execute the work at the final bid price. BHEL shall take appropriate action if the bidder fails to do so.
17. Cancellation of RA: Even where BHEL has specified Reverse Auction as the mode of competitive bidding in the tender enquiry, BHEL reserves the right to cancel the RA and go in for competitive sealed price bidding.

In that event, BHEL would intimate the acceptable offerors of the same in writing. The decision of BHEL to replace RA with competitive sealed bidding would be final and would be binding on all the technically qualified bidders. Such decision would be communicated to the technically successful bidders and BHEL is under no obligation to assign any reason for changing the mode of bidding from RA to sealed cover competitive bidding.

It shall be presumed that all bidders participating in this tender have read this condition and have accepted this, in submitting their offer.

Bidders would then given an opportunity to submit their reduction impact price bid if any, in sealed cover, which would be considered together with the price bids submitted along with the original/technical offer and other impact price bids if any arising out of changes in the technical scope. In case tenderers choose not to offer any reduction impact, then they would have to submit a statement to that effect, also in a sealed cover for opening along with price bid/s.

Annexure-I

Enquiry No : BAP/PUR/PB/ 9530119E dt.17.05.2013

Part-D

The tender quantity will be splitted between L1 and next lowest bidder in the ratio of **70:30**. Please refer below for terms and conditions of quantity split.

1. BHEL reserves the right to increase or decrease the tender quantity.
2. Lowest prices received against BHEL tenders need not be the technically acceptable L1 Price and BHEL reserves the right not to consider the same.
3. BHEL reserves the right to negotiate or re-float the tender opened if L1 price is not the lowest acceptable price to inter- alia other reasons.
4. BHEL reserves the right to negotiate the L1 rates.
5. BHEL reserves the right to split the tendered quantity as follows: 70:30 (70% for the original L1 and 30% for the next higher bidder who accepts to supply the goods and quantity at the same rates, commercial terms and conditions as that of the L1)
6. The quantity split is considered on the grounds of:
 - Higher quantity
 - Higher tender value
 - Capacity limitation of the suppliers.
 - Delivery requirement of BHEL
 - One or a combination of above or all of the above.
7. In no case the highest quoted bidder (H1) would be given the opportunity of the quantity split. Similarly, if there are only two bidders, quantity split will not be generally considered. However in exceptional circumstances, BHEL may still resort to quantity split between the two bidders, to meet their requirements.
8. It is understood that Bidders participating in this tender have agreed to this condition. Mere stipulation of the quantity split condition in the tender does not guarantee that BHEL will split the order. BHEL reserves the right to place orders on respective L1 only without resorting to the quantity split, even if the quantity split provision is made available in the tender.
9. The quantity split ratio is only indicative and BHEL has the right to modify the same depending on the quantities requirement of their customer projects. Such modifications would be within the range of $\pm 10\%$ of the indicated split ratio.

10. The L1 prices and their agreed commercial terms and conditions would be counter-offered to the next higher bidders in the order of their ranking and the quantity split would be given to the bidders who accept it in -toto on the basis of their ranking in the price bid.

9. If none of the other bidders accept the counter-offer viz the Price, Quantity, commercial terms and conditions, then the entire quantity of the tender would be ordered with the original L1 only without any further recourse by BHEL.

10. The decision that the quantity split would not be operated would generally be intimated to the technically successful bidders before the price bid opening. However in exceptional circumstances, BHEL may resort to ordering only on the respective L1, without the quantity split, even after the price bid is opened. The decision of BHEL in this would be final and would be binding on all the bidders.

Note:

In the event of non-operation of Quantity split , Suppliers are expected to pass on the volume / quantity discounts, as applicable to BHEL.

Counter offer: Will be made matching the lowest landed cost to BHEL(L1)

Annexure-I

Enquiry No : BAP/PUR/PB/ 9530119E dt.17.05.2013

Part-E

Enquiry No :

dt.

Due dt:

Techno – Commercial Bid and Price Bid

Item : Plain Bearing

Kind Attn : Mr Biswajit Rath

To,

Manager /Purchase,

Bharat Heavy Electricals Limited,

Boiler Auxiliaries Plant,

Indira Gandhi Industrial Complex ,

Ranipet , Dist : Vellore , Tamilnadu –

632406 , India.

From

“Vendor Address”

Enquiry No :

dt.

Due dt:

Techno – Commercial Bid

Item : Plain Bearing

To,

Manager /Purchase,

Bharat Heavy Electricals Limited,

Boiler Auxiliaries Plant,

Indira Gandhi Industrial Complex ,

Ranipet , Dist : Vellore , Tamilnadu -

632406 , India.

From

“Vendor Address”

Enquiry No :

dt.

Due dt:

Price Bid

Item : Plain Bearing

To,

Manager /Purchase,

Bharat Heavy Electricals Limited,

Boiler Auxiliaries Plant,

Indira Gandhi Industrial Complex ,

Ranipet , Dist : Vellore , Tamilnadu -

632406 , India.

From

“Vendor Address”

Enquiry No :

dt.

Due dt:

Supplier Registration Form (SRF)

Item : Plain Bearing

To,

Manager /Purchase,

Bharat Heavy Electricals Limited,

Boiler Auxiliaries Plant,

Indira Gandhi Industrial Complex ,

Ranipet , Dist : Vellore , Tamilnadu -

632406 , India.

From

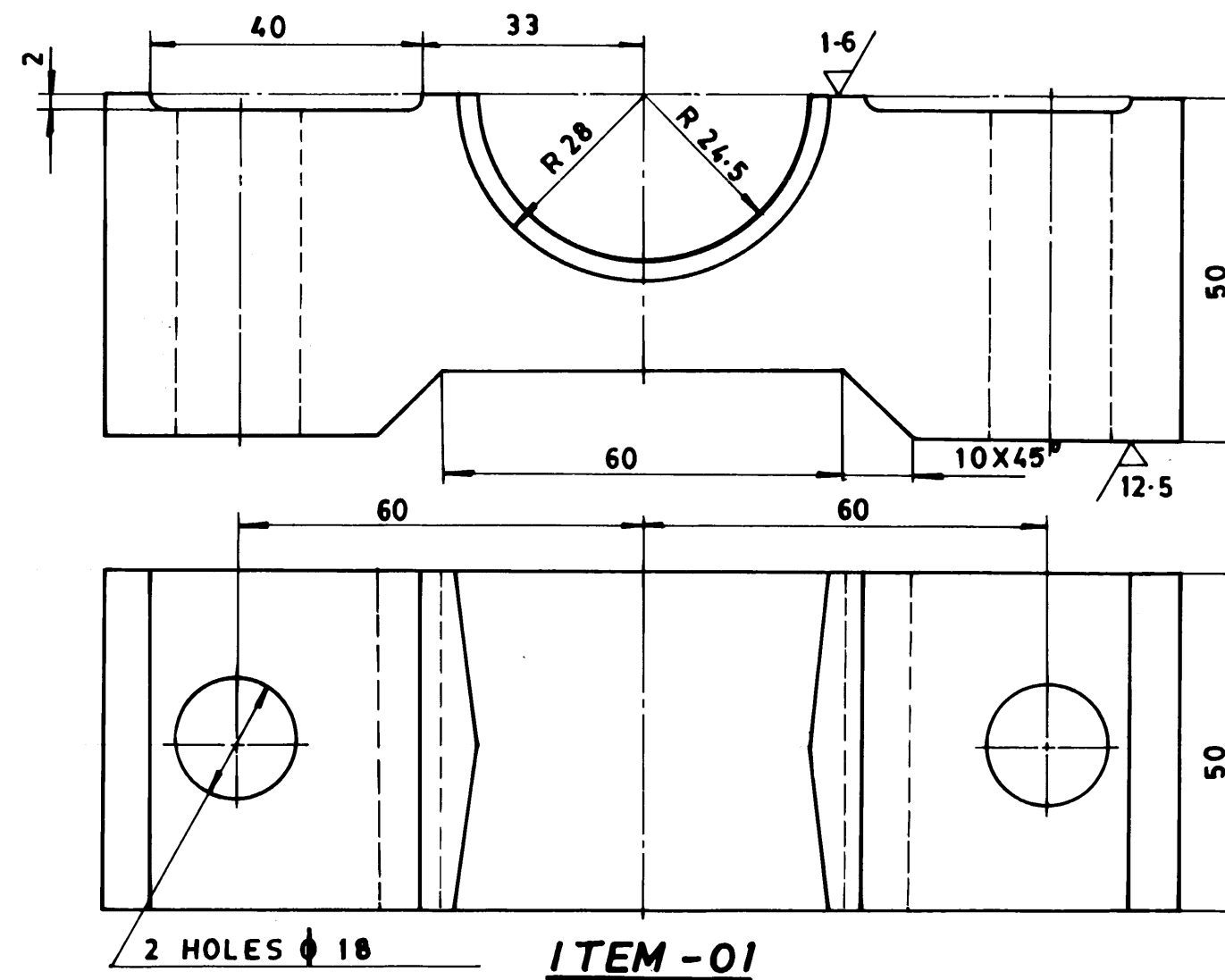
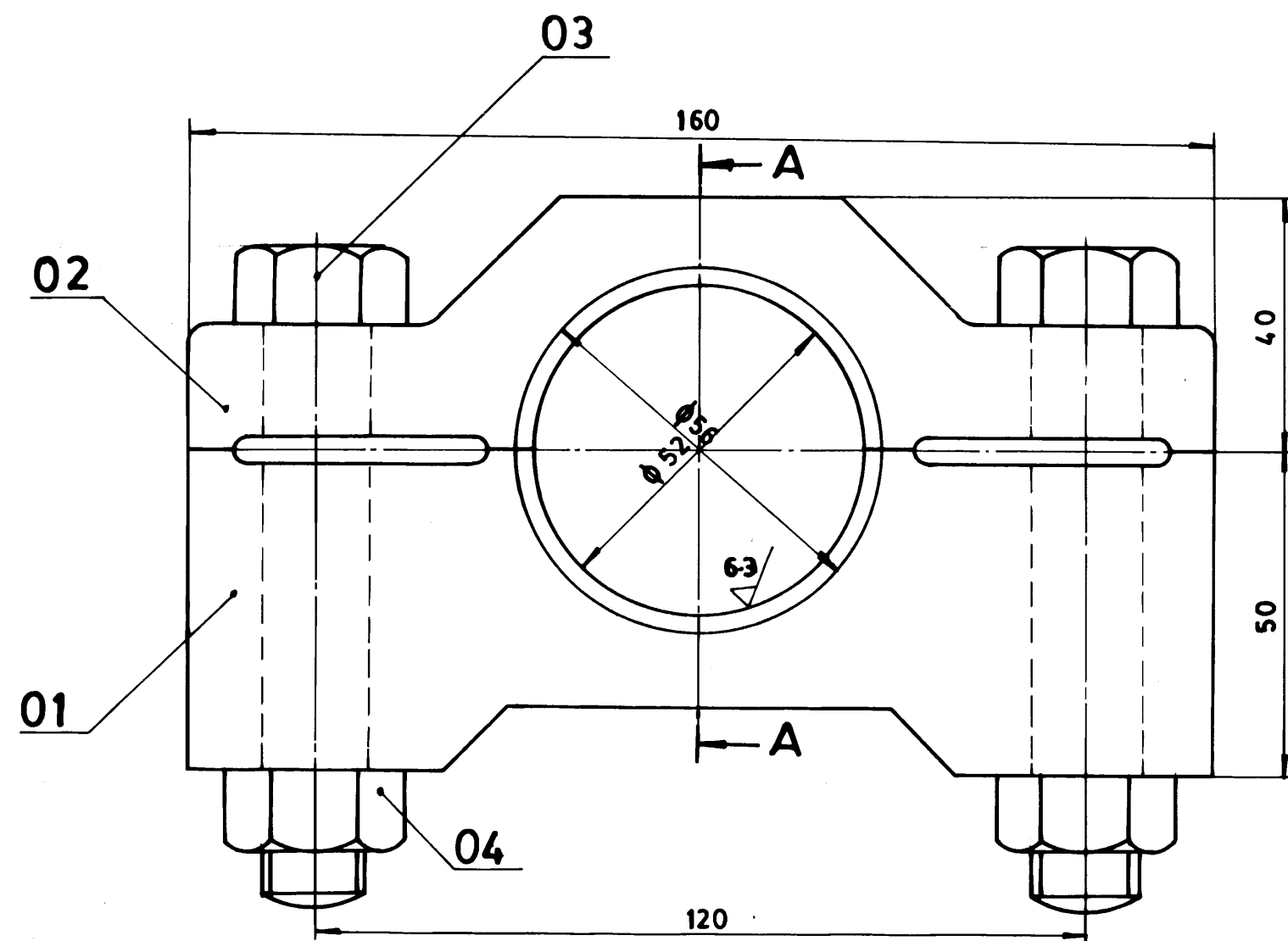
“Vendor Address”

FIRST ANGLE PROJECTION (ALL DIMENSIONS IN MILLIMETRES)

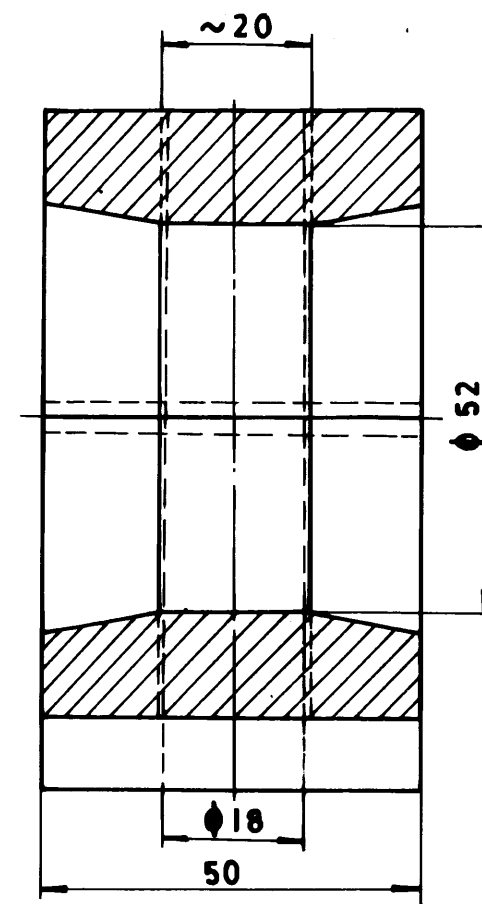
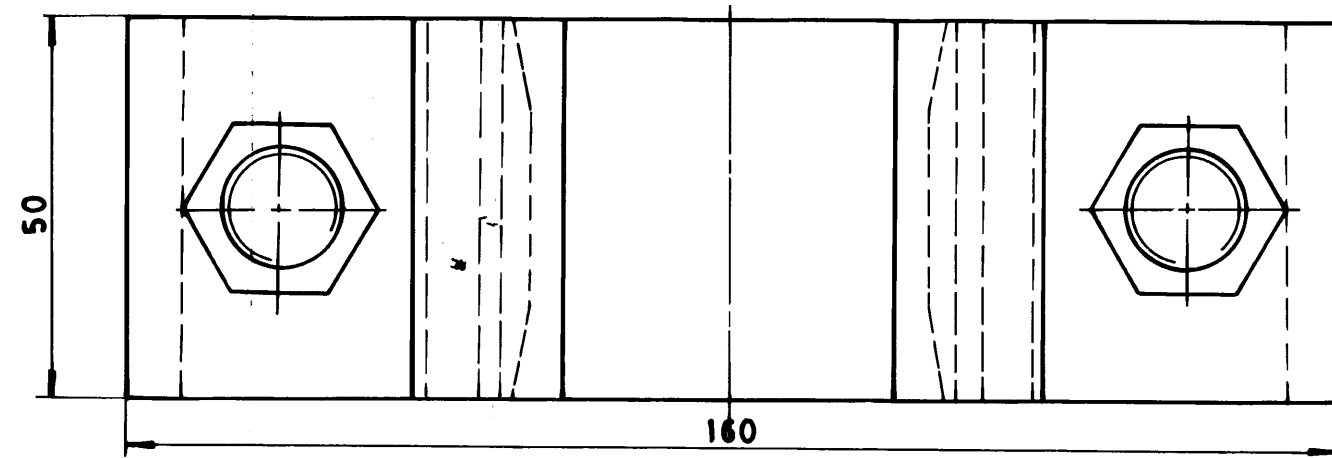
9900-2719
DRAWING NO.

25 / 12.5 / 6.3 / 1.6 /

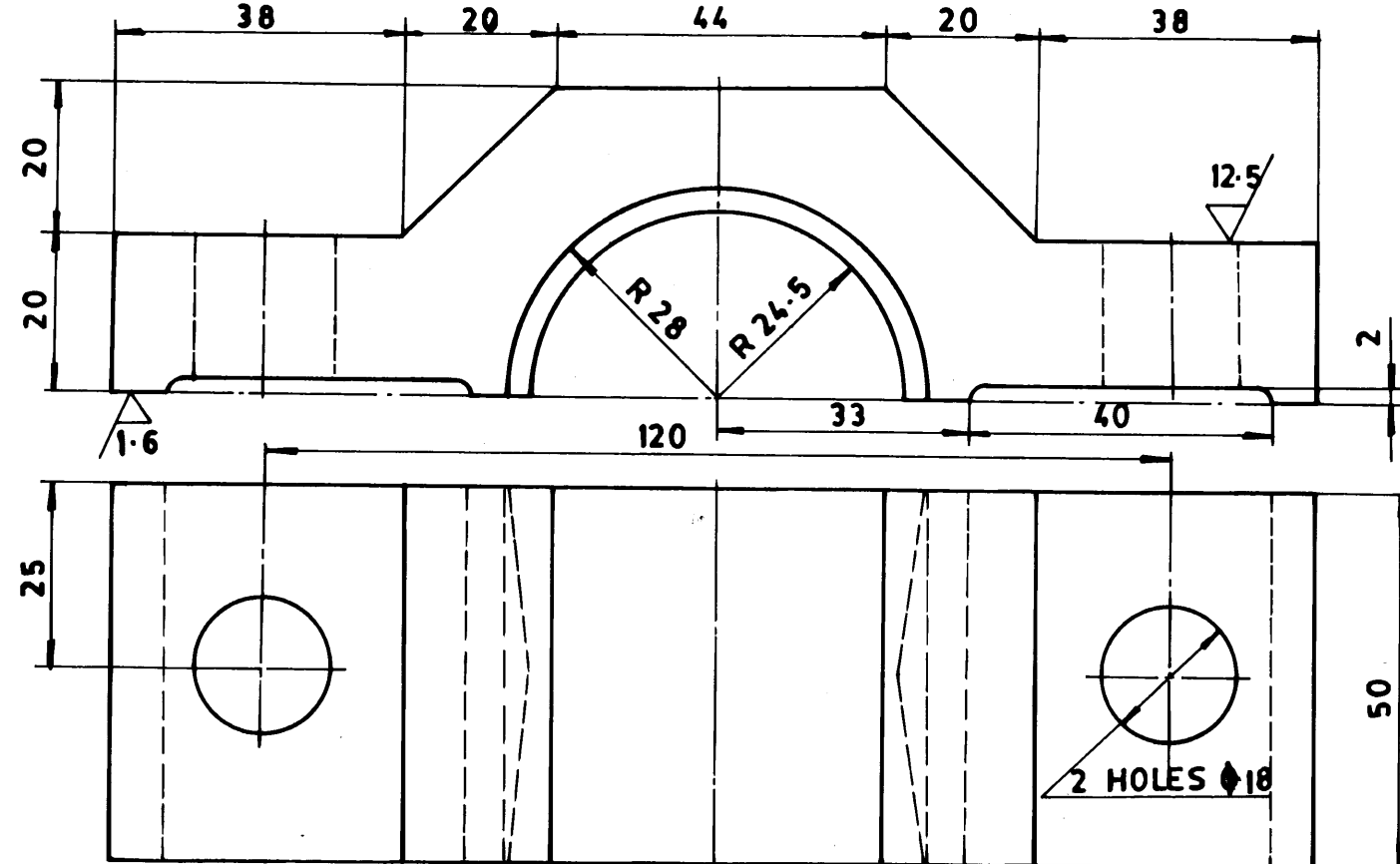
CAUTION: THE INFORMATION ON THIS DOCUMENT IS THE PROPERTY OF BHARAT HEAVY ELECTRICALS LTD. IT MUST NOT BE USED DIRECTLY OR INDIRECTLY IN ANY WAY DETRIMENTAL TO THE INTEREST OF THE COMPANY.



REF. P. 304 FOR PAINTING
REF. P. 304 500 F



SECTION-AA
(AFTER MACHINING)



ITEM-02

ITEM No.	DESCRIPTION	DRAWING No.	MATL. CODE	UNIT	UNIT WT.	QTY
04	BOLT & NUT HEX		41256 16100		0.219	2
03	GR. C 4-6 M16X100		IS 1363		2	2
02	BEARING UPPER PART		92-005-605		1.200	1
01	BEARING LOWER PART		IS 210 Gr. 25		1	1
01	BEARING LOWER PART		92-005-604		2.187	1
00	PLAIN BEARING ASSY.	6172 006621	IS 210 Gr. 25		1	1
			94-285-050		3.826	1
			ASSY.			

TYPE OF PRODUCT OR NAME OF CUSTOMER/PROJECT		Bharat Heavy Electricals Ltd. BOILER AUXILIARIES PLANT RANIPET-632 406		DRN.	NAME	SIGN	DATE	No. OF ITEMS
REV 01 08-05-91		ALtered KJA CHECKED [Signature]		CHD.	KJA	[Signature]	8-5-91	ITEM No.
ZONE		BOLT SIZE CHANGED TO M16X100 AND NUT IS PROCURED ALONG WITH BOLT.		APPD.	SM	[Signature]	01/91	REV
DEPT. STDS CODE 867		GRADE OF UNTOOL DIM C/M/F		SCALE NTS		WEIGHT (kg)		ITEM No.
TITLE PLAIN BEARING		CARD CODE U 01		DRAWING No. 6172-0066		REF. TO ASSY/OLD DRG. 2-79-025-00259/01		01