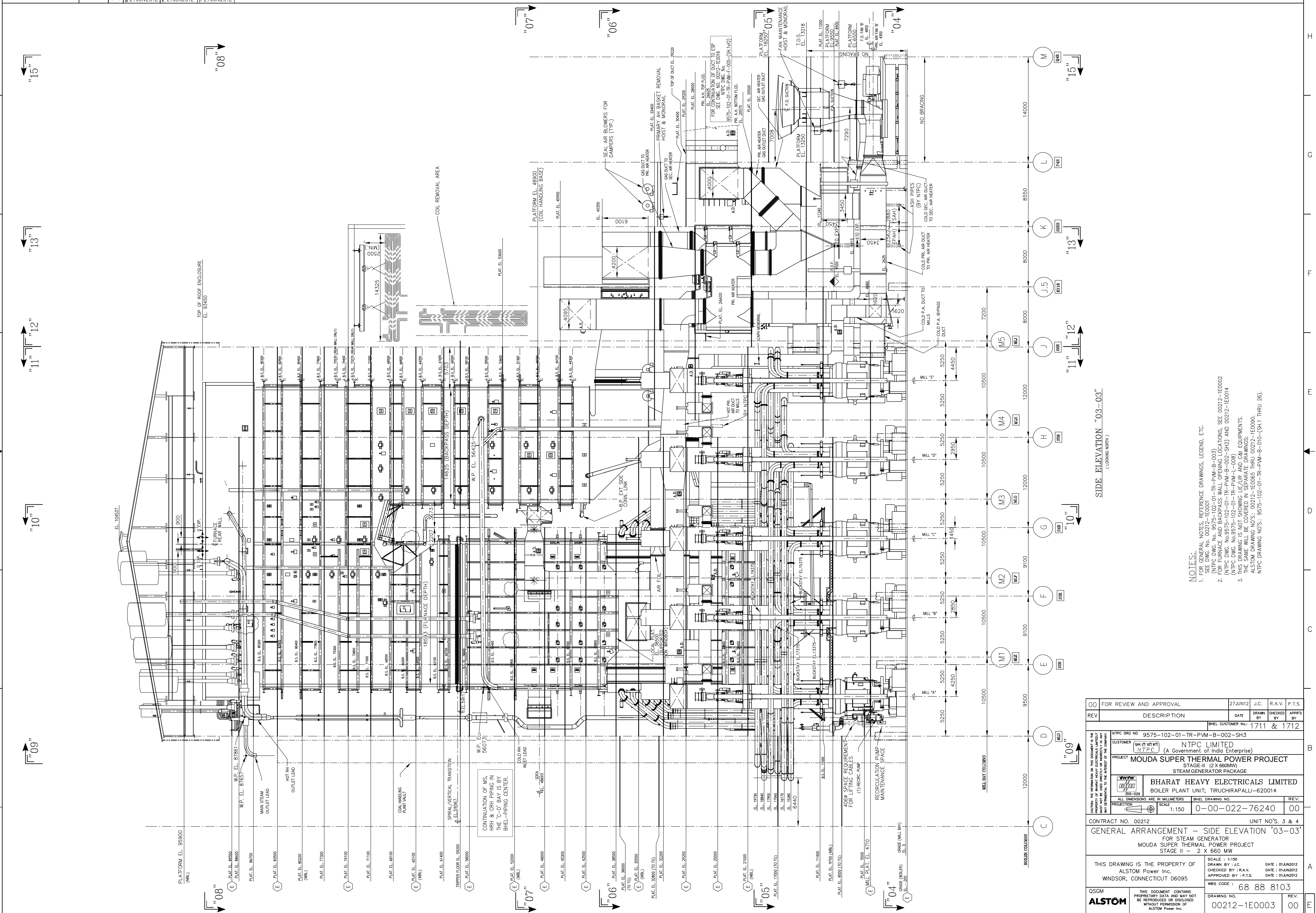


No.	DESCRIPTION	PRESENT	FUTURE	REMARKS
1	No. OF WALL BLOWERS	96	24	FLOOR SUPPLIED IN ORIGINAL DESIGN
2	No. OF LONG RETRACTABLE SOOT BLOWERS	42	4	
3	TEMPERATURE PROBES	2	-	
4	FLAME VIEWING SYSTEM (No. OF OPENINGS ONLY) - 170mm	4	-	
5	ACOUSTIC PYROMETERS (No. OF OPENINGS ONLY) - 170mm - I PASS	HOLES - 20	-	INFURNACE
6	ACOUSTIC PYROMETERS (No. OF OPENINGS ONLY) - 170mm - II PASS	HOLES - 8	-	IN FURNACE OUTLET
7	ASLD (ACOUSTIC STEAM LEAK DETECTOR)	30	-	

SECTIONAL SIDE ELEVATION "02-02"
(LOOKING NORTH)

- NOTES:
- FOR GENERAL NOTES, REFERENCE DRAWINGS, LEGEND, ETC. SEE DWG. NO. 00212-1E0001
 - NTPC DRAWING NO. 9575-102-01-TR-PVM-B-003.
 - FURNACE TUBEWALL OPENINGS AND LOCATIONS IN THE SPIRAL WALL SHOWN ARE FOR THE RIGHT SIDE TUBE WALL. THE LEFT SIDE TUBE WALL IS IDENTICAL (NOT MIRRORRED).
 - OPENINGS AND LOCATIONS IN THE FURNACE VERTICAL TUBE WALLS, FURNACE EXTENDED SIDE WALLS, AND BACKPASS SIDE WALLS ARE IN BOTH SIDES OF THE FURNACE, UNLESS NOTED.
 - THIS DRAWING IS NOT SHOWING I/E AND O/E EQUIPMENTS. THE SAME WILL BE COVERED IN SEPARATE DRAWINGS.
 - ALSTOM DRAWING NO'S: 00212-1E0065 THRU 00212-1E0090.
 - NTPC DRAWING NO'S: 9575-102-01-TR-PVM-B-010-(SH-1 THRU 26).

00 FOR REVIEW AND APPROVAL	27 JUN 12	J.C.	R.A.V.	P.T.S.
REV	DESCRIPTION	DATE	DRAWN BY	CHECKED BY
			1711 & 1712	
NTPC DRG NO: 9575-102-01-TR-PVM-B-002-SH2		CUSTOMER: NTPC LIMITED		
PROJECT: MOUDA SUPER THERMAL POWER PROJECT		STAGE-II (2 X 660MW)		
BOILER PLANT UNIT; TIRUCHIRAPALLI-620014		STATIONARY GENERATOR PACKAGE		
Bharat Heavy Electricals Limited		BOILER PLANT UNIT; TIRUCHIRAPALLI-620014		
ALL DIMENSIONS ARE IN MILLIMETERS		SCALE: 1:150		
CONTRACT NO. 00212		UNIT NO'S. 3 & 4		
GENERAL ARRANGEMENT - SIDE ELEVATION "02-02"				
FOR STEAM GENERATOR				
MOUDA SUPER THERMAL POWER PROJECT				
STAGE II - 2 X 660 MW				
THIS DRAWING IS THE PROPERTY OF		DATE: 01/JUN/2012		
ALSTOM Power Inc.		CHECKED BY: R.A.V.		
WINDSOR, CONNECTICUT 06095		DATE: 01/JUN/2012		
APPROVED BY: P.T.S.		DATE: 01/JUN/2012		
MBS CODE: 68 88 8103		SCALE: 1:150		
THIS DOCUMENT CONTAINS PROPRIETARY DATA AND MAY NOT BE REPRODUCED OR DISCLOSED WITHOUT PERMISSION OF ALSTOM Power Inc.		DRAWING NO. 00212-1E0002		
ALSTOM		REV. 00		

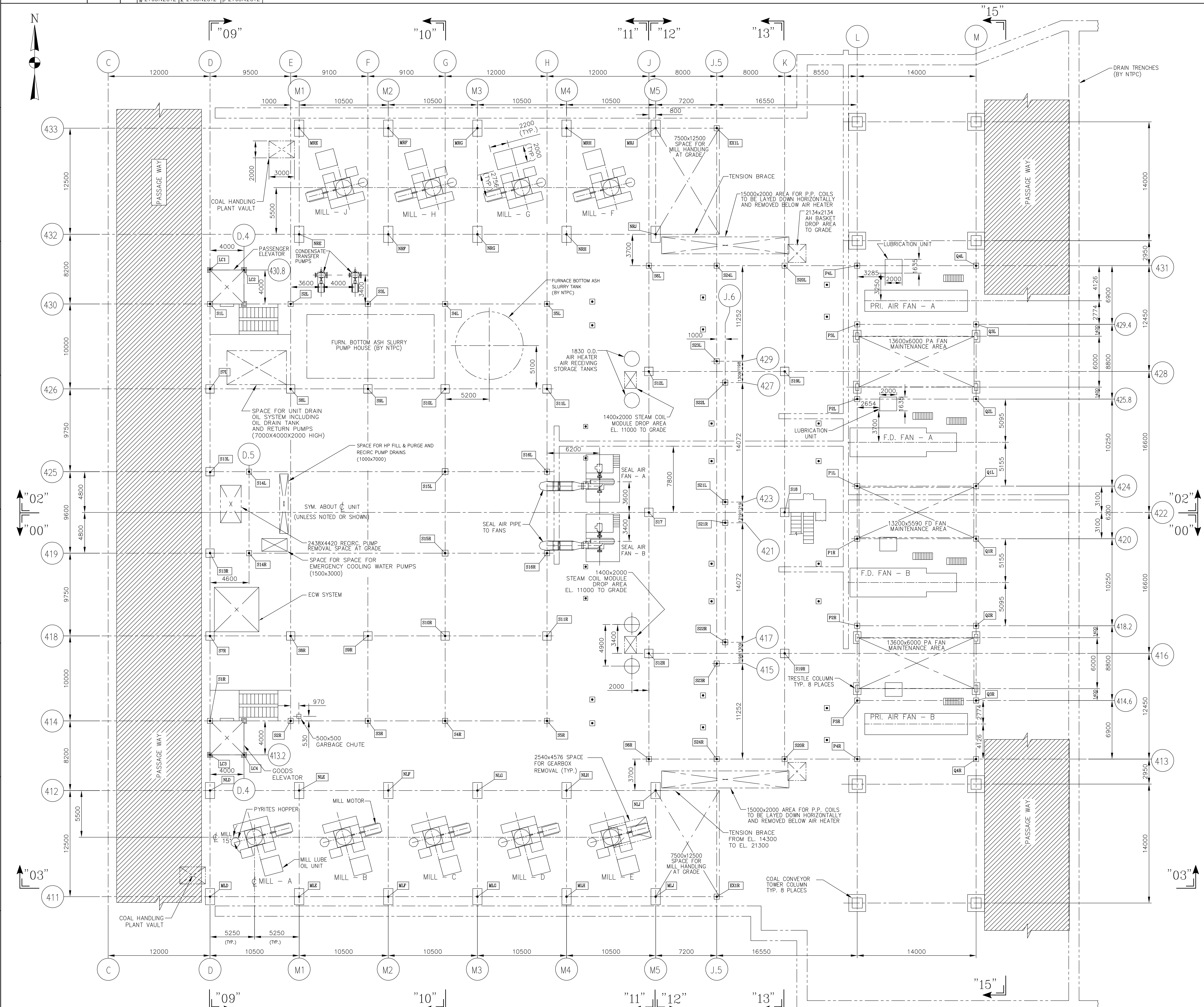


NOTES:

- FOR GENERAL NOTES, REFERENCE DRAWINGS, LEGEND, ETC. (SEE DWG. NO. 00212-1E0001)
- FOR FURNACE AND BACKPASS WALL OPENING LOCATIONS, SEE 00212-1E0002 (NTPC DWG. NO. 9575-102-01-TR-PWM-B-002-SH2) AND 00212-1E0014 (NTPC DWG. NO. 9575-102-01-TR-PWM-B-002-SH2) AND 00212-1E0014 (NTPC DWG. NO. 9575-102-01-TR-PWM-L-008)
- THIS DRAWING IS NOT SHOWING LEGGERS AND CRANES EQUIPMENTS. SEE 00212-1E0005 (NTPC DWG. NO. 9575-102-01-TR-PWM-L-008) AND 00212-1E0090 (ALSTOM DRAWING NO. 9575-102-01-TR-PWM-B-010-(SH1 THRU 26))

SIDE ELEVATION '03-03'
(LOOKING NORTH)

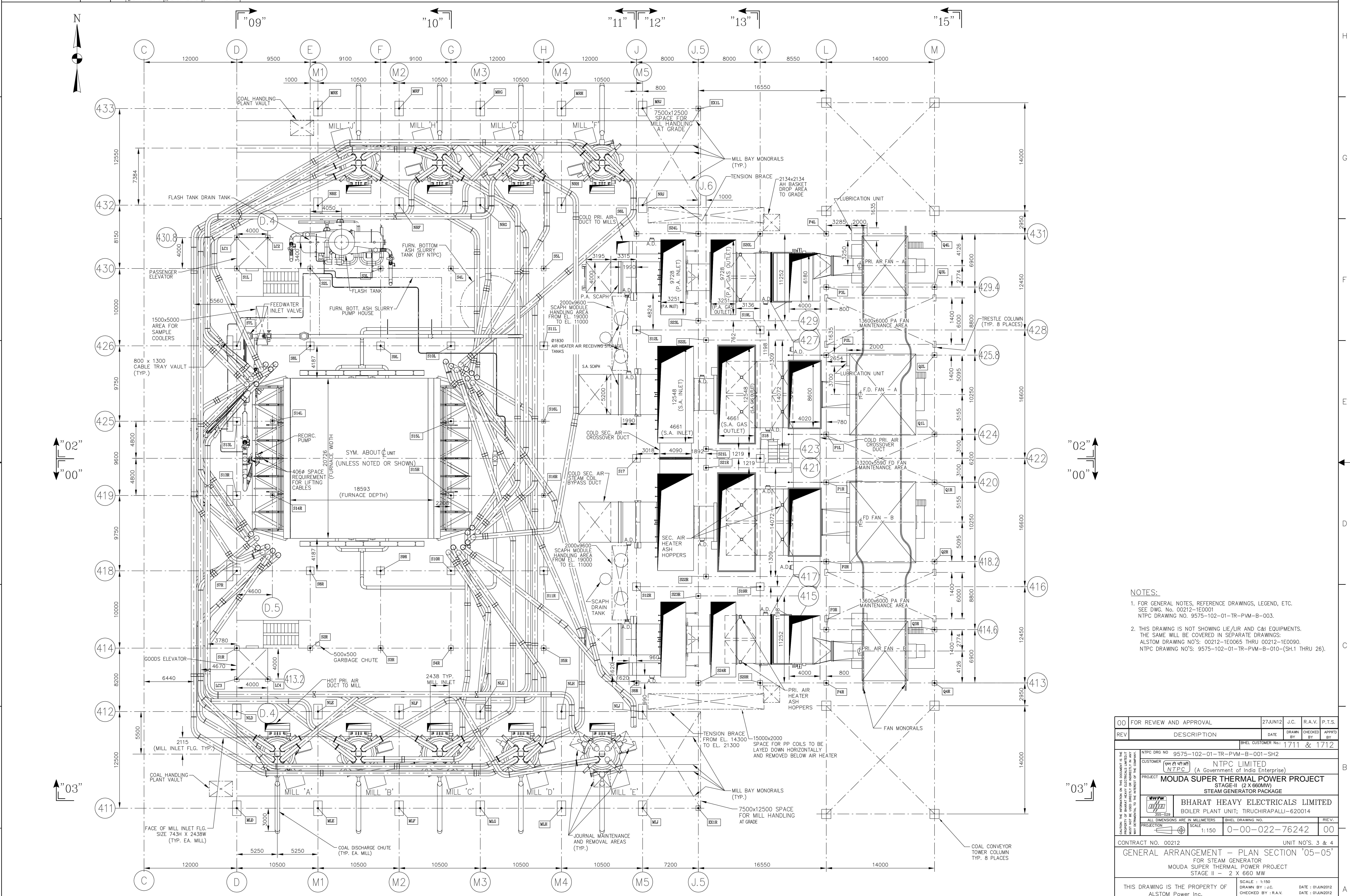
00	FOR REVIEW AND APPROVAL	27JUN12	J.C.	R.A.V.	P.T.S.
REV	DESCRIPTION	DATE	DRAWN	CHECKED	APPROD
			BY	BY	BY
			1711 & 1712		
NTPC DWG NO 9575-102-01-TR-PWM-B-002-SH3 CUSTOMER NTPC LIMITED (A Government of India Enterprise) PROJECT MOUDA SUPER THERMAL POWER PROJECT STAGE-II (2 X 660MW) STEAM GENERATOR PACKAGE BHARAT HEAVY ELECTRICALS LIMITED BOILER PLANT UNIT, TIRUCHIRAPALLI-620014					
ALL DIMENSIONS ARE IN MILLIMETERS SCALE 1:150 PROJECTION BHEL DRAWING NO. 0-00-022-76240 REV. 00					
CONTRACT NO. 00212 UNIT NO'S. 3 & 4 GENERAL ARRANGEMENT - SIDE ELEVATION '03-03' FOR STEAM GENERATOR MOUDA SUPER THERMAL POWER PROJECT STAGE II - 2 X 660 MW					
THIS DRAWING IS THE PROPERTY OF ALSTOM Power Inc. WINDSOR, CONNECTICUT 06095 SCALE: 1:150 DRAWN BY: J.C. CHECKED BY: R.A.V. APPROVED BY: P.T.S. DATE: 01/JUN/2012 DATE: 01/JUN/2012 DATE: 01/JUN/2012 WBS CODE: 68 88 8103					
QSGM	THIS DOCUMENT CONTAINS PROPRIETARY DATA AND MAY NOT BE REPRODUCED OR DISCLOSED WITHOUT PERMISSION OF ALSTOM Power Inc.				DRAWING NO. 00212-1E0003 REV. 00



PLAN SECTION "04-04"
(TAKEN AT EL. 4000)

- NOTES:
- FOR GENERAL NOTES, REFERENCE DRAWINGS, LEGEND, ETC. SEE DWG. No. 00212-1E0001
NTPC DRAWING NO. 9575-102-01-TR-PVM-B-003.
 - THIS DRAWING IS NOT SHOWING LIE/LIR AND CAI EQUIPMENTS. THE SAME WILL BE COVERED IN SEPARATE DRAWINGS:
ALSTOM DRAWING NO'S: 00212-1E0065 THRU 00212-1E0090.
NTPC DRAWING NO'S: 9575-102-01-TR-PVM-B-010-(SH.1 THRU 26).

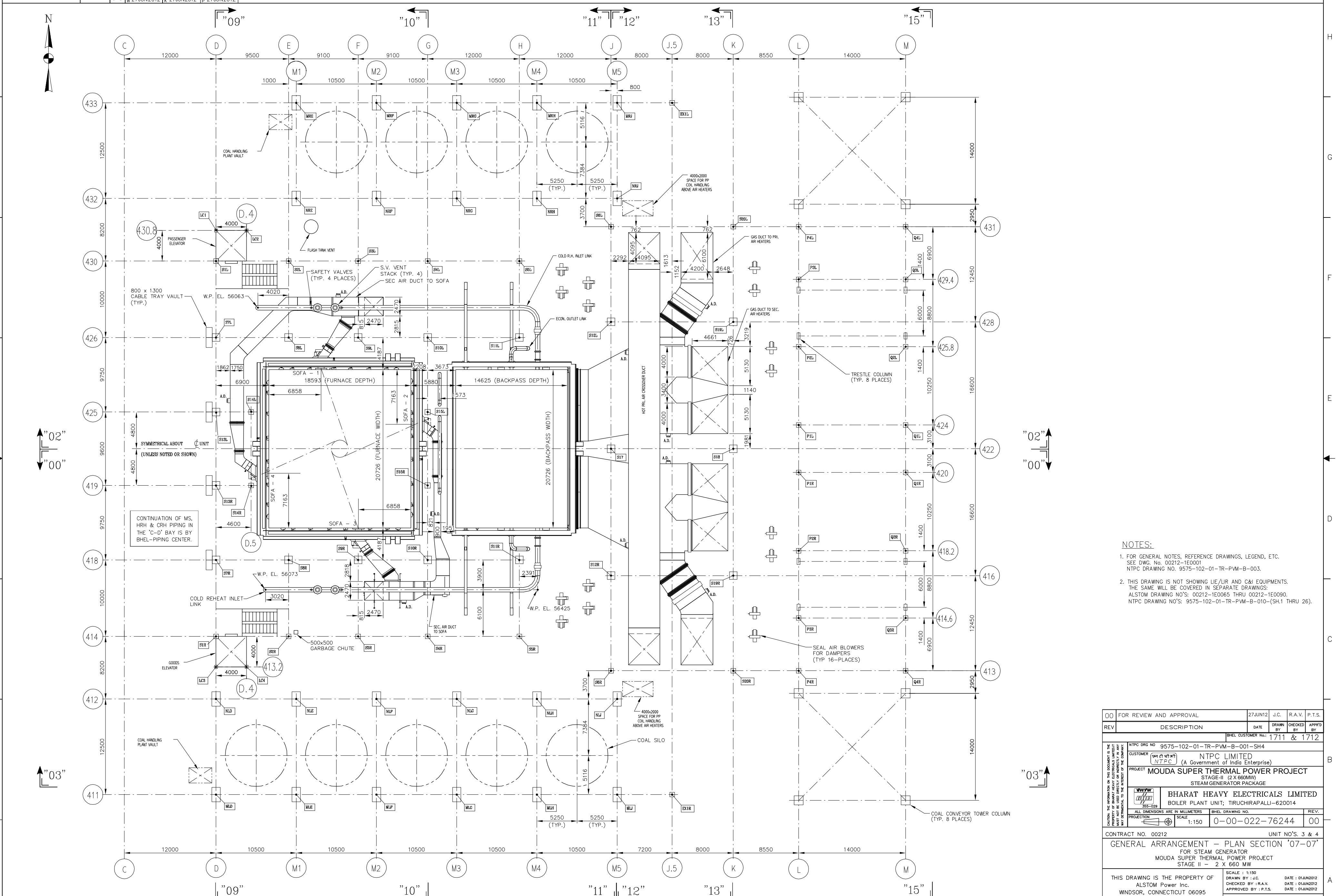
00	FOR REVIEW AND APPROVAL	27JUN12	J.C.	R.A.V.	P.T.S.
REV	DESCRIPTION	DATE	DRAWN BY	CHECKED BY	APPR'D BY
					1711 & 1712
NTPC DRG NO. 9575-102-01-TR-PVM-B-001-SH1 CUSTOMER: NTPC LIMITED (A Government of India Enterprise) PROJECT: MOUDA SUPER THERMAL POWER PROJECT (STAGE-II (2 X 660MW) STEAM GENERATOR PACKAGE) BHARAT HEAVY ELECTRICALS LIMITED BOILER PLANT UNIT, TIRUCHIRAPALLI-620014 ALL DIMENSIONS ARE IN MILLIMETERS SCALE: 1:150 SHEET NO. 0-00-022-76241 REV. 00					
CONTRACT NO. 00212 UNIT NO'S. 3 & 4 GENERAL ARRANGEMENT - PLAN SECTION "04-04" FOR STEAM GENERATOR MOUDA SUPER THERMAL POWER PROJECT STAGE II - 2 X 660 MW					
THIS DRAWING IS THE PROPERTY OF ALSTOM Power Inc. WINDSOR, CONNECTICUT 06095			SCALE: 1:150 DRAWN BY: J.C. CHECKED BY: R.A.V. APPROVED BY: P.T.S. DATE: 01JUN2012 DATE: 01JUN2012 DATE: 01JUN2012 WBS CODE: 68 88 8103		
QSGM	THIS DOCUMENT CONTAINS PROPRIETARY DATA AND MAY NOT BE REPRODUCED OR DISCLOSED WITHOUT PERMISSION OF ALSTOM Power Inc.				REV.
ALSTOM	DRAWING NO. 00212-1E0004				00



PLAN SECTION "05-05"
(TAKEN AT EL. 20000)

- NOTES:**
- FOR GENERAL NOTES, REFERENCE DRAWINGS, LEGEND, ETC. SEE DWG. NO. 00212-1E0001 NTPC DRAWING NO. 9575-102-01-TR-PVM-B-003.
 - THIS DRAWING IS NOT SHOWING LIE/LIR AND C&I EQUIPMENTS. THE SAME WILL BE COVERED IN SEPARATE DRAWINGS. ALSTOM DRAWING NO'S: 00212-1E0065 THRU 00212-1E0090. NTPC DRAWING NO'S: 9575-102-01-TR-PVM-B-010-(SH.1 THRU 26).

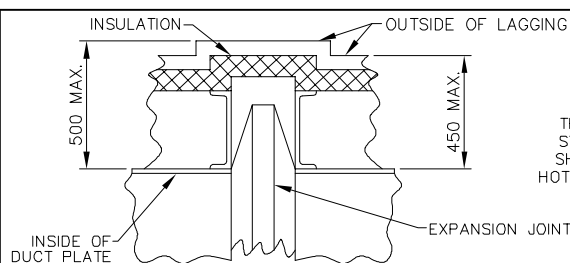
00	FOR REVIEW AND APPROVAL	27JUN12	J.C.	R.A.V.	P.T.S.
REV	DESCRIPTION	DATE	DRAWN BY	CHECKED BY	APPRD BY
NTPC DRG NO: 9575-102-01-TR-PVM-B-001-SH2 CUSTOMER: NTPC LIMITED PROJECT: MOUDA SUPER THERMAL POWER PROJECT STAGE-II (2 X 660MW) STEAM GENERATOR PACKAGE					
BHARAT HEAVY ELECTRICALS LIMITED BOILER PLANT UNIT: TIRUCHIRAPALLI-620014					
ALL DIMENSIONS ARE IN MILLIMETERS SCALE: 1:150 DRAWING NO: 0-00-022-76242 REV: 00					
CONTRACT NO. 00212 UNIT NO'S. 3 & 4 GENERAL ARRANGEMENT - PLAN SECTION "05-05" FOR STEAM GENERATOR MOUDA SUPER THERMAL POWER PROJECT STAGE II - 2 X 660 MW					
THIS DRAWING IS THE PROPERTY OF ALSTOM Power Inc. WINDSOR, CONNECTICUT 06095			SCALE: 1:150 DATE: 01JUN2012 CHECKED BY: R.A.V. DATE: 01JUN2012 APPROVED BY: P.T.S. DATE: 01JUN2012		
WBS CODE: 68 88 8103			DRAWING NO: 00212-1E0005 REV: 00		



PLAN SECTION "07-07"
(TAKEN AT EL. 52000)

- NOTES:**
- FOR GENERAL NOTES, REFERENCE DRAWINGS, LEGEND, ETC. SEE DWG. No. 00212-1E0001 NTPC DRAWING NO. 9575-102-01-TR-PVM-B-003.
 - THIS DRAWING IS NOT SHOWING U/E/UR AND C&I EQUIPMENTS. THE SAME WILL BE COVERED IN SEPARATE DRAWINGS: ALSTOM DRAWING NO'S: 00212-1E0065 THRU 00212-1E0090. NTPC DRAWING NO'S: 9575-102-01-TR-PVM-B-010-(SH.1 THRU 26).

00	FOR REVIEW AND APPROVAL	27JUN12	J.C.	R.A.V.	P.T.S.
REV	DESCRIPTION	DATE	DRAWN BY	CHECKED BY	APPROD BY
			1711	&	1712
NTPC DRG NO: 9575-102-01-TR-PVM-B-001-SH4 CUSTOMER: NTPC LIMITED (A Government of India Enterprise) PROJECT: MOUDA SUPER THERMAL POWER PROJECT (STAGE-II (2 X 660MW)) STEAM GENERATOR PACKAGE BHARAT HEAVY ELECTRICALS LIMITED BOILER PLANT UNIT, TIRUCHIRAPALLI-620014					
ALL DIMENSIONS ARE IN MILLIMETERS SCALE: 1:150 BHHEL DRAWING NO: 0-00-022-76244 REV: 00					
CONTRACT NO. 00212 UNIT NO'S. 3 & 4 GENERAL ARRANGEMENT - PLAN SECTION "07-07" FOR STEAM GENERATOR MOUDA SUPER THERMAL POWER PROJECT STAGE II - 2 X 660 MW					
THIS DRAWING IS THE PROPERTY OF ALSTOM Power Inc. WINDSOR, CONNECTICUT 06095 SCALE: 1:150 DRAWN BY: J.C. CHECKED BY: R.A.V. APPROVED BY: P.T.S. DATE: 01JUN2012 DATE: 01JUN2012 DATE: 01JUN2012 WBS CODE: 68 88 8103					
QSGM	THIS DOCUMENT CONTAINS PROPRIETARY DATA AND MAY NOT BE REPRODUCED OR DISCLOSED WITHOUT PERMISSION OF ALSTOM Power Inc.				REV.
ALSTOM	00212-1E0007				00



TYPICAL EXPANSION JOINT AND DUCT INSULATION WITH LAGGING
 THIS TYPICAL DETAIL INDICATES MAXIMUM DIMENSIONS INCLUDING STIFFENERS, INSULATION AND LAGGING FOR ALL HOT DUCTS AND SHOULD BE USED IN DETERMINING PROPER CLEARANCES OF BOTH HOT & COLD DUCTS FROM STRUCTURAL AND OTHER EQUIPMENT, ETC.

DESCRIPTION OF UNIT:
 1 - 660 MW (2120 T/HR) [4,629,660 LBS/HR] ONCE THROUGH SUPER CRITICAL, HAVING TWO PASS, SPIRAL WATER WALL TUBE, TOP SUPPORTED, SINGLE REHEAT, TANGENTIAL CORNER FIRED FURNACE WITH DIRECT PULVERIZED COAL FIRING, BALANCE DRAFT, RADIANT DRY BOTTOM, AND SUITABLE FOR OUTDOOR INSTALLATION
 FURNACE SIZE: 20726.4 WIDTH X 18592.8 DEPTH
 42.2 O.D. TUBES ON 54.0 CENTERS - FURNACE SPIRAL WALL
 38.1 O.D. TUBES ON 50.8 CENTERS - FURNACE VERTICAL WALL
 NON-PRESSURIZED ROOF ENCLOSURE
 FIRING EQUIPMENT: TT 812 WINDBOX
 PULVERIZED COAL; (9) HP1103 MILLS W/STATIC CLASSIFIERS

INDEX DRAWINGS:

1. PRESSURE PARTS ARRANGEMENTS	00212-1E0100
2. PIPING MISC. P.P. EQUIP.	00212-1E0300
3. PRESS. PARTS CONN.-EXP. MOVEMENT DIAG.	00212-1E0355
4. STRUCTURAL STEEL ARRANGEMENTS	00212-1E2001
5. DUCT ARRANGEMENTS	00212-1E2500
6. BUCKSTAY ARRANGEMENTS	00212-1E2901
7. P.P. HANGERS AND SUPPORTS ARRGT'S.	00212-1E3500
8. FUEL PIPE ARRANGEMENTS	00212-1E4000
9. WINDBOX ARRANGEMENTS	00212-1E4100
10. SEAL AIR SYSTEM PIPING ARRANGEMENT	00212-1E4408
11. SCANNER AIR SYSTEM ARRANGEMENT	00212-1E4410
12. P & ID'S	00212-1E8501
13. HP-1103 BOWL MILL ARRANGEMENT	E-PLVE-1003

REFERENCE DRAWINGS:

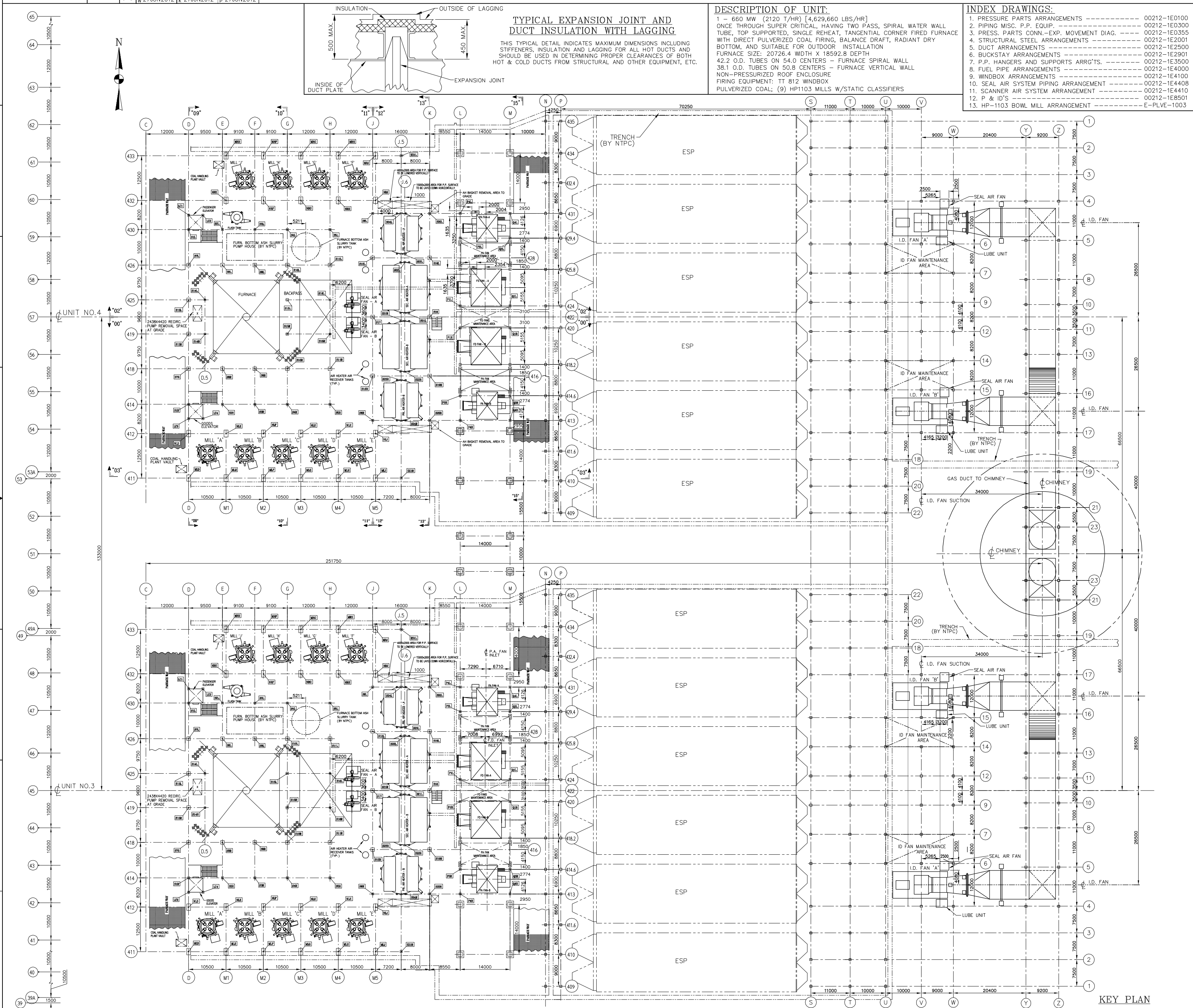
1. GEN. ARRGT. - SIDE ELEV. VIEW "00-00"	00212-1E0000
2. GEN. ARRGT. - KEY PLAN, GEN. NOTES & LEGEND	00212-1E0001
3. GEN. ARRGT. - SIDE ELEV. VIEW "02-02"	00212-1E0002
4. GEN. ARRGT. - SIDE ELEV. VIEW "03-03"	00212-1E0003
5. GEN. ARRGT. - PLAN VIEW "04-04"	00212-1E0004
6. GEN. ARRGT. - PLAN VIEW "05-05"	00212-1E0005
7. GEN. ARRGT. - PLAN VIEW "06-06"	00212-1E0006
8. GEN. ARRGT. - PLAN VIEW "07-07"	00212-1E0007
9. GEN. ARRGT. - PLAN VIEW "08-08"	00212-1E0008
10. GEN. ARRGT. - FRONT ELEV. VIEW "09-09"	00212-1E0009
11. GEN. ARRGT. - REAR ELEV. VIEW "10-10"	00212-1E0010
12. GEN. ARRGT. - REAR ELEV. VIEW "11-11"	00212-1E0011
13. GEN. ARRGT. - FRONT ELEV. VIEW "12-12"	00212-1E0012
14. GEN. ARRGT. - REAR ELEV. VIEW "13-13"	00212-1E0013
15. GEN. ARRGT. - FURNACE WALL VIEWS	00212-1E0014
16. GEN. ARRGT. - REAR ELEV. VIEW "15-15"	00212-1E0015
17. GEN. ARRGT. - BACKEND SIDE ELEV.	00212-1E0016
18. GEN. ARRGT. - REAR ELEV. VIEW "18-18"	00212-1E0017
19. MS,HRH,CRH, & FW PIPING ARRGT.-PLAN VIEW	00212-1E0020
20. MS,HRH,CRH, & FW PIPING ARRGT.-ELEV. VIEW	00212-1E0021
21. FURNACE BOTTOM ASH HOPPER STUDY	00212-100025
22. TYPICAL WALL CLEARANCE REQUIREMENTS	00212-100026
23. DUCT ARRANGEMENTS	00212-1E0040

GENERAL NOTES:

- ALL ELEVATIONS ARE WITH RESPECT TO EL. 0.0M, WHICH CORRESPONDS TO RL (+) 271.50M ABOVE MSL.
- FOR ALL INFORMATION & DIMENSIONS, SEE REFERENCE DRAWINGS.
- ALL DUCT DIMENSIONS ARE TO THE INSIDE OF DUCT PLATES.
- ALL INSIDE DUCT RADI TO BE 600mm, UNLESS NOTED.
- ALL FURNACE OPENINGS ARE IN BOTH SIDES OF FURNACE, UNLESS NOTED.
- ALL PLATFORM ELEVATIONS ARE TO TOP OF GRATING, UNLESS NOTED.
- ACCESS DOOR SIZES TO BE:
 - 500mm X 500mm IN TUBE WALLS
 - 450mm X 450mm IN DUCTS
 - 610mm X 610mm IN ENCLOSURES
 - 900mm X 1800mm IN FURNACE UPPER ROOF ENCLOSURE
 - 500mm X 500mm HEAT REMOVAL DOORS IN ROOF ENCLOSURES
 - 813mm X 1397mm - WATER-COOLED SCAFFOLD DOOR IN UPPER FURNACE SIDEWALL
 - 610mm X 762mm - WATER-COOLED DOOR IN LOWER FURNACE SIDEWALL
- CENTRELINE OF ALL DUCT ACCESS DOORS TO BE LOCATED 600mm ABOVE BOTTOM INSIDE OF DUCT PLATES UNLESS NOTED.
- IT IS THE INTENT OF THE GEN. ARRGT'S. TO SHOW ONLY THE MAJOR BOILER EQUIPMENT COMPONENTS AND ACCESSORIES, ALL OTHER EQUIPMENT IS SHOWN TO A LIMITED EXTENT AND ONLY WHERE IT AFFECTS THE BOILER EQUIPMENT ARRANGEMENT.
- FOR THERMAL MOVEMENTS AT PIPING TERMINAL POINTS, SEE PRESSURE PART CONN'S. AND EXPANSION MOVEMENT DIAGRAMS DWGS. 00212-1E0355 THRU 00212-1E0362.

LEGEND:

- LONG RETRACTABLE SOOT BLOWER
- FUTURE LONG RETRACTABLE SOOT BLOWER
- WALL BLOWER INSTALLED
- FUTURE WALL BLOWER WITH BLANKED-OFF TUBE WALL OPENING
- TELEVISION CAMERA
- GAS TEMPERATURE PROBE
- INSTRUMENT INSERT
- FURNACE GUIDE LEVEL
- DAMPER DRIVE LINKAGE (DIRECT DRIVE UNIT)
- 90 X 160 OBSERVATION DOOR (AIR COOLED)
- FUTURE 90 X 160 OBSERVATION DOOR (AIR COOLED)
- ACCESS DOOR - SEE NOTE NO. 7
- ACCESS DOOR
- WORK POINT
- FACE OF FLANGE
- 600 X 600 ACCESS DOOR - SEE NOTE NO. 7 (ROOF & FURNACE ENCLOSURE)
- ELEVATOR LANDING
- ALSTOM POWER INC./BHEL - SCOPE TERMINAL POINT BY OTHERS
- ACOUSTIC STEAM LEAK DETECTOR
- ACOUSTIC PYROMETER



CONTRACT NO. 00212 UNIT NO'S. 3 & 4
GEN. ARRGT.-KEY PLAN, GENERAL NOTES & LEGEND
 FOR STEAM GENERATOR
 MOUDA SUPER THERMAL POWER PROJECT
 STAGE II - 2 X 660 MW

THIS DRAWING IS THE PROPERTY OF
 ALSTOM Power Inc.
 WINDSOR, CONNECTICUT 06095

SCALE: 1:350
 DRAWN BY: J.C.
 CHECKED BY: R.A.V.
 APPROVED BY: P.T.S.

DATE: 01/JUN/2012
 DATE: 01/JUN/2012
 DATE: 01/JUN/2012

MBS CODE: 68 88 8103

DRAWING NO. 00212-1E0001
 REV. 00

00 FOR REVIEW AND APPROVAL	27JUN12	J.C.	R.A.V.	P.T.S.
REV	DESCRIPTION	DATE	DRAWN BY	CHECKED BY
			1711 & 1712	
NTPC DRG NO 9575-102-01-TR-PVM-B-003 CUSTOMER NTPC LIMITED PROJECT MOUDA SUPER THERMAL POWER PROJECT STAGE-II (2 X 660MW) STEAM GENERATOR PACKAGE BHARAT HEAVY ELECTRICALS LIMITED BOILER PLANT UNIT; TRUCHIRAPALLI-620014				
ALL DIMENSIONS ARE IN MILLIMETERS PROJECTION SCALE 1:350 BHEL DRAWING NO. 0-00-020-76252 REV. 00				