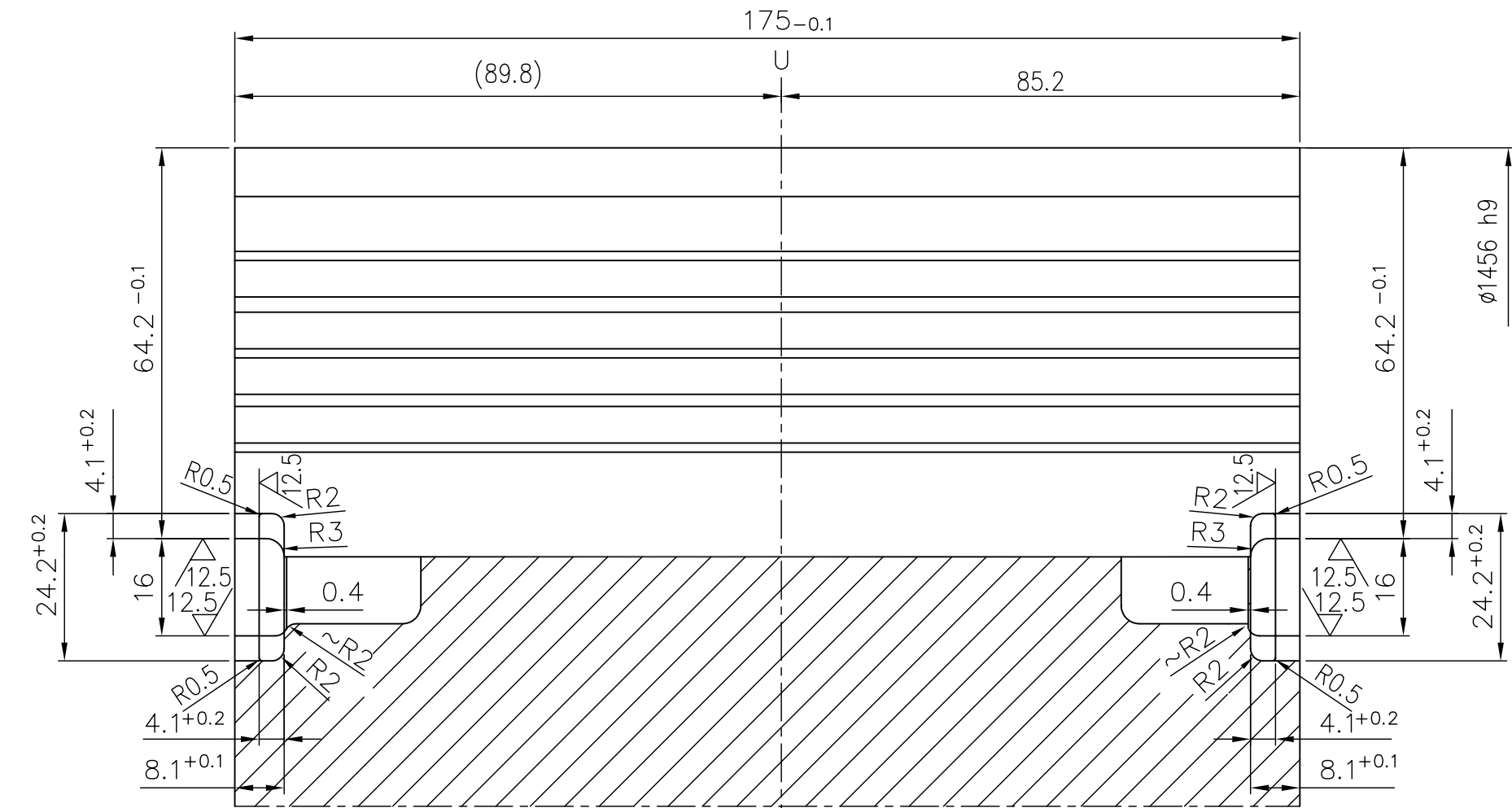
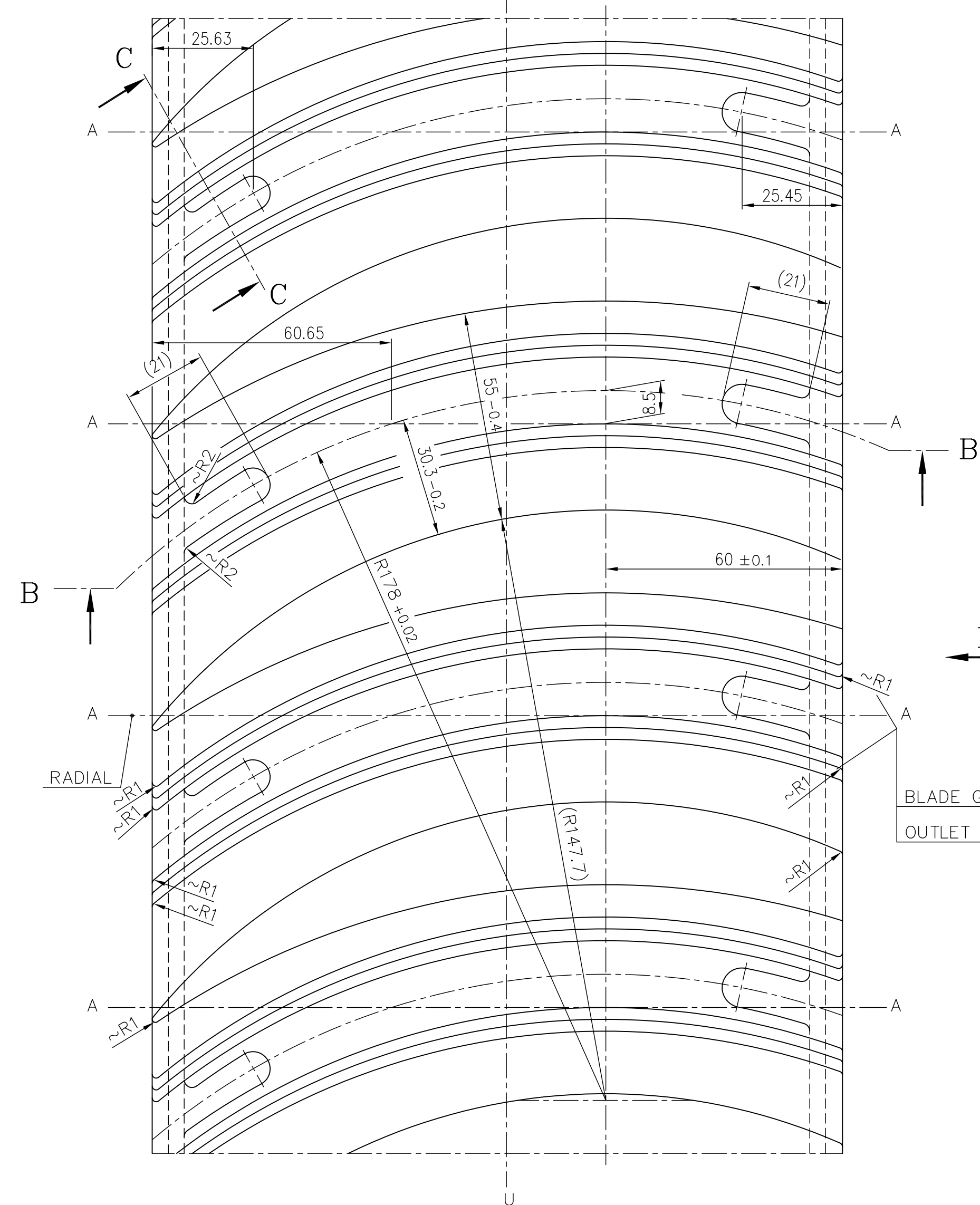


SECTION B-B

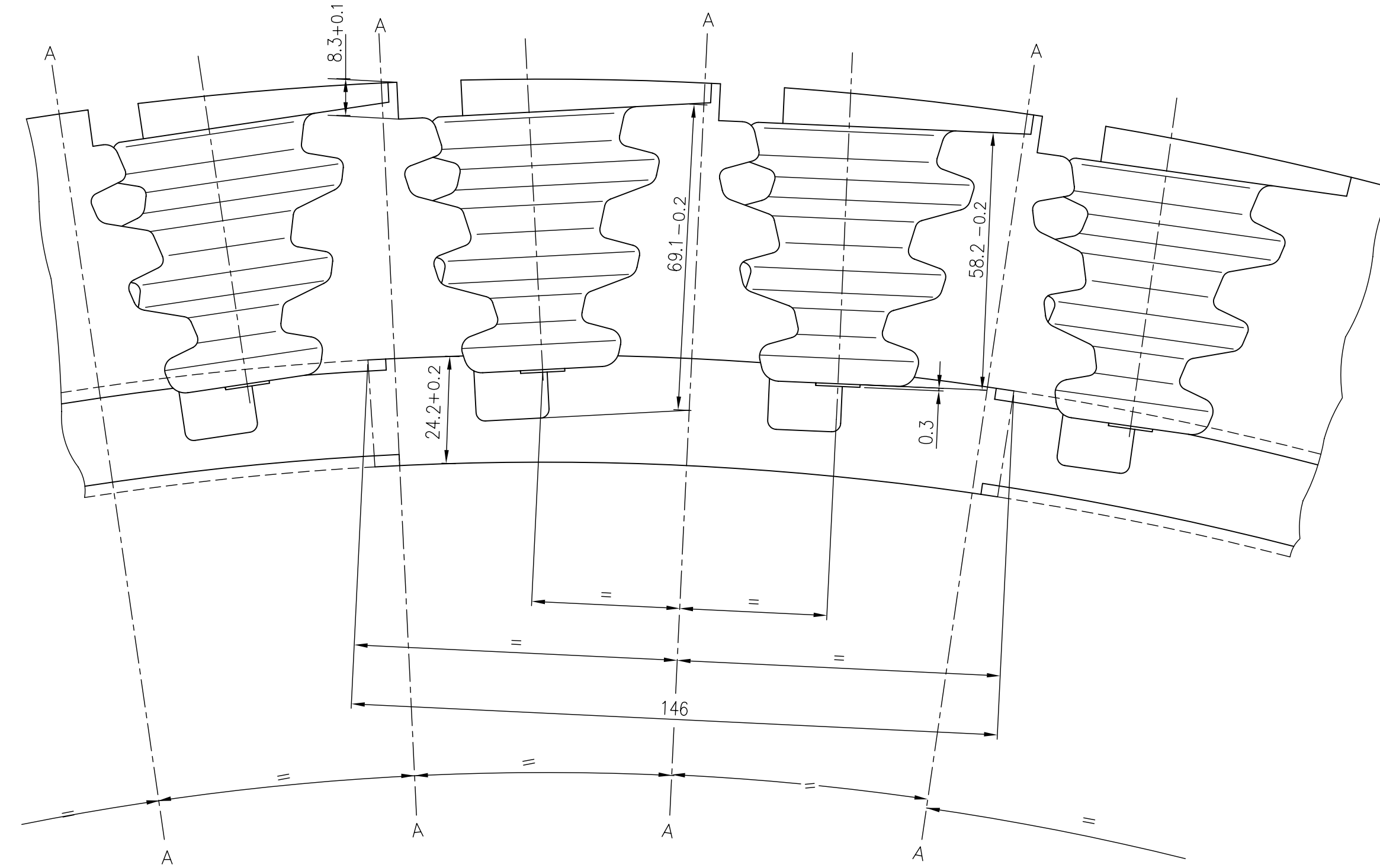


VIEW OF ROTOR GROOVE



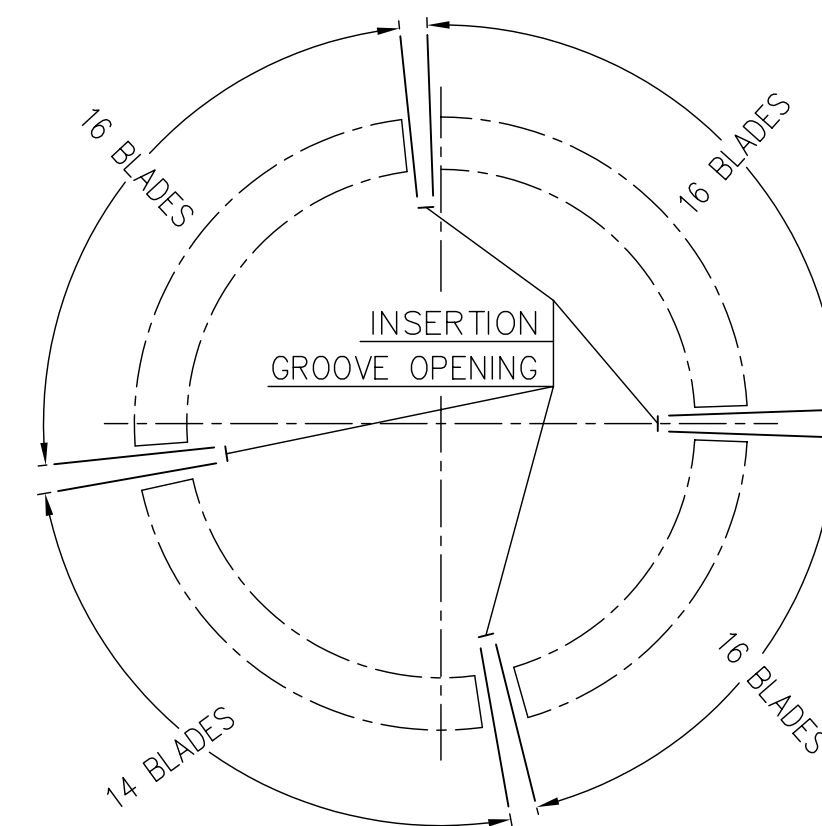
BLADE GROOVE EDGES AT THE INLET AND  
OUTLET ARE TO BE ROUNDED OFF R1<sup>0.8/</sup>

VIEW - X

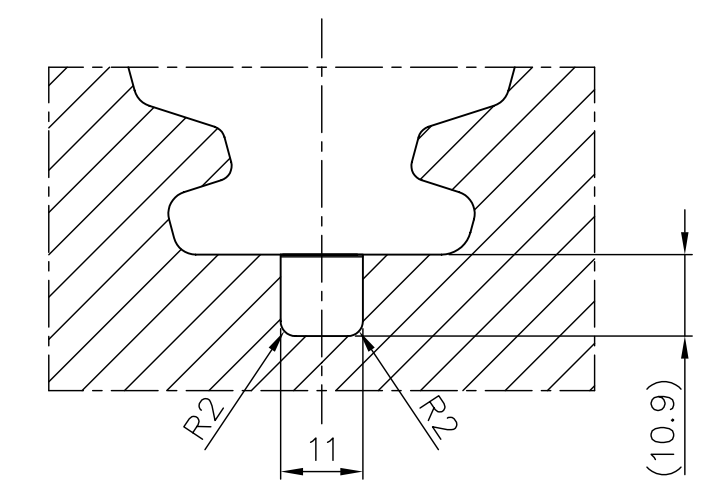


### POSITION OF INSERTION GROOVES

VIEW - Y



SECTION C-C





NOTES: —

1. ROOT AND GROOVE AS PER DRAWING NO: 2-303-22-00015-00  
(FORM-4)

-00	
AR.	

TYPE OF PRODUCT OR NAME OF CUSTOMER/PROJECT	
--	--

	BHARAT HEAVY ELECTRICALS LTD.		NAME	SIGNATURE	DATE	NO. OF VAR.
	HYDERABAD		DRN.	T.S.PRABHAKAR	15.09.08	NA
			CHD.	T.S.PRABHAKAR	15.09.08	
			APPD.	CNV RAMA	15.09.08	

DEPT. I.T.D.	UNTO. DIMS. GR.		SCALE	WEIGHT (KG)	REF. TO ASSY. DRG.	ITEM NO.	NO. OF ITEMS
DEPT. CODE 415	G.M.F.		1:1	NA	-N.A.-	-N.A.-	-N.A.-
TITLE				CARD CODE	DRAWING NO.		REV.
ROTOR GROOVE FOR MOVING BLADE				N.A.	1-103-07-62032		00
(N30 - 1 x 5.0 Sqm. - 3R)					SHT. No 01		No. of SHT. 01

THE INFORMATION ON THIS DOCUMENT IS THE PROPERTY OF BHARAT HEAVY ELECTRICALS LIMITED. IT MUST NOT BE USED DIRECTLY OR INDIRECTLY IN ANY WAY DETRIMENTAL TO THE INTEREST OF THE COMPANY

GENERAL DIMENSIONAL LIMITS, FITS & TOLERANCES AS PER HY0230261	1
--	---

INVENTORY NO

15-06-2009  
10:17:34

Printed by : L. RAMAIAH-HP6321 / 1813889-Tr1 on 20-08-09 08:06:52

*This Drawing is printed from Engineering Digital Archive System (EDAS).  
Therefore signatures are not essentially required.*