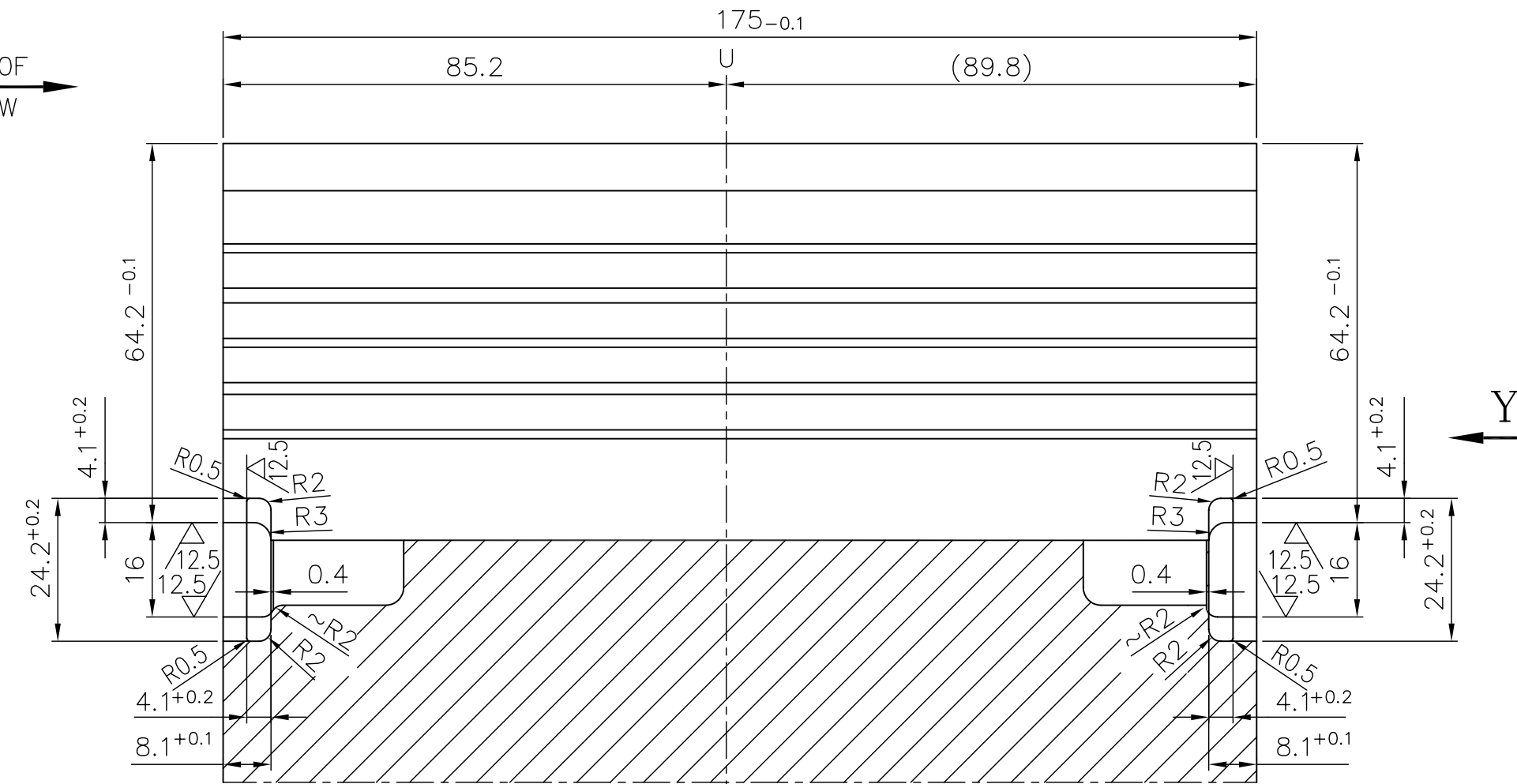
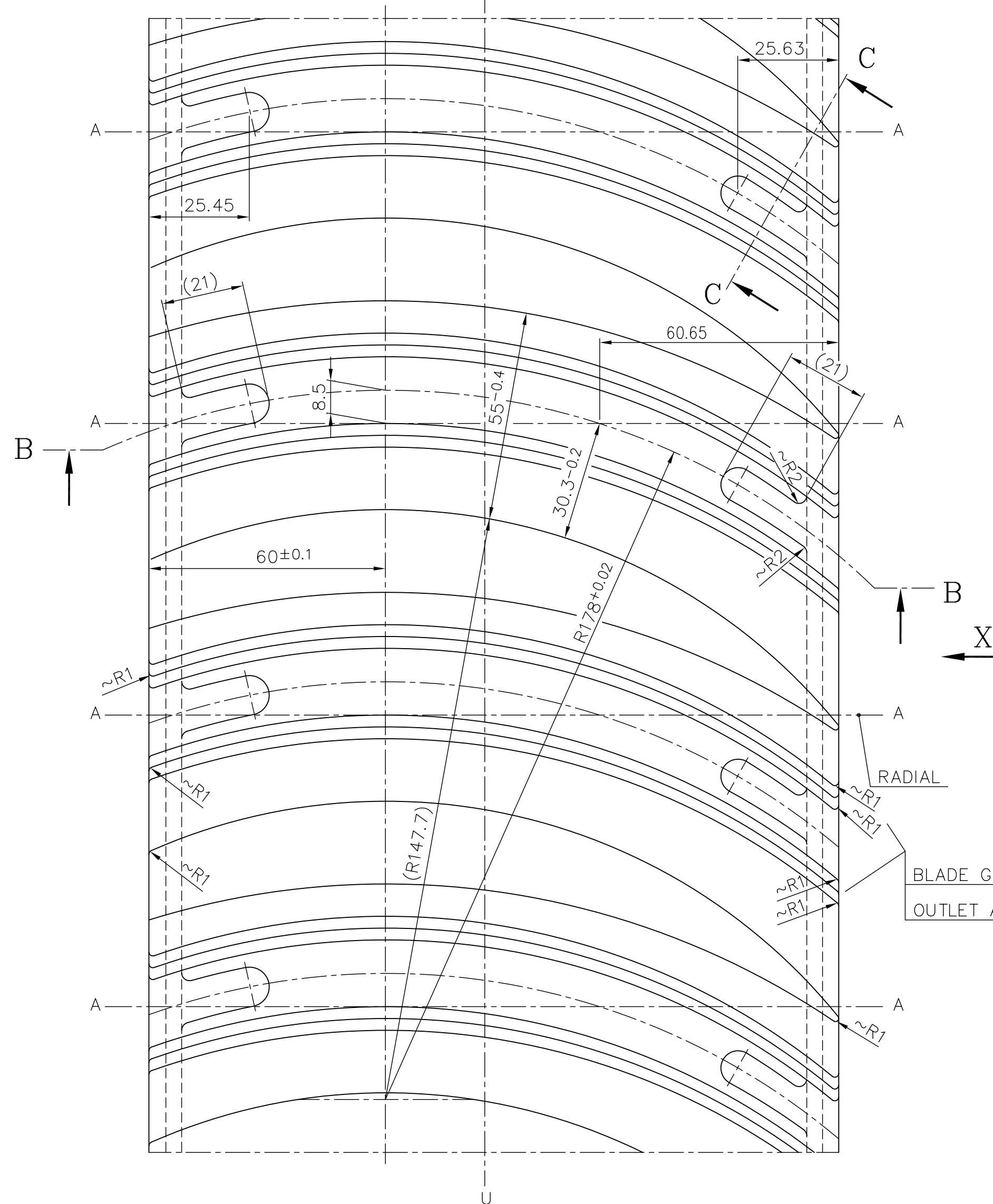


DIRECTION OF  
STEAM FLOW

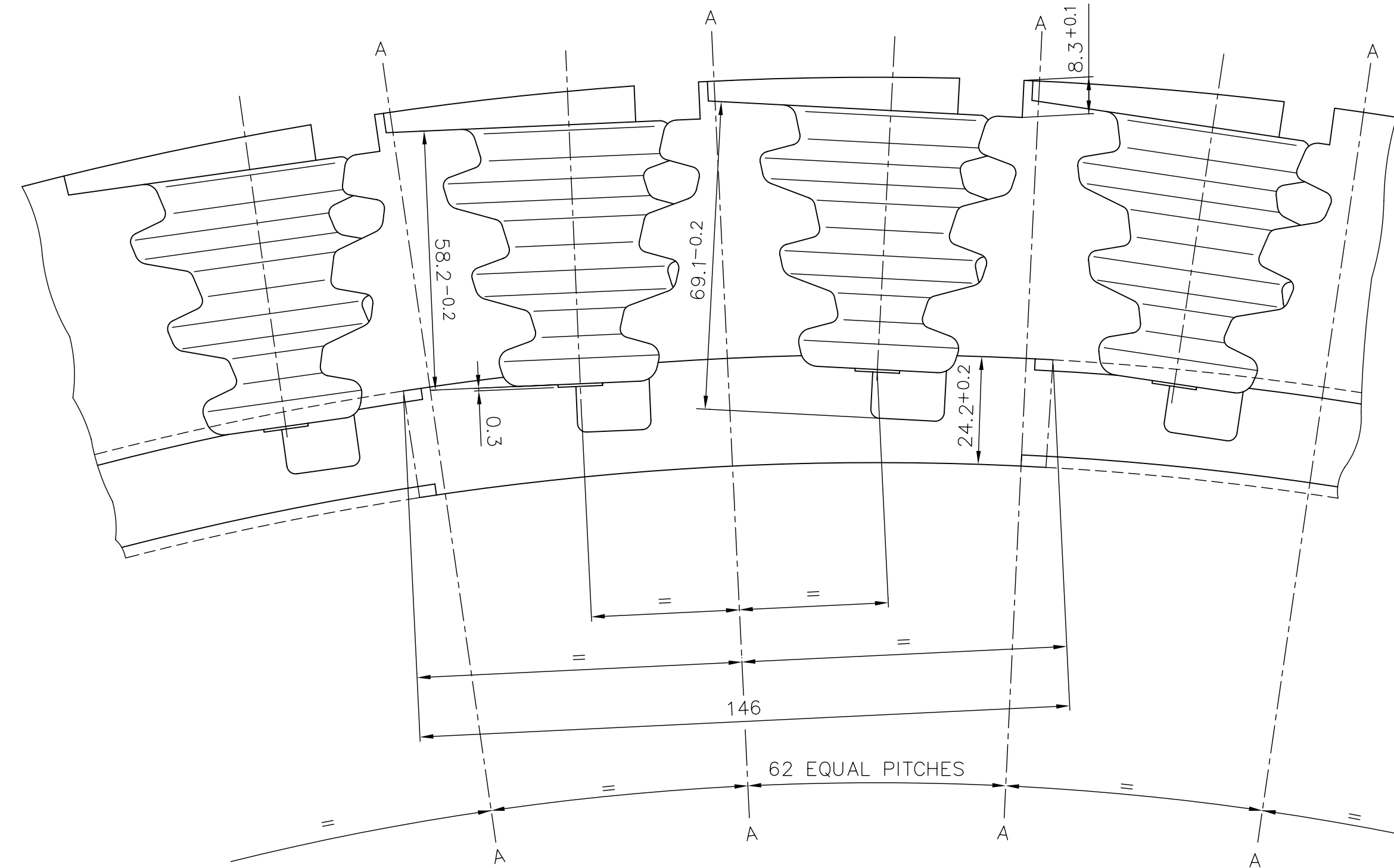


VIEW OF ROTOR GROOVE



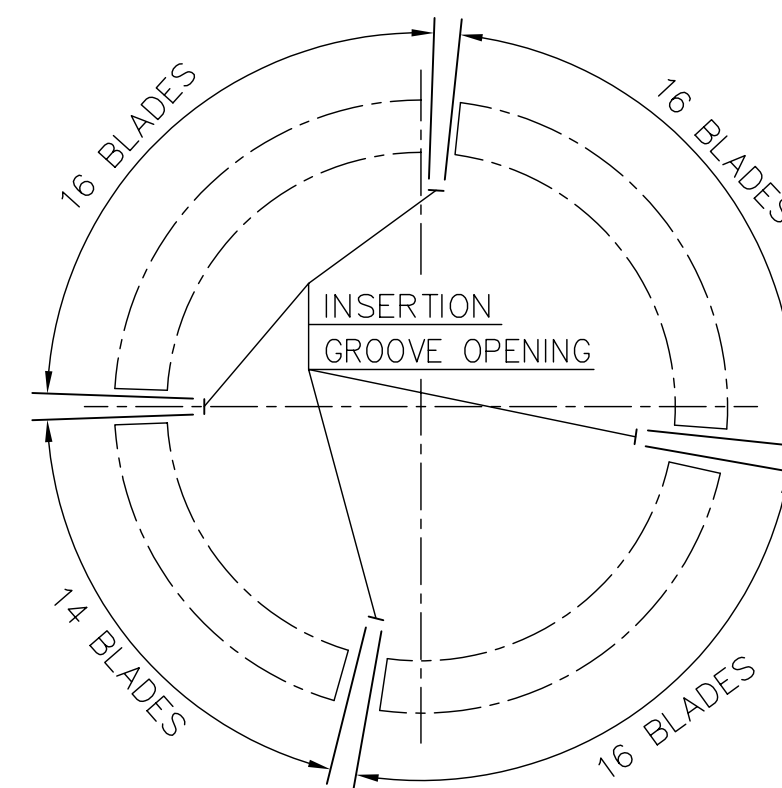
BLADE GROOVE EDGES AT THE INLET AND  
OUTLET ARE TO BE ROUNDED OFF R1 0.8

VIEW - X

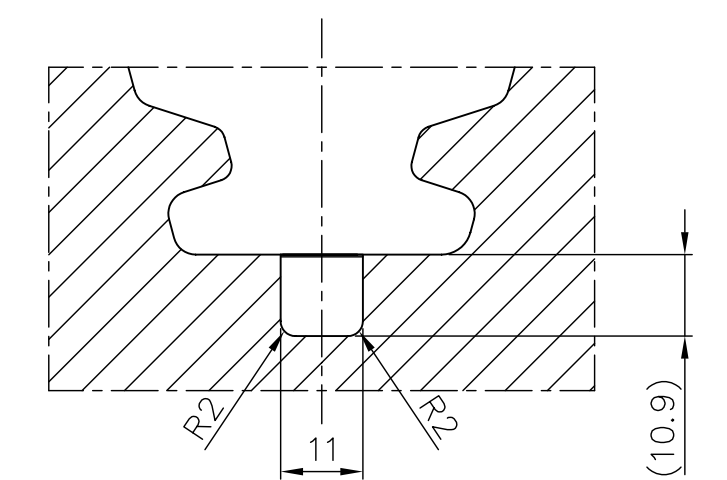


### POSITION OF INSERTION GROOVES

VIEW — Y





SECTION C-C



NOTES: —

1. ROOT AND GROOVE AS PER DRAWING NO: 2-303-22-00015-00

TYPE OF PRODUCT OR NAME OF CUSTOMER/PROJECT									
 BHARAT HEAVY ELECTRICALS LTD. HYDERABAD				NAME		SIGNATURE		DATE	
 SCALE 1:1				DRN. BICT/TVP		22.12.97		NO. OF VAR.	
				CHD. T.S.PRABHAKAR		22.12.97		NA	
				APPD. M.ROSIBABU		22.12.97		NA	
DEPT. L.T.D.		UNTOL. DIMS. GR.		WEIGHT (KG)		REF. TO ASSY. DRG.		ITEM NO.	
DEPT. CODE 415		SAFETY		NA		-N.A.-		-N.A.-	
TITLE				CARD CODE		DRAWING NO.		REV.	
ROTOR GROOVE FOR MOVING BLADE (N30 - 1 x 5.0 Sqm. - 3L)				N.A.		1-303-22-00009		00	
10				11		SHT. No 01		NO. OF SHT. 01	
						12			