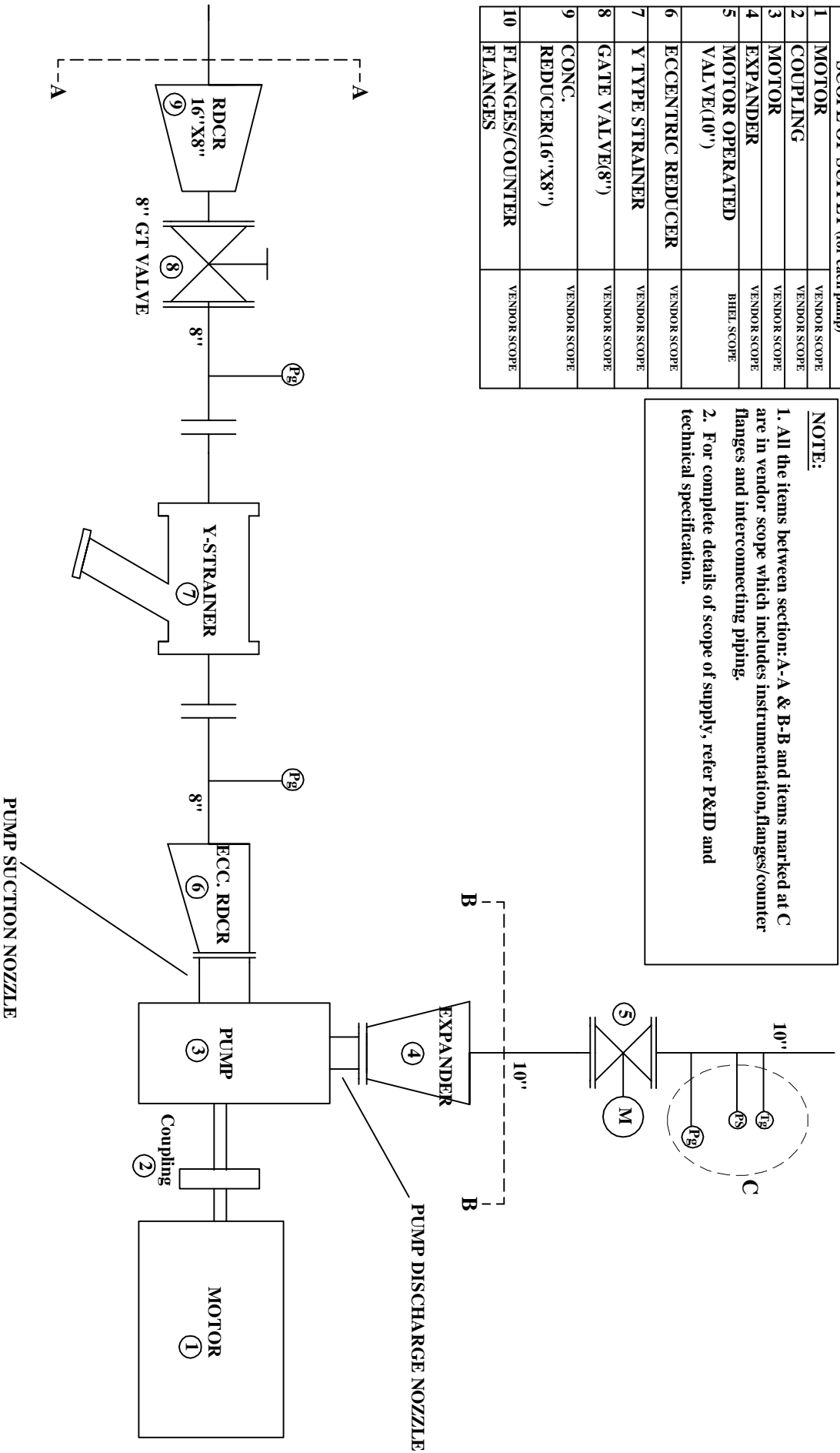


SCOPE OF SUPPLY (for each pump)	
1	MOTOR VENDOR SCOPE
2	COUPLING VENDOR SCOPE
3	MOTOR VENDOR SCOPE
4	EXPANDER VENDOR SCOPE
5	MOTOR OPERATED VALVE(10") BHEL SCOPE
6	ECCENTRIC REDUCER VENDOR SCOPE
7	Y TYPE STRAINER VENDOR SCOPE
8	GATE VALVE(8") VENDOR SCOPE
9	CONC. REDUCER(16"X8") VENDOR SCOPE
10	FLANGES/COUNTER FLANGES VENDOR SCOPE

NOTE:

- All the items between section: A-A & B-B and items marked at C are in vendor scope which includes instrumentation, flanges/counter flanges and interconnecting piping.
- For complete details of scope of supply, refer P&ID and technical specification.



P&ID DIAGRAM FOR CWP FOR 125T NBT-BHEL HYD