

Ref: BHE/PW/PUR/MADT1-STR U-4/1340/Corrigendum 03

Date 14/11/2014

To

ALL BIDDERS

Sub: Corrigendum-03: Issue of clarification.

JOB:

A) Supply Job:- Detailed drawing preparation and getting approval from BHEL PEM / NTPC, supply of finished product of bunker structures, raw coal bunkers, coal handling transfer points, coal conveyor galleries and its supporting trestle of bunker structures etc. at site of Unit # 4 of 2X660 MW NTPC MOUDA STPP STAGE II.

B) E & C Job:- Unloading, receipt & handling of finished material; pre assembly, erection, alignment, bolting/ welding/ fastening, grouting, testing, final painting and handing over of bunker structures, raw coal bunkers, coal handling transfer points, coal conveyor galleries and its supporting trestle of bunker structures etc. at site of Unit # 4 of 2X660 MW NTPC MOUDA STPP STAGE II.

Tender Specification: BHE/PW/PUR/MADT2-STR U # 4/1340

Bidders may take note of the following:

AA) Clarification to the Queries of bidders

Sl. No.	Bidder's Query	BHEL's clarification
1	As 100 % Steel materials supply is in contractor's scope. Whatever surplus/scrap/Temporary support etc material, which are left behind at site after completion of work will be contractors property and allowed to be taken back by the contractors. Please confirm.	Please Refer Chapter XIII 'Corrigendum to this specification' at Page 75 of Volume IA 'TCC: Point No 15 for the clarification.
2	Furnish Drawings for Bunker	Presently available GA Drawings are attached as file titled 'drawing 1340'. Further related drawings shall be furnished after finalization of contract.
3	Please Confirm whether this tender will go for reverse auction or not	Tender conditions shall remain unaltered. Price bid opening of techno-commercially qualified bidders shall either be through Conventional Sealed bid opening or through Reverse Auction at the sole discretion of BHEL and same shall be decided after techno-commercial evaluation.
4	Refer Clause 1 Note 5 of Chapter VII 'Terms of Payment' Confirm the requirement of Performance Bank Guarantee for 10 % of Contract Value and the validity of the same	Since the tender specification has the provision of Security Deposit and Retention amount as per the relevant clauses of GCC, provision of performance bank guarantee of 10 % of contract value is NOT APPLICABLE . Hence the portion of Note 5 at Clause 1 of Chapter VII 'Terms of Payment'

		<p>Vol IA TCC which states that “This bank guarantee will be in addition to Contract Performance Bank Guarantee for 10% of the contract value (excluding taxes, duties and freight)” STANDS DELETED.</p> <p>Bidders who have already submitted their offer may take cognizance of this clarification and in case they intend to change their price bids, same can be submitted on or before the due date of offer submission. Otherwise duly signed copy of this corrigendum shall be submitted before due date of offer submission as their unqualified acceptance to this corrigendum.</p>
5	<p>Refer Volume II ‘Price Bid Specification’ Item No 703 for Concreting of M25 Concrete in Section B ‘E&C Portion’</p> <p>Confirm that this item is excluding the cost of concrete & reinforcement. If yes then confirm that supply of cement and steel is in the scope of BHEL as free supply</p>	<p>All materials under the referred item is to be arranged by the bidder at their quoted price.</p>
6	<p>Refer Clause No 2.24.1 of Vol IC GCC: Confirm the date of commencement of Guarantee Period..</p>	<p>Guarantee Period for entire contract (both Supply Portion and E&C portion) shall commence from the ‘Work Completion Date’ certified by BHEL Engineer for ‘E&C Portion of Work’</p>
7	<p>In case all the items mentioned in Price Bid for Supply portion are supplied from outside Maharashtra. Kindly confirm whether Road Permit and C Forms shall be issued to against inter-state sale transaction and Sale Billing from more than one state shall be acceptable. Also confirm that no Work Contract Tax shall be deducted from such supply invoices.</p>	<ol style="list-style-type: none"> 1) Sale billing from more than one state is acceptable. However the VAT/CST, TIN number of bidder in respective state should be mentioned in the invoices. 2) C form shall be issued for all inter-state supplies and bidder to issue E-I/E-II form. 3) Road permit is not applicable in Maharashtra 4) WCT will not be recovered from Supply bills

Ref: BHE/PW/PUR/MADT1-STR U-4/1340/Corrigendum 03

Date 14/11/2014

=====
All other Terms and conditions of the Tender Specification shall remain unaltered unless expressly amended by BHEL in writing.

Bidders are requested to submit as a part of Technical Bid, a copy of this corrigendum duly countersigned by the authorized signatory and stamped with the Official seal as a token of Bidder's unqualified acceptance of this corrigendum.

This letter is hosted as file titled "Corrigendum-03 (Clarifications)" against NIT-19952 in BHEL web page (www.bhel.com→Tender Notifications → View Corrigendum).

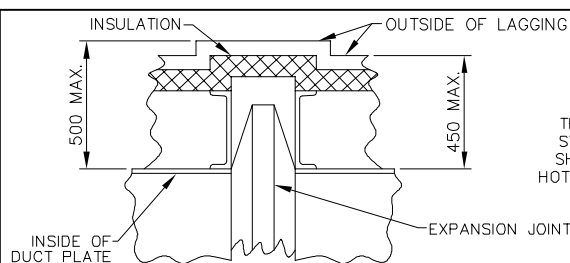
Thanking you,

Yours faithfully,

AGM (Purchase)

Enclosure:

1. Drawings 2 Nos



TYPICAL EXPANSION JOINT AND DUCT INSULATION WITH LAGGING
 THIS TYPICAL DETAIL INDICATES MAXIMUM DIMENSIONS INCLUDING STIFFENERS, INSULATION AND LAGGING FOR ALL HOT DUCTS AND SHOULD BE USED IN DETERMINING PROPER CLEARANCES OF BOTH HOT & COLD DUCTS FROM STRUCTURAL AND OTHER EQUIPMENT, ETC.

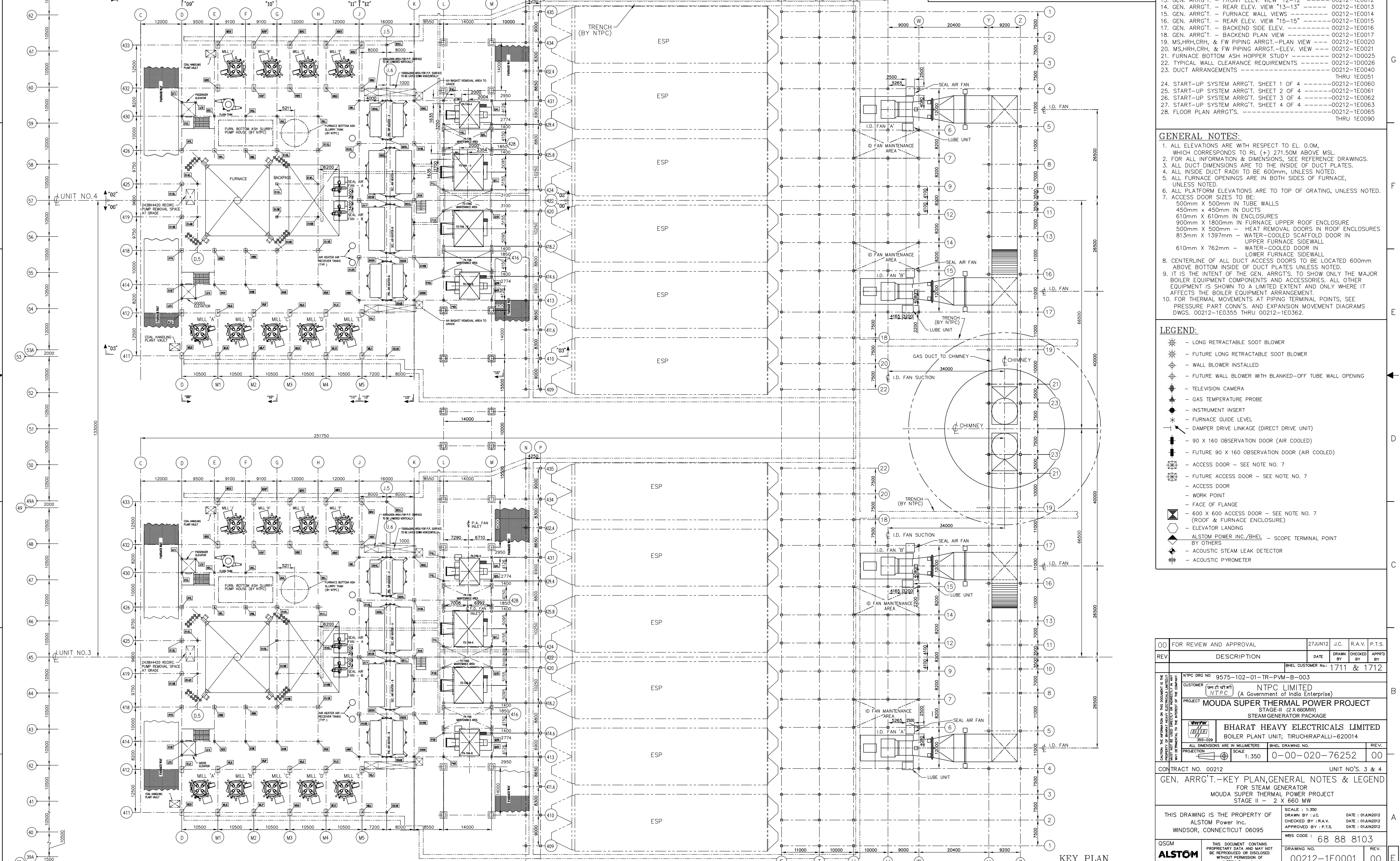
DESCRIPTION OF UNIT:
 1 - 660 MW (2120 T/HR) [4,629,660 LBS/HR] ONCE THROUGH SUPER CRITICAL, HAVING TWO PASS, SPIRAL WATER WALL TUBE, TOP SUPPORTED, SINGLE REHEAT, TANGENTIAL CORNER FIRED FURNACE WITH DIRECT PULVERIZED COAL FIRING, BALANCE DRAFT, RADIANT DRY BOTTOM, AND SUITABLE FOR OUTDOOR INSTALLATION
 FURNACE SIZE: 20726.4 WIDTH X 18592.8 DEPTH
 42.2 O.D. TUBES ON 54.0 CENTERS - FURNACE SPIRAL WALL
 38.1 O.D. TUBES ON 50.8 CENTERS - FURNACE VERTICAL WALL
 NON-PRESSURIZED ROOF ENCLOSURE
 FIRING EQUIPMENT: TT 812 WINDBOX
 PULVERIZED COAL; (9) HP1103 MILLS W/STATIC CLASSIFIERS

INDEX DRAWINGS:

1. PRESSURE PARTS ARRANGEMENTS	00212-1E0100
2. PIPING MISC. P.P. EQUIP.	00212-1E0300
3. PRESS. PARTS CONN.-EXP. MOVEMENT DIAG.	00212-1E0355
4. STRUCTURAL STEEL ARRANGEMENTS	00212-1E2001
5. DUCT ARRANGEMENTS	00212-1E2500
6. BUCKSTAY ARRANGEMENTS	00212-1E2901
7. P.P. HANGERS AND SUPPORTS ARRGT'S.	00212-1E3500
8. FUEL PIPE ARRANGEMENTS	00212-1E4000
9. WINDBOX ARRANGEMENTS	00212-1E4100
10. SEAL AIR SYSTEM PIPING ARRANGEMENT	00212-1E4408
11. SCANNER AIR SYSTEM ARRANGEMENT	00212-1E4410
12. P & ID'S	00212-1E8501
13. HP-1103 BOWL MILL ARRANGEMENT	E-PLVE-1003

REFERENCE DRAWINGS:

1. GEN. ARRGT. - SIDE ELEV. VIEW "00-00"	00212-1E0000
2. GEN. ARRGT. - KEY PLAN, GEN. NOTES & LEGEND	00212-1E0001
3. GEN. ARRGT. - SIDE ELEV. VIEW "02-02"	00212-1E0002
4. GEN. ARRGT. - SIDE ELEV. VIEW "03-03"	00212-1E0003
5. GEN. ARRGT. - PLAN VIEW "04-04"	00212-1E0004
6. GEN. ARRGT. - PLAN VIEW "05-05"	00212-1E0005
7. GEN. ARRGT. - PLAN VIEW "06-06"	00212-1E0006
8. GEN. ARRGT. - PLAN VIEW "07-07"	00212-1E0007
9. GEN. ARRGT. - PLAN VIEW "08-08"	00212-1E0008
10. GEN. ARRGT. - FRONT ELEV. VIEW "09-09"	00212-1E0009
11. GEN. ARRGT. - REAR ELEV. VIEW "10-10"	00212-1E0010
12. GEN. ARRGT. - REAR ELEV. VIEW "11-11"	00212-1E0011
13. GEN. ARRGT. - FRONT ELEV. VIEW "12-12"	00212-1E0012
14. GEN. ARRGT. - REAR ELEV. VIEW "13-13"	00212-1E0013
15. GEN. ARRGT. - FURNACE WALL VIEWS	00212-1E0014
16. GEN. ARRGT. - REAR ELEV. VIEW "15-15"	00212-1E0015
17. GEN. ARRGT. - BACKEND SIDE ELEV.	00212-1E0016
18. GEN. ARRGT. - REAR ELEV. VIEW	00212-1E0017
19. MS,HRH,CRH, & FW PIPING ARRGT.-PLAN VIEW	00212-1E0020
20. MS,HRH,CRH, & FW PIPING ARRGT.-ELEV. VIEW	00212-1E0021
21. FURNACE BOTTOM ASH HOPPER STUDY	00212-100025
22. TYPICAL WALL CLEARANCE REQUIREMENTS	00212-100026
23. DUCT ARRANGEMENTS	00212-1E0040



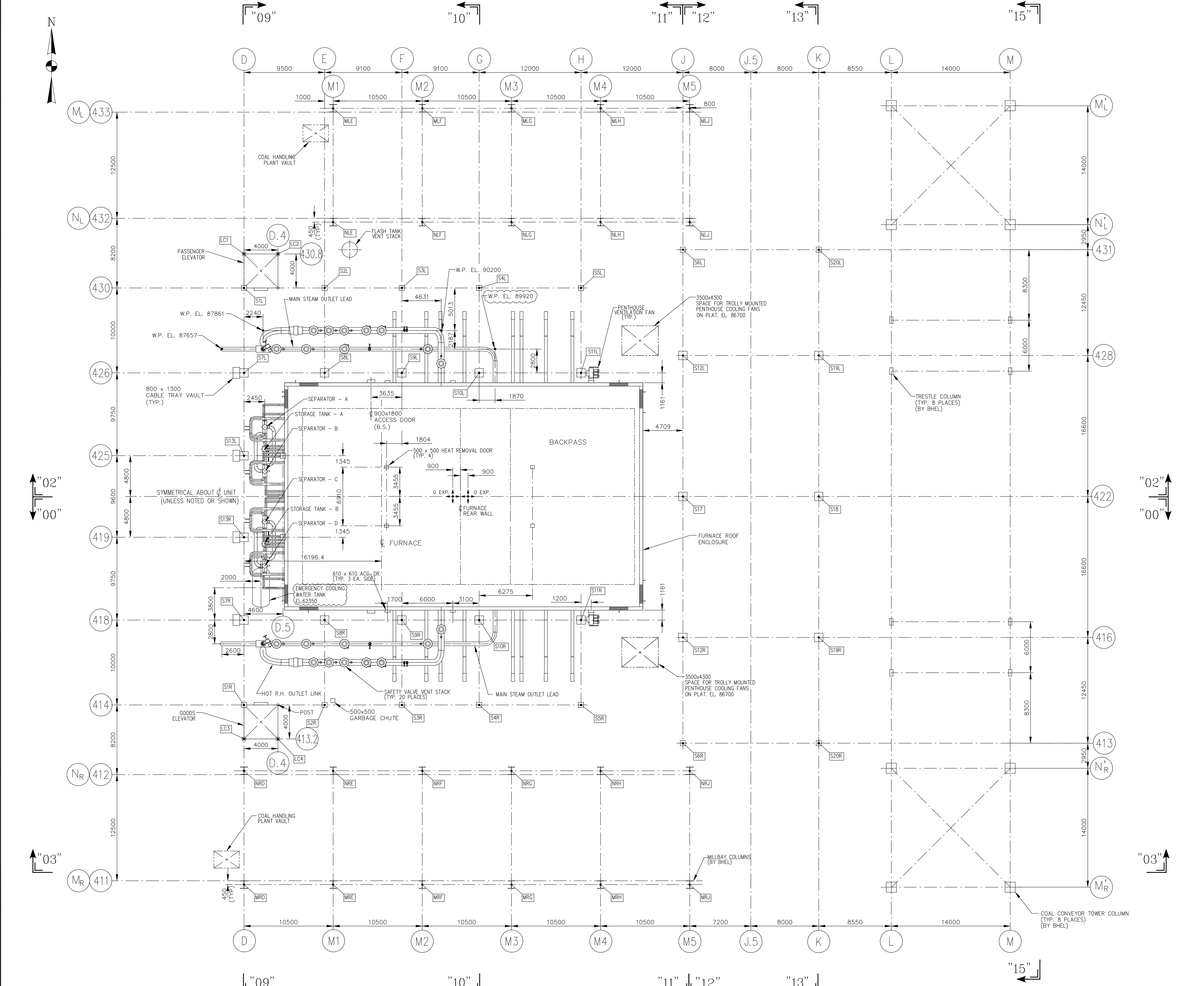
GENERAL NOTES:

- ALL ELEVATIONS ARE WITH RESPECT TO EL. 0.0M, WHICH CORRESPONDS TO RL (+) 271.50M ABOVE MSL.
- FOR ALL INFORMATION & DIMENSIONS, SEE REFERENCE DRAWINGS.
- ALL DUCT DIMENSIONS ARE TO THE INSIDE OF DUCT PLATES.
- ALL INSIDE DUCT RADI TO BE 600mm, UNLESS NOTED.
- ALL FURNACE OPENINGS ARE IN BOTH SIDES OF FURNACE, UNLESS NOTED.
- ALL PLATFORM ELEVATIONS ARE TO TOP OF GRATING, UNLESS NOTED.
- ACCESS DOOR SIZES TO BE:
 - 500mm X 500mm IN TUBE WALLS
 - 450mm X 450mm IN DUCTS
 - 610mm X 610mm IN ENCLOSURES
 - 900mm X 1800mm IN FURNACE UPPER ROOF ENCLOSURE
 - 500mm X 500mm HEAT REMOVAL DOORS IN ROOF ENCLOSURES
 - 813mm X 1397mm - WATER-COOLED SCAFFOLD DOOR IN UPPER FURNACE SIDEWALL
 - 610mm X 762mm - WATER-COOLED DOOR IN LOWER FURNACE SIDEWALL
- CENTRELINE OF ALL DUCT ACCESS DOORS TO BE LOCATED 600mm ABOVE BOTTOM INSIDE OF DUCT PLATES UNLESS NOTED.
- IT IS THE INTENT OF THE GEN. ARRGT'S. TO SHOW ONLY THE MAJOR BOILER EQUIPMENT COMPONENTS AND ACCESSORIES, ALL OTHER EQUIPMENT IS SHOWN TO A LIMITED EXTENT AND ONLY WHERE IT AFFECTS THE BOILER EQUIPMENT ARRANGEMENT.
- FOR THERMAL MOVEMENTS AT PIPING TERMINAL POINTS, SEE PRESSURE PART CONN'S. AND EXPANSION MOVEMENT DIAGRAMS DWGS. 00212-1E0355 THRU 00212-1E0362.

LEGEND:

- LONG RETRACTABLE SOOT BLOWER
- FUTURE LONG RETRACTABLE SOOT BLOWER
- WALL BLOWER INSTALLED
- FUTURE WALL BLOWER WITH BLANKED-OFF TUBE WALL OPENING
- TELEVISION CAMERA
- GAS TEMPERATURE PROBE
- INSTRUMENT INSERT
- FURNACE GUIDE LEVEL
- DAMPER DRIVE LINKAGE (DIRECT DRIVE UNIT)
- 90 X 160 OBSERVATION DOOR (AIR COOLED)
- FUTURE 90 X 160 OBSERVATION DOOR (AIR COOLED)
- ACCESS DOOR - SEE NOTE NO. 7
- ACCESS DOOR
- WORK POINT
- FACE OF FLANGE
- 600 X 600 ACCESS DOOR - SEE NOTE NO. 7 (ROOF & FURNACE ENCLOSURE)
- ELEVATOR LANDING
- ALSTOM POWER INC./BHEL - SCOPE TERMINAL POINT BY OTHERS
- ACOUSTIC STEAM LEAK DETECTOR
- ACOUSTIC PYROMETER

00 FOR REVIEW AND APPROVAL	27 JUN 12	J.C.	R.A.V.	P.T.S.	
REV	DESCRIPTION	DATE	DRAWN BY	CHECKED BY	APPROV BY
					1711 & 1712
NTPC DRG NO 9575-102-01-TR-PVM-B-003 CUSTOMER: NTPC LIMITED (A Government of India Enterprise) PROJECT: MOUDA SUPER THERMAL POWER PROJECT STAGE-II (2 X 660MW) STEAM GENERATOR PACKAGE BHARAT HEAVY ELECTRICALS LIMITED BOILER PLANT UNIT; TRUCHIRAPALLI-620014 ALL DIMENSIONS ARE IN MILLIMETERS SCALE: 1:350 BHEL DRAWING NO. 00-00-020-76252 REV. 00					
CONTRACT NO. 00212 UNIT NO'S. 3 & 4 GEN. ARRGT.-KEY PLAN, GENERAL NOTES & LEGEND FOR STEAM GENERATOR MOUDA SUPER THERMAL POWER PROJECT STAGE II - 2 X 660 MW					
THIS DRAWING IS THE PROPERTY OF ALSTOM Power Inc. WINDSOR, CONNECTICUT 06095 SCALE: 1:350 DRAWN BY: J.C. CHECKED BY: R.A.V. APPROVED BY: P.T.S. DATE: 01/JUN/2012 DATE: 01/JUN/2012 DATE: 01/JUN/2012 MBS CODE: 68 88 8103					
QSGM	THIS DOCUMENT CONTAINS PROPRIETARY DATA AND MAY NOT BE REPRODUCED OR DISCLOSED WITHOUT PERMISSION OF ALSTOM Power Inc.				REV.
ALSTOM	DRAWING NO. 00212-1E0001				00



PLAN SECTION "08-08"
(TAKEN AT EL. 94000)

- NOTES:**
- FOR GENERAL NOTES, REFERENCE DRAWINGS, LEGEND, ETC. SEE DWG. No. 00212-1E0001
NTPC DRAWING NO. 9575-102-01-TR-PVM-B-0764.
 - THIS DRAWING IS NOT SHOWING LIE/LIR AND C&I EQUIPMENTS. THE SAME WILL BE COVERED IN SEPARATE DRAWINGS:
ALSTOM DRAWING NO'S: 00212-1E0065 THRU 00212-1E0090.
NTPC DRAWING NO'S: 9575-102-01-TR-PVM-B-0775-(SH.1 THRU 26).

03	ISSUED AS NOTED	03JUNE13	BRAHMA	H.P.	P.S.
02	ISSUED AS NOTED	08FEB13	E.P.	H.P.	P.S.
01	ISSUED AS FINAL	07SEP12	N.K.	H.P.	P.S.
00	FOR REVIEW AND APPROVAL	27JUN12	J.C.	R.A.V.	P.T.S.
REV	DESCRIPTION	DATE	DRAWN BY	CHECKED BY	APPROV'D BY
					1711 & 1712
NTPC DRG NO 9575-102-01-TR-PVM-B-0763-SH5					
CUSTOMER NTPC LIMITED (A Government of India Enterprise)					
PROJECT MOUDA SUPER THERMAL POWER PROJECT STAGE-II (2 X 660MW) STEAM GENERATOR PACKAGE					
PRODUCTION ALL DIMENSIONS ARE IN MILLIMETERS BHEL DRAWING NO. 0-00-022-76245 03					
SCALE: 1:150					
CONTRACT NO. 00212 UNIT NO'S. 3 & 4					
GENERAL ARRANGEMENT - PLAN SECTION "08-08" FOR STEAM GENERATOR MOUDA SUPER THERMAL POWER PROJECT STAGE II - 2 X 660 MW					
THIS DRAWING IS THE PROPERTY OF ALSTOM Power Inc. WINDSOR, CONNECTICUT 06095			SCALE: 1:150 DATE: 01JUN2012 DRAWN BY: J.C. CHECKED BY: R.A.V. APPROVED BY: P.T.S.		
WBS CODE: 68 88 8103			REV. 03		
ALSTOM					