

Ref: BHE/PW/PUR/WNT2-ENB PEB 2/1416/Corrigendum 01

Date 11/03/2015

To

ALL BIDDERS

Sub: Corrigendum-01: Tender Drawings.

JOB:

TENDER NUMBER: BHE/PW/PUR/WNT2-ENB PEB 2/1416

Job: CONSTRUCTION OF CIVIL FOUNDATIONS ALONG WITH ITS ELECTRIFICATION AT 1X 800 MW WANAKBORI SITE FOR THREE NUMBERS OF EXISTING PEB CLOSED STORE SHEDS (DISMANTABLE TYPE) OF SIZE 60MX15M PRESENTLY AT DB POWER WHICH IS TO BE TRANSFERRED TO WANAKBORI SITE.

Bidders to kindly take note of the following:

=====
AA) Drawings

Drawings are attached herewith.
=====

All other Terms and conditions of the Tender Specification shall remain unaltered unless expressly amended by BHEL in writing.

Bidders are requested to submit as a part of Technical Bid, a copy of this corrigendum duly countersigned by the authorized signatory and stamped with the Official seal as a token of Bidder's unqualified acceptance of this corrigendum.

This letter is hosted as file titled "Corrigendum-01 (Time Extn-1416)" against NIT-21673 in BHEL web page (www.bhel.com→Tender Notifications → View Corrigendum).

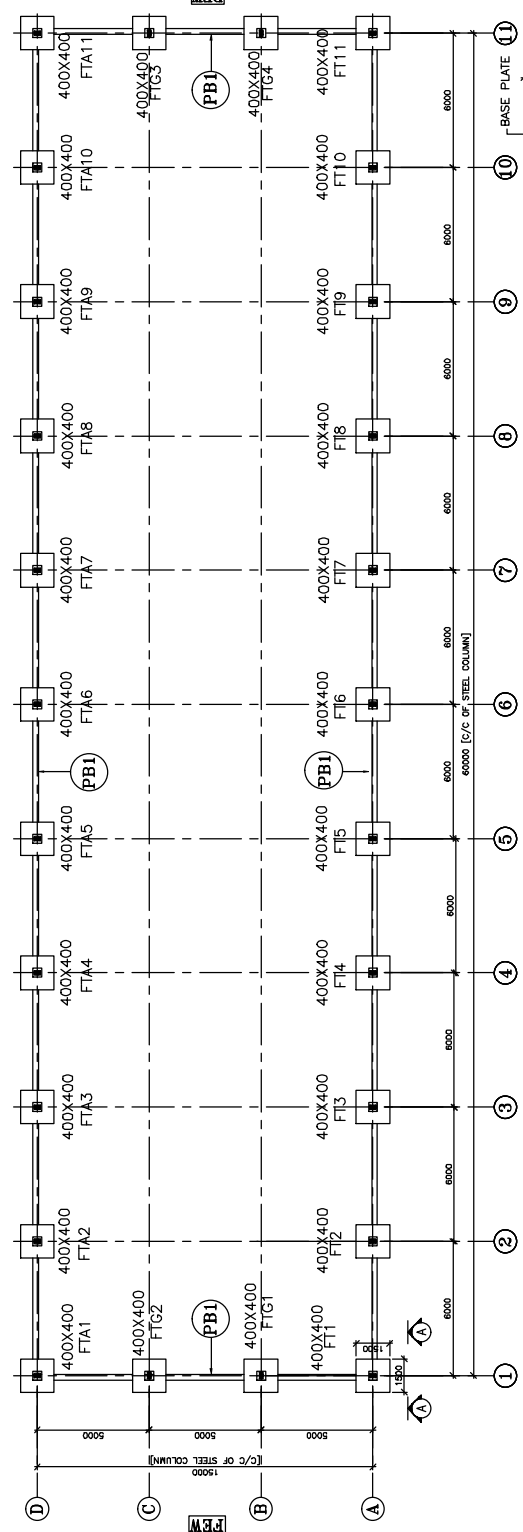
Thanking you,

Yours faithfully,

AGM (Purchase)

THE INFORMATION ON THIS DOCUMENT IS THE PROPERTY OF NEW LIFE STEEL STRUCTURES. IT MUST NOT BE USED DIRECTLY OR INDIRECTLY IN ANY WAY DETRIMENTAL TO THE INTEREST OF THE COMPANY.

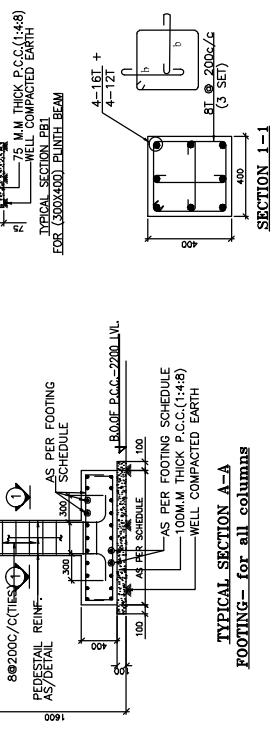
NSW



COLUMN LAY OUT & FOUNDATION PLAN OF CLOSED SHED

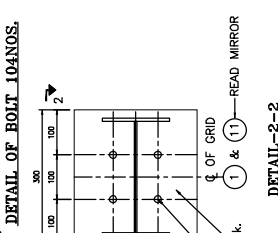
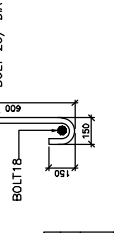
FOOTING DETAIL CONC MIX. (M-20)

SR/NO.	FOOTING SIZE	REINFORCEMENT	TOP REINP.	BOTTOM REINP.
F1	1500x1500	10Ø200 C/C BOTHWAYS	12Ø200 C/C BOTHWAYS	



TYPICAL SECTION A-A FOOTING - for all columns

DETAIL OF BOLT 10ANOS.



DETAIL 1-1

IF ANY DOUBT ASK.

ANY DISCREPANCY IF THERE SHOULD BE BROUGHT TO OUR NOTICE BEFORE EXECUTION USE M-20 GRADE CONCRETE

STAMP AND SIGN

- NOTES**
1. ALL DIMENSIONS ARE IN MILLIMETERS & ALL UNITS ARE IN METERS UNLESS OTHERWISE SPECIFIED.
 2. ALL DIMENSIONS ARE TO FACE UNLESS OTHERWISE SPECIFIED.
 3. ALL DIMENSIONS ARE TO FACE UNLESS OTHERWISE SPECIFIED.
 4. ALL DIMENSIONS ARE TO FACE UNLESS OTHERWISE SPECIFIED.
 5. ALL DIMENSIONS ARE TO FACE UNLESS OTHERWISE SPECIFIED.
 6. ALL DIMENSIONS ARE TO FACE UNLESS OTHERWISE SPECIFIED.
 7. ALL DIMENSIONS ARE TO FACE UNLESS OTHERWISE SPECIFIED.
 8. ALL DIMENSIONS ARE TO FACE UNLESS OTHERWISE SPECIFIED.
 9. ALL DIMENSIONS ARE TO FACE UNLESS OTHERWISE SPECIFIED.
 10. ALL DIMENSIONS ARE TO FACE UNLESS OTHERWISE SPECIFIED.
 11. ALL DIMENSIONS ARE TO FACE UNLESS OTHERWISE SPECIFIED.
 12. ALL DIMENSIONS ARE TO FACE UNLESS OTHERWISE SPECIFIED.

- LEGEND**
- 1. UN-DEVELOPMENT LENGTH
 - 2. TOP OF STEEL
 - 3. TOP OF CONCRETE
 - 4. TOP-TOP OF BEAM
 - 5. MID-SECTION OF BEAM
 - 6. BOTTOM-TOP OF BEAM
 - 7. FINISH FLOOR FINISH
 - 8. FINISH FLOOR FINISH
 - 9. FINISH FLOOR FINISH
 - 10. FINISH FLOOR FINISH
 - 11. FINISH FLOOR FINISH
 - 12. FINISH FLOOR FINISH

- REINFORCEMENT**
- 1. 400X400
 - 2. 400X400
 - 3. 400X400
 - 4. 400X400
 - 5. 400X400
 - 6. 400X400
 - 7. 400X400
 - 8. 400X400
 - 9. 400X400
 - 10. 400X400
 - 11. 400X400
 - 12. 400X400

- REINFORCEMENT**
- 1. 400X400
 - 2. 400X400
 - 3. 400X400
 - 4. 400X400
 - 5. 400X400
 - 6. 400X400
 - 7. 400X400
 - 8. 400X400
 - 9. 400X400
 - 10. 400X400
 - 11. 400X400
 - 12. 400X400

- REINFORCEMENT**
- 1. 400X400
 - 2. 400X400
 - 3. 400X400
 - 4. 400X400
 - 5. 400X400
 - 6. 400X400
 - 7. 400X400
 - 8. 400X400
 - 9. 400X400
 - 10. 400X400
 - 11. 400X400
 - 12. 400X400

- REINFORCEMENT**
- 1. 400X400
 - 2. 400X400
 - 3. 400X400
 - 4. 400X400
 - 5. 400X400
 - 6. 400X400
 - 7. 400X400
 - 8. 400X400
 - 9. 400X400
 - 10. 400X400
 - 11. 400X400
 - 12. 400X400

- REINFORCEMENT**
- 1. 400X400
 - 2. 400X400
 - 3. 400X400
 - 4. 400X400
 - 5. 400X400
 - 6. 400X400
 - 7. 400X400
 - 8. 400X400
 - 9. 400X400
 - 10. 400X400
 - 11. 400X400
 - 12. 400X400

- REINFORCEMENT**
- 1. 400X400
 - 2. 400X400
 - 3. 400X400
 - 4. 400X400
 - 5. 400X400
 - 6. 400X400
 - 7. 400X400
 - 8. 400X400
 - 9. 400X400
 - 10. 400X400
 - 11. 400X400
 - 12. 400X400

- REINFORCEMENT**
- 1. 400X400
 - 2. 400X400
 - 3. 400X400
 - 4. 400X400
 - 5. 400X400
 - 6. 400X400
 - 7. 400X400
 - 8. 400X400
 - 9. 400X400
 - 10. 400X400
 - 11. 400X400
 - 12. 400X400

- REINFORCEMENT**
- 1. 400X400
 - 2. 400X400
 - 3. 400X400
 - 4. 400X400
 - 5. 400X400
 - 6. 400X400
 - 7. 400X400
 - 8. 400X400
 - 9. 400X400
 - 10. 400X400
 - 11. 400X400
 - 12. 400X400

- REINFORCEMENT**
- 1. 400X400
 - 2. 400X400
 - 3. 400X400
 - 4. 400X400
 - 5. 400X400
 - 6. 400X400
 - 7. 400X400
 - 8. 400X400
 - 9. 400X400
 - 10. 400X400
 - 11. 400X400
 - 12. 400X400

NO.	ISSUED FOR APPROVAL	DATE	DRAWN	CHECKED	AMOUNT	DATE	FILE	SHEET	OF
1		25.01.11							

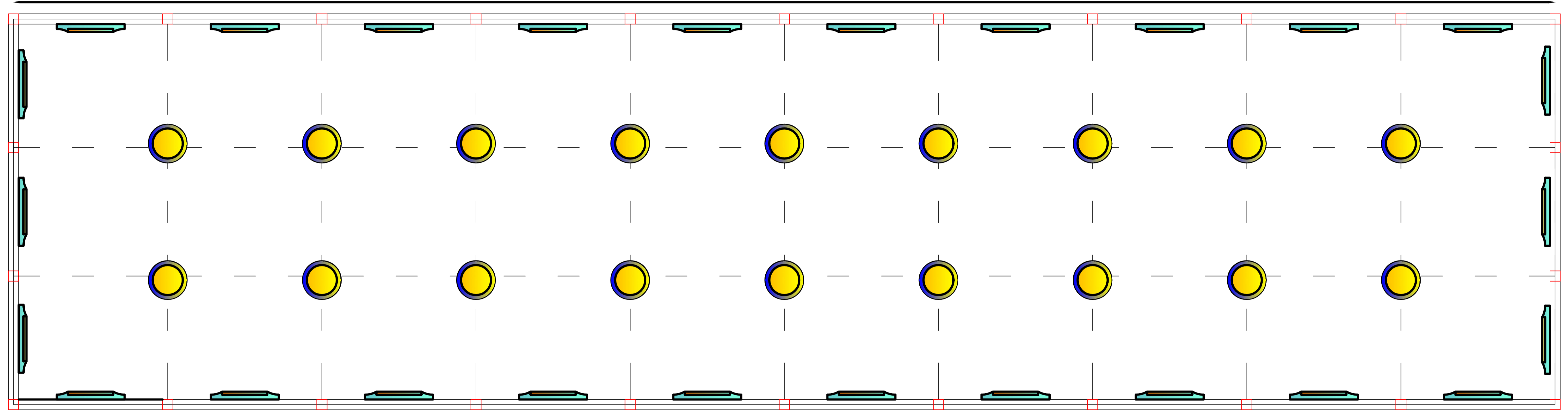
NOTE:- PLEASE REFER DWG.NOS. FT/POR(rev)-02 FOR DIRECTION OF F. BOLTS & BASE PLATE

FRAMING PLAN AT FOUNDATION
SIZE-15m x 60m x 5.25m HI.
NEW LIFE STEEL STRUCTURES

BHE/PW/ENB/SH/EL-01

60M

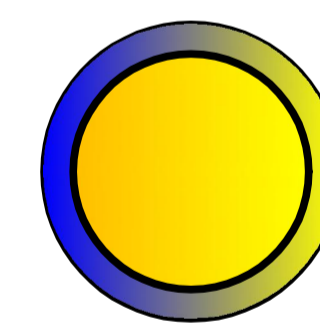
15M



--- Axis of Truss / Portal Frame

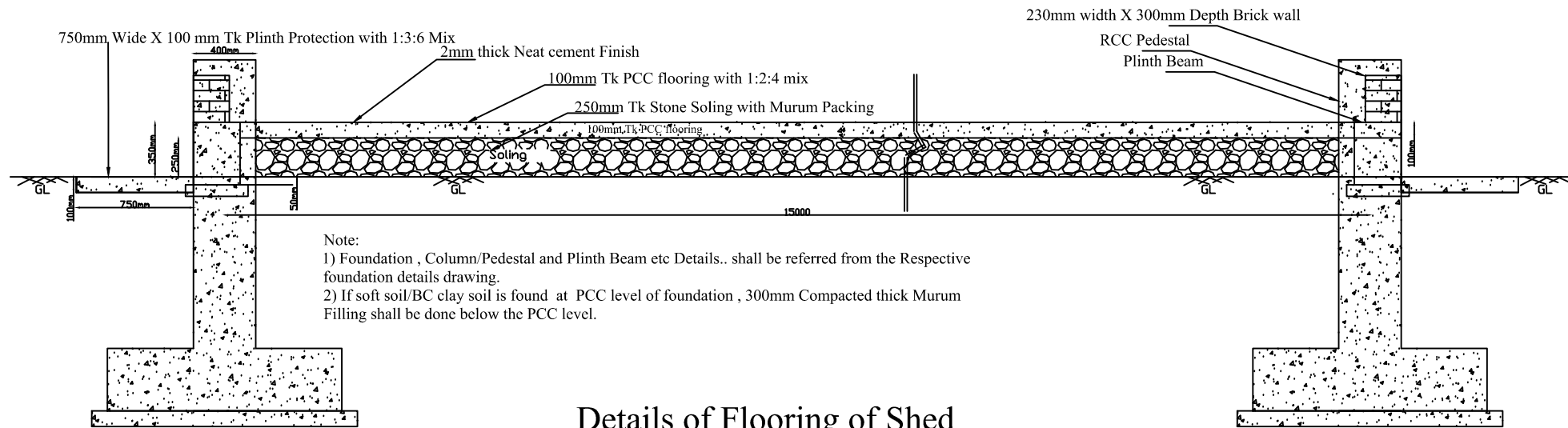


Ordinary Tube Light



Aluminum Dispersive Luminaries.
(Hanging Type)

Tentative Layout for Electrical Lighting Fittings in storage shed



Details of Flooring of Shed