

**OPEN TENDER FOR COMPRESSED AIR SYSTEM OF 2X660 MW ENNORE SEZ STPP**

Ref No. : PE/PG/EN1/E-4829/2015/04

Date: 22.07.2015

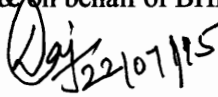
**CORRIGENDUM/ ADDENDUM-4**

**Ref: Our Tender Enquiry No. E-4829/2015 dated 12.05.2015 for COMPRESSED AIR SYSTEM for 2X660MW ENNORE SEZ STPP**

This is in reference to the subject Tender Enquiry please find enclosed GA Drawing of motor.

Thanking You,

With Regards,  
For & on behalf of BHEL



Rajeev Kumar  
Sr.Engineer/PG-II-2

**Enclosure -**

- GA drawing of motor

Please reply to:  
Rajeev Kumar (Sr.Engr/PG-II-2)  
Power Project Engineering Institute Building  
HRD & ESI Complex Plot No. 25, Sector -16 A,  
BHEL-PEM,Noida-201301 (U.P.)  
Tel No. 0120-4213582

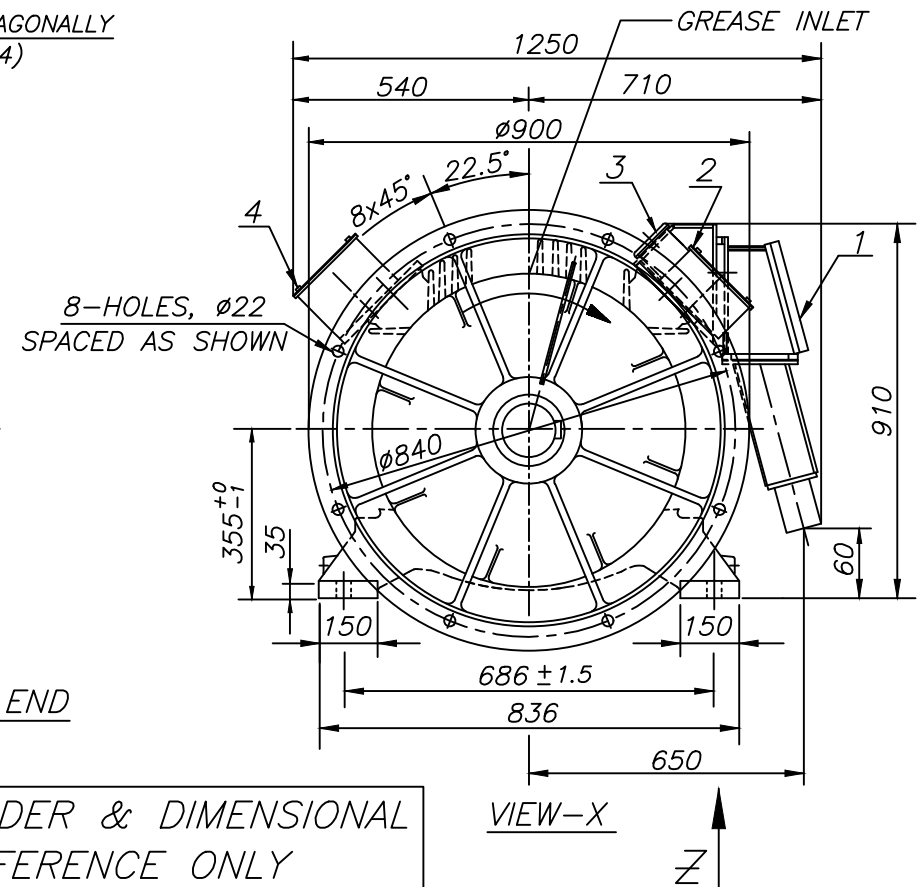
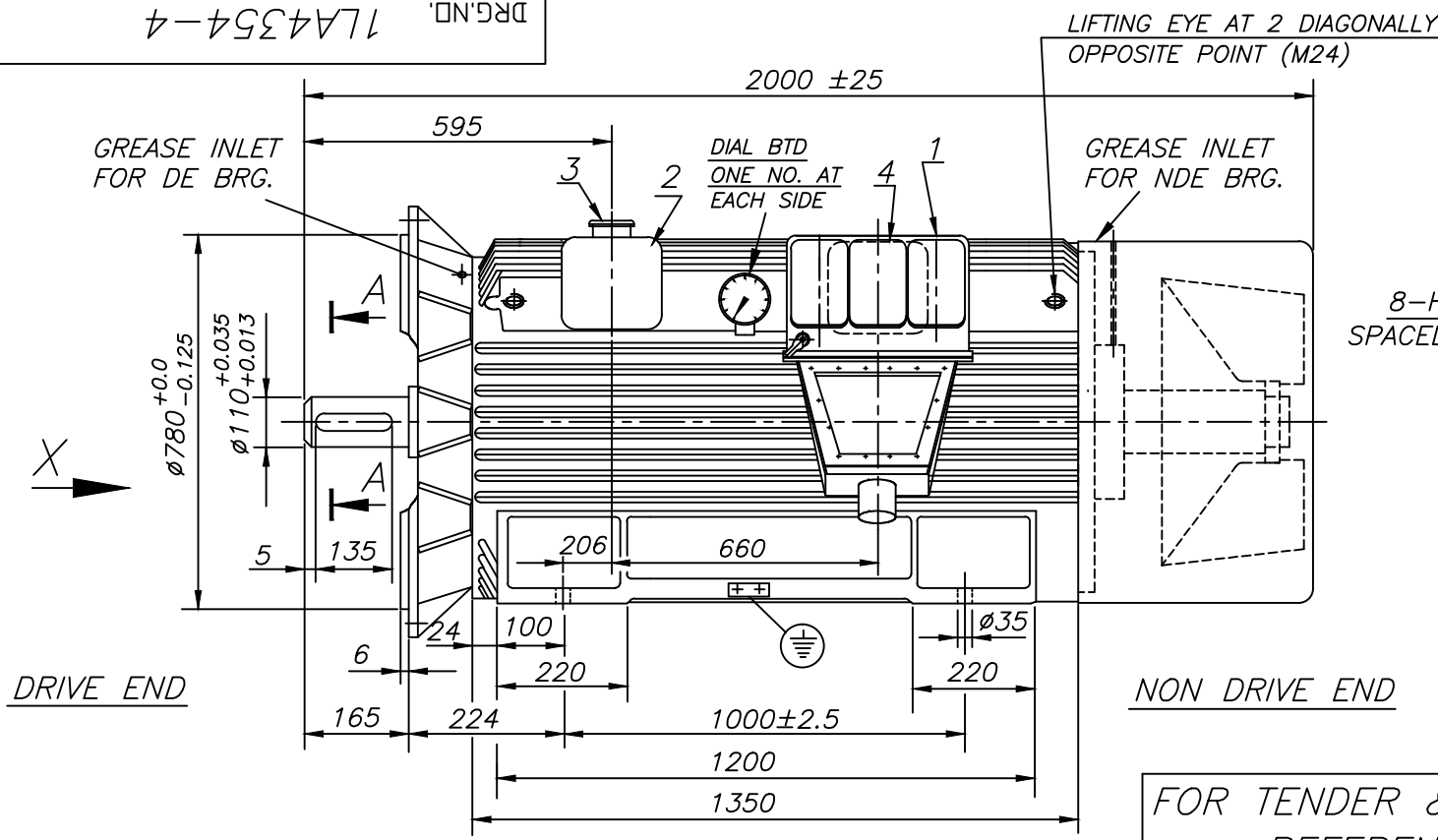
THE INFORMATION ON THIS DOCUMENT IS THE PROPERTY OF BHARAT HEAVY ELECTRICALS LIMITED IT MUST NOT BE USED DIRECTLY OR INDIRECTLY IN ANY WAY DETRIMENTAL TO THE INTEREST OF THE COMPANY.

TENDER/1LA4354-4 FOOT\_CUM\_FLANGE REF. DRG. NO.

SIGN & DATE

INVENTORY NO.

DRG. NO. 1LA4354-4



FOR TENDER & DIMENSIONAL REFERENCE ONLY

**MOTOR FITMENTS**

- (I) TERMINAL BOXES FOR :
  - 1 - STATOR (PSTB TYPE)
  - 2 - ETD'S+BTD'S
  - 3 - SPACE HEATERS
  - 4 - NEUTRAL POINT
- (II) TEMPERATURE SENSORS
  - (A) WDG. ETD'S 12 Nos. 3-WIRES PT.TYPE, 100 Ω AT 0°C (SIMPLEX)
  - (B) BEARING RTD'S 2 Nos. 3-WIRES PT.TYPE, 100 Ω AT 0°C (DUPLEX)
  - (C) 2 -NOS. DIAL TYPE BTD. (1 EACH AT DE & NDE BRGS)
- (III) OTHERS
  - SPACE HEATERS 2 NOS. TOTAL POWER 315 WATTS ( 630 WATTS EACH) 240 VOLTS, 50 Hz
- (IV) FANS : BI-DIRECTIONAL
- (V) HOLDING DOWN BOLTS:- 8xM24x100 LONG
- (VI) CABLE DETAILS:-
  - STATOR:-1Rx3Cx240 SQ.MM MAX., XLPE CABLE
  - SPACE HEATER:- 1Rx3Cx2.5 SQ.MM, A2XFY.

**TECHNICAL DATA**

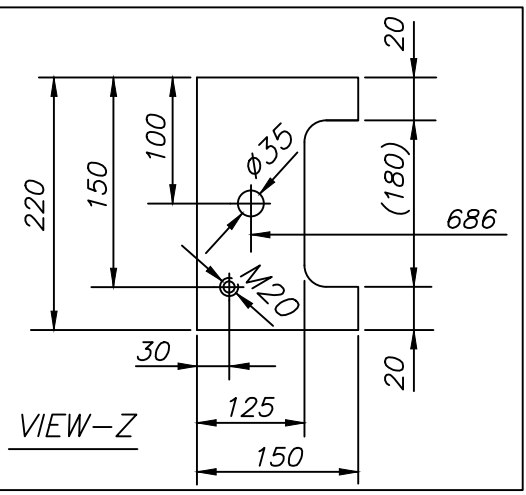
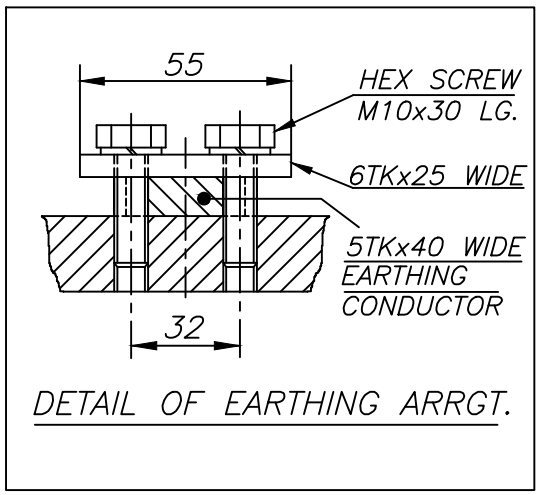
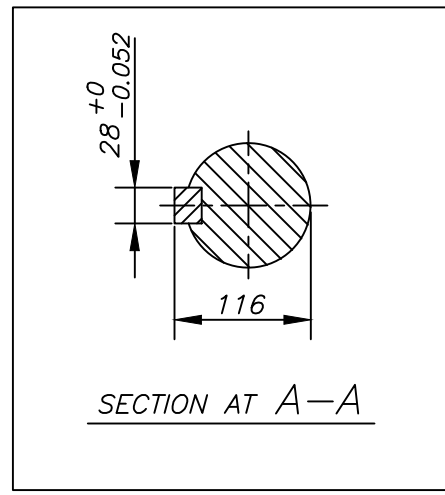
RATING	410 kW
SPEED (SYN)	1500 rpm
VOLTAGE 3 PHASE 50 Hz	3300 VOLTS
FULL LOAD AMP STATOR	- AMP
APPROX. WEIGHT OF MOTOR	3400 kg
APPROX. WEIGHT OF ROTOR	950 kg
GD <sup>2</sup> OF ROTOR	32.4 kgm <sup>2</sup>
MAX. FOUNDATION LOADING (ALTERNATING) PER MOTOR LONGITUDINAL SIDE	15 kN UPWARDS 28 kN DNWARDS
BEARINGS	DE 6224C3
	NDE 6220C3

LUBRICATION: GREASE SERVOGEM-3 OF IOC OR EQUIVALENT

DIRECTION OF ROTATION VIEWED FROM DRIVE END BI-DIRECTIONAL (CLOCKWISE)

PAINT SHADE SPECIFICATION SHADE NO. 631 OF IS-5 EPOXY PAINT-LIGHT GREY.

TYPE OF ENCLOSURE TEFC



ADDITIONAL INFORMATION ENQUIRY-1605

TYPE OF PRODUCT : SQ. CAGE INDUCTION MOTOR DRIVE : COMPRESSOR  
 NAME OF CUSTOMER : M/S NTPC  
 NAME OF PROJECT : -

DISTRIBUTION OF PRINTS AME-1 , TEX(IMM)-1 IMM-3 , TFX-1

	BHARAT HEAVY ELECTRICALS LTD.		DRN	NAME P.K.DIVYA	SIGN.	DATE 31.08.13	NO. OF VAR.
	BHOPAL		CHD.	A.K.M		31.08.13	
			APPD	M.K.M.		31.08.13	

REV.	DATE	ALTERED.	REV.	DATE	ALTERED.	REV.	DATE	ALTERED.
		CHECKED.			CHECKED.			CHECKED.
		APPROVED.			APPROVED.			APPROVED.

DEPT. AME	GRADE OF UN. TOL.	SCALE NTS	WEIGHT(Kg.)
CODE 404	DIM. C/M/F		

REF. TO ASSY. DRG. ITEM NO. NO. OF ITEMS

DRAWING NO. 1LA4354-4

TITLE OUTLINE GENERAL ARRGT. 1LA4354-4, TEFC, IP55, B35

SHEET NO. 01 NO. OF SHEETS 01