



An ISO 9001
Company

Bharat Heavy Electricals Limited

(High Pressure Boiler Plant)

Tiruchirappalli – 620014, TAMIL NADU, INDIA

MATERIALS MANAGEMENT / PURCHASE / TUBES

ENQUIRY – CORRIGENDUM .1	Phone: +91 431 2577447 /2577058 Fax : +91 431 252 0719 Email : agk@bheltry.co.in
--------------------------	--

NIT NO - 12579	Reference Number: Enquiry 1501200040	Enquiry Date: 20.08.2012	Due date for submission of quotation: 25.09.2012
----------------	---	-----------------------------	---

You are requested to quote the Enquiry number date and due date in all your correspondences. This is only a request for quotation and not an order.

Please note that under any circumstance both **delayed offer** and **late offers** will not be considered. Hence vendors are requested to ensure that the offer is reaching physically our office before 14.00 hrs on the date tender opening.

Sub: DRAWING NO. 3-06-651-03853 for the tender 1501200040

Confirmation for the subject drawing is required for consideration of offer. Please ensure submission of offers with reference to this drawing.

BHEL commercial terms & conditions with Price Bid formats and all annexure can be downloaded from BHEL web site <http://www.bhel.com> or from the Government tender website <http://tenders.gov.in> (public sector units) Bharath Heavy Electricals Limited) under enquiry reference "1501200040"

Tenders should reach us before 14:00 hours on the due date
Technical bid will be opened at 14:30 hours on the due date
Tenders would be opened in presence of the tenderers who have submitted their offers and who may like to be present.

Yours faithfully,
For Bharath Heavy Electricals Limited


SM/ PURCHASE/TUBES

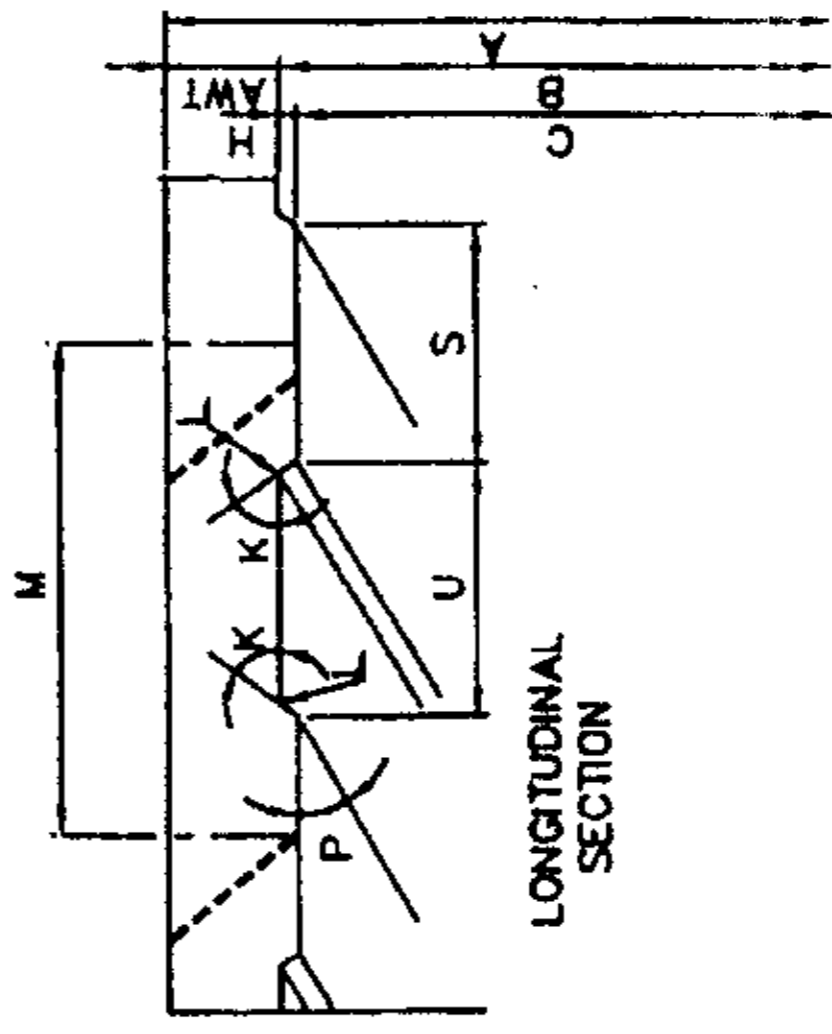
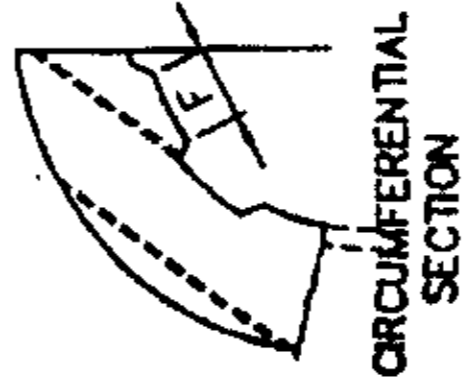
N. GANAPATHY SUBRAMANIAN
Engineer
MM / MFG. / Purchase / Tubes
BHEL, Tiruchirappalli - 620 014.

FOR TOLERANCES OF INTOLERANCED DIMENSIONS DURING MANUFACTURE REFER PLANT STD:HO TP 023 0289

DIMENSIONAL SPECIFICATION FOR MULTI-RIP RIFLED TUBING

MATERIAL SPECIFICATION : SA 210 GrC

↓ PARAMETERS	TUBE SIZE →	TUBE #51x5.6	TUBE #51x6.0	TUBE #51x7.1	TUBE #63.5x7.1	TUBE #63.5x11	TUBE #63.5x12
A	TUBE OUTSIDE DIAMETER	51.00 ±0.25	51.00 ±0.25	51.00 ±0.25	63.50 ±0.30	63.50 ±0.30	63.50 ±0.30
B	MAJOR INSIDE DIAMETER	38.57 ±0.25	37.68 ±0.25	35.24 ±0.25	47.74 ±0.30	39.08 ±0.30	36.86 ±0.30
C	MINIMUM INSIDE DIAMETER	35.57	34.71	32.30	44.53	36.03	33.85
D	MINIMUM WALL THICKNESS	5.6	6.0	7.1	7.1	11	12
E	NUMBER OF RIBS	8	8	8	8	8	8
F	RIP WIDTH AT TOP (NOMINAL) (CIRCUMFERENTIAL)	4.78	4.78	4.78	4.78	4.78	4.78
H	RIP HEIGHT	1.07 ±0.30	1.06 ±0.30	1.04 ±0.30	1.15 ±0.30	1.07 ±0.30	1.05 ±0.30
K	RIP SIDE ANGLE	55° ±15°	55° ±15°	55° ±15°	55° ±15°	55° ±15°	55° ±15°
L	RIP RADIUS	0.13-1.27	0.13-1.27	0.13-1.27	0.13-1.27	0.13-1.27	0.13-1.27
M	RIP PITCH	26.23 ±3.18	25.62 ±3.18	23.97 ±3.18	32.46 ±3.18	26.57 ±3.18	25.06 ±3.18
N	LEAD LENGTH (360°)	209.8 ±25.4	205.0 ±25.4	191.8 ±25.4	259.7 ±25.4	212.6 ±25.4	200.5 ±25.4
P	LEAD ANGLE (NOMINAL)	30°	30°	30°	30°	30°	30°
S	RIP WIDTH AT TOP (LONGITUDINAL)	8.28 ±1.27	8.28 ±1.27	8.28 ±1.27	8.28 ±1.27	8.28 ±1.27	8.28 ±1.27
U	GROOVE WIDTH AT TOP (LONGITUDINAL)	17.95 ±1.90	17.34 ±1.90	15.69 ±1.90	24.18 ±1.90	18.29 ±1.90	16.78 ±1.90



REV	DATE	ALTERED
01		CHD & APPD:
		EDM

ID

VAR NO	DESCRIPTION	DRAWING NUMBER	MATERIAL CODE	UNIT WEIGHT
1				
2				
3				
4				
5				
6				
7				
8				
9				
10				

TYPE OF PRODUCT OR NAME OF CUSTOMER/PROJECT

Bharat Heavy Electricals Ltd
UNIT: HIGH PRESSURE BOILER PLANT
TRUCHIRAPALLI - 620014

305-005

PROJECTION SCALE: NTS

WEIGHT (KG): -

DATE: 12.2.99

BY: M.SOMU

CHECKED: P.S.GURU

APPROVED: P.S.GURU

REF TO ASBY / OLD DWS

DRAWING NO: 3-06-651-03853

REV

39880-199-90-8
SON CHAMBER