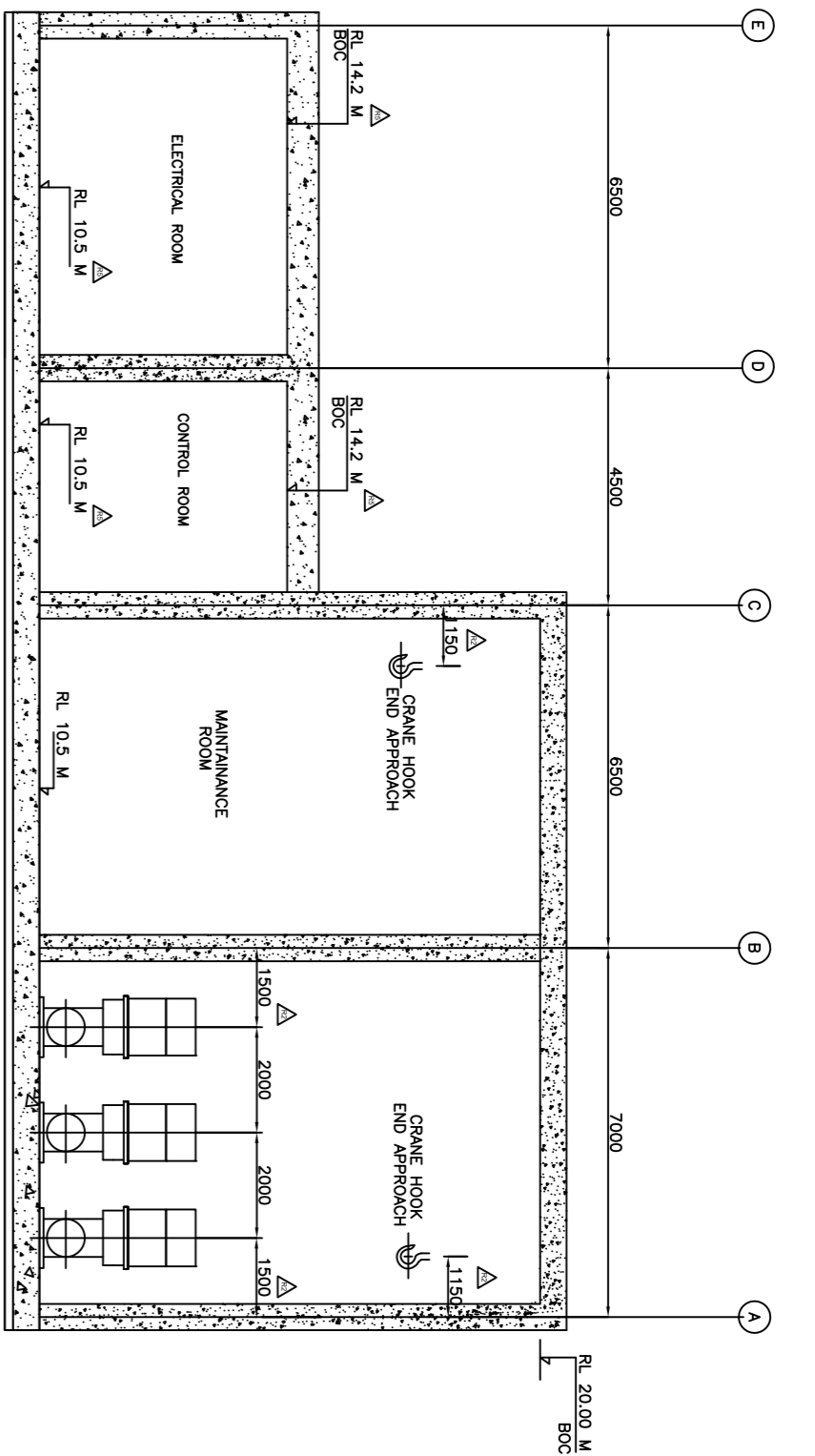


C.W MAKE-UP PUMPHOUSE SECTIONAL VIEW - AA
SCALE 1:125

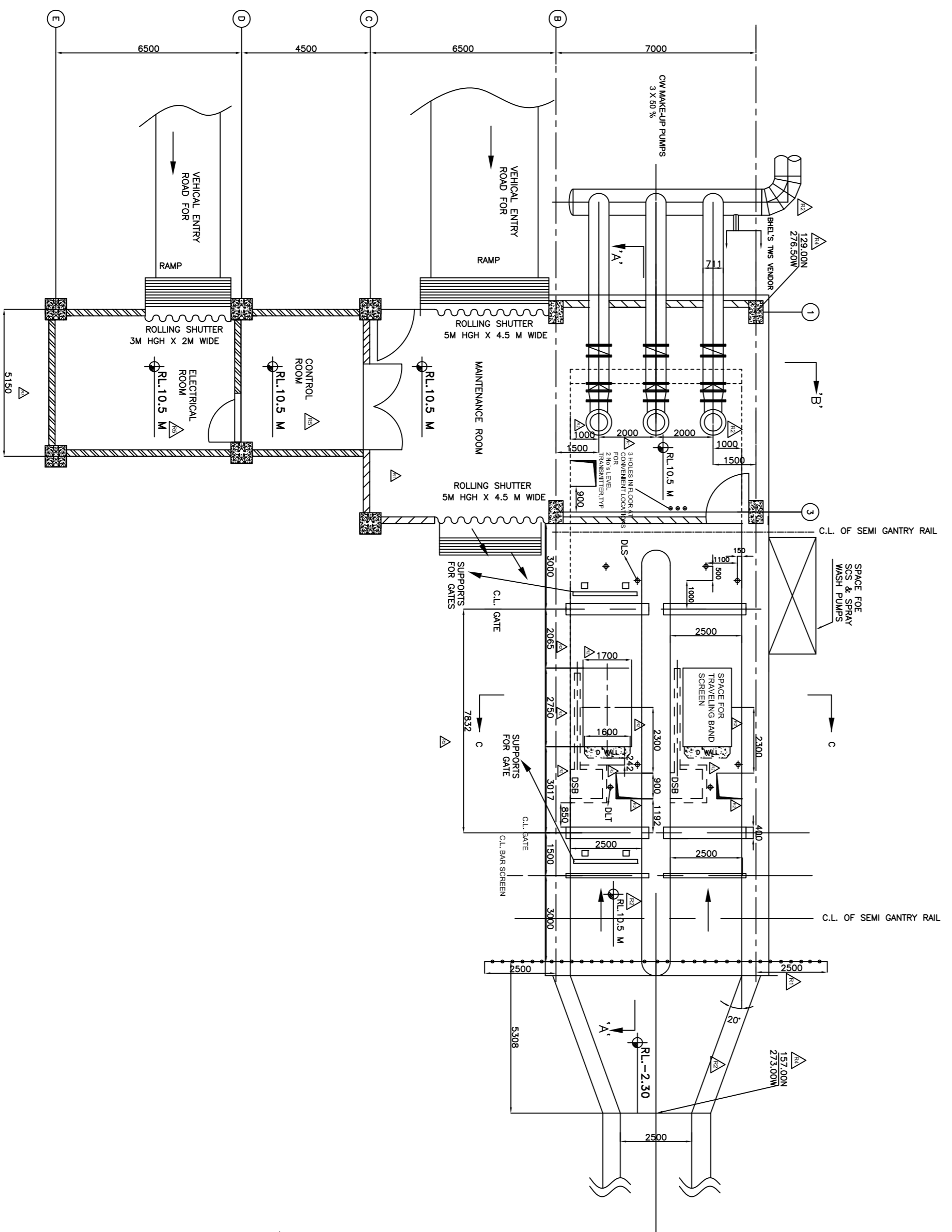
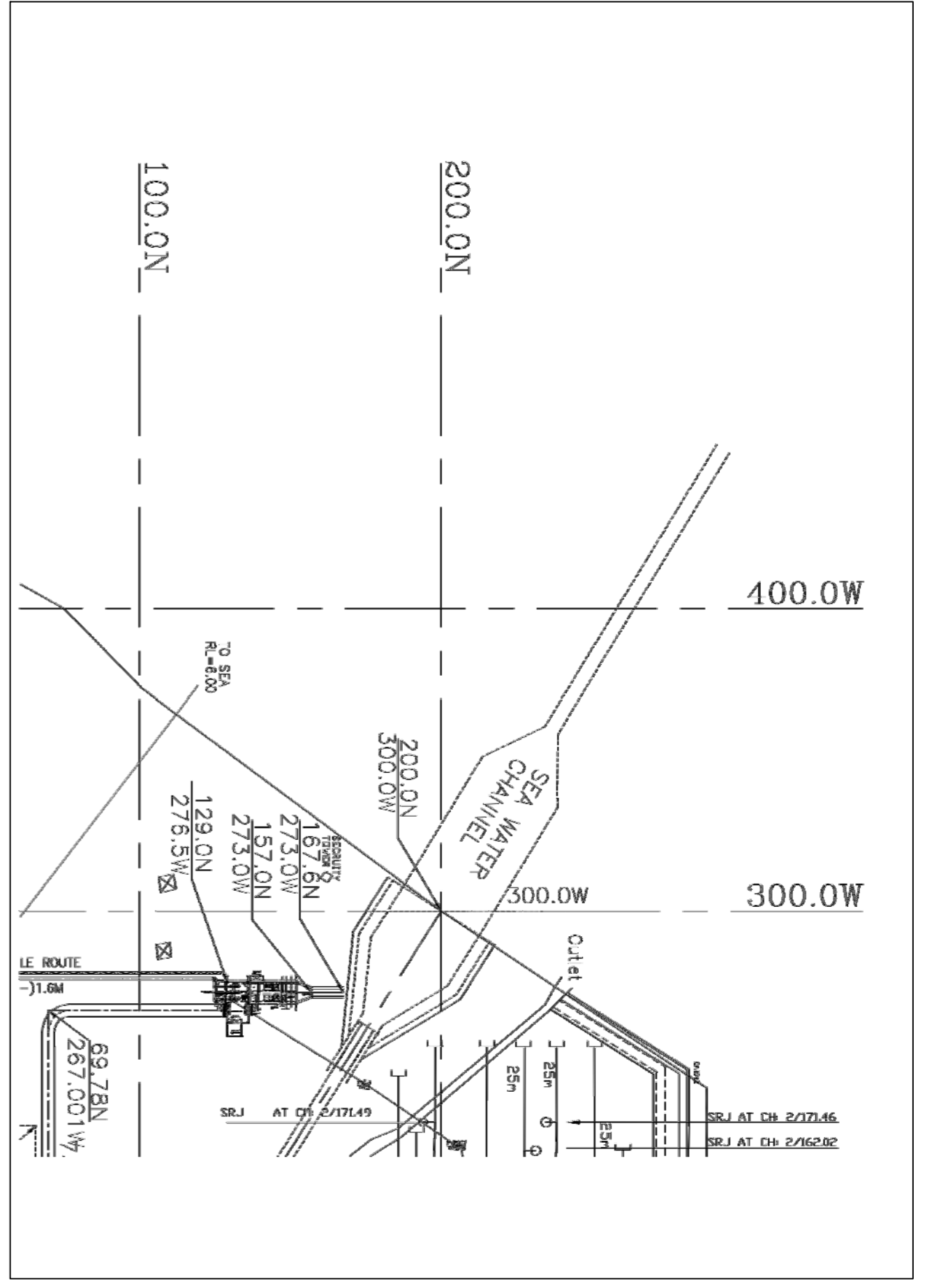


CW MAKE-UP PUMPHOUSE SECTIONAL VIEW - BB.
SCALE 1:125

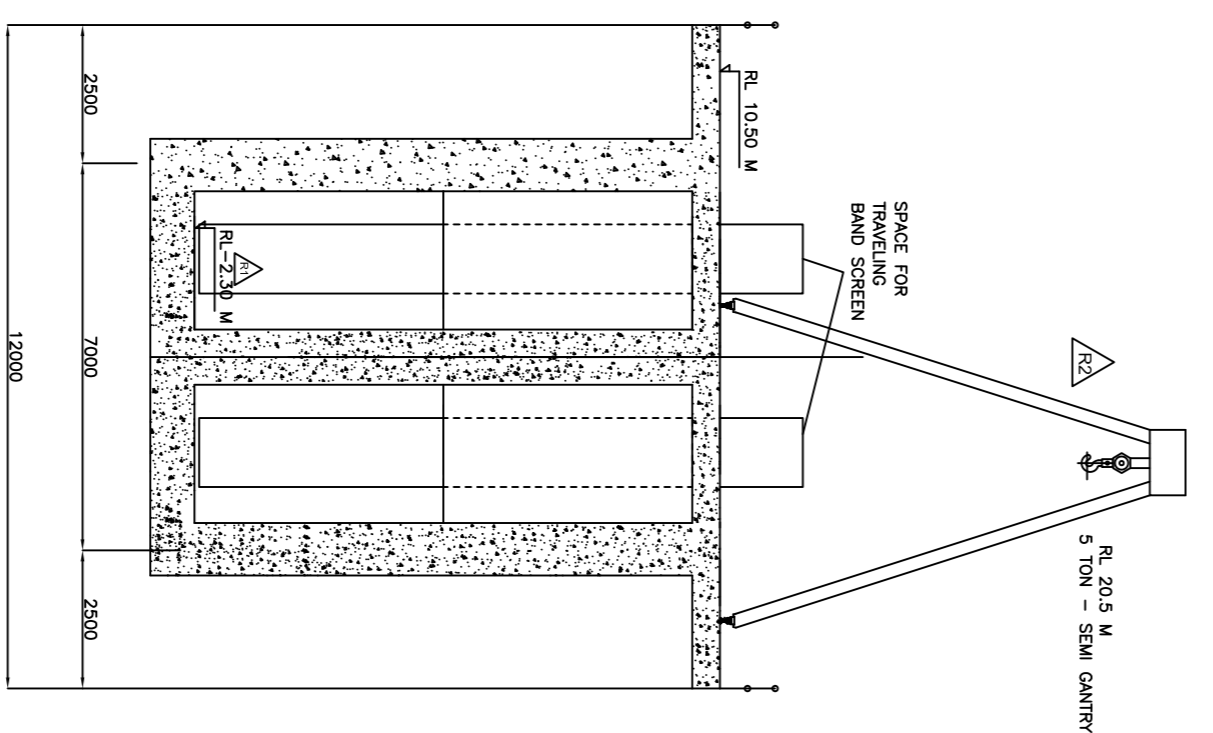
- LEGEND:
- FLL FINISHED FLOOR LEVEL
 - FGL FINISHED GROUND LEVEL
 - CL CENTRE LINE
 - BOC BOTTOM OF CONCRETE
 - COH CENTRE LINE OF HOOK

NOTES:

1. ALL DIMENSIONS ARE IN MM AND ELEVATIONS ARE IN M.
2. AS PER CUSTOMER/ENGINEER'S COMMENTS RECEIVED VIDE VDI-138, INVERT LEVEL FOR SUMP AND MINIMUM WATER LEVELS ARE REVISED.
3. SUMP FLOOR TO HAVE SUITABLE SLOPE TOWARDS DEWATERING PIT.
4. TRAVELLING BAND SCREENS SPACE REQUIREMENT AND REQUIRED CIVIL WORKS FOR MOUNTING OF TBS SHALL BE FINALISED AFTER TBS DOCUMENTS APPROVAL.
5. ALL SINGLE DOOR SHALL BE 2.1 HIGH X 1 WIDE AND DOUBLE DOOR SHALL BE 2.1 HIGH X 1.5 M WIDE.
6. TOTAL TWO NOS. GATES SHALL BE PROVIDED FOR THE SYSTEM.
7. REFERENCE DRAWING NUMBERS
8. RL. +10.5 M CORRESPONDS TO EL. 0.0M OF TG BUILDING FINISHED FLOOR ELEVATION.



C.W MAKE-UP PUMPHOUSE PLAN



C.W MAKE-UP PUMPHOUSE SECTIONAL VIEW - CC.
SCALE 1:125

LEVEL	DESCRIPTION	REMARK
RL(+10.5M)	POWER HOUSE (TG HALL) FINISHED FLOOR LEVEL	
RL(+10M)	PLANT FINISHED GRADED LEVEL (FGL)	
RL(+6.1M)	HIGHEST TIDE LEVEL AS PER TIDE TABLE 2009 AS PER GSECL LETTER NO CE/STPS/UNIT 3 & 4/CIVIL/7357 DATED 14-12-09	CONSIDERED FOR MAX. WL
RL(+5.9M)	HIGHEST TIDE LEVEL AS PER TIDE TABLE 2008 AS PER GSECL LETTER NO CE/STPS/UNIT 3 & 4/CIVIL/7357 DATED 14-12-09	
RL(+0.0M)	CHART DATUM AS PER GSECL LETTER NO CE/STPS/UNIT 3 & 4/CIVIL/7357 DATED 14-12-2009	
RL(-0.1M)	LOWEST TIDE LEVEL AS PER TIDE TABLE 2009 AS PER GSECL LETTER NO CE/STPS/UNIT 3 & 4/CIVIL/7357 DATED 14-12-2009	
RL(-0.3M)	LOWEST TIDE LEVEL AS PER TIDE TABLE 2008 AS PER GSECL LETTERS NO CE/STPS/UNIT 3 & 4/CIVIL/7357 DATED 14-12-2009	
RL(-0.4M)	MINIMUM WATER LEVEL AS PER GSECL/ENGINEER'S COMMENTS ON R-0 DRAWING VIDE TRANSMITTAL NO TCE/5064A-ME-BHEL (FEM)/VDI-138	CONSIDERED FOR MIN. WL
RL(-2.3M)	INVERT LEVEL OF CW WU PUMP HOUSE CHANNEL	
RL(-3.3M)	INVERT LEVEL OF CW WU PUMP SUMP	

11. ELECTRICAL REFERENCE DRG NO -PE-DG-281-100-E029

9. DETAILS OF BAR SCREENS.
a) QUANTITY = 2 NUMBERS TOTAL
b) MATERIAL:-
Bar Screens- SS316L
Guideframe- SS316L
WASHING- 100MM X100MM
10. DETAILS OF STOP LOG GATES.
a) QUANTITY = 2 NUMBERS TOTAL
b) MATERIAL:-
Stop Log Gate - Carbon Steel (Epoxy Coated)
Guide - SS316L

REV	DATE	BY	CHKD	APPD	REV	DATE	BY	CHKD	APPD
01	5.1.2012	AKJ	AKJ	AKJ	04	30.11.11	AKJ	AKJ	AKJ
02					03	11.05.11	AKJ	AKJ	AKJ
03					02	22.02.11	AKJ	AKJ	AKJ
04					01	09.11.09	AKJ	AKJ	AKJ

NO.	DATE	BY	CHKD	APPD
01	09.11.09	AKJ	AKJ	AKJ

JOB NO.	281
STATUS	CONTRACT
DISTRIBUTION	
NO.	
DATE	
BY	
CHKD	
APPD	

GUJARAT STATE ELECTRICITY CORP. LTD.
SIKKA TPS, EXTENSION UNITS 3 & 4
2 X 250 MW

BHARATI HEAVY ELECTRICALS LTD.
POWER SECTOR
PROJECTS ENGINEERING MANAGEMENT
NEW DELHI

DEPT. HEAVY ELECTRICALS
CODE DESN. AJ
CHD. AJ
APPD. PK
DATE 11/07/09

TITLE: GENERAL ARRANGEMENT OF CW MAKE-UP PUMP HOUSE
DRAWING NO. PE-DG-281-172-N005
SHEET 01 OF 01 REV. 05