

GENERAL ARRANGEMENT OF BOILER SECTIONAL SIDE ELEVATION

- REFERENCE DRAWING NOS.:-**
- G.A OF BOILER SECTIONAL PLAN - 0-00-022-74225
 - LOCATION OF FURNACE OPENINGS & BUCKSTAYS. - 0-00-020-74227
 - T.P DETAILS OF FW, MS, HRH & CRH PIPING. - 0-00-020-74228
 - LAYOUT OF COLD AIR DUCTING (PLAN & ELEVATION) - 0-00-020-74229
 - LAYOUT OF HOT AIR DUCTING - (PLAN & ELEVATION) - 0-00-020-74230
 - LAYOUT OF FLUE GAS DUCTING. - 0-00-020-74231
 - LAYOUT OF ID SYSTEM -ELEVATION. - 0-00-020-74232
 - LAYOUT OF ID SYSTEM - PLAN - 0-00-020-74233
 - FLOOR PLAN AT EL.4300 & 7000 (MBL-1) - 0-00-021-74244
 - FLOOR PLANS AT EL. 12000,12900 TO FLOOR PLAN AT EL. 59000 - 1-00-021-70969 TO 1-00-021-70984
 - BOILER EQUIPMENT DESIGNATION. - 3-00-020-70106

LEGEND

SYMBOL	ABBREVIATION	DESCRIPTION
	TP	TERMINAL POINT UNDER BOILER SCOPE OF SUPPLY
	AD	ACCESS DOOR
	OBD	OBSERVATION DOOR
	F	FUTURE OBSERVATION DOOR
	LRSB	LONG RETRACTABLE SOOT BLOWER
	F	FUTURE LONG RETRACTABLE SOOT BLOWER
	IN	INSTRUMENT INSERT
	BS	BUCKSTAY
		FURNACE GUIDE
	FG	FURNACE GUIDE ON FRONT/REAR WALLS
	WB	WALL BLOWER
	F	FUTURE WALL BLOWER
	MBL	MAIN BRACE LEVEL
	WP	WORK POINT
		TEMPERATURE PROBE
	L	LIFT LANDING

BOILER PARAMETERS

01. STEAM FLOW AT SUPER HEATER OUTLET	: 865T/HR
02. STEAM PRESSURE AT SUPERHEATER OUTLET	: 155 KG/CM ² (G)
03. STEAM TEMPERATURE AT SUPERHEATER OUTLET	: 540° C
04. STEAM TEMPERATURE AT REHEATER OUTLET	: 540° C

DESCRIPTION OF THE UNIT

TWO NUMBER OF 250 MW BOILERS, NATURAL CIRCULATION, TWO PASS, SINGLE DRUM, DIRECT, PULVERISED COAL FIRED, BALANCED DRAFT FURNACE, SINGLE REHEAT, RADIANT DRY BOTTOM, SUITABLE FOR OUTDOOR INSTALLATION & SIX NUMBERS OF BOWL MILLS ARRANGED AT THE REAR OF THE BOILER.

- NOTES:-**
- ALL DUCT SIZES ARE INSIDE DIMENSIONS ONLY UNLESS OTHERWISE SPECIFIED.
 - THE STIFFENER SIZE FOR THE FLUE GAS DUCTING IN MILL BAY AREA IS RESTRICTED TO 150 MAX.

SPECIAL NOTES

ALL ELEVATIONS ARE REFERRED TO POWER HOUSE GROUND FLOOR ELEVATION (+) 0.0 m WHICH CORRESPONDS TO RL(+)-10.5m BOILER FFL (-) 0.200 m WHICH CORRESPONDS TO RL(+)-10.3 m

REV.	DATE	ALTD :	P.V.SRIHARI BABU
02.	02.09.08	CHD&APPD:	N.MURUGAN
1			DRAWING UPDATED TO SHOW COLUMNS DESIGNATIONS. AS PER PEM REQUIREMENT
2			DRAWING UPDATED AS PER TCE COMMENTS
3			DRAWING UPDATED AS PER INTERNAL REQUIREMENT

CUSTOMER NO. : 0395 & 0396

GUJARAT STATE ELECTRICITY CORPORATION LIMITED
2 X 250 MW SHIKHA THERMAL POWER PROJECT EXTENSION UNITS 3&4 DIST .JAMNAGAR

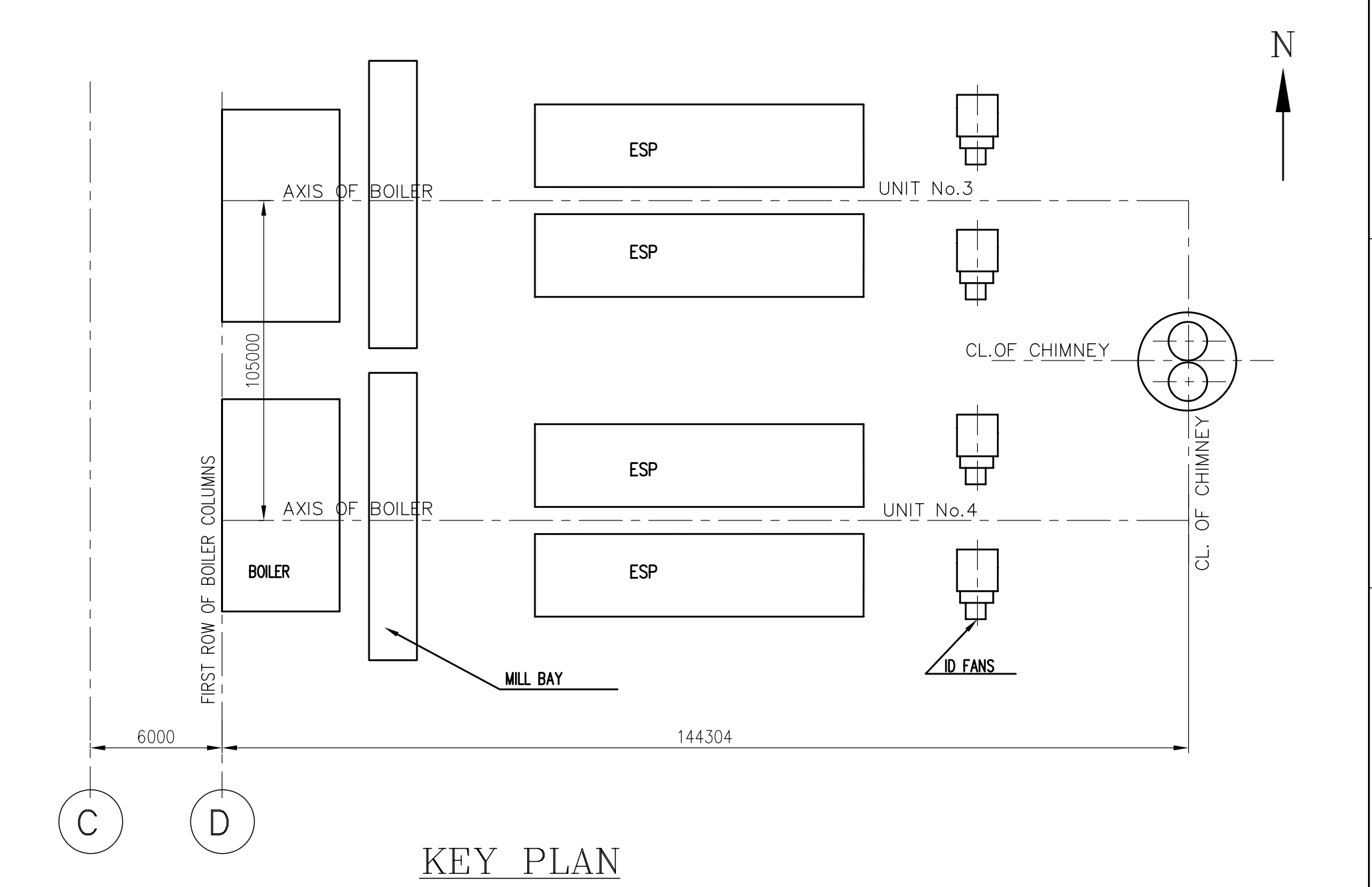
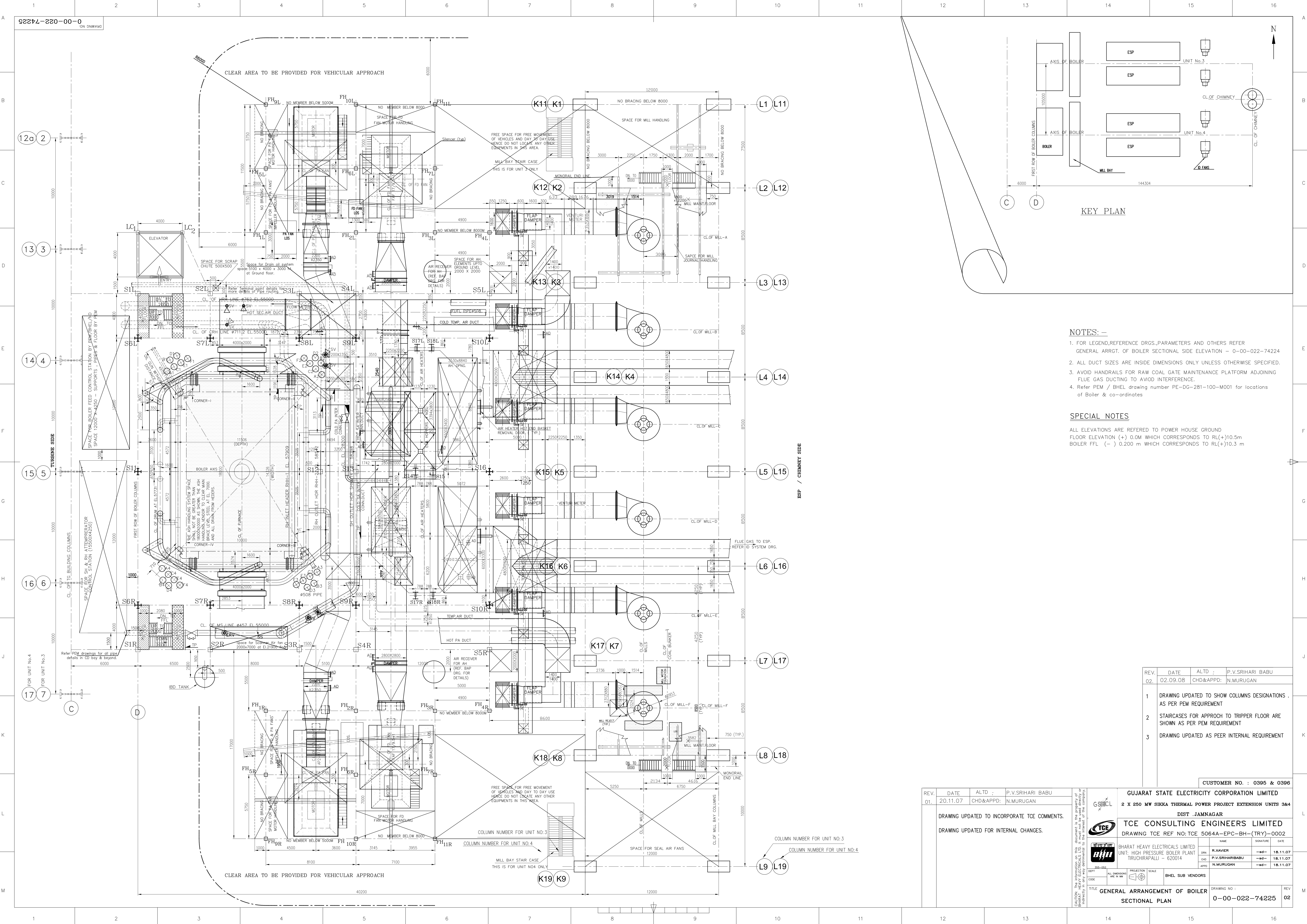
TCE CONSULTING ENGINEERS LIMITED
DRAWING TCE REFNO: TCE 5064A-EPC-BH-(Unit)-0001

BHARAT HEAVY ELECTRICALS LIMITED
UNIT: HIGH PRESSURE BOILER PLANT TIRUCHIRAPPALLI - 620014

DRN	NAME	SIGNATURE	DATE
PRPD	R.XAMIER	-sd-	15.11.07
CHD	P.V.SRIHARI BABU	-sd-	15.11.07
APPD	N.MURUGAN	-sd-	15.11.07

DEPT: ALL DIMENSIONS ARE IN MM PROJECTION: SCALE: 1:100 BHEL SUB VENDORS

TITLE: GENERAL ARRANGEMENT OF BOILER SECTIONAL ELEVATION DRAWING NO: 0-00-022-74224 REV: 02



KEY PLAN

- NOTES: -**
- FOR LEGEND, REFERENCE DRGS., PARAMETERS AND OTHERS REFER GENERAL ARRGT. OF BOILER SECTIONAL SIDE ELEVATION - 0-00-022-74224
 - ALL DUCT SIZES ARE INSIDE DIMENSIONS ONLY UNLESS OTHERWISE SPECIFIED.
 - AVOID HANDRAILS FOR RAW COAL GATE MAINTENANCE PLATFORM ADJOINING FLUE GAS DUCTING TO AVOID INTERFERENCE.
 - Refer PEM / BHEL drawing number PE-DG-281-100-M001 for locations of Boiler & co-ordinates

SPECIAL NOTES

ALL ELEVATIONS ARE REFERRED TO POWER HOUSE GROUND FLOOR ELEVATION (+) 0.0M WHICH CORRESPONDS TO RL(+10.5m)
 BOILER FFL (-) 0.200 m WHICH CORRESPONDS TO RL(+10.3 m)

REV.	DATE	ALTD :	P.V.SRIHARI BABU
02.	02.09.08	CHD&APPD:	N.MURUGAN
1			DRAWING UPDATED TO SHOW COLUMNS DESIGNATIONS . AS PER PEM REQUIREMENT
2			STAIRCASES FOR APPROCH TO TRIPPER FLOOR ARE SHOWN AS PER PEM REQUIREMENT
3			DRAWING UPDATED AS PEER INTERNAL REQUIREMENT

REV.	DATE	ALTD :	P.V.SRIHARI BABU
01.	20.11.07	CHD&APPD:	N.MURUGAN
DRAWING UPDATED TO INCORPORATE TCE COMMENTS.			
DRAWING UPDATED FOR INTERNAL CHANGES.			

GUJARAT STATE ELECTRICITY CORPORATION LIMITED
2 X 250 MW SIXKA THERMAL POWER PROJECT EXTENSION UNITS 3&4
 DIST .JAMNAGAR

TCE CONSULTING ENGINEERS LIMITED
 DRAWING TCE REF NO:TCE 5064A-EPC-BH-(TRY)-0002

BHARAT HEAVY ELECTRICALS LIMITED
 UNIT: HIGH PRESSURE BOILER PLANT
 TIRUCHIRAPALLI - 620014

BHEL SUB VENDORS

CUSTOMER NO. : 0395 & 0396

TITLE: GENERAL ARRANGEMENT OF BOILER SECTIONAL PLAN

DRAWING NO : 0-00-022-74225

REV 02