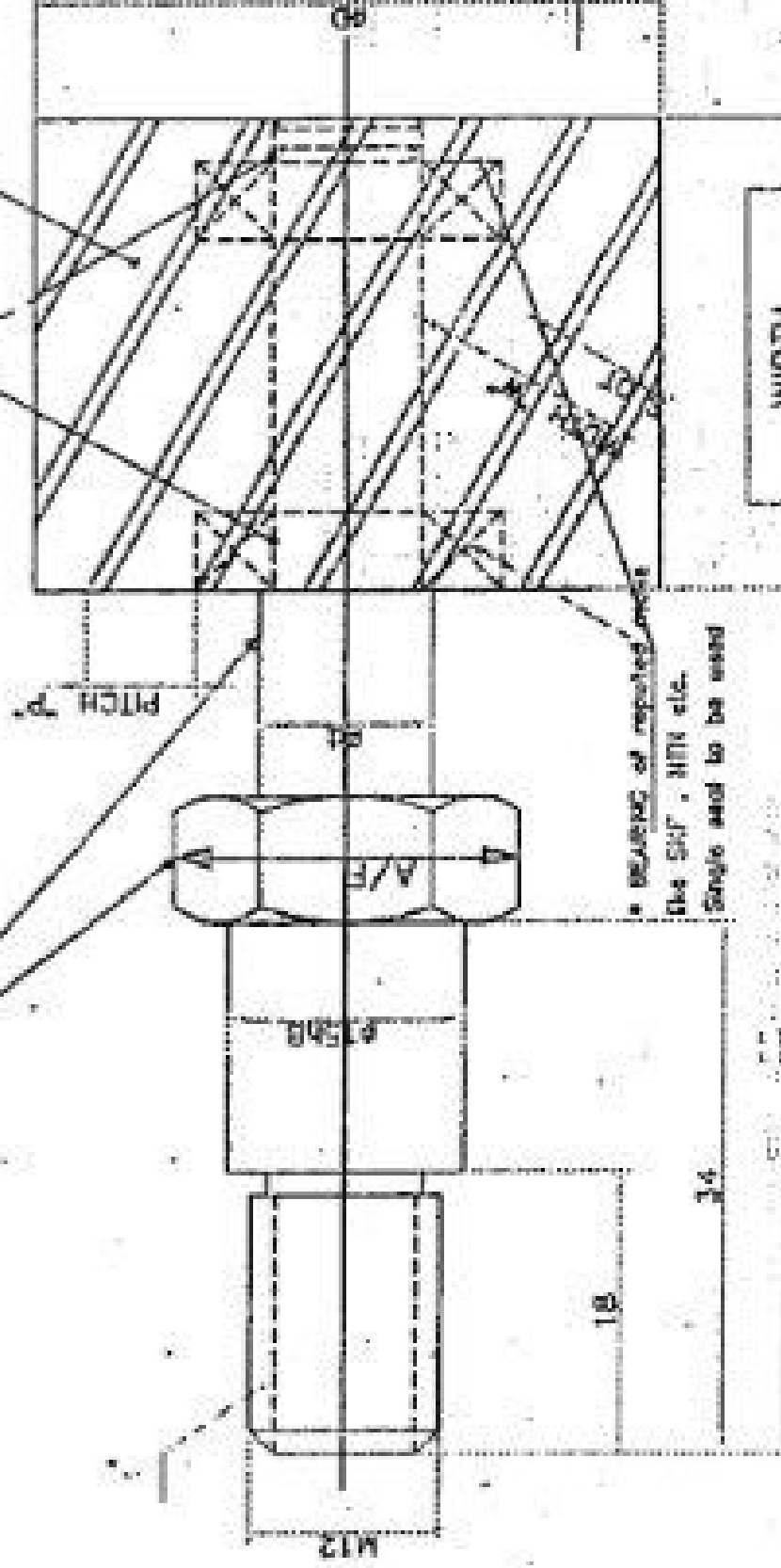


**WIPAC**

ACROSS FLATE (A/F) SIZE, DIAMETER  
'd' & BEARING SIZE GO

BEARING MOUNTED ON RESISTANT RUBBER/SYNTHETIC  
CONTACT AREA WITH SPIRAL GROOVE ALL THROUGHOUT  
PERIPHERY, HARDNESS OF RUBBER 55 TO 60 SHORE

BEARING DIAMETER (BD)



WIDTH	
VAR.-I	30mm.
VAR.-II	42mm.

13Ni3Cr80/En36

AA10503, (BS: 970)

HARDEN TO HRC 25-28 AS PER

P.S. NO. 0912-008.

ALL DIMENSIONS ARE IN mm.

T2, T4 - ARE APPLICABLE BLADES FOR CORRESPONDING DIA

DRN.	NAME	SIG.	DATE
CHD.	GU	[Signature]	21.04.74
APPO.	AM	[Signature]	21.04.74
	HPC	[Signature]	21.04.74

TITLE-

CONTACT ROLLS FOR ABRASIVE

BELT POLISHING

S/N (mm)	Bored dia (mm)	P	W	FOR DRILL DIA		
				T2	T4	TX
1.	25	SKF-607-22 8-12	2-4	2	20	30
2	30	SKF-607-22 8-12	2-4	2	8-25	
3	35	SKF-608-22 8-12	2-4	2	25	25
4	40	SKF-608-22 8-12	2-4	3	28	28
5	45	SKF-608-22 8-12	2-4	3	20	32
6	50	SKF-608-22 8-12	2-4	3	36	36
7	55	SKF-608-22 8-12	2-4	3	40	40
8	60	SKF-6003-22 8-12	2-4	3	25	
9	65	SKF-6003-22 8-12	2-4	3	45	45
10	70	SKF-6003-22 8-12	2-4	3		50
11	75	SKF-6003-22 8-12	3-5	3	32	50
12	80	SKF-6003-22 12-16	3-5	3	56	56
13	85	SKF-6003-22 12-16	3-5	3		
14	90	SKF-6003-22 12-16	3-5	3		64
15	95	SKF-6003-22 12-16	3-5	3	40	64
16	100	SKF-6003-22 12-16	3-5	4		
17	105	SKF-6003-22 12-16	4-7	4		
18	110	SKF-6003-22 14-18	4-7	4		
19	115	SKF-6003-22 14-18	4-7	4		
20	120	SKF-6004-22 14-18	4-7	4	50	
21	125	SKF-6004-22 14-18	4-7	4		

DEEP GROOVE BALL BEARING WITH 2 SIDE PLATES.  
Bearing should be SKF / NTN or Equivalent of Reputed make.

SKETCH NO. STB-90/5 Rev-01

**WIPAC**