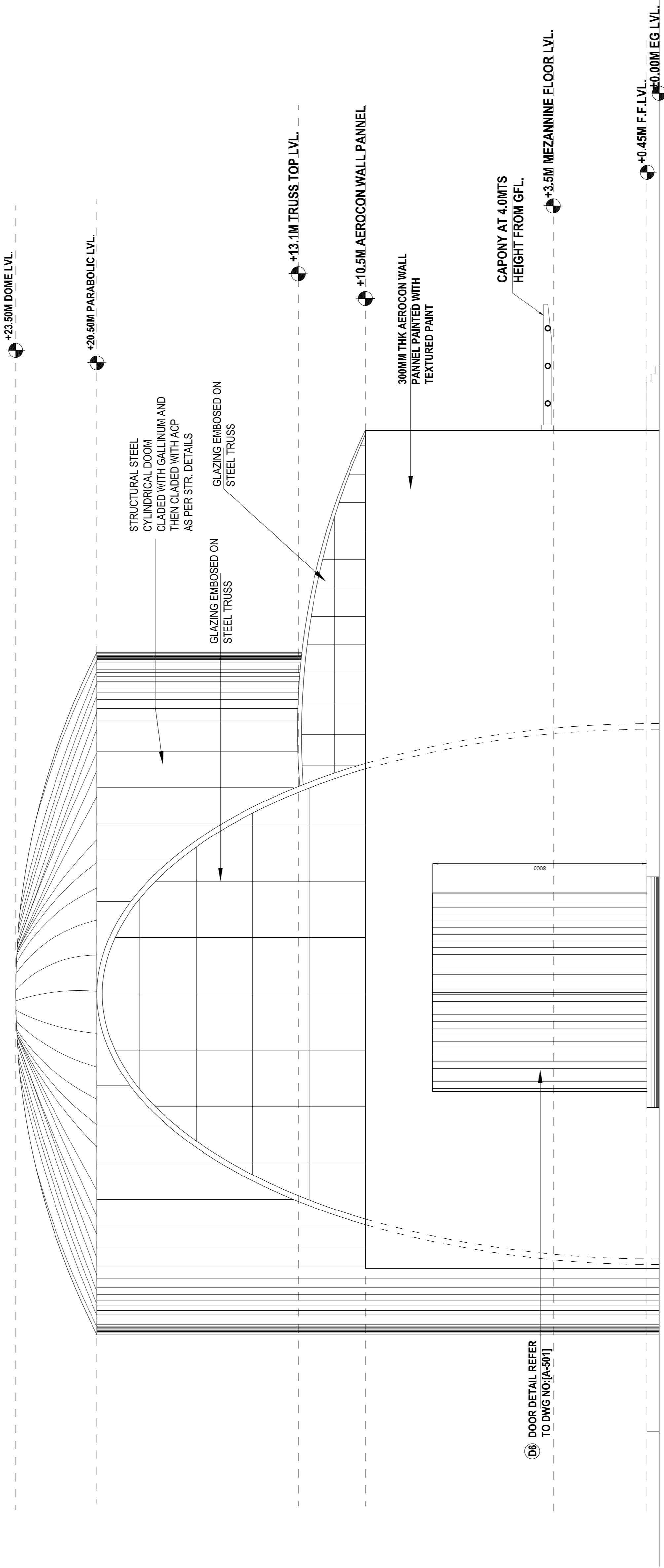


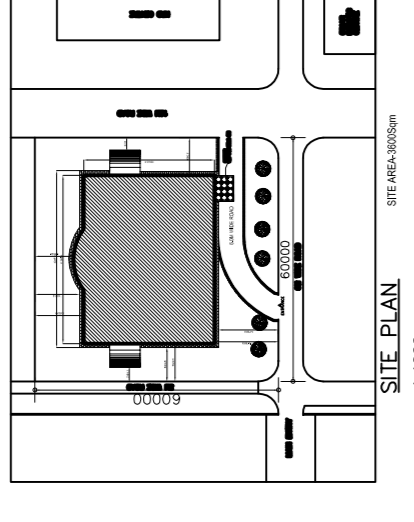
TDR DRG No. 03



EAST SIDE ELEVATION

NOTES

1. ALL DIMENSIONS IN MM ONLY
2. DO NOT SCALE DRAWING.
3. FOLLOW WRITTEN DIMENSIONS.
4. ALL DIMENSIONS ARE UNFINISHED DIMENSIONS.



SCHEDULE OF OPENINGS

D1	GLAZED DOUBLE SWING DOOR WITH PIVOTS AND FLOOR SPRING AND A HANDLE 1200 X 2100MM
D2	12MM THK GLASS DOOR WITH FISHER CHANNEL FRAME WITH FLOOR SPRING 110 MAGNET 1200MM X 2100MM
D3	GLAZED SINGLE SWING DOOR 1200MM X 2100MM
D4	FIRE PROOF DOOR 1200MM X 2100MM
D5	FIRE PROOF DOOR 3000MM X 2100MM
D6	SLIDING DOOR 7500MM X 8000MM
D7	SKIN DOOR FOR TOILETS 900MM X 2100MM
D8	VENNER DOOR FOR A.H.U. ROOM 900MM X 2100MM

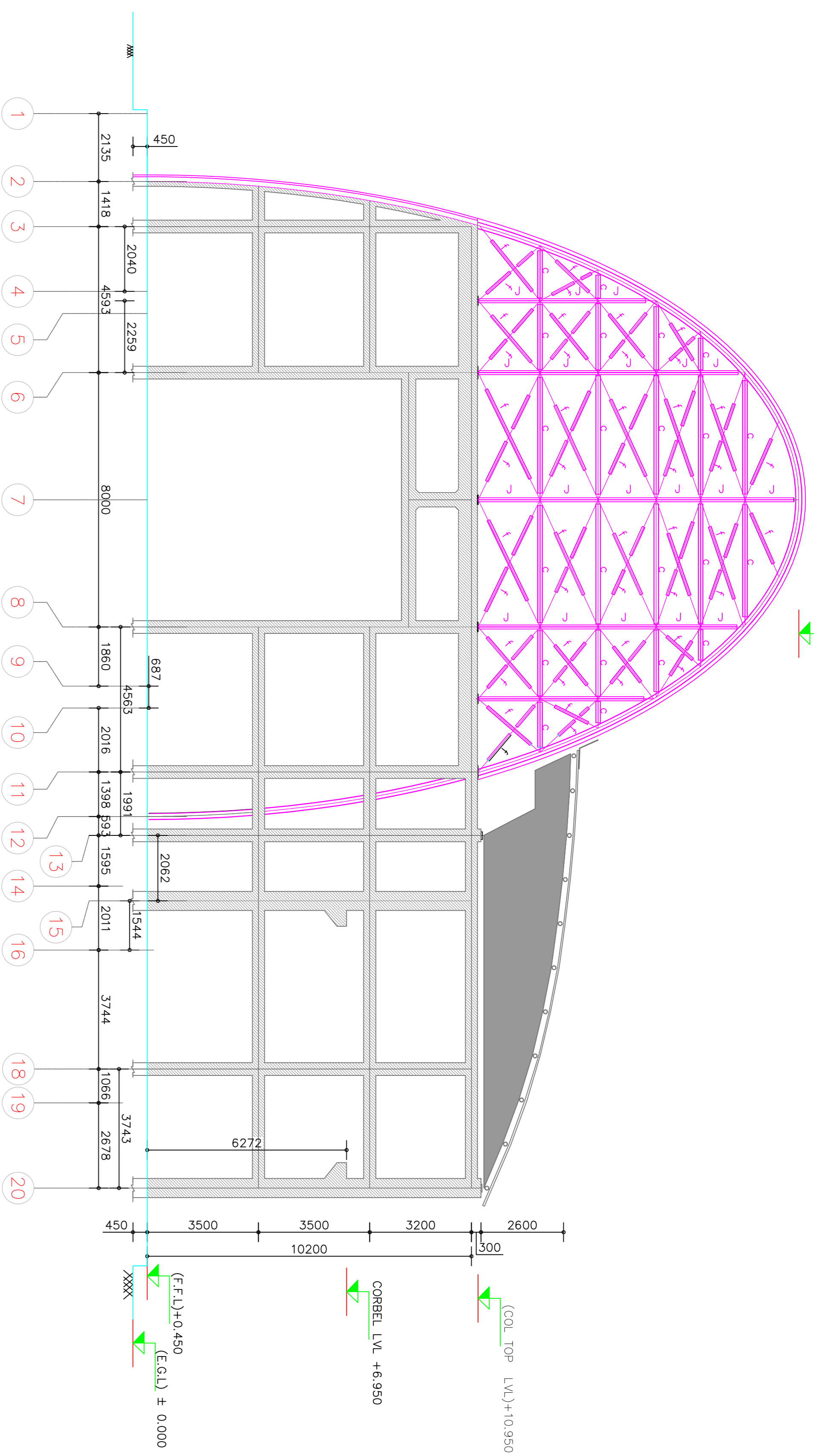
	AEROCON BRICK WALL
	75MM RUNNERS ARE WELDED TO COLUMNS AND THEN CLADDED WITH M.S. SHEETING

SIGNATURE	
CLIENT	B.H.E.L. R&D
CONSULTANT	designer's guid a 105, mount banjara, road no.12, banjara hills, hyderabad 500 034. + 91 40 30585657 satsri.dg@gmail.com

DRAWING VALIDITY	
DRAWN BY	SCALE
VANI.G	1:100
CHECKED BY	DATE
SATHYA	02-02-10
NORTH	

PROJECT TITLE	
PROPOSED HV LAB AT BHEL R&D, BALANAGAR, HYDERABAD.	
DRAWING TITLE	
WEST SIDE ELEVATION	
PROJECT NO.	REV. NO.
	R0
DRAWN NO.	DWG. NO.
	A-203

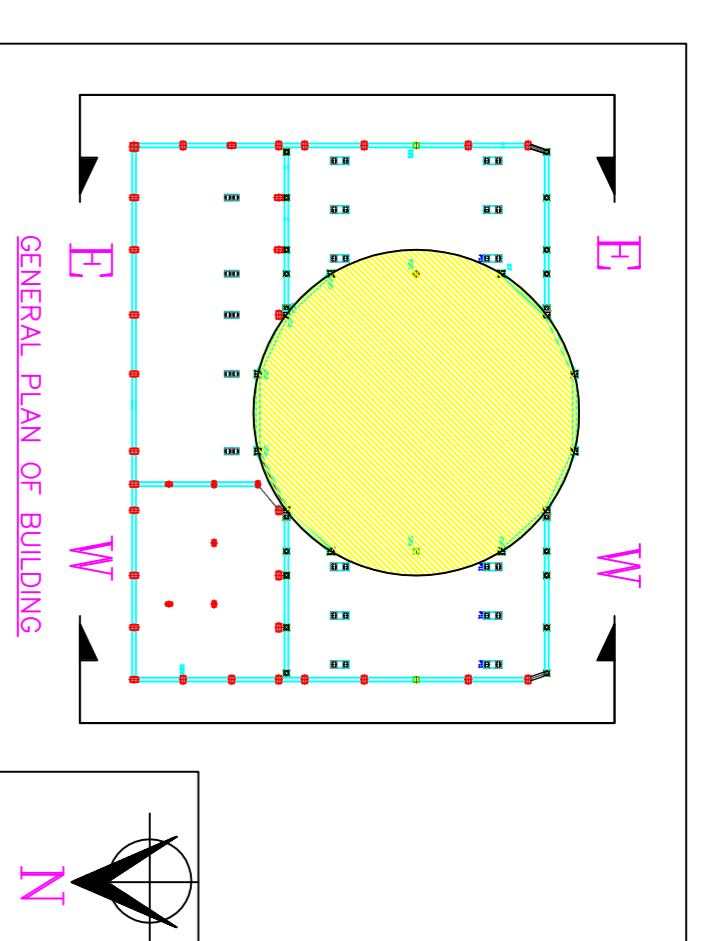
(Cylindrical Chamber Truss TOP LVL.) +20.950



(Cylindrical Chamber Truss TOP LVL.) +20.950

EAST SIDE VIEW

1:100



GENERAL PLAN OF BUILDING

- NOTES**
1. DIMENSION IN MILLIMETRES, LEVELS IN METRES.
 2. DON'T SCALE THE DIAGRAMS FROM DRAWING FOLLOW WRITTEN DIMENSIONS ONLY.
 3. LEVELS INDICATED REFER TO UPPER SIDE STEEL PROFILES.
 4. REFER GENERAL SPECIFICATION DRAWINGS FOR DETAILS.

STEEL MEMBERS LENGTHS IN EAST SIDE ELEVATION						
MEMBERS SCHEDULE	NO'S	NO OF JOINTS	TOTAL LENGTH (m)	WEIGHT/M RUN(KG)	TOTAL WEIGHT (KG)	REMARKS
c - ISMC 125 F/F/	22	64	61.56	25.40	1563.62	TIE MEMBERS
f - PIP 761.0H	46	212	157.53	7.93	1249.21	DIAGONAL BRACINGS
J - ISMB 250	5	18	38.186	37.30	1424.34	FRAME COLUMNS
TOTAL					4237.07	

STEEL MEMBERS LENGTHS IN WEST SIDE ELEVATION						
MEMBERS SCHEDULE	NO'S	NO OF JOINTS	TOTAL LENGTH (m)	WEIGHT/M RUN(KG)	TOTAL WEIGHT (KG)	REMARKS
c - ISMC 125 F/F/	22	64	61.56	25.40	1563.62	TIE MEMBERS
f - PIP 761.0H	46	212	157.53	7.93	1249.21	DIAGONAL BRACINGS
J - ISMB 250	5	18	38.186	37.30	1424.34	FRAME COLUMNS
TOTAL					4237.07	

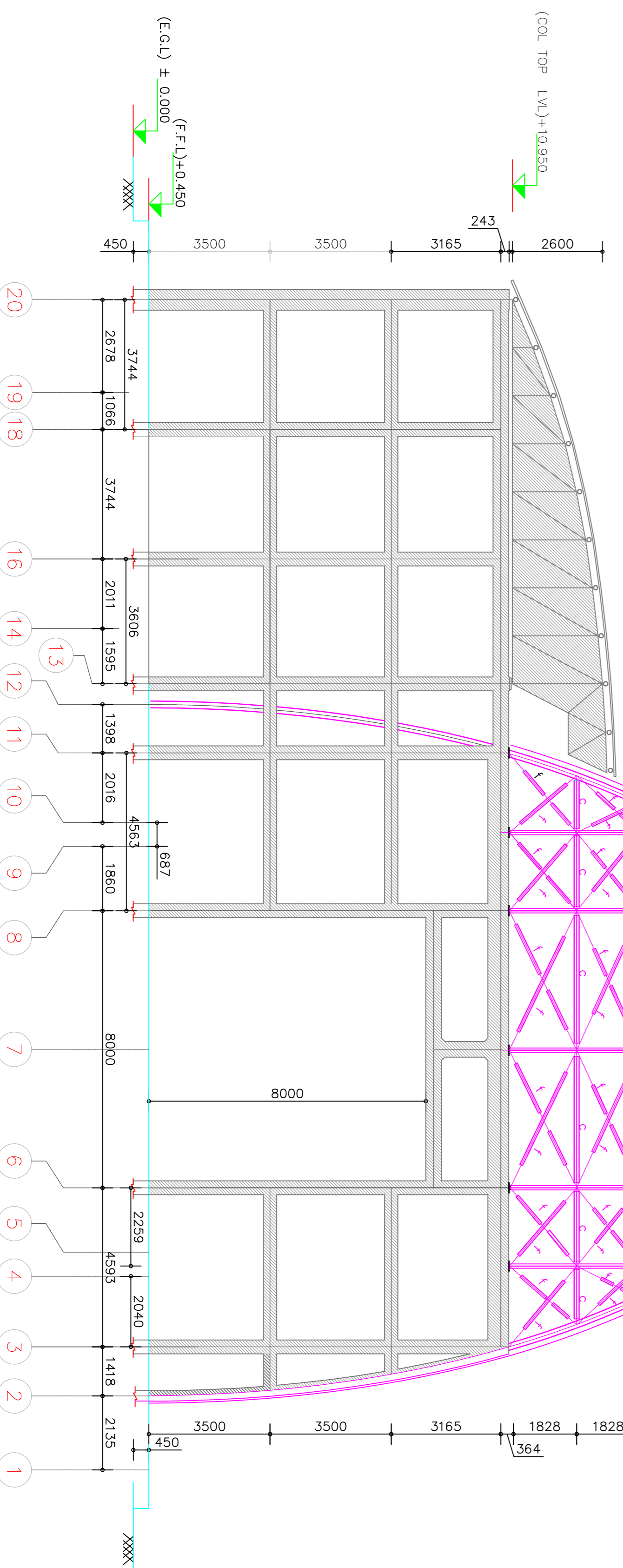
NOTE: MAGENTA COLOURED PORTION ONLY, IN THE SCOPE OF PRESENT TENDER.

TDR DRG No. 04

PROJECT: PROPOSED HV LAB AT BHEL R&D, BALANAGAR, HYDERABAD.

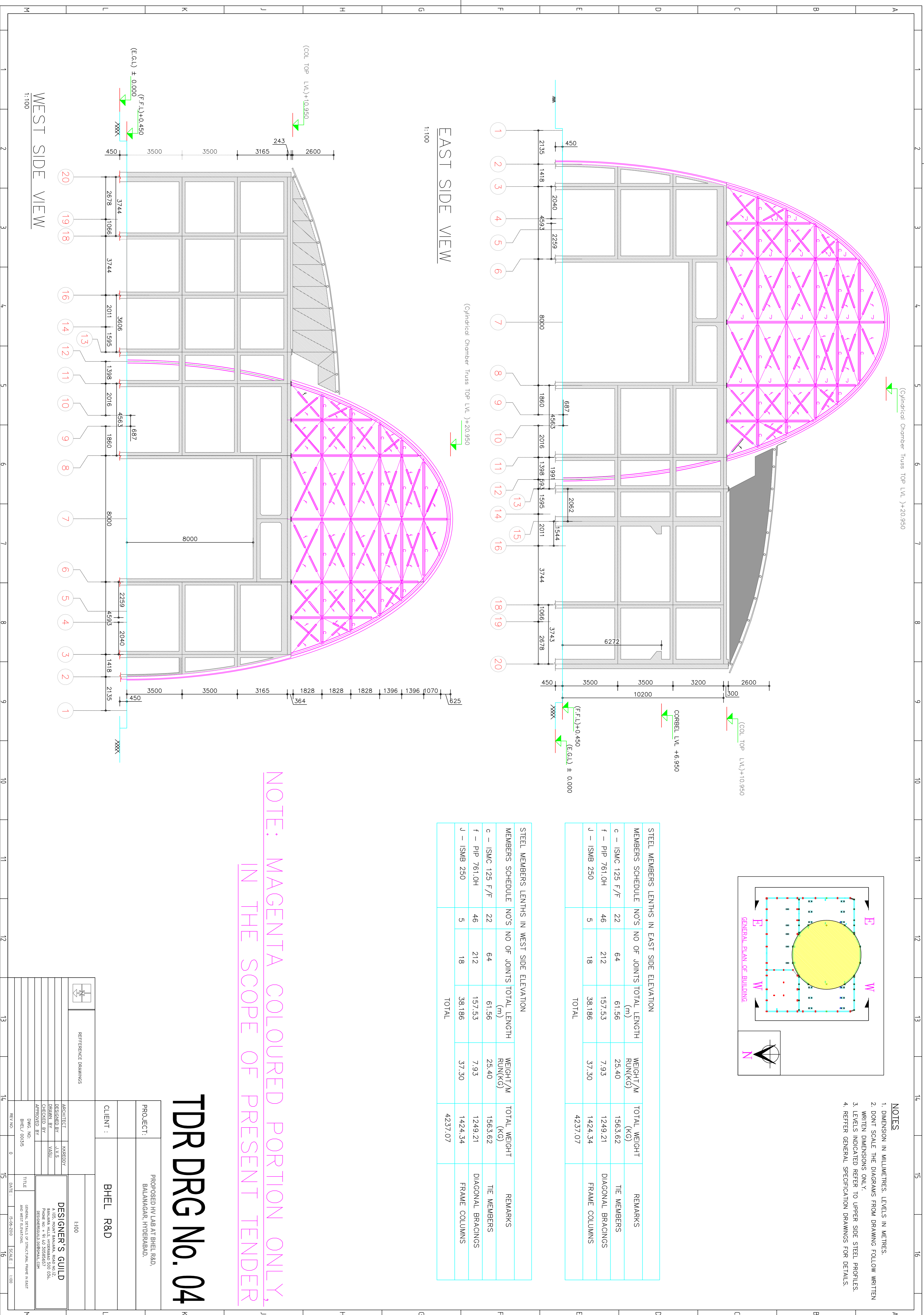
CLIENT: BHEL R&D

REFERENCE DRAWINGS		DESIGNER'S GUILD	
ARCHITECT	KREBERV	DESIGNER'S GUILD	A 105, HOBTI BALAJI, ROAD NO.12, BALAJI HILLS, HYDERABAD 500 041, TEL: 080-26000000, WWW.DESIGNERSGUILDINDIA.COM
DESIGNER BY	JAYS	APPROVED BY	
DRAWN BY	VASU	DWG. NO.	GENERAL DETAILS OF STRUCTURAL FRAME IN EAST AND WEST ELEVATIONS.
APPROVED BY		BHEL/001515	
DATE	15-06-2010	SCALE	1:100

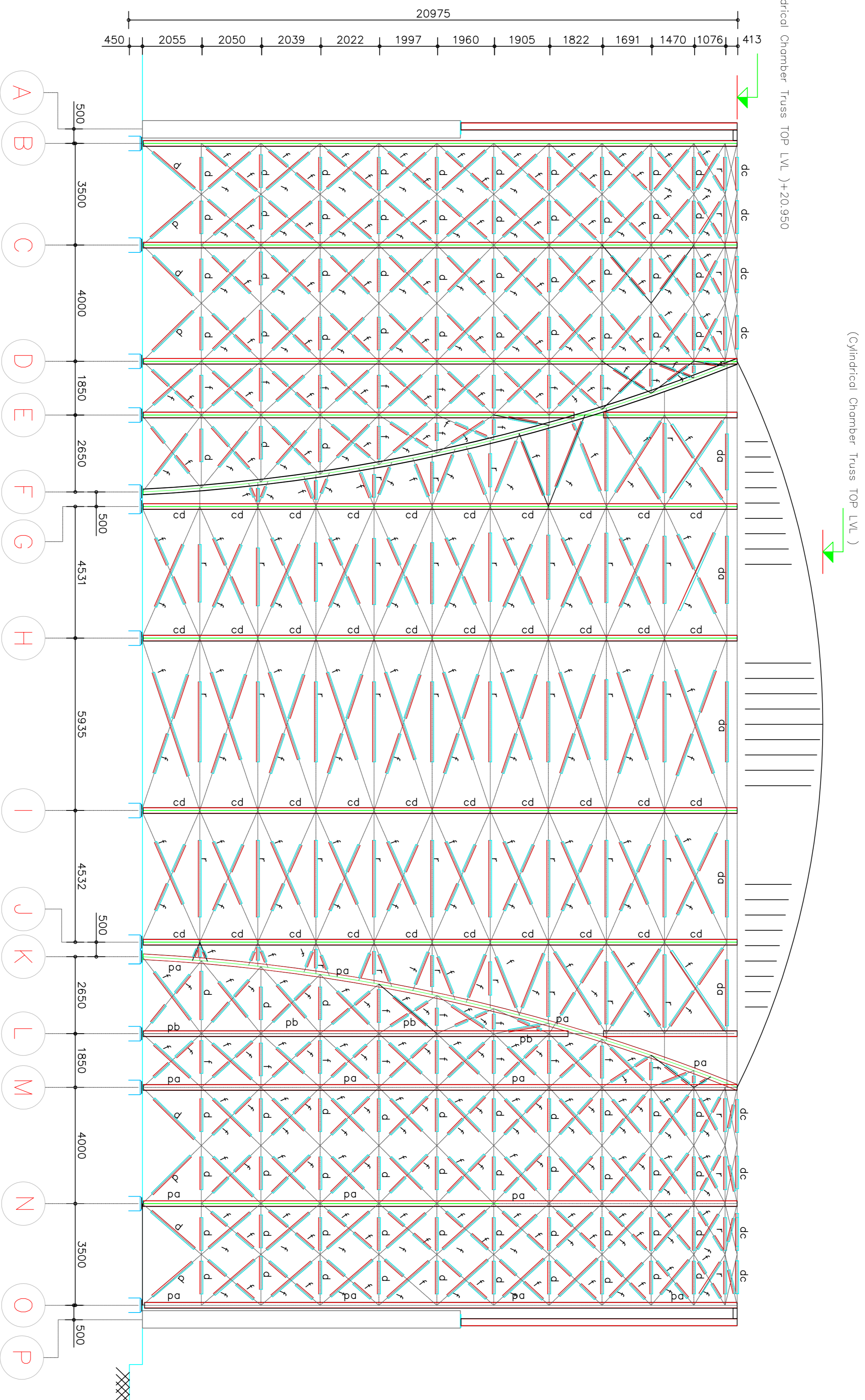


WEST SIDE VIEW

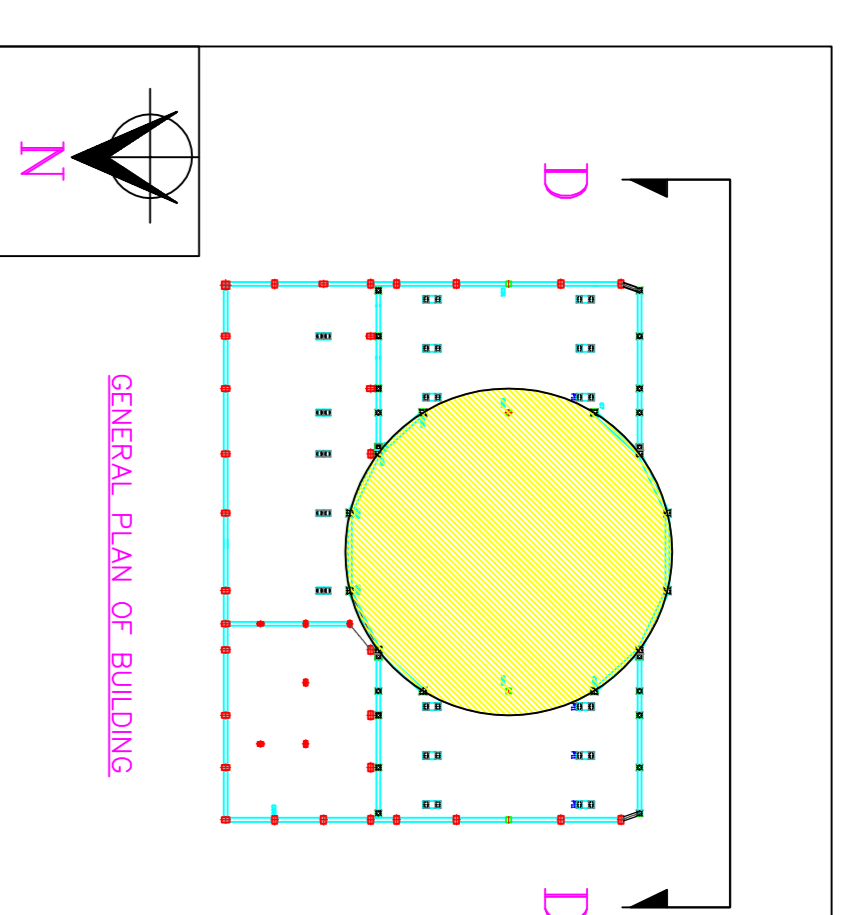
1:100



TDR DRG No. 05



SOUTH SIDE VIEW WITHOUT CLADDING (PARABOLIC DOME)
1:100



GENERAL PLAN OF BUILDING

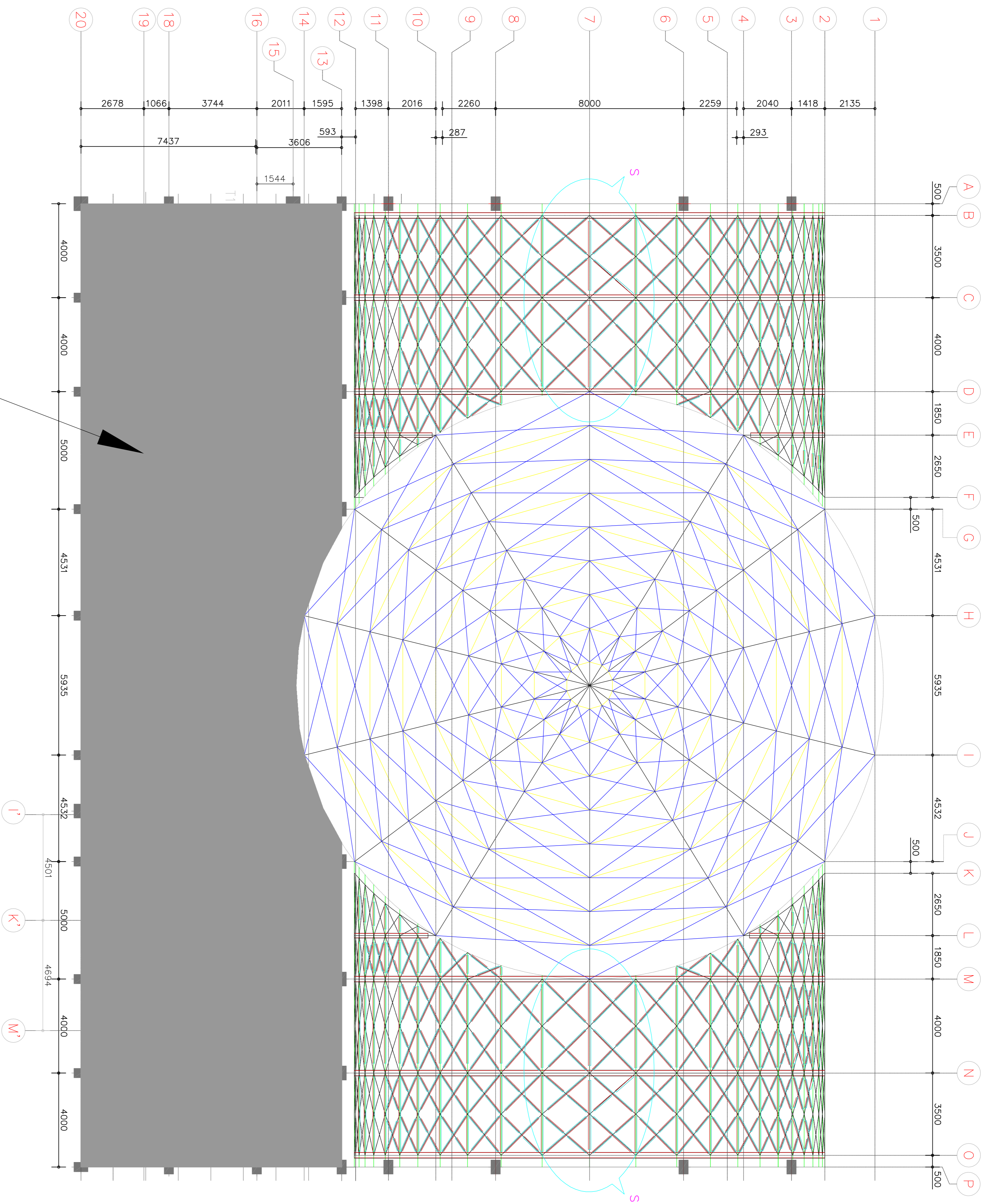
MEMBER DETAILS AND WEIGHTS BOTH IN SOUTH AND NORTH SIDE ELEVATIONS(SYMMETRIC BOTH SIDES)						
MEMBERS SCHEDULE	NOS	GRID LINE	TOTAL LENGTH (m)	UNIT WEIGHT (KG/M)	TOTAL WEIGHT (KG)	REMARKS
pd - PIP 244.5H(NB-225H)	6	B-C,D,M,N,O	295.86	34.7	10269	PARABOLIC COLUMNS
	2	E,L	64.18	31.0	2063	PARABOLIC COLUMNS
pb - PIP 219.1H(NB-200H)	2	F,K	92.64	31.0	2871	PARABOLIC COLUMNS
	40	B-C, N-O	140	1386	1584	HORIZONTAL TIES
d - PIP 889.0H(NB-80H)	40	C-D, M-N	160	1584	1584	HORIZONTAL TIES
	12	E-F, K-L	27.45	9.90	271.8	HORIZONTAL TIES
f - PIP 761.0H(NB-65H)	16	B-C, N-O	44.22	437.8	437.8	BOTTOM DIAGONAL BRACINGS
	32	B-C, N-O	85.68	849.02	849.02	TOP DIAGONAL BRACINGS
r - PIP 1016.0L(NB-90L)	52	D-E, L-M	82.13	639.5	639.5	HORIZONTAL TIES
	160	B-C, N-O	430.1	341.7	341.7	HORIZONTAL TIES
dc - PIP 152.4L(NB-135L)	160	C-D, M-N	459.1	3640.2	3640.2	DIAGONAL BRACINGS
	16	D-E, L-M	31.22	247.61	247.61	DIAGONAL BRACINGS
cd - PIP 273.0H(NB-250H)	52	E-F, K-L	146.06	1158	1158	HORIZONTAL TIES
	64	D-E, L-M	175.44	1393.65	1393.65	HORIZONTAL TIES
g - PIP 1016.0L(NB-90L)	8	B-C, N-O	30	8.70	261	HORIZONTAL TIES
	4	C-D, M-N	15	16.40	246	HORIZONTAL TIES
h - PIP 1016.0L(NB-90L)	12	D-M	246	38.90	9569	MAIN COLUMNS
	36	E-G, J-L	168.48	1465.78	1465.78	MAIN COLUMNS
i - PIP 761.0H(NB-65H)	36	G-H, I-J	180.40	8.70	1569.13	HORIZONTAL TIES
	18	H-I	106.74	928.64	928.64	HORIZONTAL TIES
j - PIP 761.0H(NB-65H)	80	E-G, J-L	418.5	331.4	331.4	DIAGONAL BRACINGS
	80	G-H, I-J	417.6	7.93	330.7	DIAGONAL BRACINGS
k - PIP 114.3L(NB-100L)	40	H-I	250.5	1984	1984	DIAGONAL BRACINGS
	4	E-G, J-L	18.72	182.5	182.5	DIAGONAL BRACINGS
l - PIP 114.3L(NB-100L)	4	G-H, I-J	10.02	9.75	97.72	TOP HORIZONTAL TIES
	2	H-I	23.72	231.3	231.3	TOP HORIZONTAL TIES
TOTAL			53383		53383	

- NOTES
- DIMENSION IN MILLIMETRES. LEVELS IN METRES.
 - DONT SCALE THE DIAGRAMS FROM DRAWING FOLLOW WRITTEN DIMENSIONS ONLY.
 - WRITTEN DIMENSIONS ONLY.
 - LEVELS INDICATED REFER TO UPPER SIDE STEEL PROFILES. REFER GENERAL SPECIFICATION DRAWINGS FOR DETAILS.

PROJECT: PROPOSED HV LAB AT BHEL R&D,
BALANAGAR, HYDERABAD.

CLIENT: BHEL R&D

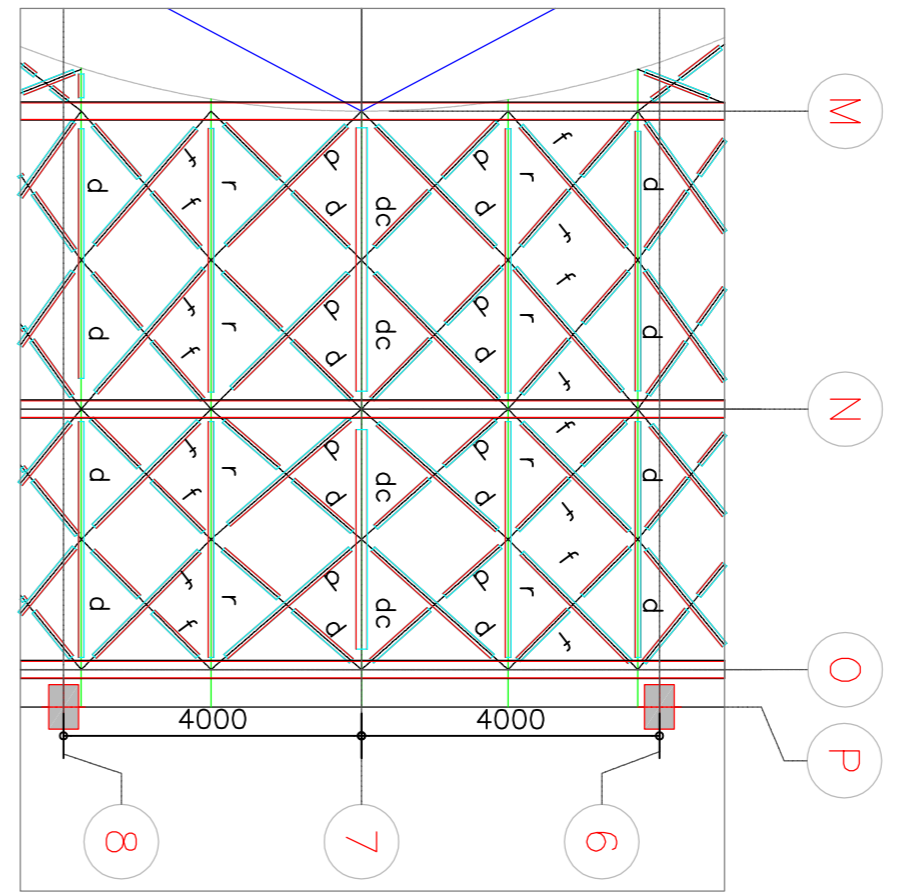
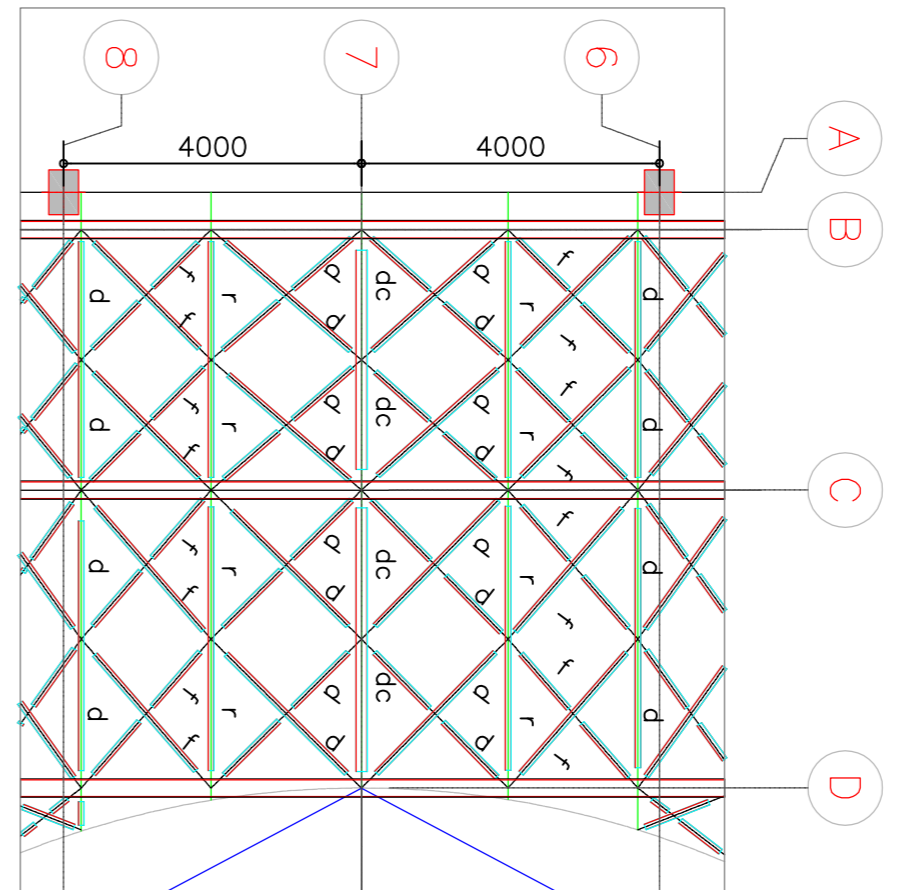
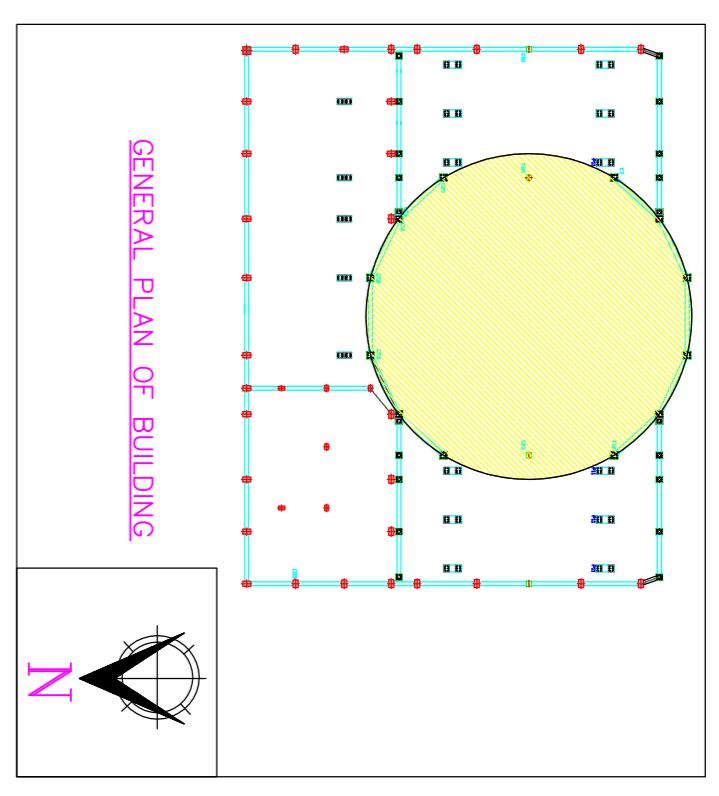
ARCHITECT	KRIBDEVY	DESIGNER'S GUILD
DESIGNER BY	SVS	A 105, KANT BANJARA, ROAD NO.12, BANJARA HILLS, HYDERABAD 500 034, INDIA
APPROVED BY	SVS	DESIGNER'S GUILD
DWG. NO.	BHEL_00355	GENERAL DETAILS OF FRAME IN NORTH AND SOUTH OF HV LAB
REV. NO.	0	DATE: 15-06-2010
SCALE:	1:100	



HATCHED STRUCTURE IS NOT IN SCOPE OF PRESENT TENDER

GENERAL TOP VIEW OF STRUCTURAL FRAME

SCALE 1:100



MEMBER DETAILS	
f	PIP 761.0H(NB-65H)
d	PIP 889.0H(NB-80H)
r	PIP 1016.0L(NB 90L)
dc	PIP 165.1M(NB 150M)

- NOTES**
1. DIMENSION IN MILLIMETRES. LEVELS IN METRES.
 2. DON'T SCALE THE DIAGRAMS FROM DRAWING FOLLOW WRITTEN WRITEN DIMENSIONS ONLY.
 3. LEVELS INDICATED REFER TO UPPER SIDE STEEL PROFILES.
 4. REFER GENERAL SPECIFICATION DRAWINGS FOR DETAILS.

TDR DRG No. 06

PROPOSED HV LAB AT BHEL R&D, BALANAGAR, HYDERABAD.

CLIENT : BHEL R&D



REFERENCE DRAWINGS

REV. NO.	DATE	SCALE
0	15-09-2010	1:100
15		
16		
13		

DESIGNER'S GUILD	
ARCHITECT	KREEDDY
DESIGNED BY	L.V.S
DRAWN BY	VASU
CHECKED BY	
APPROVED BY	
DWG. NO.	BHEL/001515
TITLE	GENERAL TOP VIEW OF STRUCTURAL FRAME