

- 1. GROSS WEIGHT OF WAGON = 187.8T
- PAY LOAD (WT. OF TG STATOR) = 258.0T
- 2. AXLE LOAD = 18.57T
- 3. MAXIMUM LOAD ON EACH PEDESTAL = 125.0T
- ACTUAL LOADING AREA = 1.6 M²
- 4. ϕ LOCATION OF RAIL TRACK w.r.t. A ROW (REF. NTPC DRG. PE-DG-200-100-M201) = 4500 MM

LIST OF ITEMS

ITEM NO.	DESCRIPTION	QTY.	UNIT WT. IN KGS
1	BOTTOM PDEASTAL	4	1305
2	AUXILIARY PDEASTAL	4	260
3	175T HYDRAULIC JACK	4	250
4	SHIM 260X150X0.5	AS REQD	0.15
5	SHIM 260X150X3.15	"	0.96
6	SHIM 260X150X6	"	1.22
7	SHIM 260X150X10	"	3.04
8	SHIM	16	11.7
9	HYDRAULIC TROLLEY	1	3500
10	CARRIER END SHIELD	2	4260
11	STOPPER SUPPORT	2	141
12	ROLLER BLOCK	4	91.3
13	SUPPORT BEAM	2	18.3

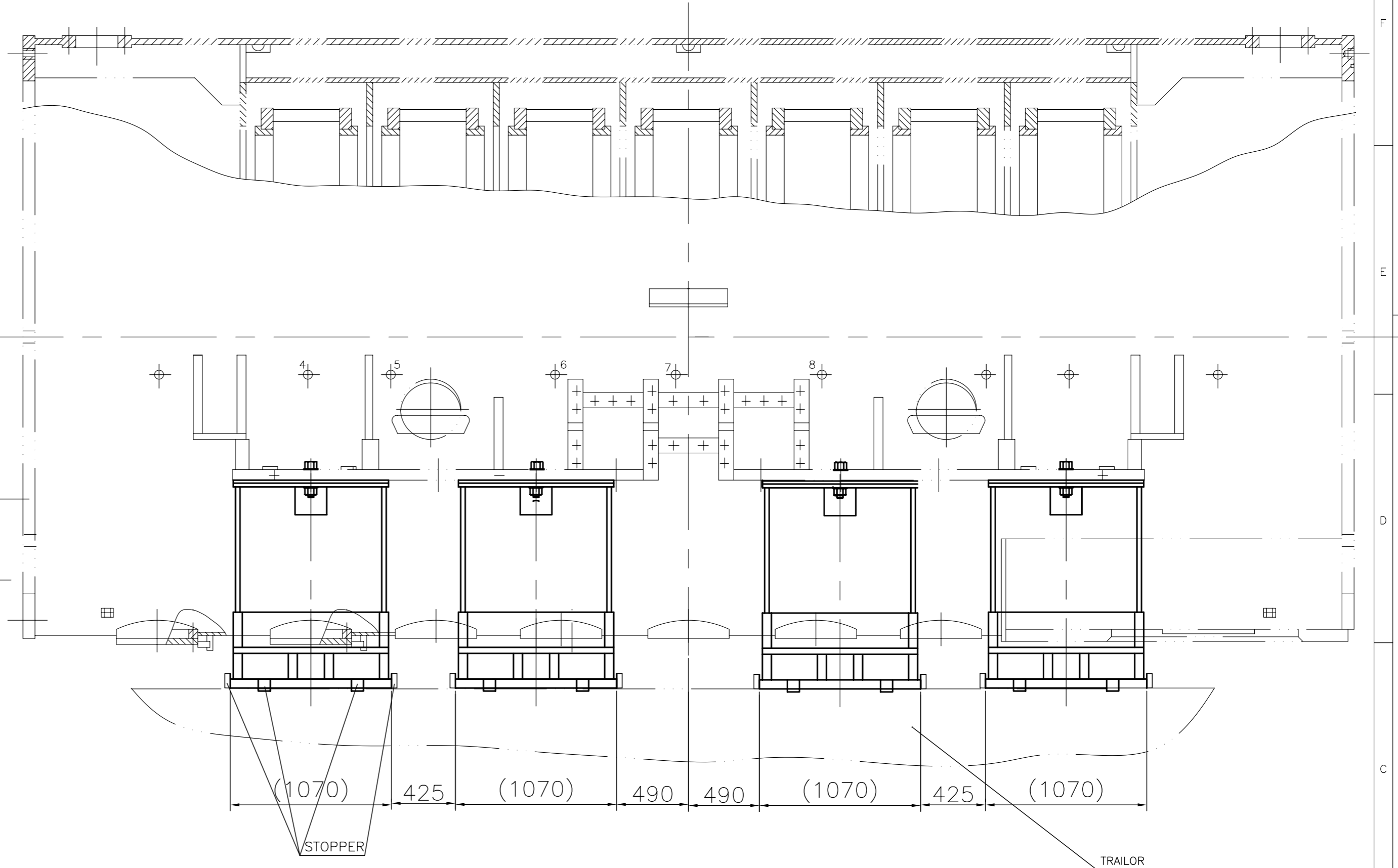
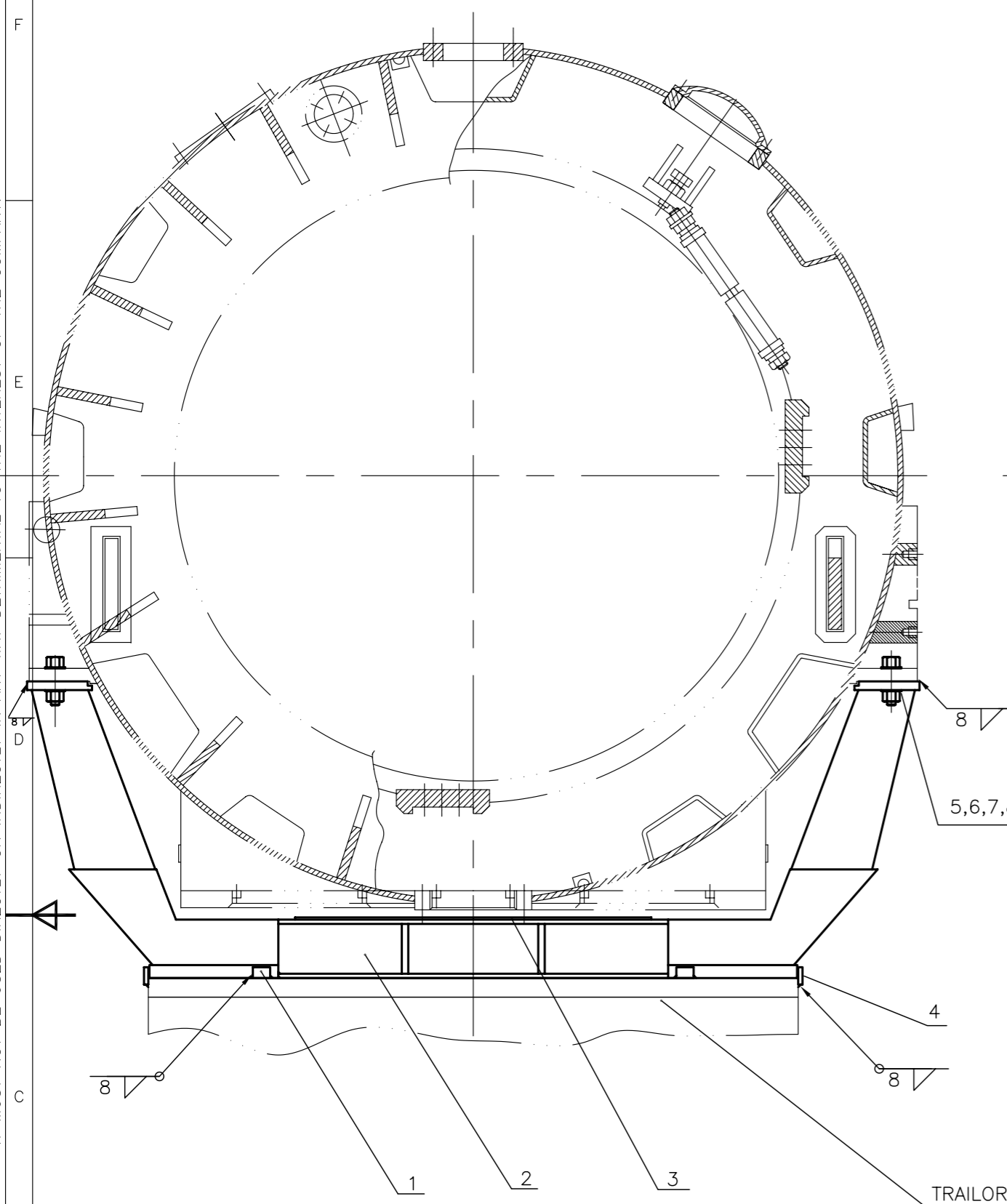
GRADE OF UNTOLDIM	M/CC - G/M/F AA0230208	WELDING - A/B/E/B AA0621104	GAS CUTTING - T3'AA0621101
DEPT TGE	SCALE 1:75	WEIGHT (KG)	REF. TO ASSY. DRG.
CODE 4133			
TITLE: STATOR LOADING AND UNLOADING WITH 300T SPL WAGON DRAWING NO: 0-139-38-01022C SHEET No. 01 No. OF SHEETS 01			

THE INFORMATION ON THIS DOCUMENT IS THE PROPERTY OF BHARAT HEAVY ELECTRICALS LIMITED. IT MUST NOT BE USED DIRECTLY OR INDIRECTLY IN ANY WAY DETRIMENTAL TO THE INTEREST OF THE COMPANY.

02010-8E-6E1-2
DRAWING NO.

7 6 5 4 3 2 1

COPYRIGHT AND CONFIDENTIAL
THE INFORMATION ON THIS DOCUMENT IS THE PROPERTY OF BHARAT HEAVY ELECTRICALS LIMITED
IT MUST NOT BE USED DIRECTLY OR INDIRECTLY IN ANY WAY DETRIMENTAL TO THE INTEREST OF THE COMPANY.



TECHNICAL REQUIREMENTS

1. IDENTIFICATION ACCORDING TO HW0400397.
2. THE TRAILOR PLATFORM MUST BE CONTINUOUS AND CAPABLE OF TAKING LOADS NEAR EDGES OF ITS WIDTH.
3. THE TRAILOR PLATFORM MUST HAVE A WIDTH MORE THAN 2990 MM.
4. FOR UNIFORM LOADING STEEL SHIMS ITEM 8 TO BE USED FOR LEVELLING.

ITEM	DESCRIPTION &	QTY.
1	PLATE 50X80X80	8 Nos.
2	FIXTURE FOR ROAD TRANSPORT	4 Nos.
3	RUBBER SHEET 5X1000X1600	8 Nos.
4	PLATE 40X100X100	16 Nos.
5	SCRU HEX.	8 Nos.
6	WASHER	16 Nos.
7	NUT HEX.	8 Nos.
8	SHIM 0.5X400X250	4 Nos.

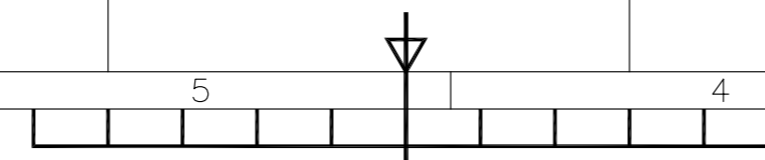
GRADE OF UNTOL. DIM.:-		
M/GG	V/C/M/F AA 0230208	
WELDING	A/B/C/D-AA621104	
GAS CUTTING	T3'AA0621101	
REV.	DATE	ALTERED
		CHECKED

CBOM NO. 21393801070		STATUS OF DRG.	
AGREED DEPT.	NAME	SIGN	DATE
EMT	KOHLI	SD/-	11.1.2002

TYPE OF PRODUCT OR NAME OF CUSTOMER/ PROJECT		500MW TG			
--	--	----------	--	--	--

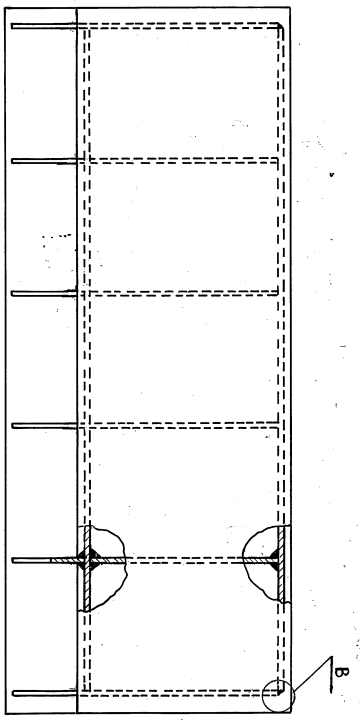
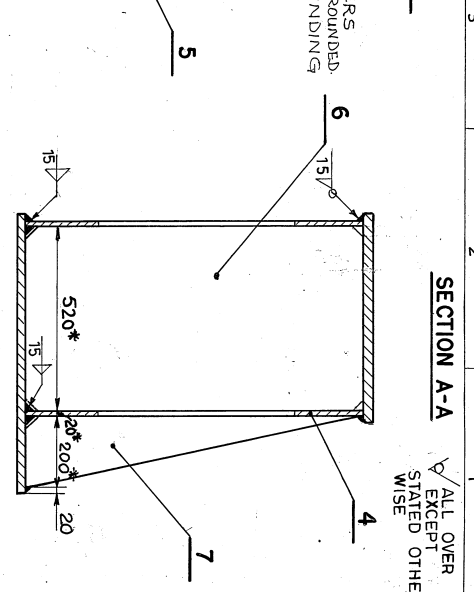
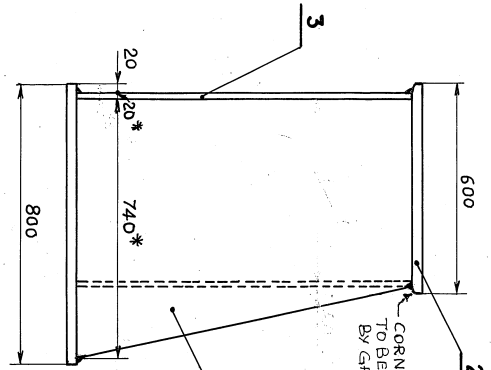
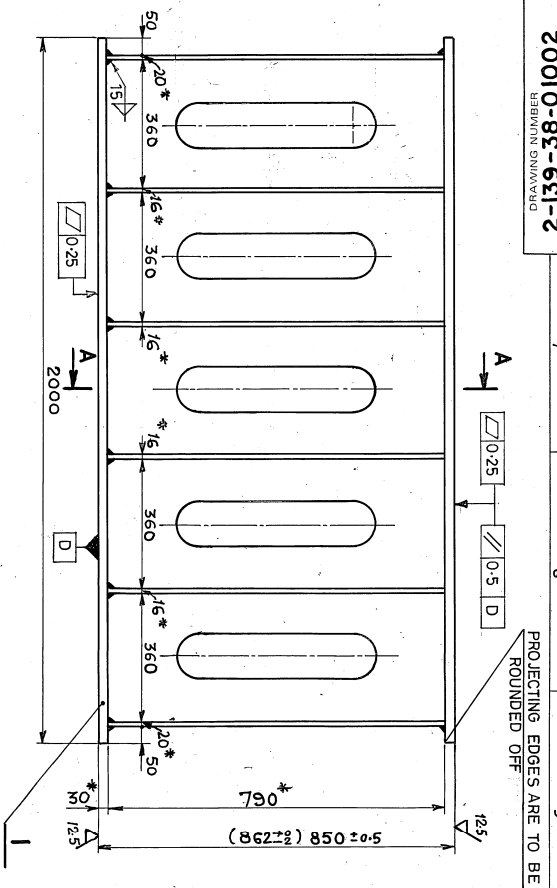
DEPT. TGE		SCALE 1:20	WEIGHT(Kg.) 18772	REF. TO ASSY. DRG. -	ITEM NO. 75, 77
CODE 4133	TITLE		DRAWING NO. 2-139-38-01070		

TITLE		ARRANGEMENT FOR LOADING OF STATOR			
SHEET NO. 01		NO.OF SHEETS 01			



20010-82-631-2
REVISIONS
DRAWN BY

FIRST ANGLE PROJECTION (ALL DIMENSIONS ARE IN mm)



DETAIL B (WITH ITEM 2 REMOVED)

TECHNICAL REQUIREMENTS

1. MACHINING TO BE DONE AFTER COMPLETION OF WELDING AND STRESS RELIEVING.
2. TEST SCOPE OF WELDING AS PER STD. HW 0850.199. CLASS-3.
3. BOTTOM PEDESTAL TO BE PAINTED AS PER INSTRUCTION 0922.005 (BEFORE MACHINING).
4. DIMENSIONS GIVEN IN BRACKET CORRESPOND TO WELDED ASSEMBLY.
5. ALL WELD SEAMS SHALL BE OF SIZE 10/2 EXCEPT STATED OTHERWISE.
6. ALL PEDESTAL MUST BE OF EQUAL HEIGHT OF ONE PLANT ORDER.
7. DIMENSIONS MARKED * ARE GIVEN FOR REFERENCE ONLY.
8. ALL RIBS ITEM 6 MUST TOUCH TOP PLATE ITEM 2 FOR UNIFORM LOAD TRANSFER.

VAR 00	REMARKS	ITEM NO.	DESCRIPTION	DWG. NO.	VAR. MATERIAL SPECN	UNIT WTKG
-		008	DEPOSITED METAL	-	E-7018	5.14
004		007	RIB	4-139-38-01022	AA101808110	09.182
004		006	RIB	4-139-38-01021	AA101808110	51.111
002		005	RIB	4-139-38-01020	AA101819139	79.180
001		004	SIDE PLATE	3-139-38-01006	AA101819139	184.343
001		003	SIDE PLATE	3-139-38-01006	AA10119	185.087
001		002	TOP PLATE	-	AA101819180	282.600
001		001	BOTTOM PLATE	-	AA10119	376.800

CONS. GR. NO.	STATUS OF DRG.	DATE
2-139-38-01002	ALTERED	25.4.85
WT	NAME	SIGN.
P. COYAL	P. COYAL	

TYPE OF PRODUCT OR NAME OF CUSTOMER / PROJECT	DRAWING NO.	VAR. MATERIAL SPECN	UNIT WTKG
TG - HW-0500 - 2			

BHARAT HEAVY ELECTRICALS LTD
RAIPUR - HARDWAR

DATE: 18.6.85
BY: R.K. GUPTA
CHK: K.S. KESSEKRAM

SCALE: 1:10
WEIGHT (KG): 1305.0
CARD CODE: 2-139-38-01002

INVENTORY NO.	SIGN & DATE	REF. DRG. NO.
E-1-10691	22/1/85	

REV. DATE	ALTERED	CHECKED	ZONE

