



BHARAT HEAVY ELECTRICALS LIMITED

CORPORATE RESEARCH & DEVELOPMENT DIVISION

VIKASNAGAR, HYDERABAD - 500 093, INDIA

PHONES: 23774494 (EXCHANGE)

DIRECT: 23882104/23882204/
23778474/23776772

FAX : 91 40 23770698

RD:DP:MPX:F-04

ENQUIRY

To - Enquiry No: 440805221 Enq Date: 26-NOV-08 Due Date: 03-JAN-09 Delivery By:

Pin -

Email :

Attn .

PLEASE SUBMIT YOUR QUOTATION IN SEALED COVER SUPERSCRIBED WITH ENQUIRY NO, ENQUIRY DATE AND DUE DATE SUBJECT TO OUR TERMS AND CONDITIONS ENCLOSED, FOR THE FOLLOWING MATERIALS SO AS TO REACH US ON OR BEFORE THE DUE DATE BY 12 NOON. THE TENDERS WILL BE OPENED AT 2 PM ON THE SAME DAY

PLEASE GIVE REFERENCE OF ENQ NUMBER , ENQ .DATE AND DUE DATE IN ALL YOUR CORRESPONDENCE FOR PROMPT ACTION. IN CASE IF YOU ARE NOT MAKING THE OFFER PLEASE POST A REGRET LETTER AND RETURN THE DOCUMENTS.

SL NO	DESCRIPTION / SPECIFICATION	UNIT	QTY
1	DATA ACQUISITION SYSTEM FOR BLADE VIBRATION MONITORING [DETAILED SPECIFICATIONS ENCLOSED]	NO	1
2	INTERFACE UNITS FOR SENSOR AMPLIFIER AND TIMER CARD OF DATA ACQUISITION SYSTEM. [DETAILED SPECIFICATIONS ENCLOSED. THE QUANTITY SHOULD BE SUCH THAT IT MAKES A 12 CHANNEL SYSTEM. THE QUANTITY OF 4 MENTIONED HERE IS PREFERABLE NOT COMPULSORY.]	NO	4
3	PREAMPLIFIER FOR SENSORS WITH CABLES [DETAILED SPECIFICATIONS ENCLOSED. THE QUANTITY SHOULD BE SUCH THAT IT MAKES A 12 CHANNEL SYSTEM. THE QUANTITY OF 4 MENTIONED HERE IS PREFERABLE NOT COMPULSORY.]	NO	4
4	EDDY CURRENT PROBES [DETAILED SPECIFICATIONS ENCLOSED]	NO	5
5	BLADE AND DISC HEALTH MONITOR SOFTWARE [DETAILED SPECIFICATIONS ENCLOSED]	NO	1

Please submit your offer in Two parts as per enclosed "General Terms and Conditions of enquiry & Contract for the purchase of Goods/ Services" in separate sealed covers as detailed below:

1) First cover shall contain a) Technical & Commercial bid, b) Compliance Statement, c) Un-priced Price bid, i.e. a copy of the Price bid with the price(s) columns left blank.

2) Second Cover containing Price bid.

If the Price bid is found to be different from the un-Priced Price bid in any way, the offer will be rejected.

3) GUARANTEE CERTIFICATE : REQUIRED

4) MANUFACTURER'S TEST CERTIFICATE : REQUIRED

Note:

1) Unsigned offer(s) are liable for rejection.

2) Taxes & Duties quoted will be taken for cost evaluation & order placement and no change will be entertained later except in the case of changes made by the Government.

3) Changes in Taxes and Duties because of the changes in Turnover etc. will be to the supplier's account.

4) In case any Taxes/duties exempted, a self declaration for the same may be attached to the offer.

AS WE ARE ENGAGED IN R&D ACTIVITY "C" FORM WILL NOT BE ISSUED

Yours faithfully



BHARAT HEAVY ELECTRICALS LIMITED

CORPORATE RESEARCH & DEVELOPMENT DIVISION
VIKASNAGAR, HYDERABAD - 500 093, INDIA

ENQUIRY

PHONES: 23774494 (EXCHANGE)

DIRECT: 23882104/23882204/
23778474/23776772

FAX : 91 40 23770698

RD:DP:MPX:F-04

PLEASE FILL UP THE ENCLOSED VENDOR REGISTRATION FORM
AND SEND IT ALONG WITH YOUR QUOTATION. OTHERWISE
YOUR QUOTATION WILL NOT BE CONSIDERED. (IGNORE THIS IF
YOU HAVE ALREADY SUBMITTED THIS FORM)

for
BHARAT HEAVY ELECTRICALS LTD

NARSIMHA RAO N

Manager

Email: nnrao@bhelrnd.co.in

SPECIFICATIONS OF BLADE VIBRATION MONITORING SYSTEM COMPONENTS

OBJECTIVE:

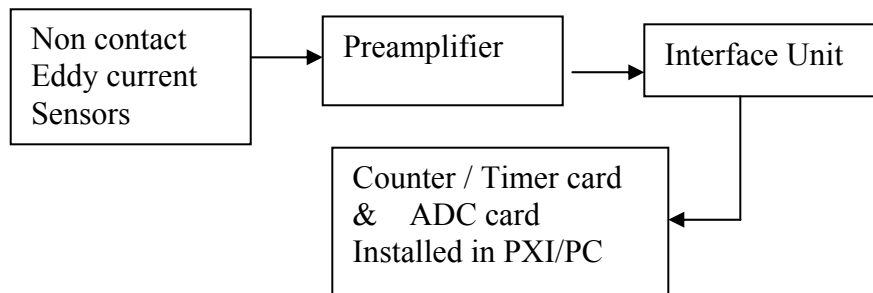
The objective is to procure components for a portable PXI based monitoring system to measure on-line vibrations of blades of a large size LP steam turbine under rotating conditions. Large size LP turbines have typically 80 – 120 blades in the last stage. The tip-to-tip diameter of the bladed disk is around 3.5m to 3.9m. The rated speed of turbine is 3000 rpm and the maximum speed of the turbine is 3300 rpm.

The monitoring system will be based on the principal of detecting Time of arrival (TOA) of blades during running with the help of non contact passive type eddy current sensors. The signal of TOA of blades taken from the sensors is conditioned and interfaced with the Timer/Counter card installed in a PXI based data acquisition system. This data will be acquired and analyzed using the existing software available with BHEL (R&D) to know the vibration behavior of the blades wherein amplitude of vibration at different modes of vibration and information regarding blade tip clearance, occurrences of stall/surge, flutter etc. is obtained. BHEL (R&D) has earlier successfully tested such a system on a small steam turbine. The present scope of work includes supply of hardware along with its drivers so as to configure the existing software and integrate it with the hardware.

Description of Blade vibration Monitoring System:

The system consists of Eddy current sensors, preamplifier to condition signal from turbine to the system, interface for counter card and counter/timer card. The data acquired is analyzed to find out vibration behavior of blades and disc.

Functional block diagram -



- Eddy Current Sensors will be mounted in turbine casing above the blade - about 5 sensors per stage of blades
- One per rev. signal for speed reference will be taken from the standard key-phasor signal of turbine.
- Low noise pre-amplifiers will condition the signal.
- The interface unit shall accept signal from preamplifier and send pulses to the host computer. The pulses shall encode both Time of Arrival (TOA) and pulse amplitude.

- Counter/Timer card(s) to receive pulses from both eddy current and one per rev. sensors.
- ADC card will receive analogue signal of sensors to view it in the oscilloscope mode
- The available acquisition and analysis software will use data from all sensors and the reference sensor to provide estimates of blade resonance, resonance magnitude, vibration phase relative to shaft and asynchronous vibrations.

SPECIFICATIONS:

E-01 Data acquisition system for Blade Vibration Monitoring

- PXI based portable rack mounted factory integrated data acquisition system for Blade vibration Monitoring (BVMS) of steam turbine based on Time-of-arrival measurement principle, suitable for 12 No. of channels.
- The system should contain counter/Timer cards to receive signals at clock speeds selectable at 20MHz or 80MHz.
- It should also have A/D cards for viewing the signals in the oscilloscope mode.
- The system should provide facility for remote monitoring.
- The acquisition and analysis software available with BHEL (R&D) will be used in this system to analyze the vibration behavior of blades. The hardware of DAQ will be integrated with the software using the drivers supplied.

E-02 Interface units for sensor amplifier with timer card of data acquisition system

- This unit is meant to interface the preamps with counter/timer cards. The conditioned signal of Eddy current sensors will be converted in pulses to input to Timer card. The quantity of these units should be so as to make a 12 channel system. It should have same number of channels as that of the Pre-Amp, preferably 2-3 channels per unit.

E-03 Pre-Amp with cables

- The quantity of these units will be so as to make a 12 channel system. Each unit should preferably take 2 -3 number of eddy current sensors
- Input with standard BNC connectors.
- Output must be standard DB-9 serial cable. Maximum length of output cable required is around 20m-30m. Price per meter of length may be quoted.
- Pre-amp should operate on +/- 12V DC.
- Gain options to be 1X, 10X, 20X chosen independently for each channel.
- Also it should have provision for attenuation.
- Pre-amp should be of compact size.

E-04 Eddy current Sensor

These sensors are required for Blade Vibration Monitoring of steam turbines, where the tip-to-tip diameter of the bladed disk is around 3.8m- 3.9m, with a

maximum speed of 3300 rpm. BHEL will provide suitable fixture for fitting the sensor in the turbine casing. The design of sensor flange should be compatible with this fixture. The sensor will be housed in a turbine casing of thickness about 30mm-35mm in such a manner that either it is either flushed with or just inside the casing surface facing the bladed rotor. Preliminary sketches of probe and its fixing arrangement are enclosed.

- Passive type with a permanent DC magnet, in a case as per BHEL suggested configuration and calibrated for clearance measurement.
- Diameter – Around 12-15 mm, Length – Around -60 mm.
- Gap from blade – About 14 mm
- Max. Temp - 150⁰C under wet steam and vacuum environment.
- Bandwidth of at least 200kHz
- Output cable - A total length of 20m of cable will be required from sensor to Pre amplifier, inside the wet steam environment. A cable of 10m can be integral with the sensor. Another BNC to BNC cable of length of 10m will be further added.
- Sensing face of sensor should resistant to corrosion and erosion.

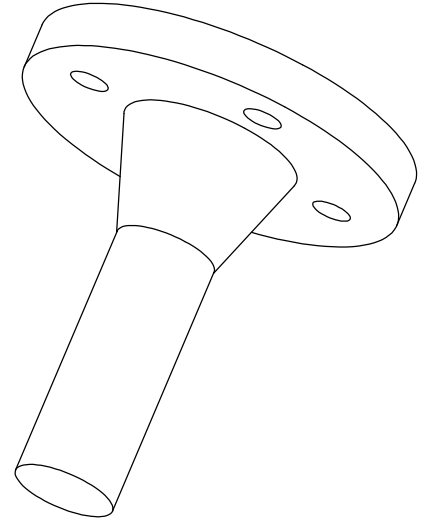
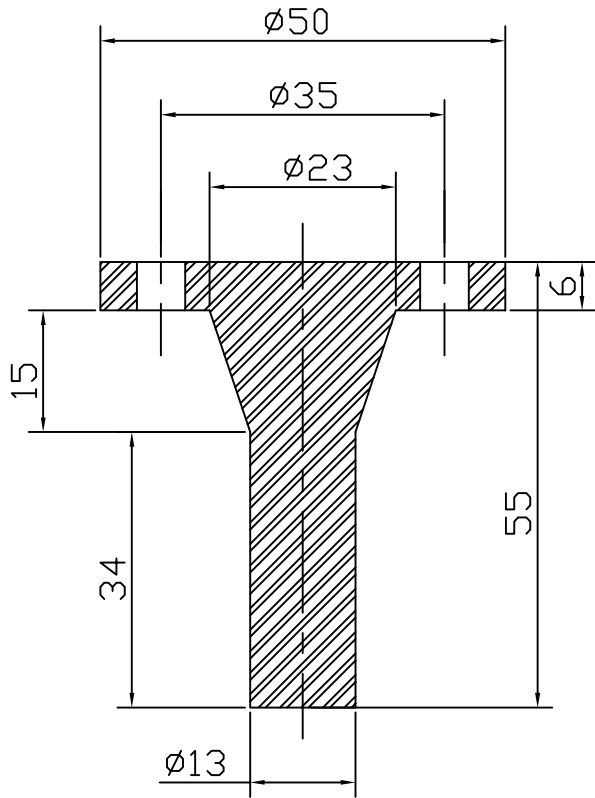
E-05 Blade and Disc Health Monitor Software

- This software should take data from the Blade Vibration Monitoring System to arrive at Health indices for blades and the disc. It should help in detecting the occurrence and propagation of crack in the blade and disc.

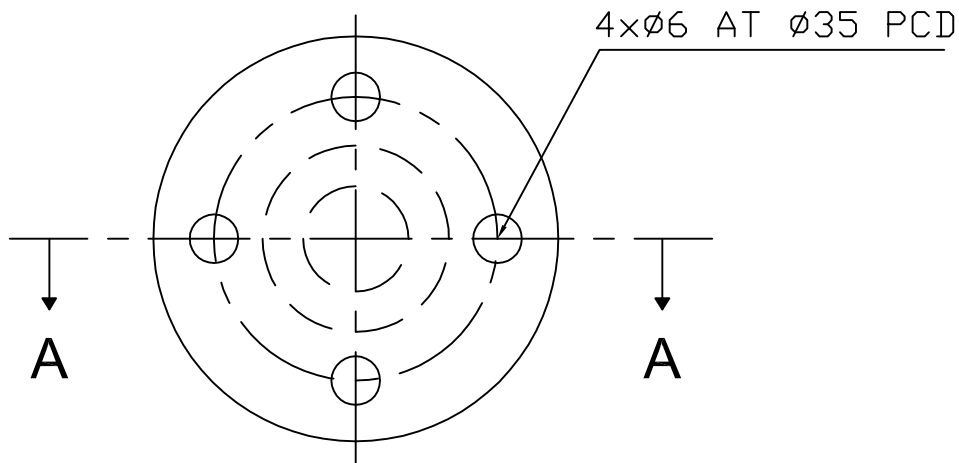
GENERAL REQUIREMENTS:

1. The supplier should quote previous experience of installation of such a system on a large steam turbine of rating higher than 200 MW, with support documents of a Technical report.
2. If BHEL requires installation and demonstration of the above mentioned Blade Vibration Monitoring System Components at BHEL suggested site, which will be under a separate purchase order outside the scope of the present purchase order, the supplier should be able to do it as and when asked for.

ALL DIMENSIONS ARE TENTATIVE ONLY. SUBJECT TO CHANGES



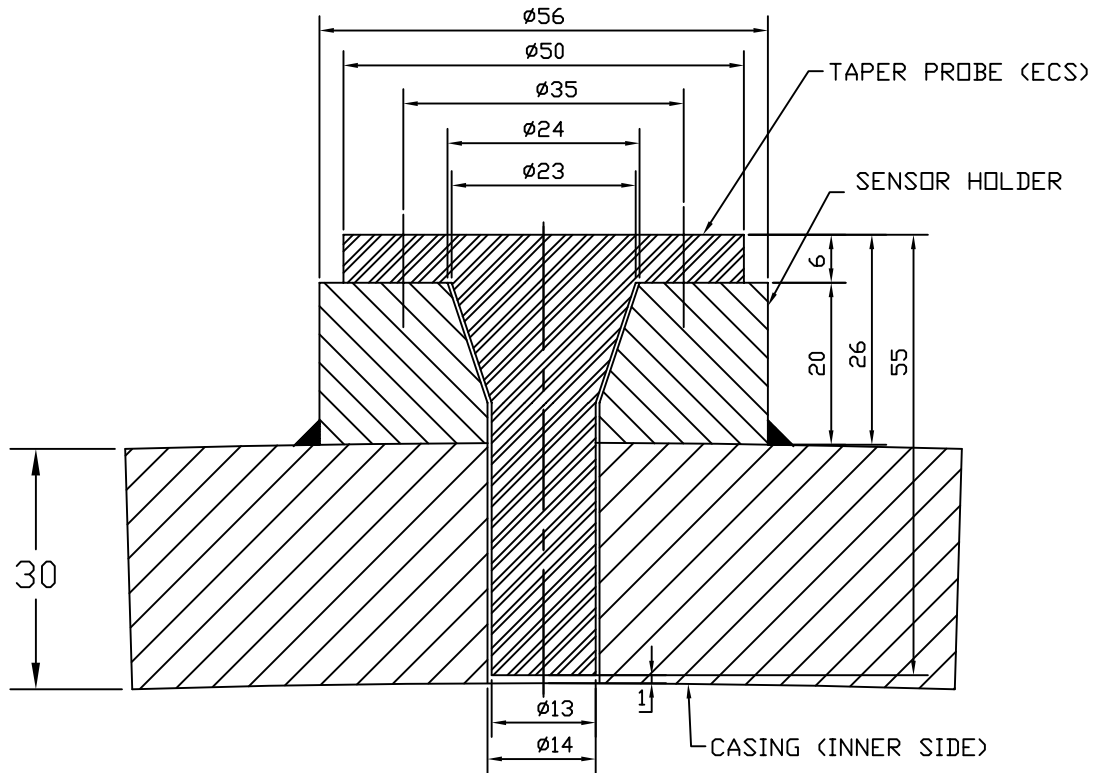
Section AA



EDDY CURRENT PROBE(ECS)

Drg. No.1

ALL DIMENSIONS ARE TENTATIVE ONLY. SUBJECT TO CHANGES



PROBE FIXING ARRANGEMENT

Drg. No.2



RD:MPX:F-20

General Terms and Conditions of Enquiry & Contract for the Purchase of Goods/ Services

1. The quotation and any order resulting from this enquiry shall be governed by these General Terms and Conditions of enquiry and contract for the supply of goods and the supplier quoting against this enquiry shall, unless specifically stipulates any different terms or conditions, be deemed to have read and agreed to the same.
2. Sealed quotations in double cover with tenderer's distinctive seal, superscribing enquiry number, date and due date are to be submitted so as to reach on or before due date & time, addressed to **Additional General Manager(MM) and Head, Bharat Heavy Electricals Limited, Corporate Research & Development Division, Vikasnagar, Hyderabad, Andhra Pradesh, India – PIN-500 093, India.**
In the case of **Two-part bid**, each inner cover shall clearly be labeled as a) **Technical & Commercial Bid** containing technical data/ drawings/ catalogues/ quality plans along with commercial terms and conditions & copy of the price bid with the price columns left blank (unpriced price bid), b) **Price bid** containing prices quotes. Installation and/or Commissioning charges shall be spelt out in absolutely lucid terms, taking into account total charges, rather than quoting vaguely, such as charges per man-day or charges per engineer per day etc. **If the price bid was found later to be different from the unpriced price bid in any way, the offer will be rejected summarily.**
3. **Tender/ Technical bid Opening:** Unless specified otherwise, tenders/ technical bids will be opened on appointed date and time as mentioned in the enquiry or as communicated changed date/time, if any, in the presence of such of those tenderers who may be present.
4. **Delayed/ Late Tender:** Tenders, which have been posted by registered post through the postal department in time before opening date but received after tender opening, shall be treated as regular tenders. Other tenders received after tender opening time shall be treated as late tenders and normally they may be rejected.
5. The Quotation should be free from overwriting and erasures. Corrections and additions, if any, must be attested. Supplier should indicate in the quotation dimensions (Size), weight, rate etc., in the metric system unless the enquiry calls for different unit.
6. **Validity of Quotation:** All quotations shall be kept open for acceptance for a period of ninety days from the date of opening of Tenders/ Technical bid and this shall be deemed to be an express condition of all quotations. The rate shall be quoted in both figures and in words.
7. In the case of Two-part bid, the vendor should furnish technical clarifications, if any, within stipulated time mentioned, failing which, it will be construed that the vendor is not interested in the tender and BHEL shall not consider the offer for further evaluation.
8. **Revision of Pricebid:** In the event of any bidder, after finalizing the technical specifications and scope of supply, opting to revise and submit their latest price bid, then BHEL reserves the right to open their original / previous price bid also while evaluating revised bid.
9. **Pricebid Opening:** Unless specified otherwise in the enquiry, the Price bids of technically qualified vendors shall be opened with prior intimation in the presence of such of those tenderers who may be present.
10. **Conformity to Specifications:** The material should be of the best quality and shall be conforming to our specification given in our enquiry. Unless otherwise agreed upon by BHEL, no payment shall be due by BHEL in respect of any sample. Offers without details of specifications/ applicable catalogues will not be considered and are liable to be rejected.
11. **Terms of Delivery:** All suppliers shall quote the lowest prices on ex-works and FOB/FCA basis. Foreign suppliers will also indicate their Indian agent's name and address with percentage of agency commission out of the quoted price, if any. Name and Address of the supplier's Bankers address should also be given. Indian suppliers for the indigenously manufactured/ imported stock shall quote on Ex-works /Free-on-Rail/Road /FOR-destination basis, indicating packing & forwarding charges, if any, separately.
12. **Taxes and Duties:** Unless specified otherwise in the enquiry, BHEL do not provide "C" or "D" Form as it is engaged in R&D. All Indian suppliers shall clearly mention current Sales Tax/ VAT, Excise Duty, and Service Tax etc, if any, payable in addition to the quoted price and indicate applicable rates/ percentage, item-wise clearly. It will be paid only if Registration Number under State(TIN)/ Central Sales Tax or Service Tax is specifically mentioned in the Bill/Invoice. Vendors without a Sales Tax/VAT registration and applicable Service Tax registration will not be considered.
13. **Insurance:** Insurance will be arranged by BHEL in case of Ex-Works as well as FOB basis supplies.
14. **Terms of Payment:** Full payment will be made within 30 days after receipt, inspection and acceptance of the material (and where involved, Erection and commissioning of the material/ equipment at BHEL/Destination) through Electronic Fund transfer (RTGS/NEFT/SEFT) with bank charges to the supplier's account. For foreign suppliers, the preferred payment term will be on Sight Draft basis and bank charges inside India will be to BHEL account and outside India will be to supplier's account.
15. Suppliers shall quote competitive price and best delivery for all the items mentioned in the enquiry. BHEL reserves the right to reject partial quotations and to place order on overall landed cost basis. Correct date of effecting supplies in the event of an order should be indicated in the offer. If the supplier's quoted terms are different from BHEL standard payment terms (Refer #14 above), interest @11% per annum (or as indicated in the enquiry) will be loaded to the quoted prices for difference of payment period.
16. **Packing:** The supplier shall be responsible for the goods being properly and adequately packed so as to prevent any loss, damage or deterioration during transit and indicate packing charges, if any, separately.
17. **Part/ Split Ordering:** BHEL reserves right to Order part of the item/ quantity of the enquiry and split the order among qualified vendors.
18. In case the goods enquired are on Rate Contract basis with any other unit of BHEL, such fact should be clearly indicated in the quotation giving full particulars of Rate Contract number, validity and price and also your willingness to comply with order if placed against such Rate Contract. A true copy of Rate contract signed by the supplier should be sent with the quotation.
19. **Inspection:** On receipt, the goods shall be subjected to inspection and also test, if necessary, and our decision regarding the acceptability of the goods shall be final and binding on the suppliers.
20. **Penalty for late delivery:** The time stipulated for delivery of goods shall be deemed to be the essence of the contract and delivery must be completed within the stipulated date/s. In the event of supplier's failure to supply the goods by the stipulated date/s, a penalty of ½% per week for the delayed no of weeks or part thereof for the undelivered portion of PO subject to a maximum of 10% of total order value shall be levied at the discretion of BHEL.
21. **Withdrawal from the Contract:** In case the supplier withdraws the quotation after its acceptance by BHEL or fails to supply the goods as per the terms and conditions of contract, or at any time repudiated the contract wholly or in part, BHEL shall be at liberty to cancel the Purchase Order and to recover from the supplier the extra cost and other loss, incidentals due to the breach of contract on the part of the supplier through risk purchase.
22. **Guarantee/ Warranty certificate and Manufacturer's Test report:** Invariably in all cases where it is so stipulated, the supplier should furnish Guarantee/ Warranty certificate valid for a period of 18 months from date of supply or 1 year from the date of receipt, acceptance and commissioning(or more, if provide by oem) whichever earlier and manufacturer's Test report along with the goods, failing which, BHEL shall have the right to reject the goods.
23. All ferrous/ non-ferrous items shall be colour coded as per bureau of Indian standards/ or IS standards/ BHEL Standards.
24. **Recovery of Dues:** BHEL shall recover any amount due from the supplier or any amount outstanding to the credit of the supplier with BHEL R&D unit or any other BHEL unit(s) and/or by legal action.
25. **Arbitration & Forum for Legal Proceedings:** All disputes arising in connection with indigenously/ foreign supplies shall be settled through arbitration held at Hyderabad, AP, India and arbitration shall be appointed by Arbitration Tribunal of the Federation of Andhra Pradesh Chambers of Commerce and Industry, Hyderabad, AP, India. The Courts at Secunderabad/ Hyderabad, AP, India shall have jurisdiction in respect of any suit or other legal proceeding arising from or relating to this contract

The rights and remedies of BHEL stated in these General terms and conditions shall be in addition and supplemental to its rights and remedies under law and custom or usage of trade or business and shall in no way be deemed to limit, curtail, supercede or derogate from its said rights and remedies.



RD:MPX:F-18

BHARAT HEAVY ELECTRICALS LIMITED
CORPORATE R&D Division
Vikasnagar, Hyderabad, Andhra Pradesh, India – 500093.,

IMPORTED

Suppliers' compliance statement to basic conditions of enquiry (to be submitted along with Technical & Commercial bid)
Enquiry number: **Enquiry dt:**

(In case Order to be placed on the Principal and foreign currency)

Condition	BHEL R& D's terms	Supplier's compliance (indicate Yes/No. if 'No', state terms desired)
1. Validity of offer	90 days from the tender opening date (or as per enquiry)	
2. Delivery requirements	FCA – Nearest International Airport (or as indicated in the enquiry)	
3. Warranty	Unless specifically mentioned in the enquiry, all supplied items to be provided with warrantee for one year (or more, if provided by the OEM) from the date of acceptance/ commissioning. In case of equipment involving erection and commissioning, warrantee shall be for 18 months from the date of dispatch or 12 months from the date of commissioning, whichever is earlier	
4. Terms of payment	Sight draft. All bank charges inside India will be to BHEL R&D account and outside India will be to the supplier's account. Documents through State Bank of India, Trade Finance Central processing Cell (TFCPC), Opp. Anand Theatre, Secunderabad, Andhra Pradesh, India-500003. SWIFT Code: SBININBB602, Phone: 91-40-27816795, FAX: 91-40-27720459	
5. Agency commission	Pl specify Indian agency commission charges, if any, in percentage of quotation. The same shall be paid to the agency in Indian Currency only.	
6. Erection/ Commission	As per enquiry	
7. Documentation	As per enquiry	
8. Insurance	BHEL will arrange Insurance based on intimation to our Insurance agency. Address of the agency will be mentioned in the Purchase Order.	
9. Penalty for late delivery	0.5% per week beyond the delivery date on undelivered portion subject to a maximum of 10% of the total order value.	

* BHEL R&D reserves the right to reject any offer due to non-compliance with the above conditions and/or non-receipt of this form in duly filled condition

* Any other elements of cost in addition to the above may please be specified in detail

(Signature and Stamp/ Seal of Vendor)



RD:DP:MPX:F-14

BHARAT HEAVY ELECTRICALS LTD.
Corp. R&D DIVISION
VIKAS NAGAR,
HYDERABAD- 500 093 (INDIA)

SUPPLIER REGISTRATION FORM

(FOREIGN SUPPLIER)

ALL COLUMNS SHOULD BE PROPERLY FILLED IN THE SPACE PROVIDED FOR. WHEREVER IT IS NOT APPLICABLE PLEASE WRITE "NOT APPLICABLE". INCOMPLETE OR INCORRECT FORMS MAY NOT BE CONSIDERED.

1.0 GENERAL INFORMATION:

1.1NAME OF COMPANY

1.2DETAILS OF HEAD OFFICE:

ADDRESS :
TELEPHONE :
FAX :
.EMAIL :
.WEB SITE :

1.3DETAILS OF FACTORY/WORKS:

ADDRESS :
TELEPHONE :
FAX :
.EMAIL :
.WEB SITE :

1.4DETAILS OF MARKETING AGENT

ADDRESS :
TELEPHONE :
.FAX :
.EMAIL :
.WEB SITE :

1.5 CHIEF EXECUTIVE

1.6 CONTACT PERSON(S)
FOR PRODUCT OFFERED
NAME(S)
OFFICIAL CPACITY
ADDRESS:
TELEPHONE
FAX
E-MAIL

1.7 YEAR OF ESTABLISHMENT

1.8 PRODUCTION CAPACITY PER ANNUM

1.9 PARTICULARS OF PRODUCT INCLUDING
SPECIFICATION AND RANGE OFFERED
FOR REGISTRTION
(ATTACH BROUCHERS AND CATALOGUE)

1.10 NAME(S) OF BANKERS

1.11 BANKER'S CERTIFICATE

1.12 PORT OF LOADING

1.13 NEAREST AIRPORT

1.14 NAME OF THE INDIAN AGENT, IF ANY
WITH AUTHORISATION LETTER

2.0 FINANCIAL INFORMATION

2.1 ...TOTAL CAPACITY

2.2 ...ANNUAL TURN OVER FOR LAST 3 YEARS

2.3 ...WHEHER CREDIT LICENSE ACCEPTABLE YES/NO

3.0 QUALITY MANAGEMENT SYSTEMS ENCLOSED FORMAT PART-B

3.1 EXPERIENCE LIST FOR SAME/SIMILAR ITEMS
TO BE ENCLOSED

4.0FUTURE EXPANSION PLANS: (GIVE DETAILS)

5.0 LIST OF ENCLOSURES: INCLUDING BROUCHERS, CATALOGUES, TECHNICAL LITERATURE ETC.

6.0 ANY OTHER INFORMATION

SIGNATURE OF SUPPIER (AUTHORIZED SIGNATORY)

NAME

DESIGNATION

DATE

.....OFFICIAL SEAL

Note: Please attach separate sheets, if space found is inadequate



BHARAT HEAVY ELECTRICALS LTD.

Corp. R&D DIVISION

VIKAS NAGAR,

HYDERABAD- 500 093 (INDIA)

Ph: 040 – 23778474, Fax: 040 – 23770698, email: mpx@bhelrnd.co.in

RD:DP:MPX:F-13

VENDOR REGISTRATION FORM

(Indigenous supplier)

[FORM TO BE SUBMITTED* BY THE BIDDER ALONG WITH TECHNICAL-BID]

Before filling, please refer to instructions on page-4

1.0 VENDOR PROFILE:

1.1 Name and address of the vendor:

Phone Nos.:

Fax No.:

Email: 1. _____ 2. _____

**1.2 Local representative name & address in Hyderabad/
Secunderabad:**

Phone Nos.:

Fax No.:

Email:

Contact person:

Mobile No.:

2.0. TYPE OF ORGANIZATION:

PROPRIETORSHIP	COMPANY	SISTER CONCERN (mention vendor registration number of main organization)	
PARTNERSHIP	CORPORATION	Small Scale Industry	ANY OTHER (Please specify)

In case of SSI unit, copy of registration to be enclosed.

3.0 ANNUAL TURN OVER:

#	Year	Turn-Over
1	Current Year(budgeted)	
2	Previous year (200 - 0)	
3	Prior Year (200 - 0)	

4.0 NAME AND ADDRESS OF THE BANKER:

1. Bank Name
2. Branch name
3. Account number
4. Account Type
5. MICR Code:
6. IFSC Code(RTGS/NEFT):
7. Bank Phone number(s),

Blank cheque, duly cancelled, to be enclosed.

Please note that all payments shall be made through Electronic clearance services to your above account against the orders executed, if any.

5.0 REGISTRATION PARTICULARS (relevant copies to be enclosed)

- 5.1 IT Permanent Account No.(PAN):
- 5.2 State sales tax/VAT Registration No.:
- 5.3 Central Sales Tax Registration No.
- 5.4 ED Registration No.
- 5.5 Service Tax Registration No.:
- 5.6 PF Account No.:
- 5.7 Labour Licence No.:
- 5.8 ESI Account No.:

6.0 CONTACT PERSON: S/Sri

Designation:::

Phone/ Mobile No. :

7.0 TOTAL NUMBER OF EMPLOYEES:

Graduates (Engr./Scientists/ Mgmt/Fin.)	Consultants	Workers		
		Sup./Skilled	Semiskilled	Unskilled

8.0 WISH TO REGISTER FOR SUPPLIES/SERVICES:

#	Service/Supplies	Capacity
1		
2		
3		
4		
5		
6		
7		

9.0 REFERENCE LIST :

(Only recognized public and private sector companies, attach if printed copy available)

#	Customer	Volume / Year
1		
2		
3		
4		
5		
6		
7		

10.0 INFRASTRUCTURE / FACILITIES:

#	Facility (with specifications)	Age/ Year procured
1		
2		
3		
4		
5		
6		
7		
8		
9		
10		

11.0 REGISTRATION WITH OTHER BHEL UNIT/UNITS:

#	Unit	Registration No.	Year
1			
2			
3			
4			

12.0 ANY OTHER INFORMATION :

DECLARATION:

The information furnished above is true and authentic.

(CEO / PROPRIETOR)

SEAL:

DATE:

The competent authority reserves the right to accept or reject the registration. Registered vendors will be informed by mail / email, as convenient. Contact AGM (MM) for clarification/ additional information on registration.

A separate communication will be sent to you in case of non-registration, citing reasons thereof.

Instructions

1. Answer all items; use NA for items not applicable.
2. BHEL units do not require this registration.
3. Use additional sheets for want of space if required.
4. Attach copies of latest documents in respect of items 5.0 (Registration no.s)
5. Photographs of registered office and the chief executive/proprietor shall be furnished.
6. Use A4 sheets for this document and the enclosures.

* REGISTERED BIDDERS, HAVING BHEL (R&D) REGISTRATION NO. OR HAVE SUBMITTED THIS FORMAT FOR REGISTRATION, NEED NOT FURNISH THIS INFORMATION AGAIN