



Bharat Heavy Electricals Limited

(High Pressure Boiler Plant)

Tiruchirappalli – 620014, TAMIL NADU, INDIA

CAPITAL EQUIPMENT / MATERIALS MANAGEMENT

An ISO 9001
Company

ENQUIRY

Phone: +91 431 257 70 49
Fax : +91 431 252 07 19
Email : csguna@bheltry.co.in
Web : www.bhel.com

Enquiry Number:	Enquiry Date:	Due date for submission of quotation:
2620800140	12.12.2008	05.01.2009

You are requested to quote the Enquiry number date and due date in all your correspondences. This is only a request for quotation and not an order

Item	Description	Quantity	Delivery (Item required at BHEL on)
10	Globe Valve – ¾” as per the technical specification & commercial conditions applicable (to be downloaded from web site www.bhel.com or http://tenders.gov.in)	250 Nos.	31.01.2009
20	“Y” Type Strainer – ¾” as per the technical specification & commercial conditions applicable (to be downloaded from web site www.bhel.com or http://tenders.gov.in)	250 Nos.	31.01.2009
30	Gun Metal Tapping Valve with Single Take provision as per the technical specification & commercial conditions applicable (to be downloaded from web site www.bhel.com or http://tenders.gov.in)	100 Nos.	31.01.2009
40	Gun Metal Tapping Valve with Double Take provision as per the technical specification & commercial conditions applicable (to be downloaded from web site www.bhel.com or http://tenders.gov.in)	150 Nos.	31.01.2009

Note: Please note and confirm the following in the offer:

1. Item SI.Nos 10 to 40 are to be used as a Single Assembly. Offer shall be evaluated all the items as a Single Package. Hence, all items should be quoted without fail any, otherwise your offer will not considered.
2. In all the items (Item SI. Nos.: 10 to 40) one number should be submitted as sample for approval before effecting bulk supply
3. Pressure test certificate should be submitted along with supply.
4. Warranty / Guarantee should be ensured by the vendor.
5. Technical data sheet should be submitted along with offer for Items 10 to 40



Bharat Heavy Electricals Limited

(High Pressure Boiler Plant)

Tiruchirappalli – 620014, TAMIL NADU, INDIA

CAPITAL EQUIPMENT / MATERIALS MANAGEMENT

An ISO 9001
Company

Item	Description	Quantity	Delivery (Item required at BHEL on)
<p>otherwise the offer shall be rejected</p> <p>BHEL commercial terms & conditions with Price Bid and Bank Guarantee formats along with technical specifications can be downloaded from BHEL web site http://www.bhel.com or from the Government tender website http://tenders.gov.in (public sector units > Bharat Heavy Electricals Limited page) under Enquiry reference “26208000140”.</p>			
<p>Tenders should reach us before 14:00 hours on the due date Tenders will be opened at 14:30 hours on the due date Tenders would be opened in presence of the tenderers who have submitted their offers and who may like to be present</p>		<p>Yours faithfully, For BHARAT HEAVY ELECTRICALS LIMITED</p> <p>Sr.Manager / Capital Equipment / MM</p>	

Tender Sl.No.10: 3/4" (20MM NB) GUN METAL GLOBE VALVE

GLOBE VALVE – SIZE = 3/4 INCH (20MM NB)

THE ENDS ARE TO BE FLANGED ENDS. SUITABLE DRILL HOLES (MIN.4 DRILL HOLES) MUST BE PROVIDED FOR EASY FASTENING.

THE DESIGN STANDARD OF THESE VALVES SHOULD CONFORM TO CLASS 300 ANSI B 16.5 RF

WORKING MEDIUM = OXYGEN

WORKING PRESSURE = 15 KG/SQCM

MATERIAL: BODY OF THE VALVE SHOULD BE GUN METAL AND THE INNER WORKING PARTS SHOULD BE OF STAINLESS STEEL

ONLY REPUTED MAKE GLOBE VALVES WILL BE ACCEPTED NAMELY

1. M/S.LEADER VALVES,
2. M/S.DEWRANCE & MACKNEIL
3. M/S.ADVANCE SYSTEMS CONTROLS
4. MACNEIL & BERRY
5. BESTOBELL "VICTOR" GLOBE VALVES.

QTY: 250 NOS.

Tender Sl.No.20: ¾ INCH (20MM NB) GUN METAL 'Y' TYPE STRAINER

Y" TYPE STRAINER – SIZE = ¾ INCH (20 MM NB)

THIS "Y" TYPE STRAINER IS TO BE USED FOR OXYGEN GAS SERVICE.
HENCE THE BODY OF THE STRAINER SHOULD BE MADE OF GUN METAL AND
INNER WORKING PARTS SHOULD BE MADE OF STAINLESS STEEL.

WORKING MEDIUM = OXYGEN

WORKING PRESSURE = 15KG/SQCM

MATERIAL = BODY SHALL BE GUN METAL AND OTHER INNER WORKING PARTS ARE TO
BE STAINLESS STEEL

QTY: 250 NOS.

Tender Sl.No.30: SINGLE TAKE OXYGEN TAPPING VALVE

THIS OXYGEN TAPPING VALVE IS TO BE USED FOR OXYGEN GAS TAPPING BY THE END USER THROUGH A SINGLE POINT.

THE VALVE COMPONENTS SHOULD BE IN CONFORMANCE TO THE BHEL'S REFERENCE DRAWINGS GIVEN AS DETAILED BELOW:

- 1.4 M 20B 0528115 STEM
 - 2.4 M 20B 0528114 HEX. NUT.
 - 3.4 M 20B 0528113 SINGLE TAKE VALVE.
 - 4.4 M 20B 0528116 WASHER.
 - 5.4 M 20B 0528117 SINGLE TAKE CONNECTING FLANGE.
- MATERIAL SHALL BE AS PER DRAWING FOR ALL COMPONENTS
WORKING MEDIUM = OXYGEN
WORKING PRESSURE = 15KG/SQCM

SUPPLIER SHOULD SUBMIT ASSY DRAWING OF THE ABOVE VALVE ALONG WITH OFFER FOR TECHNICAL EVALUATION. OTHERWISE THE OFFER SHALL BE REJECTED.

SAMPLE PIECE 1 NO.IS TO BE SUPPLIED FOR INSPECTION AND APPROVAL BEFORE EFFECTING BULK SUPPLY.

QTY: 100 NOS

GUN METAL TAPPING VALVE WITH SINGLE TAKE PROVISION
THIS GUN METAL TAPPING WILL BE IN CONFORMATION TO OUR DRAWING. IF REQUIRED SAMPLE PIECE WILL BE SUPPLIED.

Tender Sl.No.40: DOUBLE TAKE OXYGEN TAPPING VALVE AS PER DRAWING

THIS VALVE IS TO TAP THE OXYGEN FOR THE END USER IN TWO POINTS FROM THE SAME VALVE.

THE VALVE COMPONENTS SHOULD BE IN CONFORMANCE TO THE BHEL'S REFERENCE DRAWINGS GIVEN AS DETAILED BELOW:

1. 4 M 20B 0528115 STEM.
2. 4 M 20B 0528114 HEX.NUT
3. 4 M 20B 0528118 DOUBLE TAKE CONNECTING FLANGE.
4. 4 M 20B 0528113 SINGLE TAKE VALVES 2 NOS ie.ONE NO. ON EACH SIDE TO BE PROVIDED TO USE AS DOUBLE TAKE VALVES
5. 4 M 20B 0528116 WASHER.
6. MATERIAL OF THE PARTS ABOVE ARE TO BE AS PER DRAWING
7. WORKING MEDIUM = OXYGEN
8. WORKING PRESSURE = 15 KG/SQCM

SUPPLIER SHOULD SUBMIT ASSY DRAWING OF THE ABOVE VALVE ALONG WITH OFFER FOR TECHNICAL EVALUATION.OTHERWISE THE OFFER SHALL BE REJECTED.

SAMPLE PIECE 1 NO.IS TO BE SUPPLIED FOR INSPECTION AND APPROVAL BEFORE EFFECTING BULK SUPPLY.

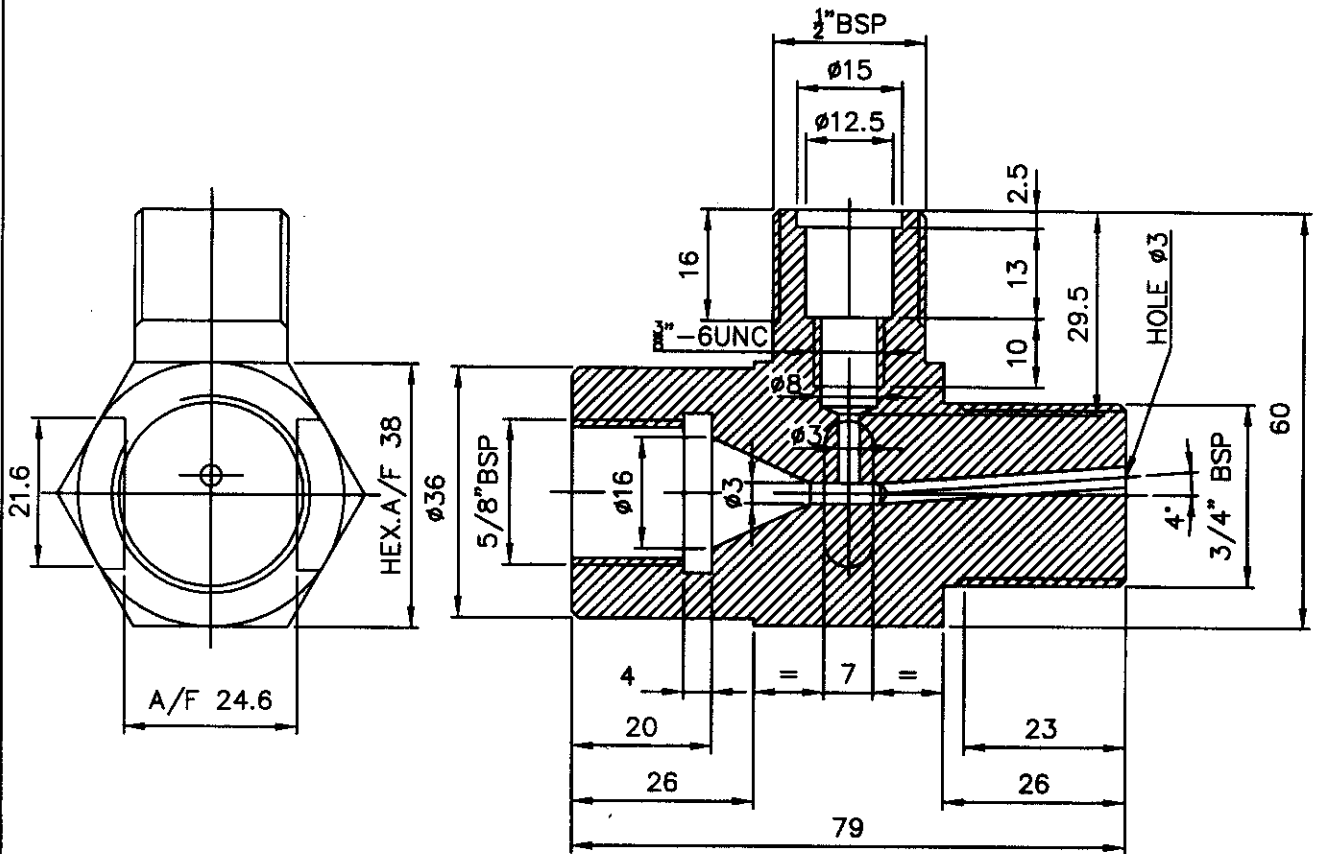
QTY: 150 NOS.

GUN METAL TAPPING VALVE WITH DOUBLE TAKE PROVISION THIS GUN METAL TAPPING SHALL BE AS PER OUR DRAWING. IF REQUIRED SAMPLE PIECE WILL BE SUPPLIED.

ALL DIMENSIONS ARE IN MM

3.2

CAUTION: THIS DRAWING IS OUR SOLE PROPERTY AND SHOULD NOT BE USED IN ANY FORM OR FOR ANY PURPOSE WITHOUT THE WRITTEN PERMISSION OF BHARAT HEAVY ELECTRICALS TRICHIRAPPALLI - 682 014.



NOTE: -

CORNERS TO BE CHAMFERED FOR 1/45°

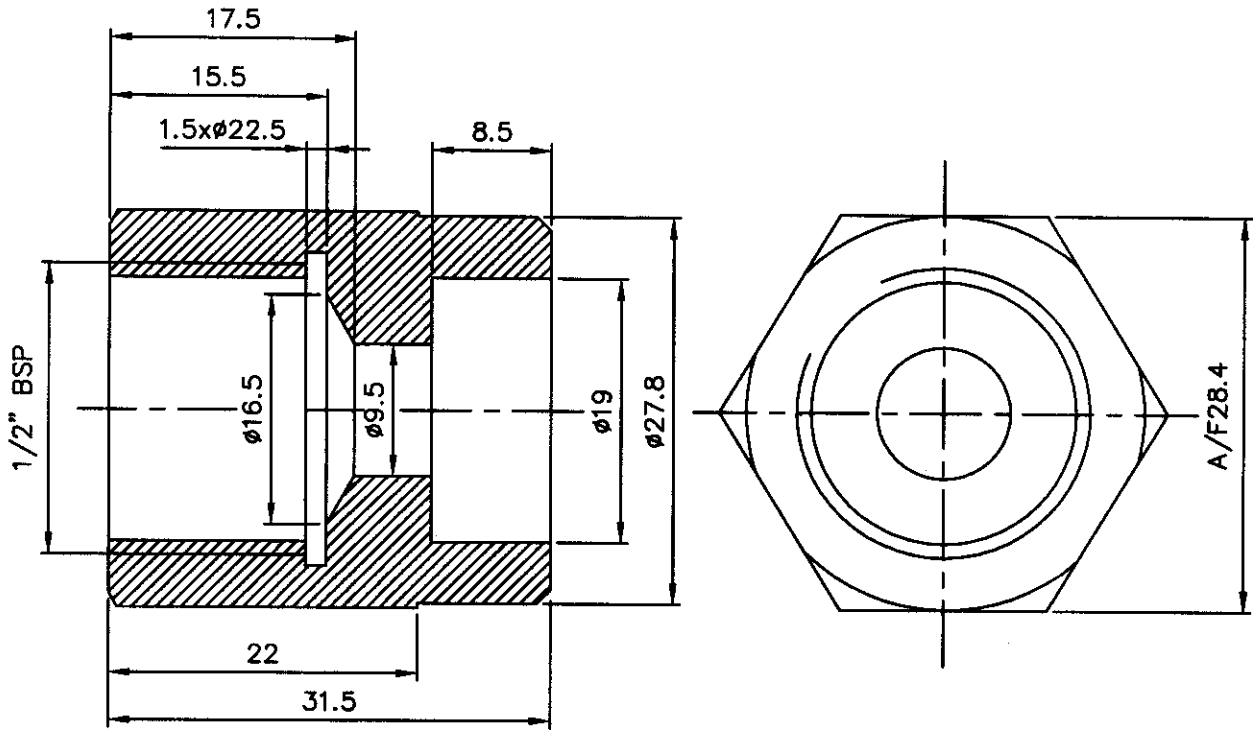
No. of Pieces		DESCRIPTION	MATERIAL	GRADE AB1	IS: 305	NET.WT.IN KGS.	0.5	DRAWING No.	ITEM No.
REFERENCE:		ALTERATIONS:		DCN REF	DATE	SIGN.	INDEX		
SCALE	DRAWN	R. Narayanan							
1:1	CHECKED								
	APPROVED								
	DATE	15.12.07							
MACHINE: OXYGEN PLANT				TYPE: 4511:05					
TITLE: SINGLE TAKE VALVE (OXYGEN PIPE LINE)				DRAWING No:				REV.	
				4M20B0528113					
				Sheet No:				No. of Sheets:	

ALL DIMENSIONS ARE IN MM

3.2

THIS DRAWING IS OUR SOLE PROPERTY AND SHOULD NOT BE USED IN ANY FORM OR FOR ANY PURPOSE WITHOUT THE WRITTEN PERMISSION OF BHARAT HEAVY ELECTRICALS LIMITED, TRICHIRAPPALLI - 620 014.

CAUTION:



NOTE: -

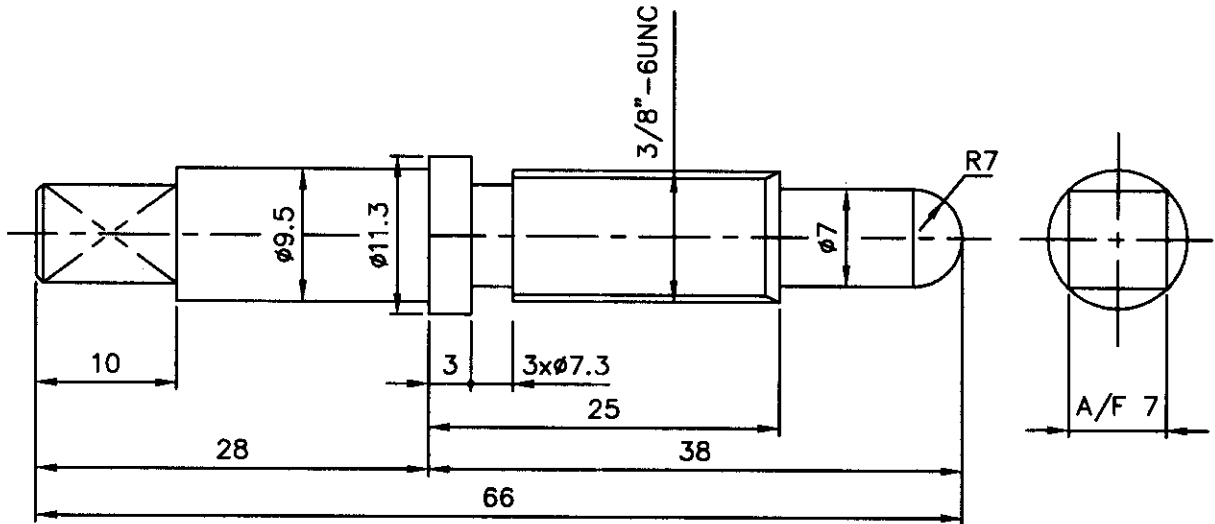
CORNERS TO BE CHAMFERED FOR 1/45°

		GRADE AB1	IS: 305	0.025		
No. of Pieces	DESCRIPTION	MATERIAL	STANDARD	NET.WT.IN KGS.	DRAWING No.	ITEM No.
	REFERENCE:	ALTERATIONS:		DCN REF	DATE	SIGN.
SCALE	DRAWN	R. Narayanan				
2:1	CHECKED					
	APPROVED					
	DATE	15.12.07				
MACHINE: OXYGEN PLANT			TYPE: 4511:05			
TITLE:			DRAWING No:			REV.
			HEX. NUT 1/2" BSP (OXYGEN PIPE LINE)			4M20B0528114
			Sheet No:			No. of Sheets:

ALL DIMENSIONS ARE IN MM

3.2

CAUTION: THIS DRAWING IS OUR SOLE PROPERTY AND SHOULD NOT BE USED IN ANY FORM OR FOR ANY PURPOSE WITHOUT THE WRITTEN PERMISSION OF BHARAT HEAVY ELECTRICALS, TRICHIRAPPALLI - 620 014.



NOTE: -

CORNERS TO BE CHAMFERED FOR 1/45°

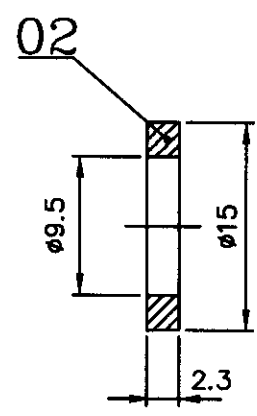
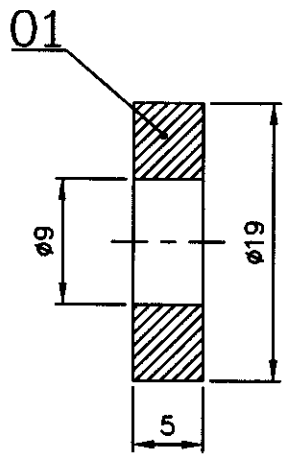
X		Ø11.3x66L	STAINLESS STEEL	AISI450 SS	0.01		
No. of Pieces	DESCRIPTION		MATERIAL	STANDARD	NET.WT.IN KGS.	DRAWING No.	
	REFERENCE:		ALTERATIONS:		DCN REF	DATE	SIGN.
SCALE	DRAWN	<i>R. Narayanan</i>					
2:1	CHECKED						
	APPROVED						
	DATE	15.12.07					
MACHINE: OXYGEN PLANT			TYPE: 4511:05				
	TITLE: STEM 3/8"-6UNCx66L (OXYGEN PIPE LINE)			DRAWING No:		REV.	
				4M20B0528115			
				Sheet No		No. of Sheets	



ALL DIMENSIONS ARE IN MM

THIS DRAWING IS OUR SOLE PROPERTY AND SHOULD NOT BE USED IN ANY FORM OR FOR ANY PURPOSE WITHOUT THE WRITTEN PERMISSION OF BHARAT HEAVY ELECTRICALS TRICHIRAPPALLI - 620 014.

CAUTION:



	WASHER 3/8"-6UNCxOD15x2.3t	GRADE AB1	IS: 305			02
	WASHER ID9xOD20x5t	TEFLON				01
X						

No. of Pieces	DESCRIPTION	MATERIAL	STANDARD	NET.WT.IN KGS.	DRAWING No.	ITEM No.
	REFERENCE:		ALTERATIONS:	DCN REF	DATE	SIGN.
SCALE	DRAWN	<i>R. Narayanan</i>				
2:1	CHECKED	<i>[Signature]</i>				
	APPROVED	<i>[Signature]</i>				
	DATE	15.12.07				



MACHINE: OXYGEN PLANT	TYPE: 4511: 05
TITLE: WASHER (Ø9x20x5t & Ø9.5xØ15x2.3t) (OXYGEN PIPE LINE)	DRAWING No: 4M20B0528116
	REV.
Sheet No:	No. of Sheets:

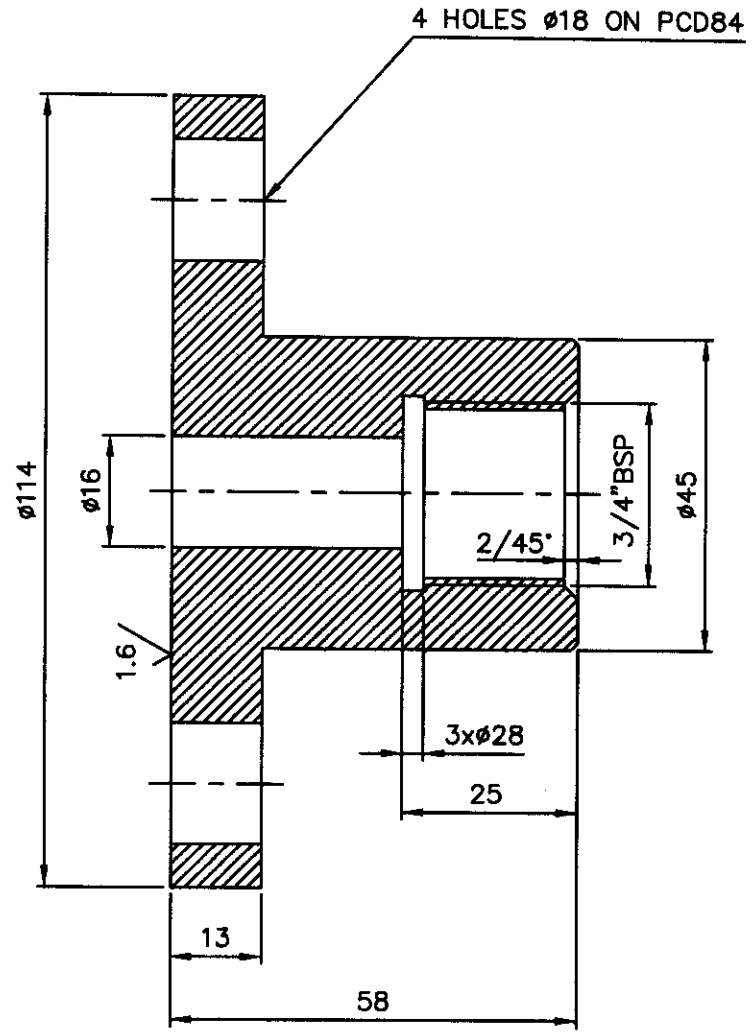


ALL DIMENSIONS ARE IN MM

3.2 // 1.6

CAUTION: THIS DRAWING IS OUR SOLE PROPERTY AND SHOULD NOT BE USED IN ANY FORM OR FOR ANY PURPOSE WITHOUT THE WRITTEN PERMISSION OF BHARAT HEAVY ELECTRICALS LIMITED, TRICHIRAPPALLI - 620 014.

CAUTION:



NOTE: -
CORNERS TO BE CHAMFERED FOR 1/45°

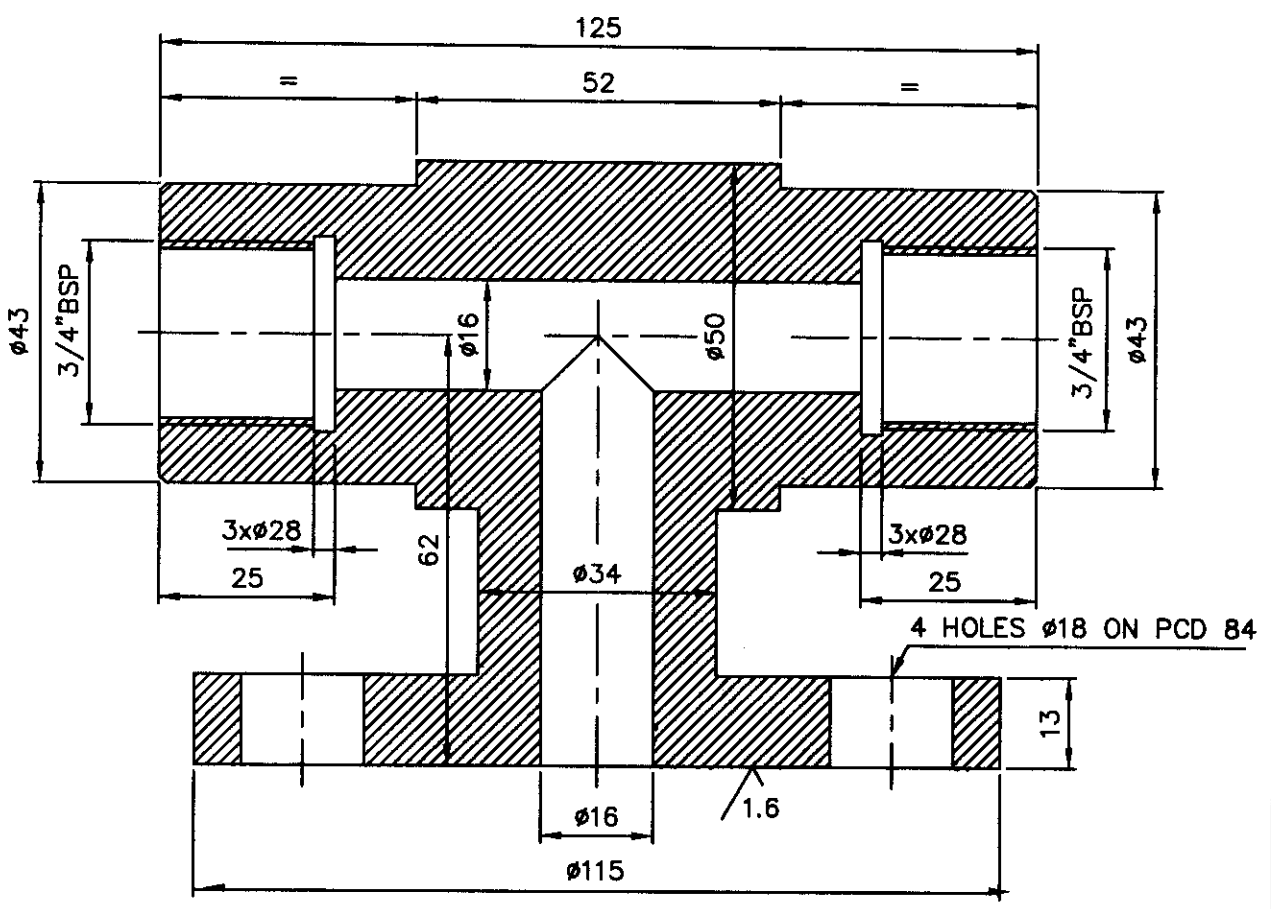
No. of Pieces		DESCRIPTION	MATERIAL	GRADE AB1	IS: 305	NET.WT.IN KGS.	1.25	DRAWING No.	ITEM No.
REFERENCE:		ALTERATIONS:		DCN REF	DATE	SIGN.	INDEX		
SCALE 1:1	DRAWN	R. Narayanan							
	CHECKED								
	APPROVED								
	DATE	15.12.07							
MACHINE: OXYGEN PLANT				TYPE: 4511:05					
TITLE: SINGLE TAKE CONNECTING FLANGE (OXYGEN PIPE LINE)				DRAWING No: 4M20B0528117				REV.	
				Sheet No:		No. of Sheets:			

THIS DRAWING IS OUR SOLE PROPERTY AND SHOULD NOT BE USED IN ANY FORM OR FOR ANY PURPOSE WITHOUT THE WRITTEN PERMISSION OF BHARAT HEAVY ELECTRICALS LIMITED, TRICHIRAPPALLI - 620 014.

CAUTION:

ALL DIMENSIONS ARE IN MM

3.2//1.6



NOTE: -
CORNERS TO BE CHAMFERED FOR 1/45°

GRADE AB1		IS: 305	2.25			
No. of Pieces	DESCRIPTION	MATERIAL	STANDARD	NET.WT. IN KGS.	DRAWING No.	ITEM No.
REFERENCE:		ALTERATIONS:		DCN REF	DATE	SIGN.
SCALE	DRAWN	<i>R. Narayanan</i>				
1:1	CHECKED	<i>[Signature]</i>				
	APPROVED	<i>[Signature]</i>				
	DATE	15.12.07				
MACHINE: OXYGEN PLANT			TYPE: 4511:05			
TITLE:			DRAWING No:			REV.
DOUBLE TAKE CONNECTING FLANGE (OXYGEN PIPE LINE)			4M20B0528118			
			Sheet No:			No. of Sheets