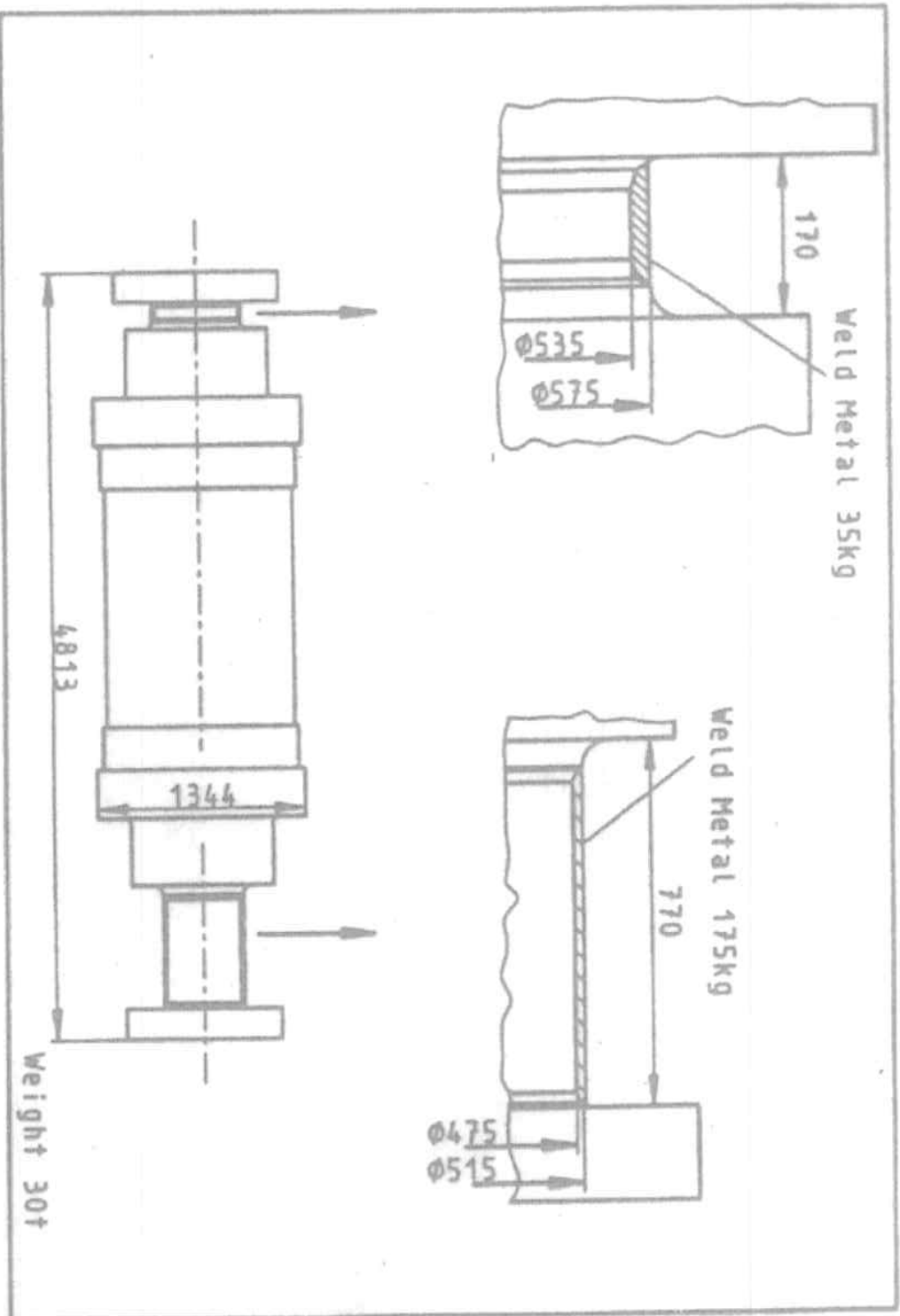


ANNEXURE - I



TYPICAL ROTOR SHOWING AREAS OF WELD OVERLAYING

## ANNEXURE - II

### DETAILS OF ROTOR FOR WELD OVERLAYING AT BEARING AREAS

- Rotor Material : X12CrMoWVNbN 10 11

- Chemical Composition:

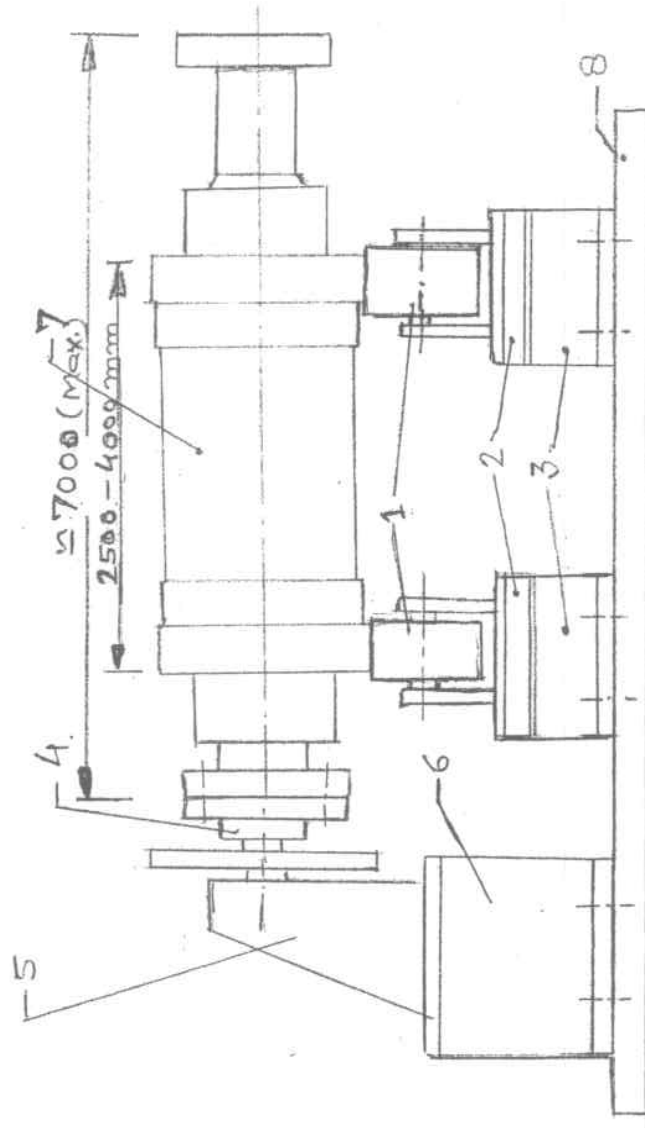
C	: 0.11-0.14,	Mn	: 0.80-1.20,
Cr	: 9.20-10.20,	Mo	: 0.90-1.05,
Ni	: 0.60-0.80,	V	: 0.18-0.25,
W	: 0.95-1.05,	N	: 0.04-0.06
Nb	: 0.05-0.08,		

- Mechanical Properties:

UTS	: 680-850 N/mm <sup>2</sup> ,
YS	: >520 N/mm <sup>2</sup> ,
% El	: > 15%,
Impact	: > 35J at RT

# ANNEXURE – III

- 1 - SELF CENTERING ROLLERS SET  
(CAPACITY -25 MT EACH SET)
- 2 - SUPPORTS
- 3 - SUPPORT PEDESTALS
- 4 - FLEXIBLE COUPLING  
ARRANGEMENT
- 5 - ROTATOR
- 6 - ROTATOR PEDESTAL WITH  
HYDRAULIC JACK SYSTEM
- 7 - ROTOR FOR WELD OVERLAYING  
AT BEARING AREAS
- 8 - BASE PLATE ON FLOOR OF THE  
SHOP



**SCHEMATIC DIAGRAM FOR ROTOR SUPPORTING AND ROTATING SYSTEM**