



Bharat Heavy Electricals Limited
(Seamless steel Tube Plant)
Tiruchirappalli – 620014, TAMIL NADU, INDIA

TITLE: SUPPLY OF EXTENSION STEM, THREADED FOLLOWER AND TIE ROD – 8 Items	Phone: +91 431 257 8428 Email : rvmurugan@bheltry.co.in Web : www.bhel.com	
Reference Number: 9440543E	Date: 18.04.2014	Due date for submission of application: 08.05.2014

BHEL/SSTP, Trichy is looking for vendors to supply of EXTENSION STEM, THREADED FOLLOWER AND TIE ROD – 8 Items as per Tender documents attached.

A. Important Note to New Vendors

The new vendors will be required to furnish the following documentary proof/ information along with their offers:

1. Certificate of registration (copy of certificate to be submitted).
2. Banker's information (copy of bank pass book first page to be submitted).
3. MSME vendor certificate (if applicable).
4. Address of your organization (complete postal address with PINCODE).
5. Contact person's Phone No. /Mobile No. / FAX No. /E-mail ID.
6. Statutory documents – VAT / TIN / EXCISE REGISTRATION / CST REGN / SERVICE TAX REGISTRATION etc. (copy to be furnished)
7. NSIC/SSI Certificate (if applicable)
8. ISO Certificate (if applicable)
9. Experience certificate as proof of supply of similar items to any Govt. agencies / PSU / Organisations (copy of PO's to be furnished).
10. Audit Report/ IT Return (if applicable)
11. Agency agreement with manufacturer (if applicable)
12. Partnership Deed (if applicable).

If the new vendors fail to submit the above documentary proof/information, their offers will not be considered for this enquiry.

"MSE suppliers can avail the intended benefits only if they submit along with offer, attested copies of either EM II certificate having deemed validity (Two years from the date of issue of acknowledgement in EM-II) or valid NSIC certificate or EM II certificate along with CA certificate (Format enclosed) applicable for the year,



An ISO 9001
Company

Bharat Heavy Electricals Limited **(Seamless steel Tube Plant)**

Tiruchirappalli – 620014, TAMIL NADU, INDIA

certifying quantum of investment in plant and machinery within the permissible limit as per the act for relevant status (Micro or small) where the deemed validity of EM II is over. Date to be reckoned for determining the deemed validity will be the last date of bid submission. Non submission of such documents will lead to consideration of their bids at par with other bidders and MSE status of such suppliers shall be shifted to Non MSE supplier till the supplier submits these documents".

Purchase Officer / Purchase /SSTP

Phone: 0431-257 8440.

Mail: neerajxalxo@bheltry.co.in



BHARAT HEAVY ELECTRICALS LIMITED
(A GOVERNMENT OF INDIA UNDERTAKING)
SEAMLESS STEEL TUBE PLANT
TIRUCHIRAPALLI - 620 014.
TAMILNADU (INDIA)

PHONE : 0431-2578480/8491
: 0431-2578406/8419
: 0431-2578568
FAX : 0431-2576828

TIN : 33243560005

CST. No. : 239383
Dated : 11.06.1991

PURCHASE ENQUIRY

VENDOR CODE

20089

ENQUIRY NUMBER

9440543E

ENQUIRY DATE

18/04/2014

ENQUIRY DUE DATE

08/05/2014

No. OF ITEMS

08

Office Copy

IMPORTANT POINTS :

1. Tender Closing Time : 14.00 Hrs.
2. Tender Opening Time : 15.00 Hrs.
3. Tender should be submitted in a sealed cover, duly indicating enquiry No. Enquiry date & Enquiry Due Date on the cover.
4. Offer(s) received through Courier Services after 14.00 Hrs. on Enquiry Due Date will not be considered.
5. Late Tender(s) is/are liable for rejection.
6. Offer(s) shall be valid for 60 days from Enquiry Due Date.
7. Offer(s) in Vendor's Letter head shall contain.
 - a. Offer No. and Date
 - b. Delivery Period
 - c. Delivery Terms
 - d. Payment Terms
 - e. Excise Duty with Tariff Heading Sales Tax (against form-XVII/Form-C). etc.
 - f. Excise Regn. No. and SSI Regn. No.

Kindly arrange to submit your **COMPETITIVE OFFER** for the following item(s)
If you are not in a position to submit your Offer, kindly arrange to send your **REGRET LETTER**.

THIS IS ONLY A REQUEST FOR OFFER AND NOT AN ORDER

Sl.No.	BHEL Material Code and Description	Unit	Requirement	
			Quantity	Delivery
01	BHEL Material Code : SP9111114548 ----- EXTENSION STEM DRAWING No: 4-7-1111-00-01330 REV 02. MATERIAL : X85Cr18Mo2V IS:1570	Nos.	01 25.000	13/09/2014
02	BHEL Material Code : SP9111114520 ----- VALVE CONE DRG No. :4-7-1111-01-01326 MATERIAL :X90CrMoV18 HEAT TREATMENT:HARDEN TO HRC 55 TO 57	Nos.	01 25.000	13/09/2014
03	BHEL Material Code : SP8724010026 ----- THREADED FOLLOWER DRG NO:4-7-0504-02-05826 MAT:30C8 IS:1875	Nos.	01 20.000	13/09/2014
04	BHEL Material Code : SP8724010027 ----- PISTON PAD DRG NO:4-7-0504-02-05827 MAT:30C8 IS:1875	Nos.	01 10.000	13/09/2014
05	BHEL Material Code : SP8724010024 ----- RETAINING PLATE DRG NO:4-7-0504-02-05824 MAT:Fe410WB IS:2062	Nos.	01 5.000	13/09/2014

IMPORTANT NOTE :

1. Delivery Terms : "Free Delivery at BHEL-SSTP STORES" is preferable.
2. Payment Terms : 100% payment after 45 days after receipt and acceptance of materials by BHEL.
3. Terms and Conditions of Tender : Please see reverse.
4. The Technical Requirements/Specification Details/Quality Requirements/Commercial Terms & Conditions are clearly furnished in the Tender. If Deviation(s) is/are not explicitly brought out in the Offer, it will be construed that the Tenderer is complying with the requirement of BHEL in full without any deviation(s).

For and on behalf of

BHARAT HEAVY ELECTRICALS LTD.

PURCHASE EXECUTIVE



BHARAT HEAVY ELECTRICALS LIMITED
 (A GOVERNMENT OF INDIA UNDERTAKING)
 SEAMLESS STEEL TUBE PLANT
 TIRUCHIRAPALLI - 620 014.
 TAMILNADU (INDIA)

PHONE : 0431-2578480/8491
 : 0431-2578406/8419
 : 0431-2578568
 FAX : 0431-2576828

TIN : 33243560005
 CST. No. : 239383
 Dated : 11.06.1991

PURCHASE ENQUIRY

VENDOR CODE 20089	ENQUIRY NUMBER 9440543E	ENQUIRY DATE 18/04/2014	ENQUIRY DUE DATE 08/05/2014	No. OF ITEM 08
----------------------	----------------------------	----------------------------	--------------------------------	-------------------

Office Copy

- IMPORTANT POINTS :**
1. Tender Closing Time : 14.00 Hrs.
 2. Tender Opening Time : 15.00 Hrs.
 3. Tender should be submitted in a sealed cover, duly indicating enquiry No. Enquiry date & Enquiry Due Date on the cover.
 4. Offer(s) received through Courier Services after 14.00 Hrs. on Enquiry Due Date will not be considered.
 5. Late Tender(s) is/are liable for rejection.
 6. Offer(s) shall be valid for 60 days from Enquiry Due Date.
 7. Offer(s) in Vendor's Letter head shall contain.
 - a. Offer No. and Date
 - b. Delivery Period
 - c. Delivery Terms
 - d. Payment Terms
 - e. Excise Duty with Tariff Heading Sales Tax (against form-XVII/Form-C). etc.
 - f. Excise Regn. No. and SSI Regn. No.

Kindly arrange to submit your COMPETITIVE OFFER for the following item(s)
 If you are not in a position to submit your Offer, kindly arrange to send your REGRET LETTER.

THIS IS ONLY A REQUEST FOR OFFER AND NOT AN ORDER

Sl.No.	BHEL Material Code and Description	Unit	Requirement	
			Quantity	Delivery
06	BHEL Material Code : SP8724010023 ----- SPACER DRG.NO:4-7-0504-02-05823 MAT:30C8 IS:1875	Nos.	01 10.000	13/09/2014
07	BHEL Material Code : SP9112741035 ----- TIE ROD WITH THREADED SLEEVES ON BOTH ENDS DRAWING No : 3-7-1127-06-02875.REV.01 4-7-1127-06-03594.REV.01 MATERIAL : 45C8 IS:1875	Nos.	01 4.000	26/05/2014
08	BHEL Material Code : SP9112741038 ----- TIE ROD WITH THREADED SLEEVES ON BOTH ENDS DRG No : 3-7-1127-06-02747.REV.01 4-7-1127-06-03594.REV.01 MATL : 45C8 IS:1875	Nos.	01 4.000	26/05/2014
<p>Foot Note :: ----- THIS TENDER IS CALLED ON TWO BID SYSTEM.KINDLY REFER THE ANNEXURE-A & C ATTACHED. CONFIRM THE FOLLOWING COMMERCIAL POINTS WITHOUT FAIL: ----- 1.OUR STD PAYMENT TERMS IS 100 % PYT WITH IN 45 DAYS ON RECEIPT AND ACCEPTANCE OF MATERIALS THRO E-PAYMENT.FORMAT WILL BE SENT ALONG WITH PUR ORDER.</p>				

IMPORTANT NOTE :

1. Delivery Terms : "Free Delivery at BHEL-SSTP STORES" is preferable.
2. Payment Terms : 100% payment after 45 days after receipt and acceptance of materials by BHEL.
3. Terms and Conditions of Tender : Please see reverse.
4. The Technical Requirements/Specification Details/Quality Requirements/Commercial Terms & Conditions are clearly furnished in the Tender. If Deviation(s) is/are not explicitly brought out in the Offer, it will be construed that the Tenderer is complying with the requirement of BHEL in full without any deviation(s).

For and on behalf of
BHARAT HEAVY ELECTRICALS LTD.

PURCHASE EXECUTIVE



BHARAT HEAVY ELECTRICALS LIMITED
 (A GOVERNMENT OF INDIA UNDERTAKING)
 SEAMLESS STEEL TUBE PLANT
 TIRUCHIRAPALLI - 620 014.
 TAMILNADU (INDIA)

PHONE : 0431-2578480/8491
 : 0431-2578406/8419
 : 0431-2578568
 FAX : 0431-2576828

TIN : 33243560005

CST. No. : 239383
 Dated : 11.06.1991

PURCHASE ENQUIRY

VENDOR CODE 20089	ENQUIRY NUMBER 9440543E	ENQUIRY DATE 18/04/2014	ENQUIRY DUE DATE 08/05/2014	No. OF ITEM 08
----------------------	----------------------------	----------------------------	--------------------------------	-------------------

Office Copy

IMPORTANT POINTS :

1. Tender Closing Time : 14.00 Hrs.
2. Tender Opening Time : 15.00 Hrs.
3. Tender should be submitted in a sealed cover, duly indicating enquiry No. Enq. No. & Enquiry Due Date on the cover.
4. Offer(s) received through Courier Services after 14.00 Hrs. on Enquiry Due Date will not be considered.
5. Late Tender(s) is/are liable for rejection.
6. Offer(s) shall be valid for 60 days from Enquiry Due Date.
7. Offer(s) in Vendor's Letter head shall contain.
 - a. Offer No. and Date
 - b. Delivery Period
 - c. Delivery Terms
 - d. Payment Terms
 - e. Excise Duty with Tariff Heading Sales Tax (against form-XVII/Form-C). etc.
 - f. Excise Regn. No. and SSI Regn. No.

Kindly arrange to submit your COMPETITIVE OFFER for the following item(s)
 If you are not in a position to submit your Offer, kindly arrange to send your REGRET LETTER.

THIS IS ONLY A REQUEST FOR OFFER AND NOT AN ORDER

Sl.No.	BHEL Material Code and Description	Unit	Requirement	
			Quantity	Delivery
	2. INSPECTION WILL BE CARRIED OUT AT YR WORKS PRIOR TO DESPATCH BY BHEL. FOR WHICH ONE WEEK ADVANCE INTIMATION IS TO BE GIVEN ON READINESS OF MATERIAL. 3. PL QUOTE THE RATE ON DOOR DELIVERY BASIS DULY INCLUDING PKG, FORWARDING, FREIGHT AND INSURANCE CHARGES. 4. TEST CERTIFICATES FO MATERIAL CHEMICAL COMPOSITION TO BE SUBMITTED ALONG WITH SUPPLIES. 5. CONFIRM YR ACCEPTANCE FOR LD AND RISK PURCHASE CLAUSES.			

IMPORTANT NOTE :

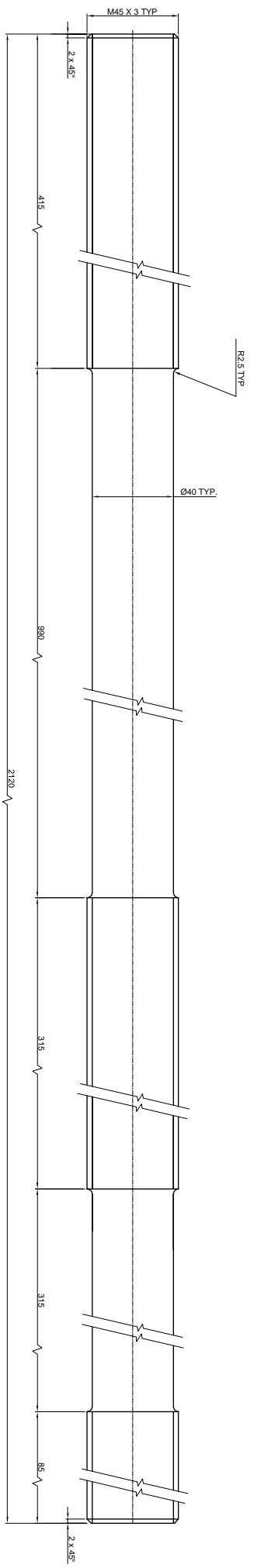
1. Delivery Terms : "Free Delivery at BHEL-SSTP STORES" is preferable.
2. Payment Terms : 100% payment after 45 days after receipt and acceptance of materials by BHEL.
3. Terms and Conditions of Tender : Please see reverse.
4. The Technical Requirements/Specification Details/Quality Requirements/Commercial Terms & Conditions are clearly furnished in the Tender. If Deviation(s) is/are not explicitly brought out in the Offer, it will be construed that the Tenderer is complying with the requirement of BHEL in full without any deviation(s).

For and on behalf of
BHARAT HEAVY ELECTRICALS LTD.

PURCHASE EXECUTIVE

REGISTERED OFFICE : BHEL HOUSE, SIRI FORT, NEW DELHI - 110 049.

ALL DIMENSIONS ARE IN MILLIMETRES



1/6

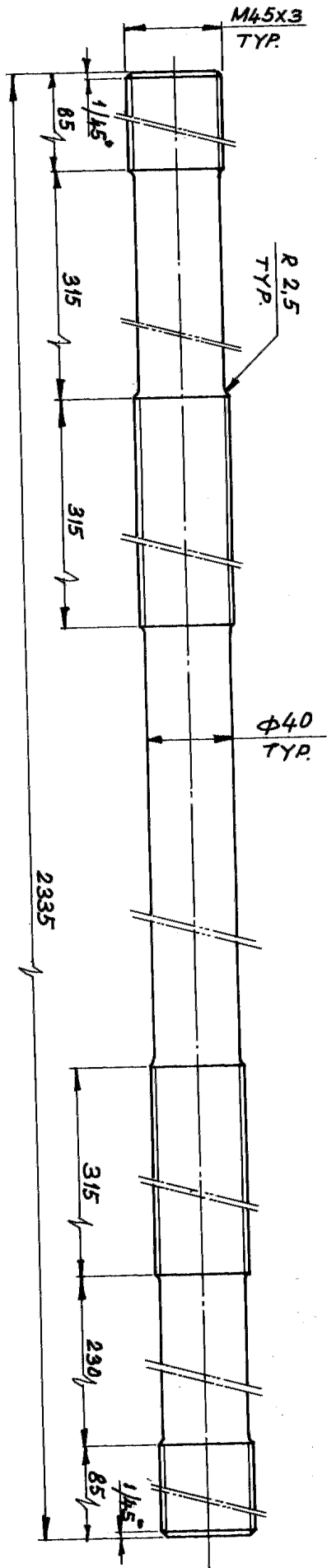
REV	DATE	ALTERED	BY	REV	DATE	ALTERED	BY
02	02.08.11	CHECKED	R.SUNDAR SSN KUMAR	01	17.08.96	CHECKED	A.Arockiam SS Sundaram
G.I. LOGANATHAN				SS Sundaram			

CONVERT TO AUTOCAD DWG

MATL. SPCN. 45C8 IS:1875
WAS C45 IS: 2073

CAUTION: THE INFORMATION ON THIS DOCUMENT IS THE PROPERTY OF BHARAT HEAVY ELECTRICALS LIMITED. IT MUST NOT BE USED DIRECTLY OR INDIRECTLY IN ANY WAY DETRIMENTAL TO THE INTEREST OF THE COMPANY.

DEPT	SSTP	GRADE OF UNTO. DIM	SCALE	WEIGHT (Kg)	DRN	NAME	SIGNATURE	DATE
456	IS:2102	ϕ M / ϕ	1:2	23.05	V.S.MANIAN	<i>V.S. Manian</i>	08.10.87	
				Bharat Heavy Electricals Ltd SEAMLESS STEEL TUBE PLANT TIRUCHIRAPPALLI - 620014				
TITLE TIE ROD TYPE IV & VII (COVER LOCKING SYSTEM)				DRAWING NO		MATERIAL SPEC		UNIT WT
CARD CODE U 01				DRAWING NO :		MATERIAL SPEC		QTY
REF TO ASSY DWG NO 0-7-1127-06-00215				DRAWING NO :		MATERIAL SPEC		QTY
REF TO OLD DWG NO -				DRAWING NO :		MATERIAL SPEC		QTY
APPD SS.SUNDARAM				DRAWING NO :		MATERIAL SPEC		QTY
CHD A.AROCKIAM				DRAWING NO :		MATERIAL SPEC		QTY
DRN V.S.MANIAN				DRAWING NO :		MATERIAL SPEC		QTY
APPD SS.SUNDARAM				DRAWING NO :		MATERIAL SPEC		QTY
CHD A.AROCKIAM				DRAWING NO :		MATERIAL SPEC		QTY
DRN V.S.MANIAN				DRAWING NO :		MATERIAL SPEC		QTY
APPD SS.SUNDARAM				DRAWING NO :		MATERIAL SPEC		QTY
CHD A.AROCKIAM				DRAWING NO :		MATERIAL SPEC		QTY
DRN V.S.MANIAN				DRAWING NO :		MATERIAL SPEC		QTY
APPD SS.SUNDARAM				DRAWING NO :		MATERIAL SPEC		QTY
CHD A.AROCKIAM				DRAWING NO :		MATERIAL SPEC		QTY
DRN V.S.MANIAN				DRAWING NO :		MATERIAL SPEC		QTY
APPD SS.SUNDARAM				DRAWING NO :		MATERIAL SPEC		QTY
CHD A.AROCKIAM				DRAWING NO :		MATERIAL SPEC		QTY
DRN V.S.MANIAN				DRAWING NO :		MATERIAL SPEC		QTY
APPD SS.SUNDARAM				DRAWING NO :		MATERIAL SPEC		QTY
CHD A.AROCKIAM				DRAWING NO :		MATERIAL SPEC		QTY
DRN V.S.MANIAN				DRAWING NO :		MATERIAL SPEC		QTY
APPD SS.SUNDARAM				DRAWING NO :		MATERIAL SPEC		QTY
CHD A.AROCKIAM				DRAWING NO :		MATERIAL SPEC		QTY
DRN V.S.MANIAN				DRAWING NO :		MATERIAL SPEC		QTY
APPD SS.SUNDARAM				DRAWING NO :		MATERIAL SPEC		QTY
CHD A.AROCKIAM				DRAWING NO :		MATERIAL SPEC		QTY
DRN V.S.MANIAN				DRAWING NO :		MATERIAL SPEC		QTY
APPD SS.SUNDARAM				DRAWING NO :		MATERIAL SPEC		QTY
CHD A.AROCKIAM				DRAWING NO :		MATERIAL SPEC		QTY
DRN V.S.MANIAN				DRAWING NO :		MATERIAL SPEC		QTY
APPD SS.SUNDARAM				DRAWING NO :		MATERIAL SPEC		QTY
CHD A.AROCKIAM				DRAWING NO :		MATERIAL SPEC		QTY
DRN V.S.MANIAN				DRAWING NO :		MATERIAL SPEC		QTY
APPD SS.SUNDARAM				DRAWING NO :		MATERIAL SPEC		QTY
CHD A.AROCKIAM				DRAWING NO :		MATERIAL SPEC		QTY
DRN V.S.MANIAN				DRAWING NO :		MATERIAL SPEC		QTY
APPD SS.SUNDARAM				DRAWING NO :		MATERIAL SPEC		QTY
CHD A.AROCKIAM				DRAWING NO :		MATERIAL SPEC		QTY
DRN V.S.MANIAN				DRAWING NO :		MATERIAL SPEC		QTY
APPD SS.SUNDARAM				DRAWING NO :		MATERIAL SPEC		QTY
CHD A.AROCKIAM				DRAWING NO :		MATERIAL SPEC		QTY
DRN V.S.MANIAN				DRAWING NO :		MATERIAL SPEC		QTY
APPD SS.SUNDARAM				DRAWING NO :		MATERIAL SPEC		QTY
CHD A.AROCKIAM				DRAWING NO :		MATERIAL SPEC		QTY
DRN V.S.MANIAN				DRAWING NO :		MATERIAL SPEC		QTY
APPD SS.SUNDARAM				DRAWING NO :		MATERIAL SPEC		QTY
CHD A.AROCKIAM				DRAWING NO :		MATERIAL SPEC		QTY
DRN V.S.MANIAN				DRAWING NO :		MATERIAL SPEC		QTY
APPD SS.SUNDARAM				DRAWING NO :		MATERIAL SPEC		QTY
CHD A.AROCKIAM				DRAWING NO :		MATERIAL SPEC		QTY
DRN V.S.MANIAN				DRAWING NO :		MATERIAL SPEC		QTY
APPD SS.SUNDARAM				DRAWING NO :		MATERIAL SPEC		QTY
CHD A.AROCKIAM				DRAWING NO :		MATERIAL SPEC		QTY
DRN V.S.MANIAN				DRAWING NO :		MATERIAL SPEC		QTY
APPD SS.SUNDARAM				DRAWING NO :		MATERIAL SPEC		QTY
CHD A.AROCKIAM				DRAWING NO :		MATERIAL SPEC		QTY
DRN V.S.MANIAN				DRAWING NO :		MATERIAL SPEC		QTY
APPD SS.SUNDARAM				DRAWING NO :		MATERIAL SPEC		QTY
CHD A.AROCKIAM				DRAWING NO :		MATERIAL SPEC		QTY
DRN V.S.MANIAN				DRAWING NO :		MATERIAL SPEC		QTY
APPD SS.SUNDARAM				DRAWING NO :		MATERIAL SPEC		QTY
CHD A.AROCKIAM				DRAWING NO :		MATERIAL SPEC		QTY
DRN V.S.MANIAN				DRAWING NO :		MATERIAL SPEC		QTY
APPD SS.SUNDARAM				DRAWING NO :		MATERIAL SPEC		QTY
CHD A.AROCKIAM				DRAWING NO :		MATERIAL SPEC		QTY
DRN V.S.MANIAN				DRAWING NO :		MATERIAL SPEC		QTY
APPD SS.SUNDARAM				DRAWING NO :		MATERIAL SPEC		QTY
CHD A.AROCKIAM				DRAWING NO :		MATERIAL SPEC		QTY
DRN V.S.MANIAN				DRAWING NO :		MATERIAL SPEC		QTY
APPD SS.SUNDARAM				DRAWING NO :		MATERIAL SPEC		QTY
CHD A.AROCKIAM				DRAWING NO :		MATERIAL SPEC		QTY
DRN V.S.MANIAN				DRAWING NO :		MATERIAL SPEC		QTY
APPD SS.SUNDARAM				DRAWING NO :		MATERIAL SPEC		QTY
CHD A.AROCKIAM				DRAWING NO :		MATERIAL SPEC		QTY
DRN V.S.MANIAN				DRAWING NO :		MATERIAL SPEC		QTY
APPD SS.SUNDARAM				DRAWING NO :		MATERIAL SPEC		QTY
CHD A.AROCKIAM				DRAWING NO :		MATERIAL SPEC		QTY
DRN V.S.MANIAN				DRAWING NO :		MATERIAL SPEC		QTY
APPD SS.SUNDARAM				DRAWING NO :		MATERIAL SPEC		QTY
CHD A.AROCKIAM				DRAWING NO :		MATERIAL SPEC		QTY
DRN V.S.MANIAN				DRAWING NO :		MATERIAL SPEC		QTY
APPD SS.SUNDARAM				DRAWING NO :		MATERIAL SPEC		QTY
CHD A.AROCKIAM				DRAWING NO :		MATERIAL SPEC		QTY
DRN V.S.MANIAN				DRAWING NO :		MATERIAL SPEC		QTY
APPD SS.SUNDARAM				DRAWING NO :		MATERIAL SPEC		QTY
CHD A.AROCKIAM				DRAWING NO :		MATERIAL SPEC		QTY
DRN V.S.MANIAN				DRAWING NO :		MATERIAL SPEC		QTY
APPD SS.SUNDARAM				DRAWING NO :		MATERIAL SPEC		QTY
CHD A.AROCKIAM				DRAWING NO :		MATERIAL SPEC		QTY
DRN V.S.MANIAN				DRAWING NO :		MATERIAL SPEC		QTY
APPD SS.SUNDARAM				DRAWING NO :		MATERIAL SPEC		QTY
CHD A.AROCKIAM				DRAWING NO :		MATERIAL SPEC		QTY
DRN V.S.MANIAN				DRAWING NO :		MATERIAL SPEC		QTY
APPD SS.SUNDARAM				DRAWING NO :		MATERIAL SPEC		QTY
CHD A.AROCKIAM				DRAWING NO :		MATERIAL SPEC		QTY
DRN V.S.MANIAN				DRAWING NO :		MATERIAL SPEC		QTY
APPD SS.SUNDARAM				DRAWING NO :		MATERIAL SPEC		QTY
CHD A.AROCKIAM				DRAWING NO :		MATERIAL SPEC		QTY
DRN V.S.MANIAN				DRAWING NO :		MATERIAL SPEC		QTY
APPD SS.SUNDARAM				DRAWING NO :		MATERIAL SPEC		QTY
CHD A.AROCKIAM				DRAWING NO :		MATERIAL SPEC		QTY
DRN V.S.MANIAN				DRAWING NO :		MATERIAL SPEC		QTY
APPD SS.SUNDARAM				DRAWING NO :		MATERIAL SPEC		QTY
CHD A.AROCKIAM				DRAWING NO :		MATERIAL SPEC		QTY
DRN V.S.MANIAN				DRAWING NO :		MATERIAL SPEC		QTY
APPD SS.SUNDARAM				DRAWING NO :		MATERIAL SPEC		QTY
CHD A.AROCKIAM				DRAWING NO :		MATERIAL SPEC		QTY
DRN V.S.MANIAN				DRAWING NO :		MATERIAL SPEC		QTY
APPD SS.SUNDARAM				DRAWING NO :		MATERIAL SPEC		QTY
CHD A.AROCKIAM				DRAWING NO :		MATERIAL SPEC		QTY
DRN V.S.MANIAN				DRAWING NO :		MATERIAL SPEC		QTY
APPD SS.SUNDARAM				DRAWING NO :		MATERIAL SPEC		QTY
CHD A.AROCKIAM				DRAWING NO :		MATERIAL SPEC		QTY
DRN V.S.MANIAN				DRAWING NO :		MATERIAL SPEC		QTY
APPD SS.SUNDARAM				DRAWING NO :		MATERIAL SPEC		QTY
CHD A.AROCKIAM				DRAWING NO :		MATERIAL SPEC		QTY
DRN V.S.MANIAN				DRAWING NO :		MATERIAL SPEC		QTY
APPD SS.SUNDARAM				DRAWING NO :		MATERIAL SPEC		QTY
CHD A.AROCKIAM				DRAWING NO :		MATERIAL SPEC		QTY
DRN V.S.MANIAN				DRAWING NO :		MATERIAL SPEC		QTY
APPD SS.SUNDARAM				DRAWING NO :		MATERIAL SPEC		QTY
CHD A.AROCKIAM				DRAWING NO :		MATERIAL SPEC		QTY
DRN V.S.MANIAN				DRAWING NO :		MATERIAL SPEC		QTY
APPD SS.SUNDARAM				DRAWING NO :		MATERIAL SPEC		QTY
CHD A.AROCKIAM				DRAWING NO :		MATERIAL SPEC		QTY
DRN V.S.MANIAN				DRAWING NO :		MATERIAL SPEC		QTY
APPD SS.SUNDARAM				DRAWING NO :		MATERIAL SPEC		QTY
CHD A.AROCKIAM				DRAWING NO :		MATERIAL SPEC		QTY
DRN V.S.MANIAN				DRAWING NO :		MATERIAL SPEC		QTY
APPD SS.SUNDARAM				DRAWING NO :		MATERIAL SPEC		QTY
CHD A.AROCKIAM				DRAWING NO :		MATERIAL SPEC		QTY
DRN V.S.MANIAN				DRAWING NO :		MATERIAL SPEC		QTY
APPD SS.SUNDARAM				DRAWING NO :		MATERIAL SPEC		QTY
CHD A.AROCKIAM				DRAWING NO :		MATERIAL SPEC		QTY
DRN V.S.MANIAN				DRAWING NO :		MATERIAL SPEC		QTY
APPD SS.SUNDARAM				DRAWING NO :		MATERIAL SPEC		QTY
CHD A.AROCKIAM				DRAWING NO :		MATERIAL SPEC		QTY
DRN V.S.MANIAN				DRAWING NO :		MATERIAL SPEC		QTY
APPD SS.SUNDARAM				DRAWING NO :		MATERIAL SPEC		QTY
CHD A.AROCKIAM				DRAWING NO :		MATERIAL SPEC		QTY
DRN V.S.MANIAN				DRAWING NO :		MATERIAL SPEC		QTY
APPD SS.SUNDARAM				DRAWING NO :		MATERIAL SPEC		QTY
CHD A.AROCKIAM				DRAWING NO :		MATERIAL SPEC		QTY
DRN V.S.MANIAN				DRAWING NO :		MATERIAL SPEC		QTY
APPD SS.SUNDARAM				DRAWING NO :		MATERIAL SPEC		QTY
CHD A.AROCKIAM				DRAWING NO :		MATERIAL SPEC		QTY
DRN V.S.MANIAN				DRAWING NO :		MATERIAL SPEC		QTY
APPD SS.SUNDARAM				DRAWING NO :		MATERIAL SPEC		QTY
CHD A.AROCKIAM				DRAWING NO :		MATERIAL SPEC		QTY
DRN V.S.MANIAN				DRAWING NO :		MATERIAL SPEC		QTY
APPD SS.SUNDARAM				DRAWING NO :		MATERIAL SPEC		QTY
CHD A.AROCKIAM				DRAWING NO :		MATERIAL SPEC		QTY
DRN V.S.MANIAN				DRAWING NO :		MATERIAL SPEC		QTY
APPD SS.SUNDARAM				DRAWING NO :		MATERIAL SPEC		QTY
CHD A.AROCKIAM				DRAWING NO :		MATERIAL SPEC		QTY
DRN V.S.MANIAN				DRAWING NO :		MATERIAL SPEC		QTY
APPD SS.SUNDARAM				DRAWING NO :		MATERIAL SPEC		QTY
CHD A.AROCKIAM				DRAWING NO :		MATERIAL SPEC		QTY
DRN V.S.MANIAN				DRAWING NO :		MATERIAL SPEC		QTY
APPD SS.SUNDARAM				DRAWING NO :		MATERIAL SPEC		QTY
CHD A.AROCKIAM				DRAWING NO :		MATERIAL SPEC		QTY
DRN V.S.MANIAN				DRAWING NO :		MATERIAL SPEC		QTY
APPD SS.SUNDARAM				DRAWING NO :		MATERIAL SPEC		QTY
CHD A.AROCKIAM				DRAWING NO :		MATERIAL SPEC		QTY
DRN V.S.MANIAN				DRAWING NO :		MATERIAL SPEC		QTY
APPD SS.SUNDARAM				DRAWING NO :		MATERIAL SPEC		QTY
CHD A.AROCKIAM				DRAWING NO :		MATERIAL SPEC		QTY
DRN V.S.MANIAN				DRAWING NO :		MATERIAL SPEC		QTY
APPD SS.SUNDARAM				DRAWING NO :		MATERIAL SPEC		QTY
CHD A.AROCKIAM				DRAWING NO :		MATERIAL SPEC		QTY
DRN V.S.MANIAN				DRAWING NO :		MATERIAL SPEC		QTY
APPD SS.SUNDARAM				DRAWING NO :		MATERIAL SPEC		QTY
CHD A.AROCKIAM				DRAWING NO :		MATERIAL SPEC		QTY
DRN V.S.MANIAN				DRAWING NO :		MATERIAL SPEC		QTY
APPD SS.SUNDARAM				DRAWING NO :		MATERIAL SPEC		QTY
CHD A.AROCKIAM				DRAWING NO :		MATERIAL SPEC		QTY
DRN V.S.MANIAN				DRAWING NO :		MATERIAL SPEC		QTY
APPD SS.SUNDARAM				DRAWING NO :		MATERIAL SPEC		QTY
CHD A.AROCKIAM				DRAWING NO :		MATERIAL SPEC		QTY



16

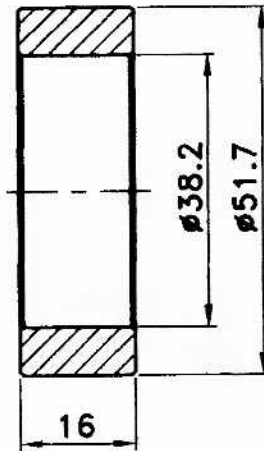
REV 01	DATE 24-1-97	ALTERED T. J. Kim	CHECKED J. Kim	ZONE
MTL SPCN. 45 C8 IS: 1875 1875 WAS C-45. IS: R0793				
DEPT CODE	GRADE OF UNTOOL DIM P	SCALE 1:2	WEIGHT (kg) 25.12	TITLE TIE ROD (COVER LOCKING SYSTEM)
OHTE Bharat Heavy Electricals Ltd., SEAMLESS STEEL TUBE PLANT TRUCHIRAPALLI - 620 014		DRN S. MOHAMMAD CHD A. RAO APPD NAME S. MOHAMMAD SIGN DATE 29.6.97	DRAWING NO. 45 C8 IS: 1875 MATL CODE MATL SPEC UNIT WT QTY	REF TO ASSY/OLD DRG 0-7-1127-06-00215 DATE 29.6.97
ITEM NO.	DESCRIPTION	DRAWING NO.	45 C8 IS: 1875 UNIT WT QTY	
E&PT: PUSH BENCH				
REV	DATE	ALTERED	CHECKED	ZONE
01	24-1-97	T. J. Kim	J. Kim	

ALL DIMENSIONS ARE IN MM

CAUTION: THE INFORMATION ON THIS DOCUMENT IS THE PROPERTY OF BHARAT HEAVY ELECTRICALS LTD
IT MUST NOT BE USED DIRECTLY OR INDIRECTLY IN ANY MANNER DETERMINAL TO INTEREST OF THE COMPANY.

REV S	DATE	ALTERED
		CHECKED
		APPROVED

3.2/



ALL SHARP CORNERS CHAMFERED TO 0.5x45°

				30C8 IS:1875		
ITEM NO	DESCRIPTION	DRAWING NO	MATERIAL CODE		UNIT WT	
			MATERIAL SPEC		QTY	
EQPT: KR150 STRAIGHTENING M/C						
	Bharat Heavy Electricals Ltd SEAMLESS STEEL TUBE PLANT TIRUCHIRAPALLI - 620014		DRN	NAME SSN.KUMAR	SIGNATURE <i>SSN.Kumar</i>	DATE 22.5.99
			CHD	AROCKIAM A	<i>J. Arani</i>	28.5.99
			APPD	SHANMUGASUNDARAM	<i>Shanmugasundaram</i>	28.5.99
DEPT MPG	GRADE OF UNTOL DIM C/M/F		SCALE 1:1	WEIGHT (Kg) 0.12	REF TO ASSY DRG	ITEM NO
CODE					REF TO OLD DRG	
TITLE SPACER COVER OPERATING CYL VELJAN 8"x2"x230			CARD CODE U 01	DRAWING NO : 4-7-0504-02-05823		REV 00

ALL DIMENSIONS ARE IN MM

CAUTION: THE INFORMATION ON THIS DOCUMENT IS THE PROPERTY OF BHARAT HEAVY ELECTRICALS LTD
IT MUST NOT BE USED DIRECTLY OR INDIRECTLY IN ANY MANNER HARMFUL TO INTEREST OF THE COMPANY

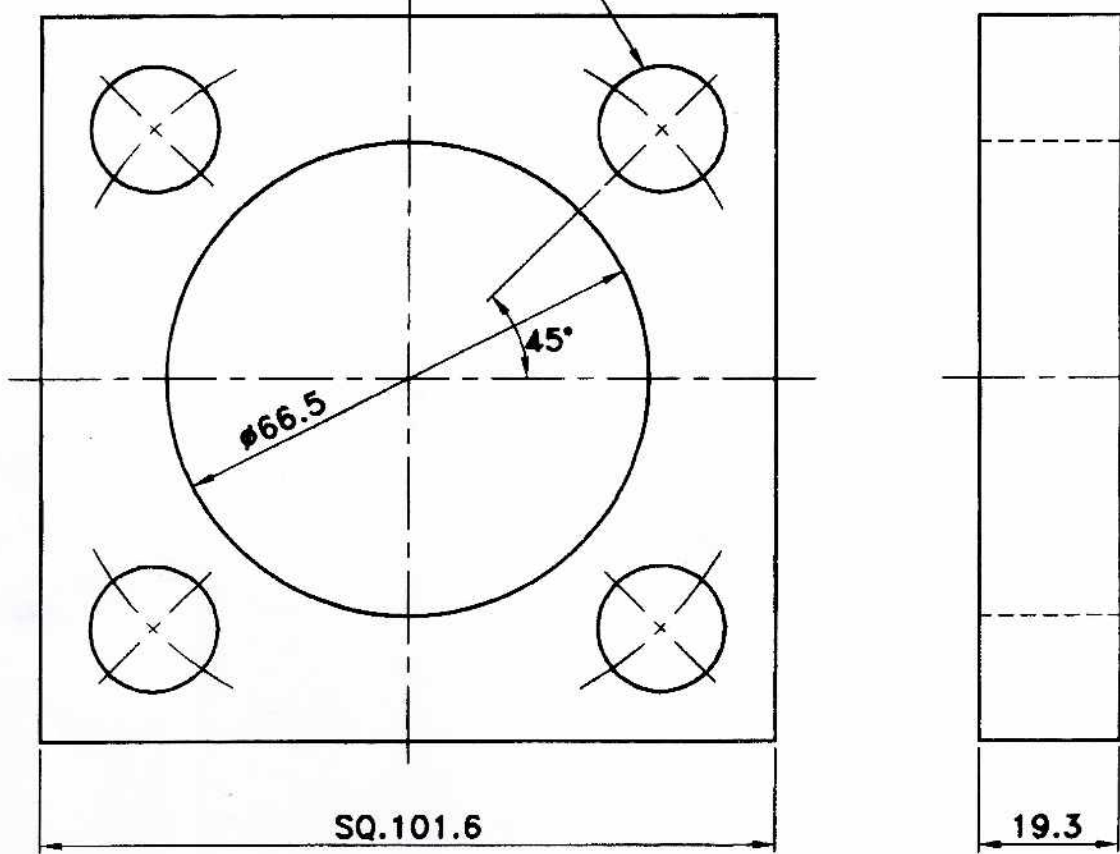
REV 01	DATE 19.6.99	ALTERED CHECKED APPROVED	<i>[Signature]</i> <i>[Signature]</i> <i>[Signature]</i>
-----------	-----------------	--------------------------------	--

3.2/
✓


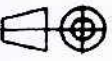
PCD 99 WAS 70



Ø17.6-4HOLES ON
PCD 99 EQUI.SPACED



ALL SHARP CORNERS CHAMFERED TO 0.5x45°

				Fe410WB IS:2062		
ITEM NO	DESCRIPTION	DRAWING NO	MATL CODE		UNIT WT	
			MATL SPEC		QTY	
EQPT: KR150 STRAIGHTENING M/C						
 Bharat Heavy Electricals Ltd SEAMLESS STEEL TUBE PLANT TIRUCHIRAPALLI - 620014		DRN	NAME SSN.KUMAR	SIGNATURE <i>[Signature]</i>	DATE 22.5.99	
		CHD	AROCKIAM A	<i>[Signature]</i>	28.5.99	
		APPD	SHANMUGASUNDARAM	<i>[Signature]</i>	28.5.99	
DEPT MPG	GRADE OF UNTOOL. DIM C/M/F		SCALE 1:1	WEIGHT (Kg) 0.8	REF TO ASSY DRG	ITEM NO
CODE					REF TO OLD DRG	
TITLE RETAINING PLATE COVER OPERATING CYL.VELJAN 8"x2"x230			CARD CODE U 01	DRAWING NO : 4-7-0504-02-05824		REV 01

CAUTION: THE INFORMATION ON THIS DOCUMENT IS THE PROPERTY OF BHARAT HEAVY ELECTRICALS LTD IT MUST NOT BE USED DIRECTLY OR INDIRECTLY IN ANY MANNER DETRIMENTAL TO INTEREST OF THE COMPANY

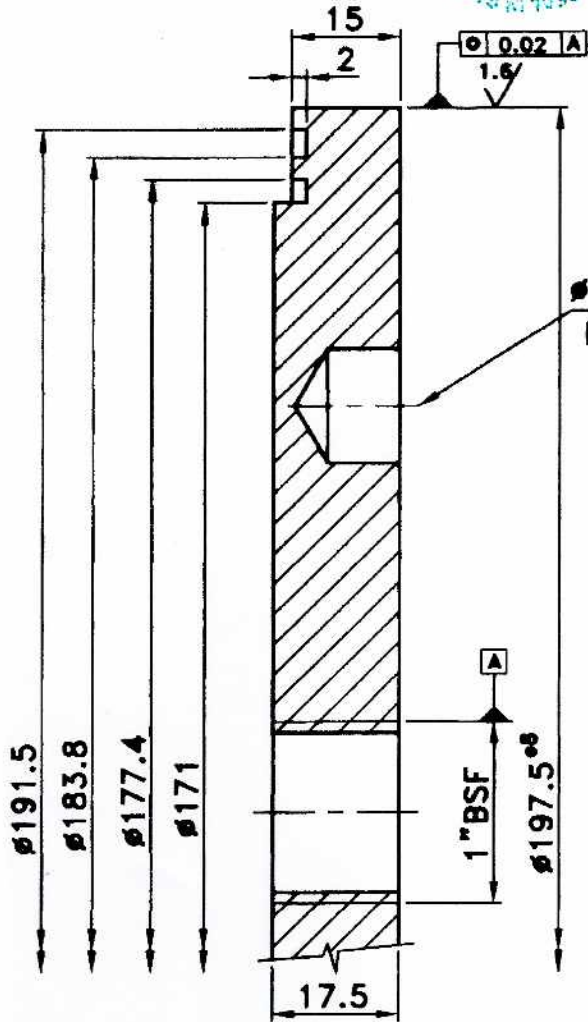
ALL DIMENSIONS ARE IN MM

REV	DATE	ALTERED
		CHECKED
		APPROVED



3.2 / 1.6 /

∅197.5 ^{±0.08}	-0.100
	-0.172



#16-4HOLES 10DEEP ON PCD114 EQUI.SPACED

ALL SHARP CORNERS CHAMFERED TO 0.5x45°

ITEM NO		DESCRIPTION		DRAWING NO		30CB IS:1875		UNIT WT	
EQPT:		KR150 STRAIGHTENING M/C				MATL CODE		QTY	
MATERIAL SPEC						MATERIAL SPEC			
DEPT		GRADE OF UNTOOL DIM		SCALE		WEIGHT (Kg)		REF TO ASSY DRG	
MPG		C/M/F		1:1		4.7		REF TO OLD DRG	
CODE		C/M/F		1:1		4.7		REF TO OLD DRG	
TITLE		Bharat Heavy Electricals Ltd SEAMLESS STEEL TUBE PLANT TIRUCHIRAPALLI - 620014		DRN		NAME SSN.KUMAR		SIGNATURE S.S.N. Kumar	
THREADED FOLLOWER COVER OPERATING CYL.VELJAN 8"x2"x230				CHD		AROCKIAM A		DATE 22.5.99	
				APPD		SHANMUGASUNDARAM		DATE 28.5.99	
CARD CODE		U 01		DRAWING NO :		4-7-0504-02-05826		REV 00	

FIRST ANGLE PROJECTION (ALL DIMENSIONS IN MILLIMETRES)

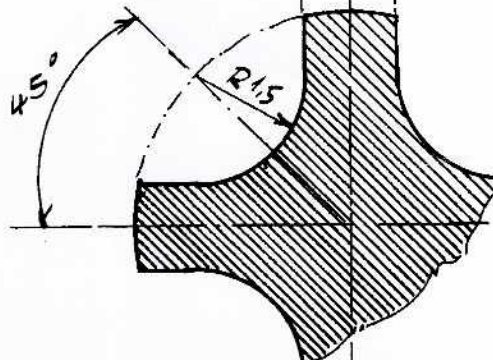
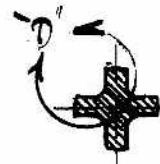
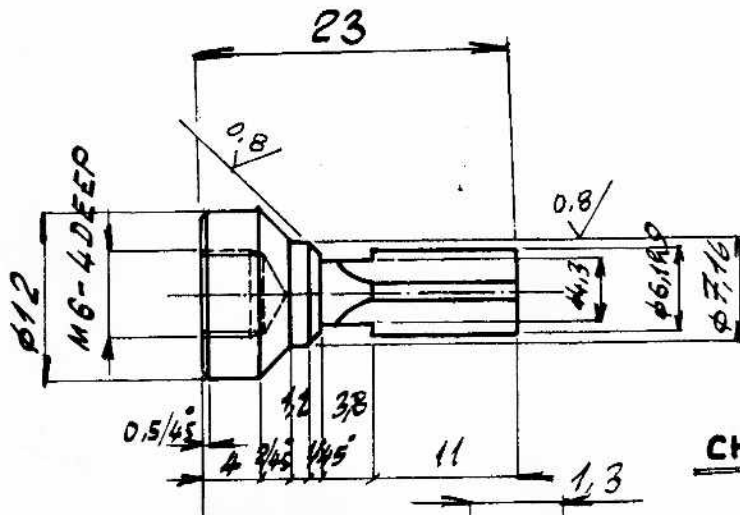
05-249/B

CAUTION THE INFORMATION ON THIS DOCUMENT IS THE PROPERTY OF BHARAT HEAVY ELECTRICALS LTD. IT MUST NOT BE USED DIRECTLY OR INDIRECTLY IN ANY WAY DETRIMENTAL TO THE INTEREST OF THE COMPANY.

REV 01	DATE	ALTERED
		CHECKED
ZONE		

1.6 / [0.8]

φ6,1R9 -0,036
-0,000



CHEMICAL COMPOSITION

C - 0,85 - 0,95%
Cr - 17,0 - 18,0%
Mo - 0,9 - 1,3%
V - 0,07 - 0,12%
Si ≤ 1,0%
Mn ≤ 1,0%
P ≤ 0,045%
S ≤ 0,030%

DETAIL-'D' HARDEN TO HRC 55 TO 57

(A) Revised the diameter = 6,1R9 instead of φ5,5

ITEM NO.	DESCRIPTION	MATL CODE	UNIT WT
		X 90 Cr Mo V 18	
		MATL SPEC	QTY

EQPT: HIGH PRESSURE WATER STATION



Bharat Heavy Electricals Ltd.,
SEAMLESS STEEL TUBE PLANT
TIRUCHIRAPALLI-620 014

DRN	NAME	SIGN	DATE
CHD			22.11.60
APPD			21 193

DEPT	GRADE OF UNTOL. DIM	SCALE	WEIGHT (kg)	REF TO ASSY / OLD DRG	ITEM NO.
CODE	C/M/F			B1 13051/p 4 111 14 520	20

TITLE	CARD CODE	DRAWING NO.	REV.
VALVE CONE (UNLOADING VALVE - LSVR 32/315)	U 01	4-7-1111-01-01326	00

FIRST ANGLE PROJECTION (ALL DIMENSIONS IN MILLIMETRES)

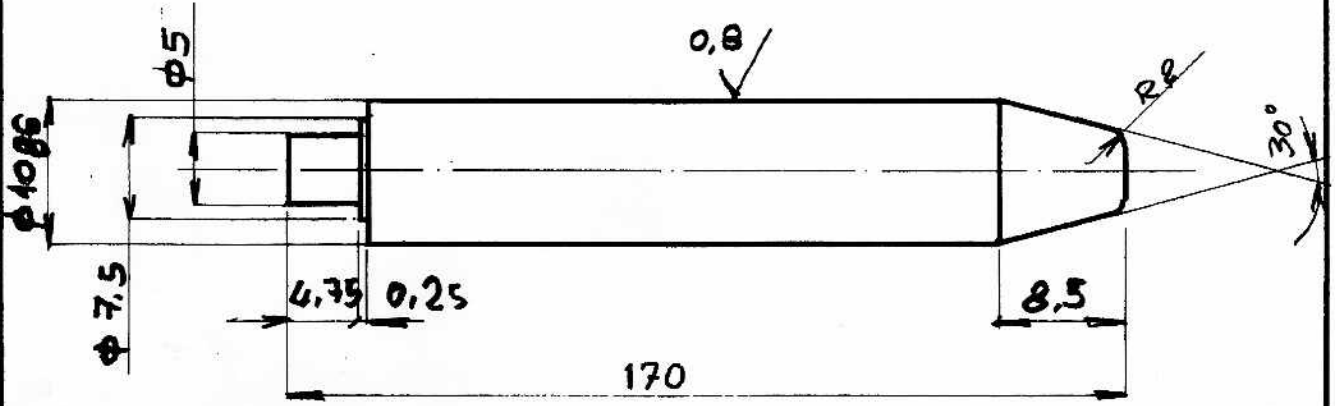
05-249/B

CAUTION THE INFORMATION ON THIS DOCUMENT IS THE PROPERTY OF BHARAT HEAVY ELECTRICALS LTD. IT MUST NOT BE USED DIRECTLY OR INDIRECTLY IN ANY WAY DETRIMENTAL TO THE INTEREST OF THE COMPANY.

REV 01	DATE 27.11.85	ALTD: S. O. L.	REV 02	DATE 08.01.2001	ALTD: G. S. J.
		CHD: S. O. L.			CHD: S. O. L.
		APPD: S. O. L.			APPD: S. O. L.
ZONE DIMENSION 147.5 CHANGED TO 170 AS PER SHOP REQUIREMENT AND CHEMICAL COMPOSITION ADDED.			MATERIAL X85Cr18Mo2V IS: 1570 WAS AISI 304.		

3.2 / 0.8 /

φ1086	-0.014
	-0.005



ITEM NO.	DESCRIPTION	MATL CODE	UNIT WT
		MATL SPEC	QTY
		IS: 1570	
		X85Cr18Mo2V	

EQPT: HIGH PRESSURE WATER STATION

	Bharat Heavy Electricals Ltd., SEAMLESS STEEL TUBE PLANT TIRUCHIRAPALLI-620 014	DRN	NAME	SIGN	DATE
		CHD	S. Pandian	[Signature]	21.12.81
		APPD	[Signature]	[Signature]	21 / 95
DEPT	GRADE OF UNTOL. DIM	SCALE	WEIGHT (KG)	REF TO ASSY / OLD DRG	ITEM NO.
CODE	C/M/F			B 113 051/P 4 1111 14 548	48
TITLE			CARD CODE	DRAWING NO.	REV.
STEM (PUMP UNLOADING DEVICE)			U 01	4-7-1111-01-01330	02

FIRST ANGLE PROJECTION (ALL DIMENSIONS IN MILLIMETERS)

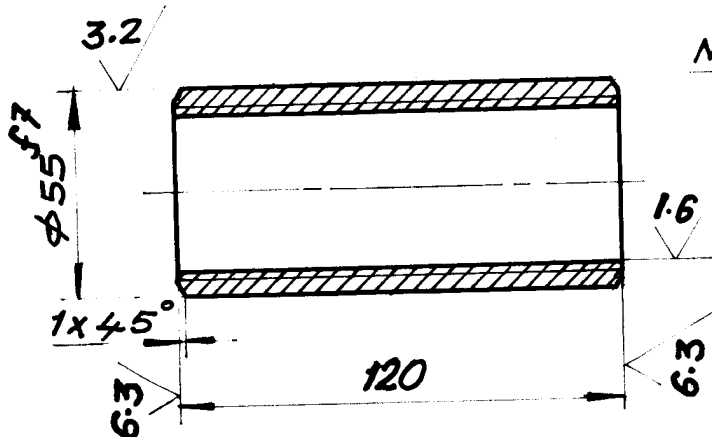
S 27-009

CAUTION: The information on this document is the property of BHARAT HEAVY ELECTRICALS LTD. It must not be used directly or indirectly in any way detrimental to the interest of the Company.

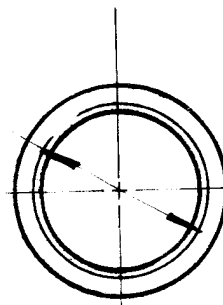
REV 01	DATE 23/02/86	ALTERED <i>[Signature]</i>
ZONE		CHECKED: J. JINLI
APPROVED <i>[Signature]</i>		
MATERIAL SPECIFICATION 45CB IS: 1075 WAS C45 IS: 2073		

$\phi 55 f7$ -0.030
-0.060

1.6 / 3.2 / 6.3




M 45 x 3



ITEM NO.	DESCRIPTION	45CB IS: 1075	MAIL CODE	UNIT WT.
			MATL SPEC	QTY

EQPT: PUSH BENCH

 Bharat Heavy Electricals Ltd., SEAMLESS STEEL TUBE PLANT TIRUCHIRAPALLI-620 014	DRN	NAME	SIGN	DATE
	CHD	V.S. MANIAN	V. Subramany	14-10-87
	APPD	A. AROCKIAH	J. Jinli	15-10-87
			<i>[Signature]</i>	15-10-87

DEPT	Grade of Untol Dim		SCALE	WEIGHT (Kg)	REF TO ASSY/OLD DRG	Item NO.
CODE	C/M/F		1:2	0.185	0-7-1127-06-00215	40

TITLE	CARD CODE	DRAWING NO.	REV
THREADED SLEEVE (COVER LOCKING SYSTEM)	U 01	4-7-1127-06-03594	01

Annexure-A

Important Note to Tenderers

This Tender is floated on TWO-BID System. Tenders are requested to submit their offers in TWO-BIDS (Part I: Un priced bid and Part II: Price Bid) separately in a sealed cover as follows.

1. **Part I: UN PRICED BID:** (Complete with technical & Commercial conditions as per enquiry including un priced copy of price schedule i.e. identical to part II with prices blanked and replaced by "Quoted")
The Tenderer should confirm their acceptance / comments to each and every clause of Annexure-A to Enquiry along with other commercial Terms & Conditions of Tender. In case any deviation is taken by the Tenderer from the Tender requirements, it is to be clearly indicated in the offer with reference to the particular clause. If such deviations are not explicitly indicated in the offer, it will be construed by BHEL that the Tenderer is complying with Annexure Clause(s), Commercial terms & conditions and other conditions in full. Any such non-compliance on these points, if raised / highlighted by the Tenderer, after opening the Price Bid, it will not be accepted by BHEL and the tender evaluation will be done based on the original offer submitted by them.
2. **Part II: PRICE BID:** Price (with break-up details wherever required) alone to be indicated. Price bid shall **not** contain any technical and commercial details.
3. **Both Un priced Bid and Price Bid is** to be submitted in a single envelop before 14.00 hours (Indian Time) on tender Due Date.
4. The **Unpriced Bid** shall be put in a separate sealed cover superscribed with Tender number, Tender Date & Tender Due Date and also the cover should be clearly marked with "UNPRICED BID".
5. The **Price Bid** shall be put in a separate sealed cover superscribed with Tender number, Tender Date & Tender Due Date & the cover should be clearly marked with "PRICE BID".
6. Both the individually enveloped **UNPRICED BID** and **PRICE BID** covers as mentioned above, have to be put in another single bigger cover clearly indicating Tender number, Tender Date & Tender Due Date at the top of the cover. This cover is to be addressed to Purchase Executive, Purchase Department, Seamless Steel Tube Plant (SSTP), BHEL, Tiruchirapalli-620014, India.
7. Unpriced Bid shall only be opened on the Tender Due Date mentioned in the Tender, in the presence of Tenderers / their Authorized Representative, who may like to be present for such opening. The price bid will NOT be opened on the date of tender opening.
8. After opening the Unpriced Bid, they shall be evaluated by BHEL for their suitability. BHEL shall hold discussions with the responded Tenderers on the Technical and Commercial terms and freeze the technical specifications. These frozen technical specifications will be communicated to responded tenderers.
9. BHEL shall offer opportunity to the responded and technically / commercially suitable Tenderers, to submit their latest Price Bid in line with the frozen technical delivery conditions.
10. This latest Price Bid for the frozen technical specifications submitted by the Tenderers will be opened in the presence of those Tenderers who have submitted the latest Price Bid. Based on the latest Price Bid only, the ranking of the Tenderers shall be made and accordingly the Tender shall be finalized.

Annexure – C.
Commercial Conditions

Vendor Code:	Vendor Name:	
Tender No.:	Tender Date:	Tender Due Date:

Sl.No	Commercial Terms	Accepted
C1.	<u>Delivery Terms :</u> Free delivery at BHEL/SSTP Stores duly including Packing, Forwarding, Freight and Insurance charges	
C2.	<u>Payment :</u> 100% after 45 days after receipt and acceptance of materials by BHEL	
C3.	<u>LIQUIDATED DAMAGES:</u> It is clearly understood among the parties to the Contract that TIME IS THE ESSENCE OF THE CONTRACT . Therefore, the delivery of the goods specified in the Purchase Order shall be made within the time prescribed. Where the Seller supplies or despatches the goods, beyond the delivery period specified, and the Purchaser will have no obligation to accept the goods. If accepted, Liquidated Damages at the rate of 0.5% (Zero point five Percent) of the value of goods delayed, per week of delay, subject to a maximum of 10% (Ten Percent) or part thereof, will be levied without prejudice to any other relief or compensation due to the Purchaser under any other conditions of the Contract. <u>RISK PURCHASE:</u> Alternatively, the Purchaser, at his option, will be entitled to terminate the Contract and to purchase elsewhere at the risk and cost of Seller, either the whole of the goods or any part, which the Seller has failed to deliver or dispatch within the time stipulated as aforesaid or if the same were not available the best and nearest available substitute thereof. The Seller shall be liable for any loss, which the Purchaser may sustain by reason of such Risk Purchase(s), in addition to penalty at the rate mentioned in Clause No.06 above.	
C4.	<u>Delivery Period :</u> As per Enquiry schedule.	
C5.	<u>Validity – minimum 60 Days from the date of Tender Opening.</u>	
<u>Deviations if any (attach additional sheet, if required) :</u>		

Sl.No.	Commercial Terms	
C6.	Validity of Offer (Date)	
C7.	Excise Duty (including Cess) % (with Break up details)	
C8.	TVNAT / CST (%)	
C9.	Delivery Period (Days/Weeks/Months) Please refer the Enquiry.	
C10.	Other Cost (if any) - % (or) Rs.	
C11.	Are you Micro/Small/Medium Industry? (If YES, please furnish MSM Regn.No., along with a copy of MSM Certificate)	YES / NO MSM No. MSM Certificate enclosed(Yes/NO)

Signature with Date :

Respective procurement Groups shall incorporate the applicable conditions in the NIT for Indigenous and Imports separately.

Payment Term (Indigenous)	
If materials are receivable at Stores/Trichy <u>without PBG</u>	Payment term is 100% direct payment after 45 days from the date of receipt and acceptance of materials.
If materials are receivable at Stores/Trichy <u>with PBG</u>	Payment term is 100% direct payment after 45 days from the date of receipt and acceptance of materials and against 10% PBG valid for the warranty period.
Any deviation in the above payment term will attract loading as mentioned below. “Base rate of SBI (as applicable on the date of bid opening. Techno-commercial bid opening in case of two part bids) + 6% shall be considered for loading for the period of relaxation sought by bidders.	

Payment Term (Indigenous)	
If materials are receivable at Project Sites without PBG	Option-1: Payment term is 100% direct payment after 45 days from the date of dispatch against site acknowledgement Option-2: Payment term is 90% direct payment after 45 days from the date of dispatch against submission of dispatch documents and balance 10% against site acknowledgement. For this option -2, a loading of 2% on the 90% of the offered value shall be made.
If materials are receivable at Project Sites with PBG	Option-1: Payment term is 100% direct payment after 45 days from the date of dispatch against site acknowledgement and against 10% PBG valid for the warranty period. Option-2: Payment term is 90% direct payment after 45 days from the date of dispatch against submission of dispatch documents and 10% PBG valid for the warranty period and balance 10% against site acknowledgement. For this option -2, a loading of 2% on the 90% of the offered value shall be made.

To be incorporated in all NITs addressed to Indigenous Suppliers	Payment through Bank is not preferred. In case of Payment through Bank is opted by Supplier, BHEL prefers documents submission through bank with copy of LR and door delivery of Goods to Site/Stores with Consignee copy attached. In this case Loading will be 3% on the offered value. In case of Direct to Site (DTS), only 90% through bank will be considered.
	Offers of indigenous Suppliers with payment terms as LC/Advance Payment are liable for rejection.

Payment Term (Imports) - To be incorporated in all NITs addressed to Import Suppliers

BHEL Payment term is 100% payment on CAD basis after 45 days from the date of receipt of documents, specified in PO, at BHEL bank. Respective bank charges to respective account.

Any deviation in the above payment term will attract loading as mentioned below. “Base rate of SBI (as applicable on the date of bid opening. Techno-commercial bid opening in case of two part bids) + 6% shall be considered for loading for the period of relaxation sought by bidders.

In the case of Usance LCs the loading will be considered @ 1.5% on the offered Value.

For LC at sight the loading will be considered @ 3.5% on the offered Value.

Normally CAD at sight and Confirmed LCs are liable for rejection.

Liquidated Damages / Penalty - To be incorporated in all NITs addressed to both Indigenous and Import Suppliers

Liquidated damages shall be 0.5% of the total order value per week or part thereof subject to a maximum of 10% of the total order value.

For staggered delivery schedule, LD shall be 0.5% of the undelivered portion per week of the delay or part thereof subject to a maximum of 10% of the total order value.

Any deviation from the above LD clause, loading will be applied to the extent to which it is not agreed by the bidder (at offered value).

Guarantee / Warranty Period- To be incorporated in all NITs addressed to both Indigenous and Import Suppliers

Normally No deviation permitted and the deviated offers are liable for rejection.

Performance Bank Guarantee - To be incorporated in all NITs addressed to both Indigenous and Import Suppliers

Normally No deviation permitted and the deviated offers are liable for rejection.

To be incorporated in all NITs addressed to both Indigenous and Import Suppliers

BHEL will consider the ranking after the loading is applied as referred above wherever deviations are observed.

Certificate by Chartered Accountant

This is to Certify that M/S
(hereinafter referred to as 'company') having its registered office at
..... is registered under MSMED Act 2006, (Entrepreneur
MeMemorandum No (Part—II)..... dtd:.....,
Category:..... (Micro/Small)). (Copy enclosed).

Further verified from the Books of Accounts that the investment of the company as on
date as per MSMED Act 2006 is as follows:

1. **For Manufacturing Enterprises: Investment in plant and machinery** (i.e. original cost excluding land and building and the items specified by the Ministry of Small Scale Industries vide its notification No.5.0.1722(E) dated October 5, 2006:
Rs.Lacs
2. **For Service Enterprises: Investment in equipment** (original cost excluding land and building and furniture, fittings and other items not directly related to the service rendered or as may be notified under the MSMED Act, 2006:
Rs.Lacs

The above investment of Rs..... Lacs is within permissible limit of
RsLacs for Micro / Small (~~Strike off which is not applicable~~)
Category under MSMED Act 2006.

Date:

(Signature)

Name -

Membership number -

Seal of Chartered Accountant