

FOR OFFICIAL USE ONLY  
NOT FOR PUBLICATION

TENDERER'S COPY  
ORIGINAL COPY

## TENDER SPECIFICATION

TENDER NO. BHEL/ NR /SCT/ FRK / GEN STR/TRANSHIPMENT/622

FOR

**“Transhipment of Turbo Generator Stator of 500 MW unit from the railway wagon inside the power plant premises on to Hydraulic Trailers and its safe transportation to TG hall unloading point at 1 x 500 MW Unit-6, Farakka Super Thermal Power Project (FSTPP) at Farakka town of Murshidabad district of West Bengal”**

### PART I – TECHNICAL BID



**Bharat Heavy Electricals Limited**  
(A Govt. Of India Undertaking)  
**Power Sector – Northren Region,**  
**Plot No. 25 , Sector - 16A ,**  
**Distt. Gautam Budh Nagar, NOIDA – 201 301.INDIA**



ISO 9001-2000, ISO 14001 and  
OHSAS 18001 certified  
company  
SubContract and Purchase  
Deptt.

**Bharat Heavy Electricals Limited**  
(A Govt. Of India Undertaking)  
**Power Sector – Northren Region,**  
Plot No. 25 , Sector - 16A ,  
Distt. Gautam Budh Nagar, NOIDA – 201 301.INDIA  
Phone: 0091-0120-2515476 / 2515464 / 2515479  
Fax 091-0120-2515464 / 2515467  
Email: [sku@bhelpsnr.co.in](mailto:sku@bhelpsnr.co.in) / [swapan@bhelpsnr.co.in](mailto:swapan@bhelpsnr.co.in)

**TENDER NO. BHEL/ NR /SCT/ FRK / GEN STR/TRANSHIPMENT/622**

**IMPORTANT NOTE**

PURCHASER OF THIS TENDER DOCUMENT IS ADVISED TO CHECK AND ENSURE COMPLETION OF ALL PAGES OF TENDER DOCUMENT AND REPORT ANY DISCREPANCY TIMELY FOR CORRECTIVE ACTION, IF ANY, TO THE ISSUING AUTHORITY BEFORE THE BIDS ARE SUBMITTED. ORIGINAL COPY OF TENDER DOCUMENT COMPLETE IN ALL RESPECTS MUST BE SUBMITTED BACK AS PART OF THE BID WITHOUT WHICH THE SAME IS LIABLE TO BE REJECTED BY BHEL.

THIS TENDER SPECIFICATION ISSUED TO:

M/S-----

-----

-----

-----

**INDEX**

<b>Sl. No.</b>	<b>CONTENTS</b>	<b>PAGE</b>
1.	Tender Notice	4-7
2.	Tender Notice- Newspaper	8
3.	Procedure for submission of tender	9
4.	General Conditions of Contract (GCC)	Separate File
5	Special Conditions of Contract (SCC)-	10-30
6	Annexure – A, TECHNICAL PROCEDURE	31
7	Annexure-B, TECHNICAL REQUIREMENTS (Tenderer to furnish relevant details with the technical bid)	32-34
8	<b>Annexure-I, CERTIFICATE OF DECLARATION FOR CONFIRMING THE KNOWLEDGE OF SITE CONDITIONS</b>	35
9	<b>Annexure—II- NON-DISCLOSURE AGREEMENT</b>	36
10	ANNEXURE III - GENERAL TERMS AND CONDITIONS OF REVERSE AUCTION (RA)	37
11	<b>ANNEXURE – IV - FORMAT FOR NO DEVIATION CERTIFICATE</b>	38
12	<b>ANNEXURE – V, Authorization of representative who will participate in the on line Reverse Auction Process</b>	39
13.	<b>ANNEXURE – C, Unprised Rate Schedule</b>	40-43



ISO 9001-2000, ISO 14001 and  
OHSAS 18001 certified  
company  
SubContract and Purchase  
Deptt.

**Bharat Heavy Electricals Limited**  
(A Govt. Of India Undertaking)  
**Power Sector – Northren Region,**  
Plot No. 25 , Sector - 16A ,  
Distt. Gautam Budh Nagar, NOIDA – 201 301.INDIA  
Phone: 0091-0120-2515476 / 2515464 / 2515479  
Fax 091-0120-2515464 / 2515467  
Email: [sku@bhelpsnr.co.in](mailto:sku@bhelpsnr.co.in) / [swapan@bhelpsnr.co.in](mailto:swapan@bhelpsnr.co.in)

**TENDER NOTICE**

Sealed tenders are invited from the contractors fulfilling qualifying requirements for the works of “Transhipment of Turbo Generator Stator of 500 MW unit of Size Length 8.830Mtr, Width 4.100Mtrs, Height 4.120Mtr, Net Weight 265 MT, gross Weight 275MT supported through a carrier beam of appx. size Length 31.120mtr, Width 0.860Mtr, Height 0.970Mtr and Weight 50MT from the railway wagon inside the power plant premises on to Hydraulic Trailers and its safe transportation to ‘A’ row near TG hall unloading point at 1 x 500 MW Unit-6, Farakka Super Thermal Power Project (FSTPP) at Farakka town of Murshidabad district of West Bengal”.

TENDER NO. BHEL/ NR /SCT/ FRK / GEN STR/TRANSHIPMENT/622

**QUALIFYING REQUIREMENTS:**

- 1.0 Tenderer who wish to participate should have carried out at least one work of handling or transportation of Turbo Generator Stator of 195 MW unit ‘OR’ higher rating unit during last seven years.
  
- 2.0 Tenderers should also have an average annual turnover of minimum of Rupees 75 lacs (Rupees Seventy five lacs only) based on the audited accounts of last three financial years (2005-06, 2006-07 & 2007-08). Bidders shall submit audited balance sheets and profit & loss account in support of this.

**NOTES:**

- (i) The Tender Documents comprise of following;
  - (a) General Conditions of Contract
  - (b) Special Conditions of Contract, Tender Notice, Project Synopsis etc.
  - (c) Rate Schedule
  - (d) Drawings
- (ii) Tender Documents with complete details are hosted on BHEL's web page [www.bhel.com](http://www.bhel.com). Bidder(s) intending to participate may download the tender document from the web site. Bidder(s) downloading the tender documents from the web site, shall remit Rs.1000/- (Rupees One thousand only) in the form of crossed demand draft (non-refundable), in favour of BHEL, NOIDA along with their offer.
- (iii) Bidder(s) can also purchase hard copy of tender documents from this office. Tender documents (non transferable) will be issued on all working days between 09.30 Hrs. to 12.30 Hrs within the sale period i.e **upto 22.04.2009** on payment of Rs.1,000/- (non-refundable) either in cash or by crossed demand draft in favour of BHEL, NOIDA. Request for issue of tender document should clearly indicate Tender No. and work.
- (iv) Tenders must be submitted to the AGM / SCP / PSNR (Room No. 104) at the address given above **latest by 22.04.2009** before opening of technical bids commences. Technical bids shall **be opened at 15.30 Hrs. on 22.04.2009**. Tenders received after the due date & time shall be liable to be summarily rejected.
- (v) Earnest Money Deposit (EMD): Refundable, Non-interest bearing **EMD of Rs 1,50,000/-** shall be deposited by Account Payee Pay Order 'OR' Demand Draft in favour of " Bharat Heavy Electricals Limited" payable at Delhi/NOIDA . Those bidders who have already deposited ' One Time 'EMD' of Rs. 2,00,000/- with BHEL, PSNR, NOIDA need not submit EMD with the present tender.
- (vi) Tenders not accompanied with Full Earnest Money Deposit, as indicated above, will not be considered.
- (vii) All corrigenda, addenda, amendments and clarifications to this Tender will be hosted in this web page and not in the newspaper. Bidders shall keep themselves updated with all such amendments.
- (viii) BHEL reserves the right to accept or reject any or all tenders without assigning any reason whatsoever.
- (ix) BHEL takes no responsibility for any delay/loss of documents or correspondences sent by courier/post.

- (x) **BHEL reserves the right to go for a Reverse Auction instead of Opening the submitted sealed bid, which will be decided after technical evaluation. As such, the bidders should submit their best prices in the 'Sealed Price Bid'. However, bidders are required to confirm their acceptance of "General terms and conditions" governing RA specifically in their technical bid. The "General terms and conditions" governing RA are given in the SCC of the NIT.** Bidders are also required to furnish following details in their techno-commercial bid, for this purpose (RA).

Authorization of representative who will participate in the on line Reverse Auction Process;

1. Name and Designation of official
2. Postal Address (Complete)
3. Telephone Nos. (Land line & Mobile both)
4. FAX No.
5. E-mail address
6. Name of Place/State/Country, wherefrom he will participate in the RA

- (xi) Unsolicited rebate/discount shall not be accepted after bid opening.
- (xii) Bids, once submitted, shall not be returned.
- (xiii) Purchase Preference will be given to CPSUs as per Govt. Guidelines.

**SPECIAL INSTRUCTIONS TO BIDDERS:**

The bidders must submit their bids as requested in a sealed cover prominently superscribed the Tender Specification number, due date and time of submission as mentioned in the Tender Notice.

The following information shall be furnished by the bidder along with their offer (Technical Bid Cover)

01. Details of previous experience during the past seven years indicating contract value, duration, completion period and present engagement as per GCC.
02. Organization structure of the company as per G.C.C.
03. Financial status of the firm enclosing balance sheet and profit and loss account for the past 3 years and certificate from the Company's banker as per GCC.
04. Turnover of the company in last 3 financial years in construction / ODC transportation works.
05. Latest Income Tax Clearance certificate.
06. BIO DATA of key personnel presently in the roles of the company and proposed site organization for carrying out the work including deployment of Engineers and Supervisors.
07. Declaration sheets as per Appendix of Tender Specification.

08. Checklist and schedule of General particulars as per Appendix in G.C.C.
09. T & P owned / deployment details as per G.C.C.
10. Technical manpower deployment details as per G.C.C.
11. Other relevant details as per G.C.C. and checklist.
  
12. A DECLARATION SHEET INDICATING THAT THERE IS NO DEVIATION IN TENDER CONDITIONS BIDDERS MAY FURTHER NOTE THAT THIS DECLARATION IS A PREREQUISITE FOR BHEL TO CONSIDER THEIR BIDS. BIDS SUBMITTED WITHOUT "NO DEVIATION DECLARATION" WILL BE REJECTED BY BHEL.
13. Technical Bid Cover should be submitted along with all relevant information and price bid cover should be submitted separately superscripting very clearly the tender number - Price Bid on the envelope.
14. SAFETY PLAN- Bidders may further note that the submission of safety plan is Prerequisite for BHEL to consider their bids.
15. **Status of T. G. stator depatch:** dispatched on 29<sup>th</sup> jan 2009 from Hardwar
16. **Transshipment and location:** locowagon inside Farakka plant
17. **Details of documents to be furnished along:** As per requirement of technical bid with tender

Thanking you,

Yours faithfully,  
For BHARAT HEAVY ELECTRICALS LTD.,

**DGM / SCP**



ISO 9001-2000, ISO 14001  
and OHSAS 18001 certified  
company  
SubContract and  
Purchase Deptt.

**Bharat Heavy Electricals Limited**  
(A Govt. Of India Undertaking)  
**Power Sector – Northren Region,**  
Plot No. 25 , Sector - 16A ,  
Distt. Gautam Budh Nagar, NOIDA – 201 301.INDIA  
Phone: 0091-0120-2515476 / 2515464 / 2515479  
Fax 091-0120-2515464 / 2515467  
Email: [sku@bhel.com](mailto:sku@bhel.com) / [swapan@bhel.com](mailto:swapan@bhel.com)

**DOMESTIC NOTICE INVITING TENDER**

**LAST DATE OF SALE : 22.04.2009      DATE OF OPENING : 22.04.2009**

**TENDER NO. BHEL/ NR /SCT/ FRK / GEN STR/TRANSHIPMENT/622**

Sealed tenders are invited from the contractors fulfilling qualifying requirements for the works of Transhipment of Generator Stator of 500 MW unit from the railway wagon on to Hydraulic Trailers and its safe transportation to TG hall bay at 1 x 500 MW Unit-6, Farakka Super Thermal Power Project, Distt. Murshidabad, West Bengal.

**NOTES**

1. Purchase Preference will be given to CPSU as per Govt. Guidelines.
2. Please visit our website at [www.bhel.com](http://www.bhel.com) for details.

**DGM / SCP**

**Bharat Heavy Electricals Limited**  
(A Govt. Of India Undertaking)  
**Power Sector – Northren Region,**  
Plot No. 25 , Sector - 16A ,  
Distt. Gautam Budh Nagar, NOIDA – 201 301.INDIA

**PROCEDURE FOR SUBMISSION OF SEALED TENDERS:**

The tenderers must submit their tenders as required in **two parts** in separate sealed covers **prominently superscribed as Part-I Technical bid and Part-II ,Price bid** also indicating on each of the cover tender specification no., date and time as mentioned in tender notice.

**TECHNICAL BID (COVER-I)**

Except **Price bid Part-II**, complete set of tender document consisting of General conditions of Contract, “Technical specification & Special terms and condition” ( Part-I) issued by BHEL shall be enclosed in **Part I Technical Bid only**. All schedules, data sheets and details called for in the specification shall also be submitted along with technical bid. All details / Data / Schedules including offer letter duly signed and stamped are to be **submitted in duplicate**.

**PRICE BID (COVER-II)**

Tenderers may please note that price bid is **to be submitted only in original copy** of Tender i.e. Price bid (Part-II) issued by BHEL and no duplicate copy of same is required.

These Two separate covers i.e. cover I & II shall together be enclosed in a **third envelope (Cover-III)** and this sealed cover shall be superscribed with tender specification No., due date, time and submitted to officer inviting tender as indicated in tender notice on or before due date as indicated.

**SPECIAL CONDITION OF CONTRACT**

<b>CLAUSE NO</b>	<b>DESCRIPTION</b>
1.0	PROJECT SYNOPSIS
2.0	SITE VISIT
3.0	NAME OF WORK
4.0	SCOPE OF WORK
5.0	PROHIBITION OF SUB-LETTING
6.0	TOOLS & PLANTS
7.0	ITEMS TO BE SUPPLIED BY BHEL AT POINT OF UNLOADING FROM WAGON ON RETURNABLE BASIS
8.0	INDEMNITY
9.0	FORCE MEJURE CLAUSE
10.0	COMPLETION PERIOD :
11.0	LIKELY TIME OF EXECUTION
12.0	CERTIFICATE TOWARDS COMPLETION
13.0	TAXES, DUTIES ETC
14.0	TERMS OF PAYMENT
15.0	MOBILISATION ADVANCE
16.0	PERFORMANCE BOND
17.0	PRICE VARIATION CLAUSE
18.0	DETENTION CHARGES
19.0	EXTRA WORK
20.0	CONTRACT PRICE
21.0	PENALTY/ LIQUIDATED DAMAGE
22.0	OTHER TERMS
23.0	FACILITIES TO BE PROVIDED BY BHEL / CONTRACTOR

These special conditions shall be construed as part of tender document and shall be read along with general conditions of contract (GCC) and other volumes of tender. In case of any conflict or inconsistency between GCC, other volumes and these special conditions contract (SCC), the same shall be brought out by the bidder in writing to BHEL for clarification with stipulated date & before due date of submission of offer, failing which most stringent interpretation/ clause in favour of BHEL shall be adopted and the same shall be binding to the bidder.

**CLAUSE DESCRIPTION  
NO**

**1.0 PROJECT SYNOPSIS**

1.1 National Thermal Power corporation ltd. has entrusted BHEL for Design, Engineering, Manufacturing, Supply, Installation, Testing and commissioning of Steam Generator, Turbine Generator packages along with their auxiliaries for 1 x 500 MW for Farakka Super Thermal Power Project, Stage-III which is located near Farakka town in Murshidabad district of West Bengal. The Stage-III of the Project shall comprise of one (1) unit of 500 MW. Stage-I & Stage-II of the project comprises of three (3) units of 210 MW each and two (2) units of 500MW each are presently under commercial operation. The ultimate capacity of the project will be 2130 MW (Stage-I, 3x210 MW + Stage-II, 2x 500 MW + Stage-III, 1X500 MW).

The nearest railhead New Farakka Railway Station of Eastern Railway is approximately 2.0 km away from the project site. Maldah is the nearest major towns located within 50Km distance from the project site. The nearest commercial airport is Kolkata and located at a distance of approximately 300-km. New Farakka Railway station is around 300 Km away from Howrah.

**2.0 SITE VISIT**

Contractor should visit site and acquire full knowledge & information about site conditions. The bidder must visit site, to acquaint themselves with the conditions prevailing at site and in & around the plant premises, together with all statutory, obligatory, mandatory requirements of various authorities before submission of bid.

The contractor must have first hand information about the location, availability of facilities and also to make a road survey and finalize the route and their scope for the work to be carried out before quoting. The contractor shall also furnish along With tender the detailed arrangement of transportation proposed by them along with route map and necessary write up with detailed dimensional sketch for assessment/approval of BHEL. They shall also furnish their experience in handling such jobs with necessary link-up data along with the offer.

**3.0 NAME OF WORK**

Unloading from BHEL's special railway wagon within project premises, loading the same on hydraulic trailer, transportation upto unloading bay (in front of A-row of power house for further lifting for installation of 500 MW generator stator for 1x500 MW unit-6 at Farakka Super Thermal Power Project (FSTPP) at Farakka town of Murshidabad district of West Bengal".

#### 4.0 SCOPE OF WORK

4.1 Transhipment of Turbo Generator Stator of 500 MW unit of approximate Size Length 8.830Mtr, Width 4.100Mtrs, Height 4.120Mtr, Net Weight 265 MT and gross Weight 275MT supported through a carrier beam of appx. size Length 31.120mtr, Width 0.860Mtr, Height 0.970Mtr and Weight 50MT from the railway wagon inside the power plant premises on to Hydraulic Trailers and its safe transportation to 'A' row near TG hall unloading point " at 1 x 500 MW Unit-6, Farakka Super Thermal Power Project (FSTPP) at Farakka town of Murshidabad district of West Bengal". The Generator stator has been dispatched by BHEL/ Hardwar unit through special wagon from Hardwar to a point within the project premises away from A-row of the Farakka Power house. All the works required for the Transhipment work are in the scope of this contract whether mentioned or not indicated but are required for the execution of entire scope of work are to be carried out by the contractor within the awarded value of this contract. The scope of work is further detailed as below.

4.2 Scope of work under this tender broadly covers unloading of 500 MW TG stators from BHEL's special wagon at a point within project premises, loading the same on hydraulic trailer, transportation upto A-row of power house, supervision for unloading of respective stators in front of A row of power house.

4.3 The brief scope of this contract Includes, but not limited to, receipt of the consignment at Farakka plant railway siding or any other location inside the plant, moving it to the unloading area after detaching all the empty wagons including the brake van and handing over to Railway, making required minor corrections/ civil works in approach road for transportation of the consignment, unloading the stator from the wagon and loading on the trailer as specified In this tender drawing, transporting near to TG hall at site for unloading, near the A 'row of power house below the strand jack device hook, for lifting to Its position. **The foundation pads are to be designed by the contractor, for max. load on each pad shall be 125T spread over actual loading area of 1.6 SqM or as decided during execution at site. The detailed design and drawing provided by contractor shall be duly vetted and accepted by BHEL.**

Design and casting of civil foundation including all required materials for jacking / support and required area development near railway Transhipment point **shall be carryout based on the approved drawings provided by the contractor for the unloading and Transhipment of Generator stator. The execution of this civil work near rail link receiving point shall be paid as per the actual execution of items of rate schedule. Contractor shall have**

**to execute the same when ever during the execution asked by BHEL engineers at site on the rates awarded in the rate schedule.**

- 4.4 The formal clearance for using the railway yard facility shall be obtained from M/s NTPC by BHEL. However interacting with M/s NTPC / BHEL for identifying area for unloading permission for taking materials, tools & plants, contract labours, Trailers etc., obtaining necessary clearance and permission for carrying civil works, approach roads, finalizing route within plant at unloading point to site is in the scope of the contractor.
- 4.5 The tenderer has to develop the entire area at Farakka plant Transhipment location for the free movement of the Trailers as mentioned in 4.3 above and It may also be required that the tenderer has to strengthen the existing bridges, making by pass roads / tramps, extending and altering the straight/curved roads, cutting of trees etc., which are to be carried out by the contractor with In the quoted rate. The same shall have to be made good after completion of the work. Obtaining required permission from local/ government authority and fees, if any, payable is in the scope of contractor and shall carry out within the quoted rate.
- 4.5 The Generator stator is cylindrical consignment weighing 265 MT and the CG lies at is center for transportation purposes. Jacking must be done only on the foot pads provided on both sides of the stator at a distance of 1100 mm below the centre line.
- 4.6 The Rail Transport - A 24 axle central carrier beam type special wagon of 280MT carrying capacity Is used to transport this consignment. The loading arrangement consists of a carrier beam of the rail wagon, which is passing through the bore of the stator, Is fixed at the ends to two sets of wagon bolsters, each consisting of 12 axle bogie combinations, The load of the stator Is transferred to carrier beam through the transport end shields mounted on both ends of the stator bore. The carrier beam is of 31.12 metres long and weighs about 50MT, will have a deflection of 160 mm at the bottom under loaded condition.
- 4.7 The arrangement of the carrier beam of rail wagon or special fixtures for transportation may be used for road transport. The Transhipment at Farakka site shall be done by the use of hydraulic jacks eliminating the use of large capacity cranes. The selection of suitable road trailer with required no of axles (Suitable to the existing bridges / road conditions en-route), the prime mover design of swiveling bolsters with suitable top plate on road trailer for fixing the carrier beam loaded with stator, load spreader on trailer with necessary lateral & longitudinal locking to arrest displacement of load, route survey, sanctions necessary civil works required for loading / unloading / transport shall be engineered and carried out by the contractor.

- 4.8 Special transport equipments such as transport end shields with roller blocks, stopper supports and support beam assembly etc are to be sent back to BHEL Hardwar for further use by road transport. All the accessible returnable materials available till the end of contract are to be packed and returned to BHEL stores as per the instructions of BHEL site for further safe transport to BHEL/Hardwar within the scope of this contract. After the successful completion of Transhipment and unloading of stator at Farakka TPS, the carrier beam to be loaded and secured on special wagons of BHEL for onward dispatch to BHEL HARIDWAR within the awarded rates.
- 4.9 The work (for respective units each) broadly includes following activities.
- 4.9.1 Unloading of stator from special wagon (Typical arrangement shall be as per enclosed drawing 0-139-38-01022C).
- 4.9.2 Reassembly of wagon with carrier beam.
- 4.9.3 Loading of stator on trailer (Typical arrangement shall be as per enclosed drawing 2-139-38-01070).
- 4.9.4 Transportation of TG stator on hydraulic trailer from designated point to unloading bay of unit 6 at 1x500 MW Farakka site at a place as advised by BHEL engineer is under the scope of this contract.
- 4.9.5 Contractor shall be associated for supervision of unloading of the stators in front of A-row of power house. However, necessary manpower and other resources assistance for the unloading shall be provided by BHEL's other contractor.
- 4.9.6 After the completion of the job in all respects the tenderer must demolish the required civil works / any other platforms made for handling the stator at Farakka work area and handover the work spot to Farakka project In good conditions as it was prevailing Prior to start of work at his cost within the awarded rate.
- 4.10 **SUGGESTED SEQUENCE OF OPERATION**  
Suggested sequence of operation for (a) unloading of TG stator from special rail wagon; (b) loading of stator on hydraulic trailer (c) unloading of stator from trailer at site and (d) return of stator handling beam.
- 4.11 **INFORMATION SYSTEM**  
The bidder shall keep close liaison with the office of Construction Manager, BHEL, Farakka site during unloading/ loading/ transit of the consignment. Feed back report/ status of the consignment should be informed periodically once a day to Construction Manager, BHEL, Farakka site. Bidder's representatives on the vehicle shall carry mobile for communication and also give location of vehicle.
- 4.12 **GENERAL CONDITIONS**  
Route, Survey, Permit etc.: It is the responsibility of the carrier to have made a prior survey of the route over which the over dimensional consignment has to be transported to ensure the technical feasibility of the consignment to be safely carried over that route and to clear while transporting any temporary obstructions as may arise with the permission of the authorities involved. All expenses incurred in this connection have to be borne by them. If however any damage to private/public property arises in the course of transportation by the

carrier's vehicle/consignment, the carrier alone shall be liable for its indemnification. The provision of a pilot before the main vehicle would also be at carrier's cost. In case due to unforeseen problems original route has to change the tenderer shall follow the alternate route without any additional cost. Lashing and securing of the consignments for transportation will be the responsibility of the contractor. All the safety precautions required in transportation such as lashing, providing of red flags/light, pilot, escort etc. As may be required is the responsibility of the carrier and should be ensured. The necessary supports required for supporting overhanging portion are to be done by the carrier. Any other supporting materials provided by BHEL are to be returned or otherwise the cost of the same will be deducted from the carrier's Bills.

- 4.12.1 Unloading from wagon and loading of consignment at the designated point within the project premises is included in the scope of work. Necessary supervision for unloading at a point near A-row of the power house in transformer bay is also included in the scope of the contract.
- 4.12.2 All relevant authorization from competent authorities (for safe transportation of the consignments) shall be obtained by the bidder at his own cost. Any contingency arising in this respect shall be the responsibility of the bidder. The bidder shall be responsible for safe unloading/ loading. Any mishap, accident, damage to any third party (person/ property) enroute and consequences thereof including legal complications, if any shall be the responsibility of bidder and BHEL will stand indemnified.
- 4.12.3 The tenderer shall arrange necessary vehicles as specified in the contract for the transportation of consignments. The contractor shall at their own expense maintain the said vehicles in good condition and shall duly apply for and obtain all licences / permits etc. Necessary under the rules in force and, promptly pay all registration, License or other fees and all taxes payable in respect of the said vehicles. (I.E.) the vehicle shall have valid permits for carrying the load and necessary road permits from the concerning authorities enroute shall be obtained by the contractor. The contractors shall also appoint and provide at their own cost for each vehicle a driver, assistant and other staff as may be necessary. If demanded by BHEL officials the original R.C. Book and driving licence shall be produced for verification.
- 4.12.4 The bidder will be responsible of compliance of various Pollution Control Regulations of State/ Central Govt or Constitutional Regulatory Authority as applicable to trailer/ puller and other vehicles deployed for safe transportation of consignments.
- 4.12.5 The contract as entered between BHEL and the successful bidder shall in no way, nullify, reduce, mitigate or absolve the bidders of any responsibility, obligation or liability that may devolve upon them under the Carriers Act 1965 (as amended from time to time).
- 4.12.6 The bidder shall carry materials/ packages/ consignments in vehicles suitably equipped for the same. He shall take all due care for protecting the consignments from adverse weather condition and be responsible for their safe and sound condition during his possession. The bidder shall take all due care

- of consignments and shall provide all packing and lashing at his own cost. Electrodes/ angles/ welding facility or any other materials/ tools, if required, will be arranged by the bidder. Any problem of transportation arising due to rainy season shall be taken care of by the bidder for smooth & safe transportation.
- 4.12.7 Once the materials are accepted by the bidder, it shall be deemed to have been handed over by the consignor in good condition, unless otherwise pointed out on the GR at the time of taking delivery from the consignor at the loading point.
- 4.12.8 The bidder and his authorized agents shall comply with the security regulations of BHEL/ Hardwar and consignee premises at destination in the matter of entry/ exit and for the movement inside the premises of BHEL/ project sites. The bidder shall ensure that all employees/ persons engaged/ authorized by him for carrying out the work, behave properly with the company's officers/ staff. In the event of any misbehavior, reported by the officer concerned of BHEL, the bidder shall immediately withdraw such employee/ persons from the work.
- 4.12.9 BHEL shall insure the consignments with the underwriters/ insurance company. This shall however, not absolve the bidder of any responsibility of safe and proper transportation of the goods to the proper destination of his liability to compensate BHEL for the damages/ shortages in respect of the consignments.
- 4.12.10 Necessary road work as required for the subject job shall be in the scope of BHEL. However, the successful bidder shall undertake the route survey and furnish the requirements viz. strengthening of the road etc immediately of LOI.
- 4.12.11 All the safety precautions required for safe transportation such as lashing and securing the consignment, providing of red flags, lights, pilot/ escorts etc shall be the responsibility of the bidder.
- 4.12.12 While accepting the consignments for transportation, the bidder should ensure that all necessary documents like excise duty gate pass, State Road Permit or any other forms, as applicable, invoice, challan etc required to be shown at various check posts enroute are collected by them so that the consignments are not detained enroute on this account. Any detention on this account will be carriers responsibility.
- 4.12.13 Trans-shipment will not be allowed. However in case, need arises, axle replacement may be permitted after prior approval from BHEL Hardwar at the bidder's cost.
- 4.12.14 The rates agreed between BHEL and the bidder will remain firm.
- 4.12.15 Technical experts of the bidder shall accompany the consignment. Further bidder will have to provide facility of escort without extra cost, if required by BHEL
- It is the responsibility of the tenderer to carry out all the operations as per contract without causing any damage to the stator & wagon. The cost of damage if any due to your negligence will be deducted from the tenderer bills. The evaluation of the cost of damage by our representative will be final and binding.

- 4.12.16 The bidder will also deliver the documents given by the Traffic department of BHEL like Packing list, Excise Duty Gate Pass, duplicate for bidder copy Invoice etc. to the consignee along with the delivery of the Consignment.
- 4.12.17 Any changes in the relevant Motor Vehicle Act announced by Govt. of India, Ministry of Surface & Transport from time to time will be applicable to this contract and such changes shall be binding on both BHEL & bidders. Consequent additional financial direct burden if any on the bidder will be decided mutually.
- 4.12.18 **N. A.**
- 4.12.19 Tax deduction at source shall be applicable as per Government Rules from time to time.
- 4.12.20 No idle charge of manpower & equipment is permissible in this work contract.
- 4.12.21 **Rates shall be firm and inclusive of all charges for handling, transportation including civil works design and drawings of unloading pedestals at unloading point & other related works alongwith all required materials for civil works and other tools and plants and fixtures which may be required statutorily or otherwise for safe transportation of the consignments upto destination.**
- 4.12.22 **BHEL shall provide following fixtures/ items for the execution of tendered work.**
- |                                   |                |
|-----------------------------------|----------------|
| 1. Fixture of Road Transportation | 1 Set ( 4 nos) |
| 2. Items for above fixtures.      |                |
| 2a Bush & Washer                  | 8 Nos. each    |
| 2b. Bolt M42X180                  | 8 Nos          |
| 2c. Plate 50X80X80 mm             | 8 Nos          |
| 2d. Plate 40X100X100 mm           | 16 Nos         |
| 2e. Nut M42                       | 8 Nos          |
| 2f. Washer M42                    | 8 Nos          |
- 4.12.23 The Transhipment of stator shall be done by using above fixture provided by BHEL. All other T & P and fixtures and other materials what so ever shall be arranged by the contractor within the awarded rates.
- 4.12.24 In addition to the local laws and regulations, bidder shall also comply with the Minimum Wages Act and the Payment of Wages Act (both of the Government of India) and the rules made there under in respect of its labour currently employed on or connected with the contract.
- 4.12.25 No material brought to the site shall be removed from the site by bidder without the prior written approval of BHEL.
- 4.12.26 Bidder shall co-operate with all other bidders or tradesmen of BHEL, who may be performing other works on behalf of BHEL and the workmen who may be employed by BHEL and doing work in the vicinity of the works under the contract. Bidder shall also arrange to perform his work as to minimise, to the maximum extent possible, interference with the work of other bidders and their workmen. Any injury or damage that may be sustained by the employees of the

other bidders and BHEL, due to bidder's work shall promptly be made good at his own expense. BHEL shall determine the resolution of any difference or conflict that may arise between bidder and other Bidders or between bidder and the workmen of BHEL in regard to their work. If the work of bidder is delayed because of any acts of omission of another bidder, bidder shall have no claim against BHEL on that account other than an extension of time for completing his works.

- 4.12.27 Employer shall have full access to visit bidder's site at any time for inspection and surveillance checks.
- 4.12.28 BHEL shall be notified promptly by bidder of any defects in the other bidder's works that could affect bidder's work. BHEL shall determine the corrective measures if any, required to be rectified this situation after inspection of the works and such decisions by BHEL shall be binding on bidder.
- 4.12.29 Bidder shall adhere to the disciplinary procedure set by BHEL in respect of his employees and workmen at Site. BHEL shall be at liberty to object to the presence of any representative or employee of bidder at the Site, if in the opinion of BHEL such employee has misconducted himself or is incompetent, negligent or otherwise undesirable then bidder shall remove such a person objected to and provide in his place a competent replacement.
- 4.12.30 Bidder shall keep BHEL informed in advance regarding his field activity plans and schedules for carrying out each part of the works. Any review of such plan or schedule or method of work by BHEL shall not relieve bidder of any of his responsibilities towards the field activities. Such reviews shall also not be considered as an assumption of any risk or liability by BHEL or any of his representatives and no claim of bidder will be entertained because of the failure or inefficiency of any such plan or schedule or method of work reviewed. Bidder shall be solely responsible for the safety, adequacy and efficiency of plant and equipment and his material management methods.
- 4.12.31 Bidder shall have complete responsibility for the conditions of work site including the safety of all persons employed by him and all the properties under his custody during the performance of the work. This requirement shall apply continuously till the completion of the contract and shall not be limited to normal working hours. The construction review by BHEL is not intended to include review of Bidder's safety measures in, on or near the Work-Site, and their adequacy or otherwise.
- 4.12.32 Bidder shall have total responsibility for protecting his works till it is finally issued from his custody to respective erection agencies. No claim will be entertained by BHEL or the representative of BHEL for any damage or loss to the materials under custody of Bidder' and bidder shall be responsible for complete restoration of the damaged works to original conditions to the satisfaction of BHEL's engineer. Should any such damage to bidder's Works occur because of other party not being under his supervision or control, bidder shall make his claim directly with the party concerned. If disagreement or conflict or dispute develops between bidder and the other party or parties concerned regarding the responsibility for damage to the materials etc under Bidder's custody the same shall be resolved as per the provisions of the as

specified at relevant clause of this tender. Bidder shall not cause any delay in the repair of such damaged works because of any delay in the resolution of such disputes. Bidder shall proceed to repair the work immediately and no cause thereof will be assigned pending resolution of such disputes. For security refer relevant clause.

- 4.12.33 In case BHEL becomes liable to pay any wages or dues to the labour or any Government agency under any of the provisions of the Minimum Wages Act, Workmen Compensation Act, Contract Labour Regulation Abolition Act or any other law due to act of omission of bidder, BHEL may make such payments and shall recover the same from bidder's bills with BHEL's overheads.
- 4.12.34 Bidder shall have total responsibility for all equipment and materials in his custody at stores for loose, and/ or semi-assembled items. Bidder shall make suitable security arrangements to ensure the protection of all materials, equipment and works from theft, fire, pilferage and any other damages and loss. All materials of bidder shall enter and leave BHEL site only with the written permission of BHEL in the prescribed manner. However, deployment of regular security personnel will be done by BHEL at stores/ storage area.
- 4.12.35 In case where the performance of the material handling work by bidder affects the operation of the system facilities of BHEL, such material handling work of bidder shall be scheduled to be performed only in the manner stipulated by BHEL and the same shall be acceptable at all times to bidder. BHEL may impose such restrictions on the facilities provided to bidder such as electricity, etc as he may think fit in the interest of BHEL and bidder shall strictly adhere to such restrictions and co-operate with BHEL.
- 4.12.36 Bidder shall bring to site all equipment, components, parts, materials, including construction equipment, tools and tackles for the purpose of the works under intimation to BHEL. All such goods shall, from the time of their being brought vest in BHEL, but may be used for the purpose of the Works only and shall not on any account be removed or taken away by bidder without the written permission of BHEL. Bidder shall nevertheless be solely liable and responsible for any loss or destruction thereof and damage thereto.
- 4.12.37 BHEL shall have a lien on such goods for any sum or sums, which may at any time, be due or owing to him by bidder, under, in respect of or by reasons of the contract. After giving a 15 (fifteen) days notice in writing of his intention to do so, BHEL shall be at liberty to sell and dispose off any such goods, in such manner as he shall think fit including public auction or private treaty and to apply the proceeds in or towards the satisfaction of such sum or sums due as aforesaid.
- 4.12.38 After the completion of the works, bidder shall remove from site under the direction of BHEL the materials such as construction equipment, erection tools and tackles, scaffolding etc. with the written permission of BHEL. If bidder fails to remove such materials, within fifteen (15) days of issue of a notice by BHEL to do so then BHEL shall have the liberty to dispose off such materials and credit the proceeds thereto to the account of bidder.

**5.0 PROHIBITION OF SUB-LETTING**

The bidder is not allowed to pass responsibilities connected with the transportation to other agency/ bidder. The bidder after entering into contract would not be permitted to arrange transport of consignments entrusted to him through another bidder, except with the written permission of BHEL under exceptional circumstances. However, hiring of vehicles and services from other agencies/ bidders is permitted but the onus of safe and timely transportation of the consignment rests with the bidder. The bidder shall not sublet or transfer the contract or any part thereof, which will tantamount to termination of the contract and forfeiture of security deposit and BHEL will also be entitled to claim all damages/ losses/ extra expenditure involved from the bidder as per relevant clause.

**6.0 TOOLS & PLANTS**

- 6.1 All the Tools and Plants such as Hydraulic jacks including 150T/175T telescopic hydraulic jacks, pedestals, packers, fixtures, cranes etc. for facilitating removal of carrier beam and handling of stator, which ever are not supplied along with Generator stator in the wagon, shall have to be arranged by contractor as a scope of this contract. BHEL shall provide fixtures for handling work supplied by BHEL Hardwar as stated in CC 4.12.22 all other Tools and plants shall be the responsibility of contractor to arrange for the work within the awarded price.
- 6.2 A Wheeled Support Trolley adequately designed and fabricated by contractor, is to be provided for resting of the Wagon Carrier beam at one end of Stator to prevent touching of the same with stator core and consequent damages. Hydraulic jacks & trolley will have to be serviced including refilling of consumables by the tenderer before putting them in to service within the quoted rate.
- 6.3 For placement of stator on trailer the loading fixtures are required. Arrangement of the same is in the scope of the work as required beyond supplied by BHEL.
- 6.4 All other tools and plants, steel packers, Auxiliary Pedestals, wooden sleepers, concrete blocks, consumables etc. will be arranged by the tenderer under his scope for the tendered work to be carried out within the awarded price. The required shims and packers of various sizes are to be arranged by the tenderer within the rate quoted and kept ready before the commencement of the work.
- 6.5 Any or all special T & P supplied by BHEL Hardwar shall be provided on free of hire charges to use for the work. All such special T&Ps are to be drawn from BHEL FARAKKA stores through the prescribed Indent forms and transported to work place by the tenderer. After completion of work tenderer shall return the tools to BHEL store in good condition. Any damage/ defects noticed while returning shall have to be replaced/ repaired rectified through BHEL approved vendor at his cost.

**7.0 ITEMS TO BE SUPPLIED BY BHEL AT POINT OF UNLOADING FROM WAGON ON RETURNABLE BASIS**

- 7.1 Item nos 10, 11, 12 & 13 of enclosed drg no 0-139-38-01022C will be assembled with the stator dispatched from BHEL/Hardwar.

7.2 Bidder is required to return all the above items along with the stator and any other item issued free for use by BHEL at Farakka site.

7.3 The pay load capacity (carrying capacity minus weight of axles) of hydraulic axles provided for transportation (put together) must be more than gross weight of the consignment. The capacity of puller will not be considered for this purpose.

**8.0 INDEMNITY**

The bidder shall hereby indemnify the company against all losses, claims etc. (including third party losses) arising out of any of his acts or out of the acts of his servants and his agents and out of transportation of the company goods.

**9.0 FORCE MEJURE CLAUSE**

In case of force majeure conditions like Acts of God, War, Sabotage, Riots, Civil Commotion, Police Action, Flood, Fire, Cyclone, Earthquake, Epidemic etc over which bidder has no control, the transporter will inform BHEL immediately. Any delay in delivery of consignments due to the above reasons shall be duly considered by BHEL on representation, with documentary proof by the transporter. It is clarified that mechanical failure shall not come under force majeure.

**10.0 TIME SCHEDULE & LIKELY TIME OF EXECUTION :**

10.1 [The contractor is required to commence the work within 7 days from the date of issue of LOI unless BHEL decides to fix any other later date.](#) However, the actual date of start of work, to fix up the zero date of the contract, will be certified by BHEL Engineer after adequate mobilisation of manpower and T&Ps by the contractor.

10.2 [Contractor should submit the design and detailed drawings to BHEL site for approval before the casting of pedestals at unloading point of rail point as required within a week of start of work.](#)

10.3 The contractor has to mobilize all resources FOR CASTING THE CIVIL FOUNDATION PADS at Farakka project unloading point and also complete the preparatory works as well as on en-route. Tenderer must be in a position to place the trailer as soon as the consignment reached at Farakka and commence the work immediately / as per the instructions of BHEL.

The work has to be completed within **02 months** or as agreed by construction manager BHEL Farakka site.

10.4 Status of movement by rail will be communicated through e-mail/ telephone from time to time by Farakka site. [Notice period to place vehicle\(s\) along with all T&P, fixtures and all paraphernalia at designated work place shall be within 07 days on intimation from BHEL site.](#)

The expected date of arrival of stator at Farakka is in April 2009. The actual date of receipt will be intimated to tenderer in advance. However the consignment may reach earlier or later than the dates indicated and the

Tenderer must be in a position to commence the work immediately.

**11.1 RATE SCHEDULE CUM BOQ/VARIATION**

- 11.1 Contractor shall fully understand description and scope of work before quoting. The scope of work and responsibility of the contractor as mentioned under these specifications shall be covered within the quoted / finally accepted rates.
- 11.2 The Tenderer shall quote the prices/rates for entire scope of work as per the rate schedule only, in part II price bid (Original). Conditional price bids or price bids with any deviation / clarification etc. are liable to be rejected. No cutting / erasing / over writing shall be done.
- 11.3 Quantities mentioned in the rate schedules are approximate only and liable for variation. The tentative contract value (CV) for entire scope of work shall be calculated as per finally quoted / accepted item rates & the quantities indicated in Rate Schedule cum BOQ.
- 11.4 Contractor's total quoted price as per rate schedule will be taken as tentative only. The contractor undertakes to erect / commission actual quantities as per advice of BHEL Engineer and accordingly the final contract price shall be worked out on the basis of quantities actually erected at site and payments will also be regulated for the same. [The quantities indicated against each item of BB of price schedule may vary to any extent and will be payable as per item rate of Individual item quantity.](#)

Contractors are requested to take above into account while quoting the unit rates quoted as per Rate Schedule so as to take care of such variation during execution stage.

**12.0 CERTIFICATE TOWARDS COMPLETION**

The work under your scope shall be deemed to have been completed in all respects only when so certified by BHEL. The decision of BHEL in this regard shall be final and binding on you.

**13.0 TAXES, DUTIES ETC**

- 13.1 TDS under Income Tax, VAT etc, if any, shall be deducted at prevailing rates on gross invoice value from the running bills unless exemption certificate from the appropriate authority/ authorities is furnished.
- 13.2 Price quoted shall be inclusive of all taxes except service tax. The service tax, as legally leviable & payable by the contractor under the provisions of applicable law/act, shall be paid by BHEL as per contractor's bill. However, contractor shall have to submit proof of service tax deposited by them immediately after the deposit but not later than the next bill submitted after the due date of deposit. The contractor shall furnish proof of Service Tax

registration with Central Excise Division covering the services covered under this contract. Registration should also bear endorsement for the premises from where the billing shall be done by contractor on BHEL for this project The contractor shall obtain prior approval of BHEL before billing the service tax amount.

With introduction of Cenvat credit rules 2004 which came into force w.e.f. 10.09.2004, excise duty paid on input goods including capital goods used for providing the output service and service tax paid on input service can be taken credit of against the service tax payable on output service. **As such, while offering the rates, the contractors may take into account the benefit of above provisions as the cost of input to contractors will be the cost net of excise duty and service tax and adjust their offer price accordingly to make it more competitive.**

- 13.3 In VAT applicable States, "Tax Invoice" if required under the relevant State VAT law shall be submitted along with other compliances as per concerned VAT Act.
- 13.4 Contractor shall get his organization registered with concerned sales tax/VAT authorities within 15 days of award of this contract, if applicable. The delay on this account and delay in bringing the material shall be to contractor's account and no extension of time shall be allowed on this account. The sales tax/VAT registration for this contractor shall be forwarded to BHEL within 30 days from the date of LOI. In case the contractor is already registered for sales tax/VAT with Govt. Authorities he must quote his registration no, while submitting their tender.
- 13.5 Contractor has to make his own arrangement at his cost for completing the formalities, if required, with Sales Tax/VAT Authorities, for bringing their materials, plants, and equipment at site for the execution of the work, including arrangement of Road permit as applicable under this contract

#### **14.0 TERMS OF PAYMENT**

- 14.1 Payment of **95%** of the contract price shall be payable on completion of the entire work against bidder's invoice, correct & complete in all respects, accompanied by joint measurement of work done duly signed by BHEL engineer, within 30 days of receipt of invoice by BHEL site office.
- 14.2 Balance **5%** of contract price shall be paid on winding up of site establishment as certified by BHEL engineer along with final bill.
- 14.3 BHEL at their discretion may further split up the above percentages and effect payment to suit the site condition, cash flow requirement and according to the progress of work. Value of civil works items shall be paid as per actual execution of items under BB of rates schedule as per applicability and site requirements.

14.4 Bidder may please note that payment shall be made through e–mode for which bank details are to be furnished as per format given in relevant annexure of tender.

**15.0 MOBILISATION ADVANCE**

NIL.

**16.0 PERFORMANCE BOND**

Not applicable.

**17.0 PRICE VARIATION CLAUSE**

The price shall remain firm throughout the period of contract.

**18.0 DETENTION CHARGES**

18.1 It is expected that the awarded scope of work shall be executed within time. In case due to reasons not attributable to the contractor, the work gets extended and trailer is detained beyond **Five weeks** of placement, provided the trailer remains functional during entire duration of deployment, the contractor shall be considered for payment of fixed charges @ Rs. 5,000/- per day (Rupees Five thousand per day only) against detention of trailer on receipt of advance notice intending to claim detention & on fulfillment of following condition.

- a) The reasons for delay in detention of trailer are not attributable to contractor but however subject to the provisions of clause – 31.
- b) The targets fixed during the over run period are achieved by contractor.

The contractor shall maintain sufficient work force and other resources required for completion of the job expeditiously for the entire contractual period including total extended period.

18.2 Once the claim of **detention** charges is admitted no other compensation whatsoever (like for delays in receipt of materials, availability of work fronts etc.) will be entertained

**19.0 EXTRA WORK**

Not applicable.

**20.0 CONTRACT PRICE**

20.1 The bidder shall quote their lumpsum & firm rate/ price as per the Price Schedule of this tender in sealed envelope, superscribing Price bid. The quoted rate/ price shall be in compliance with specification and all terms & conditions of tender.

20.2 The quoted rate/ price shall include all charges like unloading of TG stator from our special wagon, loading the same on hydraulic trailer, transportation charges including civil works if any, supervision etc, any other incidental

expenditure incurred related to above work. No demurrages etc, whatsoever are payable to the bidder.

20.3 **Offer shall be valid for 180 days from latest due date of submission of offer.**

21.0 **Contractor shall ensure following towards HSE & Social Accountability**

**21.0** Contractor shall ensure **deployment of Safety Officer** at site. The Contractor shall be fully responsible for accidents caused due to him or his workmen's negligence or carelessness in regard to the observance of the safety requirements and shall be liable to pay compensation for injuries. **It may be noted that non-compliance to HSE & SA requirements will result in penal action. In case of violations of safety requirements, the Contractor shall be liable for a penalty of Rs. 200/- for the first violation and Rs. 500/- for the subsequent violations. For serious lapses, as decided by BHEL Engineer, fines upto Rs. 5000/- at a time can be imposed.**

The amount towards penalties as above will be deducted from running bills of the Contractor. The amount so collected above will be utilized for supporting the safety activities at site. The decision of BHEL on above will be final and binding on the Contractor.

**21.2 Some of the common safety rules to be followed during working are as follows :-**

- No outsider is allowed to enter construction area without permission.
- No body is allowed to enter at construction site without Safety Shoe.
- Never enter work area without Safety helmet & chin strap in place.
- No climbing/working allowed without proper safety belt above 2 m. height.
- Do not exceed the speed limit 25 Kmph within premises.
- No debris obstacles allowed on the roads & passages.
- All accidents/incidents to be reported to site Incharge.
- Do not walk on pipelines or false ceiling.
- Maintain good Housekeeping at work site
- All Site supervisors & engineers (including subcontractor's) must be imparted structured training on construction safety before start of the job & record to be maintained.
- Tools box talk (5-15 minutes) by supervisor prior to commencement of any job.
- Monthly safety meeting with Site In-charges.
- LPG cylinders not allowed for gas cutting.
- Good House keeping. Separate waste bins to be used for flammable & non flammable material.

- Safety awareness programs for workers by display of boards, posters, competitions, talks etc.
- Deployment of Safety Supervisors for every 250 workers and part there of at work site.
- Display of List of First Aid trained persons.
- Testing certificates for lifting tools & tackle.
- Provision & maintenance of fire extinguishers at construction site & material stores.
- Display of emergency telephone numbers at various locations.
- For work in confined space use 24 V lamp fitting & use tools with air motors or electric tools with max. 24 V.

**21.3** Further, the contractor is required to provide proper Safety Net System wherever the hazard of fall from height is present as per instructions of BHEL Engineer at site. The safety net shall be fire resistant, duly tested and shall be of ISI mark and the nets shall be located as per site requirement to arrest or to reduce the consequences of a possible fall of persons working at different heights

**21.4 Contractor shall ensure following :**

- (A) Contractor has to maintain contact with local hospital having scanning & other ultra modern medical facilities including ambulance required during emergency
- (B) Contractor has to ensure pre employment medical check for all staff & workers.
- (C) Contractor has to ensure that adequate First Aid facilities are available at work site for emergency purpose. This emergency set-up should include, but not limited to, the following
  - Oxygen set up
  - Breathing apparatus
  - Eye wash facility
  - Stretcher
  - Trauma blanket
  - Medicines.
  - First Aid Box as per Clause No. 49.1 (15)

In addition to above, BHEL (through its other contractor) has arranged ambulance at work site for emergency purpose, which can be utilized by contractor in case of emergency. In case , under unavoidable circumstances , if the ambulance is not available , the contractor will have to arrange for the same as under clause 21.4(A).

**21.5 The contractor shall comply with following towards Social Accountability:**

- The contractor shall not employ any employee less than 15 years of age in pursuant to ILO convention. If any child labour were found to have been engaged ,the Contractor shall be levied with expenses of bearing his education expenditure which will include stipend to substantiate appropriate education or employ any other member of family enabling to bear the child education expenditure.
- The contractor shall not engage Forced / Bonded Labour and shall abide by abolition of Bonded Labour System (Abolition) Act, 1976.
- The contractor shall maintain Health & safety requirement as stipulated in the Contract and Contract Labour ( Regulation & Abolition) Act,1970.
- The Contractor shall abide by UN convention w.r.t Human Rights and shall be liable for Discrimination /Corporal punishment for failure in meeting with relevant requirements.
- The Contractor shall abide the requirement of Contract Labour (Regulation & Abolition) Act, 1970 for working hours.
- The Contractor shall abide by the statutory requirement of Minimum Wages Act 1948, payment of Wages Act 1936.
- The Contractor shall arrange potable drinking water to its employees & workers.

## 22.0 PRILIMINARY and CIVIL WORKS

- 22.1 Before starting erection job contractor shall ensure that area connected to his scope of work is sufficiently enclosed as per instruction of engineer. The contractor shall arrange to get the working area and surroundings cleared daily to ensure the dust free atmosphere and free from seepage water for working and shall maintain sufficient labour and general cleaning of work areas. Delay of work on this account will not be acceptable.
- 22.2 The contractor shall avoid any accident to the working personnel.
- 22.3 ***Entire scope of all the civil works alongwith materials including design detailed in this tender, and any other required minor civil works for safe and efficient operation of tools and tackles like grouting/ excavation/ casting of foundation/ anchor points for derricks, winches, guy ropes fastening scaffoldings etc. or any other temporary supports shall also be the contractor's responsibility. For these civil works all materials including cement/ steel and required facilities will have to be arranged by contractor at his own cost.***
- 22.4 The contractor shall provide his tool stores for special tools and instruments at a convenient place near to the place of working area.

23.0

**FACILITIES TO BE PROVIDED BY BHEL / CONTRACTOR**

- a. BHEL / NTPC shall provide adequate open space for temporary storage / fabrication, free of cost to contractor within the plant boundary. It is the responsibility of the contractor to construct their office sheds, provide all utilities and dismantle level and clear the site after completion of work or as and when required, as a part of his scope of work.
- b. The Contractor shall be responsible for providing all necessary facilities like residential accommodation, transport, electricity, water, medical facilities etc. at his own cost as required under various labour laws and statutory rules and regulations framed there under to the personnel employed by him.
- c. **Water for Construction and drinking** shall be provided at one point inside the plant premises on free of charge. The contractor has to make his own arrangements of further distribution required for the supply of construction water as well as potable water for labour and other personnel at work site from this terminal point. All arrangements for further distribution have to be made by the contractor.
- d. **Electricity** source (415/ 440 V) for utilizing construction power will be provided free of charge at a single point at plant from where contractor shall make arrangement for drawl of power including power cable, suitable power distribution boards and further distribution conforming to the standards and requirements including maintenance of the distribution lines at his own cost to use construction power. The contractor shall submit to the Engineer his electrical power requirements.
- e. Any other voltage if required shall be arranged by the contractor from power supply as above. All wiring must comply with local regulations and will be subject to Engineer's inspection and approval before connecting supply. Supply of electricity shall be governed by Indian Electricity Act and Installation Rules and other Rules and Regulation as applicable.
- f. **NOTE:**
  - They will however ensure that there is no wastage. Periodical audits will be held to ensure that these resources are being optimally used. For this the contractor has to provide an energy meter at his end.
  - In case any wastage is observed BHEL reserves the right to recover any charges / penalty as deemed fit.
  - Contractor will have to provide proper insulated cables for power distribution and joints, if any, will be done with proper jointing kits.
- g. Required energy meter, all cables, fuses, power distribution boards, switches, switchboards, bus bars, earthing arrangements, protection devices e.g. ELCB, if any, and any other installation as specified by statutory authority, client in this regard, for drawl of construction power

shall be arranged by the contractor. Obtaining approvals, payment of necessary fees, duties etc towards the clearance of such installations, prior to these being put to use or as may be specified, shall be the responsibility of the contractor.

- h. Electricity for construction power and light will be provided by NTPC near TG and A/B row. Contractor shall arrange further distribution of water for construction purposes.
- i. The contractor at his cost should arrange for temporary lighting in and around his work area. However adequate lighting facilities such as flood lamps, hand lamps and area lighting shall be arranged by the contractor at the site of construction, contractor's material storage area etc. within finally accepted rates.
- j. BHEL will not be responsible for any loss or damage to the contractor's equipment as a result of variation in voltage or frequency or interruptions in power supply. The contractor should ensure that the works in critical areas are not held up in the event of power break-down and for the same he should have suitable standby arrangement at his cost. In the event of breakdown in the electric supply, if the progress of work is hampered, it will be the responsibility of the Contractor to step up the progress of work after restoration of electric supply so that overall progress of work is not affected.
- k. On completion of work or as and when required by BHEL, all the temporary buildings, structures, pipe lines, cables etc shall be dismantled and leveled and debris shall be removed, as per instructions of BHEL, by the contractor at his cost. In the event of his failure to do so, the Engineer will get it done and expenses incurred shall be recovered from the contractor along with prevailing overheads. The decision of BHEL Engineer in this regard shall be final.
- l. In case of non-availability of customer supplied power and / or water, it is the responsibility of the contractor to make alternative arrangements. Contractor shall be adequately equipped to arrange standby diesel welding generators in the event of construction power failure. Essential welding jobs shall not be stopped on account of main construction power failure.

## **24.0 INSURANCE**

- 24.1 All contractors' equipment will be insured by the contractor up to the time of completion of the contract. The Contractor shall take a workers' compensation insurance policy for all the workmen employed by him against accidents and injuries and all other insurance as per the statutory/customer requirements with no liability to BHEL or its customer.

## **25.0 LIQUIDATED DAMAGES (LD) --**

25.1 For delay in completion of work attributable to the contractor, the LD shall be applicable at the rate of ½% of the contract value per week of delay or part thereof limited to a ceiling of 10% of the contract value as mentioned under clause no.25.5 of the GCC of the tender.

## **26.0 SECURITY DEPOSIT**

26.1 The contractor shall submit Security Deposit within 15 days from the date of issue of LOI as per clause no. 16.2 of the General Conditions of Contract (GCC). In case the contractor opts to furnish Bank Guarantee as a part of Security Deposit, the BG shall be issued as per the Performa enclosed as per Annexure-H of the GCC and also that the BG should be issued preferably through any of the Member Banks listed in the GCC; For BG through any other Nationalized Bank (Not covered in the list of Member Banks of GCC), the discretion of its acceptance shall lie solely with BHEL.

**Security deposit shall be released by project site against the contract value awarded for that project site on completion of work. However, BG towards SD shall be returned after completion of entire work against the contract.**

## **27.0 OTHERS**

27.1 In case of any contradiction between General Conditions of Contract (GCC) and Special Conditions of Contract (SCC), the latter shall prevail.

27.2 Clause 'Guarantee' of GCC shall not be applicable against this tender. The BG towards Security Deposit shall be released within 30 days of release of final payment of respective project site.

27.3 For reverse auction/ for Price Bid opening, only those bidders will be considered who will be qualified for the subject job on the basis of pre-qualification evaluation/ Techno-commercial bids. BHEL reserves the right to reject the bidders with unsatisfactory past performance in the execution of a contract. BHEL's decision in this regard shall be final & binding.

**ANNEXURE-A**  
**TECHNICAL PROCEDURE.**

**1.00 WORK TO BE CARRIED OUT AT FARAKKA PLANT RAILWAY TRACK UNLOADING POINT AND FURTHER MOVING TO DESTINATION AT TG HALL UNIT 6.**

The stator is to be unloaded by the contractor from the railway wagon using all fixtures and foundations and transfer the stator on to the hydraulically operated trailer using all his resources.

**2.0 UNLOADING FROM ROAD TRAILER AT FARAKKA STPS SITE.**

Unloading of the stator on unloading pedestals with jacks and supports under the strand jack lifting arrangement at TG hall 'A' row way by his own fixtures shall be done by other party of BHEL. The contractor shall facilitate in the process along with required available fixtures if any needed for the unloading process of stator.

**3.0 ASSEMBLY OF CARRIER BEAM WITH 24 AXLE WAGON AT FARAKKA PLANT.**

Align and assemble the carrier beam on to the wagon bolster. Connect vacuum & hydraulic pipelines. Ensure that the buffers and couplings are located at both extreme ends of the wagon. Hand over the assembled wagon to Railway for movement ex Farakka Plant to BHEL Hardwar siding served by Northern Railway.

**4.0 HANDOVER SPECIAL TRANSPORT EQUIPMENTS AND FIXTURES**

Special transport equipments such as transport end shields with roller blocks, stopper supports and support beam assembly with packers are to be sent back to Hardwar for further use of road transport. The returnable materials of transporting device are to be packed and loaded on the truck/rail for safe transport to BHEL Hardwar by the contractor within the quoted rate.

**ANNEXURE - B**

**TECHNICAL REQUIREMENTS**  
**(Tenderer to furnish relevant details with the technical bid)**

**I TRAILERS DETAILS**

SL. NO	SPECIAL ROAD TRAILER	TRAILER	REMARKS
01	TRAILER MAKE		
02	OWNERSHIP OF VEHICLE (PRROF GIVING FULL OWNERSHIP OF VEHICLE)		
03	NO. OF AXLES LINE		
04	LOADING AREA		
05	WEIGHT OF EMPTY AXLE		
06	LOAD PER AXLE LINE		
07	CARRYING CAPACITY OF AXLE		
08	BOLESTER TYPE AND CAPACITY (BOLSTER DESIGN SHOULD BE SUCH THAT A GAP OF MINIMUM 400 MM IS AVAILABLE BETWEEN BOTTOM MOST POINT OF CONSIGNMENT AND THE ROAD WHEN LOADED		
09	BOLESTER TRUNTABLE DETAILS		
10	DISTANCE BETWEEN AXLE		
11	NUMBER OF WHEELS PER AXLE		
12	DISTANCE FROM WHEELS TO WHEELS TO WHEEL IN ONE AXLE		
13	WHEEL SIZE		
14	TOTAL LIFT AND SHIFT OF VERTICAL SIDE BAYS CARRIER BEAM DURING TRANSIT USING		

	HYDRAULIC SYSTEM OF TRAILERS.		
15	DISTANCE BETWEEN INNER MOST AXLE OF TWO TRAILERS		
16	LOAD PER WHEEL		
17	UNLADDEN WEIGHT		

**II PRIMEMOVER DETAILS**

- a) MAKE
- b) TYPE
- c) CAPACITY
- d) HORSE POWER
- e) FRONT AXLE LOAD
- f) REAR AXLE LOAD
- g) TYRE PRESSURE
- h) GROSS LOAD OF PRIME MOVER

**III PREVIOUS EXPERIENCE**

PROOF OF EXPERIENCE OF TRANSPORTATION OF CONSIGNMENT SIMILAR IN NATURE BY USING HYDRAULIC SPLIT ROAD TRAILERS OF SUITABLE COMBINATIONS IS TO BE SUBMITTED ALONG WITH THE TECHNICAL BID.

**IV ROAD SURVEY:**

LATEST DETAILED SITE SURVEY CARRIED OUT BY THE TENDERER GIVING DETAILS OF GROUND CONDITIONS OF BRIDGES, CULVERTS, NEGOTIATION OF TURNING AT VARIOUS CURVATURE ETC IF ANY, MAY BE SPECIFIED. FORMATION OF DIVERSION ROAD / SUITABLE RAMP IF ANY FOR THE BRIDGES, PREPARATIONS OF AREA OF UNLOADING AT RAILWAY TRACK, AT UNLOADING POINT AND OF ROUTE TO BE INDICATED.

**V TOTAL DISTANCE TO BE COVERED: .....KMS**

**VI SKETCH AND METHOD**

SKETCH WITH TENTATIVE DIMENSIONS OF TRANSPORT ARRANGEMENT TO BE ADOPTED BY THE TRANSPORTER IN LINE WITH THE METHOD SUGGESTED INDICATING ALL DETAILS OF BOLSTER/ TURN TABLE ARRANGEMENT IS TO BE SUBMITTED BY THE BIDDER ALONG WITH THE TENDER.

**VII IBA APPROVAL DATE WITH VALIDITY.**

**REQUIREMENTS:**

- A FULL FLEDGED EXPERT AND ESCORT TEAM TO BE ARRANGED FOR THE SUPERVISION OF SAFE TRANSSHIPMENT AND TO ACCOMPANY THE SIGNMENT TILL IT REACHES THE SITE.
  - SAFETY PRECAUTIONS INSIDE FARAKKA POWER PLANT BOTH FOR THE CONSIGNMENT AS WELL AS FOR THE PROPERTY OF PLANT TO BE OBSERVED. SPECIAL SAFETY FACILITIES AVAILABLE WITH THE TRANSPORTER MAYBE SPECIFIED.
  - SUITABLE AND GOOD HYYDRAULIC AND PRIME MOVER TO BE ARRANGED TO AVOID ANY DELAY IN TRANSPORTATION.
  - CIVIL DESIGN FOR THE FOUNDATION AT FARAKKA POWER PLANT AND DIVERSION ROADS/ MAPS.
  - CONSTRUCTION AND PREPARATION OF REQUIRED FOUNDATIONS WITH MATERIALS AT UNOADING TRANSSHIPMENT AREA, READYNNESS OF EQUIPMENT HANDLING AREA AT UNLOADING POINT, ALL REQUIRED INCEDENTAL CIVIL WORKS OF ROUTE SUCH AS ROAD TURNINGS AND CULVERTS ETC FOR HANDLING OF STATOR WHICH ARE NOT BEING PROVIDED BY NTPC AT PLANT/ SUITABLE TO SHIFT THE STATOR.
-

**ANNEXURE-I**

**CERTIFICATE OF DECLARATION FOR CONFIRMING THE KNOWLEDGE OF SITE CONDITIONS**

We,..... Hereby declare and confirm that we have visited the project site under the subject namely, .....and acquired full knowledge and information about the **site conditions, wage structure, Industrial climate and total work involved**. We further confirm that the above information is true and correct and we will not raise any claim of any nature due to lack of knowledge of site condition.

Tenderers Name and Address

Place: (Signature of the Tenderer with stamp)

Date:

**ANNEXURE-II**

**NON DISCLOSURE AGREEMENT  
Memorandum of Understanding**

BHEL PSNR is committed to Information Security Management System as per Information Security Policy.

M/s....., providing.....service to BHEL PSNR, Noida hereby undertake to comply with the following in line with Information Security Policy of BHEL PSNR;

- To maintain confidentiality of documents & information which shall be used during the execution of the Contract.
- The documents & information shall not be revealed to or shared with third party which shall not be in the business interest of BHEL PSNR.

( )  
M/s. BHEL, PSNR

( )  
M/s.....

ANNEXURE-III

**GENERAL TERMS AND CONDITIONS OF REVERSE AUCTION (RA)**

Against this NIT for the subject work, **tender shall be processed through Reverse Auction mode i.e., ON LINE BIDDING ON INTERNET. The General Terms and Conditions of the RA shall be as follows;**

1. For the proposed reverse auction, technically and commercially acceptable bidders only shall be eligible to participate.
2. BHEL will engage the services of a service provider who will provide all necessary training and assistance before commencement of on line bidding on internet.
3. BHEL will inform to the vendor in writing, in case of reverse auction along with the details of Service Provider to enable them to contact & get trained.
4. **'Business rules'** like event date, time, Start price, bid decrement; extensions etc. also will be communicated through service provider for compliance.
5. Vendors have to fax the Compliance form in the prescribed format (provided by Service provider) before start of Reverse auction. Without this, the vendor will not be eligible to participate in the event.
6. BHEL will provide the calculation sheet (e.g., EXCEL sheet) which will help to arrive at "Total Contract Value (Tentative) Based on Rate Schedule/BOQ".
7. Reverse auction will be conducted on scheduled date & time.
8. At the end of Reverse Auction event, the lowest bidder value will be known on the network.
9. The lowest bidder has to Fax the duly signed Filled-in prescribed format as provided on case-to-case basis to BHEL through Service provider within 24 hours of Auction without fail.
10. During Reverse Auction, if no bid is received within the specified time, BHEL at its discretion, may decide to revise opening price/scrap the reverse auction process/proceed with conventional mode of tendering.
11. **Sealed bid Reverse Auction:** The opening bid (In the initial auction) of the bidders shall be same as that quoted in their Final Sealed price submitted to BHEL. **The bidders shall confirm in writing to BHEL that their opening bid (In both cases) shall be same as that quoted in their final sealed price bids submitted to BHEL against this NIT along with Technical Bid (Part-I).**
12. BHEL reserves the right to cancel Reverse Auction (RA) without assigning any reasons and resort to considering the sealed bids submitted by vendor for processing and finalizing the tender.
13. Any variation between the on-line bid value and the signed document will be considered as sabotaging the tender process and will invite disqualification of vendor to conduct business with BHEL as per prevailing procedure.
14. In case BHEL decides not to go for Reverse Auction procedure for this tender enquiry, the Price bids and price impacts, if any, already submitted and available with BHEL shall be opened as per BHEL's standard practice.
15. Bids-given by the bidders during the Reverse Auction process will be taken as an offer to execute the work. Bids once made by the bidder, can not be cancelled/withdrawn and bidders shall be bound to execute the work as mentioned above at the final bid price. Should be bidder (Lowest) back out and not execute the contract as per the rates quoted, BHEL shall take action as appropriate.

**NO DEVIATION CERTIFICATE**

**FORMAT OF UNDERTAKING**

(To be submitted in the bidder's letter head)

REF:

Dt.

**Bharat Heavy Electricals Limited  
Power Sector – Northren Region,  
Plot No. 25 , Sector - 16A ,  
Distt. Gautam Budh Nagar,  
NOIDA – 201 301.INDIA**

**Sub.: Transhipment of Turbo Generator Stator of 500 MW unit of Size Length 8.830Mtr, Width 4.100Mtrs, Height 4.120Mtr, Net Weight 265 MT, gross Weight 275MT supported through a carrier beam of appx. size Length 31.120mtr, Width 0.860Mtr, Height 0.970Mtr and Weight 50MT from the railway wagon inside the power plant premises on to Hydraulic Trailers and its safe transportation to 'A' row near TG hall unloading point at 1 x 500 MW Unit-6, Farakka Super Thermal Power Project (FSTPP) at Farakka town of Murshidabad district of West Bengal**

**TENDER NO. BHEL: NR(SCT): DADRI:CNI: U-5 & 6:549**

Dear Sirs,

With reference to above, this is to confirm that as per tender conditions, we have visited [Dadri site](#) before submission of our offer and noted the job content & site conditions etc.

We also confirm that we have not changed / modified the tender documents as appeared in the website and in case of observance at any stage, it shall be treated as null and void. We hereby confirm that we have not taken any deviation from tender clauses together with other references as enumerated in the above referred NIT and confirm our acceptance to reverse auctioning process and we hereby convey our unqualified acceptance to all terms and conditions as stipulated in the tender and NIT. In the event of observance of any deviation in any part of our offer at a later date whether implicit or explicit, the deviations shall stand null & void.

We confirm to have submitted offer strictly in accordance with tender instructions.

Thanking you,

Yours faithfully,

(Signature, date & seal of authorized  
representative of the bidder)

**ANNEXURE – V****Authorization of representative who will participate in the on line Reverse Auction Process;**

1	NAME & DESIGNATION OF OFFICIAL	
2	POSTAL ADDRESS (COMPLETE)	
3	TELEPHONE NOS. (LAND LINE & MOBILE BOTH)	
4	FAX NO.	
5	E-MAIL ADDRESS	
6	NAME OF PLACE/ STATE/ COUNTRY, WHEREFROM S/HE WILL PARTICIPATE IN THE REVERSE AUCTION	

**ANNEXURE-C****RATE SCHEDULE**

**Transhipment of Turbo Generator Stator of at 1 x 500 MW Unit-6, Farakka Super  
Thermal Power Project**

SL NO	DESCRIPTION OF ACTIVITY	VALUE (Rs.)
01	Entire scope of work as per tender specification for Transhipment of stator from wagon to the hydraulic split type road Trailers of suitable combination specified in the tender drawings and transportation near the 'A' row bay of power house between the existing foundations for unloading. Transportation and refixing of carrier beam back to wagon for onward transportation through wagon to BHEL Hardwar.	/
02	Design and Preparation of detailed drawings for four nos. Civil foundation pads in line with drawing No.3-139-38-01027, Entire civil works with materials and area development as per tender specifications at Farakka plant at Transhipment location. (Total amount as per item Rate Schedule BB)	

**Total Amount (in Figures and words)**

**Date:**

**(Signature of the tenderer with seal)**

Rate Schedule BB**CIVIL WORKS (ITEM RATES)**

SI No	CODE	DESCRIPTION OF ITEM	UNIT	TOTAL QTY	RATE	AMOUNT
		<b>CIVIL WORKS</b>				
		<b>EARTHWORK / SITE CLEARANCE / ROADWORK</b>				
1	<b>C2</b>	Surfact dressing of the ground including removing vegetation and in-equalities not exceeding 15 cm deep and disposal of rubbish, lead upto 50m and lift upto 1.5m in all kinds of soil.	sqm	500		
2	<b>C3</b>	Earth work in excavation in all types of ordinary and hard soil by mechanical means (Hydraulic excavator)/manual means including stacking the excavated soil, dressing of sides and ramming of bottom, dewatering of accumulated water from any source and keeping the surface dry for subsequent works such as concreting form work etc. and disposal of surplus excavated soil as directed, disposed soil to be neatly levelled and dressed lead upto 50 meters and lift upto 1.5meter complete.	Cu.M	24		
3	<b>C4</b>	Back filling available excavated earth in trenches, plinth, slides of foundations etc., including re-excavating the deposited soil excavated earlier, breaking clods, laying at all depths and heights in layers not exceeding 20 cm indepth, consolidating each deposited layer by ramming and watering complete lead upto 50 Metre and lift upto 1.5 Meter.	Cu.M	5		

4	<b>C5</b>	Disposal of surplus excavated earth and debris including re-excavating the deposited soil earlier, transportation, loading, unloading, laying at all depths and heights, leveling and dressing both the area (viz. From where earth is transported and where it is deposited) to required levels and slopes, complete with all lifts as directed.				
5	a)	upto 1 km	Cu.M	15		
6	<b>C6</b>	<b>Preparation and consolidation</b> of site area with power road roller of 8 to 12 tonne capacity after levelling, grading, dressing to camber and consolidating with road roller including making good the undulations etc. and re-rolling the subgrade and disposal of surplus earth lead upto 50 Mtrs	sqm	1600		
7	<b>C8</b>	<b>Supply and Laying</b> water bound macadam with specified stone aggregate stone screening and binding material including screening, sorting, spreading to template and consolidation with power road roller of 8 to 10 tonne capacity etc. complete with <b>supply for stone aggregate, screenings, kankar, moorum and red bajri etc.</b>				
8	<b>a)</b>	Base course with 63 mm to 45 mm size including stone screening 13.2mm size.	cum	160		
9		<b>PCC</b>				
10	<b>C14</b>	<b>Plain cement concrete</b> of mix 1:3:6 (1 cement : 3 coarse sand and 6, 20 mm down graded stone aggregate) for column footing, levelling, floors etc., including cost of all materials, lead, lift, labour charges, consolidation, shuttering, curing etc. complete.	Cu. M	250		
11		<b>RCC</b>				

12	<b>C20</b>	<b>Reinforced cement concrete</b> of mix 1:1.5:3 (1 cement, 1.5 coarse sand and ,3 :20 mm down graded aggregate) for column footing, sunshades, shelves, lintels etc. including cost of materials, lead lift, labour charges for concreting, curing etc. complete.	Cu. M.	21		
13	<b>C21</b>	<b>Centring and shuttering including providing all shuttering material</b> , strutting, propping etc. and removal of form work for : Lintels, beams, plinth beams, girders, bressumers and cantilevers.	sqm	25		
14	<b>C22</b>	<b>Providing and placing mild steel/ tor steel reinforcement</b> for RCC work including cost of all materials, labour for cutting, bending, binding and placing in position complete as per drawing and instruction of Engineer.	MT	2		

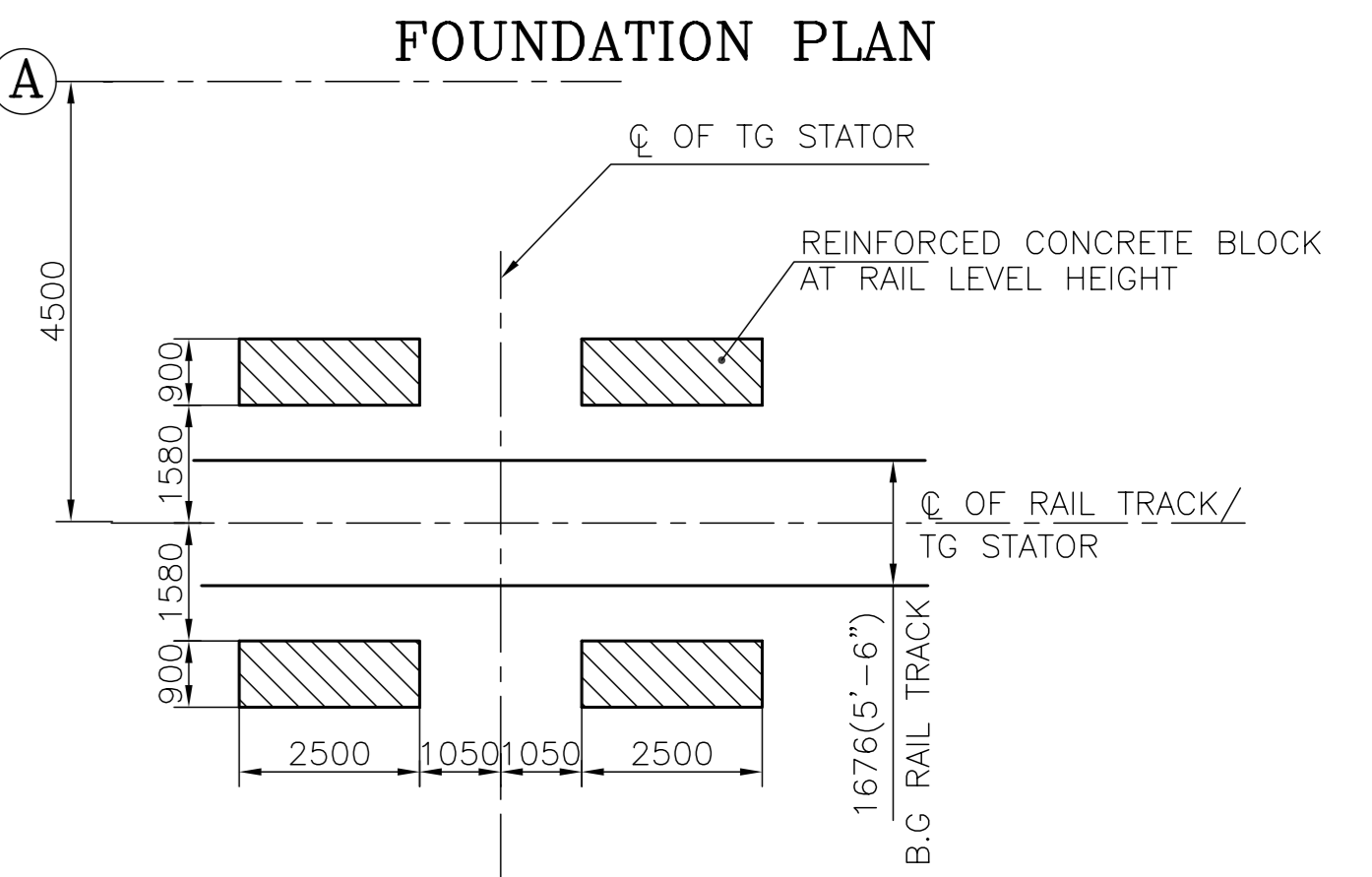
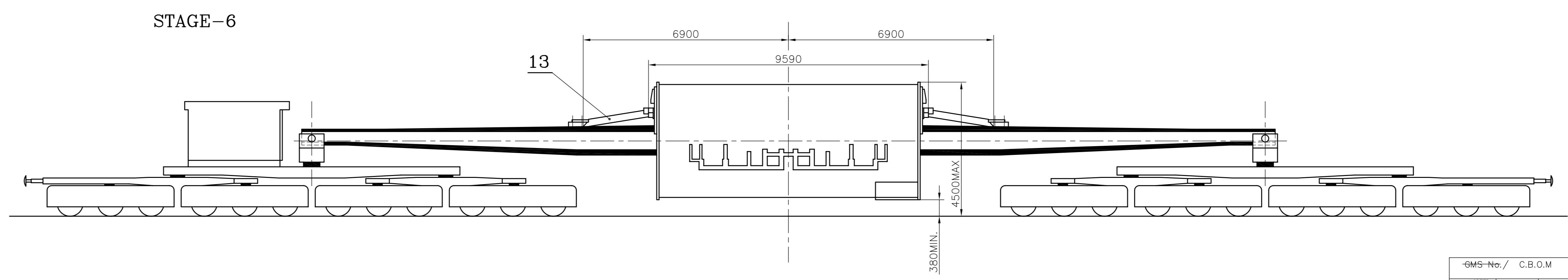
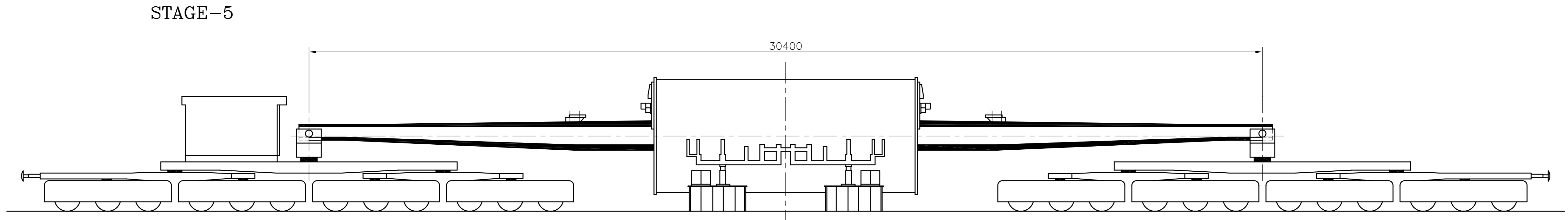
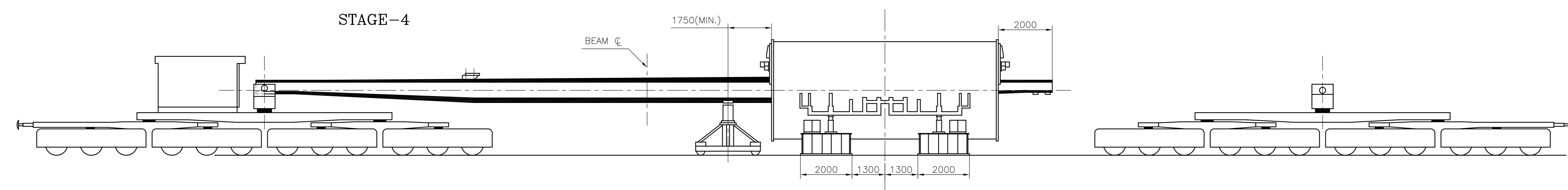
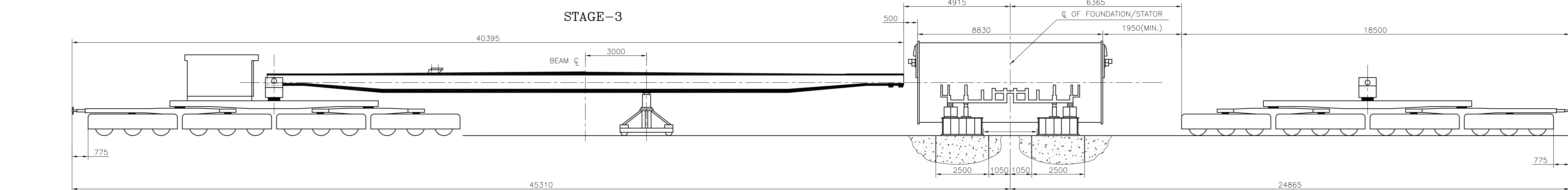
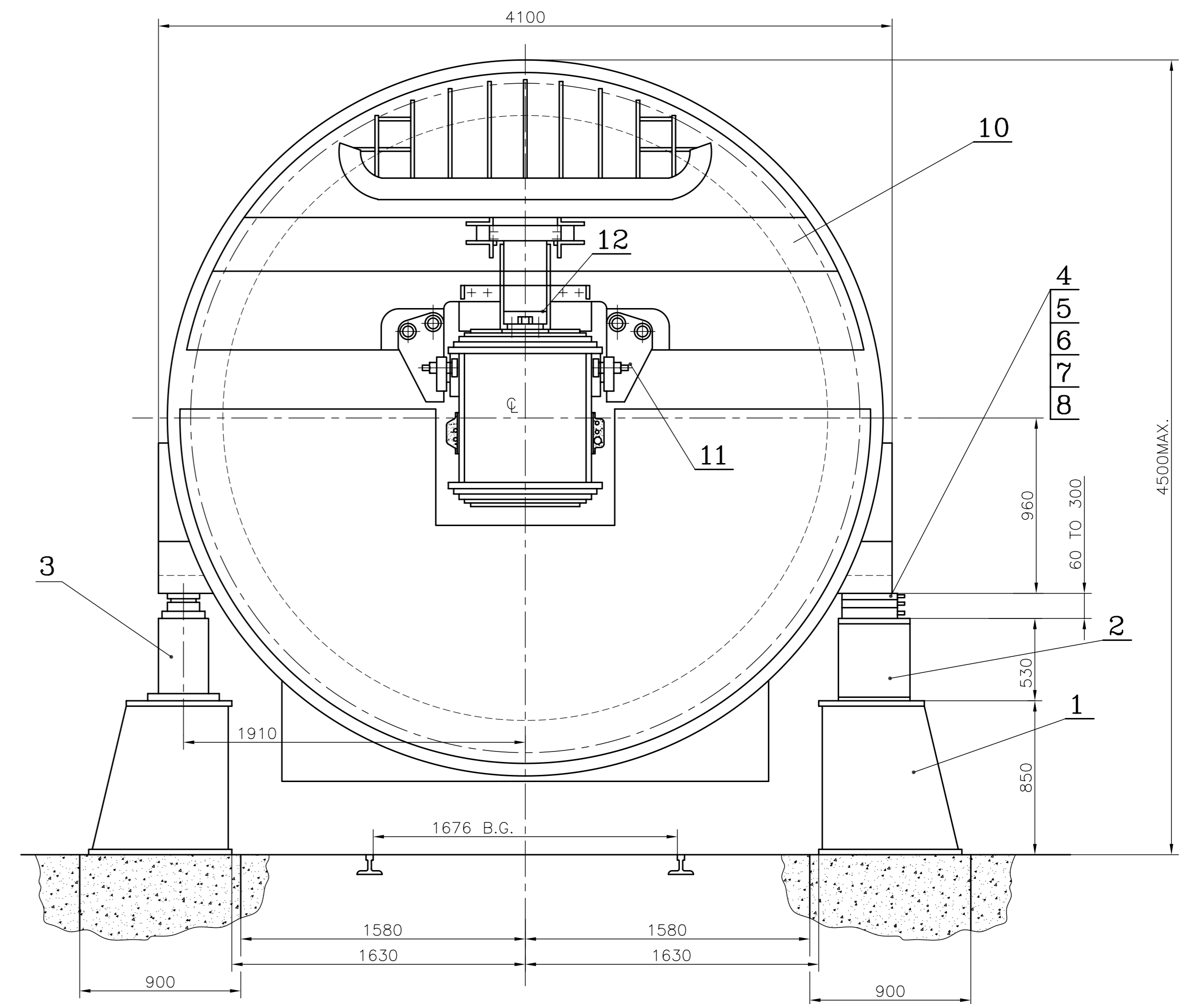
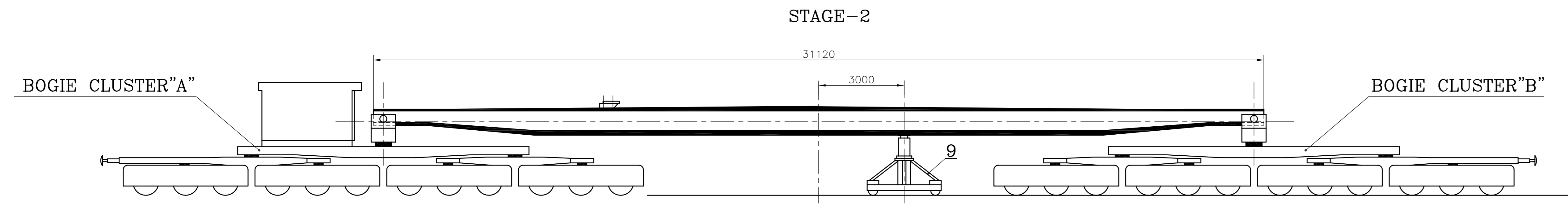
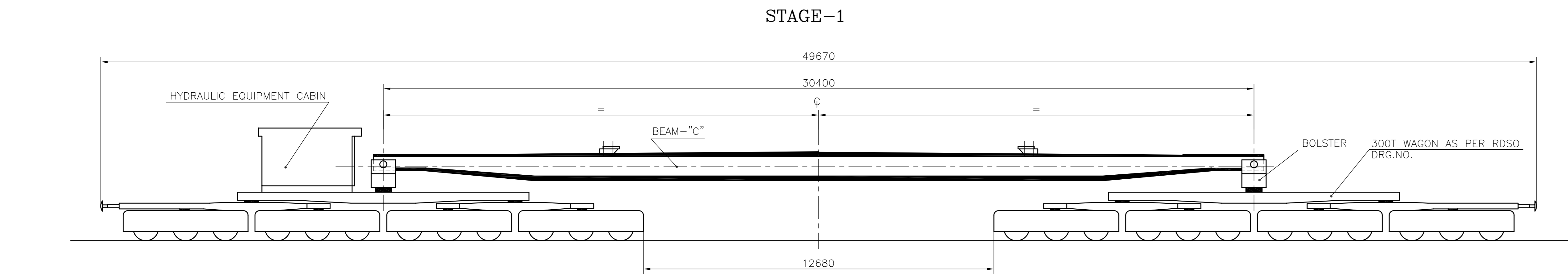
**Total Amount of BB (in Rs.)**

**NOTE:**

1. In case of omission in quoting any rate, the evaluation will be done considering the highest quoted rate obtained against that item but the work, if awarded, will be on the lowest quoted rate obtained against that item
2. The rate shall be entered in figures as well as in words. In case of difference in rates between words and figures, the lesser of the two will be treated as valid rate. .
3. The bidders shall enter both 'Unit Rate' & 'Amount'. In case of any mismatch between 'Total Amount based on Unit Rate' & 'Total Amount as quoted', the lower of the two shall be considered for evaluation and award.
4. The quantities indicated against each item of Rate Schedule BB above are tentative and same are liable to vary depending upon the site requirement. The contractor has to handle all items indicated by BHEL Engineer for completion of work. The Civil work shall be executed and paid as per actual requirement at site.

**Date:**

**(Signature of the tenderer with seal)**



- 1. GROSS WEIGHT OF WAGON = 187.8T
- 2. PAY LOAD (WT. OF TG STATOR) = 258.0T
- 3. AXLE LOAD = 18.57T
- 4. MAXIMUM LOAD ON EACH PEDESTAL = 125.0T
- 5. ACTUAL LOADING AREA = 1.6 M<sup>2</sup>
- 6. LOCATION OF RAIL TRACK w.r.t. A ROW = 4500 MM
- (REF. NTPC DRG. PE-DG-200-100-M201)

LIST OF ITEMS

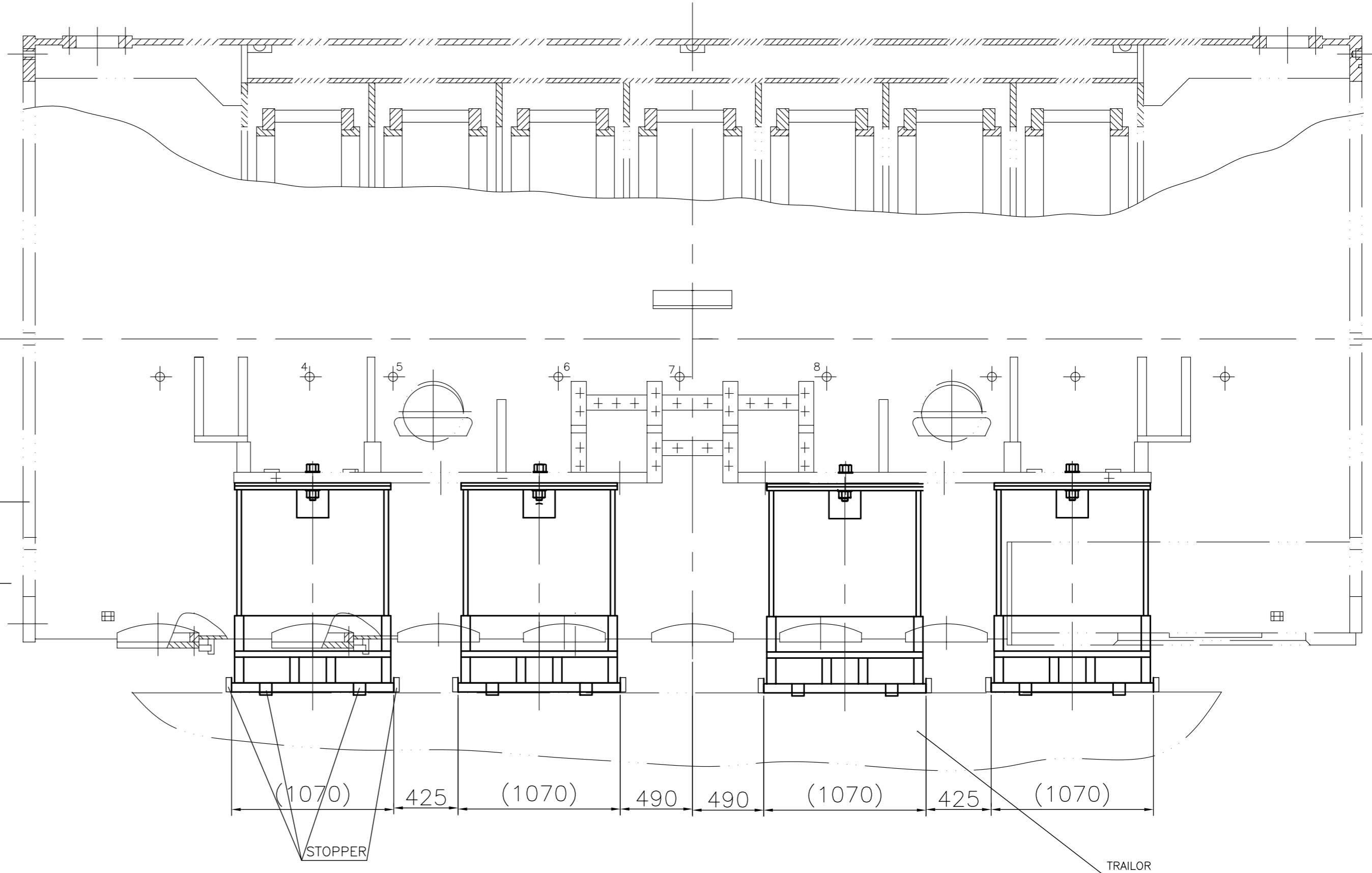
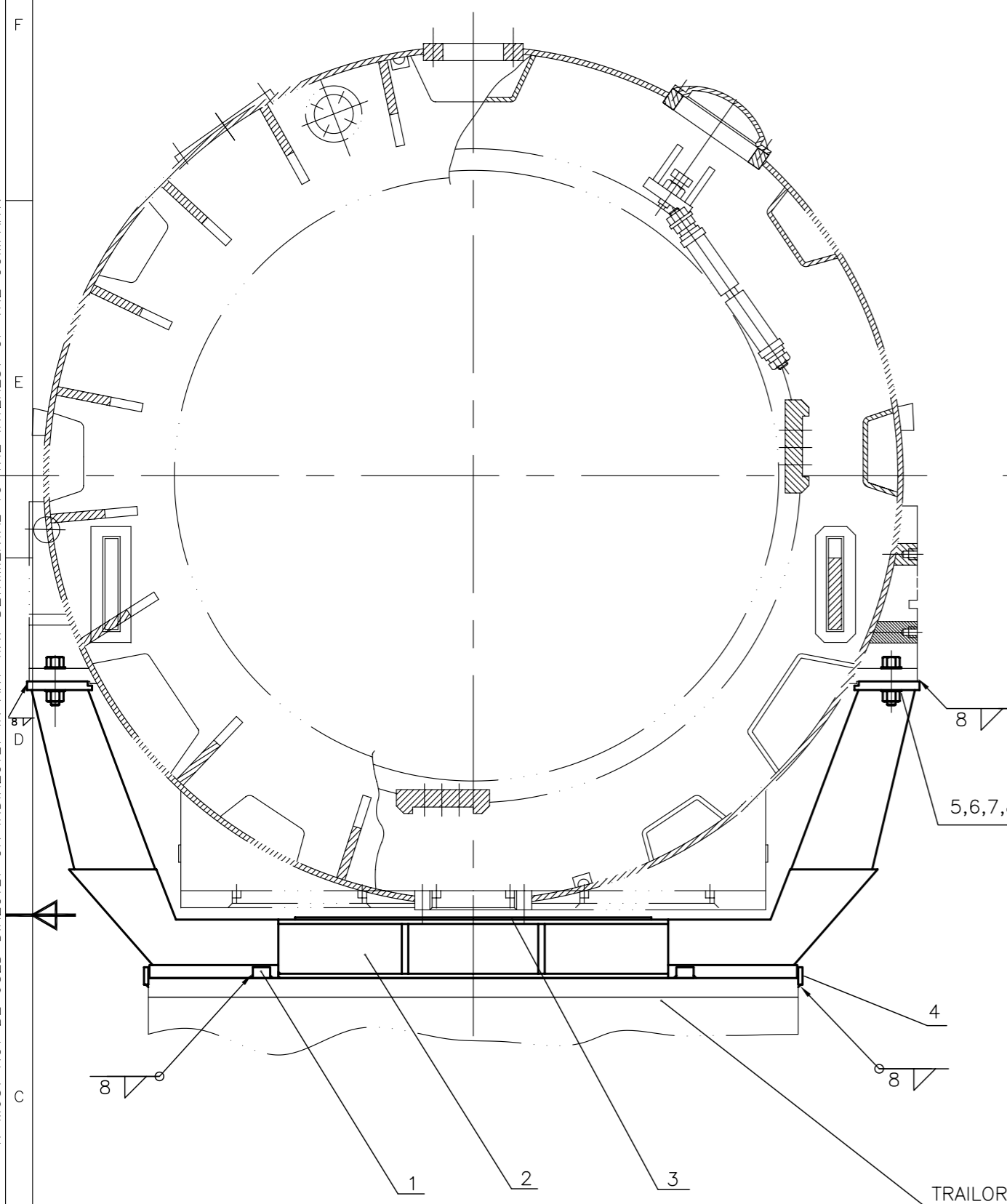
ITEM NO.	DESCRIPTION	QTY.	UNIT WT. IN KGS
1	BOTTOM PDEASTAL	4	1305
2	AUXILIARY PDEASTAL	4	260
3	175T HYDRAULIC JACK	4	250
4	SHIM 260X150X0.5	AS REQD	0.15
5	SHIM 260X150X3.15	"	0.96
6	SHIM 260X150X6	"	1.22
7	SHIM 260X150X10	"	3.04
8	SHIM	16	11.7
9	HYDRAULIC TROLLEY	1	3500
10	CARRIER END SHIELD	2	4260
11	STOPPER SUPPORT	2	141
12	ROLLER BLOCK	4	91.3
13	SUPPORT BEAM	2	18.3

GRADE OF UNTOLD DIM	M/CG-2/M/F AA0230208	WELDING-X/B/E/B AA0621104	GAS CUTTING-T3'AA0621101
DEPT TGE	SCALE 1:75	WEIGHT (KG)	REF. TO ASSY. DRG.
CODE 4133			
TITLE: STATOR LOADING AND UNLOADING WITH 300T SPL WAGON DRAWING NO: 0-139-38-01022C SHEET No. 01 No. OF SHEETS 01			

THE INFORMATION ON THIS DOCUMENT IS THE PROPERTY OF BHARAT HEAVY ELECTRICALS LIMITED. IT MUST NOT BE USED DIRECTLY OR INDIRECTLY IN ANY WAY DETRIMENTAL TO THE INTEREST OF THE COMPANY.

02010-8E-6E1-2  
DRAWING NO. 2-139-38-01070

COPYRIGHT AND CONFIDENTIAL  
THE INFORMATION ON THIS DOCUMENT IS THE PROPERTY OF BHARAT HEAVY ELECTRICALS LIMITED  
IT MUST NOT BE USED DIRECTLY OR INDIRECTLY IN ANY WAY DETRIMENTAL TO THE INTEREST OF THE COMPANY.



TECHNICAL REQUIREMENTS

1. IDENTIFICATION ACCORDING TO HW0400397.
2. THE TRAILOR PLATFORM MUST BE CONTINUOUS AND CAPABLE OF TAKING LOADS NEAR EDGES OF ITS WIDTH.
3. THE TRAILOR PLATFORM MUST HAVE A WIDTH MORE THAN 2990 MM.
4. FOR UNIFORM LOADING STEEL SHIMS ITEM 8 TO BE USED FOR LEVELLING.

ITEM	DESCRIPTION &	QTY.
1	PLATE 50X80X80	8 Nos.
2	FIXTURE FOR ROAD TRANSPORT	4 Nos.
3	RUBBER SHEET 5X1000X1600	8 Nos.
4	PLATE 40X100X100	16 Nos.
5	SCRU HEX.	8 Nos.
6	WASHER	16 Nos.
7	NUT HEX.	8 Nos.
8	SHIM 0.5X400X250	4 Nos.

GRADE OF UNTOL. DIM.:-		
M/GG	V/G/M/F AA 0230208	
WELDING	A/B/C/D-AA621104	
GAS CUTTING	T3'AA0621101	
REV.	DATE	ALTERED
		CHECKED

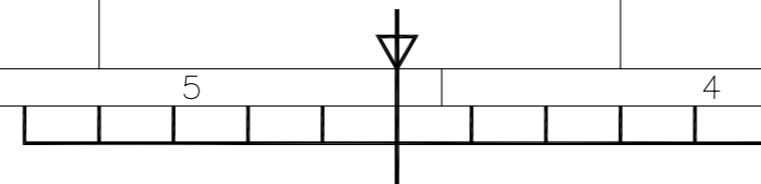
CBOM NO. 21393801070		STATUS OF DRG.	
AGREED DEPT.	NAME	SIGN	DATE
EMT	KOHLI	SD/-	11.1.2002

TYPE OF PRODUCT OR NAME OF CUSTOMER/ PROJECT		500MW TG			
DRN	S.K.SHARMA	SD/-	DATE	NO.OF VAR.	
CHD	K.NARULA	SD/-	28.11.01		
APD	R.C.BAJPAI	SD/-	11.1.2002		73, 74

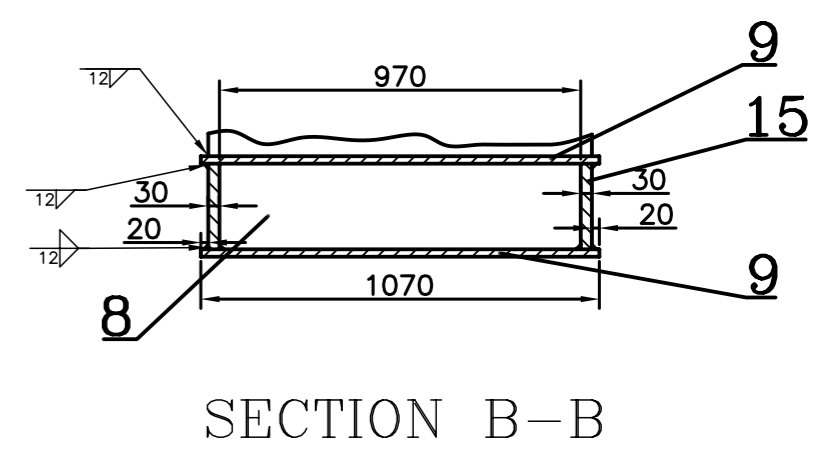
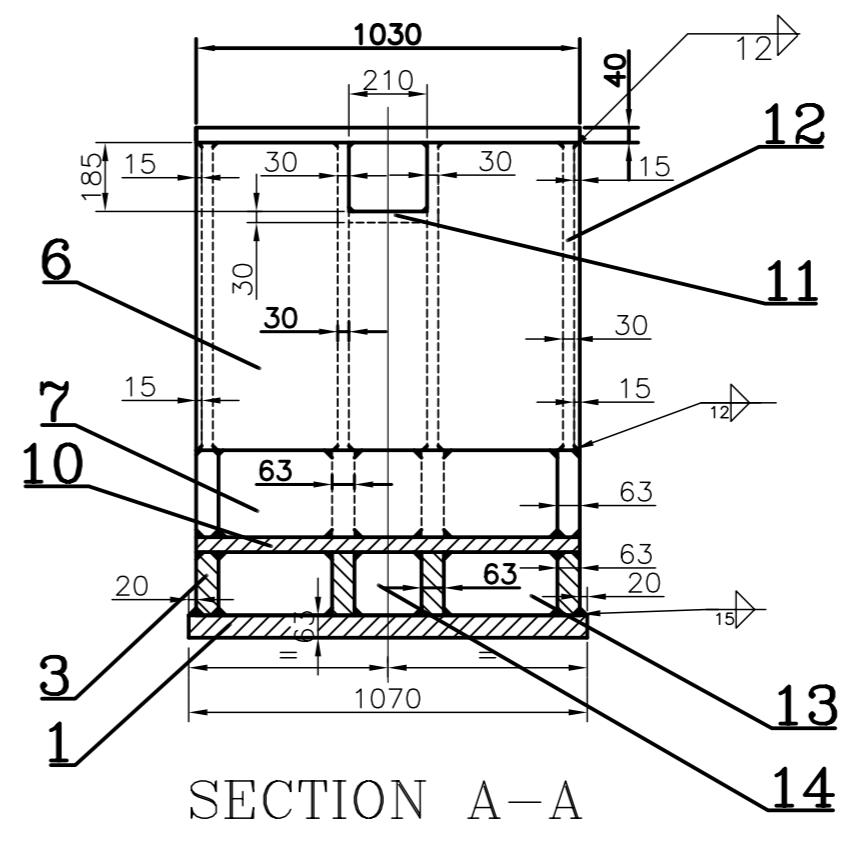
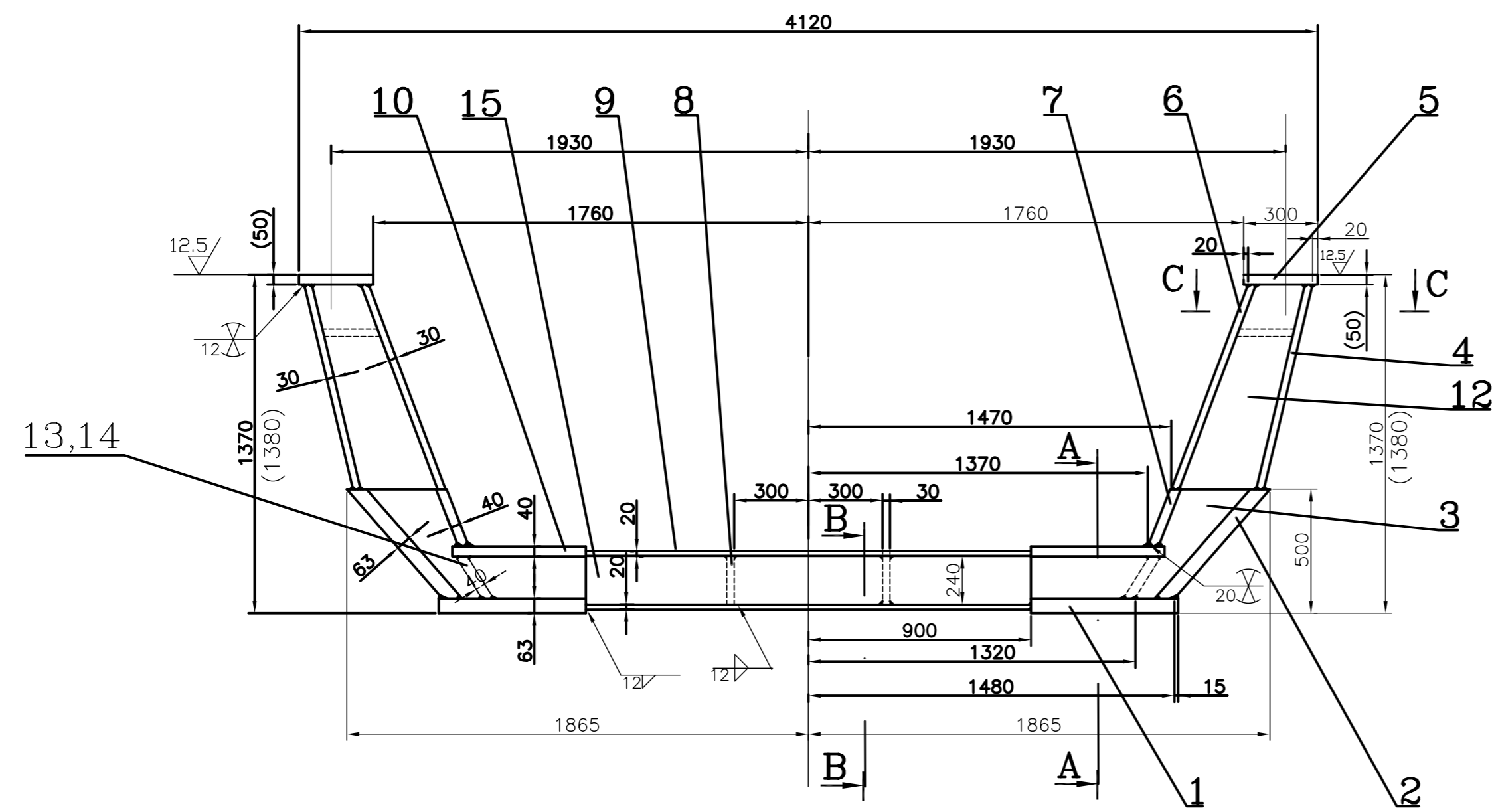
REV.	DATE	ALTERED PNM	sd/-
01	14.1.03	CHECKED KN	sd/-
CHANGES AS PER CHANGE ADVICE NO.TGE-2003-F-134			

DEPT.	TGE	SCALE	WEIGHT(Kg.)	REF. TO ASSY. DRG.	ITEM NO.	NO.OF ITEMS
CODE	4133	1:20	18772	-		75, 77

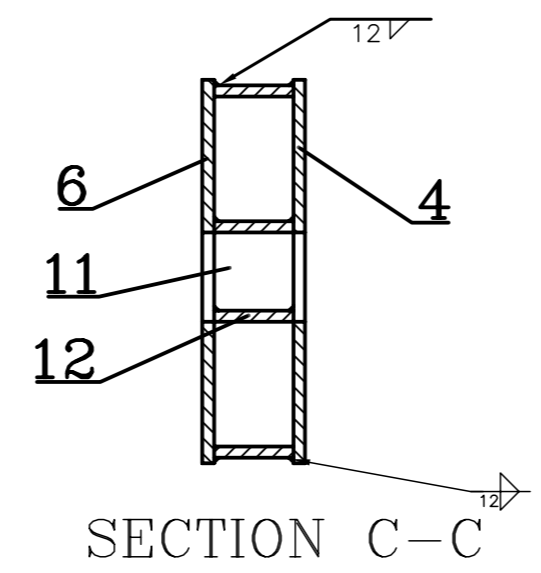
TITLE		DRAWING NO.	
ARRANGEMENT FOR LOADING OF STATOR		2-139-38-01070	
SHEET NO. 01		NO.OF SHEETS 01	



12010-88-681-2  
DRAWING NO. 2-139-38-01071



	15	20	12
LENGTH OF SEAM	32.6	4.1	54.2
WT. OF DEPOSIT (KG)	28.8	3.86	30.6
TYPE OF ELECTRODE	6018	6018	6018



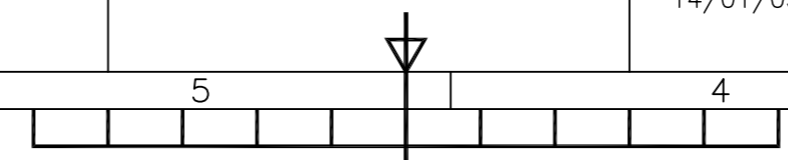
**TECHNICAL REQUIREMENTS**

1. IDENTIFICATION ACCORDING TO HW0400.397
2. QUALITY GRADE OF WELD SEAMS AS PER HW 0620.099 BS/BK.
3. TEST SCOPE AS PER HW 0850.199, CATEGORY OF SERVICE REQUIREMENT-2.
4. STRESS RELIEVE BEFORE MACHINING AS PER HW 0641.099.
5. DIMENSIONS IN BRACKET ARE BEFORE MACHINING.
6. PAINTING & CONSERVATION TO BE DONE AS PER STANDARD 0912.015
7. ITEM NOS. 9,10,6 AND 7 SHOULD BE WELDED ASSEMBLED ONLY AFTER ALL OTHERS PLATES HAVE BEEN FULLY WELDED WITH EACH OTHER.

COPYRIGHT AND CONFIDENTIAL THE INFORMATION ON THIS DOCUMENT IS THE PROPERTY OF BHARAT HEAVY ELECTRICALS LIMITED IT MUST NOT BE USED DIRECTLY OR INDIRECTLY IN ANY WAY DETRIMENTAL TO THE INTEREST OF THE COMPANY.

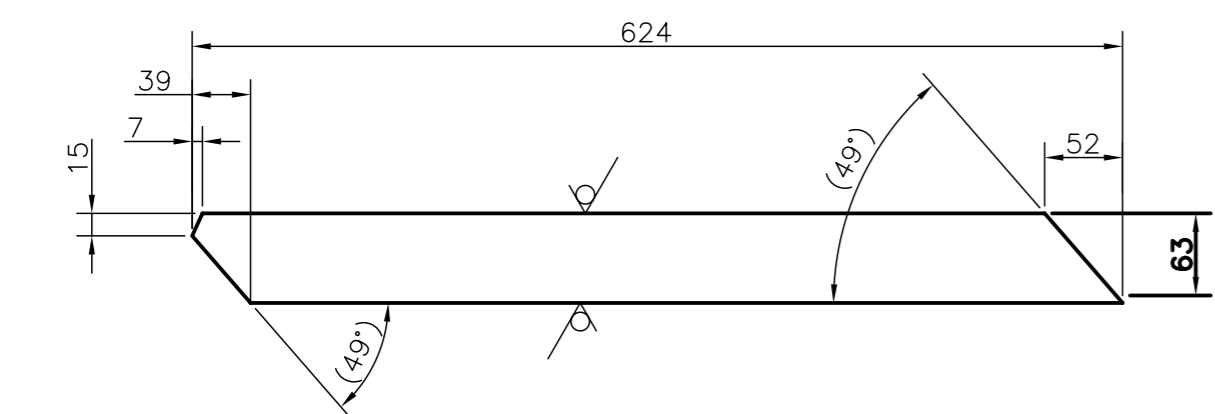
INVENTORY NO. SIGN & DATE REF. DRG NO.

CBOM NO. <b>21393801070</b>		STATUS OF DRG.		TYPE OF PRODUCT OR <b>TG-HW-0500-2</b>									
AGREED DEPT.	NAME	SIGN	DATE	NAME OF CUSTOMER/ PROJECT									
WT	SETHI	SD/-	13.1.2002										
EMT	KOHLI	SD/-	13.1.2002										
GRADE OF UNTOL. DIM.:-				DEPT. <b>TGE</b>									
M/CG- <del>W/C/M/P</del> AA 0230208				SCALE <b>1:20</b>									
WELDING- <del>A/B/C/D</del> AA621104				WEIGHT(Kg.) <b>4631.6</b>									
GAS CUTTING- T3'AA0621101				REF. TO ASSY. DRG. <b>2-139-38-01070</b>									
REV.	DATE	ALTERED	KN	REV.	DATE	ALTERED	KN	DEPT. <b>TGE</b>	SCALE <b>1:20</b>	WEIGHT(Kg.) <b>4631.6</b>	REF. TO ASSY. DRG. <b>2-139-38-01070</b>	ITEM NO.	NO.OF ITEMS
		CHECKED		01	14/2/03	CHECKED							
				CHANGES AS PER CHANGE ADVICE NO.TGE-2003-F134 DATED 14/01/03.				TITLE <b>FIXTURE FOR ROAD TRANSPORT</b>		DRAWING NO. <b>2-139-38-01071</b>		SHEET NO. <b>01</b> NO.OF SHEETS <b>01</b>	

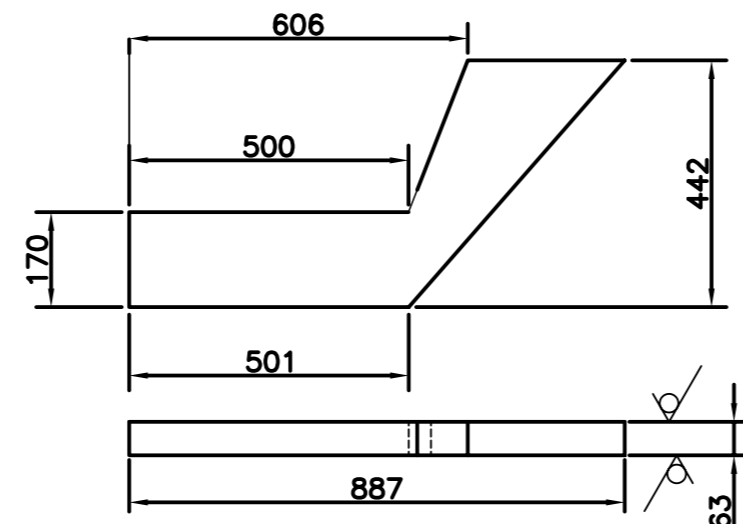


DRAWING NO. 2-139-38-01071

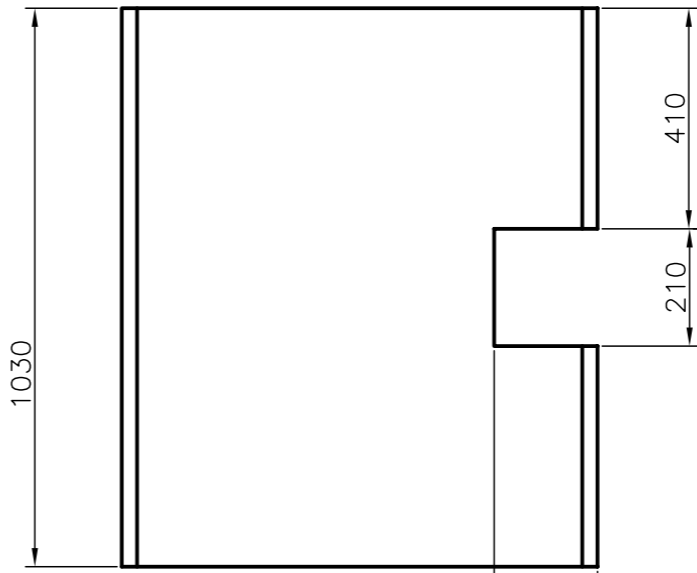
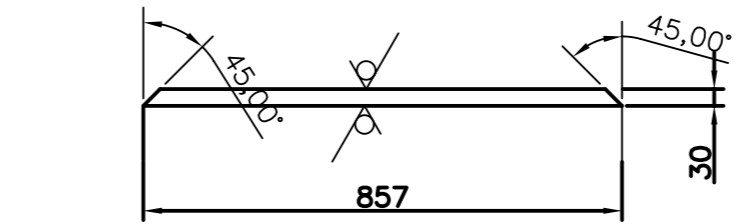
COPYRIGHT AND CONFIDENTIAL  
THE INFORMATION ON THIS DOCUMENT IS THE PROPERTY OF BHARAT HEAVY ELECTRICALS LIMITED  
IT MUST NOT BE USED DIRECTLY OR INDIRECTLY IN ANY WAY DETRIMENTAL TO THE INTEREST OF THE COMPANY.



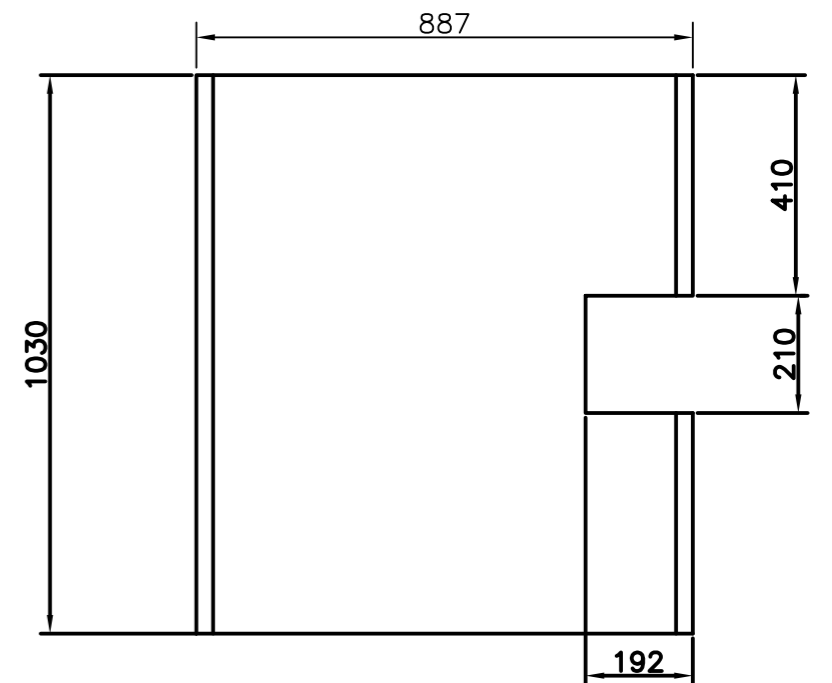
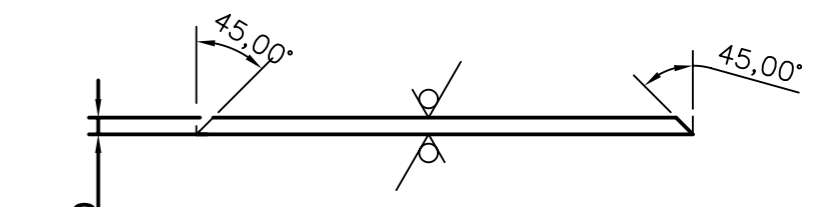
ITEM NO. 02  
WT. - 324.45 KG  
SCALE 1:5



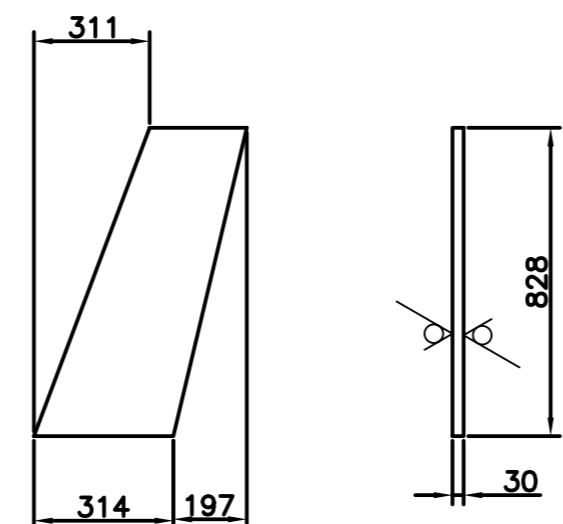
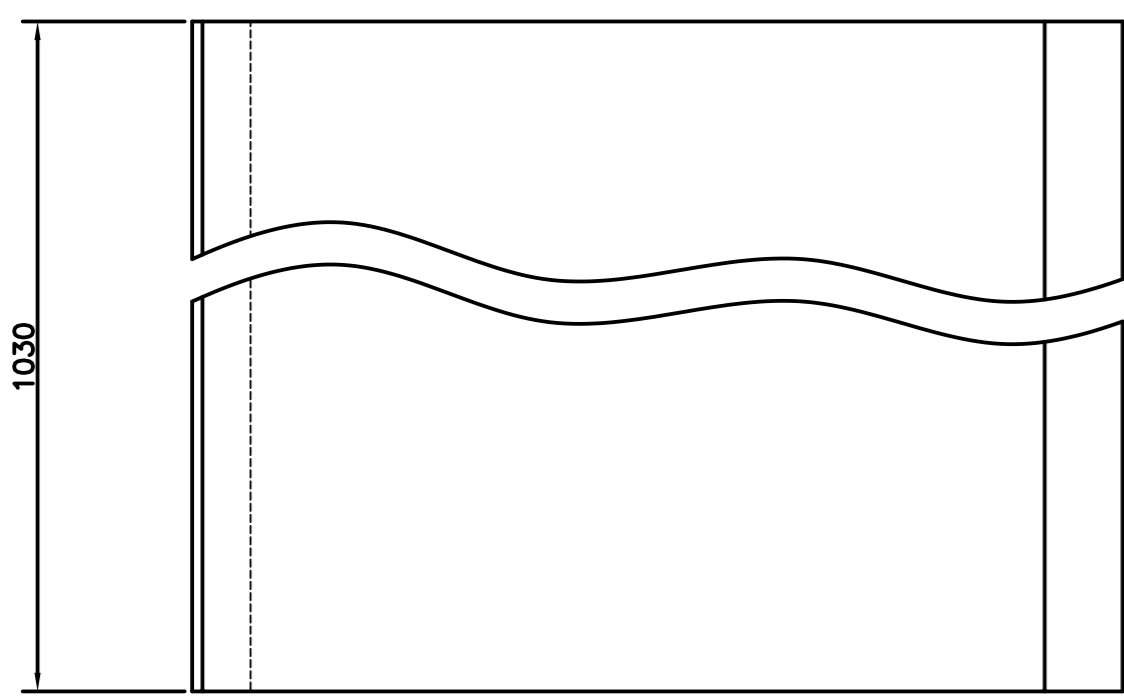
ITEM NO. 03  
WT. - 76.91 KG



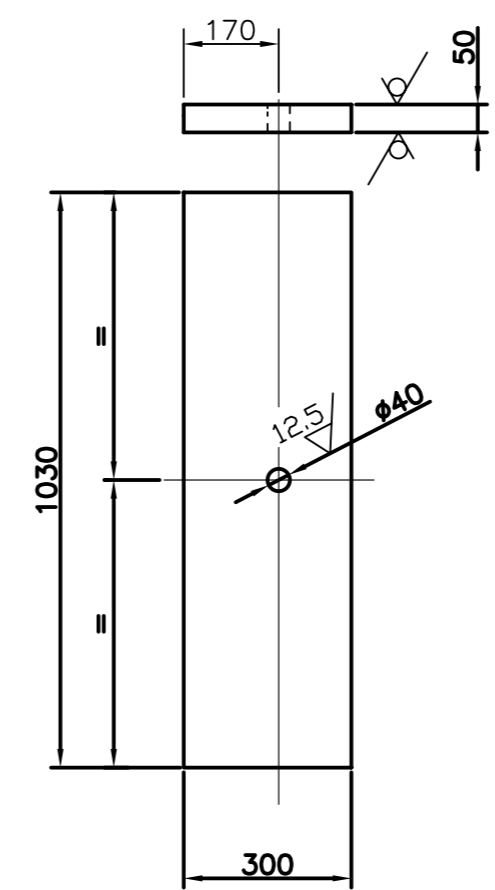
ITEM NO. 04  
WT. - 192.7 KG



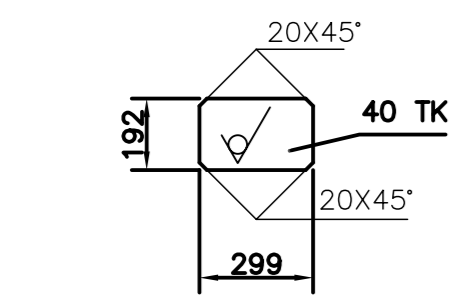
ITEM NO. 06  
WT. - 201.7 KG



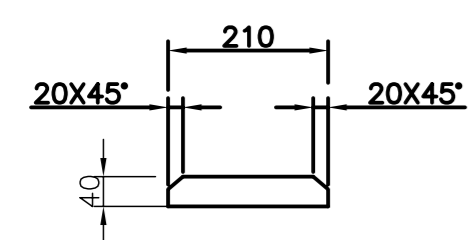
ITEM NO. 12  
WT. - 61.8 KG



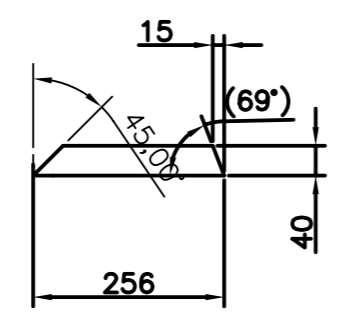
ITEM NO. 05  
WT. - 121.2 KG



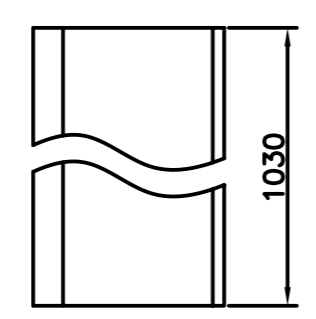
ITEM NO. 14  
WT. - 18.38 KG



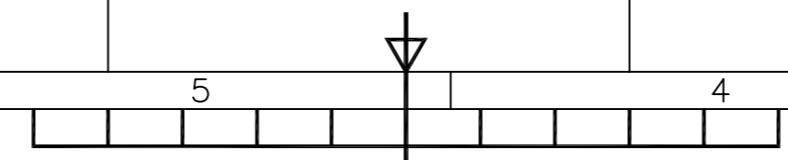
ITEM NO. 11  
WT. - 18.55 KG  
SCALE 1:10



ITEM NO. 07  
WT. - 85.40 KG  
SCALE 1:10

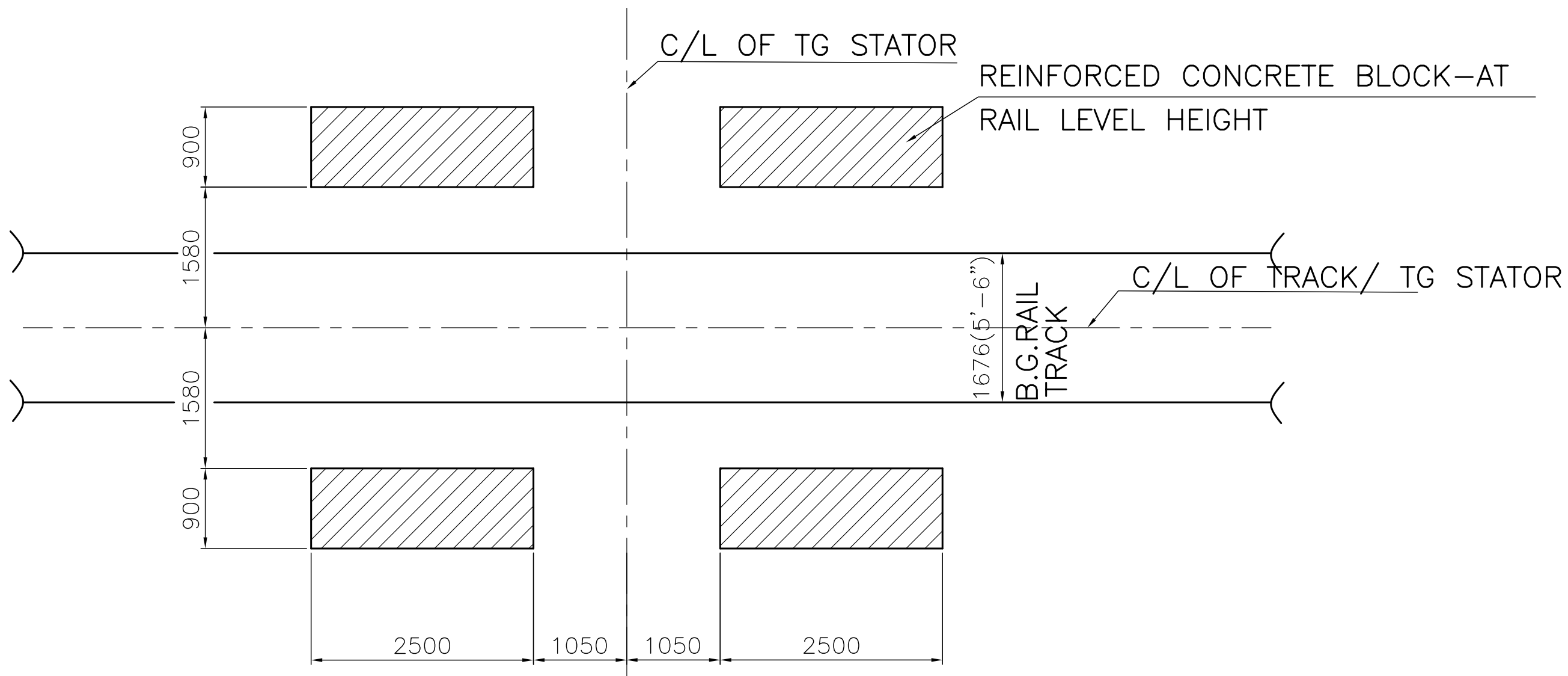


CBOM NO. <b>21393801070</b>		STATUS OF DRG.		TYPE OF PRODUCT OR NAME OF CUSTOMER/ PROJECT			
AGREED DEPT.	NAME	SIGN	DATE	<b>TG-HW-0500-2</b> BHARAT HEAVY ELECTRICALS LTD. HARDWAR			
WT	SETHI	SD/-	11.1.2002				
GRADE OF UNTOL. DIM.:-				DEPT. <b>TGE</b>			
M/CG- V/C/M/F AA 0230208				SCALE <b>1:20</b>			
WELDING A/B/C/D AA621104				WEIGHT(Kg.) <b>4631.6</b>			
GAS CUTTING-T3'AA0621101				REF. TO ASSY. DRG. <b>2-139-38-01070</b>			
REV.	DATE	ALTERED CHECKED	REV.	DATE	ALTERED KN sd/-	ITEM NO. <b>75, 77</b>	
			01	5.2.03	CHECKED KN sd/-	DRAWING NO. <b>2-139-38-01071</b>	
CHANGES AS PER CHANGE ADVICE NO. F-134.				TITLE <b>FIXTURE FOR ROAD TRANSPORT</b>			
				SHEET NO. <b>02</b> NO.OF SHEETS <b>02</b>			



DRAWING NO. 3-139-38-01027

COPYRIGHT AND CONFIDENTIAL  
 THE INFORMATION ON THIS DOCUMENT IS THE PROPERTY OF  
 BHARAT HEAVY ELECTRICALS LIMITED . IT MUST NOT BE USED DIRECTLY  
 OR INDIRECTLY IN ANY WAY DETRIMENTAL TO THE INTEREST OF THE COMPANY.



1. MAX LOAD ON EACH BLOCK SHALL BE 125T SPRED OVER ACTUAL LOADING AREA OF 1.6 M<sup>2</sup>
2. 45 METRES LONG TRACK ON EITHER SIDE OF THE C/L OF TG STATOR SHOULD BE STRAIGHT AND HORIZONTALLY LEVELLED.

INVENTORY NO.	SIGN & DATE	REF. DRG NO.	CBOM NO.		STATUS OF DRG.	TYPE OF PRODUCT		300 TONNE SPECIAL WAGON				
			-			OR		(LOADING/UNLOADING)				
GRADE OF UNTOL. DIM.:-			AGREED DEPT.	NAME	SIGN	DATE	NAME OF CUSTOMER/ PROJECT		BHARAT HEAVY ELECTRICALS LTD. HARDWAR			
M/CG- V/C/M/F AA 0230208						DEPT. TGE		SCALE	WEIGHT(Kg.)	REF. TO ASSY. DRG.	ITEM NO.	NO.OF ITEMS
WELDING-A/B/C/D-AA621104						CODE 4233		1:50	-	-	-	75, 77
GAS CUTTING-'T3'AA0621101						TITLE		GROUND FORTIFICATION PLAN FOR LOADING		DRAWING NO.		NO.OF VAR.
REV. DATE	ALTERED PNM	SD/-	REV. DATE	ALTERED PNM	SD/-	/UNLOADING OF 500MW TG STATOR		1		3		73, 74
02 16.3.09	CHECKED AS	SD/-	01 3.9.82	CHECKED KSS	SD/-	T.R. REVISED IN LINE WITH DISCUSSING WITH PED REPRESENTATIVE ON 3.9.82		-		-		75, 24
DRG SUPERSEDED WITHOUT CHANGE.						SHEET NO.		1		NO.OF SHEETS		1