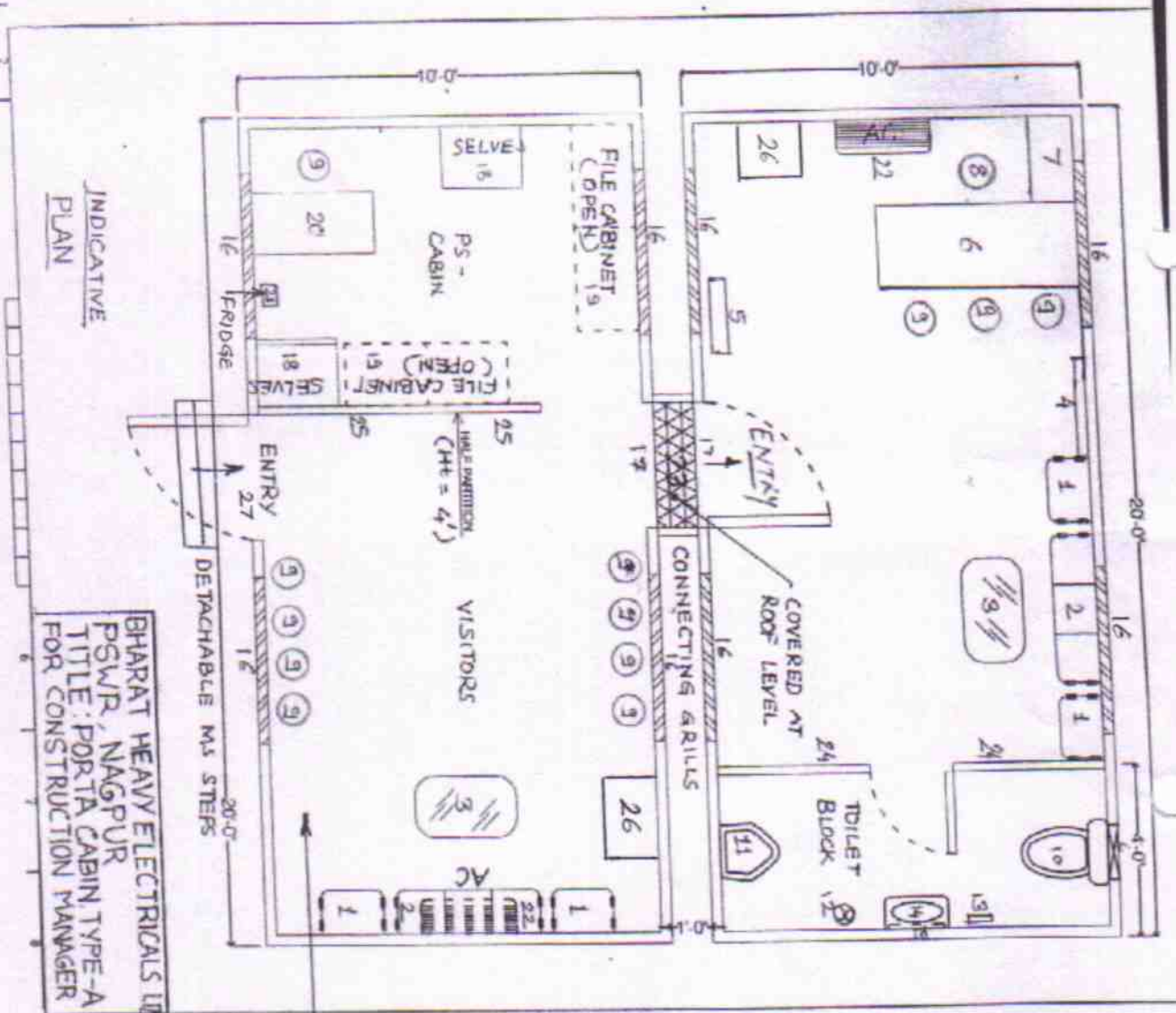


SKETCH
1 of 9



INDICATIVE
PLAN

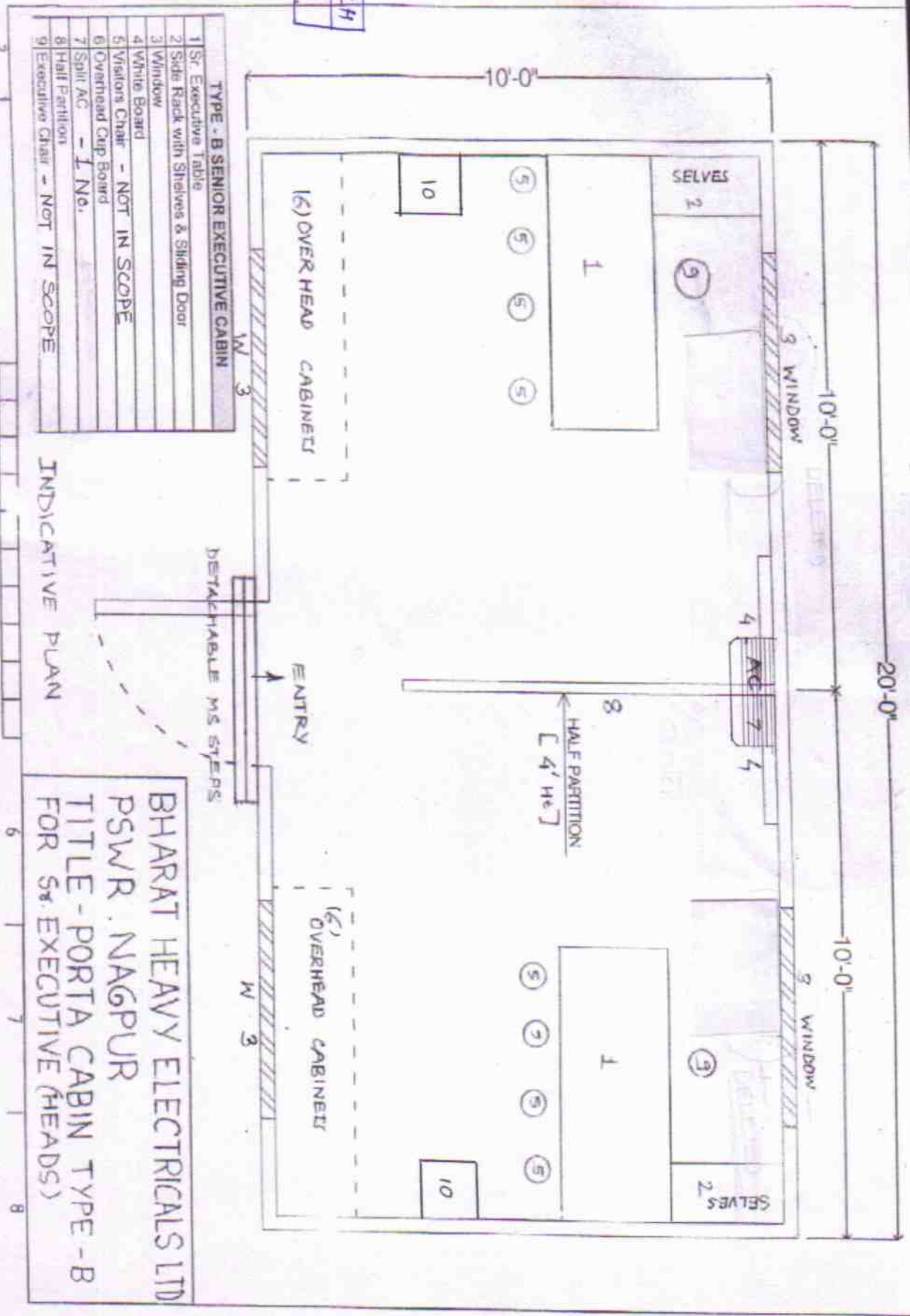
BHARAT HEAVY ELECTRICALS LTD
PSWR, NAGPUR
TITLE: PORTA CABIN TYPE-A
FOR CONSTRUCTION MANAGER

TYPE - A CONSTRUCTION MANAGER SIZE 2X(20'X10'X8.5')	
1	Sofa Single Seat - NOT IN SCOPE
2	Sofa Three Seat - NOT IN SCOPE
3	Centre Table - NOT IN SCOPE
4	White Board
5	Perforated Board
6	Sr. Executive Table
7	Side Rack with shelves, sliding door type
8	Sr. Executive Chair - NOT IN SCOPE
9	Visitor Chair - NOT IN SCOPE
10	WC Western Type
11	Urinal Pot
12	Exhaust fan
13	Towel Hanger
14	Wash Basin
15	Mirror
16	Window
17	Sliding Door
18	Almirah with Top Floor Fax
19	File Rack
20	PA Table
21	Fridge - 1 No.
22	Split AC - 2 No.
23	Detachable Bridge
24	Full Partition
25	Half Partition
27	Door

CHAIRS NOT IN SCOPE

26. INDICATIVE LOCATION OF CONDENSOR UNIT FOR SPLIT AC (OPEN AIR ARRANGEMENT)

SKETCH
2 of 9

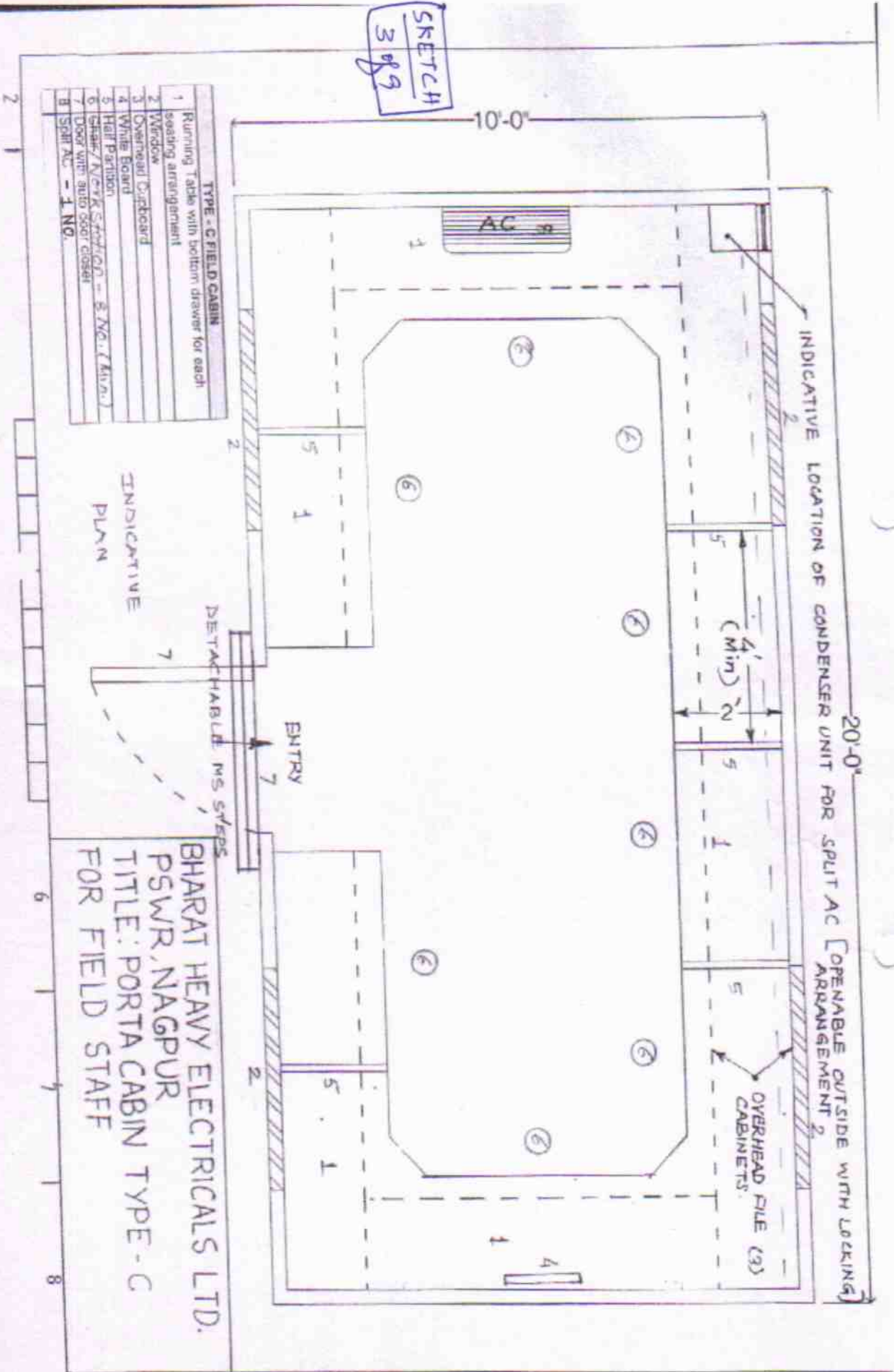


BHARAT HEAVY ELECTRICALS LTD
PSWR, NAGPUR
TITLE - PORTA CABIN TYPE - B
FOR SR. EXECUTIVE (HEADS)

10 INDICATIVE LOCATION OF CONDENSOR UNIT FOR SPLIT AC (OPENABLE OUTSIDE WITH LOCKING ARRANGEMENT)

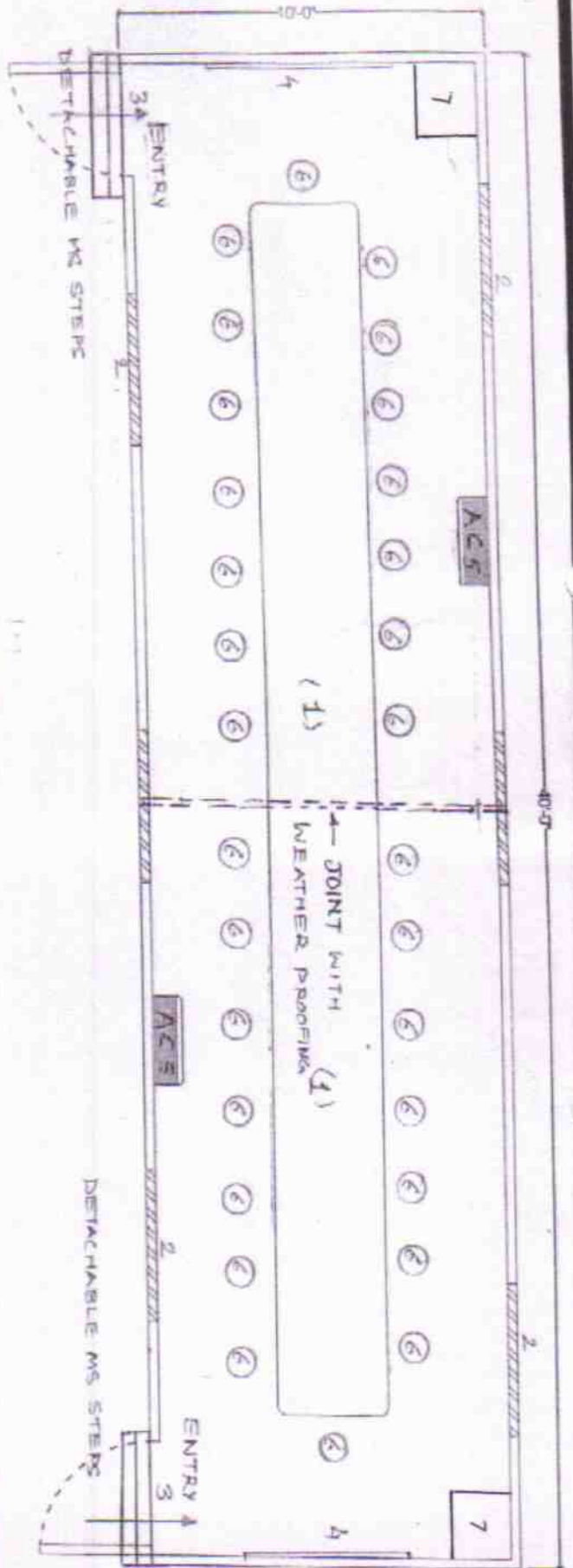
TYPE - B SENIOR EXECUTIVE CABIN	
1	Sr. Executive Table
2	Side Rack with Shelves & Sliding Door
3	Window
4	White Board
5	Visitors Chair - NOT IN SCOPE
6	Overhead Cup Board
7	Split AC - I No.
8	Half Partition
9	Executive Chair - NOT IN SCOPE

SKETCH
3 of 3



TYPE - C FIELD CABIN	
1	Running Table with bottom drawer for each seating arrangement
2	Window
3	Overhead Cupboard
4	White Board
5	Half Partition
6	Chair / N/C/ K Seating - 8 No. (Min.)
7	Door with auto door closer
8	Split AC - 1 No.

BHARATI HEAVY ELECTRICALS LTD.
 PSWR, NAGPUR
 TITLE: PORTA CABIN TYPE - C
 FOR FIELD STAFF



SKETCH
U 0/9

	TYPE - D (40' x 10' x 8')
1	Conference Table
2	Windows
3	Doors
4	White Board
5	Split Airconditioners - 2 No.
6	Chairs - NOT IN SCOPE
7	INDICATIVE LOCATION OF CONDENSER UNIT FOR SPLIT AC [OPENABLE OUTSIDE WITH LOCKING ARRANGEMENT]

INDICATIVE PLAN
2 UNITS OF 20' x 10' [DETACHABLE TYPE]
WITH PROPER WEATHER PROOF ON ROOF & SIDES

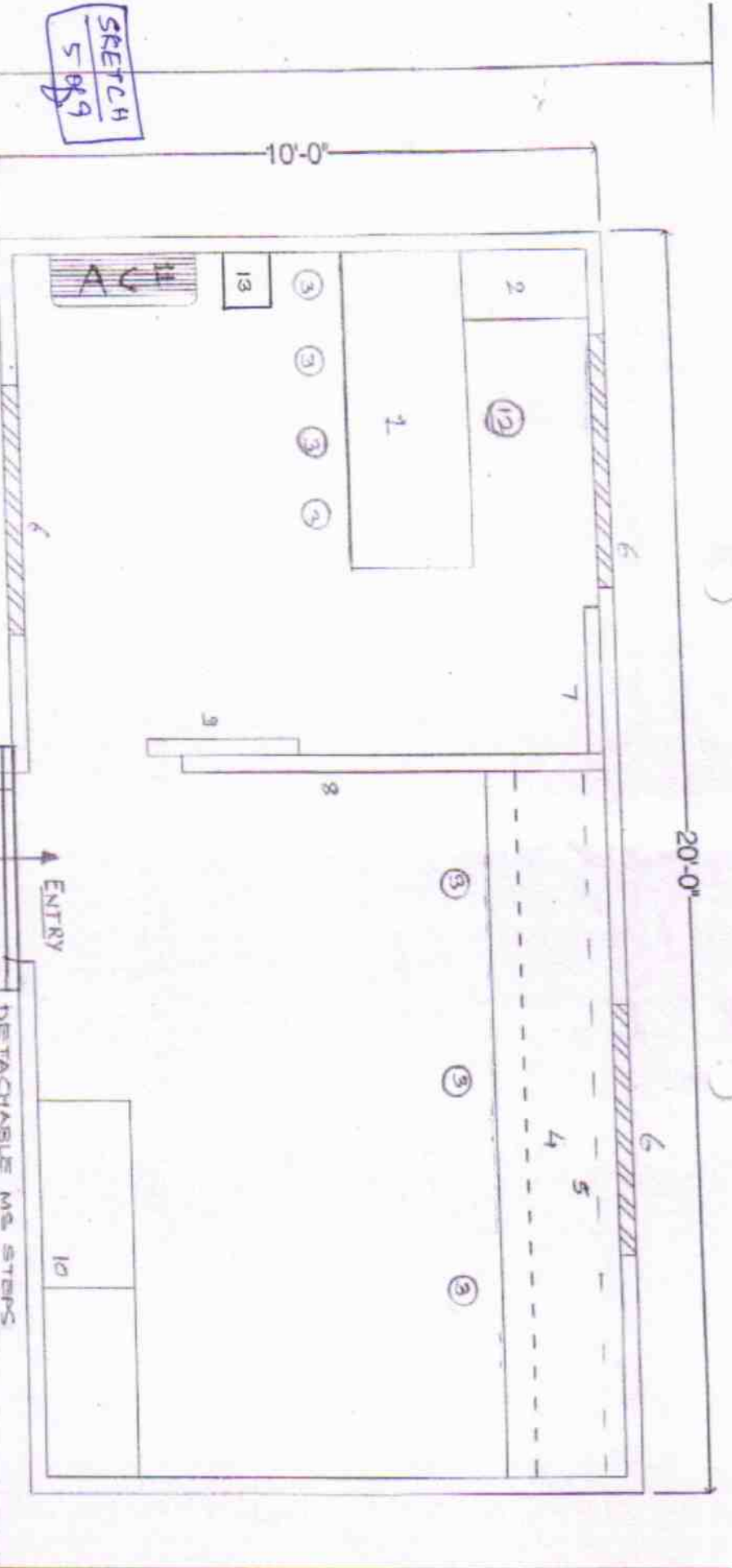
BHARAT HEAVY ELECTRICALS LTD
PSWR, NAGPUR
TITLE: PLAN OF PORTA CABIN
TYPE-D FOR CONFERENCE

SKETCH
5/8/9

- TYPE - E FINANCE CABIN**
SIZE 20'X10'X8.0'
- 1 Sr. Executive Table with drawer
 - 2 Side Rack with shelves and sliding door
 - 3 Visitor Chairs - Not IN SCOPE
 - 4 Running table with drawer
 - 5 Overhead Cupboard
 - 6 Windows
 - 7 White Board
 - 8 Full Partition
 - 9 Sliding Door lockable
 - 10 Almirah upto ceiling height with shelves
 - 11 Spill AC - 1 No.
 - 12 Executive Chair - Not IN SCOPE

INDICATIVE LOCATION OF CONDENSOR UNIT FOR SPLIT AC (OPENABLE OUTSIDE WITH LOCKING ARRANGEMENT)

BHARAT HEAVY ELECTRICALS LTD.
PSMR, NAGPUR
TITLE: PORTA CABIN TYPE - E
FOR SITE FINANCE



ENTRY

DETACHABLE METAL STEPS

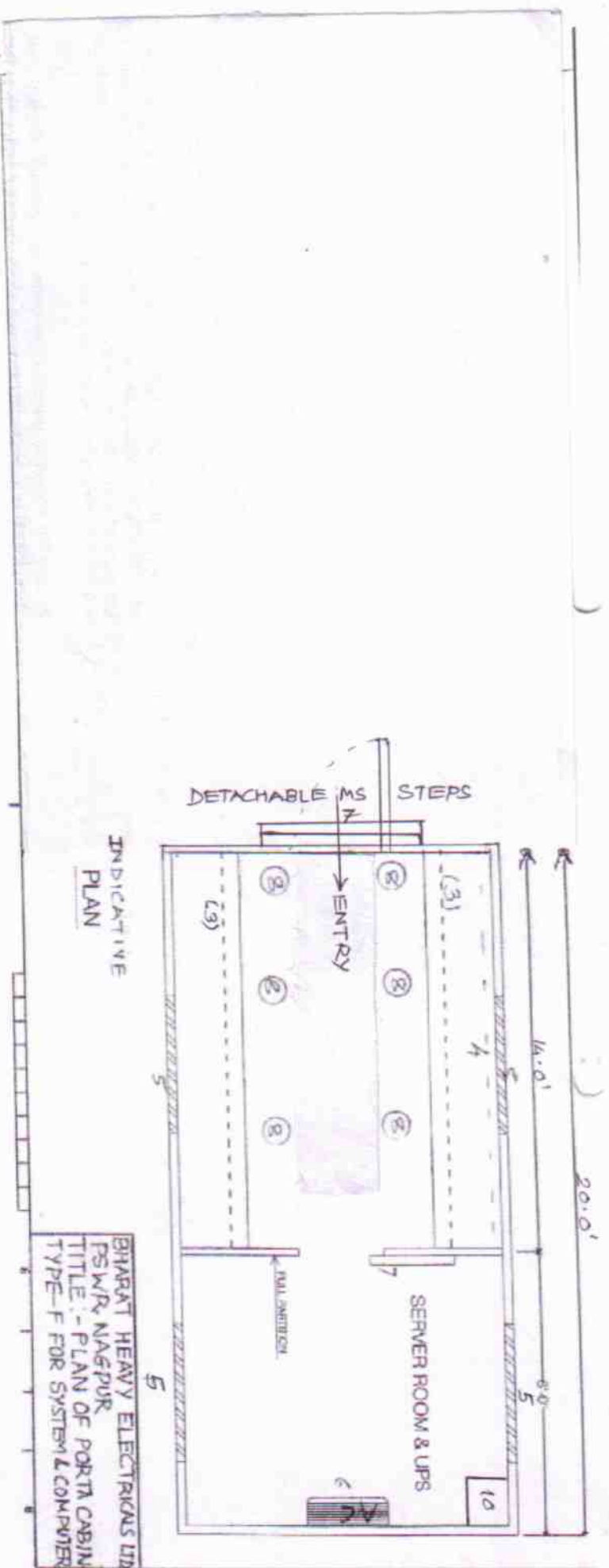
20'-0"

10'-0"

SKETCH
6 of 9

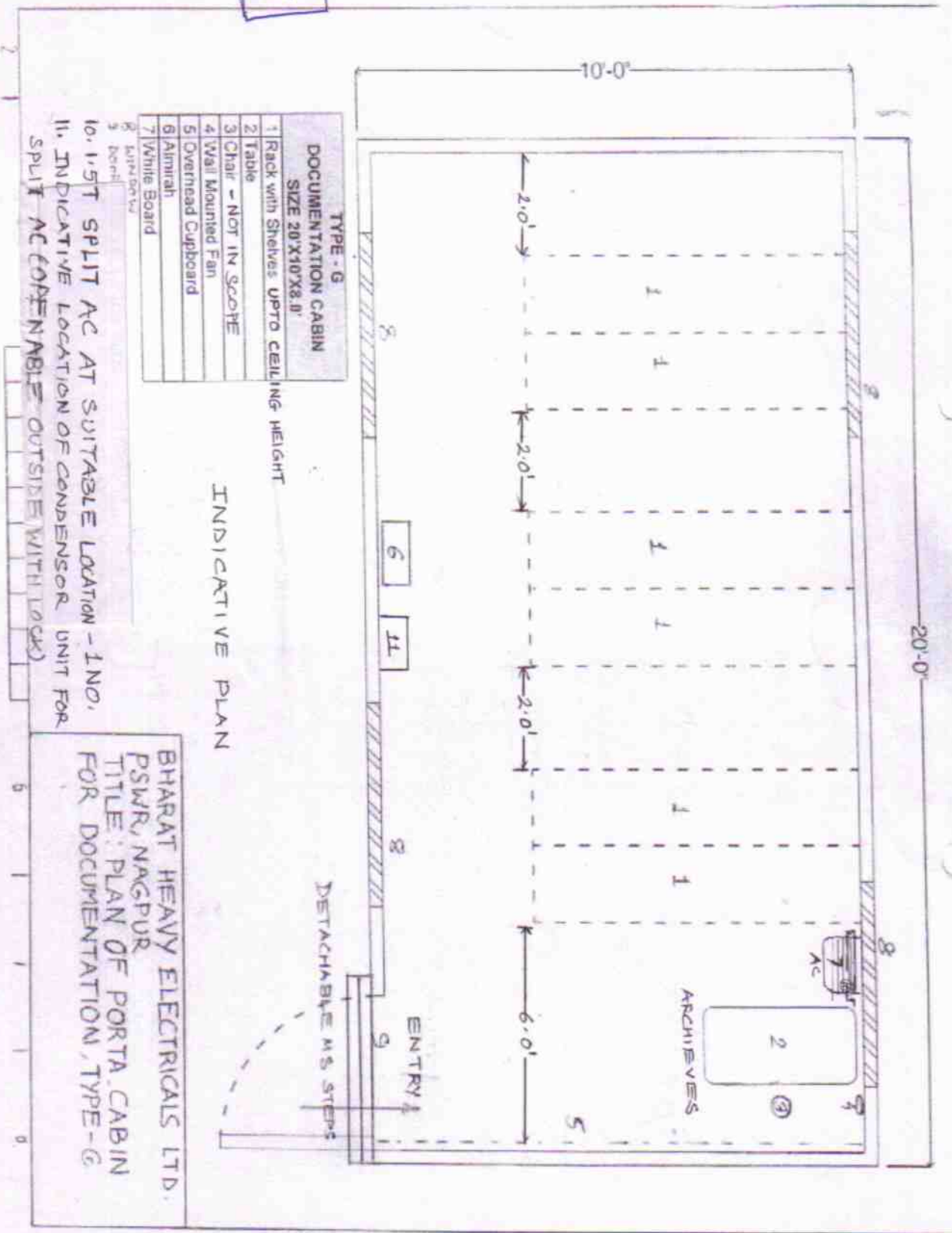
TYPE - F SYSTEM & COMPUTER CABIN	
1	Table
2	Slide Rack
3	Computer Table
4	Overhead Cupboard
5	Window
6	Split AC - LNO.
7	Door
8	Chair - NOT IN SCOPE
9	Partition

10. INDICATIVE LOCATION OF CONDENSOR UNIT FOR SPLIT AC
(OPENABLE OUTSIDE WITH LOCKING ARRANGEMENT)



SHARAT HEAVY ELECTRICALS LTD
FSI W/R, NAGPUR.
TITLE: - PLAN OF PORTA CABIN
TYPE - F FOR SYSTEM & COMPUTER

SKETCH
→ 8/9



TYPE - G	
DOCUMENTATION CABIN	
SIZE 20'X10'X8.0'	
1	Rack with Shelves UPTO CEILING HEIGHT
2	Table
3	Chair - NOT IN SCOPE
4	Wall Mounted Fan
5	Overhead Cupboard
6	Almirah
7	White Board
8	Split AC
9	Door

INDICATIVE PLAN

- 10. 1.5T SPLIT AC AT SUITABLE LOCATION - 1NO.
- 11. INDICATIVE LOCATION OF CONDENSOR UNIT FOR SPLIT AC (OPENABLE OUTSIDE WITH LOCK)

NOTE:- LAYOUT TO BE MODIFIED SUITABLY

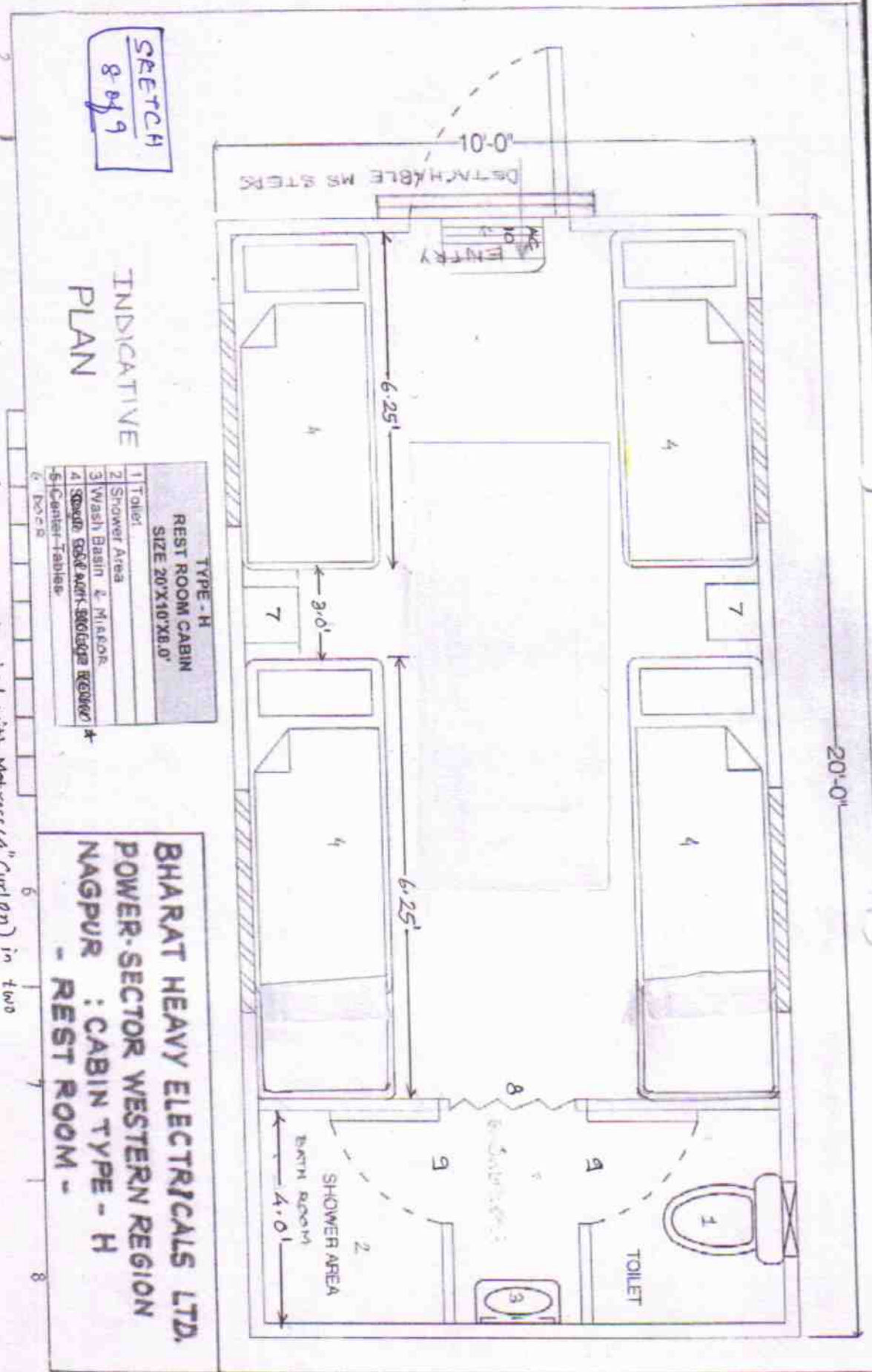
BHARAT HEAVY ELECTRICALS LTD.
PSMR, NAGPUR
TITLE: PLAN OF PORTA CABIN
FOR DOCUMENTATION, TYPE-G

SKETCH
8-8-79

INDICATIVE
PLAN

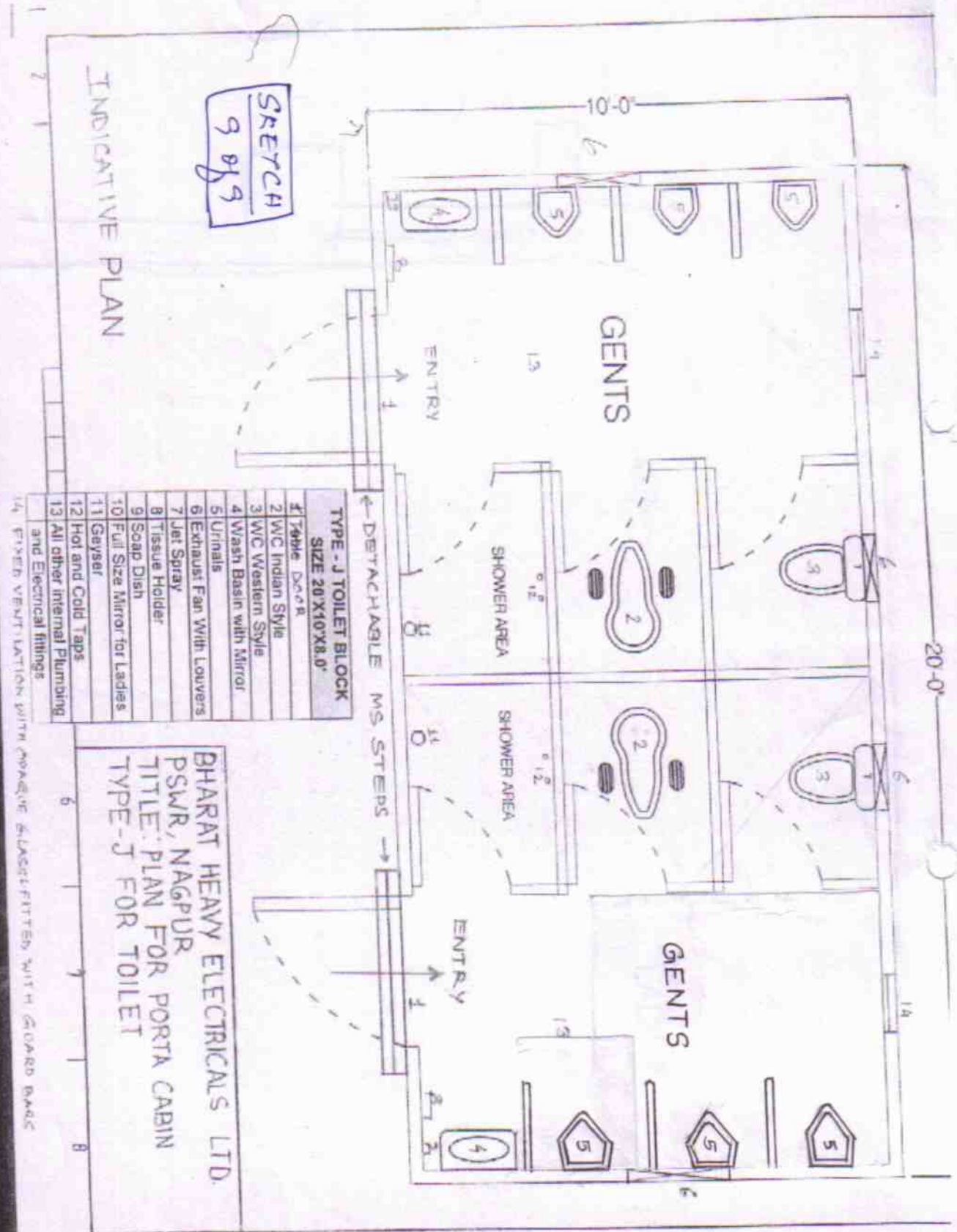
TYPE - H REST ROOM CABIN SIZE 20' X 10' X 8.0'	
1	Toilet
2	Shower Area
3	Wash Basin & Mirror
4	Storage Bed (4" Mattress Required)
5	Center Table
6	Door

BHARAT HEAVY ELECTRICALS LTD.
POWER-SECTOR WESTERN REGION
NAGPUR : CABIN TYPE - H
- REST ROOM -



- (4) * Hollow pipe bed with Mattress (4" Curion) in two tier system with black emulsion paint.
- (7) Self locking Selves with ply (As per 0.4 cabinets spec.)
- (11) CONDENSING UNIT FOR SPLIT AC TO BE PROVIDED AT SUITABLE LOCATION

- (8) Sliding door
- (9) PVC Board
- (10) 1-ST SPLIT AC AT SUITABLE LOCATION - 1 No.



SKETCH
9 of 9

INDICATIVE PLAN

TYPE - J TOILET BLOCK	
SIZE 20'X10'X8.0'	
1	Table Door
2	WC Indian Style
3	WC Western Style
4	Wash Basin with Mirror
5	Urinals
6	Exhaust Fan With Louvers
7	Jet Spray
8	Tissue Holder
9	Soap Dish
10	Full Size Mirror for Ladies
11	Geysier
12	Hot and Cold Taps
13	All other Internal Plumbing and Electrical fittings
14	FIBER VENTILATION WITH MOVING SLATS FITTED WITH GUARD BARS

BHARAT HEAVY ELECTRICALS LTD.
PSMR, NAGPUR
TITLE: PLAN FOR PORTA CABIN
TYPE-J FOR TOILET

14 FIBER VENTILATION WITH MOVING SLATS FITTED WITH GUARD BARS