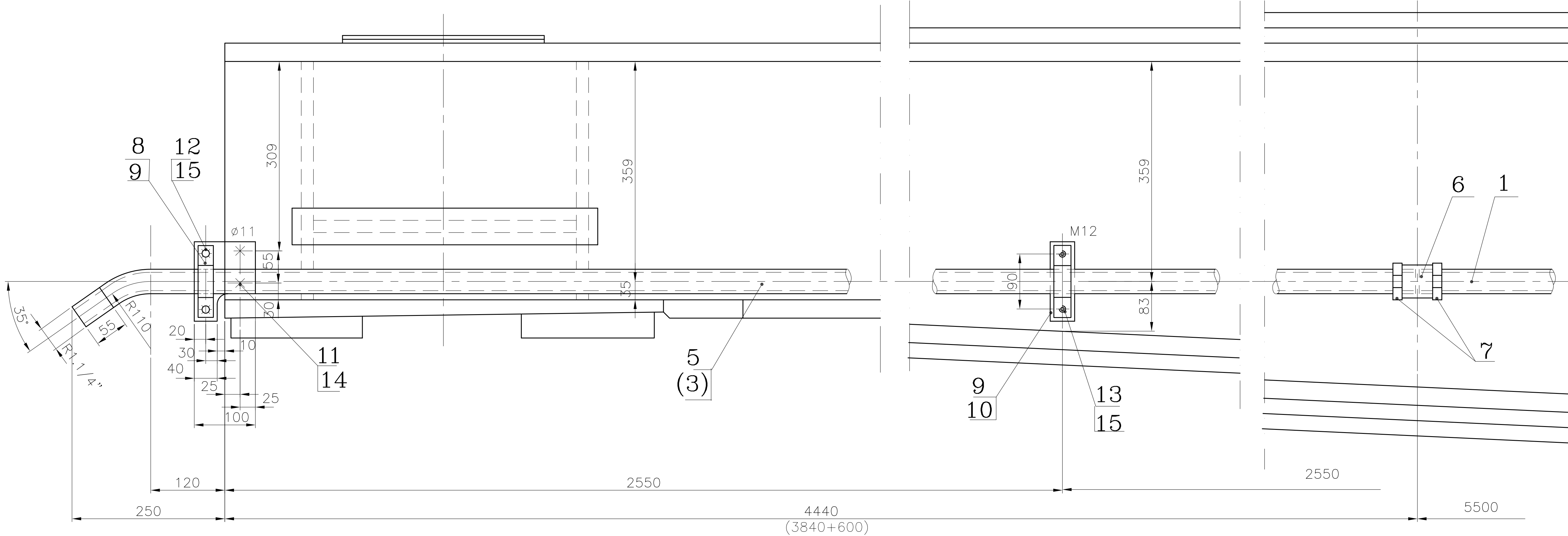
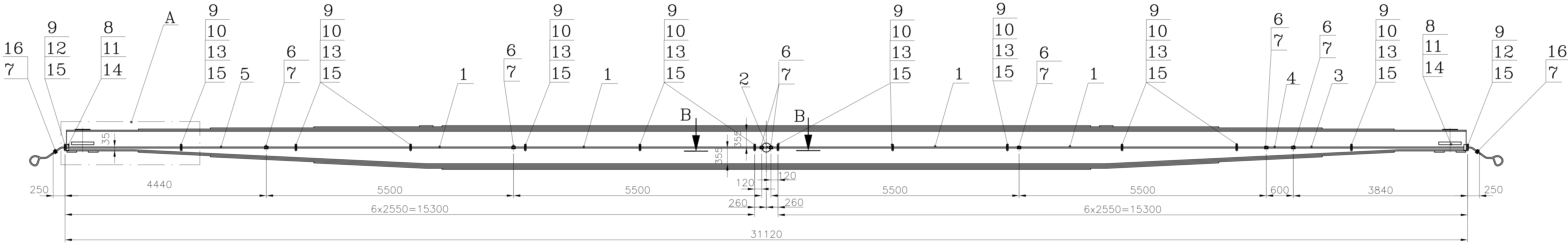
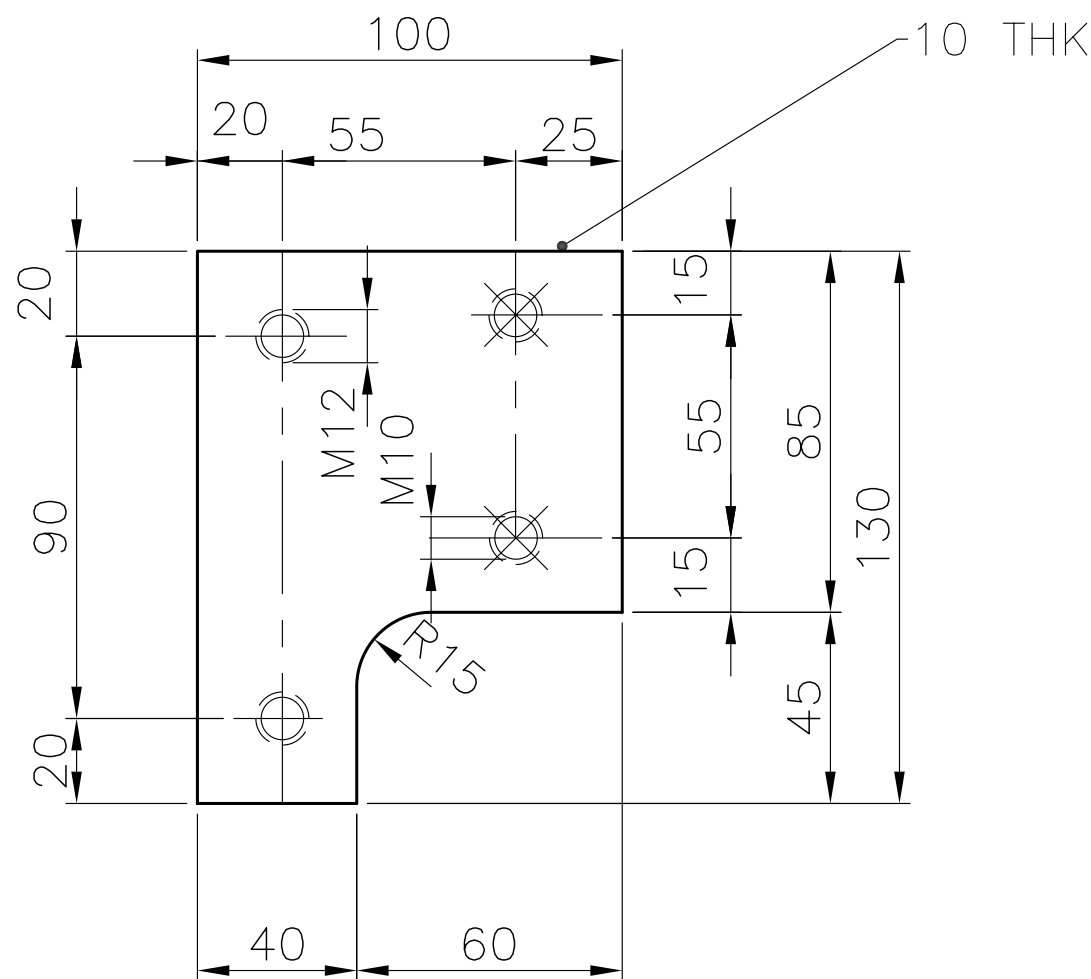


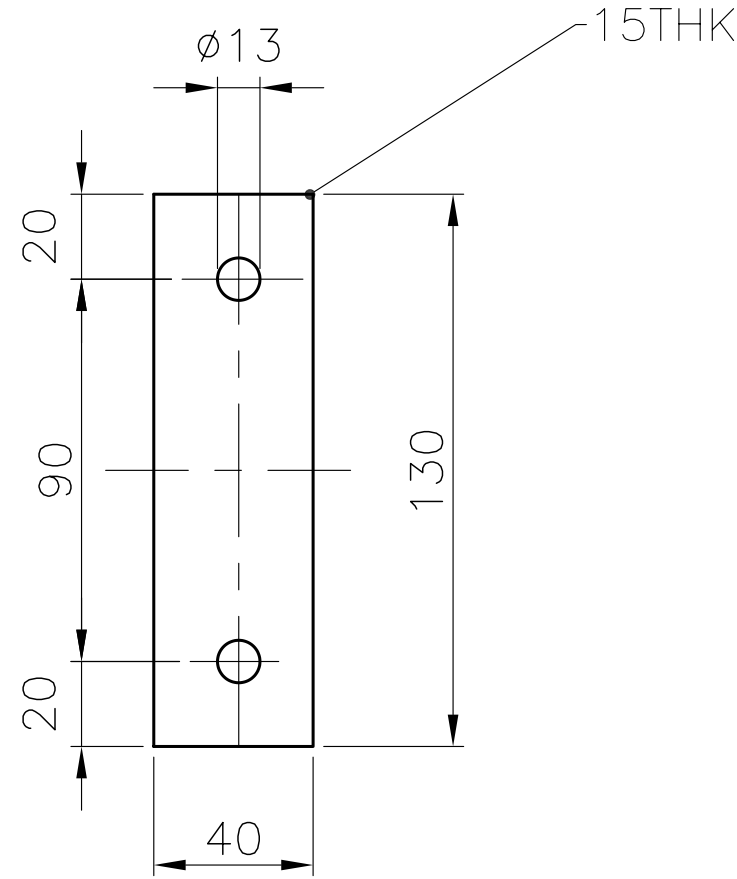
99110-88-681-1
1-139-38-01168
DRAWING NO.



DETAIL A
SCALE 1:5



STIFFENING PLATE
ITEM 8
SCALE 1:2.5

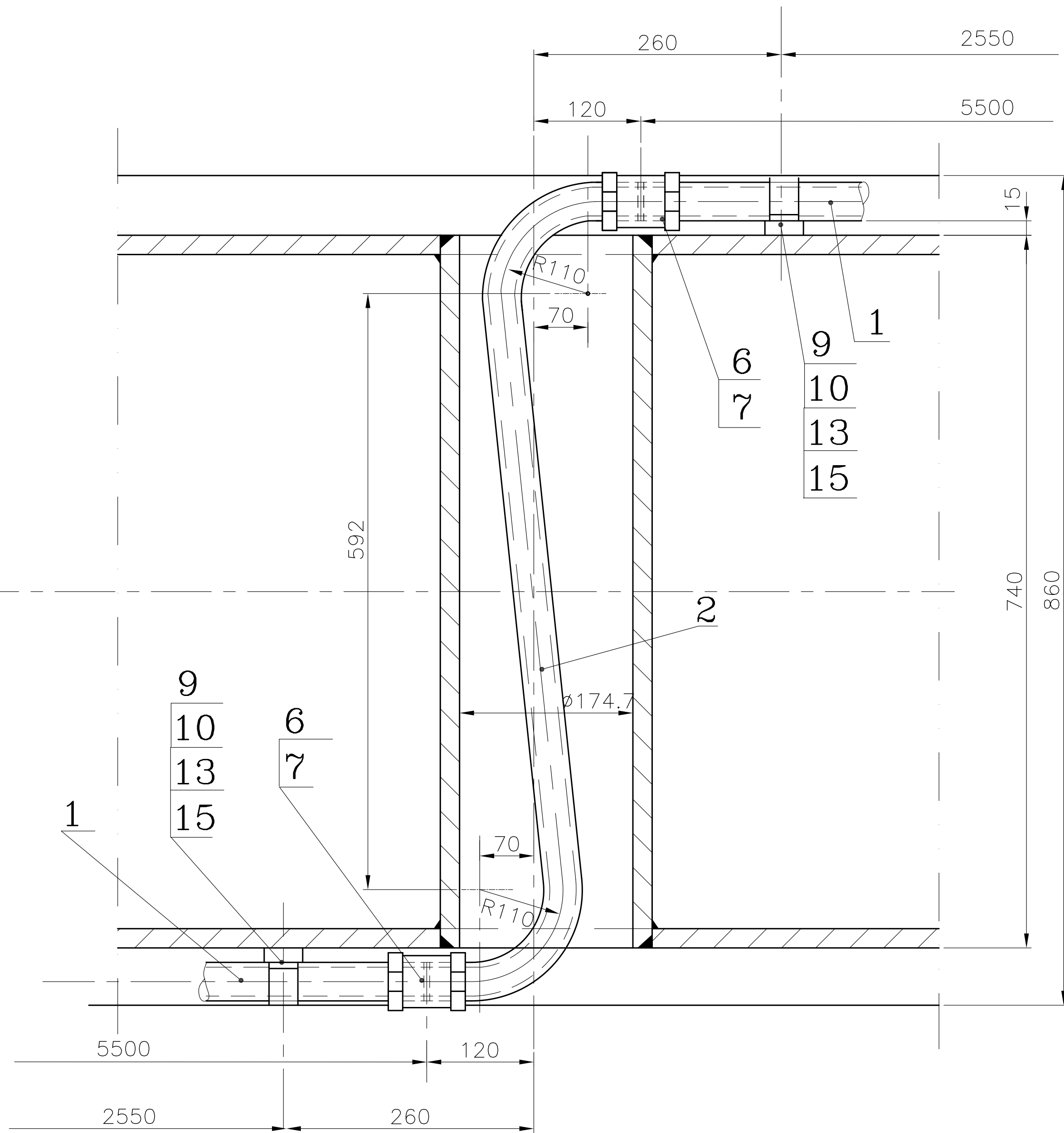


SUPPORT
ITEM 10
SCALE 1:2.5

16	2	BRAKE COUPLING 1"XR 1 1/2"	DB	26985a
15	28	WASHER 12.5	ST	DIN 6788
14	4	WASHER 10.5	ST	DIN 6798
13	24	HEXAGONAL BOLT 12X45	4D	DIN 558
12	4	HEXAGONAL BOLTM12X20	4D	DIN 558
11	4	HEXAGONAL BOLT M10X30	4D	DIN 558
10	12	SUPPORT	WRST37-2	40.15,,130
9	14	PIPE SHELL	ST	DIN 1593
8	2	STIFFENING PLATE	WRST37-2	100.10,,130
7	16	HEX. NUT BR 1 1/2"	ST	DIN 431
6	7	SLEEVE R 1 1/2"	ST	DIN 1564
5	1	PIPE Ø42.4X4.05 , L=4700	ST35	1 1/2" ...~4700
4	1	PIPE Ø42.4X4.05 , L=600	ST35	1 1/2" ...~600 "
3	1	PIPE Ø42.4X4.05 , L=4100	ST35	1 1/2" ...~4100 "
2	1	PIPE Ø42.4X4.05 ,L=1100	ST35	1 1/2" ...~1100 "
1	4	PIPE Ø42.4X4.05 , L=5500	ST35	1 1/2" ...~5500 "
ITEM No.	QTY.	DESCRIPTION	MATERAIL	SIZE

TECHNICAL REQUIREMENTS :-

- BLOW THE PIPES AFTER BENDING WITH COMPRESSED AIR.
- MARK IDENTIFICATION ACCORDING TO HW 0400.397.



SECTION B-B
SCALE 1:5

CBOM NO. -		STATUS OF DRG.		TYPE OF PRODUCT OR NAME OF CUSTOMER/ PROJECT				660 MW TG STATOR TRANSPORT															
AGREED DEPT.	NAME	SIGN	DATE	REV.		DATE	ALTERED CHECKED	DEPT. TGE		SCALE	WEIGHT(Kg.)	REF. TO ASSY. DRG.		ITEM NO.		NO.OF SHEETS							
M/CG- V/C/M/F AA 0230208				REV.		DATE	ALTERED CHECKED	4033		1:50	-	-		21, 23, 24		22, 23, 24							
GRADE OF UNTOL. DIM.:- M/CG- V/C/M/F AA 0230208 WELDING-A/B/C/D-AA621104 GAS CUTTING-T3'AA0621101								TITLE ARRANGEMENT OF COMPRESSED AIR BRAKE LINES								DRAWING NO. 1-139-38-01168							
REV. DATE								REV. DATE								SHEET NO. 1				NO.OF SHEETS 1			