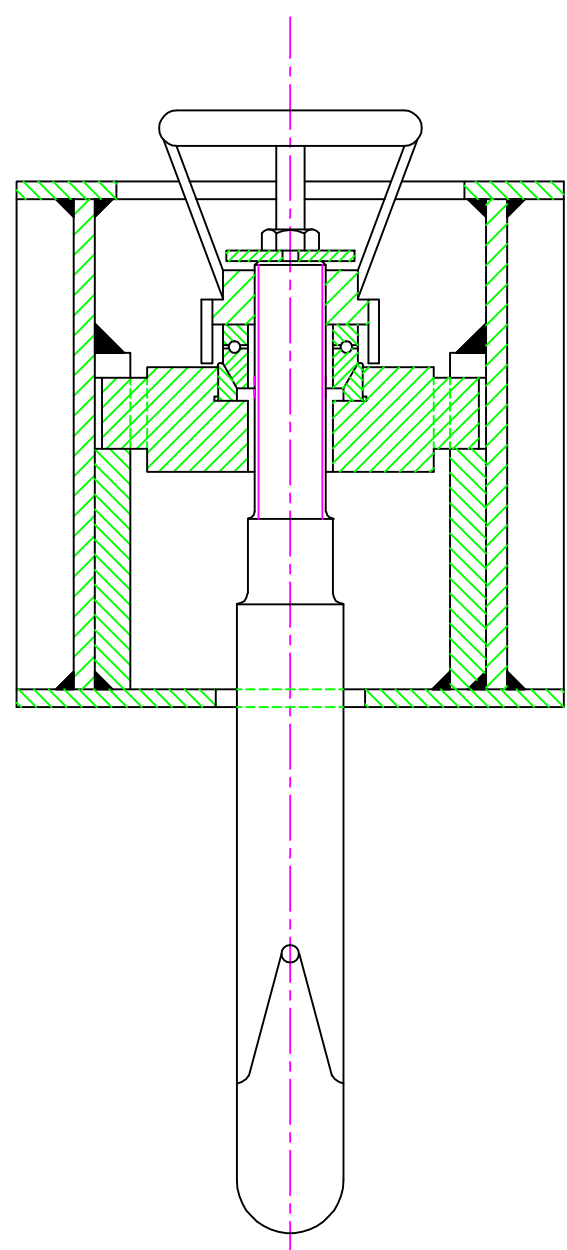
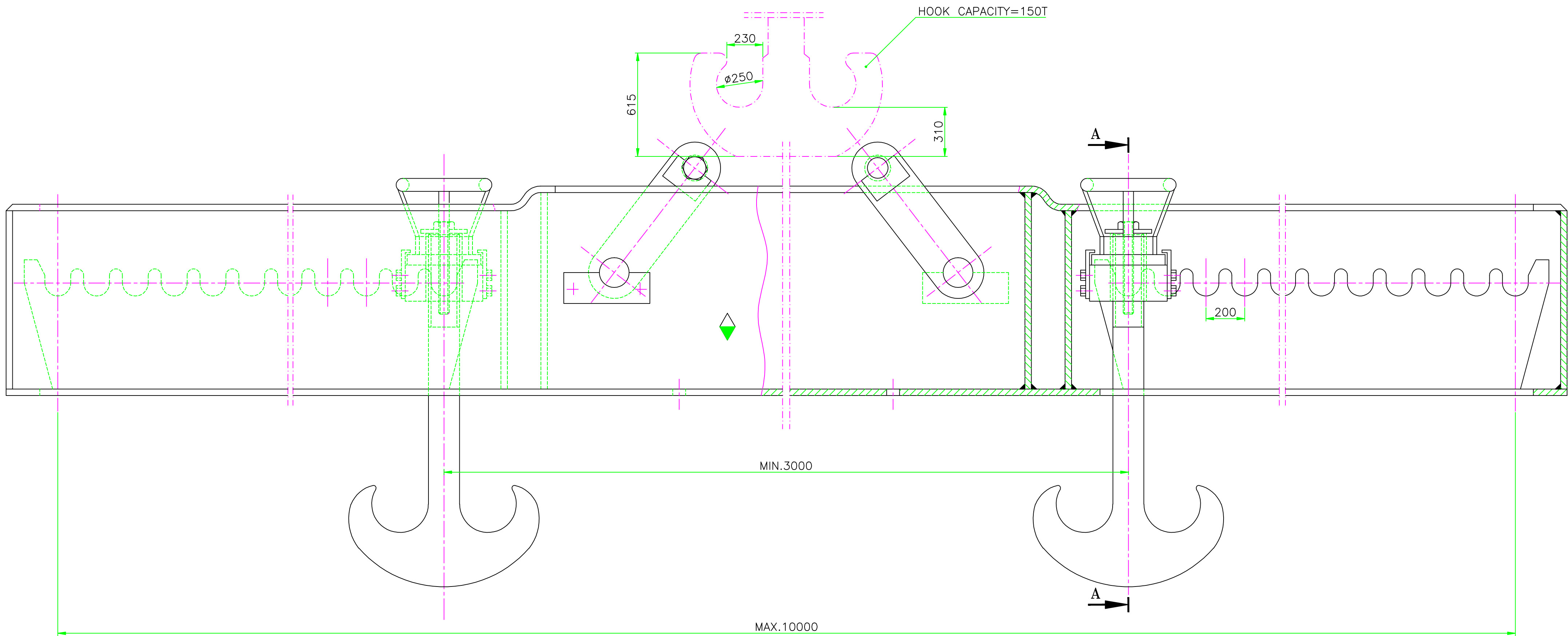
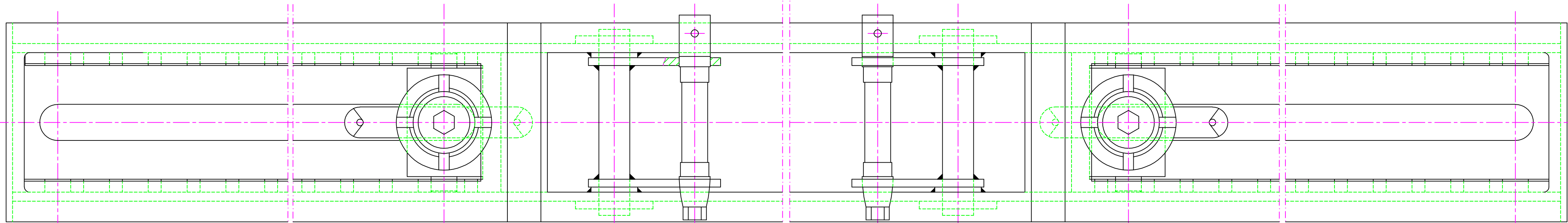


JTD/SK/0485  
DRAWING No.



SECTION A-A



PAINT  
120 TON CAPACITY  
BEAM(TG-ROTOR)

LIFTING CAPACITY=120T

NOTE:-

1. THE BEAM IS REQUIRED FOR TRANSPORTING ROTORS BY ONE (150 TON) CRANE. CRANE HOOK IS TO BE DIRECTLY INSERTED IN THE LIFTING BARRELS OF TRAVERSE BEAM.
2. SEE ALSO TECHNICAL REQUIREMENTS AS PER STANDARD TL-70035.

VAR.00	REMARKS	ITEM No.	DESCRIPTION	STD.	DRAWING No.	MATERIAL CODE	A	UNIT WEIGHT	QTY.	REV.	NO. OF VAR.
						VAR.	MATERIAL SPECN.	C			

GMS No./GR.SP.No.		STATUS OF DRG.		TYPE OF PRODUCT		COMP. DRG. No.		M/C TOOL TRANS No.		REF. DRG. No.	
0-136-06-01031		THDF-115/67		THDF-115/67/127		0-136-06-01031		THDF-115/67/127		JTD/SK/57	
DESIGN ORDER No.		MODEL No.		DR. NAME		SIGN.		DATE		No. OF VAR.	
THDF-115/67/127				VINAY		Sd/-		7.2.09			
APD		SKB		GKA		Sd/-		7.2.09			
REV.		DATE		ALTERED		CHECKED		REV.		DATE	
DEPT.		JTE		SCALE		WEIGHT(Kg.)		REF. TO ASSY. DRG.		ITEM No.	
209				N.T.S							
TITLE		SCHEMATIC DIAGRAM OF LIFTING BEAM FOR TG-ROTOR(120T)		DRAWING No.		JTD/SK/0485		REV.		SHEET No. 01	
										No. OF SHEET 01	
										SIZE A 1	