



भारत हेवी इलेक्ट्रिकल्स लिमिटेड

(भारत सरकार का उपक्रम)

BHARAT HEAVY ELECTRICALS LIMITED

(A Govt. of India Undertaking)

TCN - 02

Ref: PSER:SCT:SDG:C1274:11:TCN-02

Date: 25-11-2011

Sub	Tender Change Notice (TCN- 02).	
Job	(i) Package-C: Civil,Structural,Architectural etc of Civil Superstructure Work of 1x 500 MW unit # 3 for 2x500 MW units at Sagardighi STPP, WB. (ii) Package-D: Civil,Structural,Architectural etc of Civil Superstructure Work of 1x500 MW unit # 4 for 2x500 MW units at Sagardighi STPP, WB.	
Ref	1.0	Tender no PSER:SCT:SDG:C1274:11
	2.0	BHEL's NIT, vide reference no PSER:SCT:SDG:C1274 Date: 05-11-2011
	3.0	BHEL's TCN-01, vide reference no PSER:SCT:SDG:C1274:11:TCN-01 Date: 19-11-2011
	4.0	Other References,if any.

With reference to above, following points, relevant to tender, may please be noted and complied with while submitting the offer.

- 1) Introduction of Construction Schedule of Major Activities/Building/Structure as per Sl. No. 6 of TCN-01.
- 2) Introduction of the following drawings/sketches/Report for general guidance & tender purpose only which may undergo changes during execution.
 - General Arrangement of Boiler-Sectional Side Elevation: Drg No. PE-DG-373-100-M007-Rev-01.
 - Power House Building (Unit # 3 & 4)-Structural Framing Along Axis-A: Drg No. PE-DG-373-612-C002-Rev-00.
 - Geotechnical Investigation Report - For unit # 3 & 4 of 2 x 500 MW Sagardighi STPP.
- 3) Revised 'No deviation certificate' is attached. Bidder to submit 'No deviation certificate' as per attached format only.
- 4) All other terms & conditions shall remain unchanged.

Thanking you,

Yours faithfully,
for BHARAT HEAVY ELECTRICALS LTD

ENGINEER(SCT)

Encl:

- 1.0 Construction Schedule of Major Activities/Building/Structure.
- 2.0 Drawings/Report
 - (i) Drg No. PE-DG-373-100-M007-Rev-01.
 - (ii) Drg No. PE-DG-373-612-C002-Rev-00.
 - (iii) GI REPORT
- 3.0 Revised format of 'No deviation certificate'.

पावर सेक्टर पूर्वी क्षेत्र (मुख्यालय)

POWER SECTOR EASTERN REGION, DJ-9/1, SALT LAKE CITY, KOLKATA - 700 091

फैक्स/Fax : (033) 23211960 फोन/Phone : बोर्ड/EPABX : 23211798/ 1691

2x500 MW UNIT'S AT SAGARDIGHI PROJECT

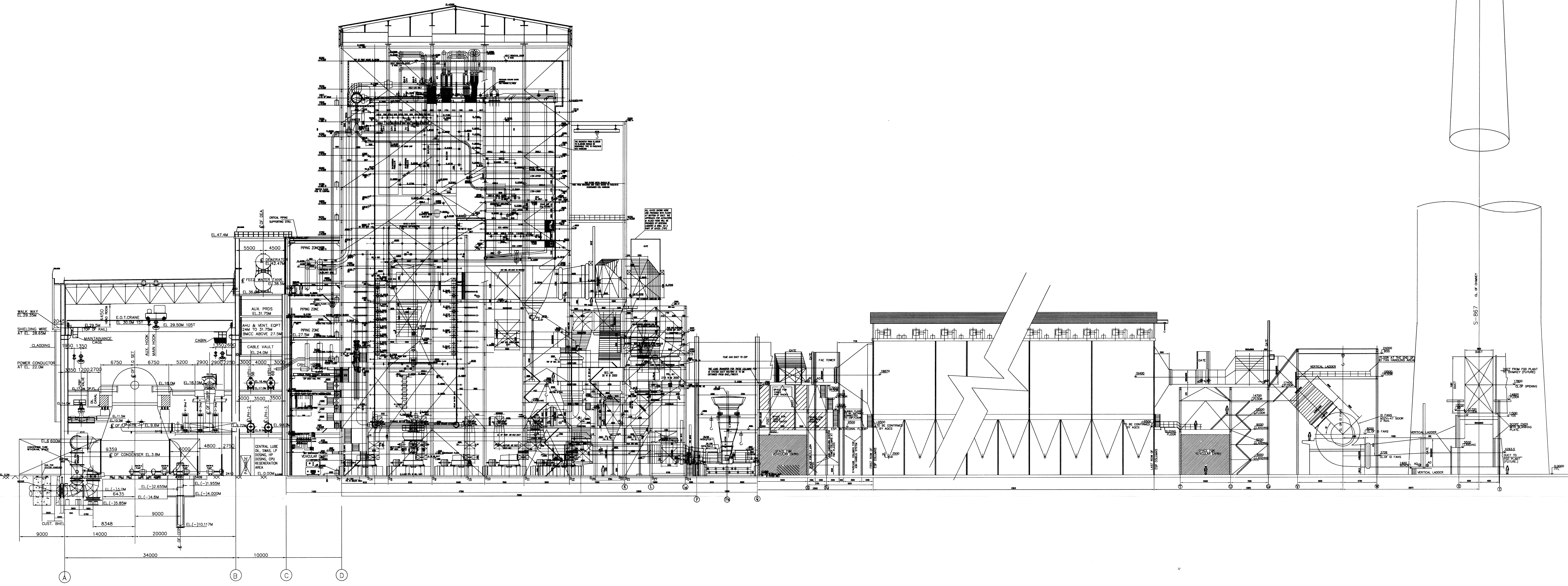
CONSTRUCTION SCHEDULE OF MAJOR ACTIVITIES/ BUILDING/ STRUCTURE

TENDER NO - PSER:SCT:SDG-C1274:11

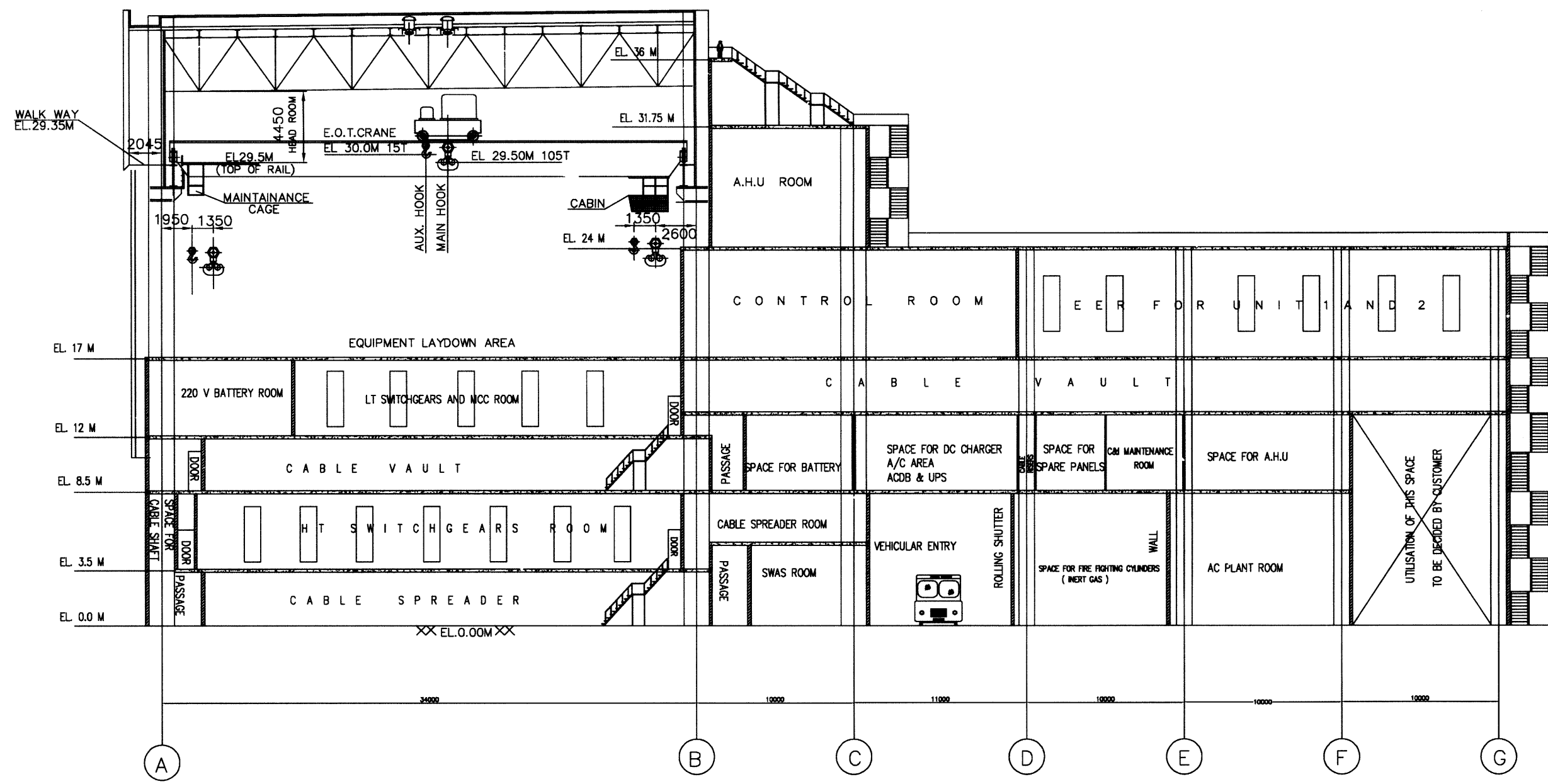
SL NO	ACTIVITY	MONTH-WISE SCHEDULE (WEEK START OF WORK)																																			
		1st	2nd	3rd	4th	5th	6th	7th	8th	9th	10th	11th	12th	13th	14th	15th	16th	17th	18th	19th	20th	21st	22nd	23rd	24th	25th	26th	27th	28th	29th	30th	31st	32nd	33rd	34th		
1.0	TG COLUMN & DECK (1200 M ³)	COL DRG	DECK DRG																																		
1.1	COL & DECK DRG RELEASE	▼	▼																																		
1.2	TG COL CASTING (450 M ³)			10	150	100																															
1.3	SUBMISSION STAGGING DRAWING & APPROVAL		▼	▼	▼																																
1.4	STAGGING MATERIAL RECEIPT AT SITE			▼	▼																																
1.5	TG DECK casting (800 M ³)																																				
2.0	POWER HOUSE STRUCTURAL																																				
2.1	STRL DRG RELEASE	▼																																			
2.2	MOBILISATION	■																																			
2.3	FABRICATION (4900 T)	▲	10	300	700	800	800	700	700	600	200																										
2.4	ERECTION (4900 T)																																				
3.0	POWER HOUSE SUPER STRUCTURE SUSPENDED SLAB RCC (2400 M ³)																																				
3.1	BRICK WORK & INSIDE PLASTERING																																				
4.0	M.S ROOF DECK SHEETING & ROOF CONCRETING																																				
4.1	DRAWING RELEASE																																				
4.2	FIXING & CONCRETING																																				
5.0	MILL BUILDING COLUMN & MILL FOUNDATION																																				
5.1	PILE & PILE CAP DRG	▼																																			
5.2	RCC FOUNDATION (RHS)																																				
5.3	RCC FOUNDATION(LHS)																																				
6.0	MILL BAY & BUNKER STRUCTURAL																																				
6.1	STRUCTURAL DRAWING RELEASE																																				
6.2	STRUCTURAL FABRICATION DRAWING RELEASE																																				
6.3	STRUCTURAL FABRICATION (3800 T)																																				
6.4	MILL BAY & BUNKER ERECTION (3800 T)																																				
6.5	BUNKER FLOOR, GR FL. & ROOF SLAB CONC.																																				
6.6	MASONARY WORK & INSIDE PLASTER COMPLETION																																				
6.7	OTHER CIVIL & STRUCTURAL WORK FOR MISC BUILDING ETC.																																				
7.0	FOPH & TANKS CIVIL WORK																																				
8.0	MILL REJECT CIVIL																																				
9.0	ESP CONTROL ROOM (650 T)																																				
9.1	STRUCTURAL DRAWING RELEASE																																				
9.2	FABRICATION DRAWING RELEASE																																				
9.3	STRUCTURAL FABRICATION (650 T)																																				
9.4	STRUCTURAL ERECTION (650 T)																																				
10.0	ESP CONTROL ROOM																																				
10.1	RCC DRAWING RELEASE																																				
10.2	FOUNDATION (750 M ³)																																				

SL NO	ACTIVITY	MONTH-WISE SCHEDULE (WEF START OF WORK)																																			
		1st	2nd	3rd	4th	5th	6th	7th	8th	9th	10th	11th	12th	13th	14th	15th	16th	17th	18th	19th	20th	21st	22nd	23rd	24th	25th	26th	27th	28th	29th	30th	31st	32nd	33rd	34th		
10.3	RCC DRAWING RELEASE FOR SUPER STRUCTURE SLAB										250	250	250																								
10.4	SUPERSTRUCTURE SLAB (520 M³)															140	240	140																			
11.0	TRANSFORMER YARD INCLUDING RAIL TRACK, OIL COLLECTION PIT ETC COMPLETE (2500 M³)																																				
11.1	RCC DRAWING RELEASE										▼																										
11.2	TRANSFORMER YARD RCC (2500 M³)													600	700	550	400	250																			
12.0	AIR COMPRESSOR BUILDING (1400 M³)																																				
12.1	RCC DRAWING RELEASE												▼																								
12.2	AIR COMPRESSOR BUILDING RCC (BGL)													DRG BGL																							
12.3	AIR COMPRESSOR BUILDING RCC (AGL)																	DRG AGL																			
13.0	CWPH FEED POOL, RCC DUCT INCLUDING ELECTRICAL (7000 M³)																																				
13.1	EXCAVATION DRAWING RELEASE	▼																																			
13.2	RAFT RCC DRG RELEASE	▼																																			
13.3	EXCAVATION				▲																																
13.4	PUMP HOUSE RAFT RCC (800 M³)																																				
13.5	FEED POOL RAFT RCC (900 M³)																																				
13.6	CWPH WALL & FEED POOL WALL RCC (2500 M³)																																				
13.7	SUPERSTRUCTURE RCC WORK																																				
13.8	CWPH ANNEXE RCC (BELOW GROUND)																																				
13.9	CWPH ANNEXURE RCC (ABOVE GROUND)																																				
14.0	PAINTING, SITE CLEANING, CONTRACT CLOSING																																				

LEGENDS	
▼	RELEASE OF CIVIL DRG
▲	RELEASE OF STRL ENG DRG
▲	RELEASE OF FAB DRG



THE INFORMATION ON THIS DOCUMENT IS THE PROPERTY OF BHARAT HEAVY ELECTRICALS LIMITED. IT MUST NOT BE USED DIRECTLY OR INDIRECTLY IN ANY WAY WITHOUT THE WRITTEN PERMISSION OF THE COMPANY.



CROSS SECTION AT COLUMN- 11

- NOTES:-**
1. ALL ELEVATIONS MARKED ARE W.R.T.FINISHED FLOOR ELEVATION OF 0.0M WHICH CORRESPONDS TO RL 34.5M.
 2. FPD: FIRE PROOF DOOR
 3. ALL DOORS ARE 1200 MM WIDE UNLESS NOTED OTHERWISE.
- REFERENCE DRAWING:**
1. TG BUILDING EQUIPMENT PLAN AT 0.0M
 2. TG BUILDING EQUIPMENT PLAN AT 8.5 & 12.0M
 3. TG BUILDING EQUIPMENT PLAN AT 17.0M
 4. TG BUILDING EQUIPMENT PLAN AT 24.0M & 27.0M, 31.75M, 36.0M & 47.5M(2 SHEETS)

CUSTOMER		THE WEST BENGAL POWER DEVELOPMENT CORPN. LTD.																					
CUSTOMER'S CONSULTANT		DEVELOPMENT CONSULTANTS, KOLKATA																					
JOB No.	373	SAGARDIGHI THERMAL POWER PROJECT PHASE-2 EXTENSION UNITS-3 & 4 (2x500 MW)																					
STATUS	CONTRACT	BHARAT HEAVY ELECTRICALS LTD POWER SECTOR PROJECT ENGINEERING MANAGEMENT NEW DELHI																					
DISTRIBUTION		<table border="1"> <thead> <tr> <th>DEPT</th> <th>NAME</th> <th>SIGN</th> <th>DATE</th> </tr> </thead> <tbody> <tr> <td>DRN</td> <td>EGS</td> <td></td> <td>27.06.11</td> </tr> <tr> <td>DES</td> <td>BNY/JAM</td> <td></td> <td>27.06.11</td> </tr> <tr> <td>CHK</td> <td>AM HUSSAIN</td> <td></td> <td>27.06.11</td> </tr> <tr> <td>APP</td> <td>RAJ. JOSHI</td> <td></td> <td>27.06.11</td> </tr> </tbody> </table>		DEPT	NAME	SIGN	DATE	DRN	EGS		27.06.11	DES	BNY/JAM		27.06.11	CHK	AM HUSSAIN		27.06.11	APP	RAJ. JOSHI		27.06.11
DEPT	NAME	SIGN	DATE																				
DRN	EGS		27.06.11																				
DES	BNY/JAM		27.06.11																				
CHK	AM HUSSAIN		27.06.11																				
APP	RAJ. JOSHI		27.06.11																				
TO		<table border="1"> <thead> <tr> <th>REV</th> <th>DATE</th> <th>ALT</th> <th>CHD</th> <th>APPD</th> </tr> </thead> <tbody> <tr> <td>1</td> <td>06.07.11</td> <td>G.S.P.</td> <td>A.M.H.</td> <td>K.C.</td> </tr> </tbody> </table>		REV	DATE	ALT	CHD	APPD	1	06.07.11	G.S.P.	A.M.H.	K.C.										
REV	DATE	ALT	CHD	APPD																			
1	06.07.11	G.S.P.	A.M.H.	K.C.																			
TITLE GENERAL ARRANGEMENT OF BOILER SECTIONAL SIDE ELEVATION																							
MPL	C	WSE	I	MAX	E	DEPT.	SCALE 1:300	DRAWING No.															
SIGN								PE-DG-373-100-M007															
DATE								SHEET 1 OF 1 REV 01															

COMPUTER FILE NAME: 373-100-M007-R1

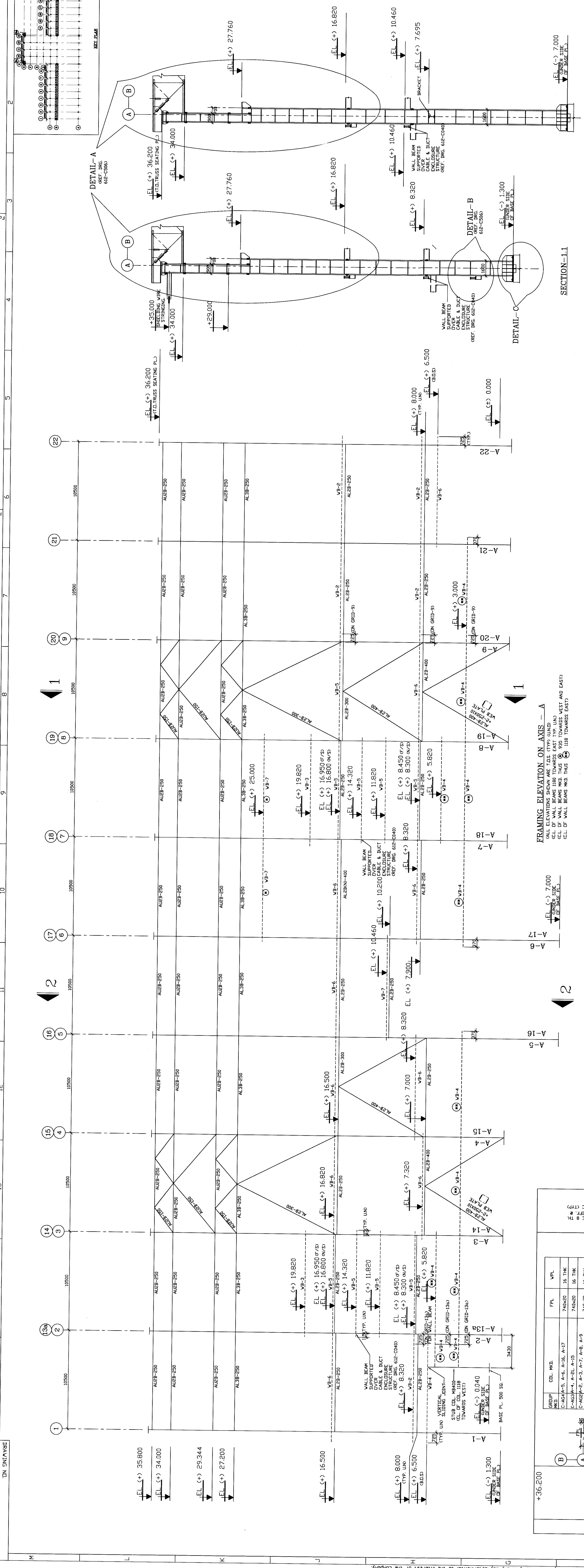


TABLE - A

PL THICKNESS	Weld in mm	Weld in mm
8 & 10	6	6
12	8	8
16 & 20	12	12
25	14	14
32	20	20
36 & 48	25	25
45 & 50	25	25

BRACING NOMENCLATURE

BRACING	MKD.	BRACING SECTION.	BRACKET	TIE	STIFF
WB1	MS 600 + 3750D PPF		MS 600	10	10 TH
WB2	MS 600 + 2500D PPF		MS 600	10	10 TH
WB3	MS 600		MS 600	10	10 TH
WB4	1- PL. 2750X8 TH 2- PL. 12 TH		MS 600	10	10 TH
WB5	1- PL. 2500X8 TH 2- PL. 12 TH		MS 600	10	10 TH
WB6	1- PL. 2500X8 TH 2- PL. 12 TH		MS 600	10	10 TH
WB7	1- PL. 2500X8 TH 2- PL. 12 TH		MS 600	10	10 TH

FRAMING ELEVATION ON AXIS - A

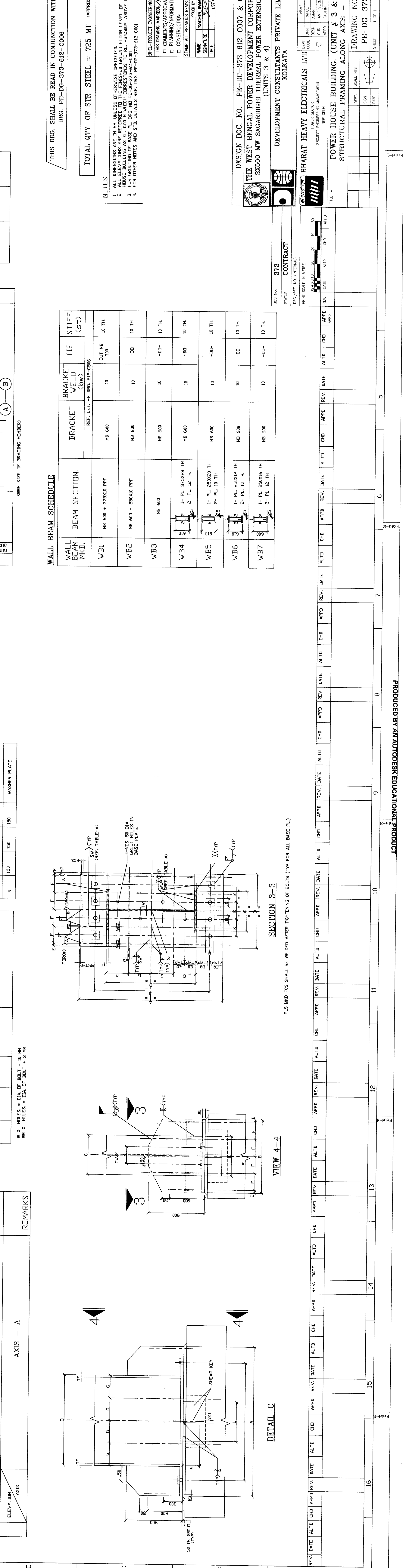
GROUP	MEM.	SP-A1	SP-A2	SP-A3	REMARKS
A	2650	2650	2650	2650	BASE
B	2400	1240	1240	1240	COL.
C	740	740	740	740	COL.
D	1650	1650	1650	1650	STEEL
E	40	40	40	40	
F	290	290	290	290	COL. VEB PL.
G	400	400	400	400	C/G OF BOLT
H	2525	2525	2525	2525	C/G OF BOLT
I	290	290	290	290	C/G OF BOLT
J	1000	1000	1000	1000	KEY
K	160	160	160	160	WASHER PLATE
L	120	120	120	120	
M	120	120	120	120	
N	120	120	120	120	

BASE PL. SCHEDULE

GROUP	MEM.	SP-A1	SP-A2	SP-A3	REMARKS
A-1	40	40	40	40	
A-2	40	40	40	40	
A-3	40	40	40	40	
A-4	40	40	40	40	
A-5	40	40	40	40	
A-6	40	40	40	40	
A-7	40	40	40	40	
A-8	40	40	40	40	
A-9	40	40	40	40	
A-10	40	40	40	40	
A-11	40	40	40	40	
A-12	40	40	40	40	
A-13	40	40	40	40	
A-14	40	40	40	40	
A-15	40	40	40	40	
A-16	40	40	40	40	
A-17	40	40	40	40	

COLUMN SCHEDULE

GROUP	MEM.	SP-A1	SP-A2	SP-A3	REMARKS
C-1	40	40	40	40	
C-2	40	40	40	40	
C-3	40	40	40	40	
C-4	40	40	40	40	
C-5	40	40	40	40	
C-6	40	40	40	40	
C-7	40	40	40	40	
C-8	40	40	40	40	
C-9	40	40	40	40	
C-10	40	40	40	40	
C-11	40	40	40	40	
C-12	40	40	40	40	
C-13	40	40	40	40	
C-14	40	40	40	40	
C-15	40	40	40	40	
C-16	40	40	40	40	
C-17	40	40	40	40	
C-18	40	40	40	40	
C-19	40	40	40	40	
C-20	40	40	40	40	
C-21	40	40	40	40	
C-22	40	40	40	40	



THIS DRG. SHALL BE READ IN CONJUNCTION WITH
 TOTAL QTY. OF STR. STEEL = 725 MT APPROX
 ALL DIMENSIONS ARE IN MILLIMETERS UNLESS OTHERWISE SPECIFIED
 1. ALL DIMENSIONS ARE TO FACE UNLESS OTHERWISE SPECIFIED
 2. ALL DIMENSIONS ARE TO CENTER LINE UNLESS OTHERWISE SPECIFIED
 3. ALL DIMENSIONS ARE TO CENTER LINE UNLESS OTHERWISE SPECIFIED
 4. FOR OTHER NOTES AND STD. DETAILS REF. ISOMETRIC DRAWING (UNIT # 3 & 4)
 MILES
 CONTRACT NO. 373
 PROJECT NO. 373
 DESIGNER: BHARAT HEAVY ELECTRICALS LTD
 DRAWING NO. PE-DG-373-612-C002
 DATE: 15.12.2011

4. SUBSOIL CONDITION, STRATIFICATION AND PROPERTIES

4.1. SUB-SOIL CONDITIONS:

The boring records showing the various soils met with are enclosed in Volume-2. These are prepared from field logs after proper modifications in the light of the laboratory test results and observation of disturbed and penetrometer soil samples. The results of the Standard Penetration Tests are given as 'N' values in these boring records. The sub-soil profile (as obtained from field and Laboratory test results) across the bore holes are shown under Figs. 2.1 to 2.10 giving description, consistency and colour of each strata. The "N" values are shown in the profile as well as presented in the borelogs in Volume-2. The laboratory test results and the back up sheets are also presented there.

4.2. SUB-SOIL STRATIFICATIONS:

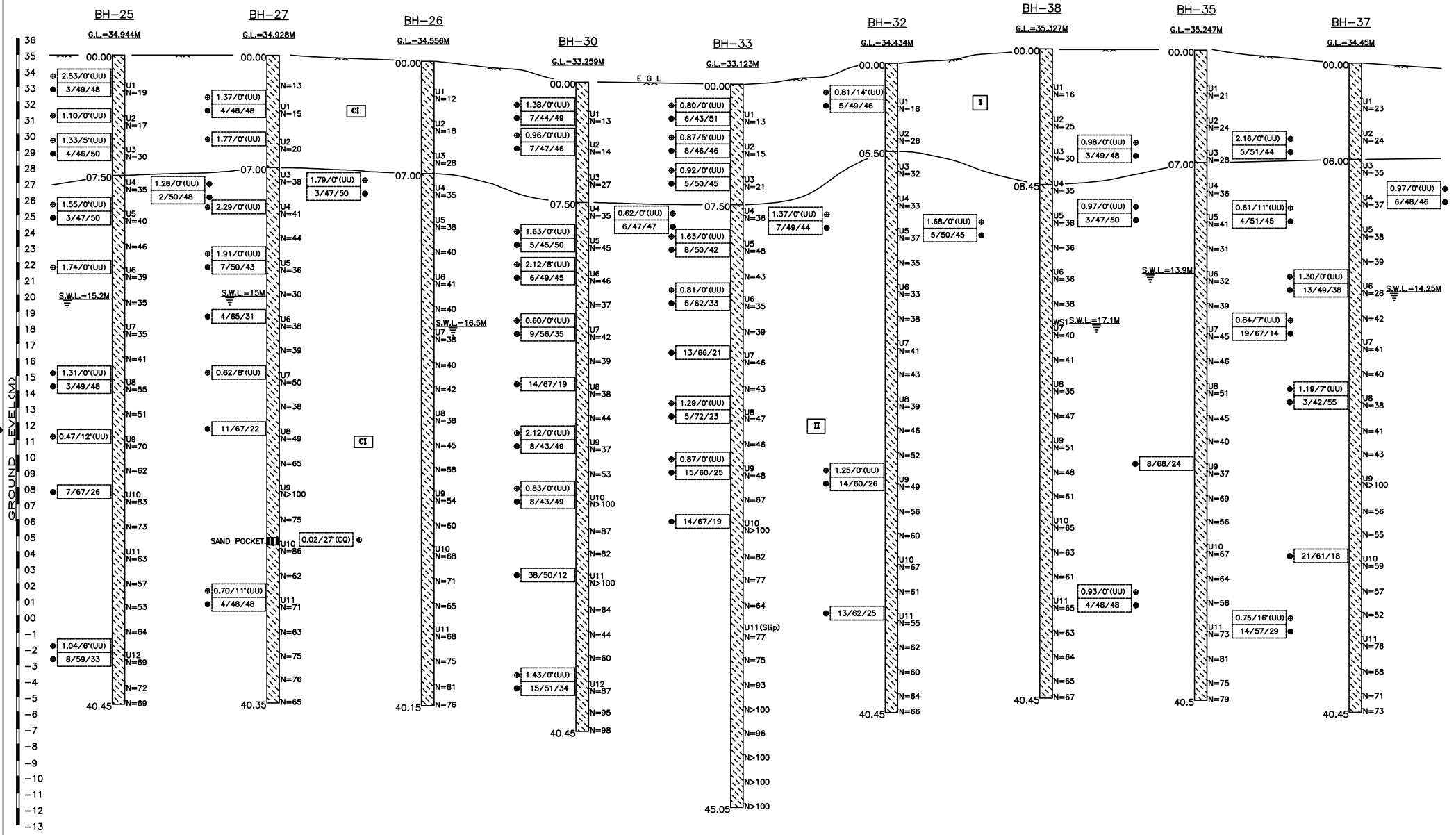
The subsoils are of medium to good quality. It is characterised by stiff to very stiff silty clay / clayey silt with fine sand mixture, kankars & decomposed materials. A dense to very dense, silty sand layer appears in some boreholes. Underlying the above, a hard silty clay / clayey silt layer was struck and continues upto the terminating depth for most of the boreholes. The description of each layer is presented below.

4.2.1. FILL:

At the top of few bore holes (BH-21, 23, 24 & 36), we are having filled up soil (thickness varies from 0.80m to a maximum of 3.50m below EGL). The fill consists of dark grey silty clay with grass roots, decomposed materials, brick bats, stone chips, kankars, silty sand etc.

4.2.2. STRATUM - I:

The soil in this layer consists of medium / stiff to very stiff, brownish grey, silty clay to clayey silt with fine sand mixtures. Kankars, decomposed materials, rusty spots and black/grey/brown/yellow patches have been observed in this layer. However, in some boreholes (BH-24, 43, 45 & 46), comparatively low 'N' value was observed at upper reaches. Routine laboratory tests on the "UDS" that could be collected from these layers show the following properties.

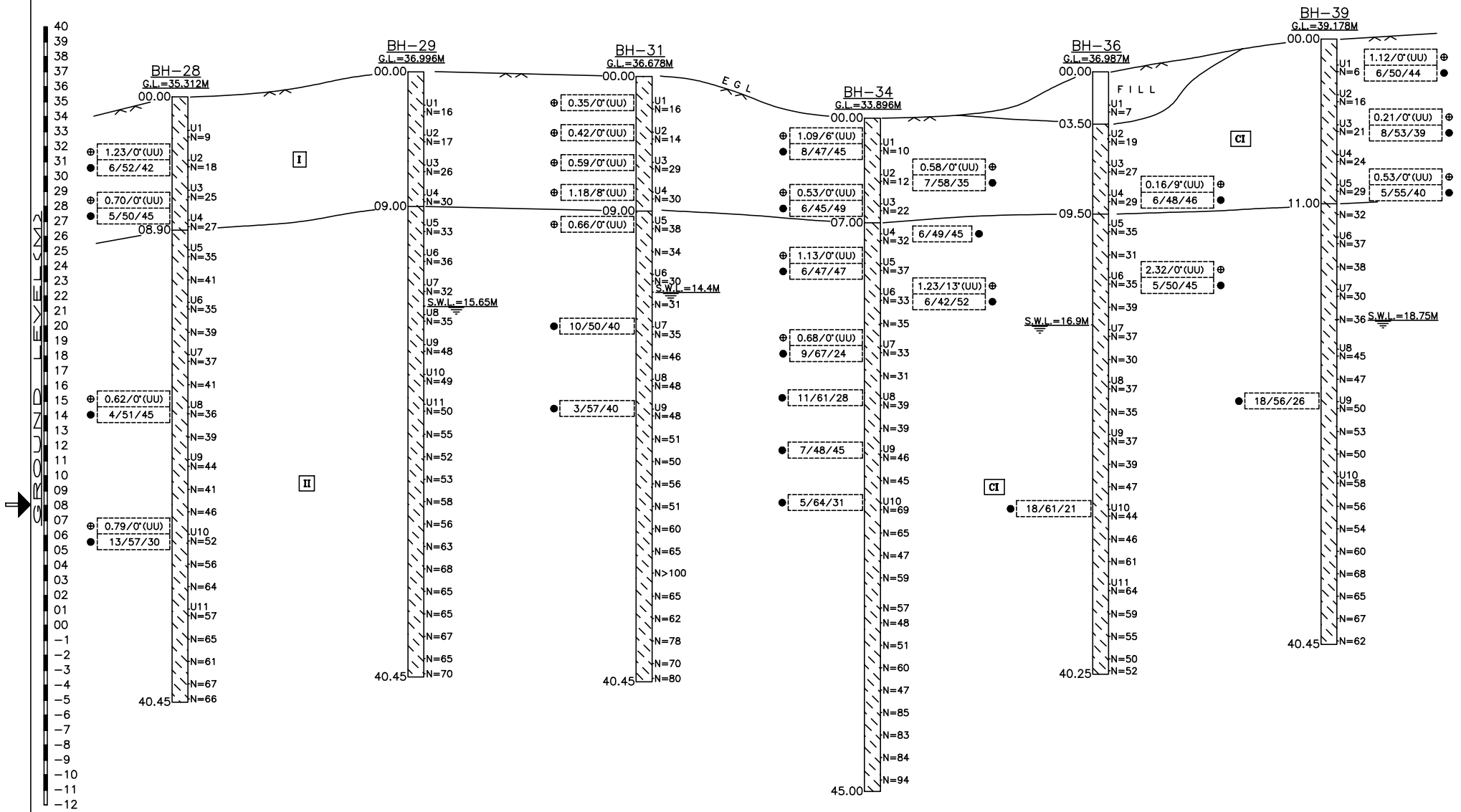


I → STIFF TO VERY STIFF, BROWNISH GREY, SILTY CLAY. OBSERVED KANKAR, DECOMPOSED MATERIALS, BLACK, GREY & BROWN PATCHES.

II → HARD, BROWNISH GREY, SILTY CLAY / CLAYEY SILT WITH TRACES OF FINE SAND. OBSERVED KANKAR, DECOMPOSED MATERIALS, CALCAREOUS NODULES, BLACK, GREY & YELLOW PATCHES.

U means UDS
 N means 'N' value
 WS means water sample
 ● C / # values
 ● Sand/Silt/Clay %

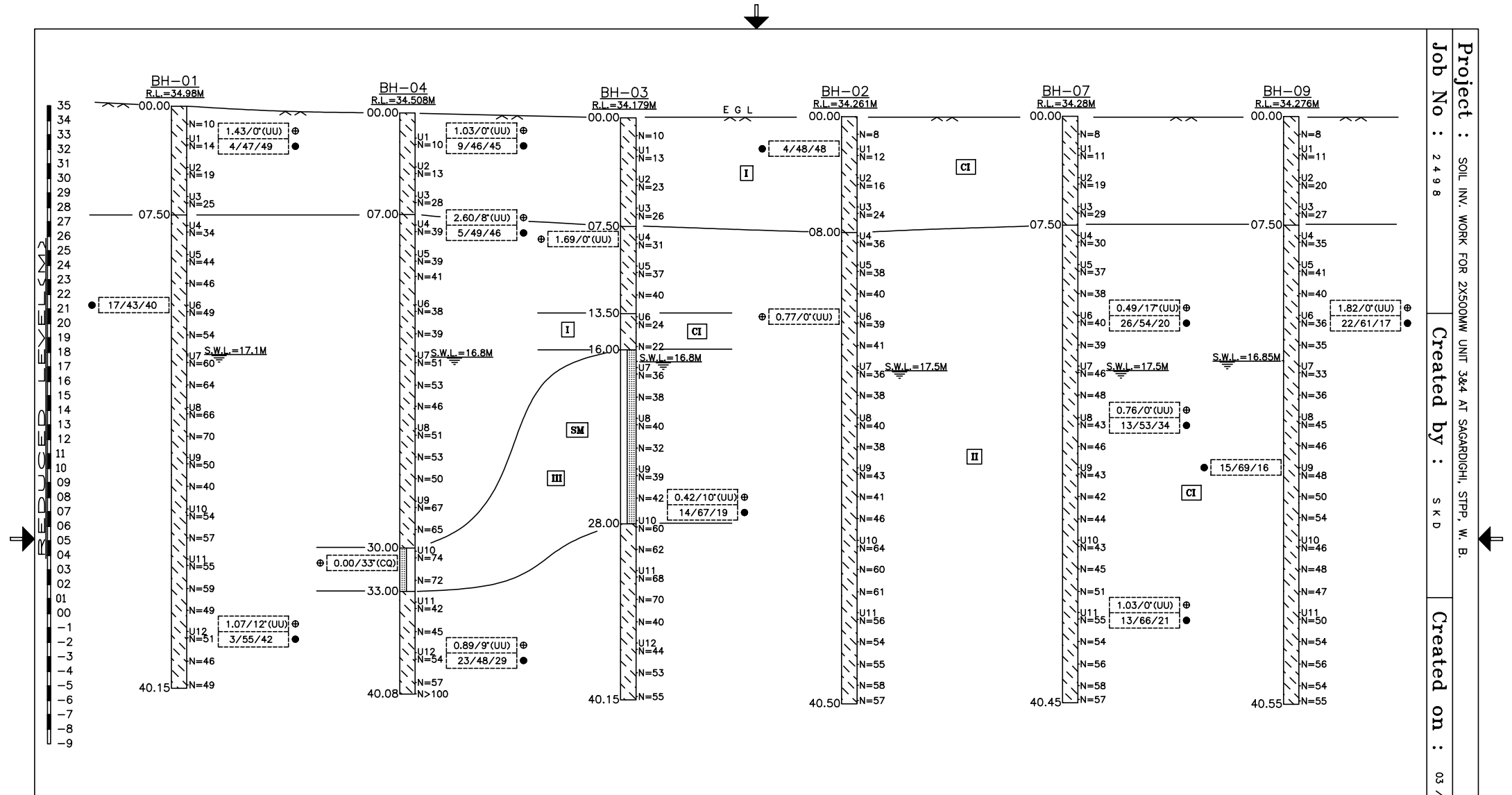
FIG. 2.01 : GENERALISED SOIL PROFILE



FILL → FILLED UP WITH DARK GREY, SILTY CLAY. OBSERVED GRASS ROOTS & DECOMPOSED MATERIALS.
 I → STIFF TO VERY STIFF, BROWNISH GREY, SILTY CLAY. OBSERVED KANKAR, DECOMPOSED MATERIALS, LIGHT GREY & DARK PATCHES.
 II → HARD, BROWNISH GREY, SILTY CLAY / CLAYEY SILT WITH TRACES OF FINE SAND. OBSERVED KANKAR, DECOMPOSED MATERIALS, BOULDERS, YELLOW, DARK PATCHES ETC.

U means UDS
 N means 'N' value
 ○ C / % values
 ● Sand/Silt/Clay %

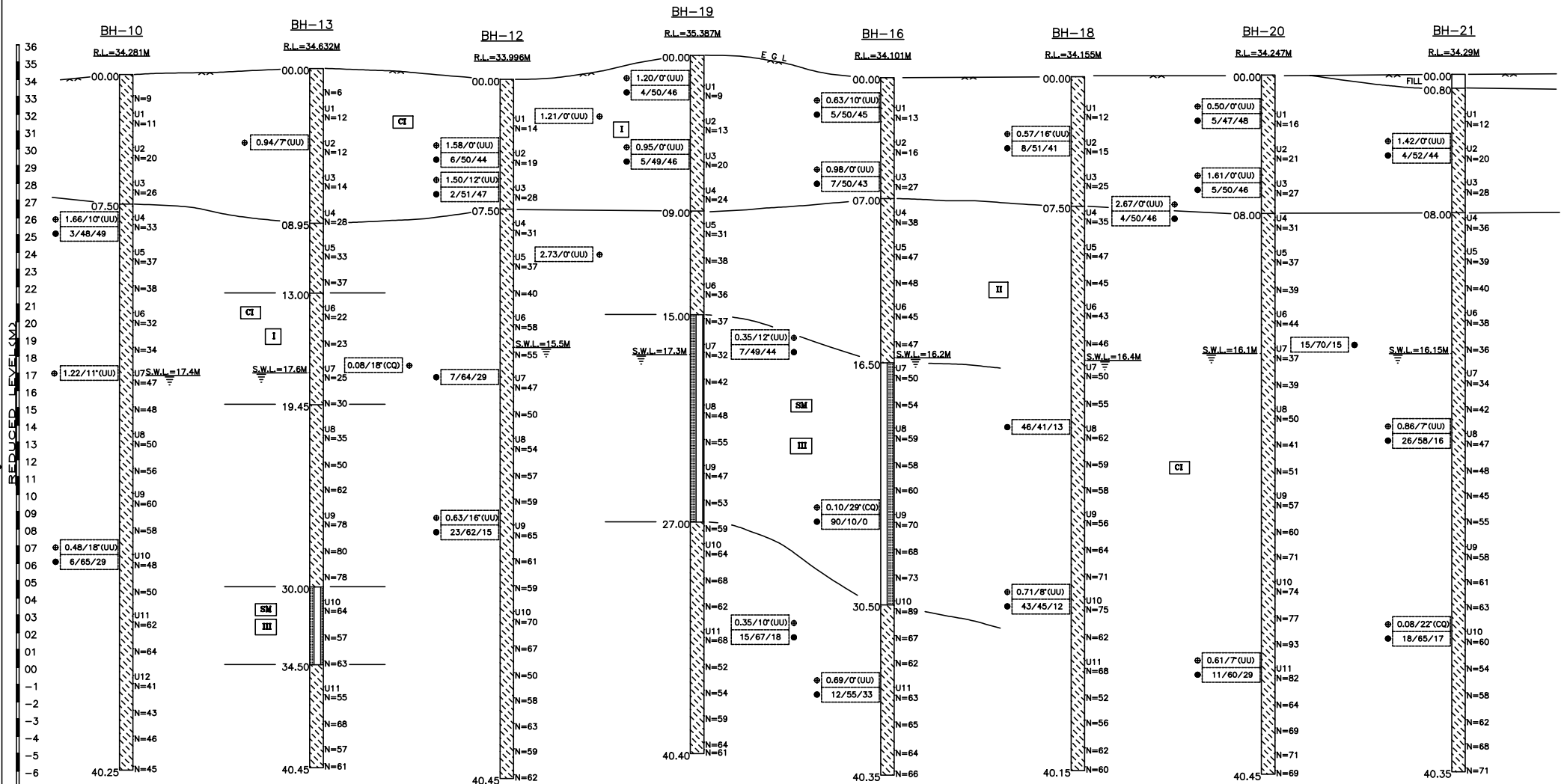
FIG. 2.02 : GENERALISED SOIL PROFILE



- I → STIFF TO VERY STIFF, BROWNISH GREY, SILTY CLAY TO CLAYEY SILT. OBSERVED KANKAR, DECOMPOSED MATERIALS, GREY & YELLOWISH PATCHES.
- II → HARD, BROWNISH GREY, SILTY CLAY / CLAYEY SILT WITH FINE TO MEDIUM SAND MIXTURE. OBSERVED KANKAR, DECOMPOSED MATERIALS, YELLOWISH & DARK PATCHES.
- III → DENSE TO VERY DENSE, BROWNISH GREY, CLAYEY SANDY SILT TO CLAYEY SILTY SAND. OBSERVED MICA.

U means UDS
 N means 'N' value
 ⊕ C / φ values
 ⊙ Sand/Silt/Clay %

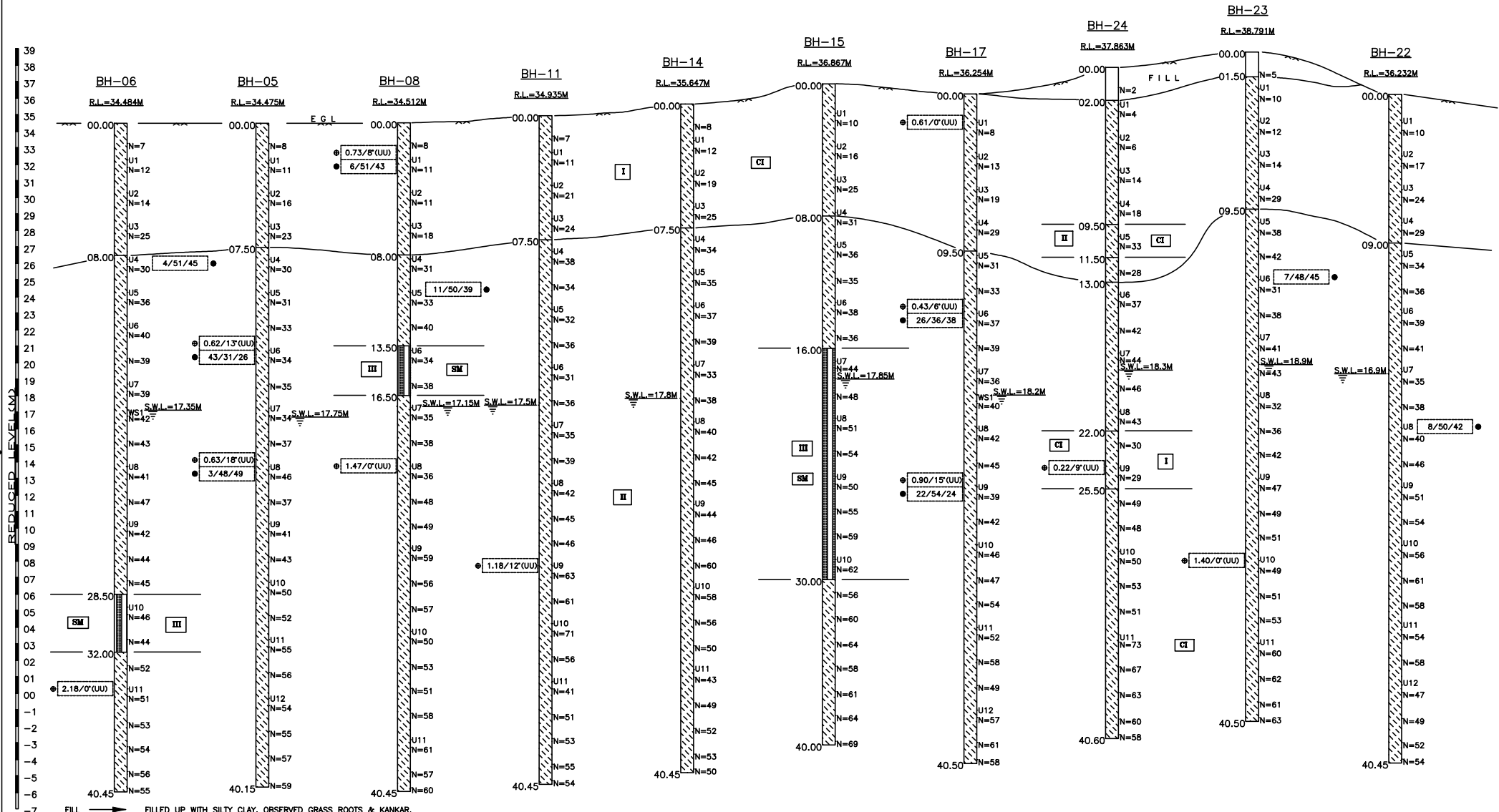
FIG. 2.03 : GENERALISED SOIL PROFILE

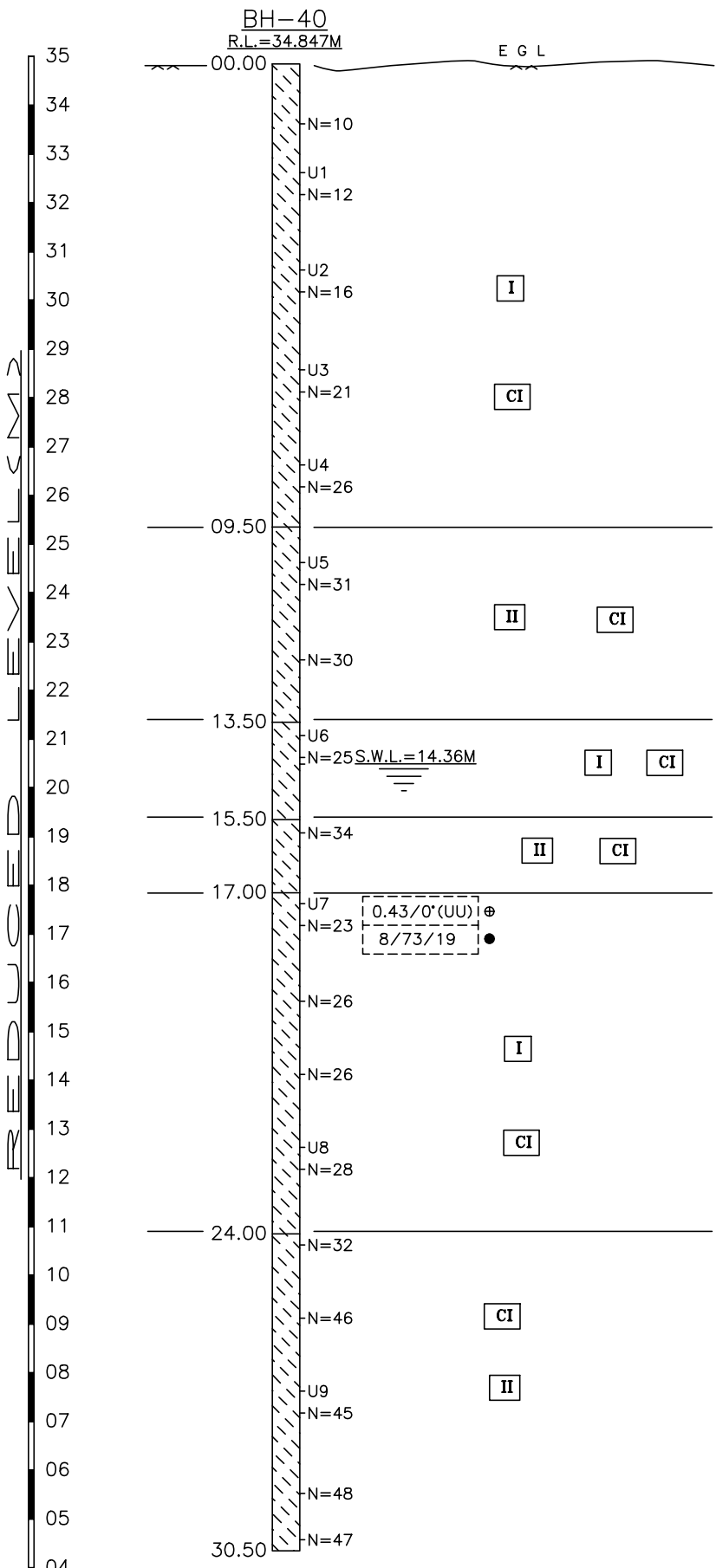


- FILL → FILLED UP WITH BRICK BATS, STONE, KANKAR & SILTY SAND.
- I → STIFF TO VERY STIFF, BROWNISH GREY, SILTY CLAY. OBSERVED KANKAR, DECOMPOSED MATERIALS, BLACK, GREY & BROWN PATCHES.
- II → HARD, BROWNISH GREY, SILTY CLAY / CLAYEY SILT WITH TRACES OF FINE SAND. OBSERVED KANKAR, DECOMPOSED MATERIALS, CALCAREOUS NODULES, BLACK, GREY & YELLOW PATCHES.
- III → DENSE TO VERY DENSE, BROWNISH GREY, CLAYEY SILTY SAND. OBSERVED KANKAR, MICA & RUSTY SPOTS.

U means UDS
 N means 'N' value
 WS means water sample
 C / % values
 ● Sand/Silt/Clay %

FIG. 2.04 : GENERALISED SOIL PROFILE

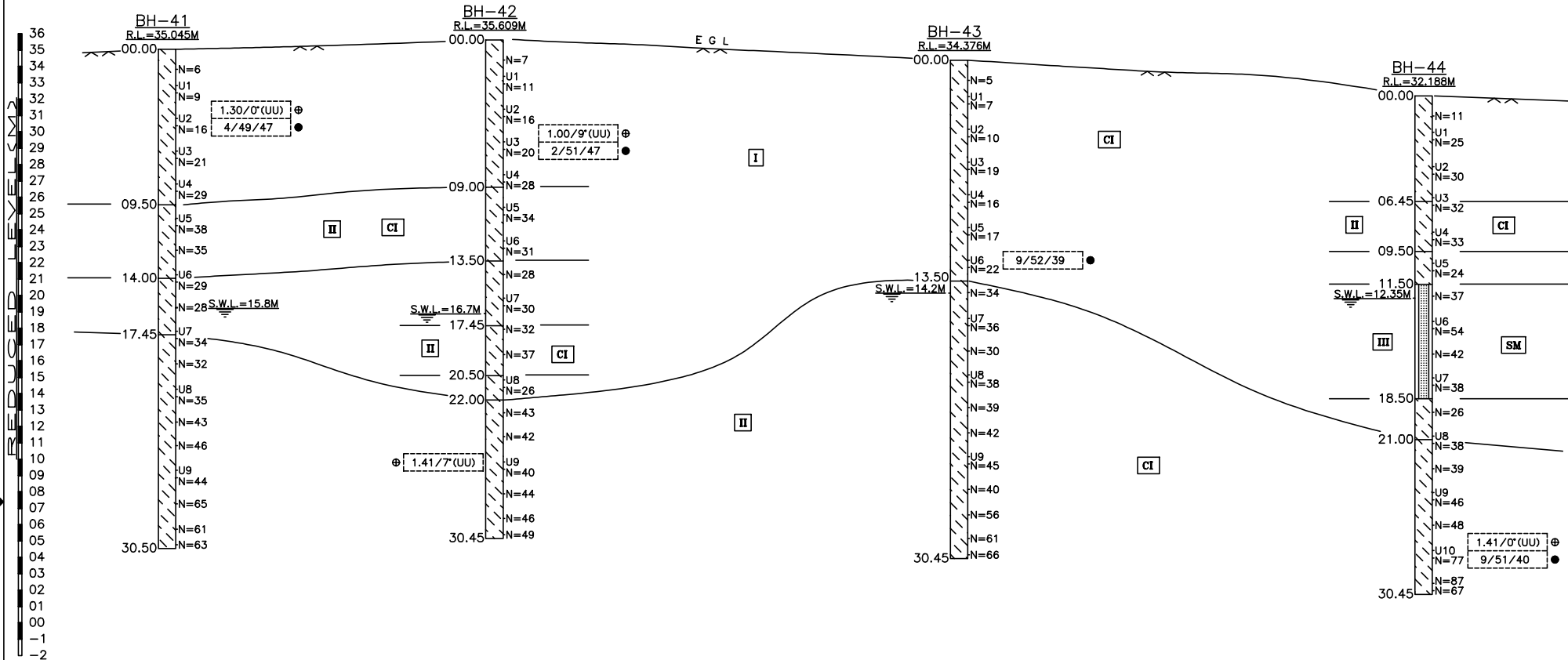




- I → STIFF TO VERY STIFF, BROWNISH GREY, SILTY CLAY TO CLAYEY SILT WITH TRACES OF FINE SAND. OBSERVED KANKAR, DECOMPOSED MATERIALS, MICA, GREY & YELLOW SPOTS.
- II → HARD, BROWNISH GREY, SILTY CLAY TO CLAYEY SILT WITH FINE SAND MIXTURE. OBSERVED KANKAR, DECOMPOSED MATERIALS, MICA, COBBLES, GREY & RUSTY SPOTS.

U means UDS
 N means 'N' value
 ⊕ C / ϕ values
 ● Sand/Silt/Clay %

FIG. 2.06 : SUB-SOIL PROFILE



- I → MEDIUM TO STIFF TO VERY STIFF, BROWNISH GREY, SILTY CLAY / CLAYEY SILT WITH TRACES OF FINE SAND. OBSERVED KANKAR, DECOMPOSED MATERIALS, CALCAREOUS NODULES & DARK PATCHES.
- II → HARD, BROWNISH GREY / YELLOWISH BROWN, SILTY CLAY / CLAYEY SILT WITH TRACES OF FINE SAND. OBSERVED KANKAR, DECOMPOSED MATERIALS, DARK PATCHES, MICA & SILT STONE.
- III → DENSE TO VERY DENSE, BROWNISH GREY, CLAYEY SILTY SAND / CLAYEY SANDY SILT. OBSERVED MICA, SILTY STONE PCS & BROWN PATCHES.

U means UDS
 N means 'N' value
 ⊕ C / ϕ values
 ● Sand/Silt/Clay %

FIG. 2.07 : GENERALISED SOIL PROFILE

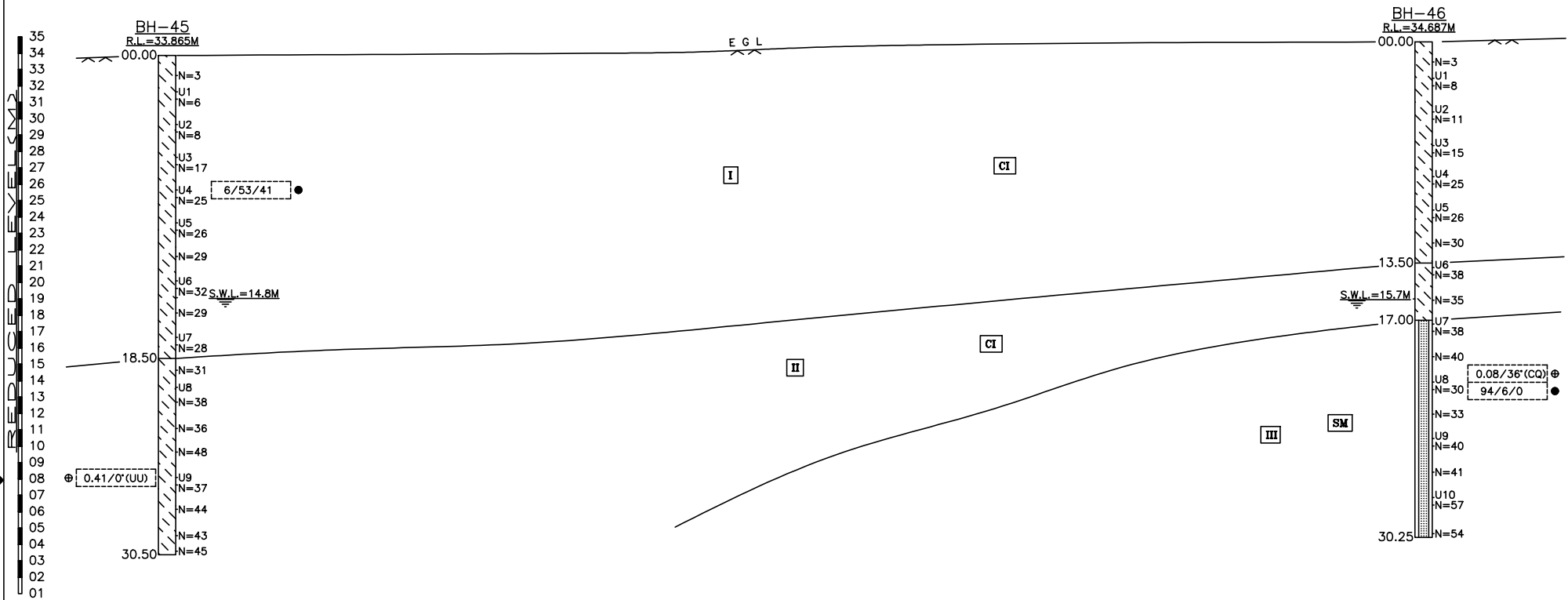
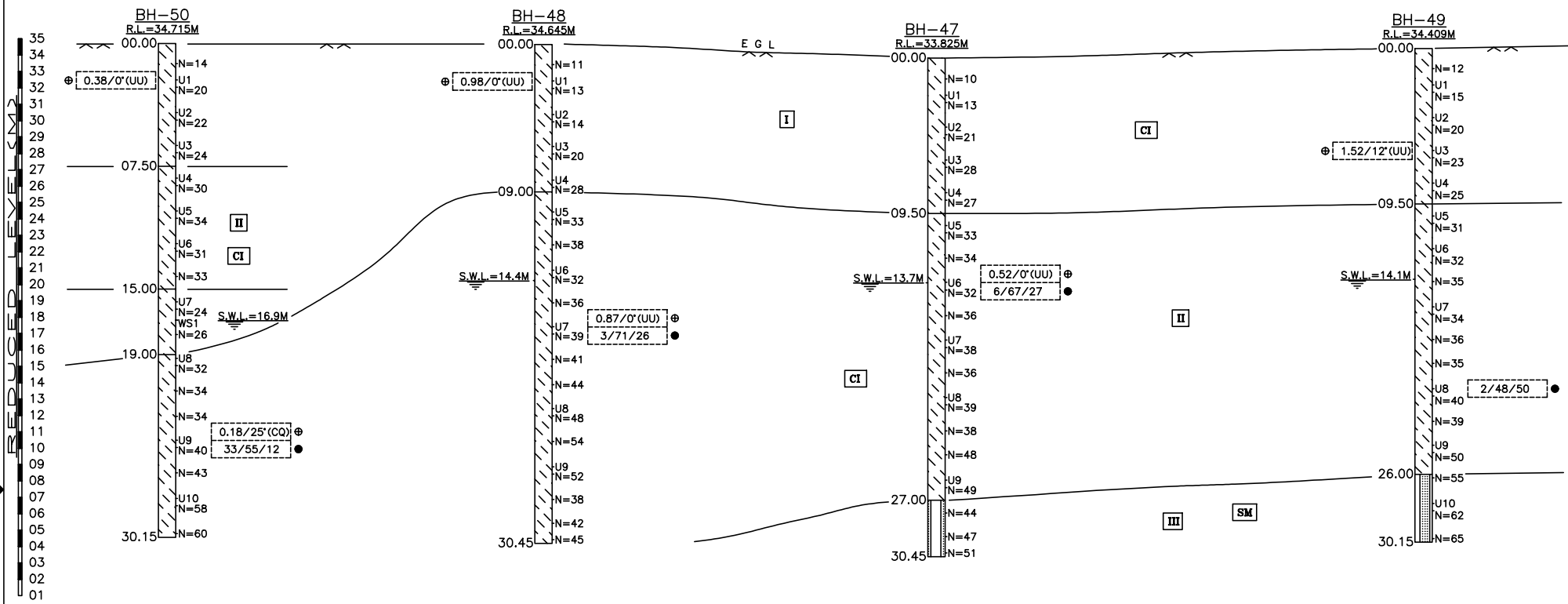


FIG. 2.08 : GENERALISED SOIL PROFILE



I → STIFF TO VERY STIFF, BROWNISH GREY TO YELLOWISH BROWN, SILTY CLAY TO CLAYEY SILT. OBSERVED KANKAR, DECOMPOSED MATERIALS, TRACES OF FINE SAND GREYISH & YELLOWISH PATCHES.
 II → HARD, BROWNISH GREY / YELLOWISH BROWN, SILTY CLAY TO CLAYEY SILT WITH FINE SAND MIXTURE & SILT STONE PCS. OBSERVED KANKAR, DECOMPOSED MATERIALS, MICA & GREYISH SPOTS.
 III → DENSE TO VERY DENSE, BROWNISH GREY, CLAYEY SILTY FINE TO MEDIUM SAND. OBSERVED MICA.

U means UDS
 N means 'N' value
 ⊕ C / φ values
 ● Sand/Silt/Clay %

FIG. 2.09 : GENERALISED SOIL PROFILE

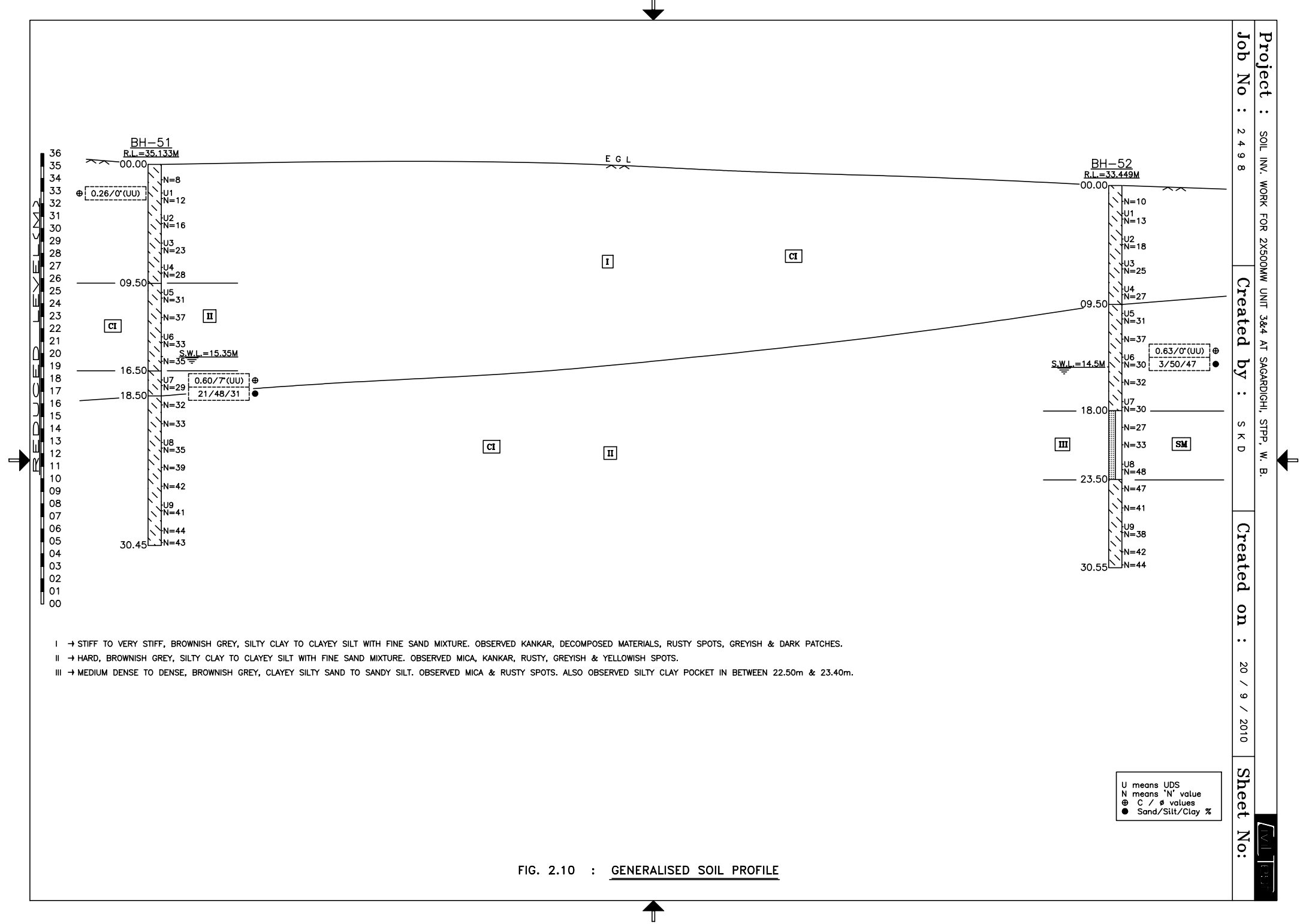


FIG. 2.10 : GENERALISED SOIL PROFILE

U means UDS
 N means 'N' value
 ⊕ C / φ values
 ● Sand/Silt/Clay %

NO DEVIATION CERTIFICATE

(To be typed and submitted in the Letter Head of the Company/Firm of Bidder)

To,

(Write Name & Address of Officer of BHEL inviting the Tender)

Dear Sir,

Sub : **No Deviation Certificate**

Ref : 1) Tender no PSER:SCT:SDG:C1274:11

2) BHEL's NIT, vide reference no PSER:SCT:SDG:C1274 Date: 05-11-2011.

3) BHEL's TCN-01, vide reference no PSER:SCT:SDG:C1274:11:TCN-01 Date: 19-11-2011.

4) BHEL's TCN-02, vide reference no PSER:SCT:SDG:C1274:11:TCN-02 Date: 25-11-2011.

5) All other pertinent issues till date.

We hereby confirm that we have not changed/ modified/materially altered any of the tender documents as downloaded from the website/ issued by BHEL and in case of such observance at any stage, it shall be treated as null and void.

We also hereby confirm that we have neither set any Terms and Conditions and nor have we taken any deviation from the Tender conditions together with other references applicable for the above referred NIT/Tender Specification.

We further confirm our unqualified acceptance to all Terms and Conditions, unqualified compliance to Tender Conditions, Integrity Pact (if applicable) and acceptance to Reverse Auctioning process.

In the event of observance of any deviation in any part of our offer at a later date whether implicit or explicit, the deviations shall stand null & void.

We confirm to have submitted offer in accordance with tender instructions and as per aforesaid references.

Thanking you,

Yours faithfully,

(Signature, date & seal of authorized representative of the bidder)

पावर सेक्टर पूर्वी क्षेत्र (मुख्यालय)

POWER SECTOR EASTERN REGION DJ-9/1, SALT LAKE CITY, KOLKATA - 700 091

फैक्स/Fax : (033) 23211960 फोन/Phone : बोर्ड/EPABX : 23211691/ 1798