



भारत हेवी इलेक्ट्रिकल्स लिमिटेड

(भारत सरकार का उपक्रम)

BHARAT HEAVY ELECTRICALS LIMITED

(A Govt. of India Undertaking)

TENDER CHANGE NOTE 03 (TCN – 03) DATED 22/10/2010

WITH REFERENCE TO THE NIT, PUBLISHED IN THE WEB SITES FOR CIVIL, STRUCTURAL, ARCHITECTURAL AND OTHER MISCELLANEOUS CIVIL ENABLING WORKS FOR 1X20.28 MW GAS TURBINE (Fr-5) (PKG-I) TOGETHER WITH COMPLETE MATERIALS MANAGEMENT OF ALL PACKAGES AND ERECTION, TESTING, COMMISSIONING ETC FOR 1x20.28 MW OPEN CYCLE GAS TURBINE (PKG-II) POWER PLANT AT DHULIAJAN, ASSAM, FOLLOWING CHANGES MAY PLEASE BE NOTED & COMPLIED WHILE SUBMITTING THE OFFER FOR THE SUBJECT JOB.

REF: TENDER DOCUMENT NO-PSER:SCT:DLJ-C1132:10

REF: 1) TENDER DOCUMENT NO-PSER:SCT:DLJ-C1132:10
2) TENDER CHANGE NOTICE 01(TCN-01) DT 11/10/2010
3) TENDER CHANGE NOTICE 02(TCN-02) DT 19/10/2010

BIDDERS ARE REQUESTED TO NOTE THAT, IN SL.NO. 12.7 OF BOQ CUM RATE SCHEDULE (VOL-IIIA), THE UNIT MAY BE READ AS “R.M.” IN PLACE OF “CU.M.” BIDDER ARE REQUESTED TO QUOTE ACCORDINGLY.

THE THREE DRGS OF DRAWING NOS. K5212-DWG-A-0001 TO 0003 (TENDER PURPOSE) ARE ALSO ATTACHED HERewith AS MENTIONED IN SL. NO. 13.1 & 13.2 IN BOQ CUM RATE SCHEDULE (VOL-IIIA).

ALL THE BIDDERS ARE REQUESTED TO SUBMIT REVISED NO DEVIATION CERIFICATE AS PER ENCLOSED ‘ANNEXURE-Y’.

BIDDERS TO NOTE THAT ALL TCNS WILL FORM PART OF TENDER DOCUMENT.

ALL OTHER TERMS & CONDITIONS OF THE TENDER SHALL REMAIN UNCHANGED.

ENGR (SCT)

पावर सेक्टर पूर्वी क्षेत्र (मुख्यालय)

POWER SECTOR EASTERN REGION, DJ-9/1, SALT LAKE CITY, KOLKATA - 700 091

फैक्स/Fax : (033) 23211960 फोन/Phone : बोर्ड/EPABX : 23211691 / 1684

ANNEXURE - Y

FORMAT FOR NO DEVIATION CERTIFICATE
(To be submitted in the bidder's letter head)

BHARAT HEAVY ELECTRICALS LIMITED,
Power Sector - Eastern Region,
Plot no 9/1, DJ Block, Sector – II, Salt Lake City,
Kolkata – 700 091

| | | |
|-----|--|--|
| Sub | No Deviation Certificate. | |
| Job | CIVIL, STRUCTURAL, ARCHITECTURAL AND OTHER MISCELLANEOUS CIVIL ENABLING WORKS FOR 1X20.28 MW GAS TURBINE (Fr-5) (PKG-I) TOGETHER WITH COMPLETE MATERIALS MANAGEMENT OF ALL PACKAGES AND ERECTION, TESTING, COMMISSIONING ETC FOR 1x20.28 MW OPEN CYCLE GAS TURBINE (PKG-II) POWER PLANT AT DHULIAJAN, ASSAM | |
| Ref | 1.0 | Tender no PSER:SCT:DLJ-C1132:10 |
| | 2.0 | BHEL's NIT, vide reference no.PSER:SCT:DLJ-C1132:10 dated 30/09/2010 |
| | 3.0 | BHEL's TCN-01 vide ref. No.TENDER CHANGE NOTE 01 (TCN – 01) DATED 11/10/10 |
| | 4.0 | BHEL's TCN-02 vide ref. No.TENDER CHANGE NOTE 02 (TCN – 02) DATED 19/10/10 |
| | 5.0 | BHEL's TCN-03 vide ref. No.TENDER CHANGE NOTE 03 (TCN – 03) DATED 22/10/10 |
| | 6.0 | Other references (if any). |

Dear Sirs,

With reference to above, this is to confirm that as per tender conditions, we have visited site before submission of our offer and noted the job content & site conditions etc. We also confirm that we have not changed/ modified the tender documents as appeared in the website/ issued by you along with various TCNs and in case of such observance at any stage, it shall be treated as null and void.

We hereby confirm that we have not taken any deviation from tender clauses together with other references as enumerated in the above referred NIT and TCNs. We hereby confirm our unqualified acceptance to all terms & conditions, unqualified compliance to technical specification, integrity pact and **acceptance to reverse auctioning process.**

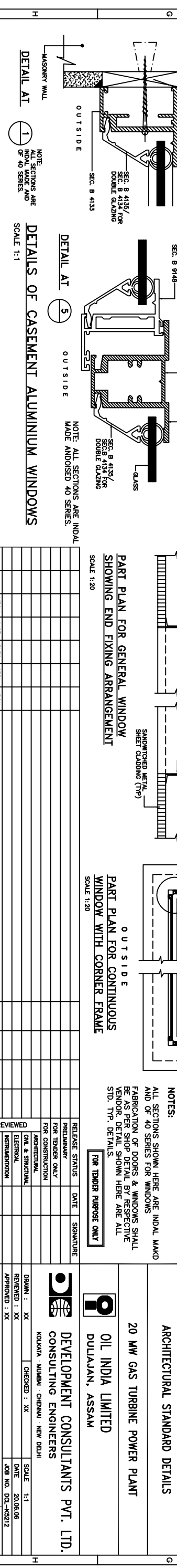
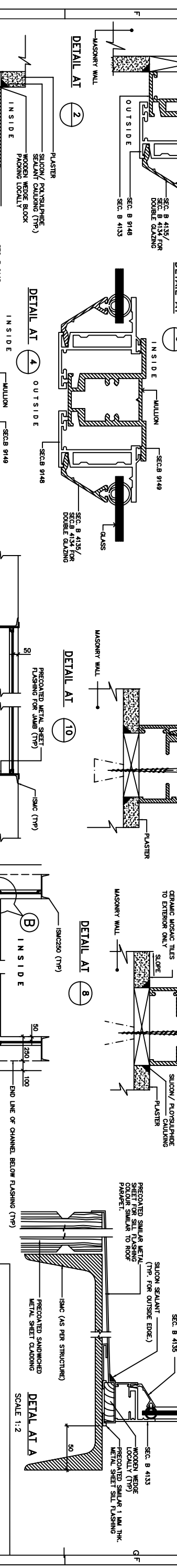
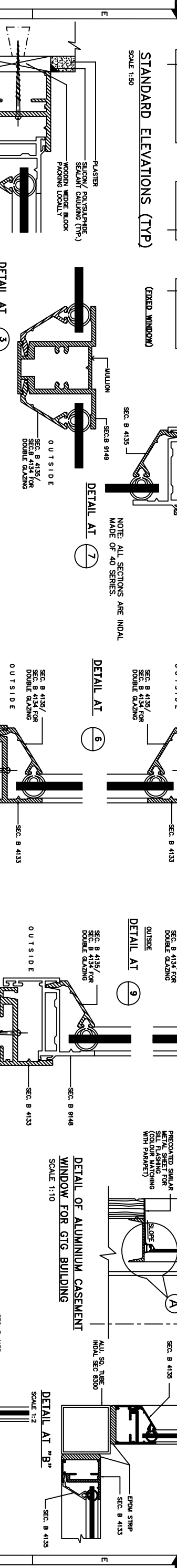
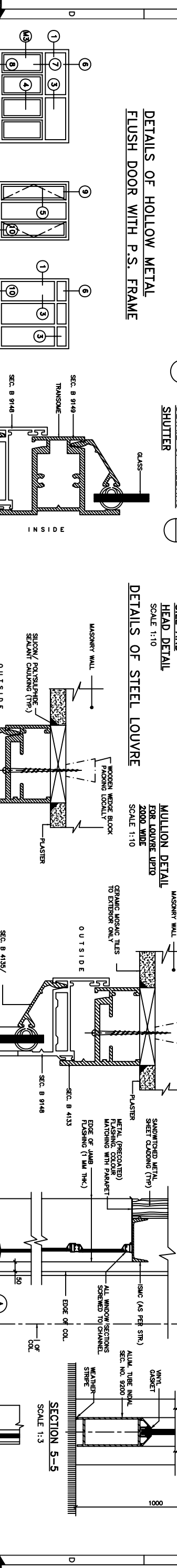
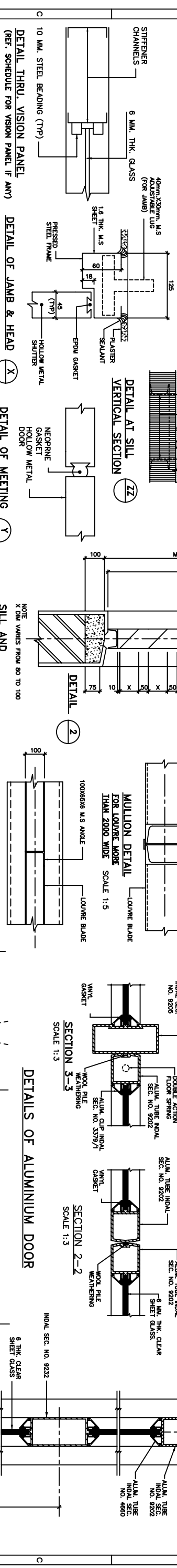
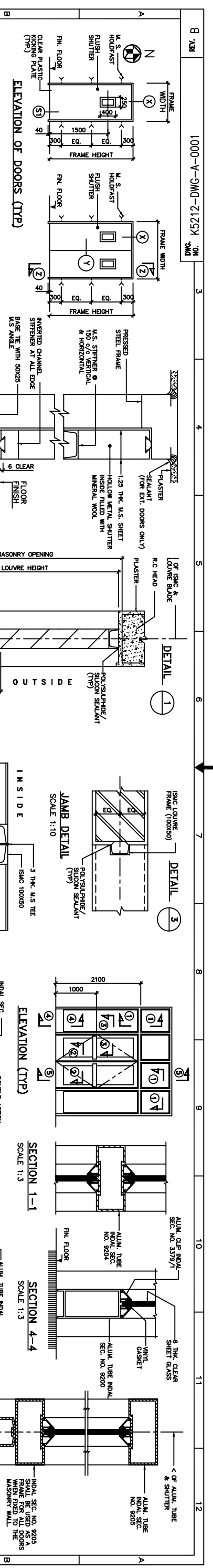
In the event of observance of any deviation in any part of our offer at a later date whether implicit or explicit, the deviations shall stand null & void.

We confirm to have submitted offer in accordance with tender instructions and as per aforesaid references.

Thanking you,

Yours faithfully,

(Signature, date & seal of authorized representative of the bidder)



| APPROV. | MECH. | INST. | ELEC. | STRUC. | ARCH. | MATURE OF REVISION & DESCRIPTION | CHECKED | DRAWN | REV. | DATE | REVIEWED | RELEASE STATUS | DATE | SIGNATURE |
|---------|-------|-------|-------|--------|-------|----------------------------------|---------|-------|------|------|----------|----------------|------|-----------|
| | | | | | | | | | | | | | | |

ARCHITECTURAL STANDARD DETAILS

20 MW GAS TURBINE POWER PLANT

OIL INDIA LIMITED

DULAIJAN, ASSAM

DEVELOPMENT CONSULTANTS PVT. LTD.

CONSULTING ENGINEERS

KOLKATA, MUMBAI, CHENNAI, NEW DELHI

SCALE 1:1

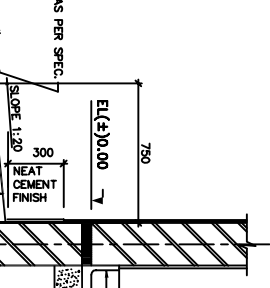
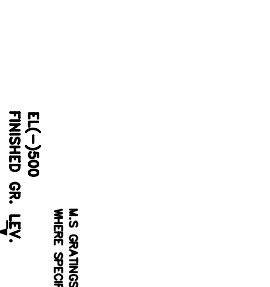
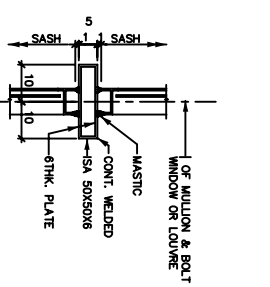
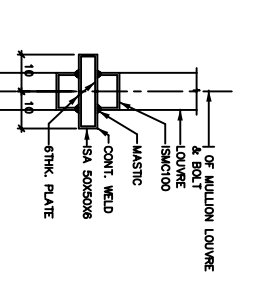
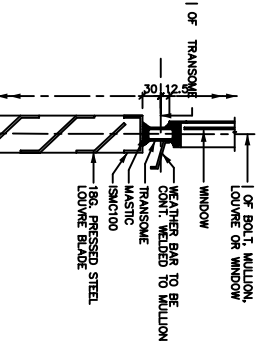
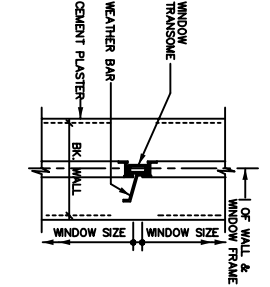
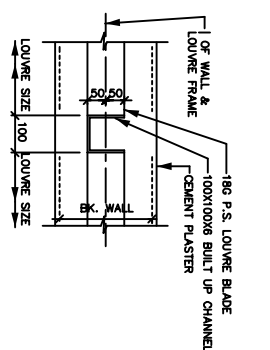
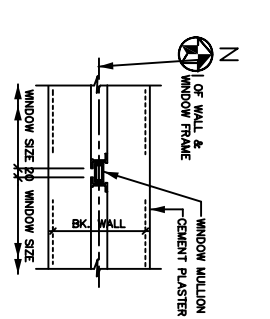
DRAWN : XX
CHECKED : XX
DATE : 20.06.06

REVIEWED : XX
DATE : 20.06.06

APPROVED : XX
JOB NO. DC-45212

DWG. NO. K5212-DWG-A-0001

REV. B



DETAIL OF MULLION
SCALE -1:1.10

DETAIL OF MULLION
SCALE -1:1.10

DETAIL OF TRANSOME
SCALE -1:1.10

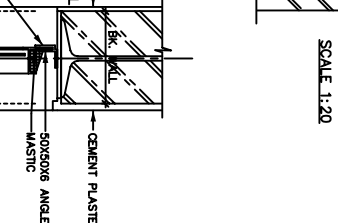
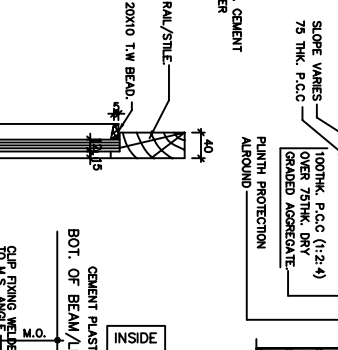
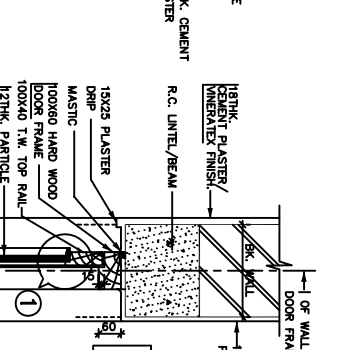
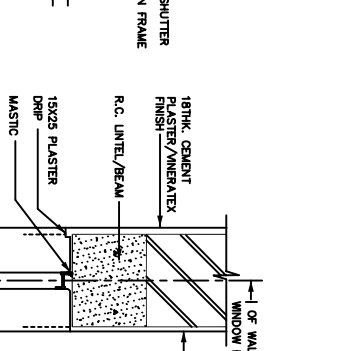
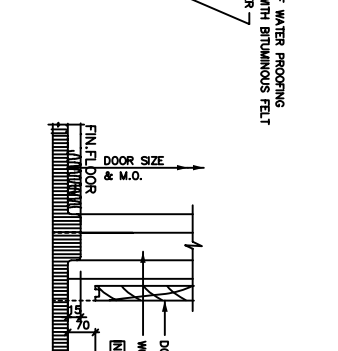
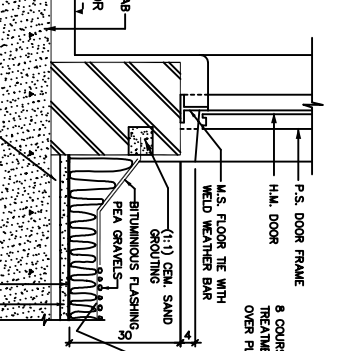
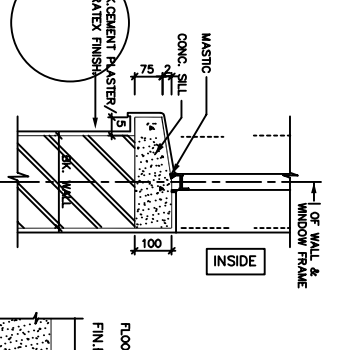
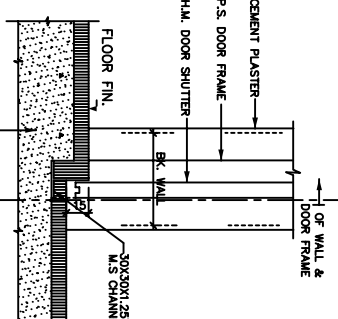
DETAIL OF TRANSOME
SCALE -1:1.10

DETAIL OF MULLION
SCALE -1:1.10

DETAIL OF MULLION
SCALE -1:1.10

DETAIL OF MULLION
SCALE -1:1.10

TYPICAL DETAIL OF
PLINTH PROTECTION &
SURFACE DRAIN
SCALE 1:2.0



DETAIL OF SILL (FOR EXTERNAL DOOR)
SCALE -1:1.10

DETAIL OF SILL (FOR ROOF DOOR)
SCALE -1:1.10

DETAIL OF SILL (FOR ROOF DOOR)
SCALE -1:1.10

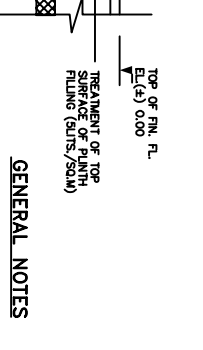
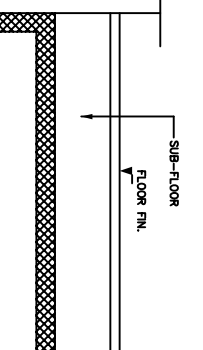
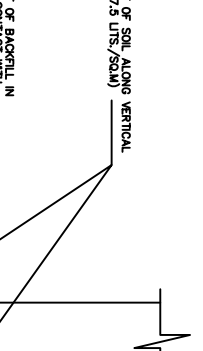
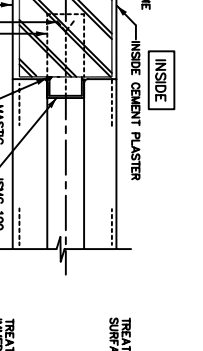
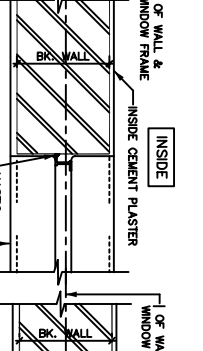
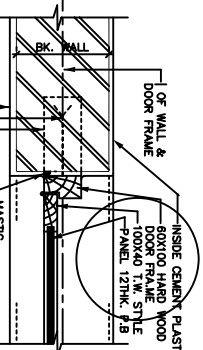
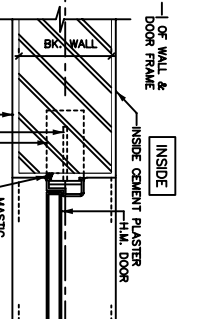
DETAIL OF SILL (FOR ROOF DOOR)
SCALE -1:1.10

DETAIL OF HEAD
SCALE -1:1.10

DETAIL OF HEAD
SCALE -1:1.10

DETAIL OF HEAD
SCALE -1:1.10

DETAIL OF HEAD
SCALE -1:1.10



DETAIL OF JAMB
SCALE -1:1.10

DETAIL OF JAMB
SCALE -1:1.10

DETAIL OF JAMB
SCALE -1:1.10

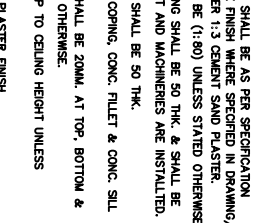
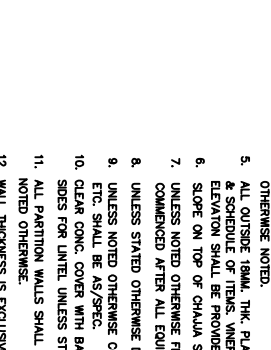
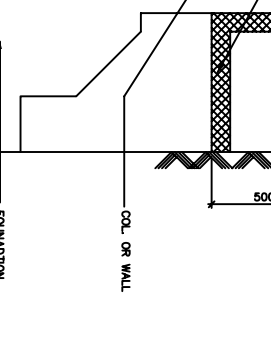
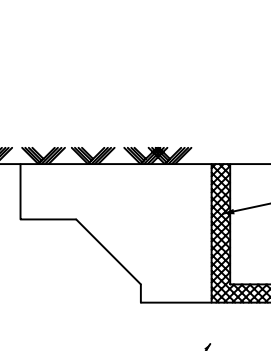
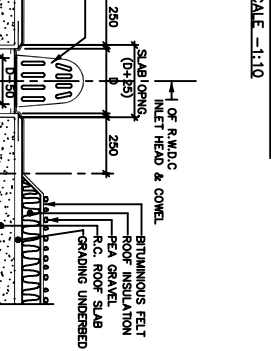
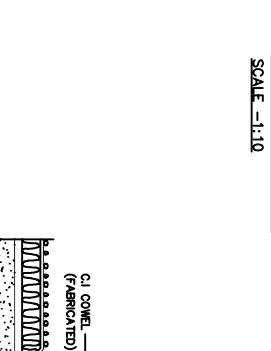
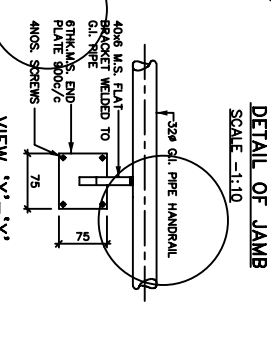
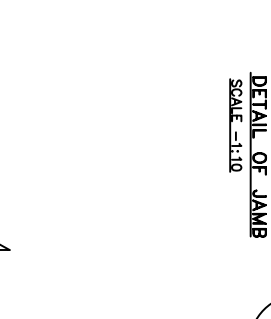
DETAIL OF JAMB
SCALE -1:1.10

DETAIL OF JAMB
SCALE -1:1.10

DETAIL OF JAMB
SCALE -1:1.10

DETAIL OF JAMB
SCALE -1:1.10

DETAIL OF JAMB
SCALE -1:1.10



VIEW 'X-X'
HANDRAIL FIXING TO WALL

VIEW 'X-X'
HANDRAIL FIXING TO WALL

DETAIL OF R.W.D.C (INLET HEAD)
SCALE -1:1.10

DETAIL OF R.W.D.C (INLET HEAD)
SCALE -1:1.10

DETAIL OF R.W.D.C (INLET HEAD)
SCALE -1:1.10

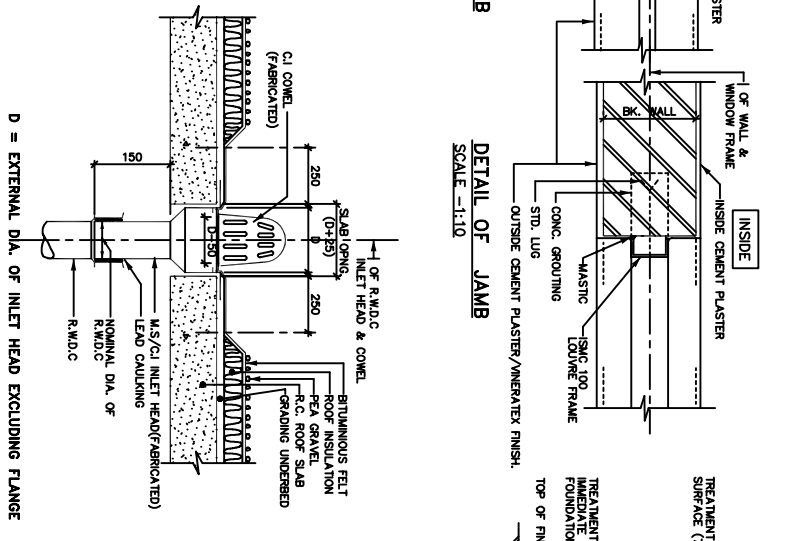
DETAIL OF R.W.D.C (INLET HEAD)
SCALE -1:1.10

DETAIL OF R.W.D.C (INLET HEAD)
SCALE -1:1.10

DETAIL OF R.W.D.C (INLET HEAD)
SCALE -1:1.10

| NOMINAL DIA. OF R.W.D.C IN WALL | D IN WALL | SLAB GROUTING IN WALL |
|---------------------------------|-----------|-----------------------|
| 100 | 150 | 175 |
| 150 | 225 | 250 |
| 200 | 300 | 325 |

DETAIL OF R.W.D.C (INLET HEAD)
SCALE -1:1.10



A TYP. SECTION SHOWING PORTION FOR ANTI-TERMITE TREATMENT

GENERAL NOTES

- DRAWING SHALL BE READ IN CONJUNCTION WITH CONTRACT TERMS & CONDITIONS.
- UNLESS OTHERWISE NOTED, ALL DIMENSIONS ARE IN MILLIMETRE.
- FOUNDED DIMENSIONS OF OPENINGS ARE MASONRY OPENINGS UNLESS OTHERWISE NOTED.
- ALL DIMENSIONS OF OPENINGS ARE MASONRY OPENINGS UNLESS OTHERWISE NOTED.
- OTHERWISE NOTED.
- SCHEDULE OF ITEMS, VARIATEX FINISH WHERE SPECIFIED IN DRAWING/ELEVATION SHALL BE PROVIDED OVER 1:3 CEMENT SAND PLASTER.
- SLOPE ON TOP OF CHALUA SHALL BE (1:80) UNLESS STATED OTHERWISE.
- UNLESS NOTED OTHERWISE FLOORING SHALL BE 50 THK. & SHALL BE COMMENCED AFTER ALL EQUIPMENT AND MACHINERIES ARE INSTALLED.
- UNLESS STATED OTHERWISE D.P.C SHALL BE 50 THK.
- UNLESS NOTED OTHERWISE CONC. COPING, CONC. INLET & CONC. SILL ETC. SHALL BE AS/SEC.
- CLEAR CONC. COVER WITH BARS SHALL BE 20MM. AT TOP, BOTTOM & SIDES FOR UNTEL UNLESS STATED OTHERWISE.
- ALL PARTITION WALLS SHALL BE UP TO CEILING HEIGHT UNLESS NOTED OTHERWISE.
- WALL THICKNESS IS EXCLUSIVE OF PLASTER FINISH.

FOR TENDER PURPOSE ONLY

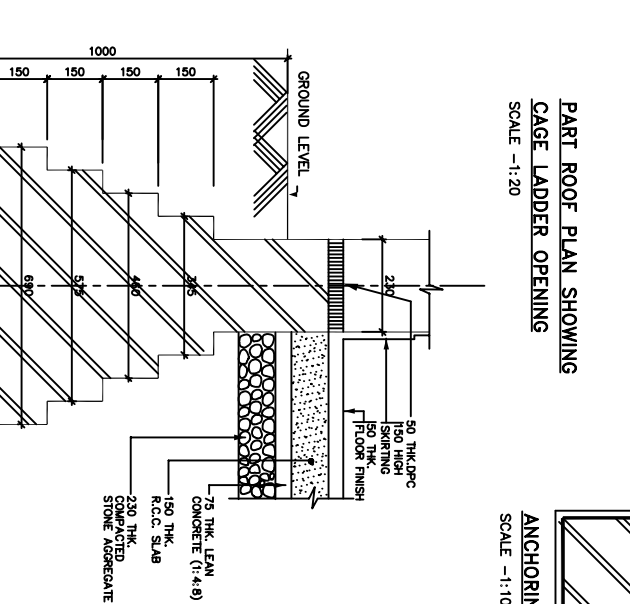
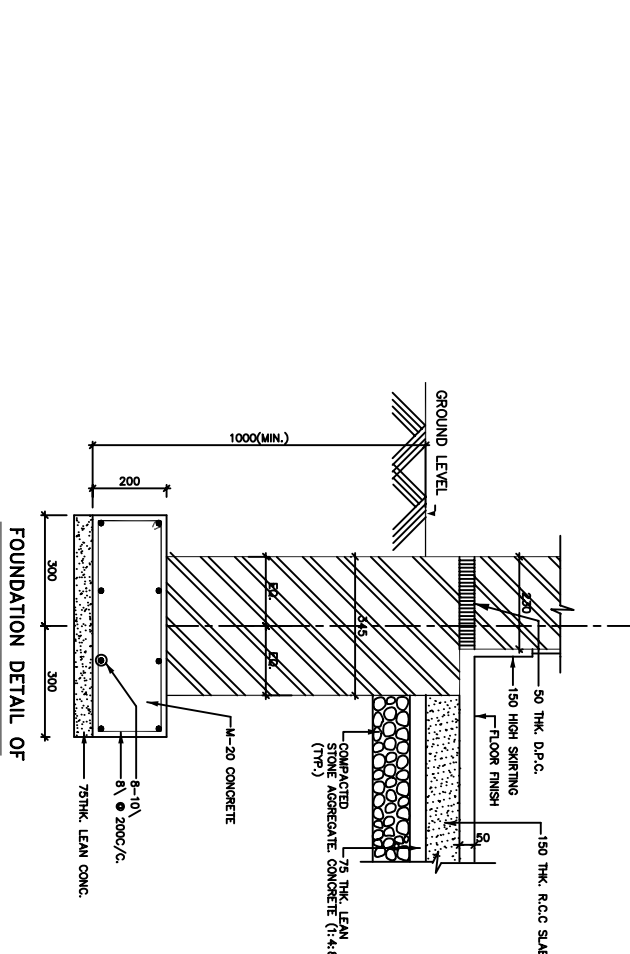
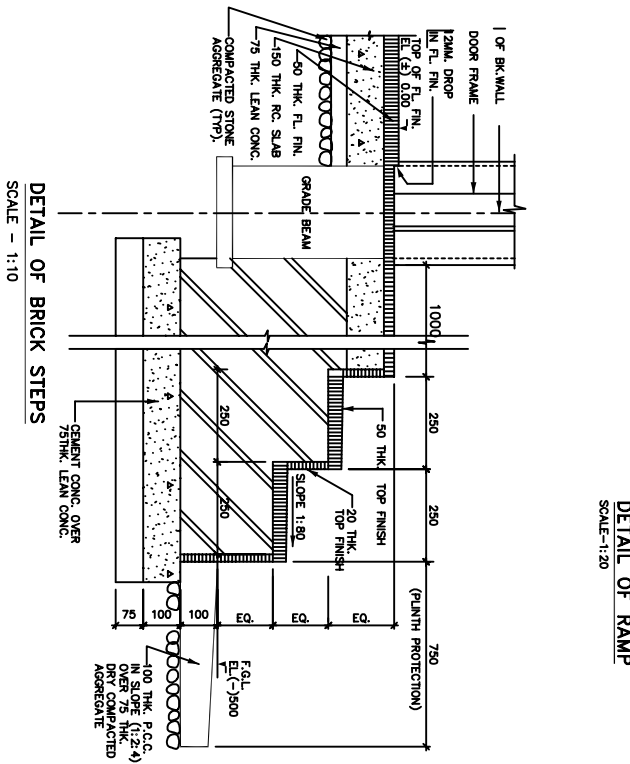
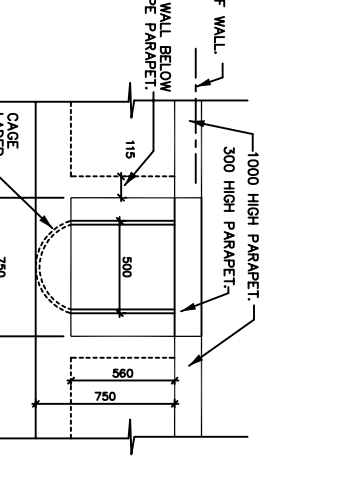
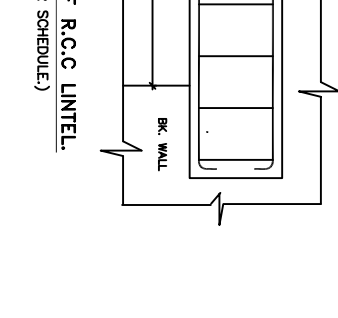
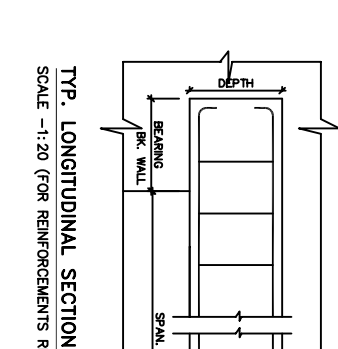
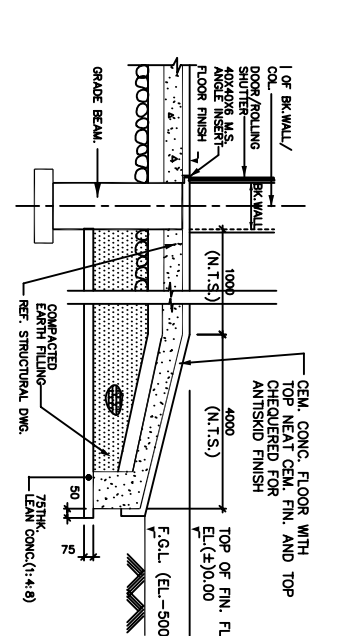
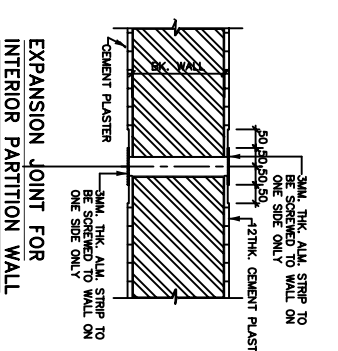
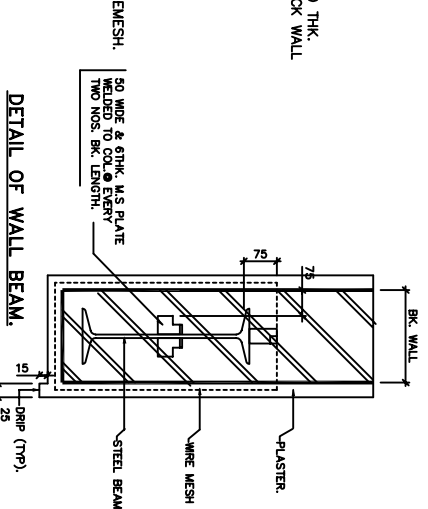
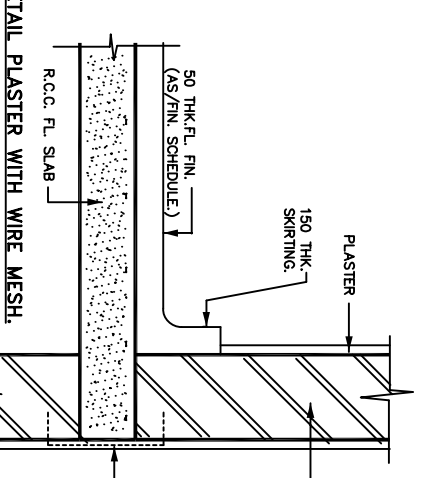
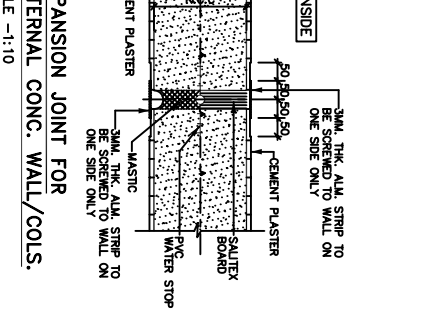
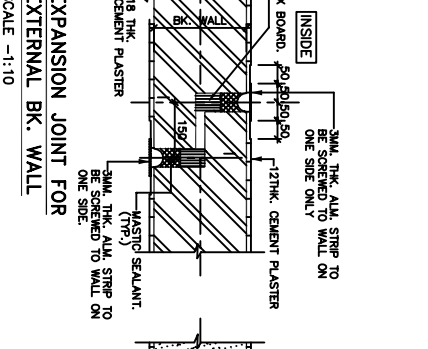
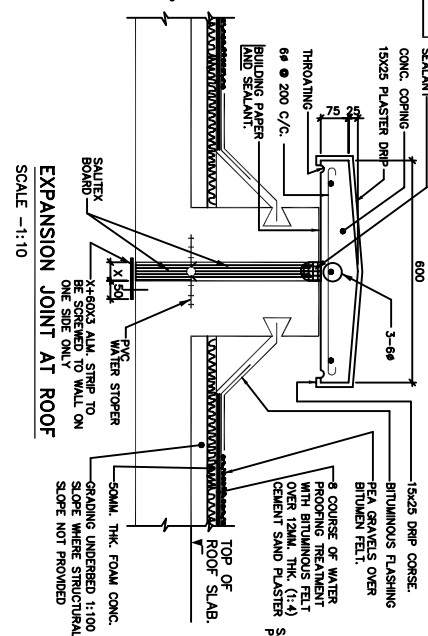
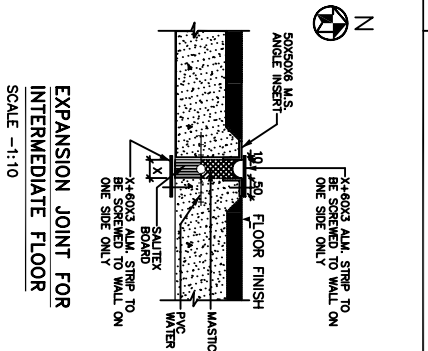
ARCHITECTURAL STANDARD DETAILS
20 MW GAS TURBINE POWER PLANT

OIL INDIA LIMITED
DULAIJAN, ASSAM

DEVELOPMENT CONSULTANTS PVT. LTD.
CONSULTING ENGINEERS

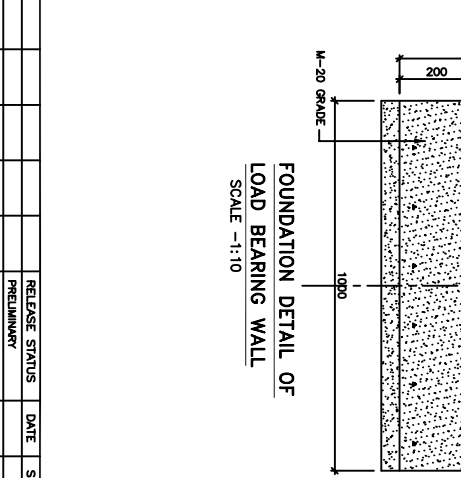
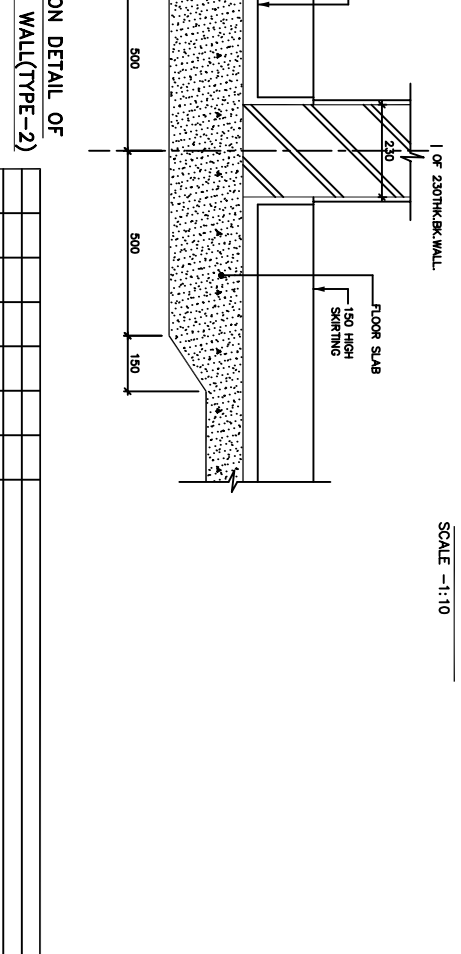
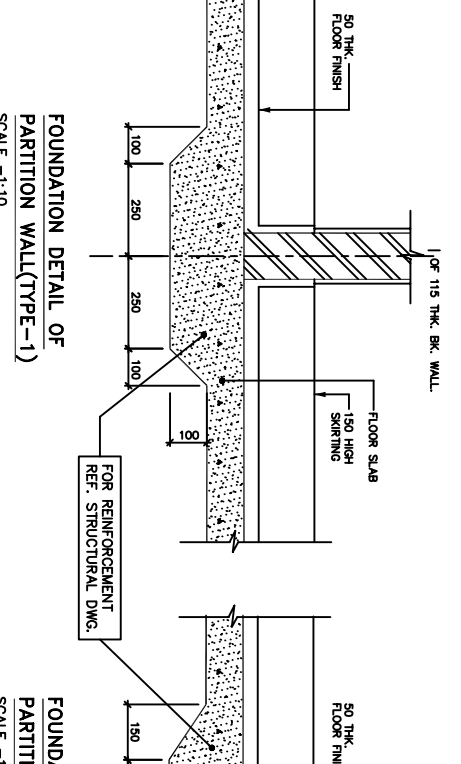
KOLKATA, MUMBAI, CHENNAI, NEW DELHI

DWG. NO. K5212-DWG-A-0002



SCHEDULE OF R.C.C. LINTEL

| SPAN IN MM. | SIZE | REINFORCEMENT | STIRRUPS |
|-------------|------|---------------|-----------|
| 300 | 230 | 2-10 / 2-10 | 8@100/c. |
| 500 | 230 | 2-10 / 2-10 | 8@100/c. |
| 1000 | 230 | 2-10 / 2-10 | 8@150/c. |
| 1500 | 230 | 2-10 / 2-12 | 10@200/c. |
| 2000 | 230 | 3-12 / 3-12 | 10@200/c. |
| 2500 | 230 | 3-12 / 3-16 | 10@200/c. |
| 3000 | 230 | 3-16 / 4-16 | 12@200/c. |
| 3500 | 230 | 3-16 / 4-16 | 12@200/c. |
| 4000 | 230 | 3-16 / 3-20 | 12@200/c. |
| 4500 | 230 | 3-16 / 3-20 | 12@200/c. |
| 5000 | 230 | 3-16 / 4-20 | 12@200/c. |
| 5500 | 230 | 3-16 / 4-20 | 12@200/c. |
| 6000 | 230 | 3-16 / 4-20 | 12@200/c. |



FOR TENDER PURPOSE ONLY

| SPAN | SIZE | REINFORCEMENT | STIRRUPS |
|------|------|---------------|-----------|
| 300 | 230 | 2-10 / 2-10 | 8@100/c. |
| 500 | 230 | 2-10 / 2-10 | 8@100/c. |
| 1000 | 230 | 2-10 / 2-10 | 8@150/c. |
| 1500 | 230 | 2-10 / 2-12 | 10@200/c. |
| 2000 | 230 | 3-12 / 3-12 | 10@200/c. |
| 2500 | 230 | 3-12 / 3-16 | 10@200/c. |
| 3000 | 230 | 3-16 / 4-16 | 12@200/c. |
| 3500 | 230 | 3-16 / 4-16 | 12@200/c. |
| 4000 | 230 | 3-16 / 3-20 | 12@200/c. |
| 4500 | 230 | 3-16 / 3-20 | 12@200/c. |
| 5000 | 230 | 3-16 / 4-20 | 12@200/c. |
| 5500 | 230 | 3-16 / 4-20 | 12@200/c. |
| 6000 | 230 | 3-16 / 4-20 | 12@200/c. |

FOUNDATION DETAIL OF PARTITION WALL (TYPE-1)
SCALE - 1:10

FOUNDATION DETAIL OF PARTITION WALL (TYPE-2)
SCALE - 1:10

FOUNDATION DETAIL OF EXTERNAL WALL
SCALE - 1:10

FOUNDATION DETAIL OF LOAD BEARING WALL
SCALE - 1:10

ARCHITECTURAL STANDARD DETAILS

20 MW GAS TURBINE POWER PLANT

OIL INDIA LIMITED
DULAJAN, ASSAM

DEVELOPMENT CONSULTANTS PVT. LTD.
CONSULTING ENGINEERS

KOLKATA, MUMBAI, CHENNAI, NEW DELHI

SCALE: 1:1

DATE: 20.06.06

APPROVED: XX

DWG. NO. K5212-DWG-A-0003

REV. B