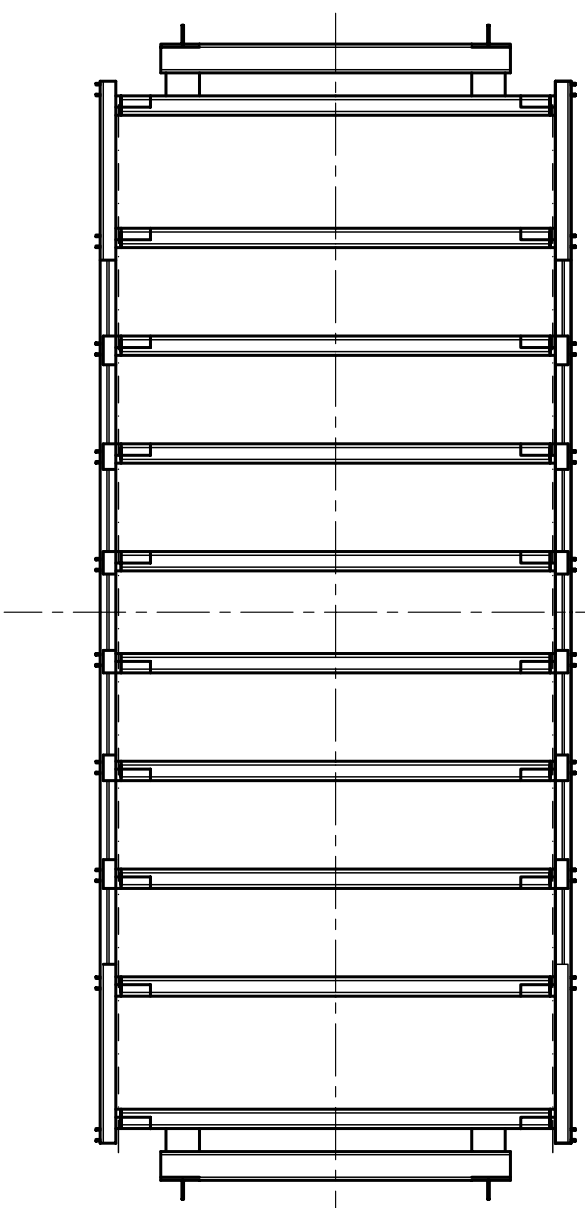
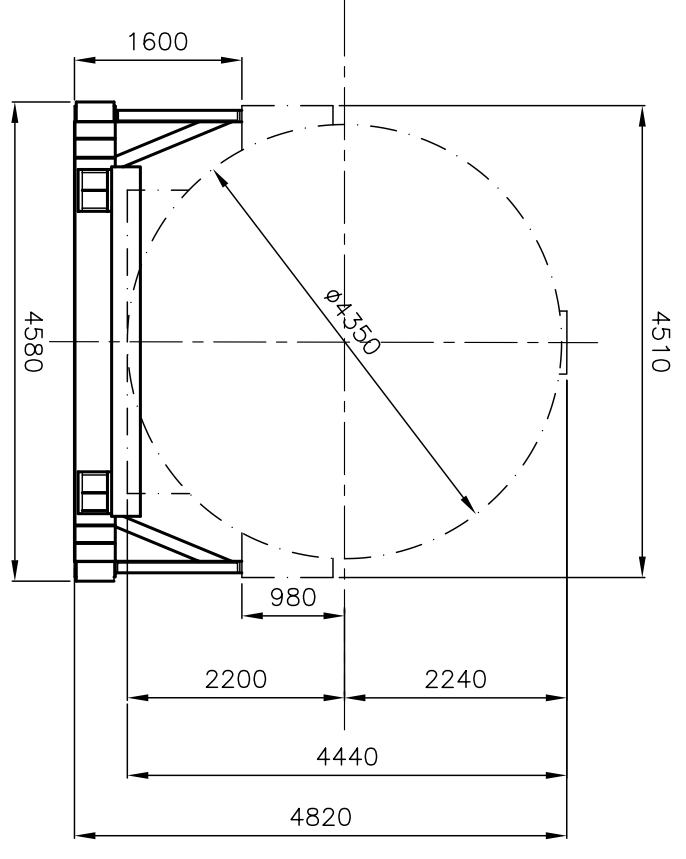
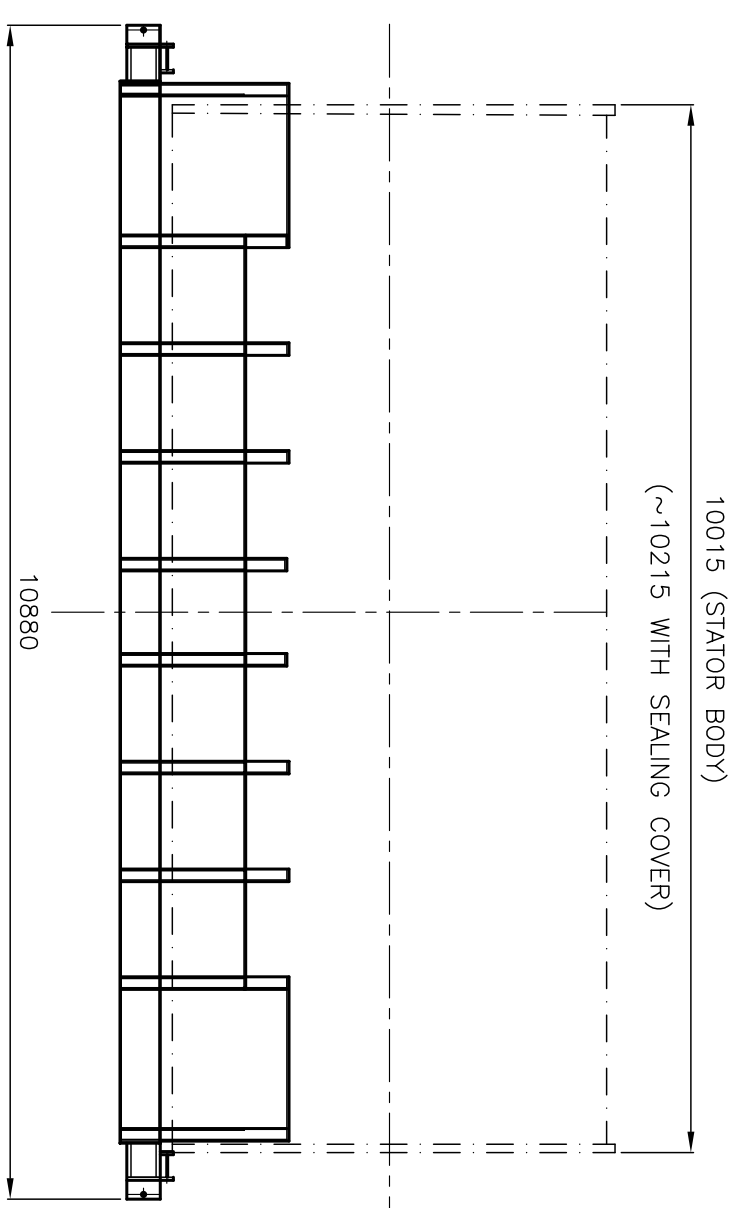


DRAWING NO. 6292-EGL



NOTES

1. GROSS WEIGHT OF STATOR FOR TRANSPORT = 443 TONNES
2. WEIGHT OF LOADING FIXTURE = 27 TONNES
3. TOTAL WEIGHT OF TG TRANSPORTATION = 470 TONNES
4. OVER ALL LENGTH = 10880 MM
5. OVER ALL WIDTH = 4580 MM
6. OVER ALL HEIGHT = 4820 MM (ABOVE TRAILER)
7. HEIGHT & WIDTH OF TRAILER NOT SHOWN.

COPYRIGHT AND CONFIDENTIAL
 THE INFORMATION ON THIS DOCUMENT IS THE PROPERTY OF BHARAT HEAVY ELECTRICALS LIMITED
 IT MUST NOT BE USED DIRECTLY OR INDIRECTLY IN ANY WAY DETRIMENTAL TO THE INTEREST OF THE COMPANY.

INVENTORY NO. SIGN & DATE REF. DRG NO.

REV.	DATE	ALTERED	CHECKED

BHARAT HEAVY ELECTRICALS LTD.
 2,215 HARDWAR
 TYPE OF PRODUCT: ROAD TRANSPORT OF 800MW
 OR
 NAME OF CUSTOMER/ PROJECT: T.G.STATOR

DEPT. EME	SCALE 1:20	WEIGHT(Kg.) -
CODE 4133		

DRN	NAME	SIGN	DATE	NO.OF VAR.
CHD	P.N.MOURYA	SD/-	07.05.09	
APD	A.SHARMA	SD/-	07.05.09	
	R.C.BAJPAT	SD/-	07.05.09	73, 74

TITLE: TRANSPORT DIMENSIONS OF THDF-125/67 TG STATOR
 DRAWING NO. TGE-2679
 SHEET NO. 122 OF 23 SHEETS
 SIZE A2