

SL NO.	DRAWING NO.	COMP CODE.	DIMENSION															
			Md x P -6g	b (Js15)	$\phi d_1$ (Js16)	$\phi d_2$ (Js16)	$\phi d_3$ (Js16)	e	f	$\phi g$ (h16)	h (Js16)	k (Js16)	m (Js16)	$\gamma_1$	$\gamma_2$	$\gamma_3$	t	WT IN KG.
1.	3-V-1129-06620	96452542	M24	38.50	50.80	91.00	50.80	18	5	19.0	45.80	20.65	24.65	9	12	2	47	1.4
2.	3-V-1029-06620	96452543	M36x3	55.60	75.95	127.25	70.95	26	8	30.0	65.95	28.65	32.80	13	18	3	66	4.75
3.	3-V-1033-06620	96452998	M48x3	70.60	101.10	167.75	91.50	35	8	40.0	86.10	38.80	46.80	18	22	4	83	6.3
4.	3-V-L805-06620	96460529	M36x4	55.60	75.95	127.25	70.95	26	8	30.0	65.95	28.65	32.80	13	18	3	66	4.75
5.	3-V-L820-06620	96460530	M42x4.5	65.60	86.10	145.75	81.50	30	8	35.0	75.95	32.65	38.80	15	20	3	77	5.25
6.	3V.L793-06620	96460695	M80x6	105.7	131.25	267.6	141.25	50	14	71	131.25	63.95	63.95	-	35	5	127	18.0
7.	3VL794-06620	96460696	M64	90.7	111.10	211.45	111.10	42	14	55.7	106.1	50.95	50.95	-	25	5	108	11.0
8.	3VL789-06620	96460794	M60x4	90.7	111.10	211.45	111.10	42	14	55.7	106.1	50.95	50.95	-	25	5	108	10.6

## NOTES:

1. EYE BOLT SHALL COMPLY WITH IS:4190 IN RESPECT OF REQUIREMENT NOT COVERED IN THIS DRAWING.

2. MATERIAL: STEEL TO CLASS. 2 OF IS:1875

3. OTHER REFERED STANDARDS:

IS:1367-TECHNICAL SUPPLY CONDITIONS FOR THREADED STEEL FASTENERS.

IS:1875 - SPECIFICATION FOR CARBON STEEL, BILLETS, BLOOMS AND SLABS FOR FORGINGS.

IS:2614 - METHODS FOR SAMPLING OF FASTENERS.

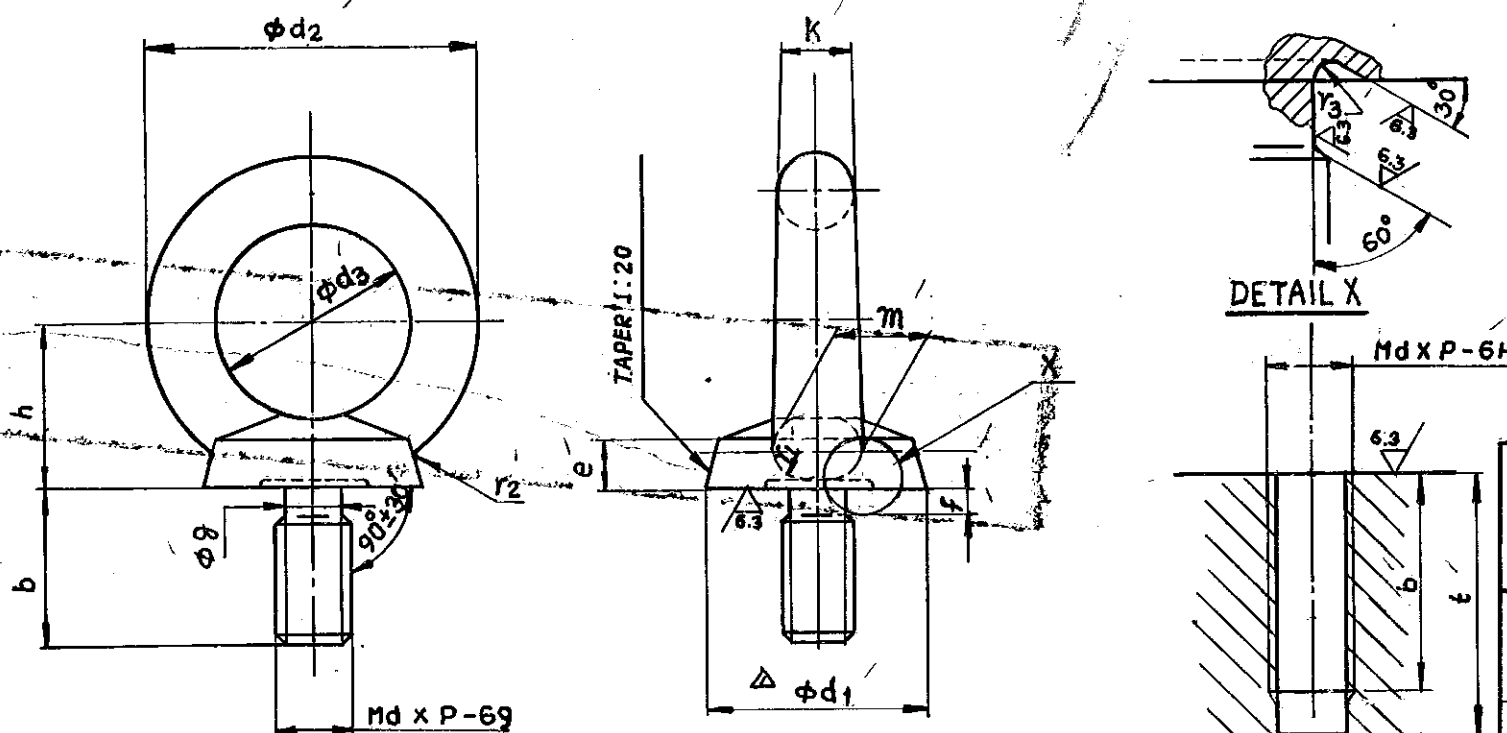
IS:4218-ISOMETRIC SCREW THREADS.

4. TEST CERTIFICATE ACCORDING TO IS:4190, SHALL BE OBTAINED ALONGWITH EACH SUPPLY.


REV. DATE ALTD. MPS MPS  
04 27.3.97 CHD: APPD: S. K.

SL. NO. 8 ADDED

(X01)



## BHARAT HEAVY ELECTRICALS LTD., BOILER PLANT UNIT, TIRUCHIRAPALLI-14

<div>FIRST ANGLE</div> <div></div>	<div>SCALE</div> <div>N.T.S.</div>	<div>DRAWN</div> <div>R. Rajkumar</div>	<div>TOTAL NET WT. (kg)</div>
		<div>CHECKED</div> <div>M.R.K. M.L.</div>	<div>TYPE</div>
		<div>APPROVED</div> <div>V.B. [Signature]</div>	
<div>ALL DIMENSIONS IN MILLIMETRES</div>		<div>DATE</div>	<div>NEW/OLD DRG. NO.</div>

## CAUTION

THE INFORMATION CONTAINED IN THIS DRAWING IS THE PROPERTY OF BHARAT HEAVY ELECTRICALS LTD., BOILER PLANT UNIT, TIRUCHY-14 AND SHALL NOT BE USED WITHOUT THEIR EXPRESS WRITTEN PERMISSION IN ANY FORM OR PART THEREOF FOR ANY OTHER PURPOSE THAN FOR WHICH IT IS SENT TO YOU.



33-115

### EYE BOLT (WITH COLLAR)

DRAWING NO.

3-V-0000-06620

REVISION

REV. DATE	ALT.: P.R.K. M. L.	REV. DATE	ALTD: MPS MPS	REV. DATE	ALTERED R.L. S. K.
03 12.4.95	CHD: APPD: S. K.	02 28.6.93	CHD: S. K.	01 16.4.93	CHECKED S. K.
SL. NO. 6 & 7 INCLUDED		SL. NO. 4 & 5 INCLUDED		ZONE $\phi d_1$ WAS $\phi d_2$ DCN No. TA 0250	