

LEGEND	
<div>CELDA 01</div>	AREVA NUMBERING
<div>BD</div>	BURSTING DISC
<div>MAD</div>	MOISTURE ABSORBING DEVICE
<div>DS</div>	GAS DENSITY SENSOR
<div>PDC</div>	PARTIAL DISCHARGE COUPLER
<div></div>	PRESSURE GAGE
<div>PO</div>	VIEWING WINDOW
<div>V</div>	FILLING VALVE
<div></div>	PARTITION INSULATOR
<div></div>	SUPPORT INSULATOR
<div></div>	LOCAL CONTROL CUBICLE
<div></div>	DISCONNECTOR
<div></div>	EARTHING SWITCH
<div></div>	REFERENCE PIN

SUMMARY	
PAGE NO	DESCRIPTION
1	Summary
2 ,3	Substation overall view
4,5	Sectional details
6	3D view

G	I	--/--	I	I	I
F	Revised as per Client comments	15/12/11	PR	PR	GK
E	Revised as per Client comments	13/12/11	PR	PR	MJ
D	Revised as per Client comments	30/11/11	PR	PR	MJ
C	Revised as per MOM ,dt 18th Oct 2011	04/11/11	PR	PR	MJ
B	Revised as per client discussion	04/10/11	AP	PR	GR
A	First Issue	20/07/11	PR	PR	GR
Rev.	Description	Date	Prepa.	Check.	Releas.

This document and any information or descriptive matter set out it are confidential and copyright property and must not be disclosed,loaned,copied or used for any purpose whatsoever without prior written permission.

CREATION DATE 19/09/11 NAME RAMESH	MODIFICATION DATE 15/12/11 NAME RAMESH	VERIFICATION DATE 15/12/11 NAME RAMESH	APPROBATION DATE 15/12/11 NAME MOHAN KUMAR
--	--	--	--


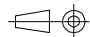
A1H		420kV GIS (T155) EQUIPMENT LAYOUT & SECTIONAL VIEWS
SCALE:NTS	AQ : 3	
COM.NO: GD027		
VOLTAGE : - 420kV		

	PAGE 1/6	GD53A000057	REVISION F
	T&D GIS/CHENNAI INDIA		

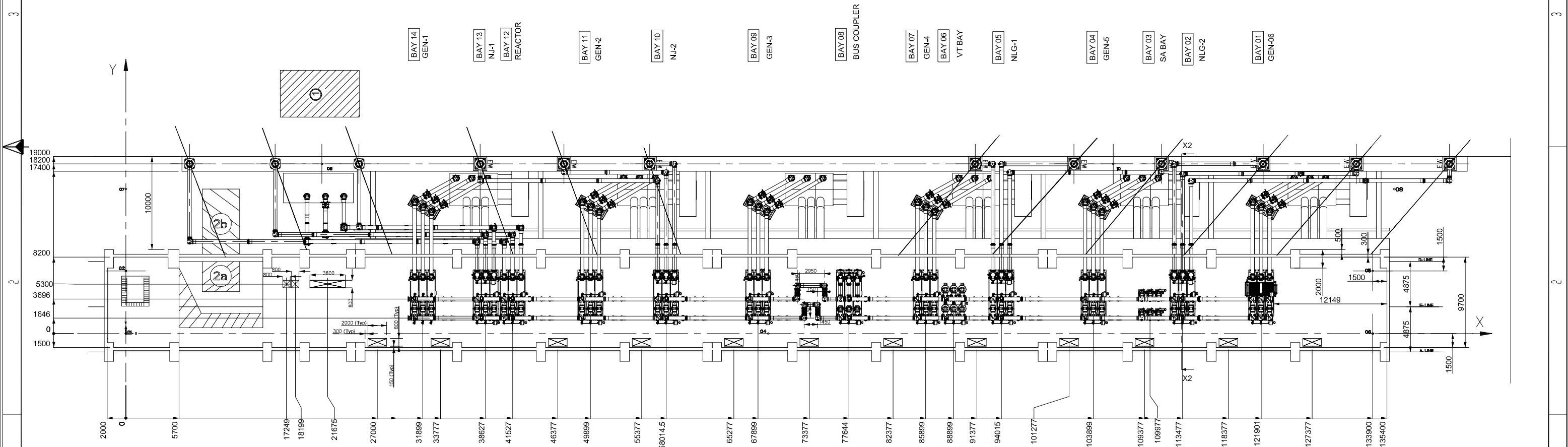
Reference Documents:-
Gas Single Line Diagram : GD53A000056
Colour: GIS-Housing RAL 7038
Colour: GIB enclosure RAL 9016

SYSTEM PARAMETER	
Rated current (Ir)	
-Bus bar & Bus Coupler	Ir = 4000 A
-Line Bays	Ir = 2000 A
-Generator bays/Reactor	Ir = 800 A
Rated Voltage	Ur = 420 kV, fr =50Hz
Rated short circuit current	Ik = 50 kA, 1 Sec
Power frequency withstand voltage(Ud)	
-Ph to earth between phases	650 kV
-Across open terminals	815 kV
Lightning impulse withstand Voltage(Ud)	
-Ph to earth and between phases	1425 kV
-Between open contacts	1425(+240) kV
Switching impulse withstand Voltage(Us)	
-Ph to earth	1050 kV
-Between open contacts	900(+345)kV

SF6 DENSITY	
CIRCUIT BREAKER COMPARTMENTS	OTHERS COMPARTMENTS
BARS RELATIVE AT 20°C NOMINAL : 7.5 BARS LEVEL 1 : 6.8 BARS LEVEL 2 : 6.5 BARS	BARS RELATIVE AT 20°C NOMINAL : 6.3 BARS LEVEL 1 : 5.8 BARS LEVEL 2 : 5.5 BARS

NAME OF CUSTOMER/PROJECT				SATLUJ JAL VIDYUT NIGAM LTD. RAMPUR H.E. PROJECT (H.P.)			
	BHARAT HEAVY ELECTRICALS LTD. TRANSMISSION PROJECTS DIVISION				NAME	SIGN.	DATE
				DRAWN	RAMESH	PR	15/12/11
				CHECKED	RAMESH	PR	15/12/11
				APPROVED	MOHAN KUMAR	MJ	15/12/11
DEPT.		SCALE	CARD CODE	REF. TO ASSEMBLY DRG.		ITEM NO.	NO.OF. ITEM
CODE		N.A.					
TITLE				DRAWING NO.			REV.
420kV GIS				GD53A000057			F
EQUIPMENT LAYOUT & SECTION VIEWS				SHEET No. 1		No. of SHEET 6	

Architectural drawing of a long, narrow building section. The drawing features a grid of vertical lines representing columns. Along the top edge, there is a series of small, repetitive units, possibly representing a roof structure or a series of small buildings. A dimension line at the bottom indicates a length of 137000. A small 'X' is visible on the right side of the drawing.





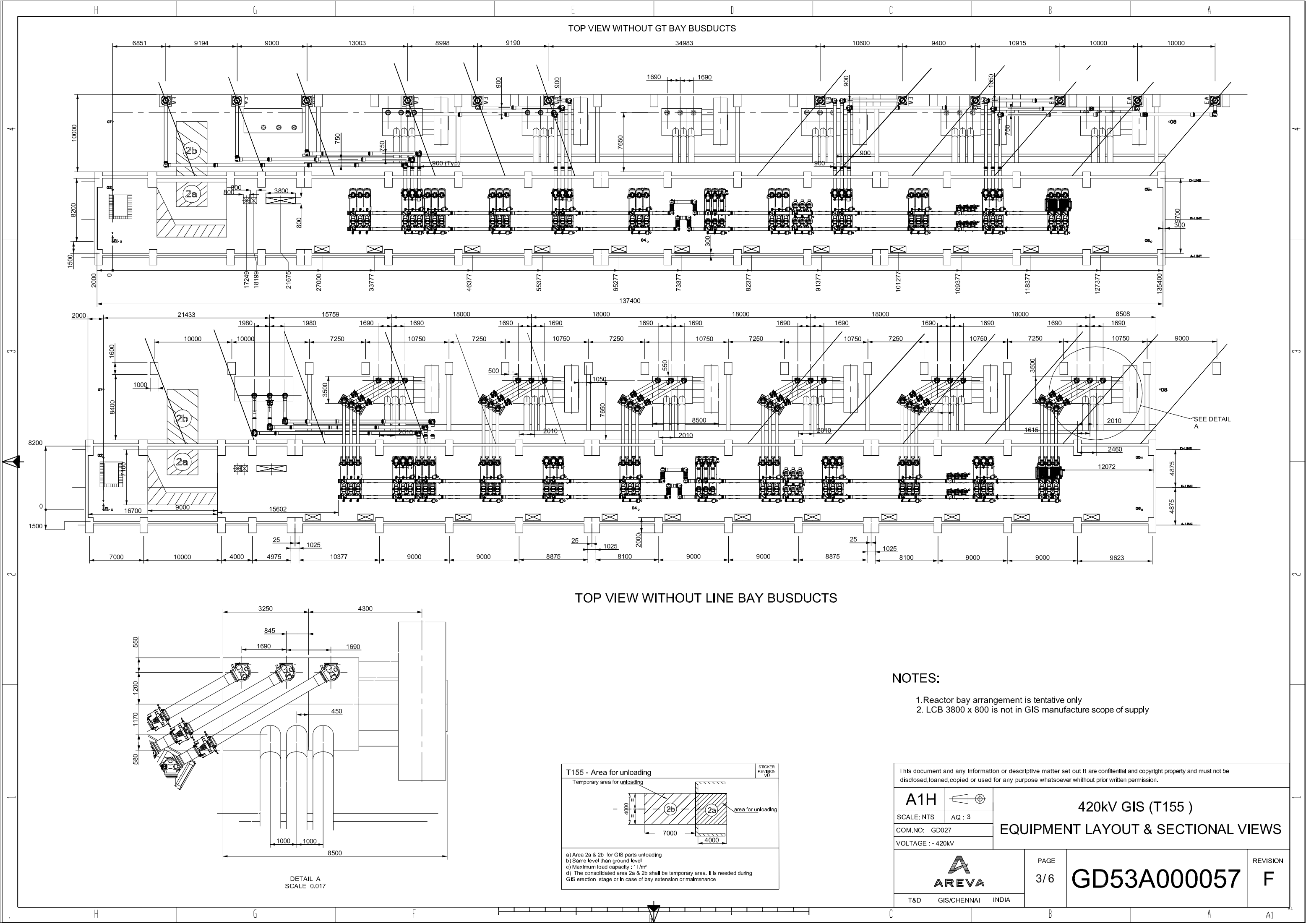
2000	0	5700	17249	18199	21675	27000	31899	33777	38627	41527	46377	49899	55377	58014.5	65277	67899	73377	77644	82377	85899	88899	91377	94015	101277	103899	109377	109977	1113477	1118377	121901	127377
------	---	------	-------	-------	-------	-------	-------	-------	-------	-------	-------	-------	-------	---------	-------	-------	-------	-------	-------	-------	-------	-------	-------	--------	--------	--------	--------	---------	---------	--------	--------

Area for HV dielectric test by air bushing (outdoor)	STICKER REVISION v0
--	---------------------------

Area reserved

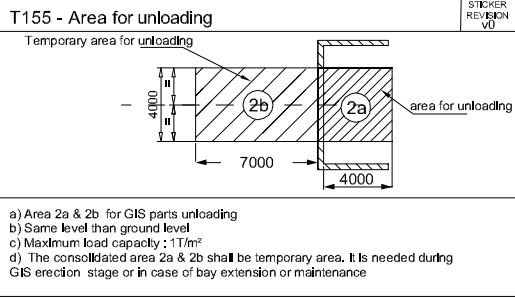
12 000 7 000 H = 10 000mm

This document and any information or descriptive matter set out it are confidential and copyright property and must not be disclosed, loaned, copied or used for any purpose whatsoever without prior written permission.				
<div style="display: flex; align-items: center;"> <div style="margin-right: 10px;">A1H</div>  </div>		<div style="font-size: 24px; font-weight: bold;">420kV GIS (T155)</div> <div style="font-size: 36px; font-weight: bold;">EQUIPMENT LAYOUT & SECTIONAL VIEWS</div>		
<div style="display: flex; justify-content: space-between;"> <div>SCALE: NTS</div> <div>AQ : 3</div> </div>				
COM.NO: GD027				
VOLTAGE : - 420kV				
		PAGE 2/6	<div style="font-size: 48px; font-weight: bold;">GD53A000057</div>	REVISION F
		<div style="display: flex; justify-content: space-between;"> <div>T&D</div> <div>GIS/CHENNAI</div> <div>INDIA</div> </div>		



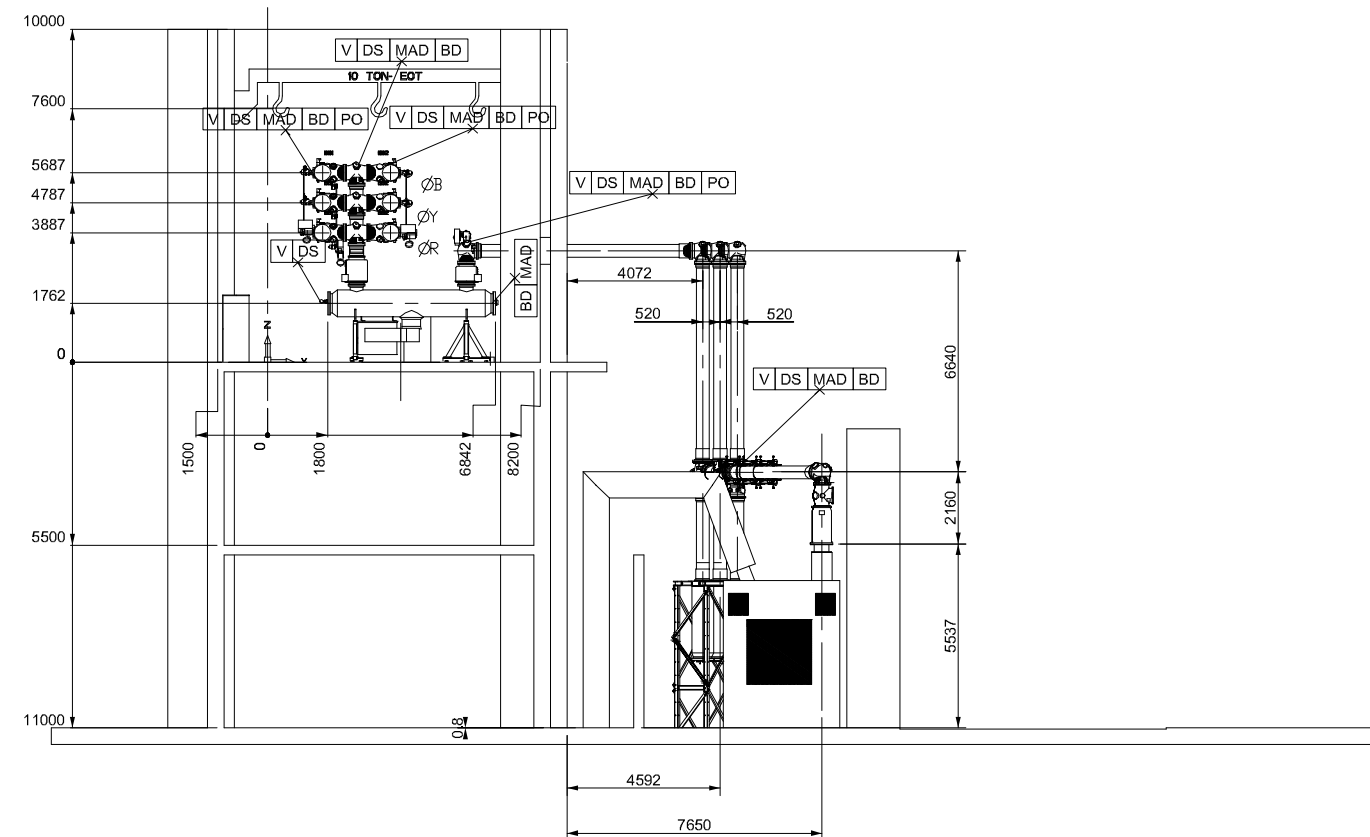
NOTES:

- 1.Reactor bay arrangement is tentative only
2. LCB 3800 x 800 is not in GIS manufacture scope of supply

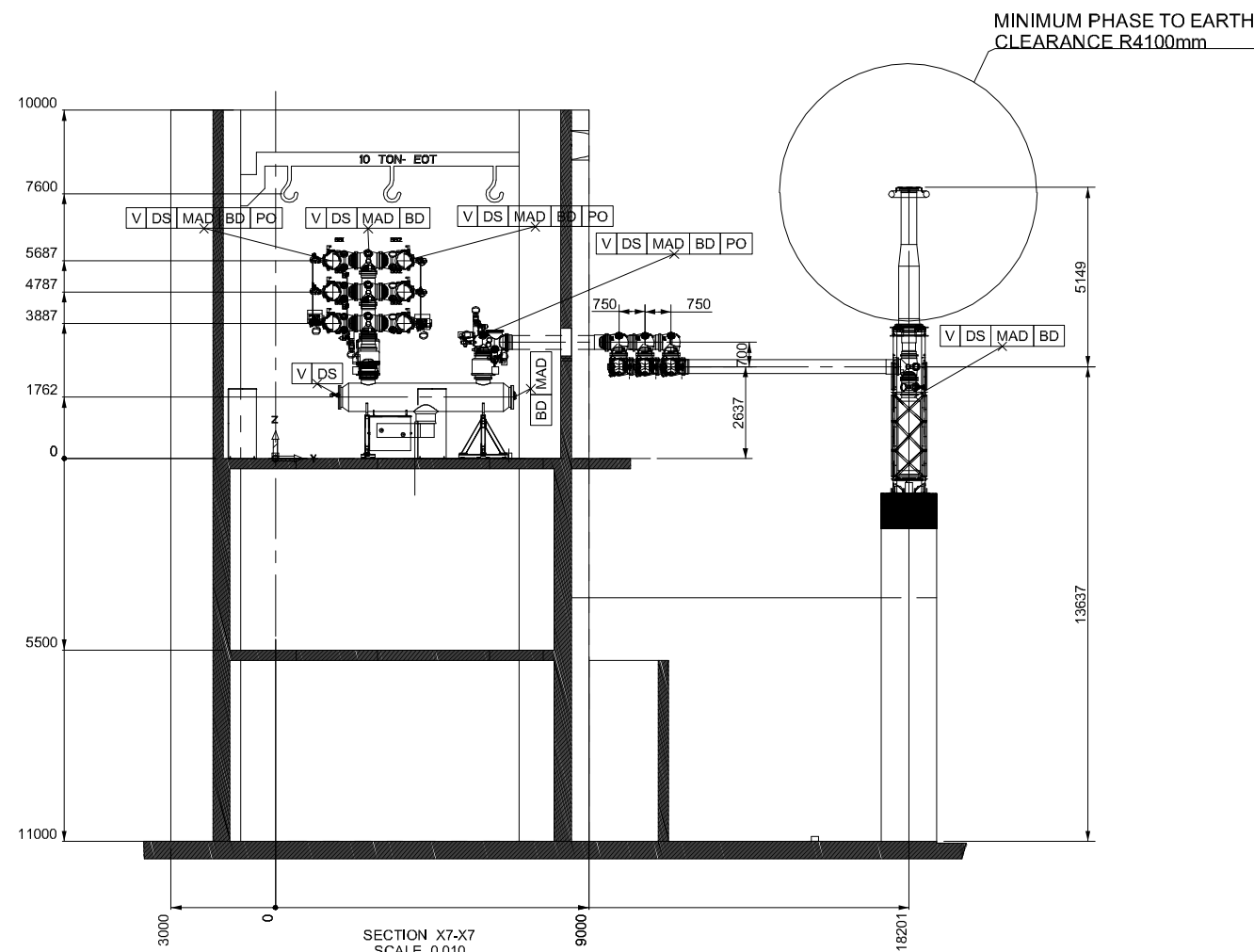


This document and any information or descriptive matter set out in it are confidential and copyright property and must not be disclosed, loaned, copied or used for any purpose whatsoever without prior written permission.		
A1H		420kV GIS (T155)
SCALE: NTS	AQ : 3	EQUIPMENT LAYOUT & SECTIONAL VIEWS
COM.NO: GD027		
VOLTAGE :- 420kV		
	PAGE 3/6	REVISION F
T&D GIS/CHENNAI INDIA		

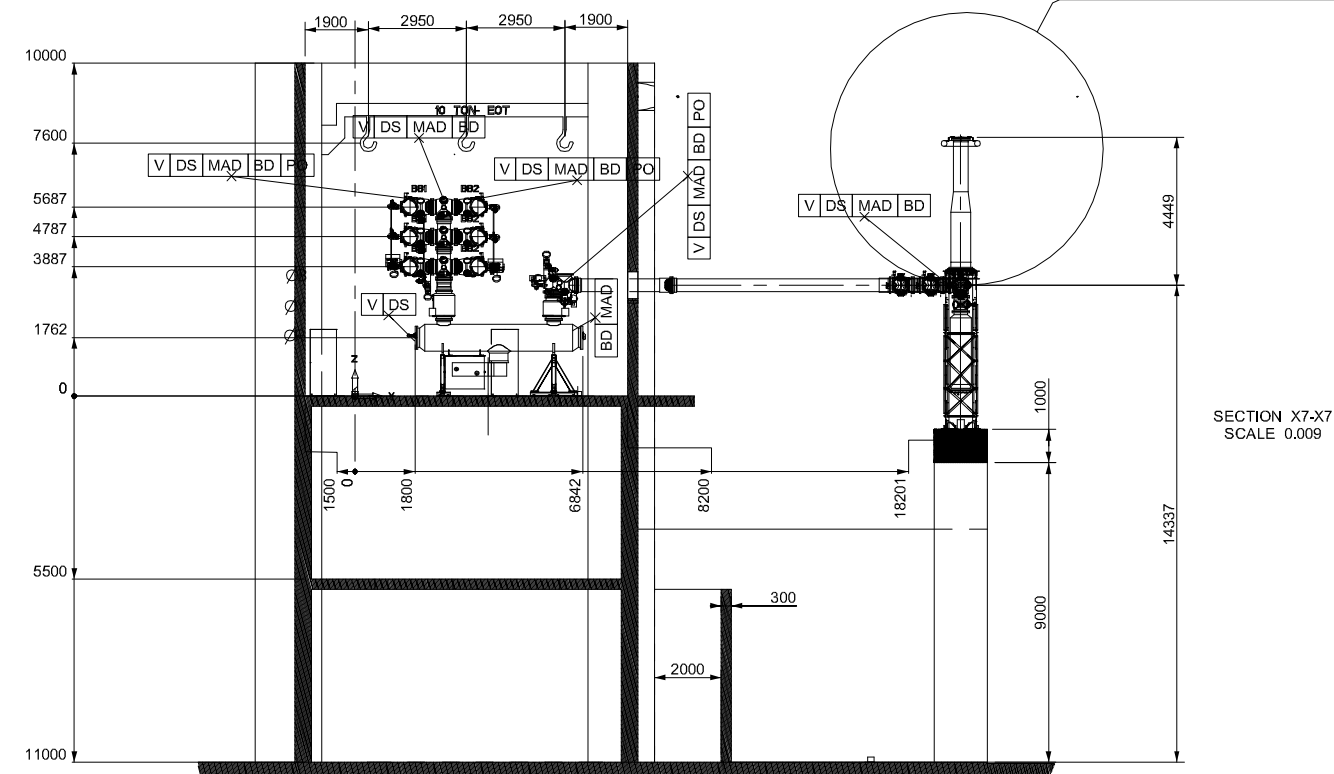
GENERATOR TRANSFORMER BAYS



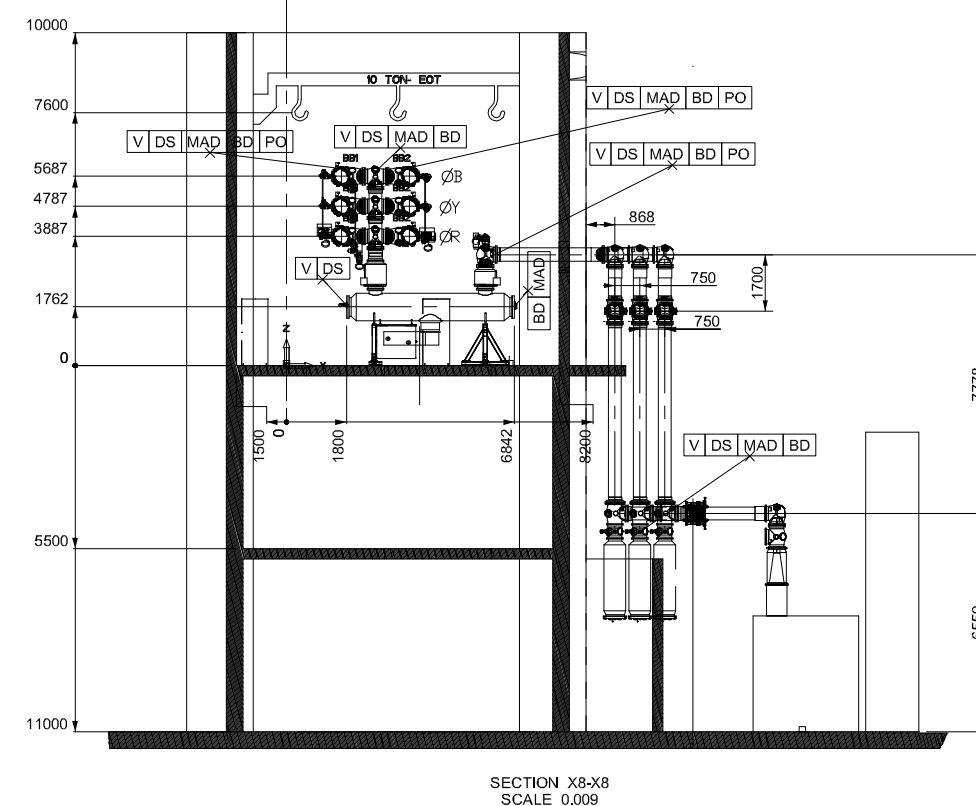
NJ-1 BAYS



NJ-2 & NLG1 & NLG 2 BAYS

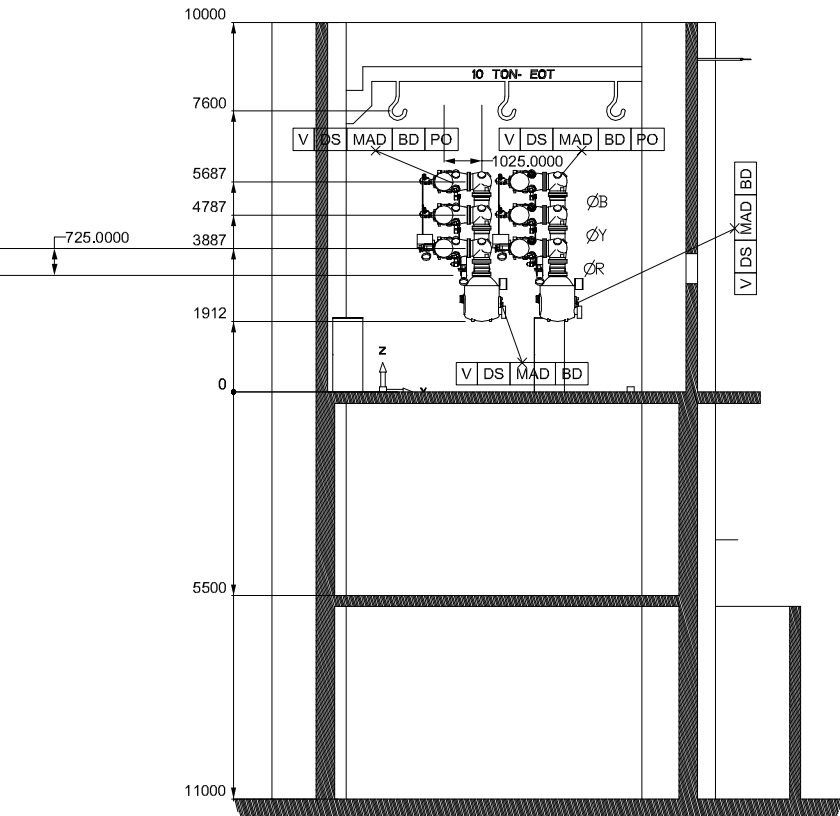


REACTOR BAY



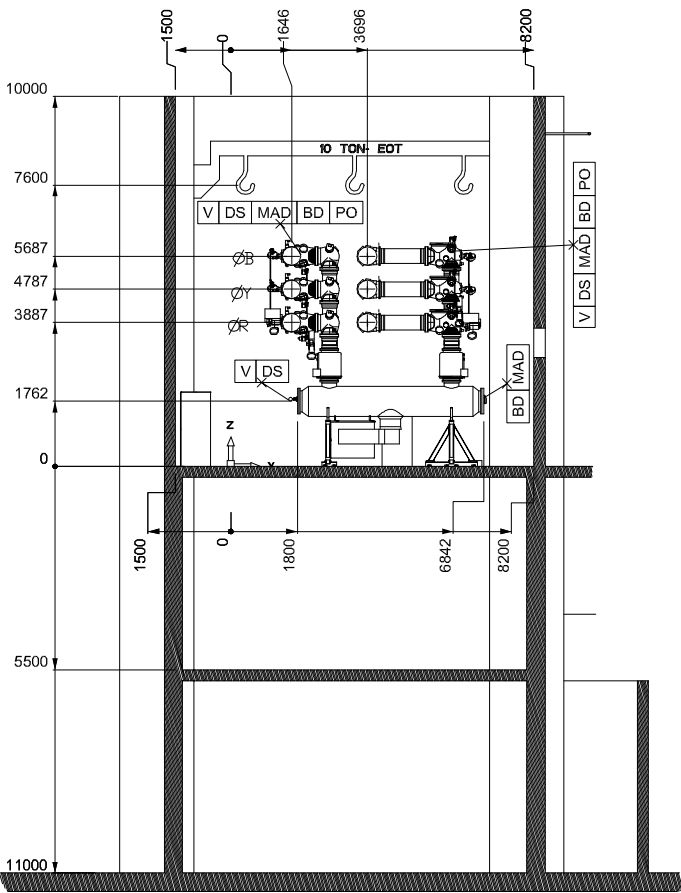
This document and any information or descriptive matter set out it are confidential and copyright property and must not be disclosed, loaned, copied or used for any purpose whatsoever without prior written permission.			
A1H		420kV GIS (T155)	
SCALE: NTS	AQ : 3	EQUIPMENT LAYOUT & SECTIONAL VIEWS	
COM.NO: GD027			
VOLTAGE : - 420kV			
		PAGE 4/6	REVISION F
T&D GIS/CHENNAI INDIA		GD53A000057	

VOLTAGE
TRANSFORMER



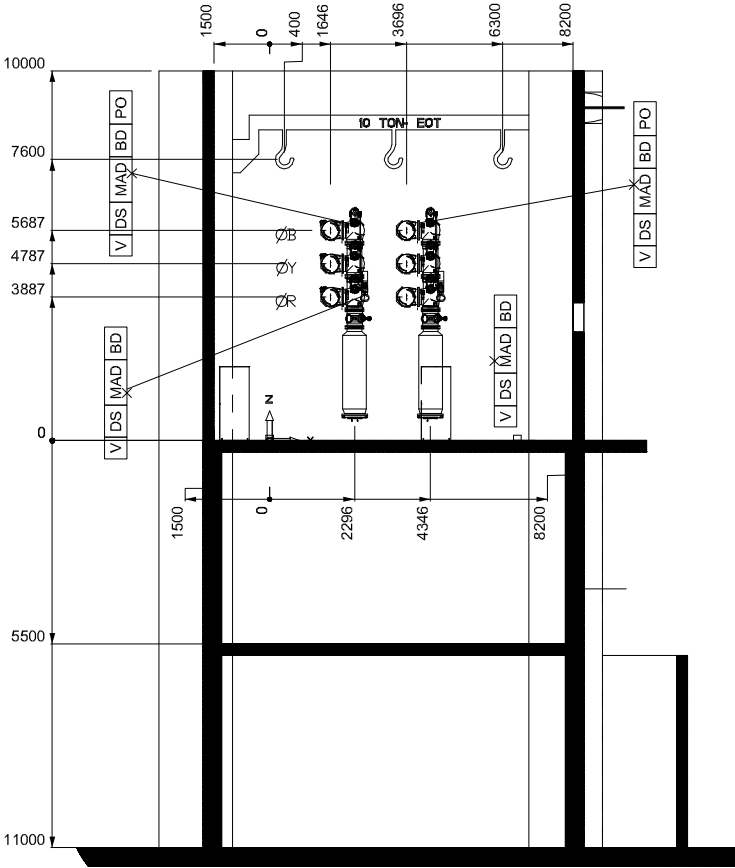
SECTION X7-X7
SCALE 0.010

BUS
COUPLER



SECTION X7-X7
SCALE 0.010

SURGE
ARRESTER

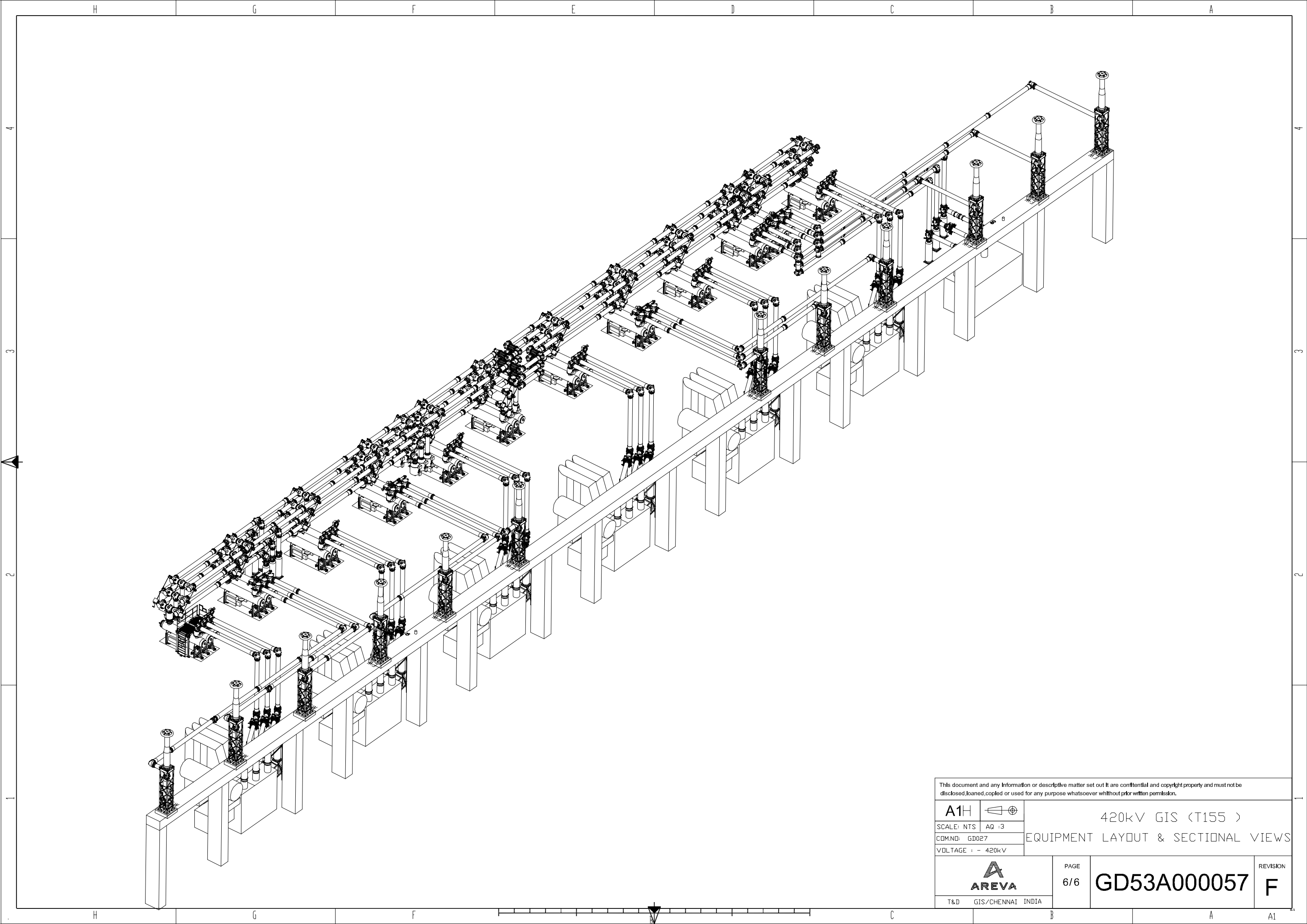



This document and any Information or descriptive matter set out It are confidential and copyright property and must not be disclosed, loaned, copied or used for any purpose whatsoever without prior written permission.

A1H	
SCALE: NTS	AQ : 3
COM.NO: GD027	
VOLTAGE : - 420kV	

420kV GIS (T155)
EQUIPMENT LAYOUT & SECTIONAL VIEWS

 T&D GIS/CHENNAI INDIA	PAGE 5/6	GD53A000057	REVISION F



This document and any information or descriptive matter set out in it are confidential and copyright property and must not be disclosed, loaned, copied or used for any purpose whatsoever without prior written permission.			
A1H		420kV GIS (T155)	
SCALE: NTS		EQUIPMENT LAYOUT & SECTIONAL VIEWS	
COM.NO: GD027			
VOLTAGE : - 420kV			
		PAGE	
T&D GIS/CHENNAI INDIA		6/6	
		REVISION	
		GD53A000057 F	