



The drawing is a detailed layout of the Switchyard Technical Building and D.G. Room. It shows the building footprint, entrance, and surrounding infrastructure. Key features include:

- Buildings:** Switchyard Technical Building (18000x20000) and D.G. Room (15000x15000).
- Infrastructure:** 3.0 M wide road, Line-1 and Line-2, and a 3000 M wide road.
- Dimensions:** Overall dimensions of 19500 M by 22500 M.
- Equipment:** Main Bus, Transfer Bus, and various units (UNIT-1, UNIT-2, UNIT-3, UNIT-4) with associated cables and transformers.
- Orientation:** North arrow pointing towards the top right.
- Annotations:** Various labels for equipment, cables, and dimensions.

S.L.	SYMBOL	EQUIPMENT DESCRIPTION	QTY.
01		132 kV, 1250 A, 20 kA FOR 1 SEC. SF6, 3 PHASE OUTDOOR TYPE MOTOR OPERATED SPRING CHARGED CIRCUIT BREAKER (CB)	8 Nos.
02		132 kV, 630 A, 20 kA FOR 1 SEC. MECHANICALLY GANGED MANUALLY OPERATED HORIZONTAL DOUBLE BREAK ISOLATOR WITH MANUALLY OPERATED ONE EARTH SWITCH (SE)	2 Sets

CLEARANCE TABLE FOR 66 kV SYSTEM	CLEARANCE(MIN)
1. PHASE TO PHASE	900 mm
2. PHASE TO EARTH	900 mm
3. SECTIONAL CLEARANCE	3500 mm
4. EQUIPMENT CONNECTION LEVEL	4600 mm (FROM GL)
5. POTENTIAL OF THE NEAREST POINT NOT AT EARTH	2500 mm
LIVE CONDUCTOR	

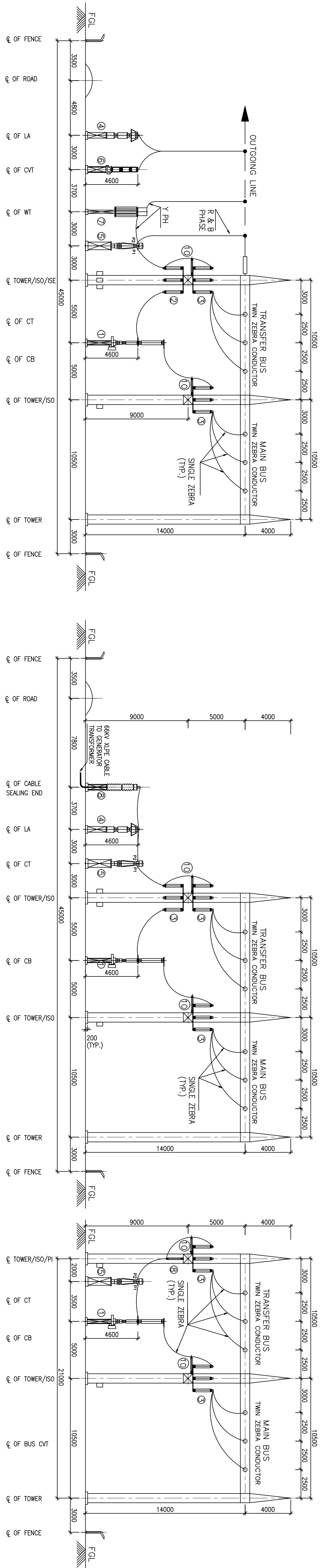
STRINGING DETAILS :-	
MAIN BUS	CONDUCTOR
TRANSFER BUS	TWIN ZEBRA
JACK BUS FOR LINE BAYS	TWIN ZEBRA
DROPPERS & EQUIPMENT CONNECTION	SINGLE ZEBRA
	INS. STRING
	SINGLE TENSION
	SINGLE TENSION
	SINGLE TENSION

	CONDUCTOR	INS. STRING
MAIN BUS	TWIN ZEBRA	SINGLE TENSION
TRANSFER BUS	TWIN ZEBRA	SINGLE TENSION
JACK BUS FOR LINE BAYS	TWIN ZEBRA	SINGLE TENSION
DROPPERS & EQUIPMENT CONNECTION	SINGLE ZEBRA	—

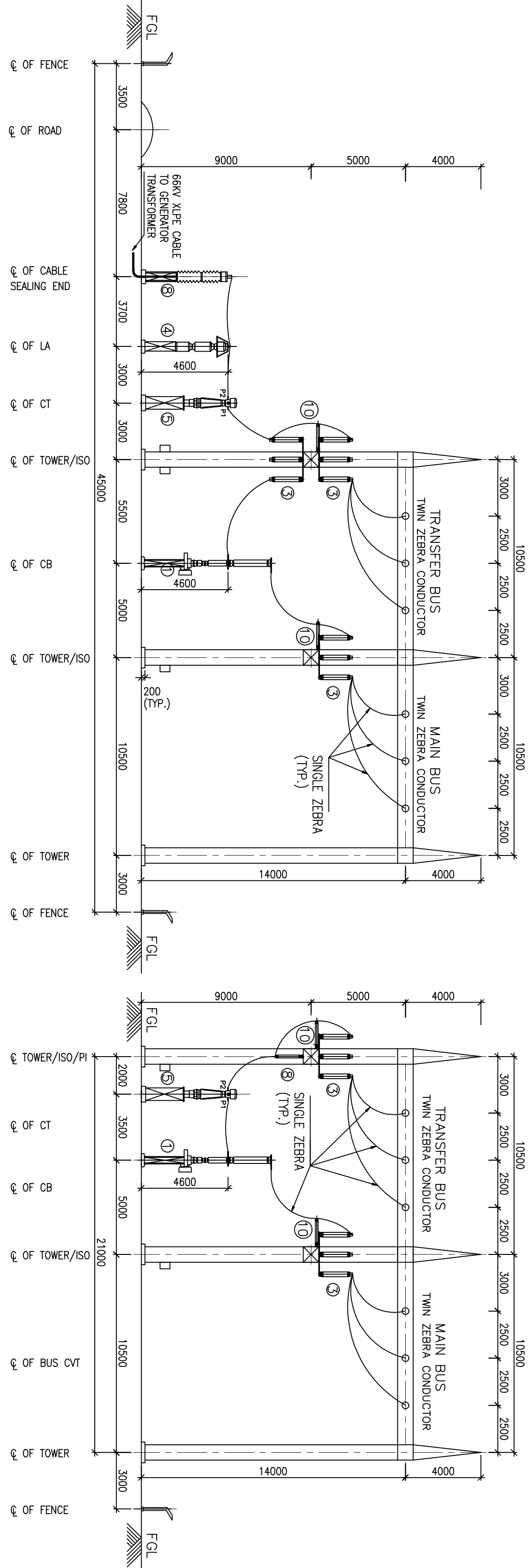
NHPC LAYOUT DRAWING
BHEL SINGLE LINE DIAGRAM- TB-3-316-510-001

[illegible]

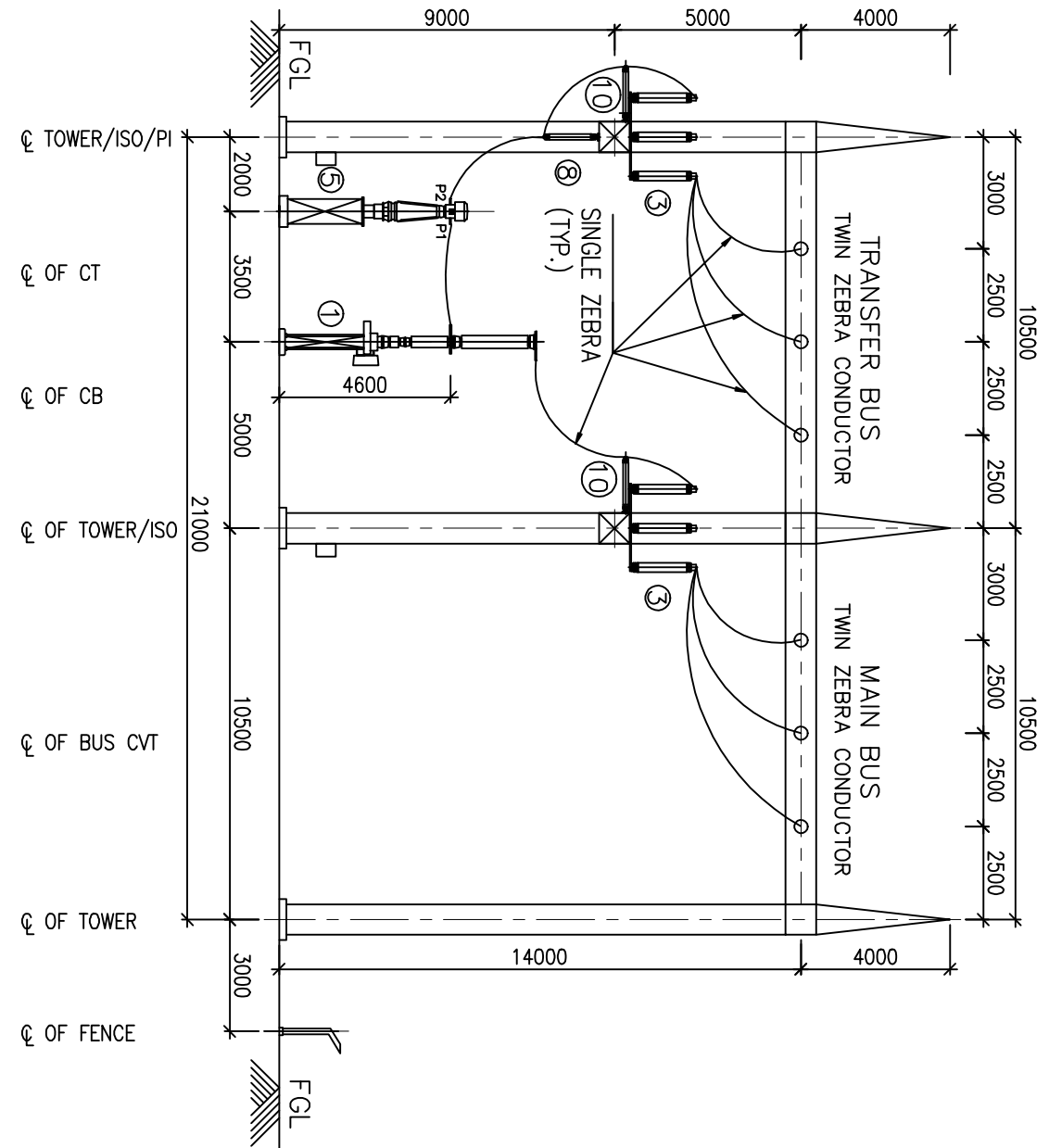
500-913-913-1-BL ON DRAWING



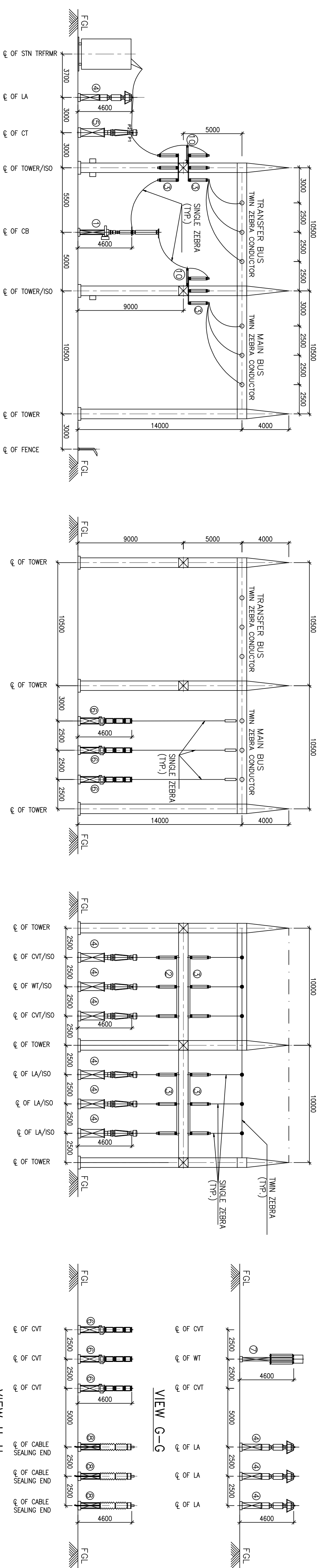
SECTION A-A



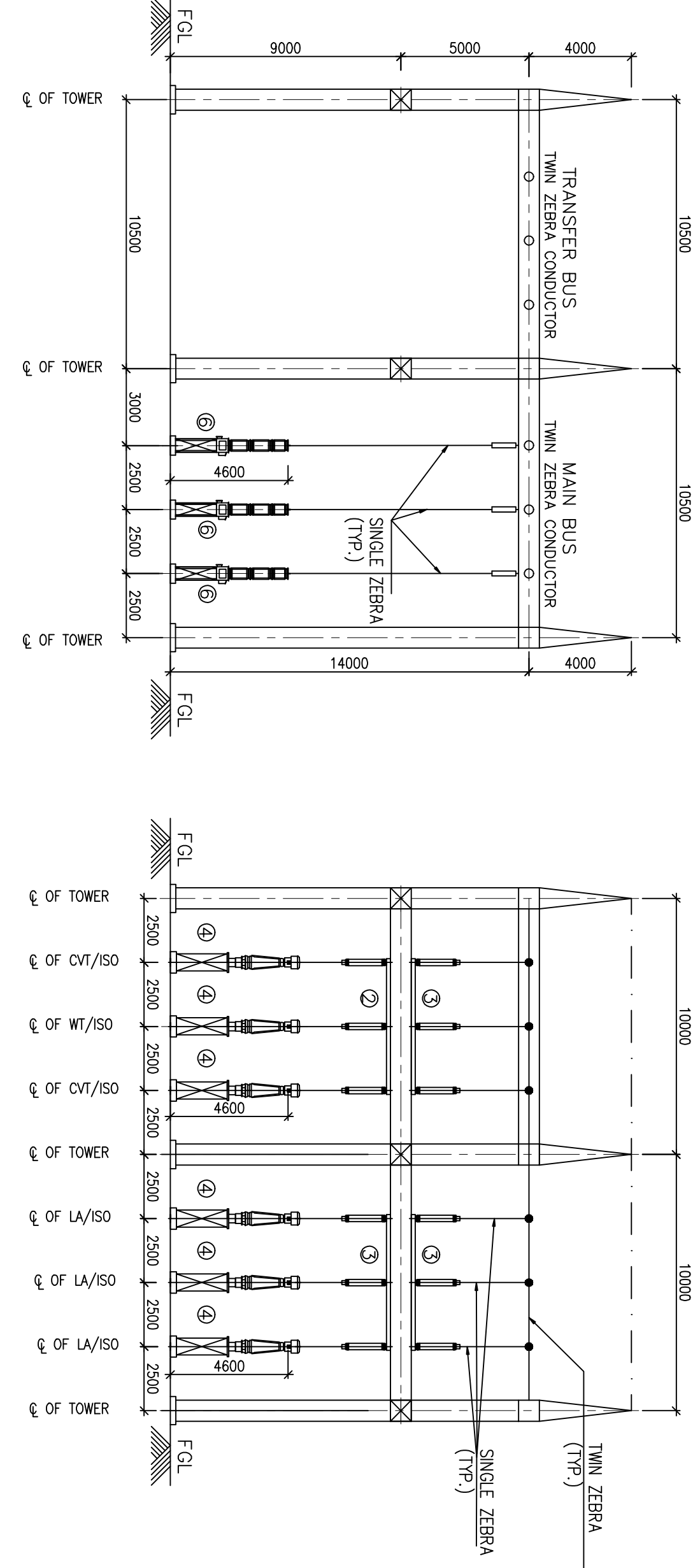
SECTION B-B



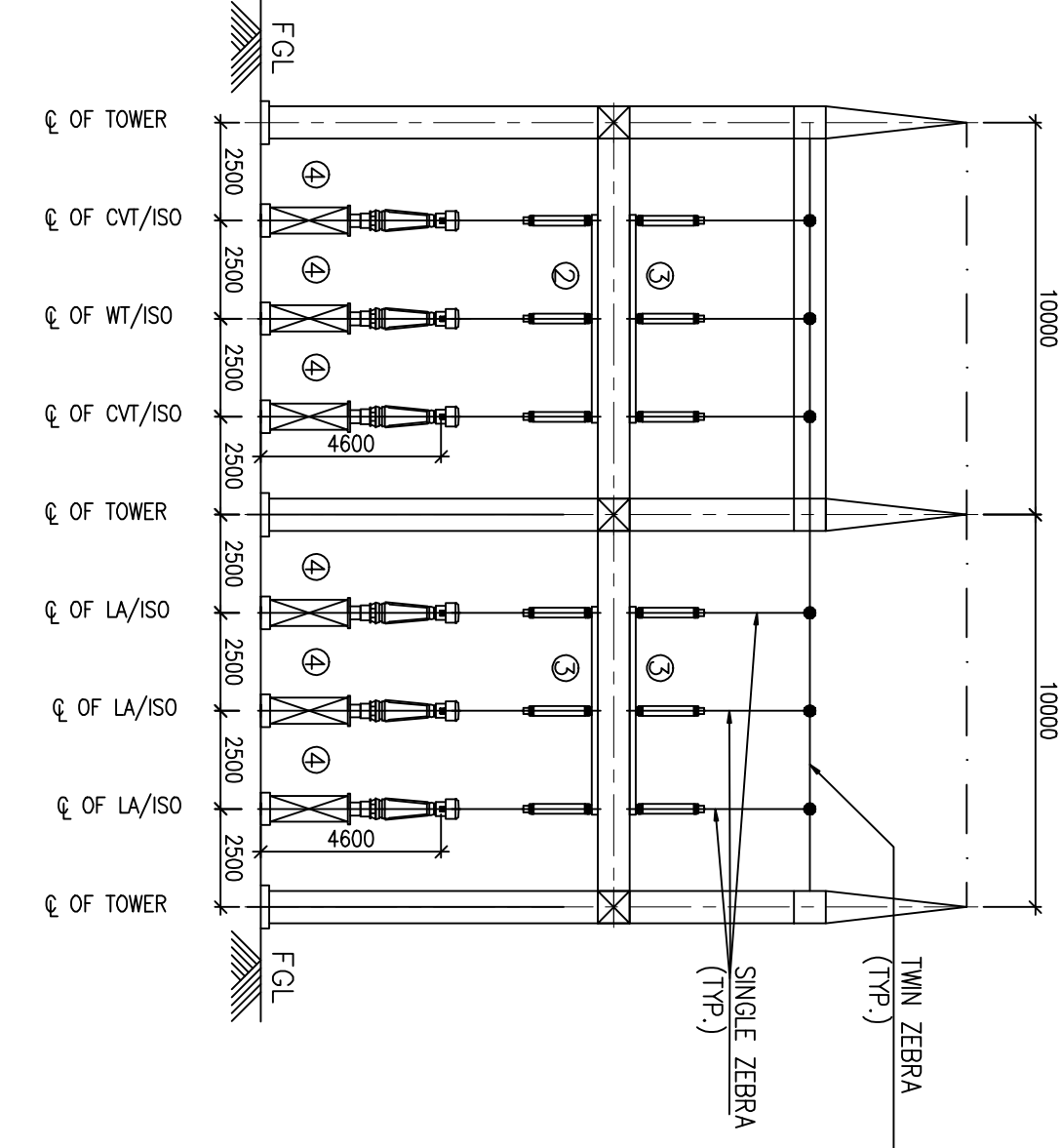
SECTION C-C



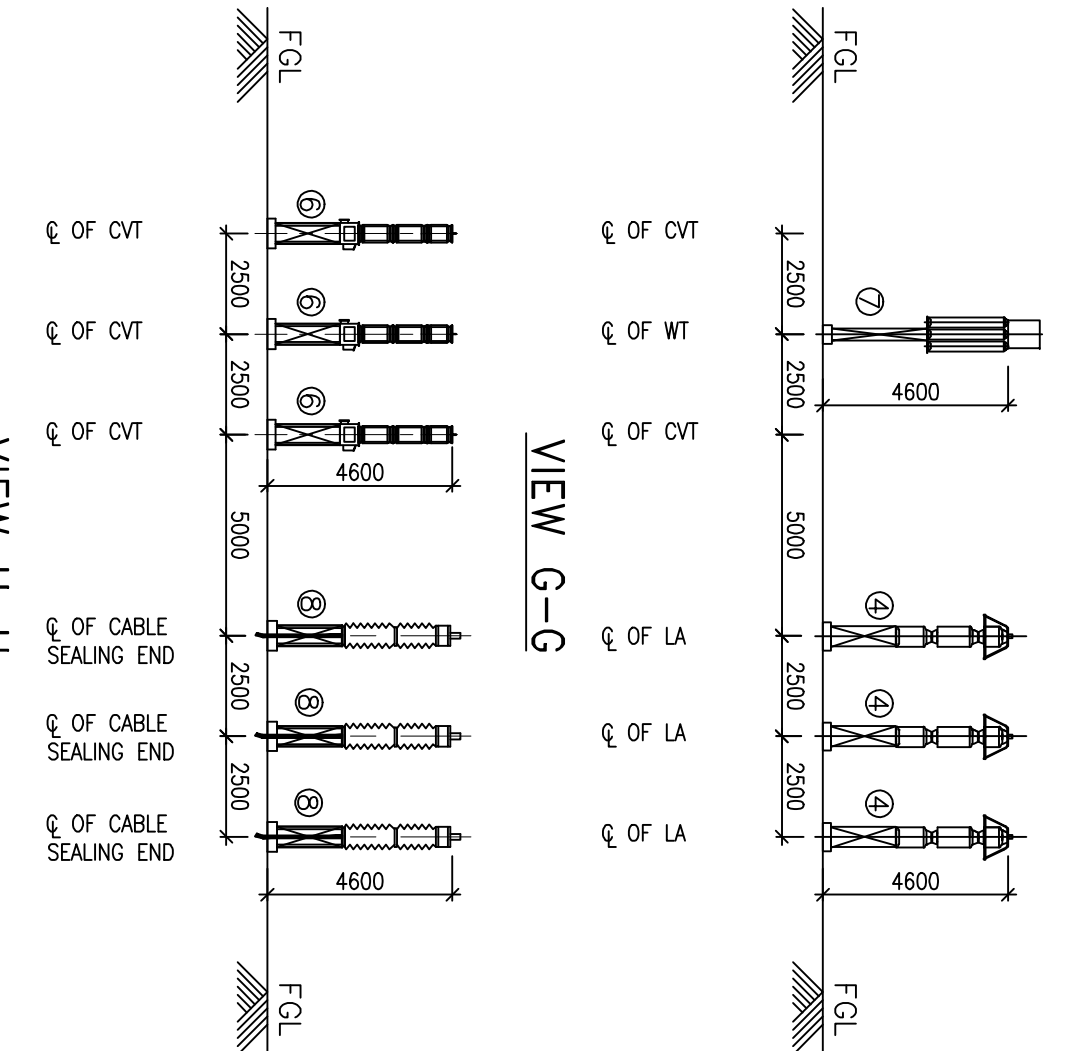
SECTION D-D



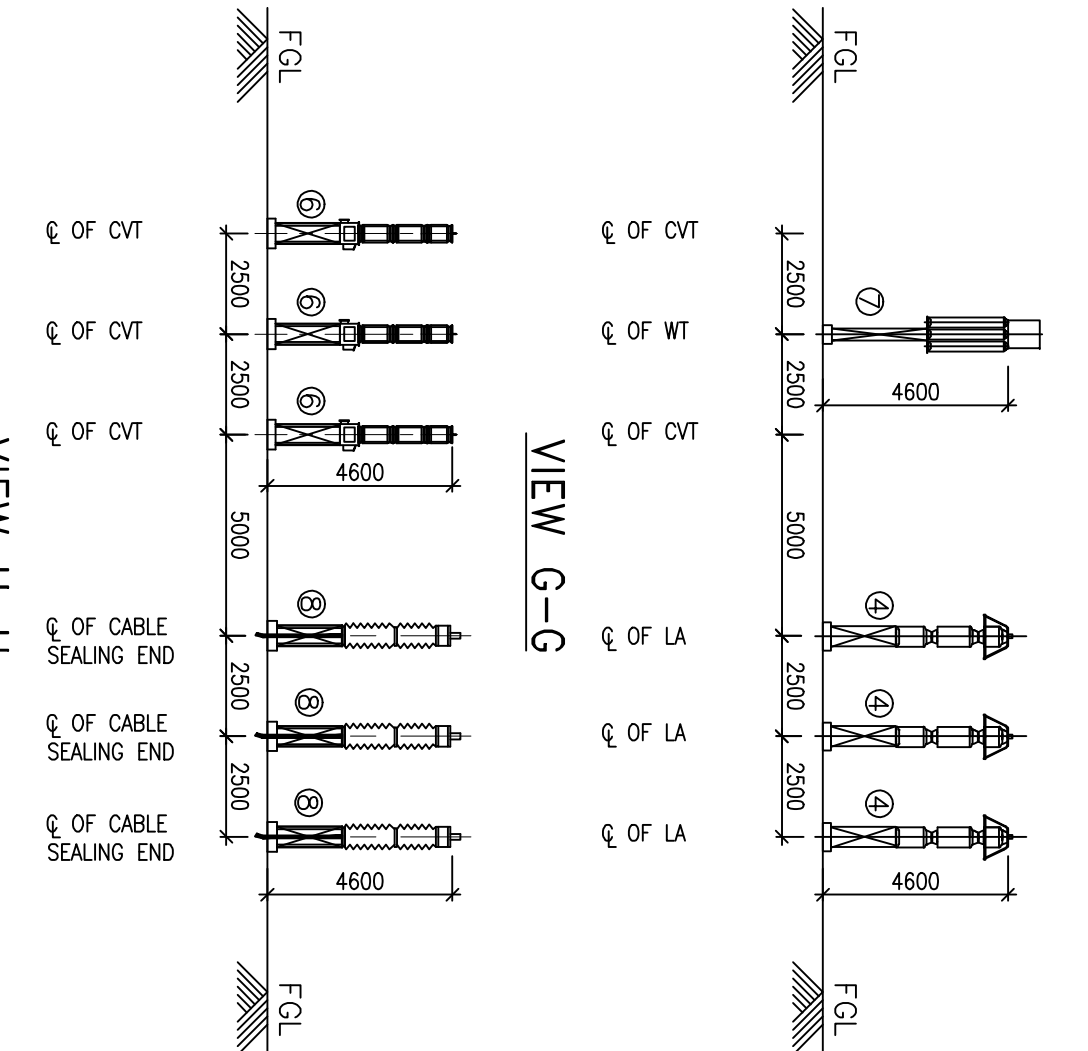
VIEW E-E



VIEW F-F



VIEW G-G



VIEW H-H

NOTES:-

1. ALL DIMENSIONS ARE IN MILLIMETRES AND ELEVATION IN METRES.
2. ALL HEIGHTS INDICATED ARE ABOVE GROUND LEVEL. PLINTH LEVEL IS 200MM ABOVE GROUND LEVEL. GRAVEL LEVEL IS 100MM ABOVE GROUND LEVEL.

REFERENCE DRAWINGS:-

1. NHPC SECTIONAL ELEVATIONS DRAWING
2. LAYOUT PLAN OF 66 KV SWITCHYARD- DRG NO. TB-1-316-316-002 REV.00

INVENTORY No.		SIGN. & DATE		REF. D	
A					
12		11		10	
12		11		10	
12		11		10	
12		11		10	
12		11		10	
12		11		10	
12		11		10	
12		11		10	
12		11		10	
12		11		10	
12		11		10	
12		11		10	
12		11		10	
12		11		10	
12		11		10	
12		11		10	
12		11		10	
12		11		10	
12		11		10	
12		11		10	
12		11		10	
12		11		10	
12		11		10	
12		11		10	
12		11		10	
12		11		10	
12		11		10	
12		11		10	
12		11		10	
12		11		10	
12		11		10	
12		11		10	
12		11		10	
12		11		10	
12		11		10	
12		11		10	
12		11		10	
12		11		10	
12		11		10	
12		11		10	
12		11		10	
12		11		10	
12		11		10	
12		11		10	
12		11		10	
12		11		10	
12		11		10	
12		11		10	
12		11		10	
12		11		10	
12		11		10	
12		11		10	
12		11		10	
12		11		10	
12		11		10	
12		11		10	
12		11		10	
12		11		10	
12		11		10	
12		11		10	
12		11		10	
12		11		10	
12		11		10	
12		11		10	
12		11		10	
12		11		10	
12		11		10	
12		11		10	
12		11		10	
12		11		10	
12		11		10	
12		11		10	
12		11		10	
12		11		10	
12		11		10	
12		11		10	
12		11		10	
12		11		10	
12		11		10	
12		11		10	
12		11		10	
12		11		10	
12		11		10	
12		11		10	
12		11		10	
12		11		10	
12		11		10	
12		11		10	
12		11		10	
12		11		10	
12		11		10	
12		11		10	
12		11		10	
12		11		10	
12		11		10	
12		11		10	
12		11		10	
12		11		10	
12		11		10	
12		11		10	
12		11		10	
12		11		10	
12		11		10	
12		11		10	
12		11		10	
12		11		10	
12		11		10	
12		11		10	
12		11		10	
12		11		10	
12		11		10	
12		11		10	
12		11		10	
12		11		10	
12		11		10	
12		11		10	
12		11		10	
12		11		10	
12		11		10	
12		11		10	
12		11		10	
12		11		10	
12		11		10	
12		11		10	
12		11		10	
12		11		10	
12		11		10	
12		11		10	
12		11		10	
12		11		10	
12		11		10	
12		11		10	
12		11		10	
12		11		10	
12		11		10	
12		11		10	
12		11		10	
12		11		10	
12		11		10	
12		11		10	
12		11		10	
12		11		10	
12		11		10	
12		11		10	
12		11		10	
12		11		10	
12		11		10	
12		11		10	
12		11		10	
12		11		10	
12		11		10	
12		11		10	
12		11		10	
12		11		10	
12		11		10	
12		11		10	
12		11		10	
12		11		10	
12		11		10	
12		11		10	
12		11		10	
12		11		10	
12		11		10	
12		11		10	
12		11		10	
12		11		10	
12		11		10	
12		11		10	
12		11		10	
12		11		10	
12		11		10	
12		11		10	
12		11		10	
12		11		10	
12		11		10	
12		11		10	
12		11		10	
12		11		10	
12		11		10	
12		11		10	
12		11		10	
12		11		10	
12		11		10	
12		11		10	
12		11		10	
12		11		10	
12		11		10	
12		11		10	
12		11		10	
12		11		10	
12		11		10	
12		11		10	
12		11		10	
12		11		10	
12		11		10	
12		11		10	
12		11		10	
12		11		10	
12		11		10	
12		11		10	
12		11		10	
12		11		10	
12		11		10	
12		11		10	
12		11		10	
12		11		10	
12		11		10	
12		11		10	
12		11		10	
12		11		10	
12		11		10	
12		11		10	
12		11		10	
12		11		10	
12		11		10	
12		11		10	
12		11		10	
12		11		10	
12		11		10	
12		11		10	
12					