



**AMENDMENT ON TECHNICAL SPECIFICATION FOR COMPRESSED AIR SYTEM  
PACKAGE  
370 MW (109 FB) CCPP YELAHANKA**

SPECIFICATION NO.: PE-TS-409-555-A001

AMENDMENT NO # 1

REV. NO. 00

DATE: 26/02/2016

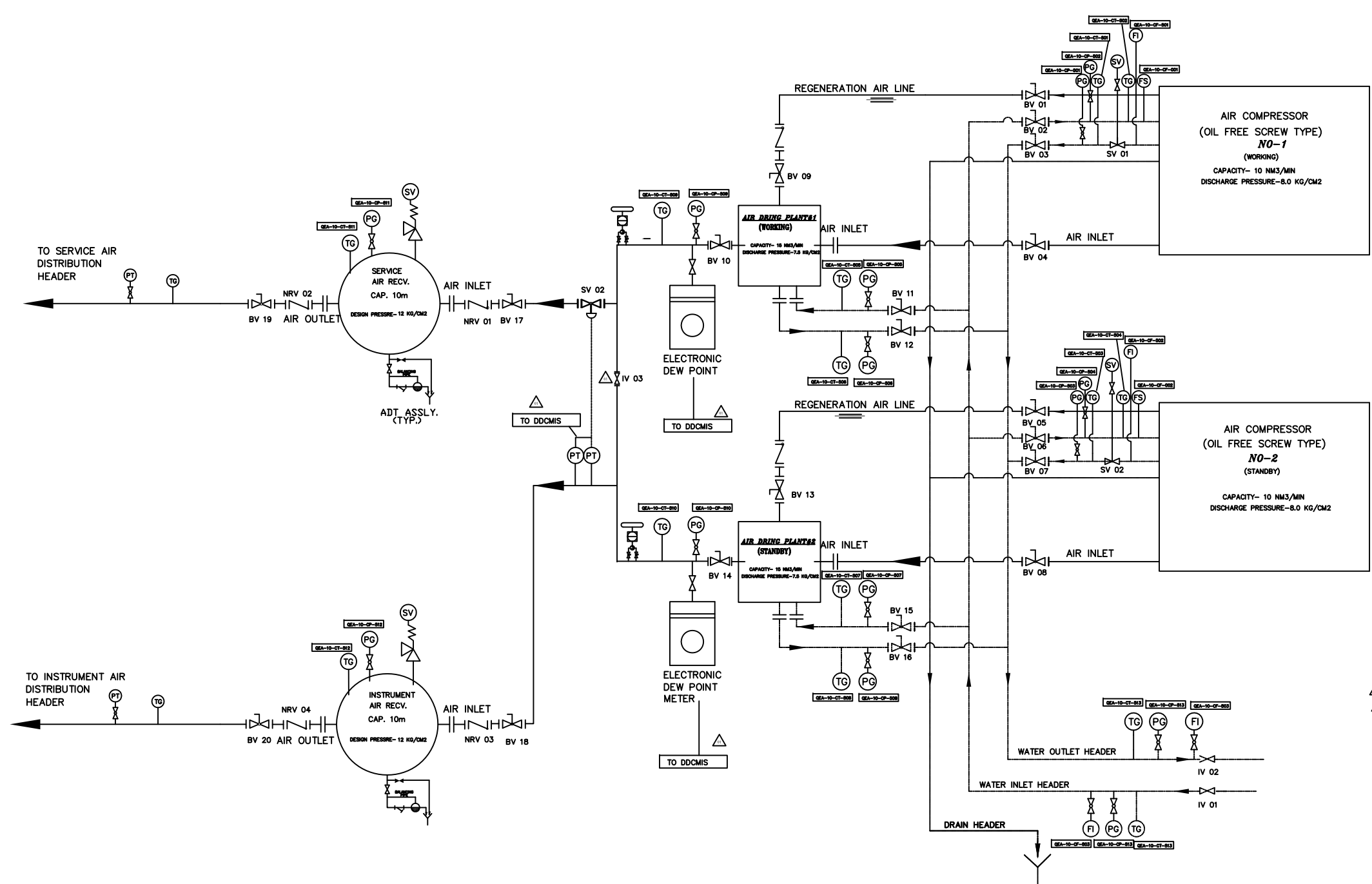
The following modifications with respect to Technical Specification compressed air system BHEL's Technical specification no **PE-TS-409-555-A001** shall apply.

Bidder to note that existing clauses/details as appearing in the specification stands deleted and clauses/details as mentioned in "Modified to or Read as" column shall be applicable and complied by the bidder.

**MODIFIED CLAUSES/PAGE NUMBERS.**

SI no.	Vol. No.	Section/ Description	Clause	Page no	Existing clause/details	Modified to or Read as
1.	IIB	SECTION-C1B	3.1.8	22 of 228	All instruments including the electronic on line dew point meter with suitable sampling connection.	All instruments including the electronic on line dew point meter with suitable sampling connection & isolation valves at common outlet of ADP.
2.	IIB	SECTION-C1B	3.2.1.7	23 of 228	Noise level shall not exceed 85 dBA plus tolerances when measured at a distance of 1.5 meter above the floor and 1 meter from the equipment in free field condition.	Noise level shall not exceed 85 dBA plus tolerances when measured at a distance of 1.5 meter above the floor and 1 meter from the equipment in free field condition. Required acoustic enclosures may be provided .The discharge blow off silencer and intake silencer shall be designed to meet the required limit for noise level.
3.	III	SECTION 1		200 of 228	List of commissioning spares (Volume II Annexure-XII)	List of commissioning spares -(Volume II Annexure-XI)
4.	III	INDEX	DRAWINGS	3 of 228	P & I diagram of compressed air System with ref type air drier	P & I diagram of compressed air system with HOC type air drier Alternative I & Alternative II.
5.	III	SECTIONS-8	DRAWINGS	222 of 228,	P & I diagram of compressed air system air drier.	One Pressure Transmitter , Pressure Gauge and Temperature gauge and Temperature element to be provided after receiver to instrument air distribution header and to be communicated to DCS. Flow meter/gauge shall be provided at the air dryer outlet header.

LEGEND			
	BALL VALVE (OPEN)		TEMP. GAUGE
	BAL VALVE (CLOSED)		NON RETURN VALVE
	ISOLATION VALVE		WATER
	GLOBE VALVE (OPEN)		AIR
	CONTROL VALVE		DRAIN
	RELIEF/SAFETY VALVE		'Y' TYPE FUNNEL
	PRESSURE GAUGE		FLOW SWITCH
	FLOW INDICATOR		PRESSURE TRANSMITTER
	SOLENOID VALVE		HOT AIR
	ADT ASSLY. AUTO DRAIN TRAP ASSEMBLY		VORTEX TYPE FLOW TRANSMITTER



- NOTES:-
1. THE GIVEN P&I IS CONFINED TO INSTRUMENTS AND PIPING FOR COMPRESSOR HOUSE AREA ONLY.
  2. ALL INTERCONNECTING COMPRESSED AIR PIPING SHALL CONFORM TO IS:1239 (HEAVY GRADE) OR IS:3589 Gr.410 AND GALVANISED AS PER IS:4736.
  3. ALL COOLING WATER PIPING WILL BE CONFORMING TO IS:1239 (PART-I, HEAVY GRADE).
  4. FITTINGS FOR AIR PIPING SHALL BE CONFORMING TO RELEVANT BIS STANDARD AND GRADE EQUIVALENT THAT OF PARENT PIPE GRADE.
  5. COMPRESSED AIR PIPING HANDLING HOT AIR WILL BE SUITABLY INSULATED SO AS TO RESTRICT SURFACE TEMPERATURE TO 60 deg C.
  6. DRAIN PIPING UP TO THE NEAREST DRAIN POINT WITHIN THE AIR COMPRESSOR ROOM SHALL BE PROVIDED.
  7. COMPRESSOR SHALL BE DESIGNED FOR A TEMP OF 45 DEG C.
  8. RECEIVER SHALL BE DESIGNED FOR A TEMP OF 50 DEG C.

ALTERNATIVE - I

JOB NO. <b>409</b>		OWNER: KARNATAKA POWER CORPORATION LIMITED 1x370 MW YELAHANKA COMBINED CYCLE POWER PLANT					
STATUS <b>CONTRACT</b>		DESIGNER: FICHTNER					
DISTRIBUTION		OWNER CONSULTANT: FICHTNER Consulting Engineers (India) Private Limited, Chennai, Bangalore.					
		EPC CONTRACTOR: BHARAT HEAVY ELECTRICALS LTD POWER SECTOR PROJECT ENGINEERING MANAGEMENT NEW DELHI					
REV.	DATE	ALTD	CHD	APPD	BY	CHK	DATE
M							
TITLE: <b>P &amp; I DIAGRAM FOR IA &amp; SA SYSTEM (WITH ROTARY HOC AIR DRYER)</b>				DEPT. SCALE: 1:2000			
				DRAWING NO. <b>PE-DG-409-555-A501</b>			
				SHEET 1 OF 2			

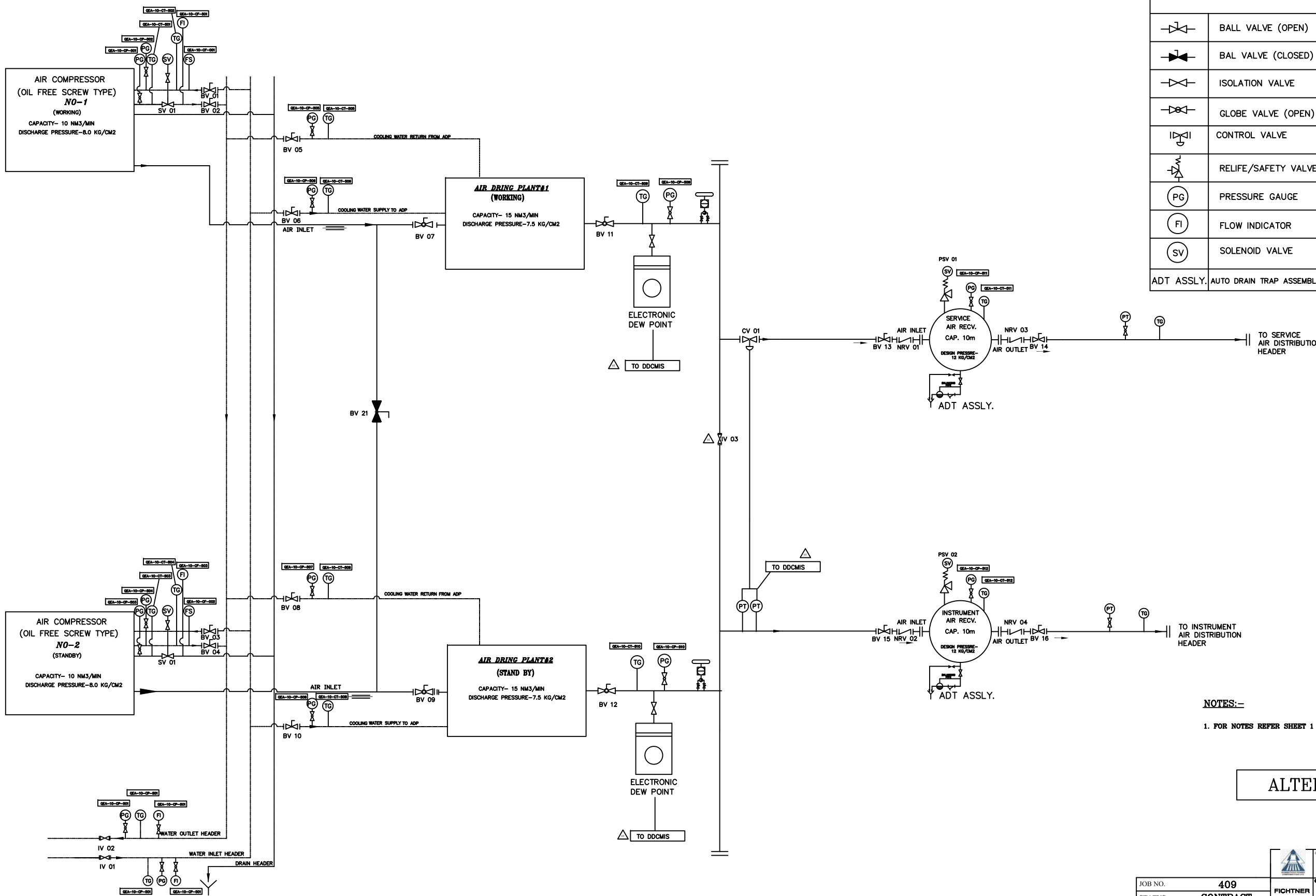
PRODUCED BY AN AUTODESK EDUCATIONAL PRODUCT

PRODUCED BY AN AUTODESK EDUCATIONAL PRODUCT

FILE: C:\ac\compressed\mycustomer\DY\Comp\compressor\alternative1

COPY RIGHT AND CONFIDENTIAL  
The information on this document is the property of BHARAT HEAVY ELECTRICALS LIMITED  
It must not be used directly or indirectly in any way detrimental to the interest of the company.

L E G E N D			
	BALL VALVE (OPEN)		TEMP. GAUGE
	BAL VALVE (CLOSED)		NON RETURN VALVE
	ISOLATION VALVE		WATER
	GLOBE VALVE (OPEN)		AIR
	CONTROL VALVE		DRAIN
	RELIEF/SAFETY VALVE		'Y' TYPE FUNNEL
	PRESSURE GAUGE		FLOW SWITCH
	FLOW INDICATOR		PRESSURE TRANSMITTER
	SOLENOID VALVE		HOT AIR
	ADT ASSLY. AUTO DRAIN TRAP ASSEMBLY		VORTEX TYPE FLOW TRANSMITTER



NOTES:-  
 1. FOR NOTES REFER SHEET 1 OF 2 OF THE SAME DRG.(PE-DG-409-555-A501).

ALTERNATIVE - II

JOB NO. 409		OWNER: KARNATAKA POWER CORPORATION LIMITED 13370 MW YELAHANKA COMBINED CYCLE POWER PLANT	
STATUS CONTRACT		PROJECT CONTRACTOR: FICHTNER Consulting Engineers (India) Private Limited, Chennai, Bangalore.	
DISTRIBUTION		EPC CONTRACTOR: BHARAT HEAVY ELECTRICALS LTD POWER SECTOR ENGINEERING MANAGEMENT NEW DELHI	
REV.	DATE	ALTD	CHD
APPD			
TITLE: P & I DIAGRAM FOR IA & SA SYSTEM (WITH CONVENTIONAL HOC AIR DRYER)		DEPT. DESIGNED BY: DATE: 2010/10/14	
DRAWING NO. PE-DG-409-555-A501		SCALE: 1:5000	
SHEET 2 OF 2		DATE: 2010/10/14	

PRODUCED BY AN AUTODESK EDUCATIONAL PRODUCT

PRODUCED BY AN AUTODESK EDUCATIONAL PRODUCT