

PQR FOR SUPPLY OF LOAD CELL & DIGITAL LOAD INDICATOR

SL. NO.	GENERAL PQR FOR ALL QUOTED ITEMS	REQUIREMENT	VENDORS COMMENT
1	LOAD CELL & DIGITAL LOAD INDICATOR	VENDOR SHOULD BE ORIGINAL EQUIPMENT MANUFACTURER (OEM) OR AUTHORISED DEALER	FOR OEM- DETAILS OF WEBSITE, Excise/VAT/CST REGISTRATION CERTIFICATE FOR DEALER- AUTHORISED DEALER CERTIFICATE WITH VALIDITY, Excise/VAT/CST REGISTRATION CERTIFICATE
2	LOAD CELL	ONLY THOSE VENDORS SHOULD QUOTE WHO HAVE SUCCESSFULLY SUPPLIED LOAD CELL OF CAPACITY 20 TON OR MORE WITHIN LAST 03 YEARS & THE SAME IS WORKING SATISFACTORILY FOR THE PAST 01 YEAR AFTER COMMISSIONING .	PURCHASE ORDER COPIES OF REPUTED CUSTOMERS
3	DIGITAL LOAD INDICATOR	ONLY THOSE VENDORS SHOULD QUOTE WHO HAVE SUCCESSFULLY SUPPLIED DIGITAL LOAD INDICATOR WITHIN LAST 03 YEARS & THE SAME IS WORKING SATISFACTORILY FOR THE PAST 01 YEAR AFTER COMMISSIONING	PURCHASE ORDER COPIES OF REPUTED CUSTOMERS

(Signature)
29/1/21

अमित कुमार / Amit Kumar
ब० अभियन्ता (घो.एच. वि०) Sr. Engineer (P&D)
भारत हेवी इलेक्ट्रिकल्स लि०
Bharat Heavy Electricals Ltd.
हर्ष, वाराणसी/HERP, Varanasi

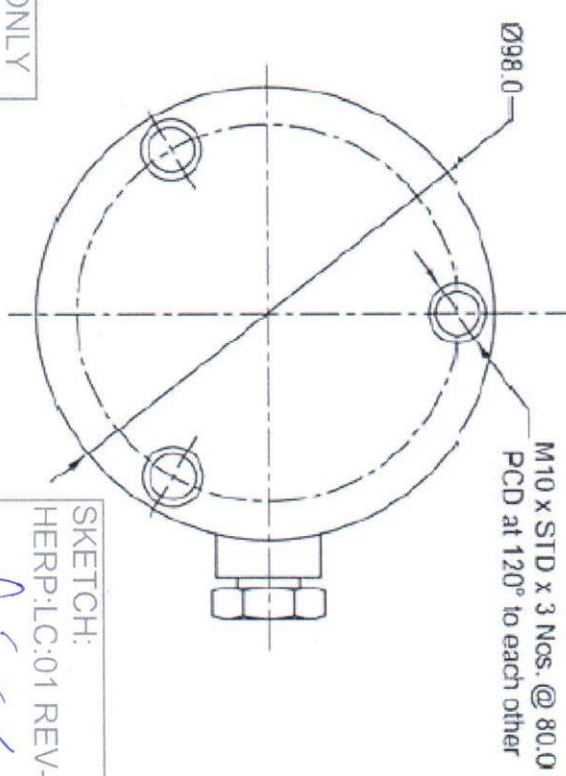
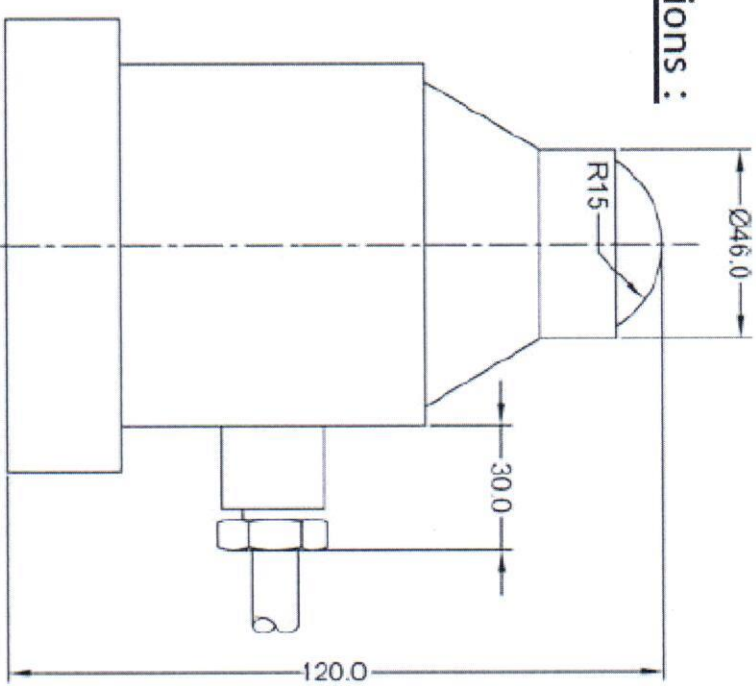
(Signature)
29/1/21

सुनील कुमार तिवारी / Sunil Kumar Tiwari
प्रबन्धक योजना एवं विकास / Manager P&D
श्री. एच. ई. एल. हर्ष, वाराणसी
Bharat Heavy Electricals Ltd.
हर्ष, वाराणसी/HERP, Varanasi

TECHNICAL SPECIFICATIONS

Rated Capacity	20 TON
Output Sensitivity	1 mV/V \pm 0.5 %
Input Resistance	350 \pm 20 Ohms
Output Resistance	350 \pm 10 Ohms
Excitation Voltage	10 to 15 Volts DC
Non Linearity	\pm 0.2 %
Hysteresis	\pm 0.1 %
Creep	0.05 %
Non Repeatability	\pm 0.1 %
Zero Balance	\pm 5 % of Rated Output
Compensated Temp. Range	5 °C to 55 °C
Temp. effect on Zero	\pm 0.01 %/°C Rated Output
Temp. effect on Output	\pm 0.01 %/°C Rated Output
Safe Over Load	150 % of Rated Load
Ultimate Over Load	200 % of Rated Load
Insulation Resistance	500 Meg Ohms at 25 °C
Max. side Load Allowed	1 % of Rated Load
Protection Class	IP - 66

Dimensions :



FOR REFERENCE ONLY

SKETCH:
HERP:LC:01 REV-00

Handwritten signature and date: 29/10/15

Technical Specifications

FOR REFERENCE ONLY

LOAD INDICATOR:HERP:01/00

Handwritten signature and date:
A. S. J. / 29/12/11

CPU	High speed microcontroller
Display	2 x 6 digit 0.4" display for weight and RTC, 4 LEDs for Comm/Peak/Alarm
Keypad	4 keys- Menu/Tare/Up/Down keys
Loadcell Input	Max. 6 loadcells of 350 ohm
Pulse Input	Encoder 5v pulse input /Provides 5v DC to sensor
Digital Input/Output	2 digital inputs, 2 digital outputs – potential free- 24v/1Amp
A/D converter	24 bit A/D, 1 in 1,32,000 internal, 1 in 30,000 external
Calibration Parameters	Capacity, Gain, Resolution, units - easy configuration by user through keypad
Trouble-shooting	Self-diagnostics built in. Initiated through meny command
RTC	Built in real time clock
Host Communication (PC)	USB PORT
Power	90v - 260v AC input, 50 Hz \pm 2%, 25 W
Dimension	Table-top model : 140mm (W) x 70mm (H)x180mm (D) Panel cutout : 137mm (W)x 68.5mm (H)
Enclosure	Aluminium die-casting