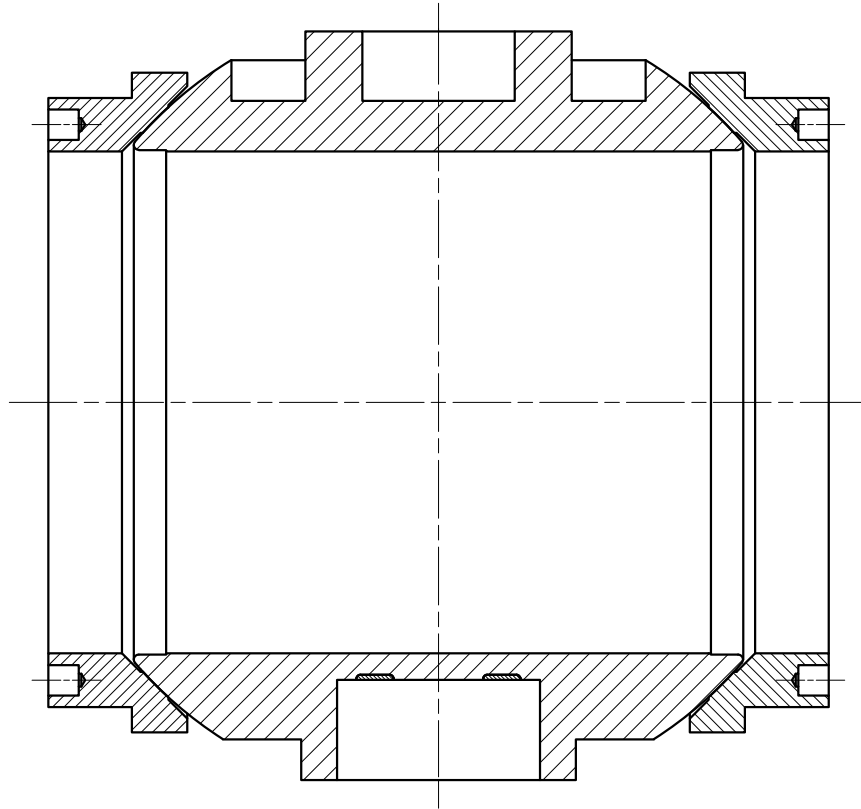


3-V-BA01-25318

DRAWING NO.




| ITEM NO. | MATERIAL DESCRIPTION  | DRAWING     | MATERIAL SPECIFICATION | WEIGHT (Kg) | QTY (NOS.) |
|----------|-----------------------|-------------|------------------------|-------------|------------|
| 1        | BALL 8"-C300 TRUNNION | 3VBA0125069 | A182-F316              | 5.6         | 1          |
| 2        | SEAT RING             | 3VBA0125067 | A182-F316              | 54.3        | 2          |

NOTE:

1. BALL AND SEAT SHOULD PERFECTLY MATCHED TO AVOID ANY LEAK.

| 01    | -           | -        | -             | -      | -      | 56.1   | -      | 3-V-BA01-25318 | -    |
|-------|-------------|----------|---------------|--------|--------|--------|--------|----------------|------|
| NO OF | DESCRIPTION | MAT CODE | MATERIAL SPEC | WEIGHT | WEIGHT | WEIGHT | WEIGHT | DRAWING NO     | ITEM |
| QTY   |             |          |               | (KG)   | (KG)   | (KG)   | (KG)   |                | NO   |

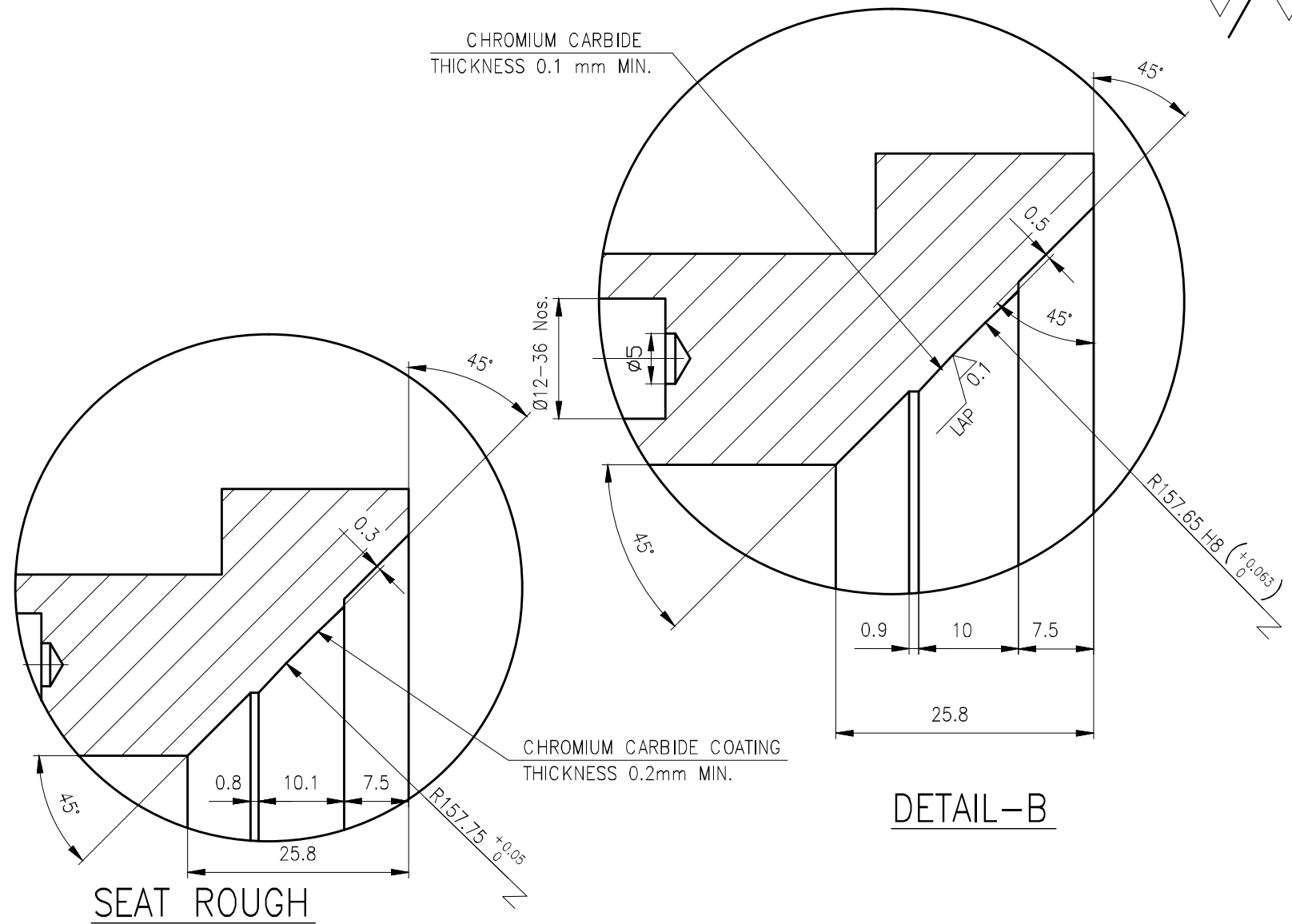
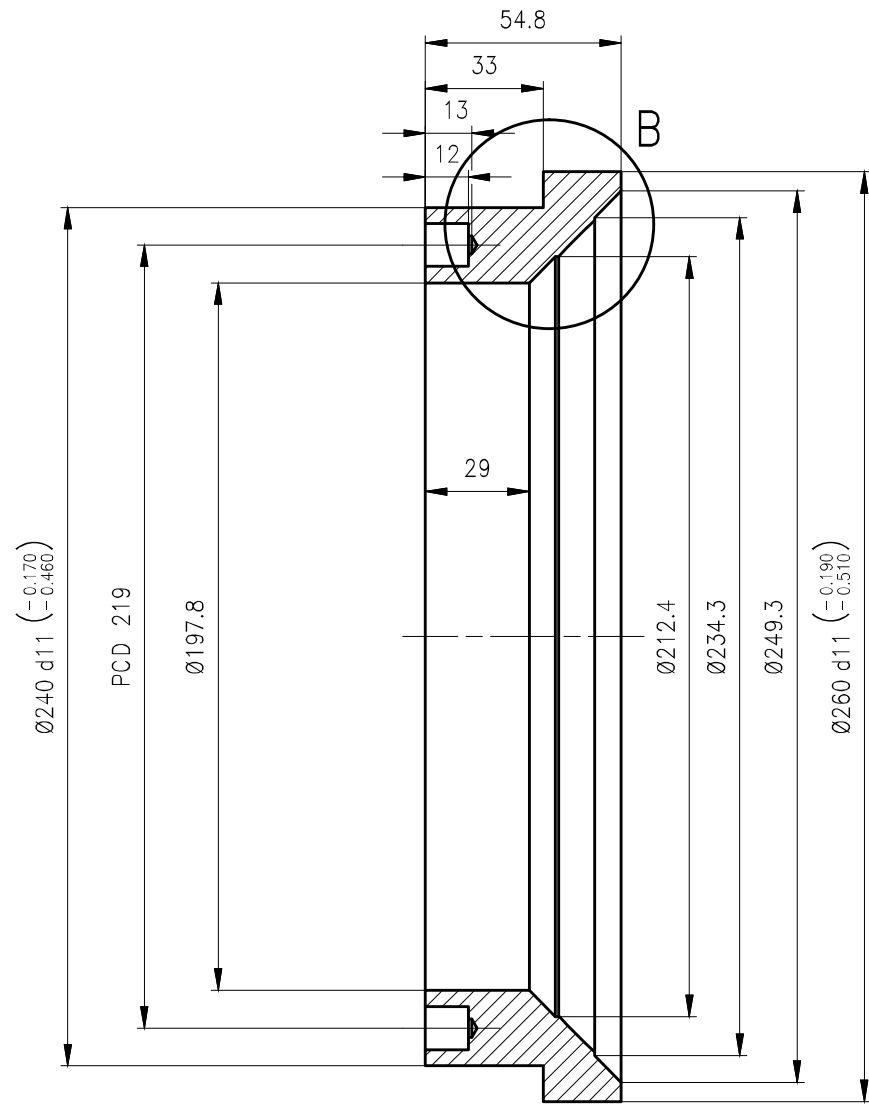
|  |   |        |                  |                             |      |      |        |  |  |
|--|---|--------|------------------|-----------------------------|------|------|--------|--|--|
| CAUTION: The information on this document is the property of BHARAT HEAVY ELECTRICALS LTD. It must not be used directly or indirectly in any way detrimental to the interest of the company. | TYPE OF PRODUCT   |        | BALL VALVE       |                             |      |      |        |  |  |
|  | OR NAME OF  |        | CUSTOMER/PROJECT |                             |      |      |        |  |  |
|  |  BHARAT HEAVY ELECTRICALS LTD.<br>UNIT: HIGH PRESSURE BOILER PLANT,<br>TRUCHIRAPALJI-620014. |        | DRN              | NAME                        | SIGN | DATE | NO. OF |  |  |
|  | 365-121   | GANESH |                  | 01.01.13                    | VAR. |      |        |  |  |
| DEPT   | VL  | SCALE  | WEIGHT (KG)      | REFERENCE INFORMATIONS      |      |      | NO. OF |  |  |
| CODE   | 320   | NTS    | 56.1             | MATL. CODE: 96 465 612 0000 |      |      | ITEMS  |  |  |
| TITLE  |   |        | CARD             | DRAWING NO.                 |      |      | REV    |  |  |
| BALL-SEAT ASSY.<br>(8"-C300)   |   |        | CODE             | 3-V-BA01-25318              |      |      |        |  |  |
|  |   |        | U 01             |                             |      |      |        |  |  |

| REV | DATE | ALTERED    |
|-----|------|------------|
|     |      | CHD & APPD |

3.2 / 0.1

3-V-BA01-25067

DRAWING NO.



NOTES:

- BEFORE LAPPING ALL SHARP EDGES TO BE RADIUSED TO R0.3 MAX.
- CHECK SURFACE FINISH AND LAP FACES IF NECESSARY.
- CONDUCT LPI ON CHROMIUM CARBIDE SURFACE AFTER FINAL MACHINING.
- CHROMIUM CARBIDE COATING THICKNESS 0.2mm MIN. TO BE MAINTAINED.
- CHROMIUM CARBIDE SURFACE HARDNESS 55 HRC MIN.
- COAT: INDOOR RUST PREVENTIVE COAT.

| REV | DATE | ALTERED    |
|-----|------|------------|
|     |      | CHD & APPD |

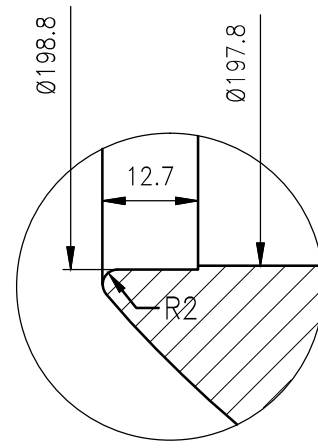
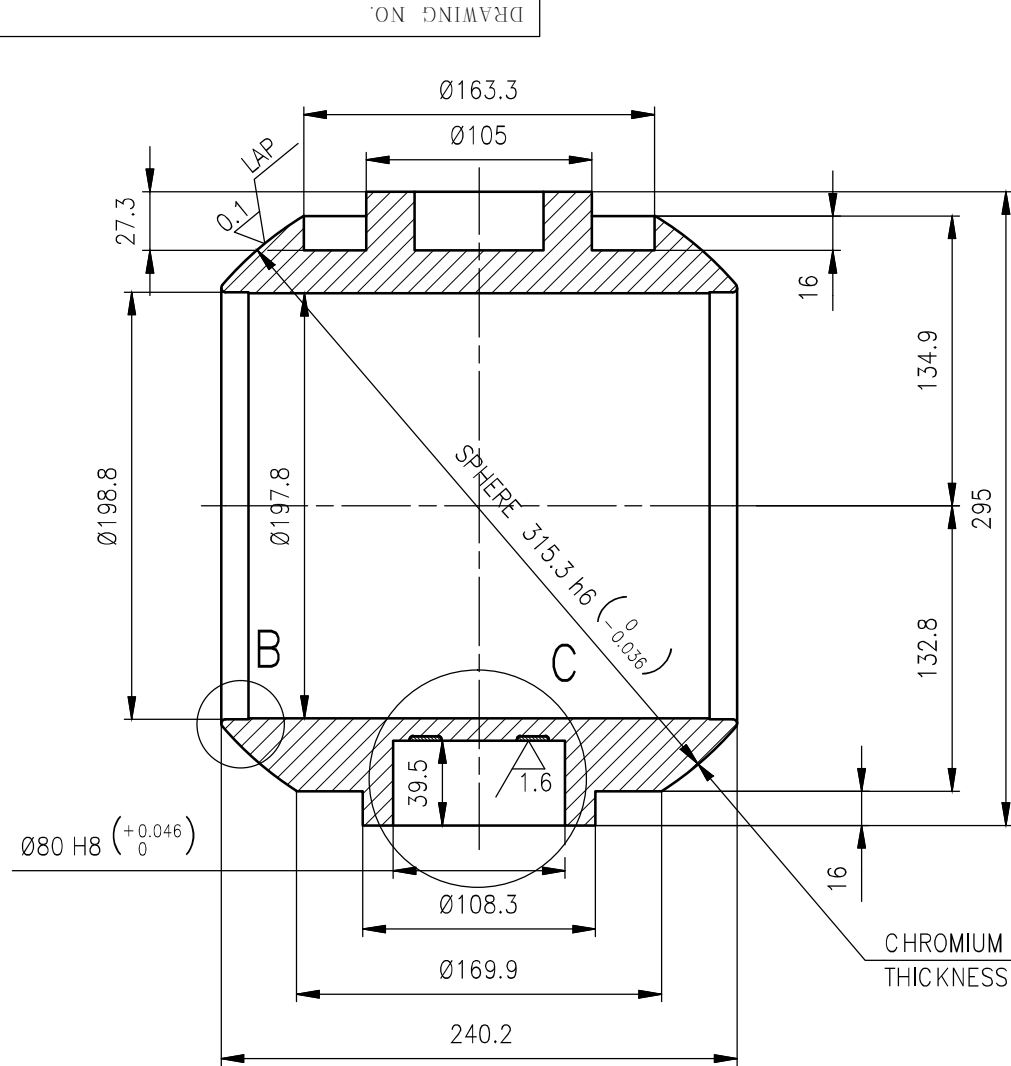
CAUTION: The information on this document is the property of BHARAT HEAVY ELECTRICALS LTD. It must not be used directly or indirectly in any way detrimental to the interest of the company.

| 01  | -           | -          | ASTM A182 F316, PRODUCT ATTEST | SH                        | -             | 5.6            | -             | 3-V-BA01-25067 | 02      |
|---|-------------|------------|--------------------------------|---------------------------|---------------|----------------|---------------|----------------|---------|
| NO. OF  | DESCRIPTION | MATL. CODE | MATL. SPECN                    | TREATMENT                 | SEAT          | NET WT (kg)    | GROSS WT (kg) | DRAWING No     | ITEM No |
| TYPE OF PRODUCT OR NAME OF CUSTOMER/PROJECT   |             |            |                                |                           |               |                |               |                |         |
| <b>BALL VALVE</b>   |             |            |                                |                           |               |                |               |                |         |
| BHARAT HEAVY ELECTRICALS LTD.,<br>UNIT: HIGH PRESSURE BOILER PLANT,<br>TIRUCHIRAPALLI-620014. |             |            |                                | DRN                       | NAME          | SIGN           | DATE          | NO. OF VAR.    |         |
|   |             |            |                                | CHD                       | K.RAJASEKARAN |                | 01.01.13      |                |         |
|   |             |            |                                | APPD                      | SAKETH        |                |               |                |         |
| DEPT  | VL          | SCALE      | WEIGHT (KG).                   | REFERENCE INFORMATION     |               |                |               | NO. OF ITEMS   |         |
| 320   |             | NTS        | 5.6                            | MATL. CODE : 964655470000 |               |                |               |                |         |
| TITLE   |             |            |                                |                           | CARD CODE     | DRAWING NO.    |               |                | REV     |
| SEAT RING (8"-C300)   |             |            |                                |                           | U 01          | 3-V-BA01-25067 |               |                |         |

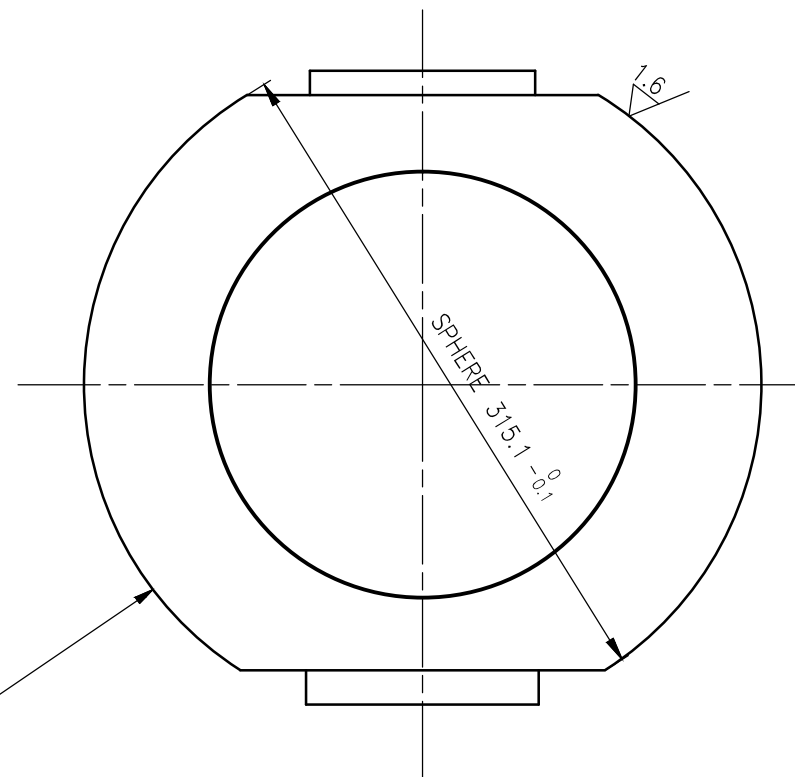
3-V-BA01-25069

DRAWING NO.

3.2 / 1.6 / 0.1



DETAIL-B

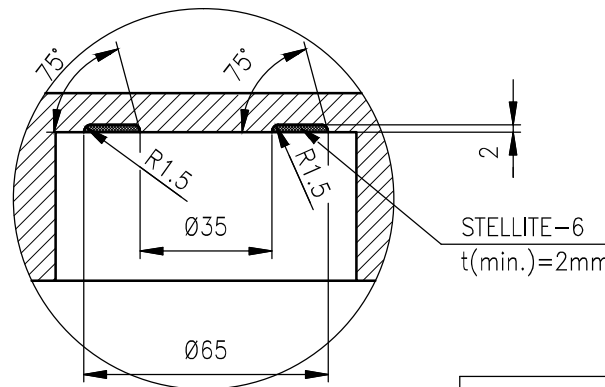
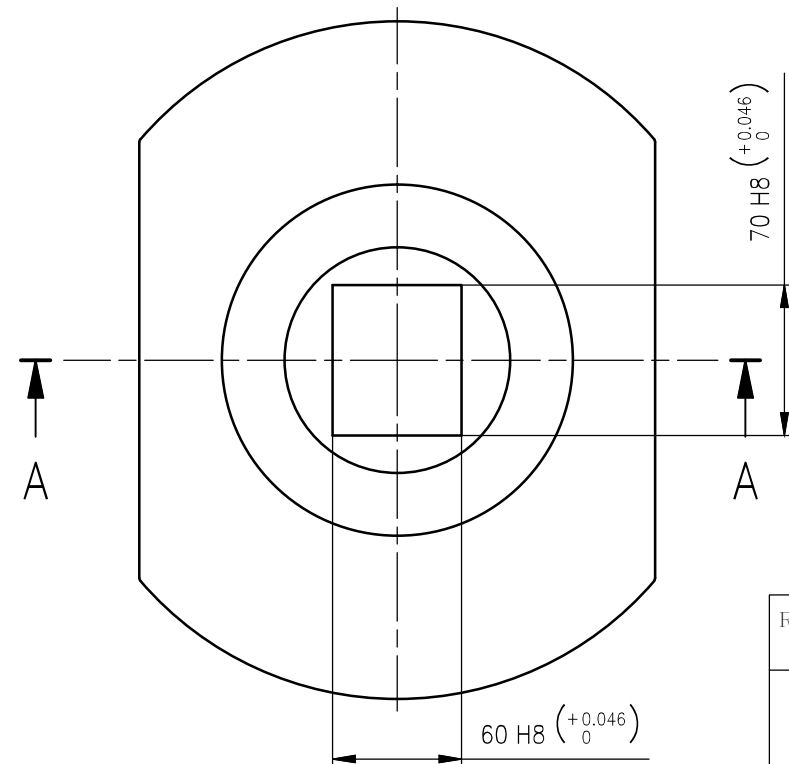


ROUGH MACHINED

CHROMIUM CARBIDE COATING  
THICKNESS 0.2mm MIN.(ENTIRE SURFACE)

CHROMIUM CARBIDE COATING  
THICKNESS 0.1mm MIN.(ENTIRE SURFACE)

SECTION A-A

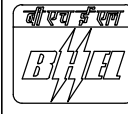


DETAIL-C

NOTES:

1. BEFORE LAPPING ALL SHARP EDGES TO BE RADIUSED TO R0.3 MAX.
2. CHECK SURFACE FINISH AND LAP FACES, IF NECESSARY.
3. CONDUCT LPI ON CHROMIUM CARBIDE SURFACE AFTER FINAL MACHINE.
4. CHROMIUM CARBIDE COATING THICKNESS 0.2mm MIN. TO BE MAINTAINED.
5. CHROMIUM CARBIDE SURFACE HARDNESS 55 HRC MIN.
6. COAT: INDOOR RUST PREVENTIVE COATING.

|           |             |           |                                |                  |               |                   |                     |                |            |
|-----------|-------------|-----------|--------------------------------|------------------|---------------|-------------------|---------------------|----------------|------------|
| 01        | -           | -         | ASTM A182 F316, PRODUCT ATTEST | SH               | -             | 56.1              | -                   | 3-V-BA01-25059 | 04         |
| VO<br>C/F | DESCRIPTION | VAT. CODE | VAT. SPECN                     | HAI<br>TREATMENT | SCRAP<br>SORT | NET<br>WT<br>(KG) | GROSS<br>WT<br>(KG) | DRAWING No     | ITEM<br>No |

|   |     |              |                |                          |          |                |                 |  |  |  |
|---|-----|--------------|----------------|--------------------------|----------|----------------|-----------------|--|--|--|
| TYPE OF PRODUCT<br>OR NAME OF<br>CUSTOMER/PROJECT   |     | BALL VALVE   |                |                          |          |                |                 |  |  |  |
|  BHARAT HEAVY ELECTRICALS LTD.,<br>UNIT: HIGH PRESSURE BOILER PLANT,<br>TIRUCHIRAPALLI-620014. |     | DRN          | NAME           | SIGN                     | DATE     | NO. OF<br>VAR. |                 |  |  |  |
|   |     | CHD          | K.RAJASEKARAN  |                          | 01.01.13 |                |                 |  |  |  |
|   |     | APPD         | SAKETH         |                          |          |                |                 |  |  |  |
| DEPT  | VL  | SCALE        | WEIGHT (KG)    | REFERENCE INFORMATIONS   |          |                | NO. OF<br>ITEMS |  |  |  |
| CODE  | 320 | NTS          | 56.1           | MATL. CODE: 964655460000 |          |                |                 |  |  |  |
| TITLE   |     | CARD<br>CODE | DRAWING NO.    |                          | REV      |                |                 |  |  |  |
| BALL<br>(8"-C300)   |     | U 01         | 3-V-BA01-25069 |                          |          |                |                 |  |  |  |

CAUTION: The information on this document is the property of BHARAT HEAVY ELECTRICALS LTD. It must not be used directly or indirectly in any way detrimental to the interest of the company.

| REV | DATE | ALTERED    |
|-----|------|------------|
|     |      | CHD & APPD |