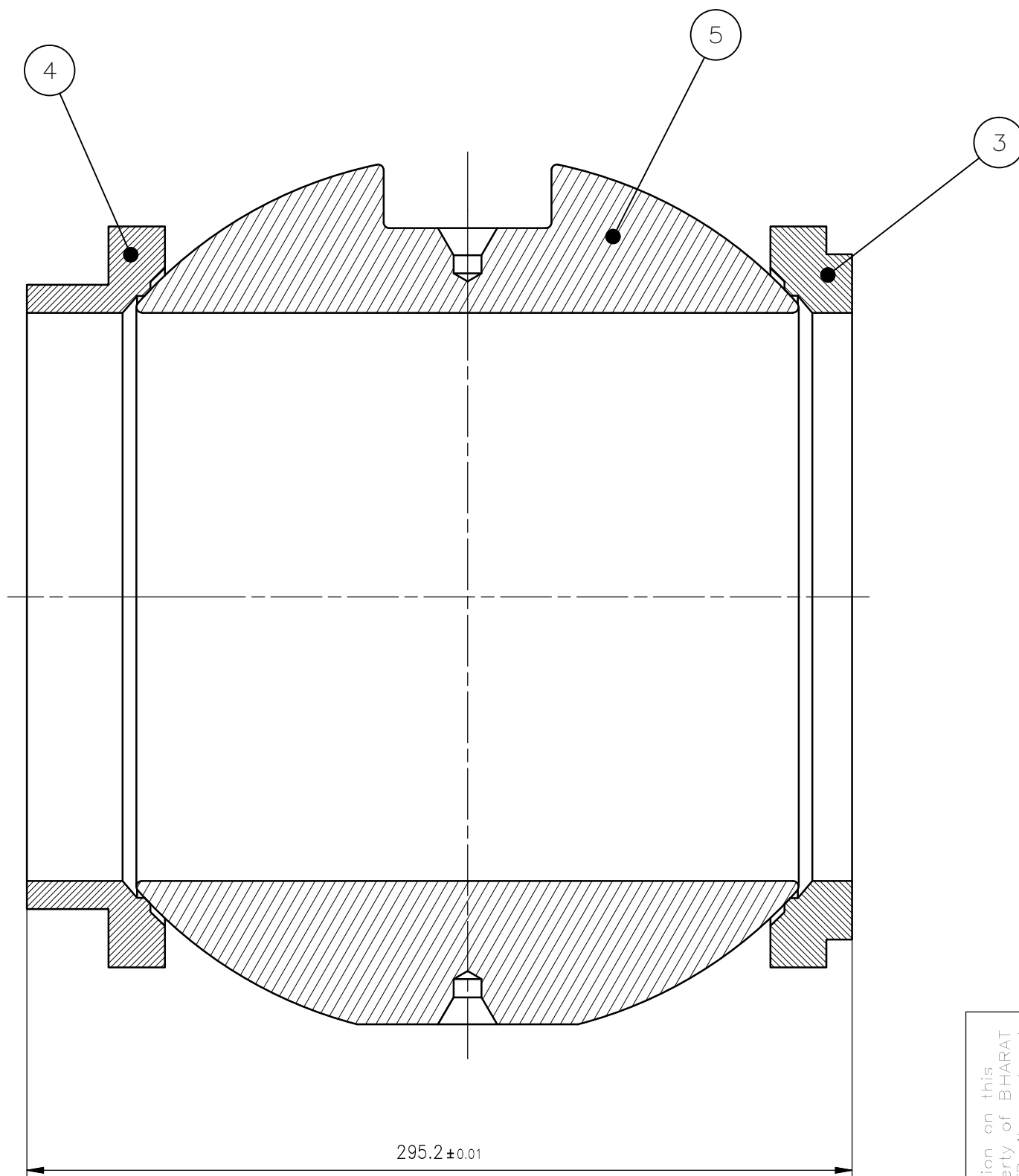


98797-0000-V-3

DRAWING NO.



Sl. No.	Material Description	Drawing	Material Specification	Wt (Kg)	Item No.
1	SEAT RING - DOWNSTREAM	3VBA5125220	A182 - F316	4.1	3
2	SEAT RING - UPSTREAM	3VBA5125219	A182 - F316	4.5	4
3	BALL - 8" - C300 FLOATING	3VBA5125221	A182 - F316	58.1	5

**NOTE :**

1. BALL AND SEAT SHOULD MATE PERFECTLY TO AVOID ANY LEAK.

COMPONENT CODE : 964655840000

1	-	-	-	-	-	67	-	3-V-BA51-25285	-
VC C/F	DESCRIPTION	VATL CODE	VATL SPECN	HPAT TREATMENT	SCRAP SOR	NET WT (KG)	GROSS WT (KG)	DRAWING No	ITEM No

TYPE OF PRODUCT OR NAME OF CUSTOMER/PROJECT **BALL VALVE**

BHARAT HEAVY ELECTRICALS LTD., UNIT: HIGH PRESSURE BOILER PLANT, TIRUCHIRAPALLI-620014.	DRN	NAME	SIGN	DATE	NO. OF VAR.
	CHD	K.RAJASEKARAN		08.08.13	
	APPD	K.SAKETH		08.08.13	

DEPT	VL	SCALE	WEIGHT (KG).	REFERENCE INFORMATION	NO. OF ITEMS
320		NTS	-		

TITLE	CARD CODE	DRAWING NO.	REV
BALL - SEAT ASSY. 8"-C300-FLOATING TYPE	U 01	3-V-0000-25285	00

REV	DATE	ALTERED
		CHD & APPD

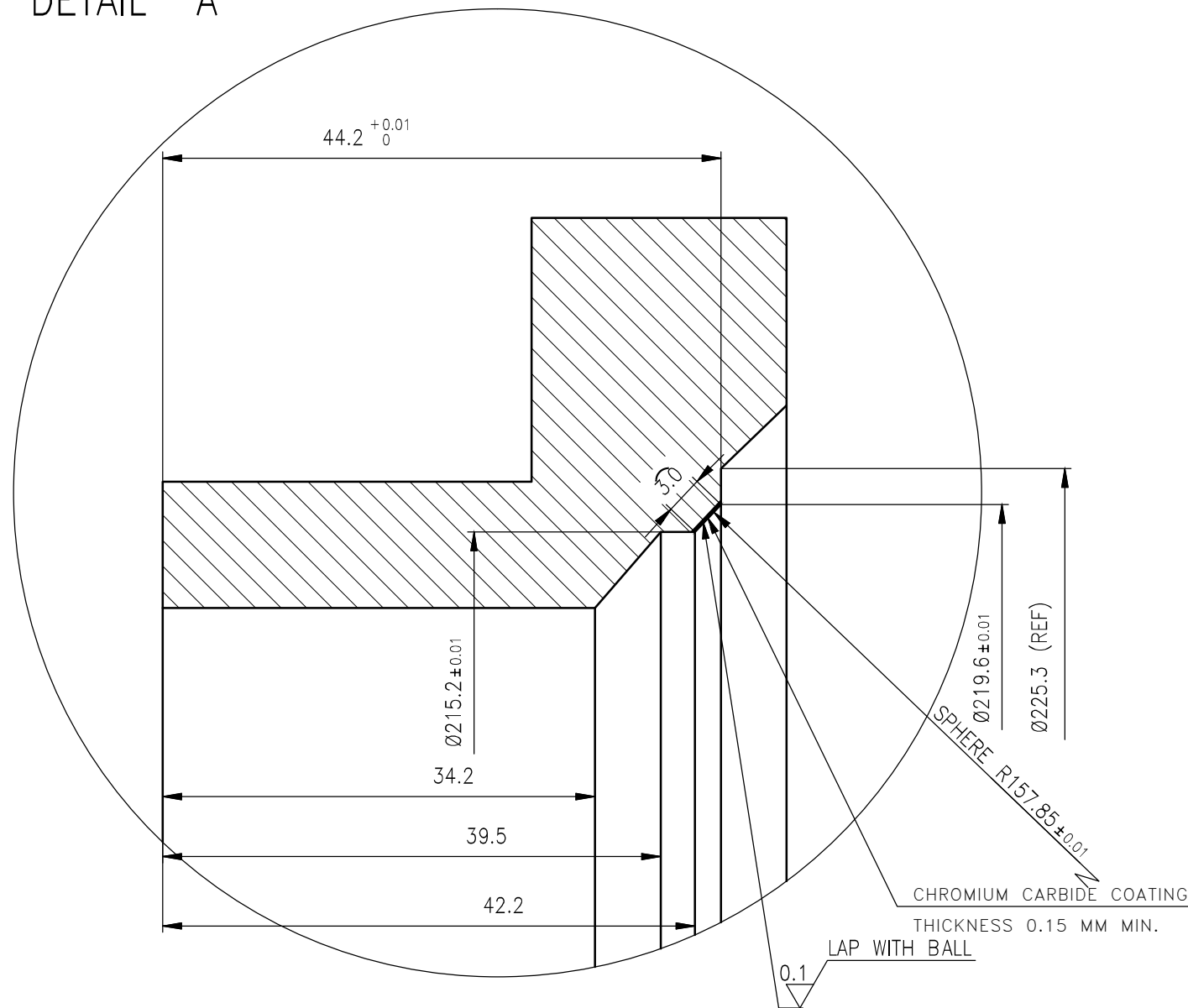
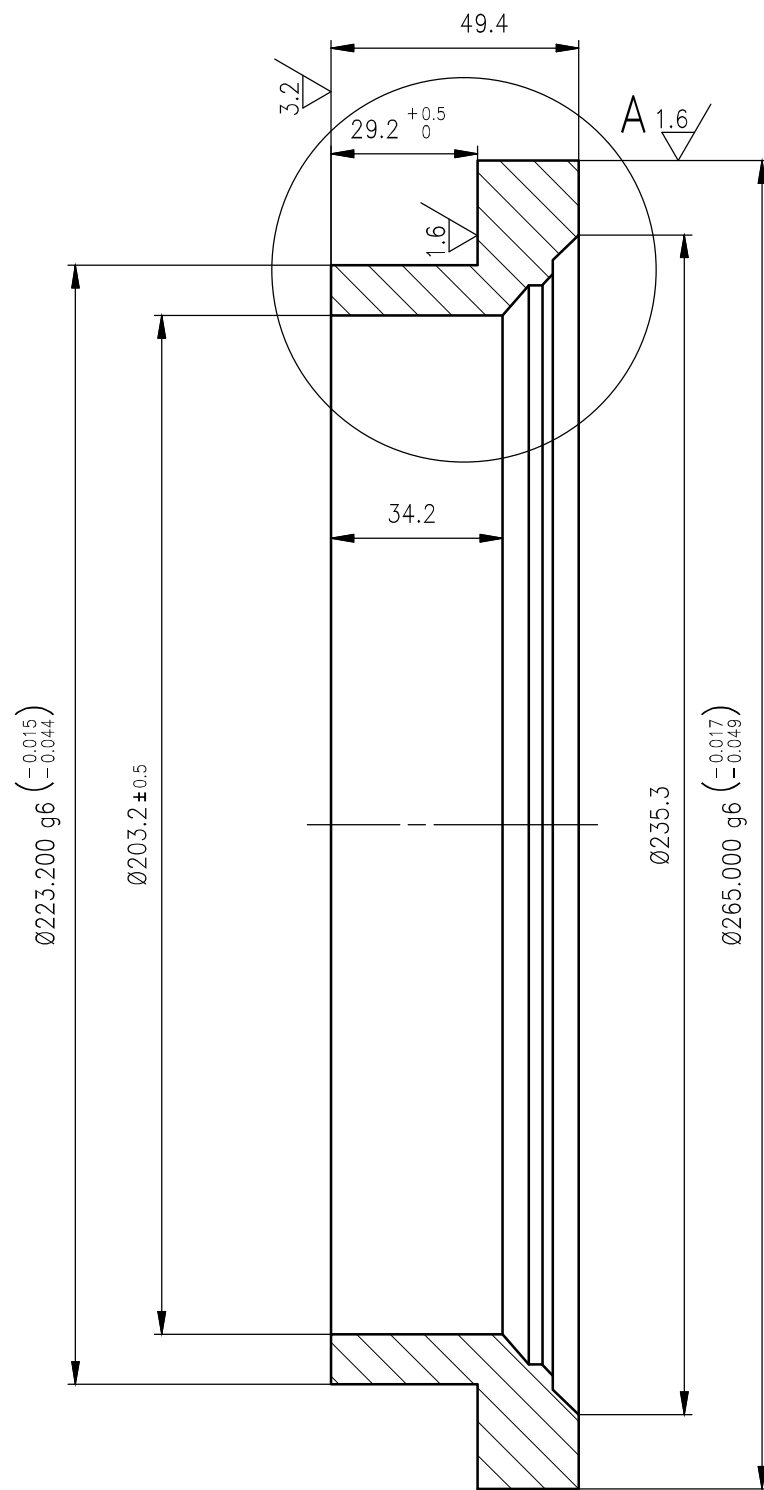
CAUTION: The information on this document is the property of BHARAT HEAVY ELECTRICALS LTD. It must not be used directly or indirectly in any way detrimental to the interest of the company.

61297-0000-V-3

DRAWING NO.

12.5/1.6/3.2

DETAIL A



COMPONENT CODE : 964655440000

01	SUGG. MIN. SIZE Ø275x60	-	A182 F316, CERTIFY	SH	46	4.5	31	3-V-BA51-25219	04
NO OFF	DESCRIPTION	MATL CODE	MATL SPECN	PLA TREATMEN	SCRAP	NET WT (kg)	GROSS WT (kg)	DRAWING NO	REV No

CAUTION: The information on this document is the property of BHARAT HEAVY ELECTRICALS LTD. It must not be used directly or indirectly in any way detrimental to the interest of the company.

TYPE OF PRODUCT OR NAME OF CUSTOMER/PROJECT: **BALL VALVE**

BHARAT HEAVY ELECTRICALS LTD., UNIT: HIGH PRESSURE BOILER PLANT, TIRUCHIRAPALLI-620014. 365-121	DRN	NAME DEEPAKRAJ	SIGN	DATE 11.01.13	NO. OF VAR.
	CHD	K.RAJASEKARAN		11.01.13	
	APPD	K.SAKETH		11.01.13	

REV	DATE	ALTERED
		CHD & APPD

DEPT VL	SCALE NTS	WEIGHT (KG). -	REFERENCE INFORMATION	NO. OF ITEMS
CODE 320				
TITLE SEAT RING - INLET (8"-C300-BALL VALVE - FLOATING TYPE)			CARD CODE U 01	REV 00
			DRAWING NO. 3-V-0000-25219	

NOTES:

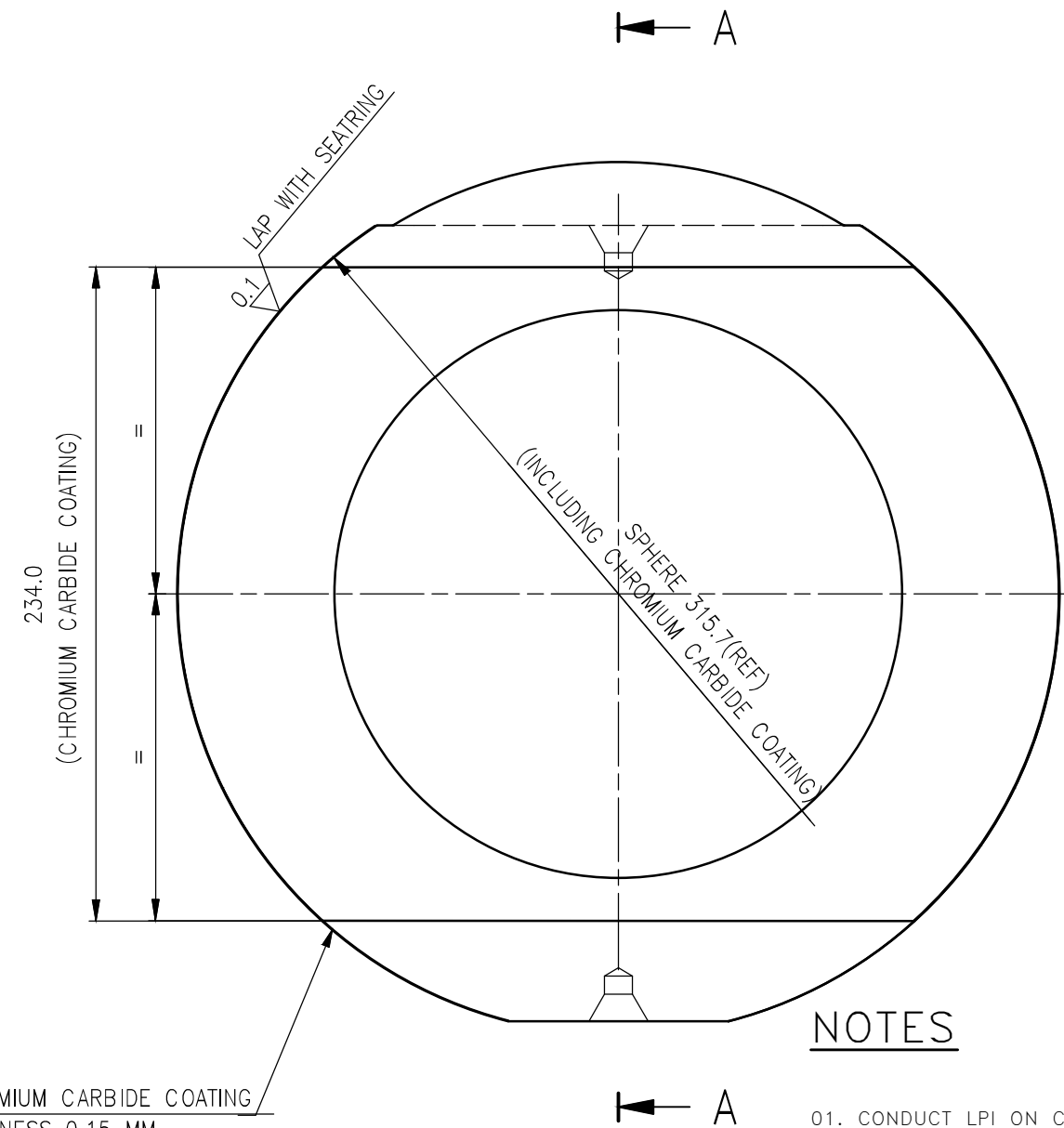
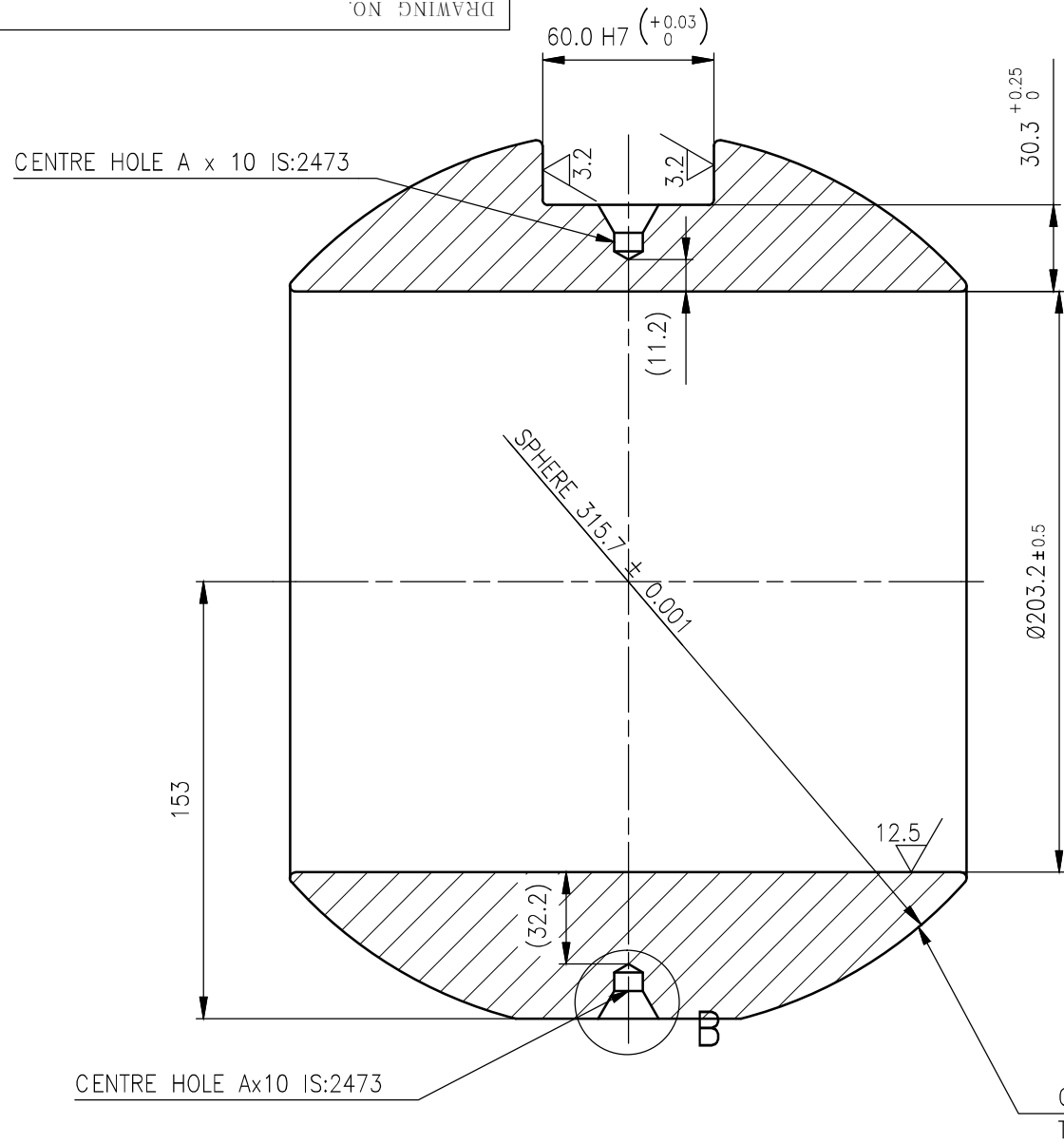
- 01. CONDUCT LPI ON CHROMIUM CARBIDE SURFACE AFTER FINAL MACHINE.
- 02. CHROMIUM CARBIDE SURFACE HARDNESS 55 HRC MIN.



3-V-0000-25221

DRAWING NO.

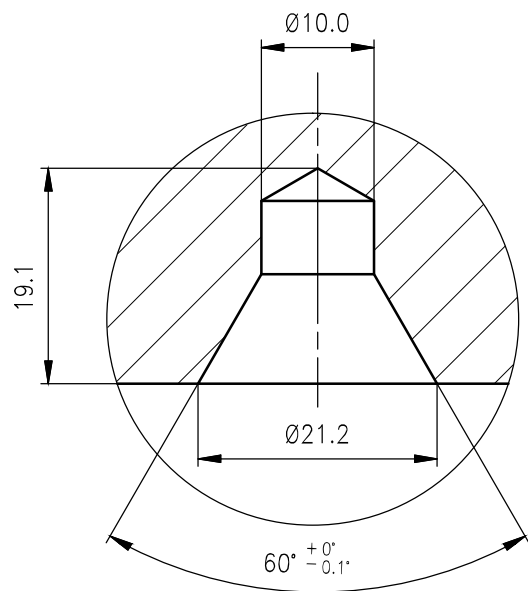
12.5 / 0.1 / 3.2



NOTES

- 01. CONDUCT LPI ON CHROMIUM CARBIDE SURFACE AFTER FINAL MACHINE.
- 02. CHROMIUM CARBIDE SURFACE HARDNESS 55 HRC MIN.

SECTION A-A



DETAIL B

REV	DATE	ALTERED
		CHD & APPD

CAUTION: The information on this document is the property of BHARAT HEAVY ELECTRICALS LTD. It must not be used directly or indirectly in any way detrimental to the interest of the company.

COMPONENT CODE : 964655430000

NO	DESCRIPTION	MATL CODE	MATL SPECN	HFA TREATMENT	SCRAP W (kg)	NET W (kg)	GROSS W (kg)	DRAWING No	ITEM No
01	-	-	ASTM A182 F316, PRODUCT ATTEST	SH	46	58.1	107	3-V-BA51-25221	05

TYPE OF PRODUCT OR NAME OF CUSTOMER/PROJECT		BALL VALVE	
BHARAT HEAVY ELECTRICALS LTD., UNIT: HIGH PRESSURE BOILER PLANT. TIRUCHIRAPALLI-620014.		DRN	DEEPAKRAJ
		CHD	K.RAJASEKARAN
		APPD	K.SAKETH
		DATE	07.01.13
		NO. OF VAR.	
DEPT	VL	SCALE	WEIGHT (KG).
320		NTS	-
TITLE		CARD CODE	REFERENCE INFORMATION
BALL (8"-C300-CF8M)		U 01	-
		DRAWING NO.	NO. OF ITEMS
		3-V-0000-25221	
		REV	
		00	