



BHARAT HEAVY ELECTRICALS LIMITED
 INDUSTRIAL VALVES PLANT
 433, INDUSTRIAL COMPLEX
 GOINDWAL SAHIB
 DISTT. TARN TARAN- PUNJAB – 143422

No.BHE:IVP:
 SC:BSGGP:AD-
 2015-16/02
 Dated
 18.01.2016

NOTICE INVITING APPLICATIONS FOR REGISTRATION OF SUB CONTRACTORS

BHARAT HEAVY ELECTRICALS LIMITED [BHEL] is manufacturing Industrial Valves and other Boiler accessories at its Industrial Valves Plant, Goindwal Sahib unit. Burner Shutoff Gates are new addition to BHEL IVP Goindwal product range and machining vendors are required for machining & plasma cutting of Plates of thickness 10mm to 40mm.

Expression of interest and applications for registration are invited from sub-contractors (including MSE & MSE-SC/ST vendors) for doing the machining job of various components of Burner Shutoff Gate. Major areas for which subcontractors are required are Plano Miller, Planer, conventional set up jobs etc. Vendors who can do Plasma Cutting of plates thickness upto 40 mm preferably in house is also required. App. Annual procurement value for year 2016-17: 12 Lakh.

Machining of Items for which vendors required immediately are:

Burner Shutoff Gate and Girder Pin Connection	Machining Sub Contractors for Burner Shutoff Gate are required to machine various components like Gate Body, Gate Guide, Gate Plate, Gasket Holder and other components. The vendor is required to do complete machining of these components on Plano Millers/Planer/Conventional setup. Also, Plasma Cutting of plates thickness upto 40 mm preferably in house is also required. List of components, where machining vendors are required, is attached herewith as Annexure- I. Sample drawings of some components are also attached.
--	--

BHEL is looking for prospective Sub Contractors for above detailed job work for BHEL.

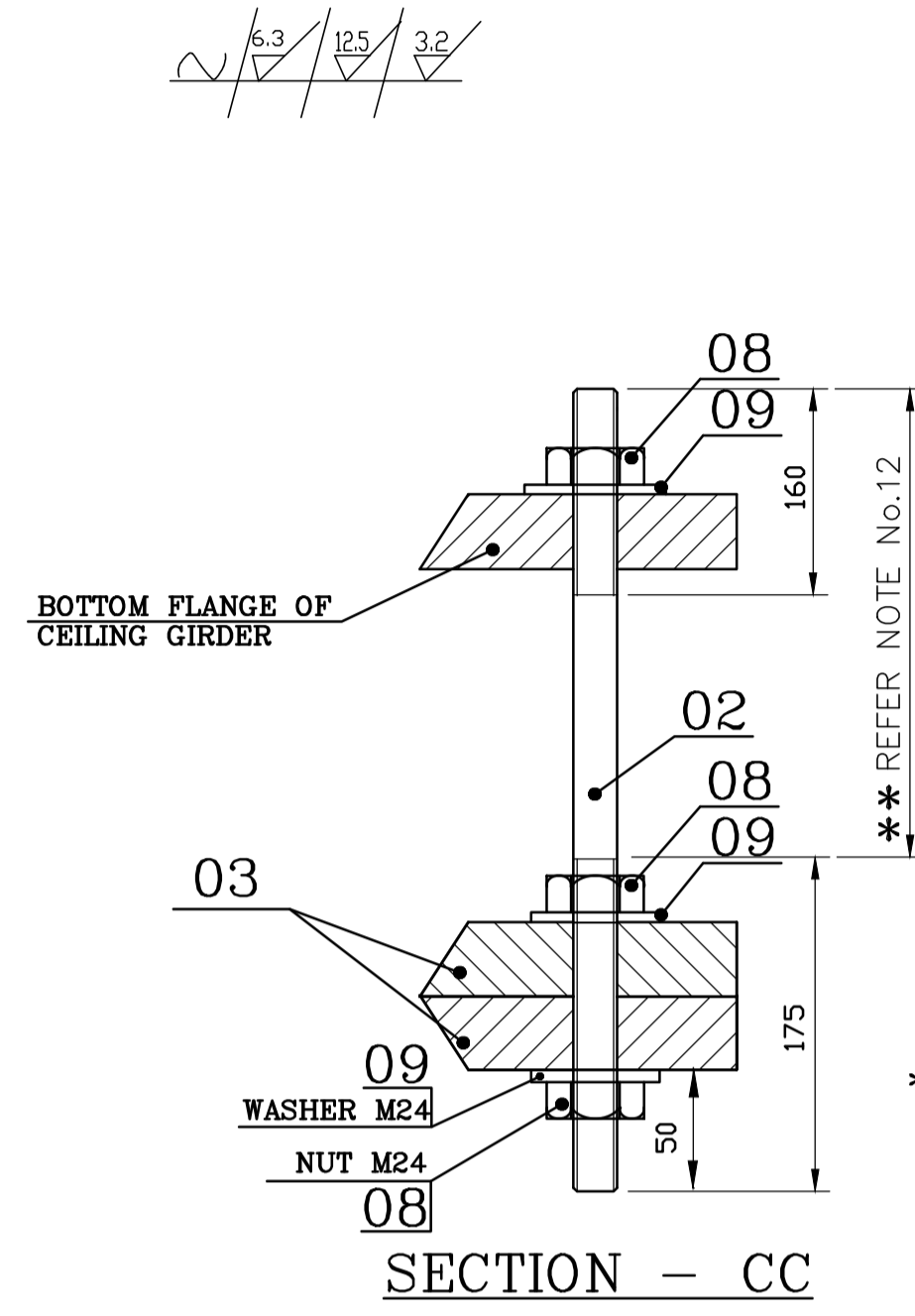
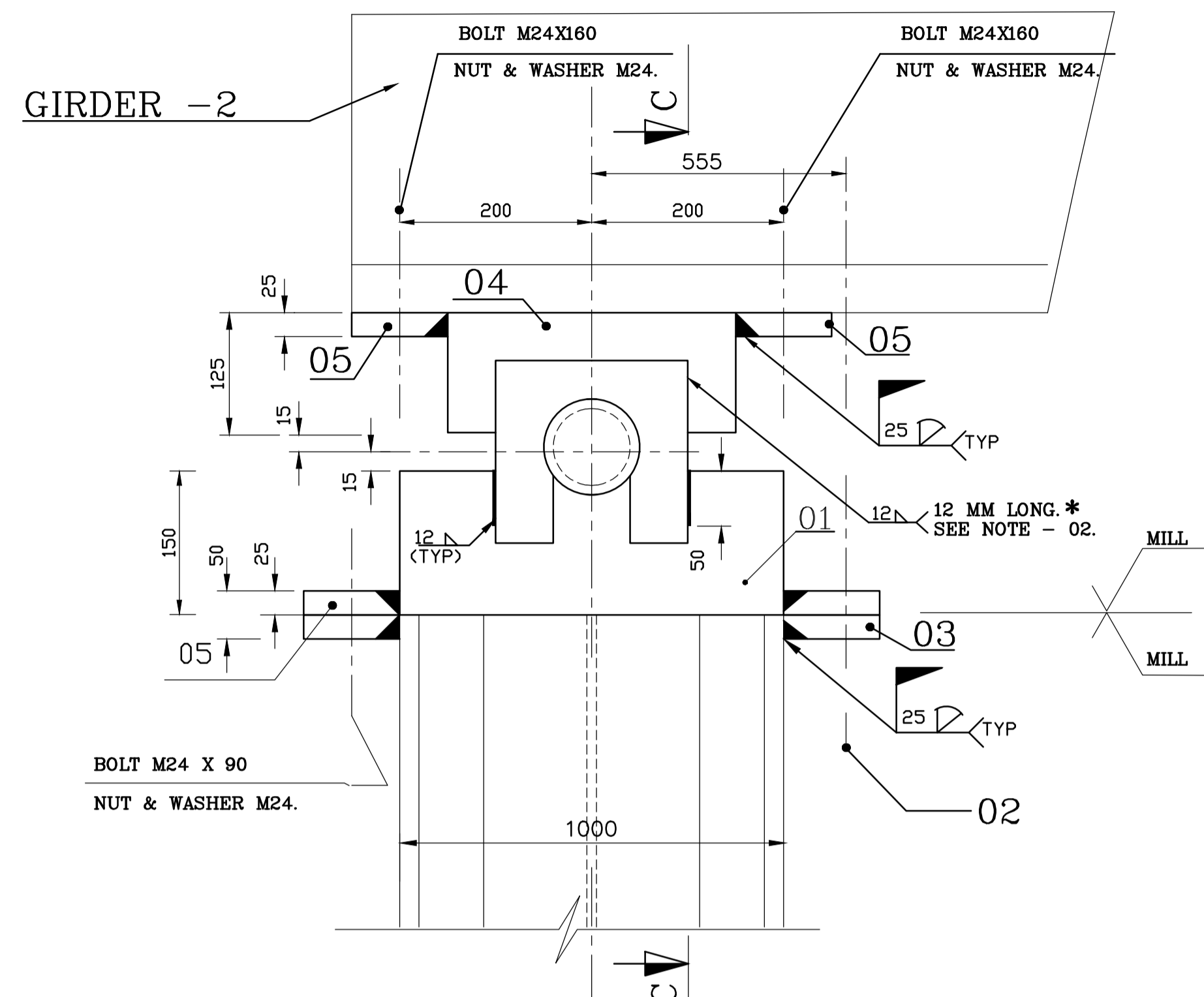
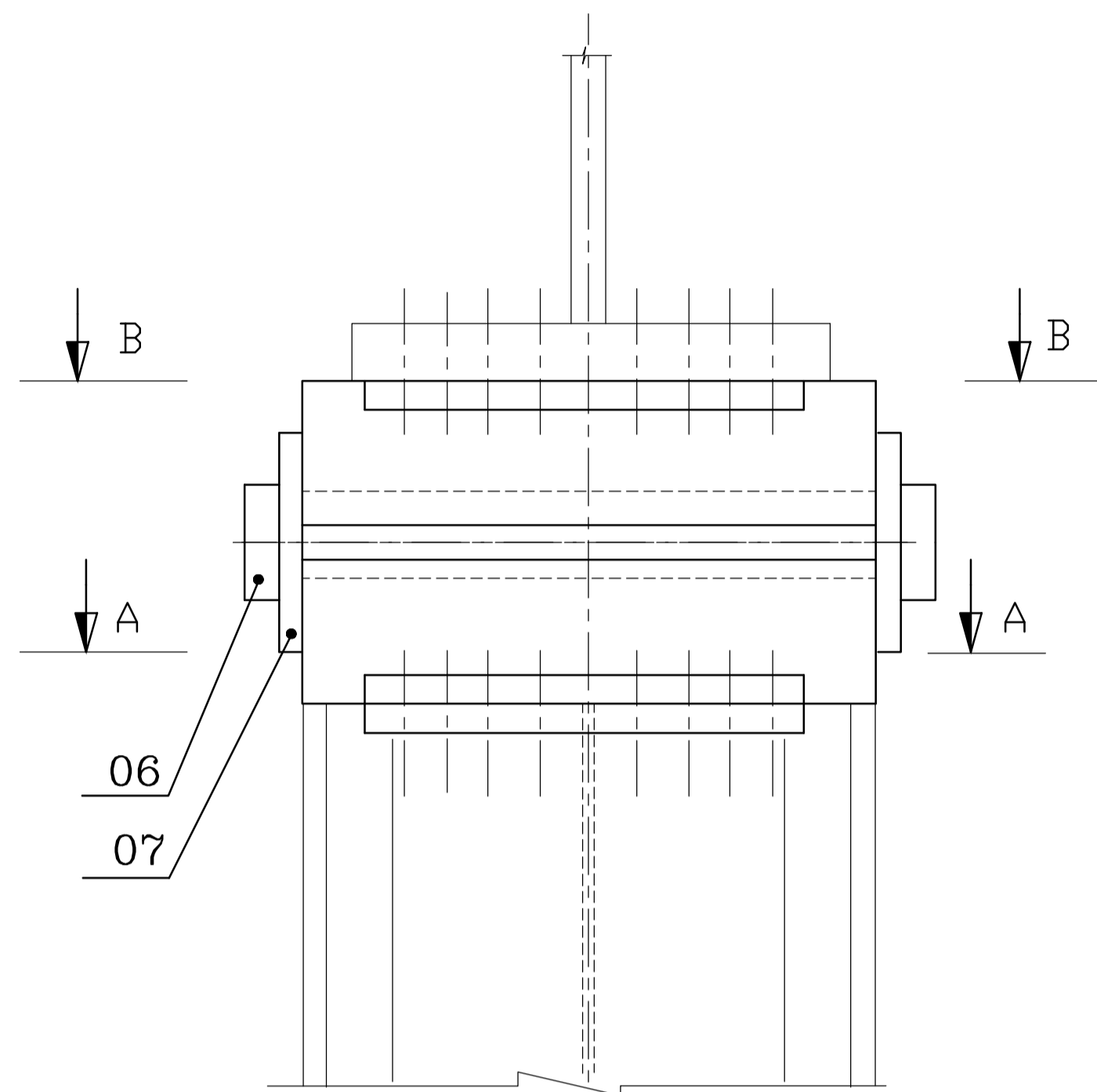
BHEL shall evaluate the vendors as per its established vendor selection, evaluation and registration procedure. Supplier registration form can also be downloaded from our website www.bhel.com available as a downloadable link at [http://www.bhel.com/images/pdf/vendor/Guidelines Indian Suppliers SEARP2010Amdt.02.pdf](http://www.bhel.com/images/pdf/vendor/Guidelines%20Indian%20Suppliers%20SEARP2010Amdt.02.pdf)

BHEL invites such vendors to visit its above located plant on any working day from Monday to Saturday between 0930 Hrs to 1730 Hrs and contact undersigned for any clarification regarding:

Items details and requirement		Vendor registration form/procedure
Sumeet Bansal Dy. Manager (Sub-Contracting)	Gaurav Singh Gangwar Sr. Engineer (Sub-Contracting)	Priksnit Ravesh Sr. Engineer (Sub-Contracting)
Phone: 01859-224647	01859-224643	01859-224654
Mobile: 098780 06105	08427001944	09888062649
E-mail: sb@bhelivp.in	gsg@bhelivp.in	priksnit@bhelivp.in

Fax: 01859-222061

BHARAT HEAVY ELECTRICALS LIMITED
 INDUSTRIAL VALVES PLANT
 433, INDUSTRIAL COMPLEX, GOINDWAL SAHIB, DISTT. TARN TARAN, PUNJAB – 143 422



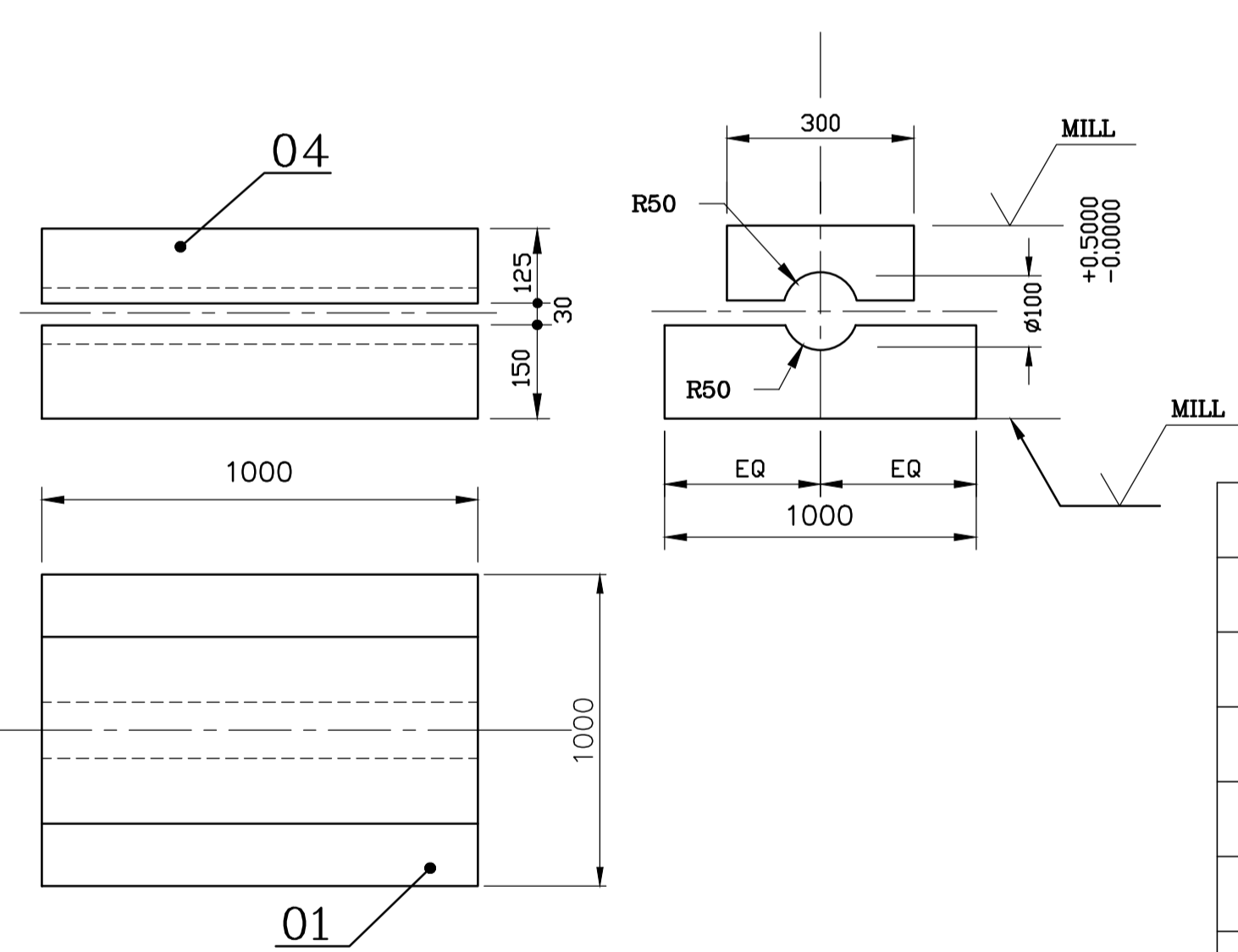
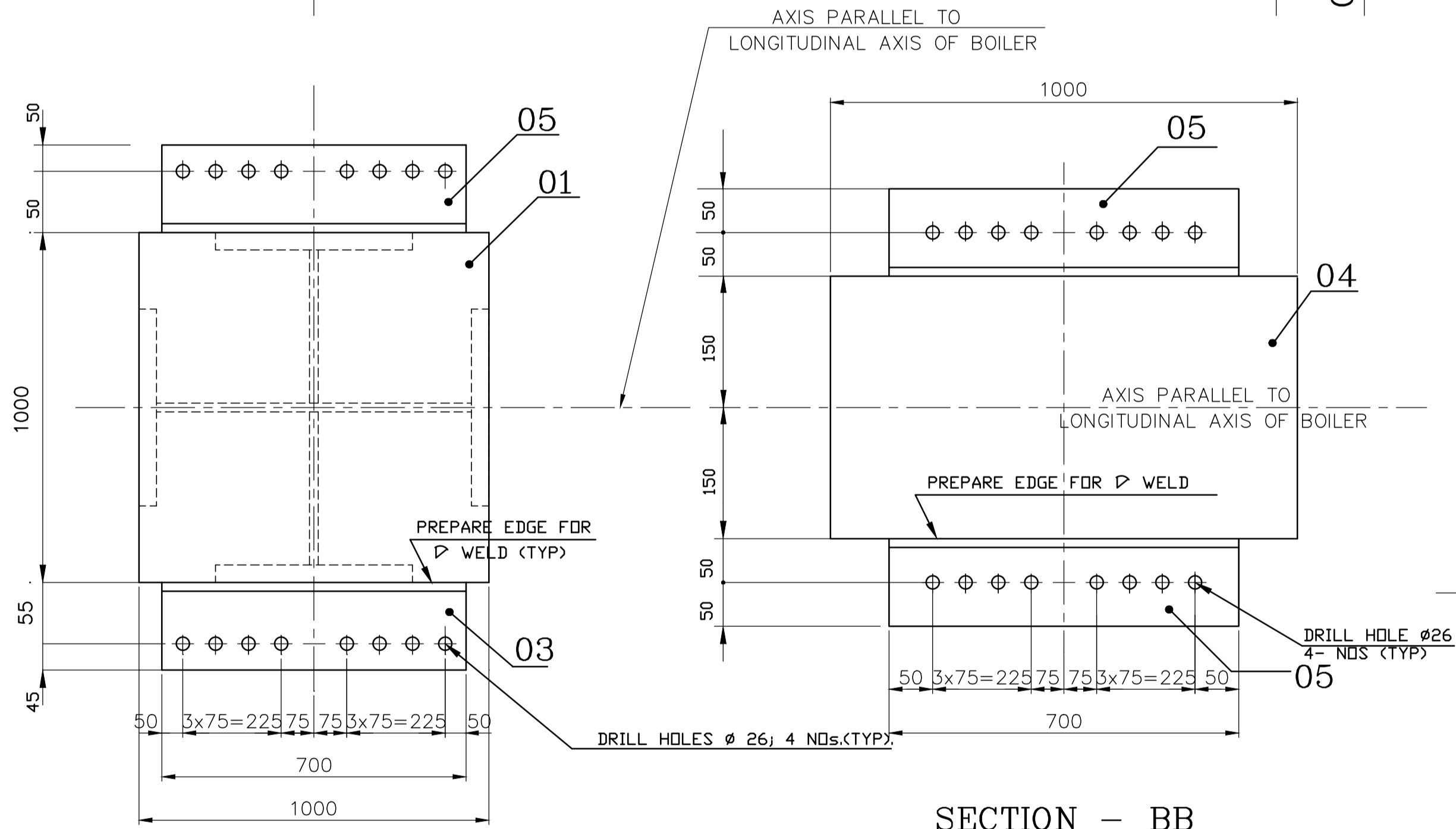
SIZE AND TYPE OF WELD	TYPE OF ELECTRODE	TOTAL LENGTH OF WELDING
12 ∇	E 7018	1.50
25 ∇ ∇	E 7018	10.25

REQUIREMENT OF FASTENERS

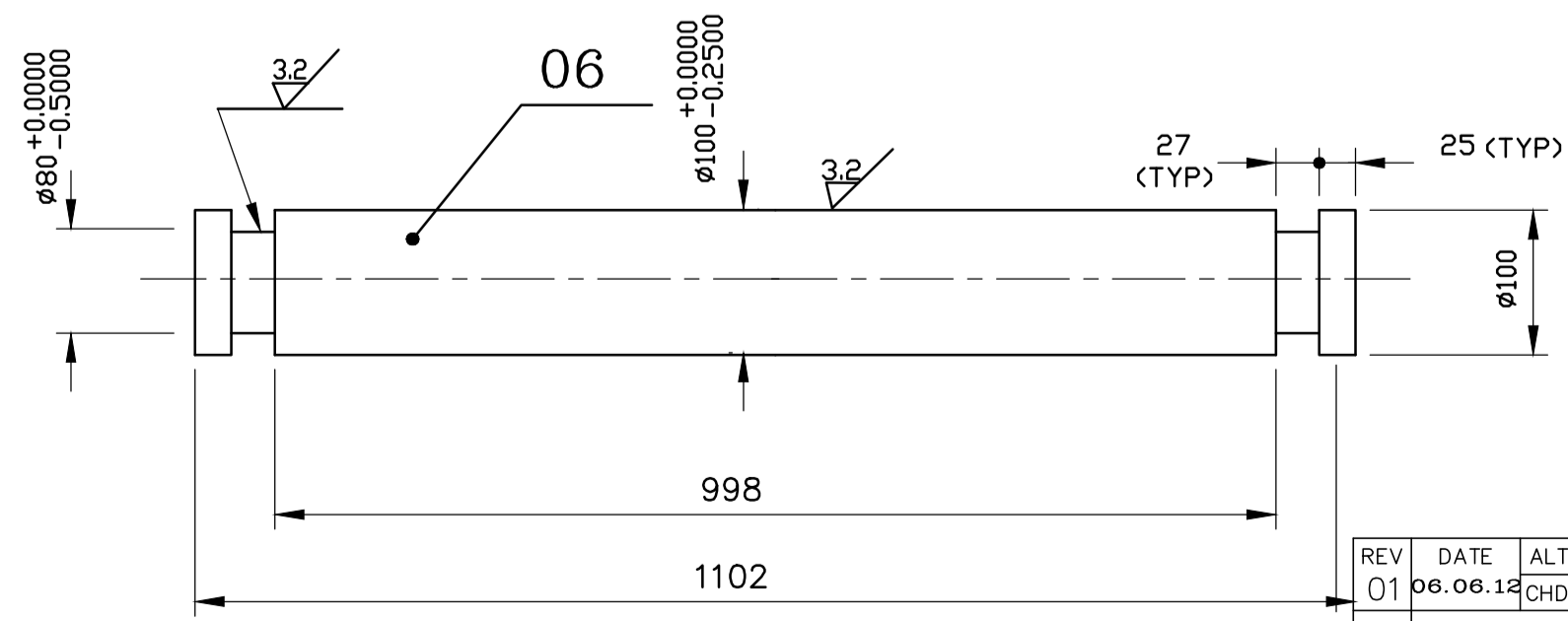
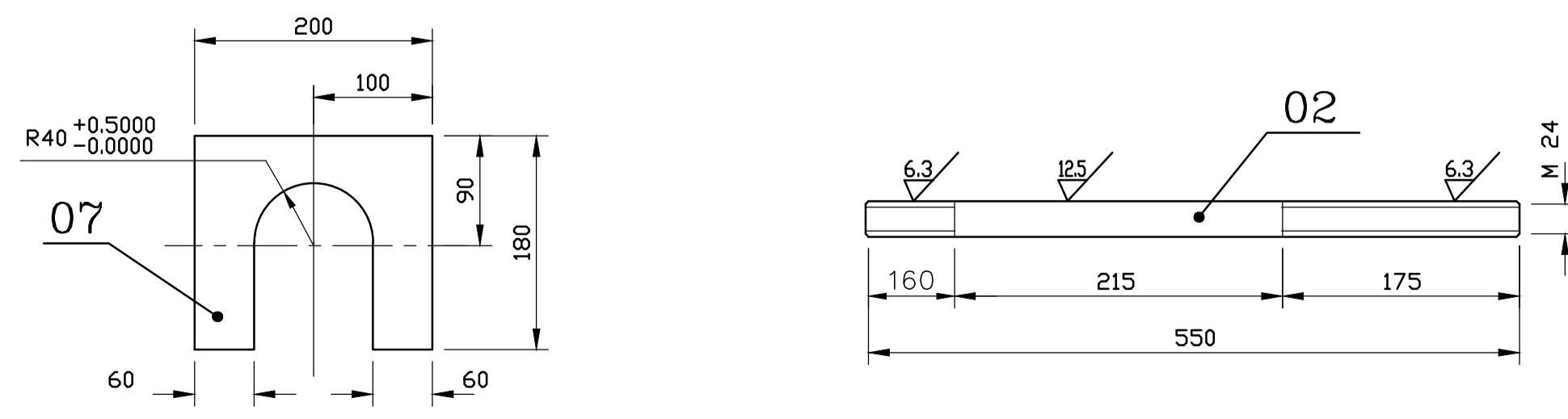
DESCRIPTION	MATL.CODE	QTY	RELEASED UNDER PGMA
HSFG BOLT WITH NUT M24X160	41240-24160	16	35-700
HSFG BOLT WITH NUT M24X90	41240-24090	8	35-700
WASHER HSS A24	41418-00024	48	35-700

NOTES

- 01 FOR GIRDER DETAILS REFER GIRDER DRG IN PG 35-212.
- * 02 REMOVE THIS WELD AFTER THE GIRDER HAS BEEN ERECTED AND BOLTED IN PLACE.
- 03 LUBRICATED PIN SEATS BEFORE INSTALLATION (USE ONLY MOLYBDENUM DI-SULPHIDE GREASE - TO BE PROCURED BY ERECTOR.
- 04 THREADED ROD (ITEM NO:02) MUST BE INSTALLED FOR RESISTANCE TO OVER TURNING DUE TO WIND DURING ERECTION.
- 05 MATERIALS AND OTHER REQUIREMENTS ARE GIVEN FOR ONE ASSY.ONLY
- 06 ϕ 26 HOLES TO BE DRILLED IN ITEM 03 & 05.
- 07 ITEM 06 TO BE MANUFACTURED AND FINISHED TO A:193 - B7. CHARACTERISTICS.
- 08 ITEMS 01,02,04 & 06 NEED NOT BE PAINTED.
- 09 PAINTING AREA - 5 SQ.M.
- 10 ITEMS 01,02,04 & 06 HAVE TO BE PROTECTED AGAINST RUST WITH AN APPLICATION OF A THIN FILM OF RUST PREVENTIVE OIL. THE THIN FILM OF OIL TO BE THOROUGHLY WIPED OFF AT SITE BEFORE ERECTION.
- 11 MANUFACTURING REQUIREMENTS SHALL BE AS PER RELEVANT Q.C.P.
- ** 12 THIS PORTION OF ROD IS TO BE CUT & REMOVED AFTER COMPLETE INSTALLATION OF CEILING STRUCTURE INCLUDING HORIZONTAL BRACING.



VARIANT NUMBER	ITEM NUMBER	DESCRIPTION	STD	DRAWING NUMBER	ITEM NO	MATERIAL CODE	UNIT	UNIT WEIGHT	QTY	ZONE
	09	WASHER PNCHD.A24				4140800024	No	0.093	24	
	08	NUT HEX.Gr.C M24				4130400024	No	0.330	24	
	07	PL 200X180X25				15-011-081 IS2062Fe410B	No	7.065	2	
	06	ROD ϕ 100; 1102				15-039-358 SA193-B7	No	67.942	1	
	05	PL 700X100X25				15-011-081 IS2062Fe410B	No	13.738	4	
	04	PL 1000X300X125				15-911-787 ASTM-A36	No	294.373	1	
	03	PL 700X100X25				15-011-081 IS2062Fe410B	No	13.738	2	
	02	ROD ϕ 25; 550				15-339-139 SA-105	No	2.121	8	
	01	PL1000X1000X150				15-911-723 ASTM-A36	No	1216.800	1	



REV	DATE	ALTERED BY	CHKD & APPD.
01	06.06.12	T.SATHIS	M.PENCHAL

CAUTION: The information on this document is the property of BHARAT HEAVY ELECTRICALS LTD. It must not be used directly or indirectly in any way without the consent of the company.

TYPE OF PRODUCT OR NAME OF CUSTOMER/PROJECT
Bharat Heavy Electricals Ltd
UNIT: HIGH PRESSURE BOILER PLANT
TIRUCHIRAPALLI - 620014

DRN	NAME	SIGNATURE	DATE
CHD	B. AMIR		06.11.09
APPD	H. A. JAFFAR		07.11.09
	M. PENCHAL		09.11.09

DEPT ST 355-053 ALL DIMENSIONS ARE IN MM PRODUCTION SCALE N.T.S WEIGHT (Kg) 1851.893 REF TO ASSY / OLD DWG

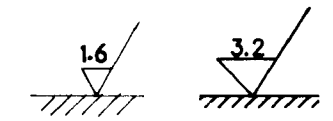
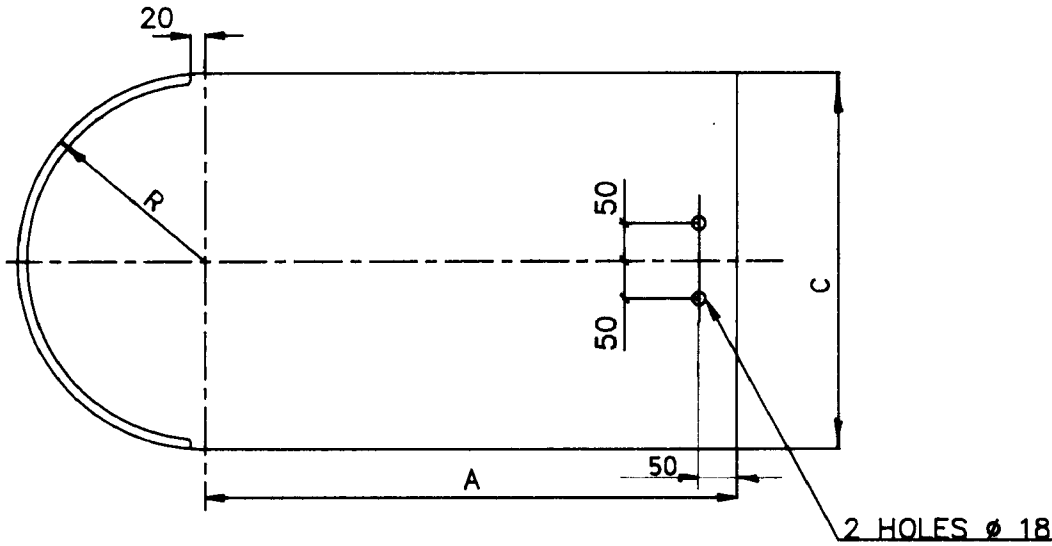
TITLE GIRDER PIN CONNECTION FOR GIRDER-2 (COL S8L&R) DRAWING NO : 1-35-190-07443 REV 01

FIRST ANGLE PROJECTION - ALL DIMENSIONS ARE IN MM

3-47-003-00696

DRAWING NO:

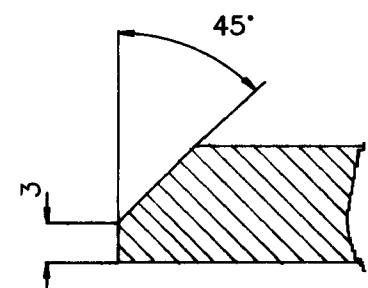
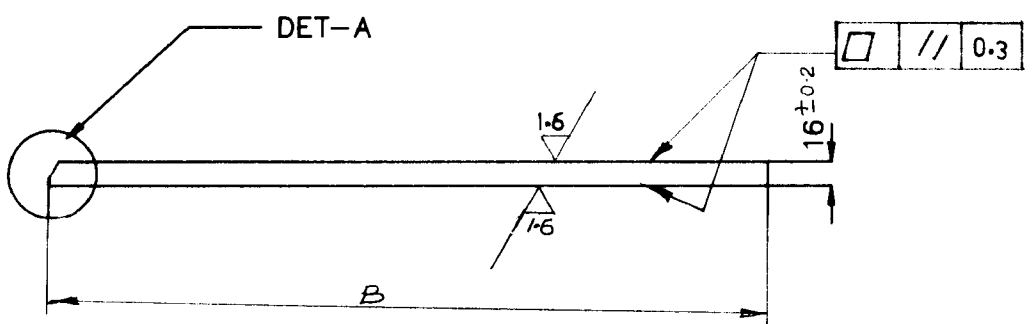
CAUTION: THE INFO ON THIS DOCUMENT IS THE PROPERTY OF BHEL. IT MUST NOT BE USED DIRECTLY OR INDIRECTLY IN ANY WAY DETRIMENTAL TO THE INTEREST OF BHEL.



GATE SIZE	VAR NO.	A ±1	B ±1	C ±0.5	R
18	01	605	830	450	225
20	02	675	925	500	250
22	03	670 700	945 975	550	275
24	04	720	1020	600	300
26	05	770	1095	650	325
14	06	595 515	770 690	350 348	175
12	07	595	755	320	160

NOTES:

1. ALL SURFACES TO BE MACHINED TO A FINISH OF 3.2 MICRONS.



REV	DATE	ALT.	CHD.	REV	DATE	ALT.	CHD.
06	20.4.99	Singha	Singha	05	14/10/94	K. J.	R. S.
07	22.8.99	Singha		04	17/9/91	K. J.	R. S.
04	17/9/91	K. J.	R. S.	02	16/10/90	K. J.	R. S.
03	07/05/91	K. J.	R. S.	01	9/6/90	K. J.	R. S.

ITEM NUMBER	DESCRIPTION	UNIT	DRAWING-NUMBER	ITEM-NO	MATERIAL-CODE	UNIT	UNIT-WEIGHT
07 01	PL.16 X 320 X 755			15 011 440	SA 240 TY 304		21.200
06 01	PL 16 X 350 X 690 770			15 011 440	SA 240 TY 304		39.65-35.538
05 01	PL 16 X 650 X 1095			15 011 440	SA 240 TY 304		90.000
04 01	PL 16 X 600 X 1020			15 011 440	SA 240 TY 304		78.000
03 01	PL 16 X 550 X 945 975			15 011 440	SA 240 TY 304		72.000-500
02 01	PL 16 X 500 X 925			15 011 440	SA 240 TY 304		59.20
01 01	PL 16 X 450 X 830			15 011 440	SA 240 TY 304		46.911

REV	DATE	ALT.	CHD.	REV	DATE	ALT.	CHD.
06	20.4.99	Singha	Singha	05	14/10/94	K. J.	R. S.
07	22.8.99	Singha		04	17/9/91	K. J.	R. S.
04	17/9/91	K. J.	R. S.	02	16/10/90	K. J.	R. S.
03	07/05/91	K. J.	R. S.	01	9/6/90	K. J.	R. S.

CUSTOMER & PROJECT NAME OR PRODUCT TYPE: **STANDARD BOM**

Bharat Heavy Electricals Ltd
BOILER PLANT UNIT
TIRUCHIRAPALLI - 620014

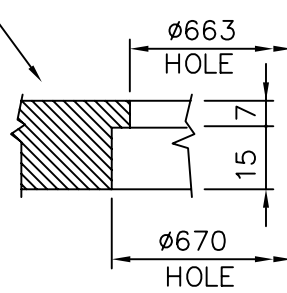
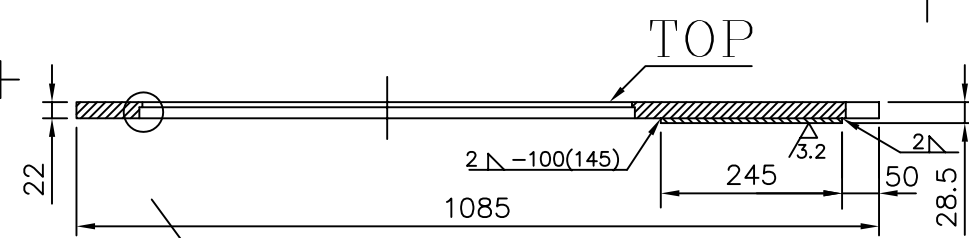
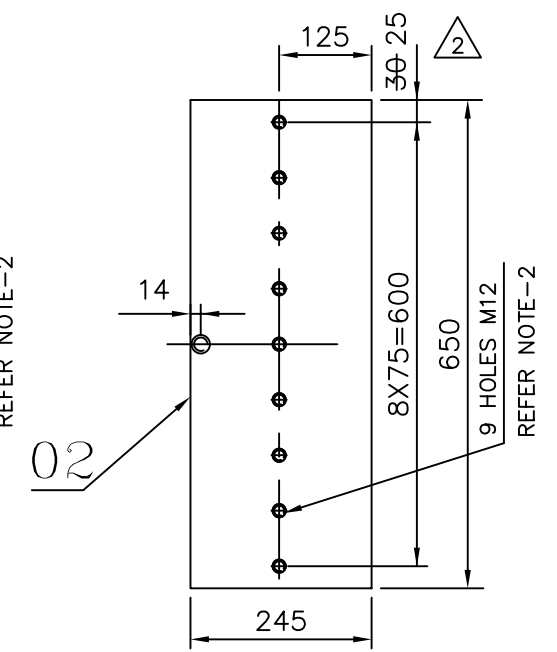
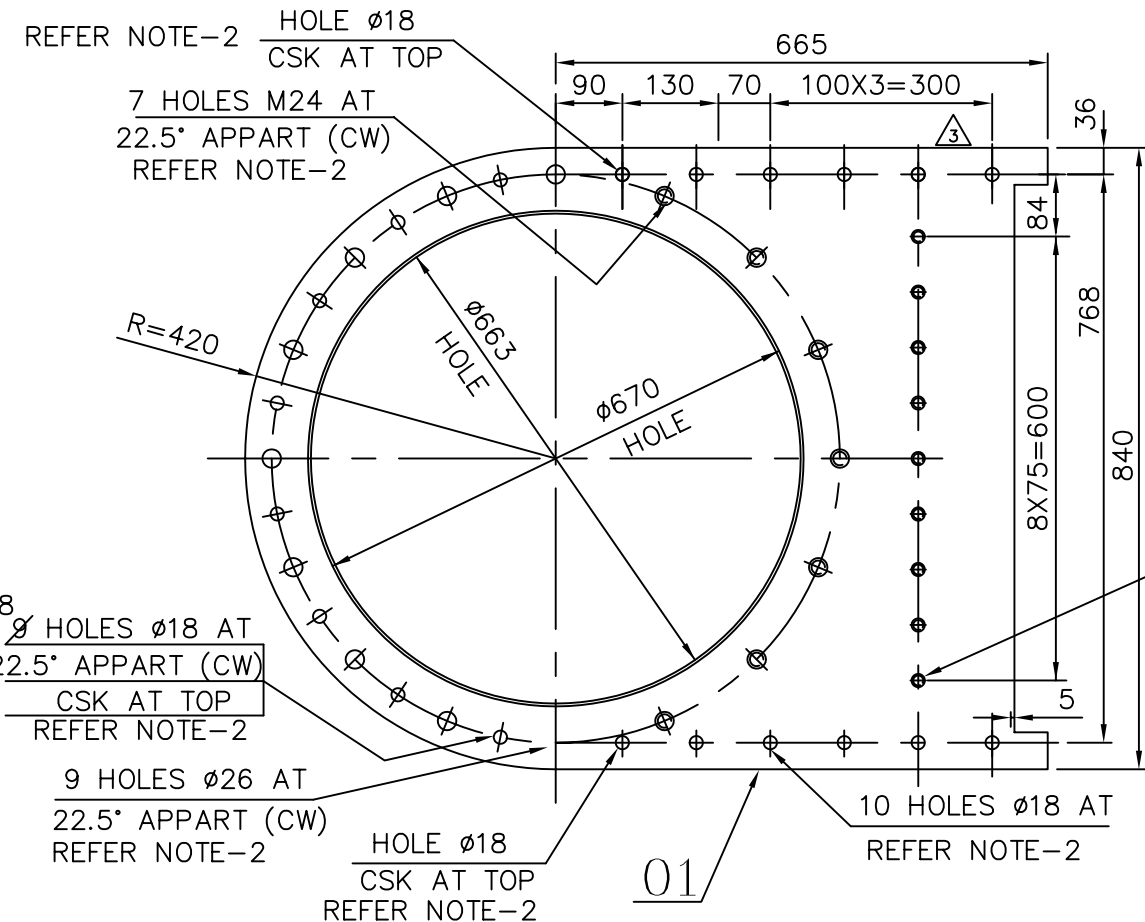
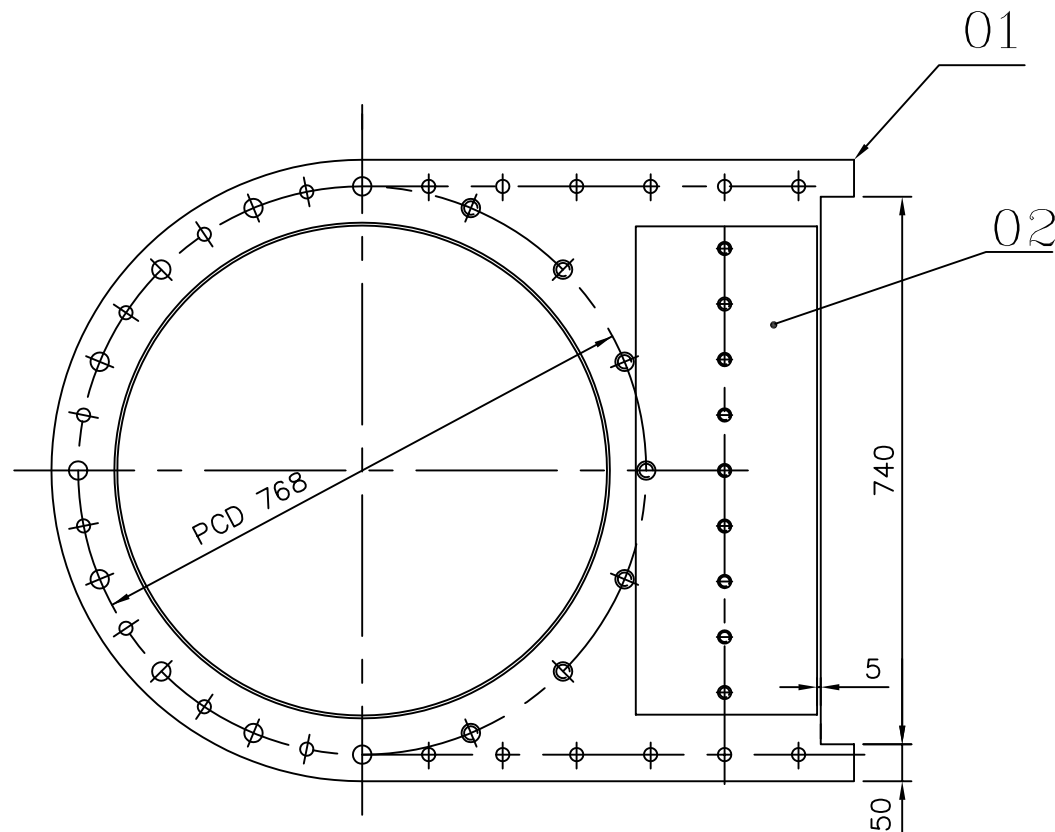
DEPT: CC, GRADE OF UNTOL DIM: C/M/F, SCALE: NTS

TITLE: **GATE PLATE**

DRAWING NO: **3-47-003-00696**

REV: **08**

SCANNED



VARIANT NUMBER	ITEM NUMBER	DESCRIPTION	STD	DRAWING NUMBER	ITEM NO	MATERIAL CODE	A/C	UNIT	UNIT WEIGHT	GS
					VAR NO	MATERIAL SPECN		D1	QUANTITY	
	02	PL. 8X245X650				15 011 027			8.109	
						IS2062 Gr. A			1	
	01	PL. 22X840X1085				15 011 081			75.513	
						IS2062 Gr. A			1	

NOTES

- ALL SURFACES TO BE MACHINED TO A FINISH OF 6.3 MICRONS UNLESS SPECIFIED.
- ALL HOLES TO BE MATCH DRILLED ALONGWITH THE GATE BODY -II, GATE GUIDE, AND GASKET

REV	DATE	ALTERED : G.S.K	REV	DATE	ALTERED : k.anbu	REV	DATE	ALTERED : k.anbu
03	25.1.08	CHECKED : M.T.P	02	20.1.07	CHECKED : Md.F.B	01	30.8.06	CHECKED :
ZONE	DIMENSION CHANGED		ZONE	DIMENSION CHANGED FOR ITEN NO 02.		ZONE	NO OFF HOLES ALTERED. AS NOTED.	

CAUTION: The information on this document is the property of BHARAT HEAVY ELECTRICALS LTD. It must not be used directly or indirectly in any way detrimental to the interest of the company.

TYPE OF PRODUCT OR NAME OF CUSTOMER/PROJECT

Bharat Heavy Electricals Ltd
UNIT: HIGH PRESSURE BOILER PLANT
TIRUCHIRAPALLI - 620014

DRN	NAME PDS	SIGNATURE	DATE 150904	NO. OF VAR
CHD	FB		290904	
APPD	SVS		300904	

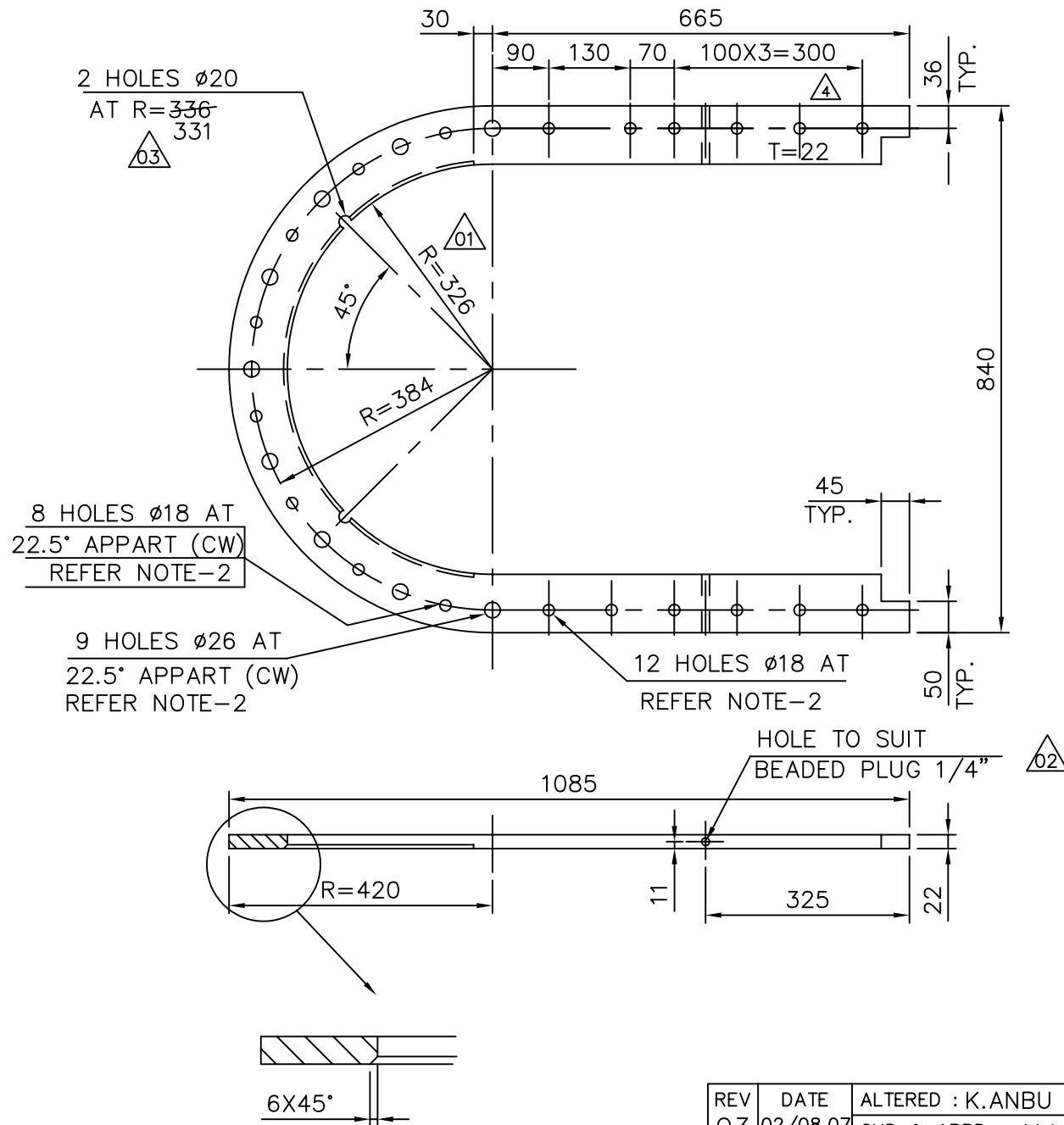
DEPT CC	GRADE OF UNTOL. DIM C/M/F	SCALE NTS	WEIGHT (Kg) 83.622	REF TO ASSY / OLD DWG	ITEM NO	No OF ITEMS
CODE 129						

TITLE: **GATE BODY - I**

CARD CODE: U 01

DRAWING NO : **3-47-263-01126**

REV: **03**



NOTES

1. ALL SURFACES TO BE MACHINED TO A FINISH OF 6.3 MICRONS UNLESS SPECIFIED.
2. ALL HOLES TO BE MATCH DRILLED ALONGWITH THE GATE BODY -I,GATE BODY-II, AND GASKET.

VARIANT NUMBER	ITEM NUMBER	DESCRIPTION	STD	DRAWING NUMBER	ITEM NO	MATERIAL CODE	A/C/P	UNIT	UNIT WEIGHT	GS
	01	PL.22X840X1085				15 011 081			37.800	
						IS2062 Gr. A			1	
					VAR NO	MATERIAL SPECN		DI	QUANTITY	

REV	DATE	ALTERED
03	02/08.07	K.ANBU CHD & APPD: Md.F.B
ZONE DIMENSION ALTERED AS NOTED.		
02	20.1.07	k.anbu CHECKED : Md.F.B
ZONE DIMENSION CHANGED FOR ITEN NO 02.		
01	23.8.06	k.anbu CHECKED : Md.F.B
ZONE DIMENSIONS ALTERED AS PER NOTE.		

REV	DATE	ALTERED	REV	DATE	ALTERED
04	25.1.08	G.S.K CHECKED : M.T.P	02	20.1.07	k.anbu CHECKED : Md.F.B
ZONE DIMENSIONS CHANGED		ZONE DIMENSION CHANGED FOR ITEN NO 02.		ZONE DIMENSIONS ALTERED AS PER NOTE.	

CAUTION: The information on this document is the property of BHARAT HEAVY ELECTRICALS LTD. It must not be used directly or indirectly in any way detrimental to the interest of the company.

TYPE OF PRODUCT OR NAME OF CUSTOMER/PROJECT			
Bharat Heavy Electricals Ltd UNIT: HIGH PRESSURE BOILER PLANT TIRUCHIRAPALLI - 620014 355-055	DRN	P.Duraisamy	SIGNATURE
	CHD	Farooq basha	DATE
	APPD	S.V.Sivaramulu	24-09-2004
DEPT	CC	ALL DIMENSIONS ARE IN MM	PROJECTION
CODE	129	NTS	SCALE
WEIGHT (Kg)		REF TO ASSY / OLD DWG	
37.800			
TITLE			DRAWING NO :
GATE GUIDE - 26"			3-47-263-01128
			REV
			04

Annexure-I

List of valves items in which machining Sources are required on Job work basis

S. No	Gr. No	Product Area	Description	Size
1	G2386	BSG	Locking Plate	Gate Assembly
2	G2388	BSG	Gasket Shield	Gate Assembly
3	G2391	BSG	Ball Dia 20	Gate Assembly
4	G2392	BSG	Washer Plate PL 5; D40/D18	Gate Assembly
5	G2393	BSG	Gasket Holder	Gate Assembly
6	G2394	BSG	Plate 10X40X75	Gate Assembly
7		BSG	Plasma Cutting of SS & Alloy steel plates upto 40 mm . thickness	Gate Assembly